

ROCKINGHAM INDUSTRY ZONE

ENVIRONMENTAL MANAGEMENT PLAN

Prepared for: Landcorp
Report Date: 14 October 2013
Version: 6
Report No. 2011-29

The logo for PGV Environmental is located in the bottom right corner of the page. It features the letters 'PGV' in a large, bold, white sans-serif font. Below 'PGV', the word 'ENVIRONMENTAL' is written in a smaller, white, all-caps sans-serif font. The background of the logo area is a dark orange color with a subtle pattern of fine, white, curved lines that create a sense of motion or a stylized landscape.

PGV
ENVIRONMENTAL

Contents

- Contents i
- List of Attachments iii
- Summary of Commitments iv
- 1 INTRODUCTION 1
 - 1.1 Background..... 1
 - 1.2 Purpose and Scope 2
 - 1.3 Proposed Subdivision 2
 - 1.4 Development Guidelines 3
- 2 EXISTING SITE DESCRIPTION 4
 - 2.1 Topography 4
 - 2.2 Geology and Soils 4
 - 2.3 Hydrology 4
 - 2.4 Wetlands 4
 - 2.5 Flora and Vegetation 5
 - 2.5.1 Flora 5
 - 2.5.2 Vegetation Types 5
 - 2.5.3 Vegetation Condition 6
 - 2.5.4 Threatened Ecological Community 6
 - 2.6 Fauna 6
- 3 ENVIRONMENTAL MANAGEMENT DURING CONSTRUCTION 8
 - 3.1 Retention of Native Vegetation..... 8
 - 3.2 Seed Collection and Propagation 8
 - 3.3 Salvaging Vegetation 8
 - 3.4 Clearing of Native Vegetation 9
 - 3.4.1 Mulching..... 9
 - 3.4.2 Clearing Procedures 9
 - 3.5 Native Fauna Management 9
 - 3.5.1 Fauna Trapping and Relocation Program 9
 - 3.5.2 Habitat Harvesting..... 10
 - 3.5.3 Clearing Procedures 10
 - 3.6 Aboriginal Heritage Management during Construction..... 10
- 4 ENVIRONMENTAL MANAGEMENT POST CONSTRUCTION 12
 - 4.1 Retained Vegetation..... 12

4.2	Landscaping	12
4.2.1	Species List	12
4.2.2	Source	14
4.2.3	Weed Management	15
4.3	Waste Management	15
4.4	Fire Management	15
5	ENVIRONMENTAL MANAGEMENT OF INTERFACES	16
5.1	Between Development Lots and the Conservation Area	16
5.2	Between Lots and Retained Vegetation	17
5.3	Between Lots and Re-created Wetlands	17
6	REVIEW OF THE MANAGEMENT PLAN	18
7	REFERENCES	19

List of Attachments

Tables

Table 1: Vegetation Condition Rating

Table 2: Landscaping Species List

Figures

Figure 1: Regional Location

Figure 2: Site Boundary and Topography

Figure 3: Stage 1 Subdivision Layout

Appendices

Appendix 1: RIZ Structure Plan

Appendix 2: Ministerial Statement 836

Appendix 3: Notice of Approval under the EPBC Act

Appendix 4: Proposed Stage 1 Subdivision

Appendix 5: Typical Road Cross Sections

Summary of Commitments

Management Strategy	Management Measures	Timing	Responsibility
	During Construction		
Retention of Native vegetation	Native vegetation may be retained in vegetated buffers and other small areas in the lots.	Development Application planning	Landcorp
	Industries proposed to locate on lots that contain TEC19 will be provided with maps showing the location and extent of this vegetation type and encouraged to integrate the TEC swale into their stormwater management system.	Development Application planning	Landcorp/ Industry
	Areas of native vegetation to be retained will be adequately delineated on plans and on-ground to ensure minimum disturbance during construction.	Prior to Clearing	Landcorp/ Industry
Seed Collection and Propagation	The collection of local seed for use in rehabilitation or landscaping within the Development Area will be carried out prior to clearing works.	Prior to Clearing	Landcorp
	The seed stock will then be stored and utilised, as required.	During Construction	Landcorp/ Industry
Salvaging Vegetation	The collection of Balgas (<i>Xanthorrhoea preissii</i>) will be undertaken and plants will be stored appropriately prior to transplanting to landscaped areas.	Prior to Clearing	Landcorp/ Industry
	The location and limit of clearing of vegetation within all work areas will be clearly identified on site and delineated on appropriate plans to be supplied to contractors prior to the commencement of works	Prior to clearing	Landcorp/ Industry
Clearing of Native Vegetation	Native vegetation to be cleared will be removed in a systematic manner and stockpiled for mulching and/or chipping for later use in rehabilitation and landscaping works.	During Clearing	Landcorp/ Industry
	The stockpiling of larger logs that may be suitable for rehabilitation works will be undertaken and will be used for site stabilisation and access control where appropriate.	During Clearing	Landcorp/ Industry
	Cleared areas will be temporarily stabilised with water, hydro-mulch or other stabilising material as necessary until further works are implemented.	During Clearing	Landcorp/ Industry
	No burning of cleared vegetation will be permitted at any stage during clearing or construction activities.	During Clearing	Landcorp/ Industry
	No vehicles involved in clearing or earthworks will be permitted to enter the Conservation Area, and no soil or mulch from clearing activities will be permitted to be moved into the area.	During Clearing	Landcorp/ Industry

Management Strategy	Management Measures	Timing	Responsibility
Native Fauna Management	In the areas of native vegetation to be cleared for the development Landcorp will implement a fauna relocation program prior to the clearing of the road reserves and service corridors.	Prior to clearing	Landcorp/ Industry
	Prior to clearing Tuart trees those potentially contain suitable hollow logs for Black Cockatoos will be marked and, if adequate, harvested to be installed in the Conservation Area.	Prior to Clearing	Landcorp/ Industry
	The clearing contractor will complete a fauna induction program which will include fauna friendly clearing procedures.	During Clearing	Landcorp/ Industry/ Contractor
Aboriginal Heritage Management Plan	The Site Manager will be briefed by an archaeologist on the identification of materials that may constitute an archaeological site and of the requirements of the Aboriginal Heritage Act, 1972 regarding such sites.	Prior to clearing and construction	Landcorp/ Industry
	The Protocol for a possible site discovery, provided in this management plan, will be part of the induction package for working on the site.	During Clearing and Construction	Landcorp/ Contractor
	If any sites are identified an Aboriginal Heritage Management Plan will be prepared and submitted to the City of Rockingham	If required	Industry
Post Construction			
Retained vegetation	Vehicle and pedestrian access will not be allowed in areas designated retained vegetation	Post Construction	Industry
Landscaping	As much as possible the species list was developed to provide a selection of waterwise, native and non-invasive plants is to be used within the developed lots.	Development Application planning	Industry
	Any plants to be used outside of the species list must be shown on the Development Application plans	Development Application planning	Industry
	Seed that is sourced from the subdivision area and local provenance tubestock will be used as much as possible in landscaping.	During Construction	Industry
	All tubestock used must be certified disease free.	During Construction	Industry
	All Declared Weeds must be eradicated from within lots	Post Construction	Industry

Management Strategy	Management Measures	Timing	Responsibility
Waste Management	A Waste Management Plan must address the control of litter from the individual development during construction and show plans to incorporate rubbish management in the design of the development on the lot.	Development Application planning	Industry
Fire Management	Individual industries adjacent to the Conservation Area will require approved Fire Management Plans	Development Application planning	Industry
Interface between Lots and the Conservation Area and Retained Vegetation	Access points and routes to these must be kept clear at all times	Ongoing	Industry
	Industries abutting the Conservation Area must maintain the fence between the Lot and the Conservation Area	Ongoing	Industry
	Control rubbish, litter and waste on-site to ensure this does not encroach into the Conservation Area in accordance with individual development's approved Waste Management Plans	Ongoing	Industry
	Maintain an adequate fire breaks as well as between any industrial activity that poses a fire risk in accordance with individual development's approved Fire Management Plans	Ongoing	Industry
	Prevent any adverse impacts on the Conservation Area and retained vegetation as a result of the industrial activities	Ongoing	Industry
Interface between Lots and Re-created Wetlands	No vehicles involved in clearing or earthworks and no soil or mulch from clearing activities in lots will be permitted to be moved into the Conservation Area unless specifically authorised by Landcorp. Industries that are located on lots adjacent to this drainage infrastructure will not clear any of the planted vegetation for any purpose No activity that may impact on the vegetation may be undertaken.	During Clearing and Construction Ongoing Ongoing	Landcorp/ Industry/ Contractor Industry Industry
Review of the Management Plan	Review This Management Plan will be reviewed every five years.	2018	Landcorp

1 INTRODUCTION

1.1 Background

The Rockingham Industry Zone (RIZ) is undergoing development in accordance with the East Rockingham Industrial Park IP14 Structure Plan, the revised East Rockingham WWTP siting and associated service corridors, and the requirements under Ministerial Statement 863.

The RIZ is located about 40km south of the Perth Central Business District and approximately 2km northeast of Rockingham (Figure 1). The site is planned as an extension of the Kwinana Industrial Area to the north. The RIZ extends from the coast just north of the CBH Grain Terminal to the east to the Leda Nature Reserve and is generally bounded by Office Road to the north and Dixon Road to the south. The western-most portion of the RIZ is adjacent to Kwinana Beach (Cockburn Sound) (Figure 2).

The RIZ is covered by the Western Australian Planning Commission's (WAPC) Improvement Plan No.14 (IP14). Adopted in April 1988, IP14 was created in order to advance the planning, development and use of land for industrial purposes within the RIZ. Subsequently, the IP14 Structure Plan was adopted by the then Ministry for Planning in 1996. The existing IP14 Structure Plan (1996) has been refined in 2012 to reflect recent determinations by the WAPC and EPA (Appendix 1). The Structure Plan sets out the intended land uses and key road networks within the site. Its framework informs how future industrial lots may potentially be configured as part of future subdivision applications to the WAPC, whilst still being flexible enough to respond to the market needs of the private sector.

The proposal for the development of a portion of the RIZ (Figure 2) was assessed by the Environmental Protection Authority (EPA) as a Strategic Environmental Assessment (SEA). The SEA for the RIZ only included those portions of the RIZ with important environmental features. The SEA was approved by the Minister for the Environment in 2011 and revised under Section 45C of the *Environmental Protection Act 1986* in 2013 (Ministerial Statement 863) (Appendix 2).

Landcorp is currently preparing subdivisions for the RIZ which includes the areas assessed under the SEA plus the balance of the land that did not contain important environmental features.

Schedule 1 of Ministerial Statement 863 (Appendix 2) that approved the SEA defines a subdivision as derived proposals. Key Characteristics of a Derived proposal includes the preparation of:

An Environmental Management Plan (overall or site specific) to guide future development of industry within the site to:

- *Retain, where practical, vegetation within the developed area, especially the threatened ecological community Sedgeland in Holocene dune swales of the Southern Swan Coastal Plain;*
- *Include a fauna trapping and relocation program to be implemented in consultation with the DEC; and*
- *Salvage potential breeding habitat for avifauna during clearing for integration into the Conservation Area.*

1.2 Purpose and Scope

This Environmental Management Plan (EMP) will be a management tool that outlines strategies to ensure the development within Lots by individual industries in the RIZ meets environmental commitments and objectives for the development. The EMP includes specification of the responsibility and authority of organisations in relation to the EMP during the clearing of native vegetation and earthworks for individual industries.

This EMP has been prepared to include requirements of the Ministerial Statement 863 and commitments made during the Strategic Environmental Assessment. The EMP will be provided to companies that will be establishing industries within the RIZ.

The establishment of the TEC as required by Condition 14a in the approval of the project under the EPBC Act is outlined in a Construction Environmental Management Plan and the ongoing management of the TEC will be outlined in an Offsets Management Plan. Therefore the establishment or direct ongoing management for the TEC replacement is not part of this EMP. The EMP does address management of the re-created TEC interface with development.

Future subdivision plans within the RIZ will include the whole RIZ area and therefore this EMP includes both areas assessed in the SEA and areas not assessed in the SEA.

1.3 Proposed Subdivision

Given the size of the project subdivisions will be designed to be flexible enough to respond to market needs and the varying land and operational requirements of industrial activities. The Structure Plan (Appendix 1), designates the following land uses in the RIZ:

- Heavy Industry;
- Heavy to General Industry Transition (5 to 10ha lots);
- General Industry (1 to 5ha lots);
- Light Industry;
- Service Commercial;
- Public Purpose; and
- Conservation.

The EMP applies to the areas within lots rather than areas in which infrastructure will be installed which will be dealt with in a separate Construction Environmental Management Plan. In addition a Conservation Area Management Plan will be prepared for the 91ha Conservation Area.

Subdivision of Stage 1 is proposed on the western boundary of the RIZ to the north of Alumina Road (Figure 3). This subdivision has been prepared to provide industrial land to specific proponents that intend on developing the land in the near future. The lot size and shape has been designed to accommodate these proponents (Appendix 4).

The remainder of the RIZ will be subdivided in the future. The final size, orientation and shape of lots will be determined by the type of development that is to be located in the area. The EMP has been prepared to allow preliminary earthworks and clearing to be undertaken in lots prior to industry being installed.

1.4 Development Guidelines

The Development Guidelines for the RIZ have been prepared to guide development within the lots by individual proponents. These guidelines are a key reference for preparation of a development application and for obtaining a building licence for future industries in the RIZ. The Development Guidelines will provide guidance on the landscaping within lots and will set out the requirements for development to comply with the environmental approvals for the RIZ. The Development Guidelines will require compliance with this EMP. The approval of proposals to develop within lots will be subject to meeting the conditions of this EMP which will be assessed when the Development Application is submitted to Landcorp.

2 EXISTING SITE DESCRIPTION

2.1 Topography

The Rockingham Industry Zone is relatively flat with a variation in elevation from 0 to 9 metres Australian Height Datum (mAHD). The site contains a series of low ridges and intervening shallow swales associated with the Rockingham Becher Plain landform (Figure 2).

2.2 Geology and Soils

The Rockingham Industry Zone is located on the northern portion of the Rockingham-Becher Plain, a relatively recent feature of the Quindalup Dune System between Kwinana and Mandurah created as a result of coastline accretion caused by sea level fall over the last 6,400 years. The RIZ contains a series of shore-parallel ridges that show the early formation of the Point Peron peninsula between 5,000 and 6,000 years ago. The sequence of low ridges and swales is fairly continuous in part but in other areas is affected by existing development and land uses that have earth-worked the surface features of the landform (Coffey, 2010).

2.3 Hydrology

Groundwater occurs at a shallow depth under the site and has a general movement westwards towards the coast. Monitoring of the groundwater levels in 2005 showed a seasonal range in groundwater levels between 0.9m in April up to 1.7m AHD in September. The dry condition of the wetlands could be the result of a drying climate which has seen a local drop in water levels of approximately one metre since 1992 (Coffey, 2010).

The groundwater is alkaline with pH ranging from 8.30-8.77. The shallow groundwater is predominantly fresh (<1,000mg/L) apart from one bore located on the southern boundary which has a salinity of 4900mg/L, influenced possibly by saline water from Lake Cooloongup (Coffey, 2010).

2.4 Wetlands

A total of 38 wetlands occur in the RIZ (Coffey, 2010). Of these 14 wetlands are contained in the Conservation Area and 24 wetlands are located in the development area. Of the 24 wetlands that are in the development area of the RIZ 19 are Conservation Category, due primarily to the presence of FCT19b identified as a Threatened Ecological Community (TEC), and five are Resource Enhancement.

The wetlands are predominantly located in linear swales and range in length from 60m – 1.05km long. The vegetation within the wetlands is a mix of dampland and sumpland type vegetation, with the most common tree species being *Melaleuca raphiophylla* and *Banksia littoralis*. *Melaleuca huegellii* is also present in many wetlands indicating the limestone substrate of some swales. Five wetlands were identified with Tuart (*Eucalyptus gomphocephala*) as a dominant tree species.

The wetlands are groundwater dependent rather than perched wetlands relying on rainfall or surface runoff. The water levels have never been recorded shallower than 1.1m from the surface in the last five years.

2.5 Flora and Vegetation

2.5.1 Flora

A flora survey of the RIZ was undertaken by ATA Environmental between 2002 and 2005 (ATA, 2006) as well as Trudgen and Weston (1998).

A combined total of 166 plant species were recorded from the RIZ in both studies. Of the 166 plant species recorded, 98 were native and 68 were introduced. No Declared Rare or Priority listed flora has been recorded within the vicinity of the RIZ. No Declared Rare or Priority Flora species or Commonwealth Listed species were identified during the Vegetation and Flora Assessment (ATA, 2006).

2.5.2 Vegetation Types

A total of 21 vegetation associations were mapped by ATA (2006) on the RIZ as follows:

Dryland Flats

- *Eucalyptus gomphocephala* (Tuart) Woodland;
- *Eucalyptus gomphocephala*/ *Acacia rostellifera* Woodland;
- *Acacia rostellifera* Tall Shrubland;
- *Eucalyptus gomphocephala*/ *Melaleuca huegelii* Open Woodland;
- *Melaleuca huegelii*/ *Acacia rostellifera* Tall Open Shrubland;
- *Melaleuca huegelii*/ *Hakea prostrata* Tall Shrubland; and
- *Xanthorrhoea preissii*/ *Avena fatua* Shrubland.

Dryland Ridges

- *Acacia rostellifera*/ *Hakea prostrata* Shrubland;
- *Xanthorrhoea preissii*/ *Acacia saligna*/ *Hakea prostrata* Shrubland;
- *Hakea prostrata* Shrubland;
- Wetland Swales;
- *Melaleuca huegelii* Low Woodland;
- *Melaleuca raphiophylla*/ *Melaleuca huegelii*/ *Gahnia trifida* Low Woodland;
- *Melaleuca raphiophylla*/ *Acacia rostellifera*/ *Gahnia trifida* Low Woodland;
- *Melaleuca raphiophylla*/ *Banksia littoralis* Low Woodland;
- *Melaleuca raphiophylla*/ *Banksia littoralis*/ *Melaleuca huegelii* Low Woodland;
- *Melaleuca raphiophylla*/ *Acacia rostellifera*/ *Melaleuca huegelii* Low Woodland;
- *Banksia littoralis*/ *Acacia rostellifera* Low Woodland;
- *Eucalyptus gomphocephala*/ *Melaleuca raphiophylla* Woodland; and
- *Xanthorrhoea preissii* Shrubland.

Wetland Flats

- *Melaleuca raphiophylla*/ *Gahnia trifida* Low Open Woodland; and
- *Melaleuca raphiophylla*/ *Banksia littoralis*/ *Acacia rostellifera*/ *Melaleuca huegelii* Low Open Woodland (ATA, 2006).

The 21 vegetation associations were considered to represent the following four Floristic Community Types:

1. Floristic Community Type 17 – *Melaleuca raphiophylla* – *Gahnia trifida* seasonal wetlands (also recorded with *E. gomphocephala*) recorded in the southern portion of the site.
2. Floristic Community Type 19b – Woodlands over Sedgeland in Holocene Dune Swales.
3. Floristic Community Type 29b – *Acacia* shrublands on taller dunes.
4. Floristic Community Type 30c2 – Quindalup *Eucalyptus gomphocephala* and/or *Agonis flexuosa* woodlands (ATA, 2006).

2.5.3 Vegetation Condition

The condition of the vegetation was assessed according to the condition rating scale of Bush Forever (Government of WA, 2000). Overall there is a high weed density in the vegetation within the RIZ. Particularly weedy and degraded areas are in the north of the RIZ and to the west of Mandurah Road (ATA, 2006).

Vegetation that was considered to be in Good to Very Good condition was recorded in the area west of Patterson Road in the vicinity of the rail loop and in the southeast corner of the site between Day Road and Mandurah Road and between Mandurah Road and the railway line on the eastern boundary. The majority of the Development Area of the RIZ is in Degraded to Completely Degraded condition (ATA, 2006).

2.5.4 Threatened Ecological Community

The Rockingham Industry Zone contains the Threatened Ecological Community (TEC) FCT19b – *Sedgeland in Holocene Dune Swales*. The vegetation classed as FCT19b is a TEC at the State and Commonwealth level. The Conservation Area contains 18ha of TEC19b while the development area contains 13ha. The SEA was also referred and approved under the Commonwealth *Environment Protection and Biodiversity Conservation Act, 1999*, (EPBC 2010/5337). Approval of the project was granted subject to a number of conditions, one of which related to the clearing of Threatened Ecological Community 19b (TEC19) (Appendix 3). Condition 14a states that the developer must:

“Within 12 months of clearing any areas of TEC, 1.5ha for every 1ha of TEC cleared must be established on-site and protected in perpetuity”.

TEC19 occurs in the areas proposed for future subdivision and development. A total of 11.6ha of TEC may potentially be cleared. Re-establishment of any TECs cleared from future lots is proposed within road reserves as described in the Construction Environmental Management Plan (PGV, 2012).

2.6 Fauna

The RIZ contains woodland and shrubland habitat that may be used by a number of fauna species listed under Commonwealth and State government legislation requiring special protection including the Southern Brown Bandicoot Rainbow Bee-eater Carnaby’s Black Cockatoo and Possibly the Carpet Python (Coffey Environments, 2009).

A tree survey of the RIZ identified a few Tuarts with hollows but the likelihood of these being utilised by Carnaby’s Black Cockatoos for breeding was considered to be low due to the size of the hollows.

The frequency of fires and general growth habit of the Tuart trees indicates the future development of breeding hollows in the next fifty years is extremely unlikely.

The Peregrine Falcon, Southern Brush-tailed Phascogale and Western False Pipistrelle may utilise the RIZ, but this is considered unlikely given the disturbed nature of the habitat, its closeness to light illuminated industry and its size (Coffey Environments, 2009).

The unusual spider species *Teyl 'waldockae'* occurs in the area in dune swales. This species is not listed by Western Australian or Commonwealth legislation (Coffey Environments, 2009).

3 ENVIRONMENTAL MANAGEMENT DURING CONSTRUCTION

3.1 Retention of Native Vegetation

As a minimum native vegetation will be retained on lots in vegetated buffers as shown in the Typical Road Cross Sections in Appendix 5. Vegetated buffers will be located on road frontage and will be around 5m wide. Landcorp may undertake clearing operations on some sites prior to sale or lease. Development Applications submitted to Landcorp must show the extent of clearing to be undertaken remainder of the site. Once the Development Application (DA) is approved no additional clearing other than that shown on the DA can be undertaken.

Industries proposed to locate on lots that contain TEC19 will be provided with maps showing the location and extent of this vegetation type. Where possible, industry will be encouraged to integrate the TEC swale into their stormwater management system thereby retaining this vegetation.

Any areas of native vegetation that are identified to be retained will be adequately delineated to ensure minimum disturbance to these areas. This will be done by accurate pegging and clearly demarcating with surveyor tape on site for areas to be cleared. The location and limit of clearing of vegetation within all work areas will be clearly identified on appropriate plans prior to construction. The plans will be supplied to contractors and personnel prior to commencement of works.

3.2 Seed Collection and Propagation

The collection of local seed material for the use in revegetation will be carried out prior to clearing works. Seed collection will target the following species:

- *Eucalyptus gomphocephala*;
- *Banksia littoralis*;
- *Melaleuca raphiophylla*;
- *Acacia rostellifera*;
- *Melaleuca huegelii*;
- *Xanthorrhoea preissii*;
- *Gahnia trifida*;
- *Lepidosperma gladiatum*;
- *Baumea juncea*;
- *Muehlenbeckia adpressa*; and
- *Hardenbergia comptoniana*.

The seed stock will be harvested, processed and stored by an appropriate seed collection company until being passed to an accredited nursery to raise tubestock to be used in the revegetation on the site.

3.3 Salvaging Vegetation

The collection of Balgas (*Xanthorrhoea preissii*) will be undertaken prior to clearing as required for landscaping. Plants of these species will be excavated in the correct manner to ensure survival and

stored appropriately prior to transplanting to landscaped areas in the development. These will be made available to industries as part of the landscaping for individual industrial developments.

3.4 Clearing of Native Vegetation

3.4.1 Mulching

Mulched material can make a substantial contribution to the on-site seed bank and when re-spread in the relatively short term (i.e. within six months) and is usually very successful in aiding the re-establishment of vegetation. Cleared native vegetation will be used to generate chipped mulch material. Mulch will be used in areas requiring stabilisation and rehabilitation in the RIZ. Mulching of cleared native vegetation will be conducted concurrently with clearing works. The mulched material will be stockpiled close to the source of mulch for reuse within the immediate proximity, where appropriate.

3.4.2 Clearing Procedures

The Site Engineer will require contractors and nominated subcontractors to adhere to the following clearing procedures within the development area:

- Native vegetation to be cleared will be removed in a systematic manner and stockpiled for mulching and/or chipping for later use in rehabilitation and landscaping works.
- The stockpiling of larger logs that may be suitable for rehabilitation works will be undertaken and will be used for site stabilisation and access control where appropriate.
- Cleared areas will be temporarily stabilised with water, hydro-mulch or other stabilising material as necessary until further works are implemented.
- No burning of cleared vegetation will be permitted at any stage during clearing or construction activities.
- No vehicles involved in clearing or earthworks and no soil or mulch from clearing activities will be permitted to be moved into the Conservation Area unless specifically authorised by Landcorp. This will reduce the potential for introduction of any pathogens or weeds to the Conservation Area.

3.5 Native Fauna Management

3.5.1 Fauna Trapping and Relocation Program

In the areas of native vegetation to be cleared on lots for industry a fauna relocation program will be implemented prior to the clearing of vegetation for construction. It is expected that most species will be able to relocate naturally to other areas of bushland within the RIZ for refuge however fauna trapping and relocation is a requirement of Ministerial Statement 836.

The fauna relocation program will concentrate on reptiles including the Carpet Python. Reptiles are normally most active in late spring and during summer and reptile collection during these seasons would be most successful. A systematic active search will be conducted for areas scheduled to be cleared on the RIZ. The relocation of reptiles will occur as close to the planned clearing date as possible to minimise the chance of reintroduction from surrounding areas. Active searching would include digging out holes, removing bark from logs and trees, turning over rocks and sorting through

leaf litter with rakes. This strategy is likely to only capture a limited assemblage of vertebrate fauna in any area as many species are cryptic and not readily caught by active searches.

Any fauna trapped or caught during the program will be relocated as directed by officers from the Department of Environment and Conservation's Wildlife Branch. The location selected by the Department of Environment and Conservation is generally an appropriate Department of Environment and Conservation managed nature reserve, in this case the Conservation Area in the RIZ that is to be managed by the DEC in the future or Leda Reserve.

3.5.2 Habitat Harvesting

Tuart trees that are to be removed within the lots that are identified as having hollows will be marked prior to clearing. After clearing the hollow logs will be harvested.

Hollows logs that are harvested from the development area will be installed on trees in the Conservation Area. The hole in the bottom of each log will be closed with a piece of wood, tin or flywire and each log will contain a layer of 'potting mix' in the bottom. All logs will be attached to a tree with a chain and U bolts. Logs will be placed high enough in the tree to restrict access from the ground.

Trees selected to have a hollow log will be assessed as suitable if they are mature, contain a fork that could be used as an anchor point for the chain and are unlikely to fall due the extra weight associated with the log.

3.5.3 Clearing Procedures

The clearing contractor will complete a fauna induction program. This program will include information regarding appropriate clearing process to minimise the possibility that fauna are injured or killed.

As much as possible, clearing will be undertaken on a staged basis and will be undertaken in the following manner:

- Larger trees (dead or alive) should be 'bumped' with machinery first then lowered if no fauna is spotted. Trees should not be pushed and cleared in one motion.
- No clearing will be undertaken in spring to avoid nesting birds.
- Native fauna injured during clearing should be taken to a designated veterinary clinic or the contractor should call DEC's Wild Care 24hr hotline (08) 9474 9055 for instruction.

3.6 Aboriginal Heritage Management during Construction

Aboriginal Heritage Surveys are being conducted on the site however during construction there is a potential for artefacts to be disturbed.

The landowner will ensure that the Site Manager is briefed by an archaeologist on the identification of materials that may constitute an archaeological site and of the requirements of the *Aboriginal Heritage Act, 1972* regarding such sites. All contractors working on the site will be made aware of their responsibilities with regards to the discovery of Aboriginal Heritage sites through induction training.

If there is any possibility that an Aboriginal site has been found during construction works, the following steps will be taken:

1. All work must stop in the immediate area. The potential site should be identified in such a way that avoids any damage after works have ceased. This may include taping or temporary fencing to isolate and restrict access immediately.
2. The site supervisor is to be notified immediately.
3. The site supervisor is to notify the project manager immediately after being notified.
4. The Project Manager is to consult suitably qualified personnel to determine the appropriate course of action. This may require contacting an archaeologist.
5. If the archaeologist reports that there is no evidence that the area is of significance then this report will result in the Project Manager authorising work to recommence.
6. For isolated artefact finds, the archaeologist may recommend putting the material to one side to be recorded by an archaeologist at a later date on site.
7. If the archaeologist reports that there is evidence that the area is of significance this report will result in the Project Manager consulting with relevant authorities to determine the management of the site in accordance with all appropriate Legislation, Criterion and Guidance.
8. If skeletal material is found, the Project Manager must contact the Police and the Coroner's Office. The police treat any uncovered skeletal material as a crime scene until proven otherwise.
9. If the skeletal material is found to be of Aboriginal origin, the find will be reported to the DIA and dealt with appropriately by the DIA.
10. The archaeologist will report to the Project Manager regarding the re-commencement of works (except in the situation of the discovery of skeletal remains).
11. The Project Manager will ensure that each incident is recorded including the date of discovery, steps taken upon discovery, photographs (if possible) and the outcome.

4 ENVIRONMENTAL MANAGEMENT POST CONSTRUCTION

4.1 Retained Vegetation

Vehicle and pedestrian access will not be allowed through areas of designated retained vegetation as shown on the DA for individual industries. No additional clearing other than that shown on the DA can be undertaken.

4.2 Landscaping

Proposed landscape plans for each of the lots must be submitted with Development Applications.

4.2.1 Species List

This species list was developed to provide a selection of waterwise, native and non-invasive plants to be used within the developed lots. As much as possible the species to be used within lots must be taken from this list.

Table 2: Landscaping Species List

Life Form	Species
Trees	<i>Agonis flexuosa</i> WA Peppermint Tree
	<i>Casuarina equisetifolia</i>
	<i>Callistemon</i> 'Kings Park Special'
	<i>Eucalyptus gomphocephala</i> Tuart
	<i>Eucalyptus ficifolia</i> Red Flowering Gum
	<i>Eucalyptus decipiens</i>
	<i>Eucalyptus foecunda</i>
	<i>Jacaranda mimosifolia</i> Jacaranda
	<i>Melaleuca raphiophylla</i> Swamp Paperbark
	<i>Pyrus calleryana</i> Callery Pear
	<i>Pyrus nivalis</i> Snow Pear
	<i>Sapium sebiferum</i> Chinese Tallow
Feature Trees	<i>Macrozamia riedlei</i> Zamia Palm
	<i>Xanthorrhoea preissii</i> Grass Tree
	<i>Xanthorrhoea brunonis</i>
Shrubs	<i>Acacia truncata</i>
	<i>Agonis flexuosa</i> 'nana'
	<i>Alyogyne huegelii</i>
Shrubs	<i>Banksia littoralis</i>
	<i>Banksia nivea</i> (syn <i>Dryandra nivea</i>)
	<i>Baumea juncea</i>
	<i>Beaufortia aestiva</i> 'Summer Flame'
	<i>Comesperma virgatum</i>
	<i>Callistemon</i> 'Endeavor'
	<i>Callistemon</i> 'Great balls of Fire'
	<i>Calothamnus quadrifidus</i> One Sided Bottle Brush

Life Form	Species
Shrubs	<i>Callistemon</i> 'Little John'
	<i>Eremophila glabra</i>
	<i>Eremophila glabra</i> 'Kalbarri Carpet'
	<i>Grevillea</i> "Carpet Crawl"
	<i>Grevillea</i> 'Bronze Rambler'
	<i>Grevillea</i> 'Sea Spray'
	<i>Grevillea</i> 'Bon Fire'
	<i>Grevillea preissii</i> Spider Net Grevillea
	<i>Grevillea</i> 'Gin Gin Gem'
	<i>Grevillea</i> 'Superb'
	<i>Grevillea hookeriana</i>
	<i>Gahnia trifida</i>
	<i>Hakea prostrata</i>
	<i>Hakea varia</i>
	<i>Hibbertia hypericoides</i> Yellow Buttercups
	<i>Hibbertia racemosa</i> Stalked Guinea Flower
	<i>Hibbertia cuneiformis</i>
	<i>Jacksonia furcellata</i>
	<i>Leucopogon parviflorus</i>
	<i>Leucopogon australis</i>
	<i>Logania vaginalis</i>
	<i>Melaleuca incana</i> 'Nana'
	<i>Melaleuca</i> 'Little penta'
	<i>Melaleuca huegelii</i> Chenille Honey Myrtle
	<i>Melaleuca nesophila</i>
	<i>Melaleuca lateritia</i>
	<i>Melaleuca lanceolata</i>
	<i>Melaleuca teretifolia</i>
	<i>Melaleuca viminea</i>
	<i>Olearia</i> 'Little Smoke'
	<i>Olearia axillaris</i>
	<i>Orthrosanthus laxus</i> nana Dwarf Morning Iris
	<i>Patersonia occidentalis</i> Purple Flag
	<i>Phyllanthus calycinus</i>
	<i>Rhagodia baccata</i> subsp. <i>Baccata</i>
	<i>Rhodanthe chlorocephala</i> var <i>rosea</i>
	<i>Rhodanthe chlorocephala</i> var <i>splendida</i>
	<i>Samolus junceus</i>
	<i>Samolus repens</i>
	<i>Scaevola crassifolia</i> 'Flat Fred'
<i>Scaevola nitida</i> 'Sapphire Skies' Sapphire Skies	
<i>Scaevola albida</i> 'Super Clusters' Supper Clusters	
<i>Scaevola anchusifolia</i>	

Life Form	Species
Shrubs	<i>Scaevola thesioides</i>
	<i>Scaevola</i> 'Pink Perfection'
	<i>Spyridium globosa</i>
	<i>Stypandra glauca</i>
	<i>Templetonia retusa</i> Cockies Tongue
	<i>Thryptomene baeckeacea</i> (prostrate)
	<i>Thysanotus patersonii</i>
	<i>Trachymene coerulea</i>
	<i>Westringia fruticosa</i> prostrate
	<i>Westringia dwarf</i> 'Wild River' Wild River
Sub-shrubs	<i>Anigozanthos flavidus</i> Red Tall Red Kangaroo Paw
	<i>Anigozanthos flavidus</i> Yellow Tall Yellow Kangaroo Paw
	<i>Anigozanthos</i> 'Bush Pearl' Kangaroo Paw
	<i>Conostylis aculeata</i> Prickly Conostylis
	<i>Conostylis candicans</i> Grey Cottonheads
	<i>Dianella caerulea</i> Paroo Lily
	<i>Dianella revoluta</i> Flax lily
	<i>Lomandra maritima</i>
Sedges	<i>Carex appressa</i>
	<i>Ficinia nodosa</i>
	<i>Lepidosperma angustatum</i>
	<i>Lepidosperma gladiatum</i>
	<i>Lepidosperma longitudinale</i>
	<i>Lepidosperma squamatum</i>
Herbs	<i>Adriana quadripartita</i>
	<i>Centella asiatica</i>
	<i>Lobelia tenuior</i>
Climbers	<i>Clematis linearifolia</i>
	<i>Clematis pubescens</i>
	<i>Hardenbergia comptoniana</i> Native Wisteria
	<i>Hardenbergia</i> 'Pink Spray'
	<i>Kennedia coccinea</i>
	<i>Kennedia prostrata</i>
	<i>Muehlenbeckia adpressa</i>

Any species proposed to be used on the lots that is not on this list must be included on the Development Application that is submitted to Landcorp.

4.2.2 Source

Seed that is sourced from the subdivision area and local provenance tubestock will be used as much as possible in landscaping. All other stock to be used in the lots will be certified disease free prior to being used in landscaping areas.

4.2.3 Weed Management

Declared Weeds for Western Australia are listed under the *Agriculture and Related Resources Protection Act 1976*. Managers of lots must eradicate any Declared Weeds from within lots.

4.3 Waste Management

A Waste Management Plan (WMP) is required to be lodged with a Building Licence application. This management plan must address the control of litter from the individual development during construction and show plans to incorporate rubbish management in the design of the development on the lot.

4.4 Fire Management

Individual developments abutting the Conservation Area will be required to prepare Fire Management Plans that address individual requirements depending on the industry on the site and their surrounds.

5 ENVIRONMENTAL MANAGEMENT OF INTERFACES

5.1 Between Development Lots and the Conservation Area

The western boundary between the Conservation Area and the development is shown in the Structure Plan (Appendix 1) as General Industry with lot sizes between 2 and 5 hectares. The eastern boundary consists of the existing Wool Scouring Plant, General Industry of Lots between two and five hectares to the south of this plant and Heavy to General Transition lots to the north of this plant. The northern boundary of the Conservation Area abuts the Water Corporation Waste Water Treatment Plant site. The southern boundary abuts existing development which is not subject to this EMP.

A 1.8m cyclone fence has been installed around the Conservation Area and access points have been included in the fence. The access points were determined with the DEC and the City of Rockingham Emergency Response Department and have been installed to ensure there is adequate access to the Conservation Area in case of a fire or emergency. The two southern access points pass through the railway reserve and the access points on the eastern boundary align with Lodge Road and Chesterfield Road reserves which will be retained as roads in the development. The access point on the north-west corner of the Conservation Area will be maintained by the extension of Alumina road with a 4m trafficable path. Access to the central western point will be required to be shown in the DA for the industry to be located in this lot to enable access to the Conservation Area for emergency vehicles. Access points to the Conservation Area will be kept clear at all times in case of an emergency.

Industries located on the interface of the Conservation Area will be required to:

- Maintain the fence between the Lot and the Conservation Area;
- Control rubbish, litter and waste on-site to ensure this does not encroach into the Conservation Area in accordance with individual development's approved Waste Management Plans;
- Maintain an adequate fire break between the Lot and the Conservation Area boundary as well as between any industrial activity that poses a fire risk in accordance with the RIZ Fire Management Strategy and individual development's approved Fire Management Plans; and
- Prevent any adverse impacts on the Conservation Area as a result of the industrial activities.

No vehicles involved in clearing or earthworks and no soil or mulch from clearing activities in lots will be permitted to be moved into the Conservation Area unless specifically authorised by Landcorp. This will reduce the potential for introduction of any pathogens or weeds to the Conservation Area.

All industries to be located in the area adjacent to the Conservation Area will be provided with an information package regarding the significance of the bushland and their role in protecting the site.

5.2 Between Lots and Retained Vegetation

Individual industries that have retained vegetation will be required to:

- Control rubbish, litter and waste on-site to ensure this does not collect within retained vegetation in accordance with individual development's approved Waste Management Plans;
- Maintain adequate fire breaks in accordance with the RIZ Fire Management Strategy and individual development's approved Fire Management Plans; and
- Prevent any adverse impacts on the retained vegetation as a result of the industrial activities.

5.3 Between Lots and Re-created Wetlands

Sections of road reserves will be constructed with long linear drainage swales that will be planted with species typical to TEC19 to satisfy Condition 14a of the approval of the development under the *Environment Protection and Biodiversity Conservation Act, 1999* (Appendix 3 and Appendix 5). These TEC replacement areas will be maintained in perpetuity.

Industries that are located on lots adjacent to this drainage infrastructure will not clear any of the planted vegetation for any purpose. No activity that may impact on the vegetation may be undertaken such as parking of vehicles or installation of vehicle or pedestrian crossover other than in the approved subdivision plan.

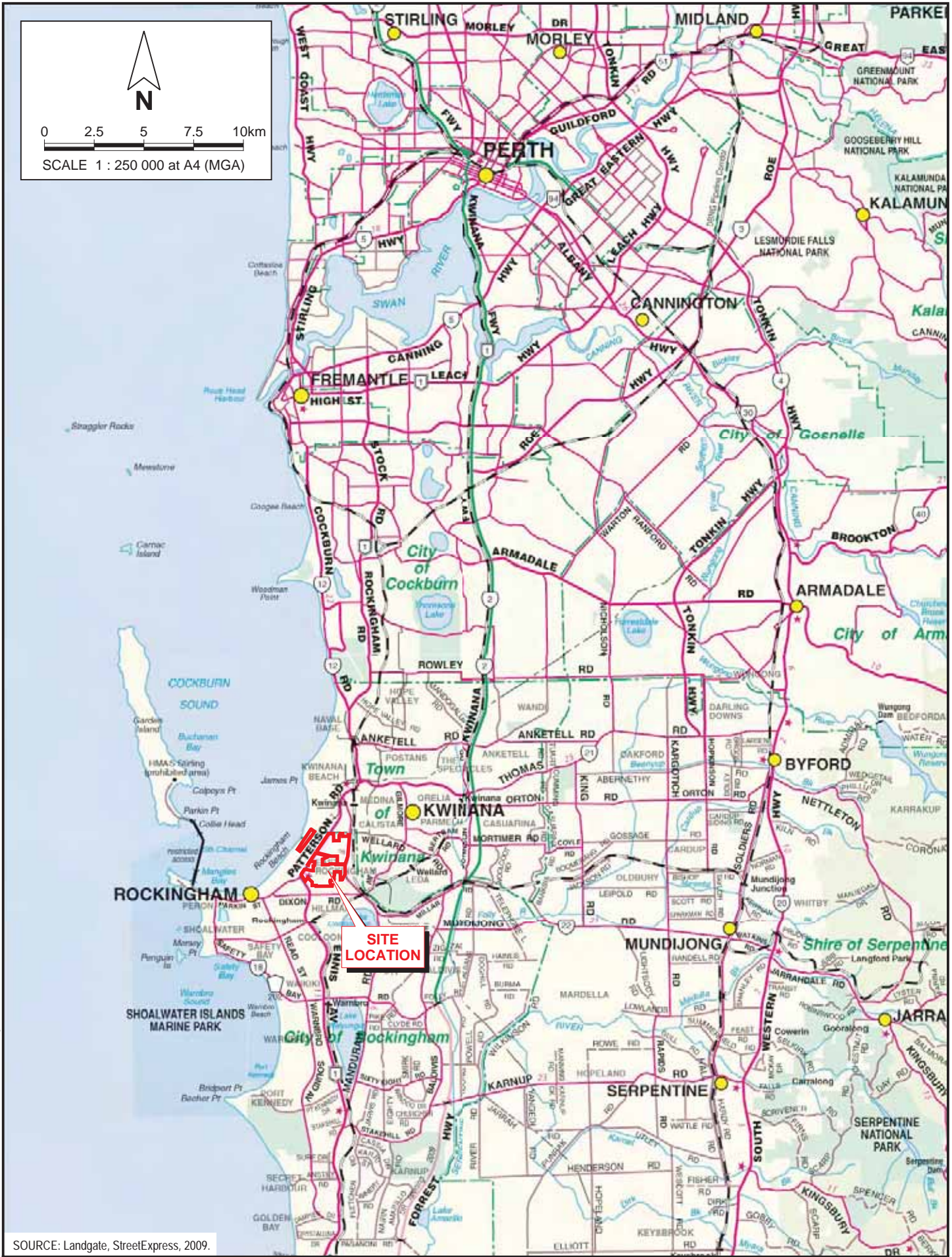
6 REVIEW OF THE MANAGEMENT PLAN

This management plan will be reviewed every five years with the first review due in 2018.

7 REFERENCES

- ATA Environmental (2006). *East Rockingham Industrial Park (IP14 Area) – Flora and Vegetation Survey*. Report No. 2002/06.
- Coffey Environments (2009) *Rockingham Industry Zone Fauna Risk Assessment* Report Number EP2005/55
- Coffey Environments (2010) *Rockingham Industry Zone Strategic Environmental Assessment (Previously known as IP14 Area)* Report Number EP2005/58
- Government of Western Australia (2000) *Bush Forever – Keeping the Bush in the City*. Volume 1: Policies, Principles and Processes. Perth, WA.
- PGV Environmental (2012) *Construction Environmental Management Plan* Prepared for Landcorp. Report Number 2011-29
- Trudgen, M. E. (1988). *A Report on the Flora and Vegetation of the Port Kennedy Area*. Unpublished report prepared for Bowman Bishaw and Associates, West Perth.

FIGURES



SOURCE: Landgate, StreetExpress, 2009.



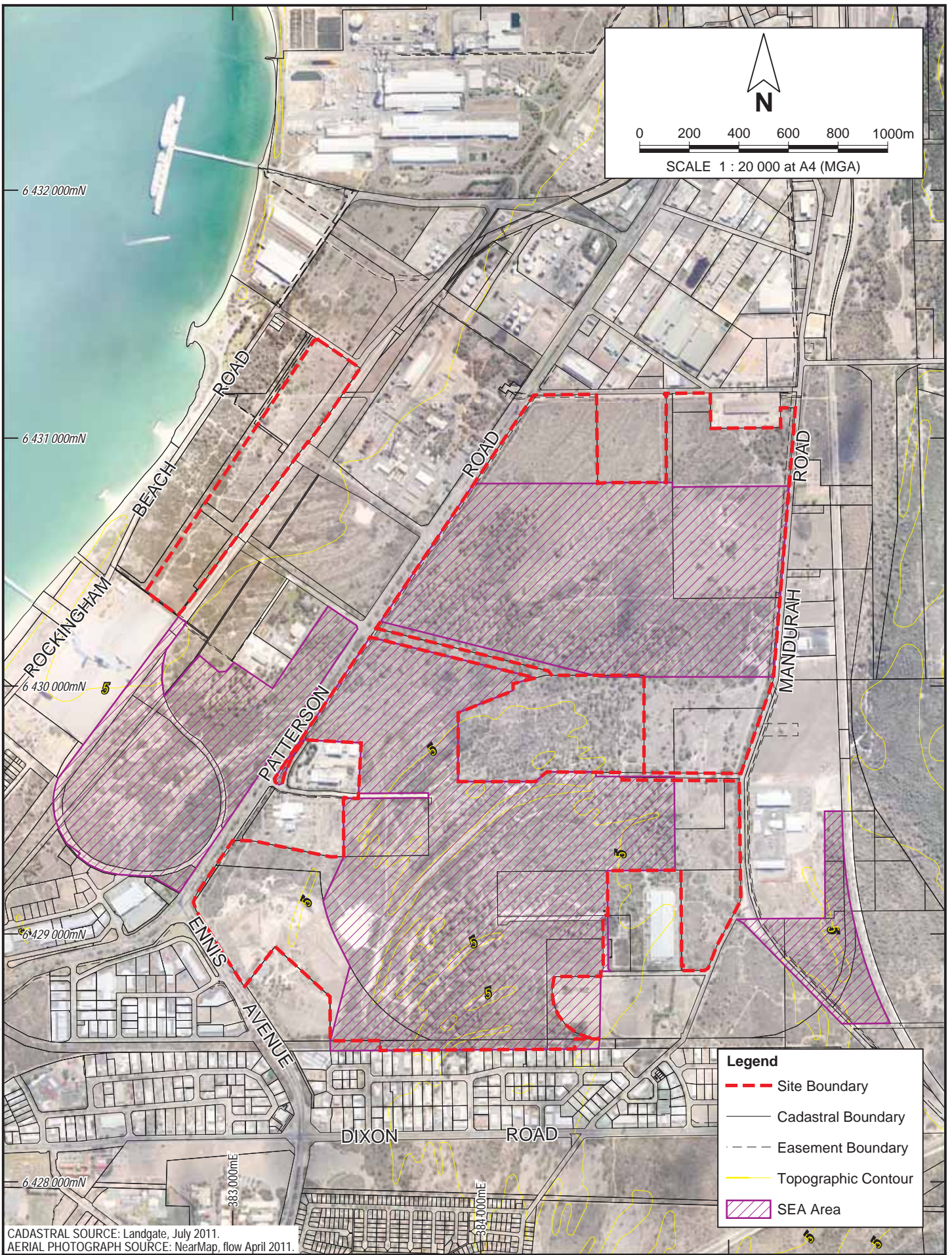
Landcorp
ENVIRONMENTAL MANAGEMENT PLAN
RIZ

Drawn: J. Hams	Date: 20 Jul 2012
Job: 10010H	Revision: A

REGIONAL LOCATION

Figure 1

PINPOINT CARTOGRAPHICS (08) 9562 7136 10010H-01.dgn



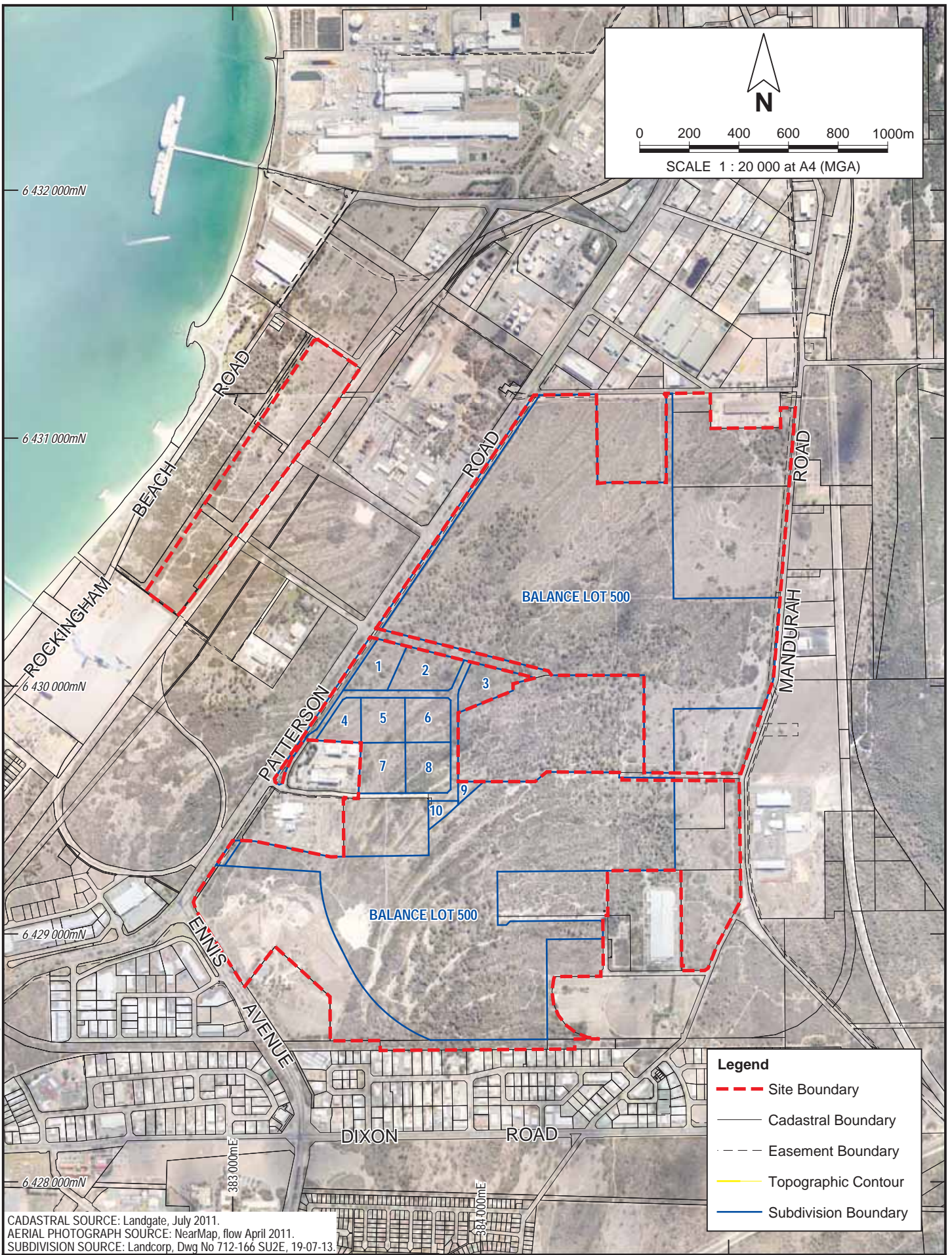
PINPOINT CARTOGRAPHICS (08) 9562 7136 10010H-r02.dgn

Drawn: J. Hams	Date: 14 Oct 2013
Job: 10010H	Revision: A

Landcorp
 ENVIRONMENTAL MANAGEMENT PLAN
 RIZ

SITE BOUNDARY AND TOPOGRAPHY

Figure 2



CADASTRAL SOURCE: Landgate, July 2011.
 AERIAL PHOTOGRAPH SOURCE: NearMap, flow April 2011.
 SUBDIVISION SOURCE: Landcorp, Dwg No 712-166 SU2E, 19-07-13.

Legend

- - - Site Boundary
- Cadastral Boundary
- - - Easement Boundary
- Topographic Contour
- Subdivision Boundary

PINPOINT CARTOGRAPHICS (08) 9562 7136 10010H-r03.dgn

pgv ENVIRONMENTAL

Drawn: J. Hams	Date: 14 Oct 2013
Job: 10010H	Revision: A

Landcorp
 ENVIRONMENTAL MANAGEMENT PLAN
 RIZ

PROPOSED SUPERLOTS

Figure 3

APPENDIX 1
RIZ Structure Plan

EAST ROCKINGHAM INDUSTRIAL PARK IP-14 STRUCTURE PLAN (MARCH 2013)

LEGEND:

- Improvement Plan 14 Boundary
- Local Government Authority Boundary
- Cadastral (existing)
- Conceptual subdivision design
- Railway (existing)
- Possible future rail
- ERWWTP Buffer (SCA)
- Water Corporation Inlet Corridor
- Service Corridor
- SEA Boundary

INDUSTRIAL PRECINCT

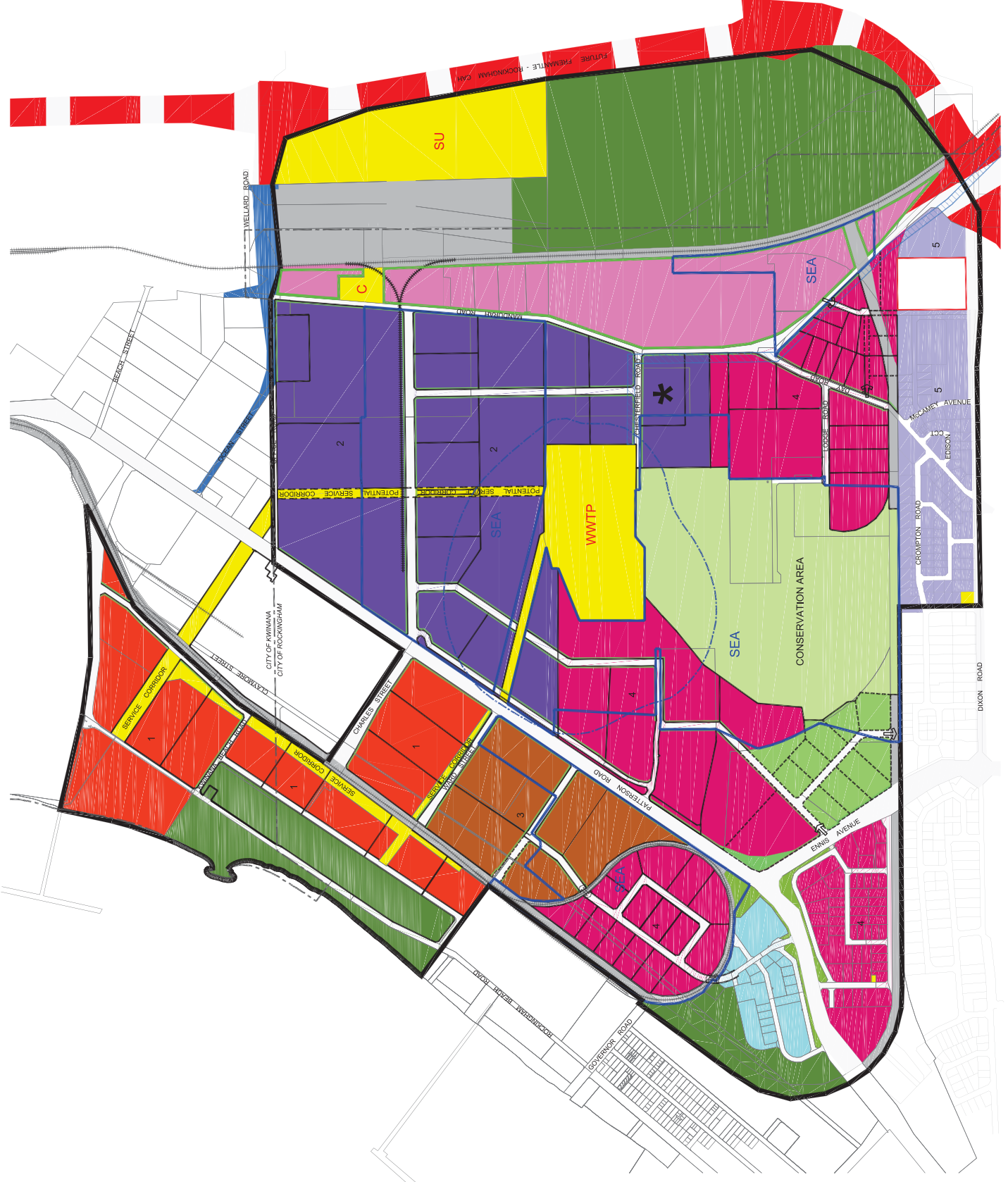
- PRECINCT 1 Port Related Industry
- PRECINCT 2 Environmentally Acceptable Heavy Industry
- PRECINCT 3 Advanced Materials Park
- PRECINCT 4 General Industry
- PRECINCT 5 Light Industry
- SPECIAL USE - Garden Industrial Precinct

OTHER LAND USES

- Controlled Access Highway
- Other Regional Road Reserve
- Existing Rail or Rail Reserve
- Service Commercial
- Public Purposes - denoted as follows:
 - SU
 - C
- Cemetery
- Waste Water Treatment Plant
- Conservation Area
- Parkland Buffer
- Public Open Space (Disused Rubbish Tip) Reserve for Recreation
- Landscaped Strip
- Special Use: Caravan Park

OTHER

- Proposed Local Amenity Node (Chesterfield Inn heritage site and surrounds)
- Possible access



APPENDIX 2

Ministerial Statement 863

STATUS OF THIS DOCUMENT

This document has been produced by the Office of the Appeals Convenor as an electronic version of the original Statement for the proposal listed below as signed by the Minister and held by this Office. Whilst every effort is made to ensure its accuracy, no warranty is given as to the accuracy or completeness of this document.

The State of Western Australia and its agents and employees disclaim liability, whether in negligence or otherwise, for any loss or damage resulting from reliance on the accuracy or completeness of this document.

Copyright in this document is reserved to the Crown in right of the State of Western Australia. Reproduction except in accordance with copyright law is prohibited.

Published on: 26 May 2011

Statement No. 863

**STATEMENT THAT A PROPOSAL MAY BE IMPLEMENTED
(PURSUANT TO THE PROVISIONS OF THE
ENVIRONMENTAL PROTECTION ACT 1986)**

**ROCKINGHAM INDUSTRIAL ZONE STRATEGIC ENVIRONMENTAL
ASSESSMENT (FORMERLY IP14)**

Proposal: The strategic proposal is to identify a development footprint for future industrial development over a 339 hectare area of the Rockingham Industrial Zone, while retaining an area as a conservation reserve.

The strategic proposal and identification of derived proposals is further documented in schedule 1 of this statement.

Proponent: Landcorp

Proponent Address: Level 3
Wesfarmers House
40 The Esplanade
Perth WA 6000

Assessment Number: 1534

Report of the Environmental Protection Authority: Report 1390

The strategic proposal and future proposals referred to in the above report of the Environmental Protection Authority may be implemented. The implementation of the proposal shall be subject to the following conditions and procedures (subject to the Minister for Environment's identification of relevant conditions under section 45A(3) of the *Environmental Protection Act 1986*):

1 Proponent Nomination and Contact Details

1-1 The proponent for the time being nominated by the Minister for Environment under sections 38(6) or 38(7) of the *Environmental Protection Act 1986* is responsible for the implementation of the proposal.

1-2 The proponent shall notify the Chief Executive Officer of the Department of Environment and Conservation of any change of the name and address of the proponent for the serving of notices or other correspondence within 30 days of such change.

2 Time Limit of Authorisation for Strategic Proposal

2-1 The authorisation provided for in this statement to request a derived proposal under section 39B(1) of the *Environmental Protection Act 1986* shall lapse and be void 20 years after the date of this statement.

3 Time Limit of Authorisation for a Derived Proposal

3-1 The authorisation to implement a derived proposal provided for in this statement shall lapse and be void five years after the declaration of the Environmental Protection Authority under section 39B(3) of the *Environmental Protection Act 1986* that the proposal is a derived proposal.

4 Compliance Reporting

4-1 The proponent shall prepare and submit a compliance assessment plan to the satisfaction of the Chief Executive Officer of the Office of the Environmental Protection Authority at least 6 months prior to the first compliance report required by condition 4-6 or prior to the commencement of future proposals, whichever is sooner.

4-2 The proponent shall implement and maintain to the satisfaction of the Chief Executive Officer of the Office of the Environmental Protection Authority the compliance assessment plan required by condition 4-1. The compliance assessment plan shall indicate:

1. the frequency of compliance reporting;
2. the approach and timing of compliance assessments;
3. the retention of compliance assessments;
4. the reporting of potential non-compliances and corrective actions taken;
5. the table of contents of compliance reports; and
6. the public availability of compliance reports.

4-3 The proponent shall assess compliance with conditions in accordance with the compliance assessment plan required by condition 4-1.

4-4 The proponent shall retain reports of all compliance assessments described in the compliance assessment plan required by condition 4-1 and shall make those reports available when requested by the Chief Executive Officer of the Office of the Environmental Protection Authority.

- 4-5 The proponent shall advise the Chief Executive Officer of the Office of the Environmental Protection Authority of any potential non-compliance as soon as practicable.
- 4-6 The proponent shall submit a compliance assessment report annually from the date of the Minister for Environment's notice under section 45A(2) of the *Environmental Protection Act 1986* addressing the previous twelve month period or other period as agreed by the Chief Executive Officer of the Office of the Environmental Protection Authority. The compliance assessment report shall:
1. be endorsed by the proponent's Managing Director or a person, approved in writing by the Office of the Environmental Protection Authority, delegated to sign on the Managing Director's behalf;
 2. include a statement as to whether the proponent has complied with the conditions;
 3. identify all potential non-compliances and describe corrective and preventative actions taken;
 4. be made publicly available in accordance with the compliance assessment plan; and
 5. indicate any proposed changes to the compliance assessment plan required by condition 4-1.

5 Conservation Area

- 5-1 Within 6 months of the date of this statement the proponent shall fence the Conservation Area, as delineated by Figure 1 and Table 2, to assist in preventing unauthorised access, and shall maintain the fencing until such time as the land is ceded to the Conservation Commission of Western Australia.
- 5-2 Within 6 months of the date of this statement the proponent shall remove all dumped rubbish from the Conservation Area and thereafter the proponent shall maintain the Conservation Area free of rubbish until such time as the land is ceded to the Conservation Commission of Western Australia.
- 5-3 Within two years of the date of this statement the proponent shall prepare an Initial Conservation Area Management Plan for the Conservation Area to the satisfaction of the Chief Executive Officer of the Office of the Environmental Protection Authority on advice from the Department of Environment and Conservation. The objective of this Initial Conservation Area Management Plan is to improve the condition of the Conservation Area to a level suitable for incorporation into the Conservation Estate.

The Initial Conservation Area Management Plan will address:

1. Protecting and rehabilitating the threatened ecological community *Sedgelands in Holocene dune swales of the Southern Swan Coastal Plain*;
 2. Maintenance of fencing of the area to control access to designated areas within the Conservation Area;
 3. Design and implementation of appropriate monitoring of the vegetation within the Conservation Area, including the threatened ecological community *Sedgelands in Holocene dune swales of the Southern Swan Coastal Plain*;
 4. Design and implementation of appropriate monitoring of hydrology including groundwater levels and quality and contingencies in the event of unacceptable hydrological impacts;
 5. Maintaining the Conservation Area free of dumped rubbish;
 6. Rehabilitation of degraded areas within the Conservation Area including tracks not required for strategic access;
 7. The control of feral animal populations in the Conservation Area;
 8. Weed control in the Conservation Area;
 9. Fire prevention and response;
 10. Enhancement of the fauna habitat in the area by providing harvested and artificial breeding infrastructure for significant fauna;
 11. Using artificial polishing drainage basins outside of the Conservation Area, for the re-infiltration of stormwater into the Conservation Area; and
 12. Completion criteria for handover to another management authority.
- 5-4 The proponent shall implement the Initial Conservation Area Management Plan required by Condition 5-3 until the Conservation Area is ceded to the Conservation Commission of Western Australia
- 5-5 When the completion criteria of Condition 5-3-12 are met, or within two years of a written request from the Department of Environment and Conservation, the proponent will arrange to cede the Conservation Area to the Conservation Commission of Western Australia.
- 5-6 Within one year of ceding land (pursuant to Condition 5-5) the proponent shall prepare a Conservation Area Management Plan to the satisfaction of the Chief Executive Officer of the Office of the Environmental Protection Authority on advice from the Department of Environment and Conservation. The

objective of this Conservation Area Management Plan is to guide continued management of the conservation values of the area.

The Conservation Area Management Plan will address:

1. Protecting and rehabilitating the threatened ecological community *Sedgelands in Holocene dune swales of the Southern Swan Coastal Plain*;
2. Maintenance of fencing of the area to control access to designated areas within the Conservation Area;
3. Ongoing vegetation monitoring of the threatened ecological community *Sedgelands in Holocene dune swales of the Southern Swan Coastal Plain*;
4. Ongoing monitoring of hydrology including groundwater levels and quality and implementation of contingencies in the event of unacceptable hydrological impacts;
5. Management of rehabilitated areas within the Conservation Area
6. The control of feral animal populations in the Conservation Area;
7. Weed control in the Conservation Area;
8. Fire prevention and response;
9. Enhancement of the fauna habitat in the area by providing harvested and artificial breeding infrastructure for Carnaby's Cockatoos; and
10. Using artificial polishing drainage basins outside of the Conservation Area for the re-infiltration of stormwater into the Conservation Area.

6 Water Management Strategy

- 6-1 Within two years of the date of this statement the proponent shall prepare a Water Management Strategy to the requirements of the Chief Executive Officer of the Office of the Environmental Protection Authority on advice from the Department of Environment and Conservation and the Department of Water.

The Water Management Strategy will address:

1. Managing stormwater as a resource;
2. Maintaining stormwater and groundwater quality to pre-development levels;
3. Maintaining hydrology including water quality and levels of natural ecosystems;

4. Retaining or improving groundwater balance;
 5. Managing the salt wedge / Cockburn Sound interface;
 6. Creating industrial landscapes as ecologically functioning units; and
 7. Integrating Water Sensitive Urban Design within landscape at site, precinct and district scales.
- 6-2 The proponent shall implement the Water Management Strategy required by Condition 6-1.

7 Offsets

- 7-1 Within two years of the date of this statement the proponent shall prepare an Offsets Package to the requirements of the Chief Executive Officer of the Office of the Environmental Protection Authority on advice from the Department of Environment and Conservation that will ensure the rehabilitation of at least 9 hectares of threatened ecological community *Sedgeland*s in *Holocene dune swales of the Southern Swan Coastal Plain*, outside of the Strategic Environmental Assessment boundary, that requires active management in land managed by the Department of Environment and Conservation and at other high priority sites in the Rockingham region.
- 7-2 The proponent shall implement the Offsets Package required by Condition 7-1 within three years of the date of this statement.

HON BILL MARMION MLA
MINISTER FOR ENVIRONMENT; WATER

Schedule 1

The Strategic Proposal for the Rockingham Industrial Zone and Identification of Derived Proposals (Assessment No. 1534)

The Strategic Proposal is to:

- identify a development footprint for future industrial development within a 339 hectare section of the Rockingham Industrial Zone (the SEA Area shown in Figure 1);
- retain an area as a conservation area as delineated in Figure 1 and by coordinates in Table 2.

Derived proposals are expected to include:

- subdivision for industrial purposes; and
- the provision of infrastructure (such as roads, water services and power services) within the development footprint.

The main characteristics and the extent of derived proposals of the strategic proposal are summarised in Table 1 below.

Table 1: Summary of Key Proposal Characteristics

Strategic proposal	
Element	Description
Overall area	339 hectares of Rockingham Industrial Zone (SEA Area).
Development area:	All land within the SEA Area, excluding the Conservation Area.
Derived proposals	
Type of derived proposal	Key characteristics
Subdivision and provision of infrastructure.	<ul style="list-style-type: none"> • Within the development area • In accordance with the Water Management Strategy (of Condition 6-1). • Includes a Construction Environmental Management Plan to: <ul style="list-style-type: none"> - Retain, where practical, vegetation within the developed area; - Include a fauna trapping and relocation

	<p>program to be implemented in consultation with the Department of Environment and Conservation (DEC);</p> <ul style="list-style-type: none"> - Salvage potential breeding habitat for avifauna during clearing for integration into the Conservation Area; and - Establish vegetation in road reserves using appropriate local native species to provide linkages between areas of remnant vegetation. <ul style="list-style-type: none"> • Includes an Environmental Management Plan (overall or site specific) to guide future development of industry within the site to: <ul style="list-style-type: none"> - Retain, where practical, vegetation within the developed area, especially the threatened ecological community <i>Sedgelands in Holocene dune swales of the Southern Swan Coastal Plain</i>; - Include a fauna trapping and relocation program to be implemented in consultation with the DEC; and - Salvage potential breeding habitat for avifauna during clearing for integration into the Conservation Area.
--	--

Office of the Environmental Protection Authority
Figure 1: SEA Boundary and Conservation Area Boundary






Legend  Conservation Area  SEA Boundary	 Projection: Geographic Coordinate System Datum: Geocentric Datum of Australia, 1994 Scale: 1:20,000	This map is produced for the Environmental Protection Authority, for inclusion into a report on the Rockingham Industrial Park Project. This map depicts the boundaries of the Landcorp proposed conservation area in relation to the SEA and Threatened Ecological Community Areas.
	Data Source Landcorp Proposed Conservation Area (Landcorp - 2011) Threatened Ecological Community Areas - (Coffee, 2011) Seas Coastal Plan Imagery (Landgate - 2009)	Disclaimer This map is intended as a generalised interpretation of environmental issues. The information contained on this map is to be considered indicative only and it is advised that the Environmental Protection Authority be held liable for any accident or consequential damages resulting from use of the material. Copyright Environmental Protection Authority 2010. All Rights Reserved. All works and information displayed are subject to Copyright. For the reproduction or publication beyond that permitted by the Commonwealth Copyright Act 1968 written permission must be sought from the Authority.
Analysis not applicable	Presentation Map create date: 21/03/2011 Map create by: Euan Sutherland Map location:	

Figure 1: SEA Area and Conservation Area Boundary

Table 2: Co-ordinates defining the boundary of the Conservation Area

co-ordinates derived in GDA 94 MGA Zone 50

ID	Easting	Northing
1	383863.69	6429479.27
2	383926.94	6429537.90
3	383962.12	6429569.02
4	384013.19	6429614.58
5	384219.74	6429614.68
6	384244.25	6429635.26
7	384551.58	6429634.96
8	384558.70	6429634.99
9	384562.18	6429255.29
10	384511.07	6429254.87
11	384512.58	6429074.48
12	384492.56	6429074.31
13	384492.81	6429044.20
14	384494.36	6428859.42
15	384484.45	6428849.34
16	384484.61	6428829.36
17	384298.45	6428827.86
18	384294.35	6428827.86
19	384285.65	6428798.95
20	384324.40	6428639.14
21	384341.24	6428639.02
22	384378.42	6428588.06
23	384379.61	6428535.65
24	384268.47	6428534.84
25	383934.89	6428532.42
26	383597.19	6428529.97
27	383603.50	6428698.24
28	383486.31	6428859.12
29	383486.31	6428935.12
30	383543.70	6428947.53
31	383559.21	6429068.50
32	383557.66	6429135.19
33	383720.51	6429363.17
34	383790.19	6429419.72
35	383863.69	6429479.27

Attachment 1 to Ministerial Statement 863

Change to proposal under s45C of the *Environmental Protection Act 1986*

Proposal: Rockingham Industrial Zone Strategic Environmental Assessment (Formerly IP14)

Proponent: LandCorp

Change: Add 4.36 hectares to the Rockingham Industrial Zone Strategic Proposal area

The strategic proposal is to identify a development footprint for future industrial development over a 339 hectare area of the Rockingham Industrial Zone, while retaining an area as a conservation reserve.

Table 1. Summary of Key Proposal Characteristics: this table replaces Table 1 in Schedule 1.

Strategic proposal		
Element	Description of proposal	Description of approved change to proposal
Overall area	339 hectares of Rockingham Industrial Zone (SEA Area)	343.36 hectares of Rockingham Industrial Zone (SEA Area)
Development area	All land within the SEA Area, excluding the Conservation Area	All land within the SEA Area, excluding the Conservation Area.
Derived proposals		
Type of derived proposal	Key characteristics	Key characteristics
Subdivision and provision of infrastructure.	Within the development area <ul style="list-style-type: none"> • In accordance with the Water Management Strategy (of Condition 6-1). • Includes a Construction Environmental Management Plan to: <ul style="list-style-type: none"> - Retain, where practical, vegetation within the developed area; - Include a fauna trapping and relocation program to 	Within the development area <ul style="list-style-type: none"> • In accordance with the Water Management Strategy (of Condition 6-1). • Includes a Construction Environmental Management Plan to: <ul style="list-style-type: none"> - Retain, where practical, vegetation within the developed area; - Include a fauna trapping and relocation program to

Strategic proposal		
Element	Description of proposal	Description of approved change to proposal
	<p>be implemented in consultation with the Department of Environment and Conservation (DEC);</p> <ul style="list-style-type: none"> - Salvage potential breeding habitat for avifauna during clearing for integration into the Conservation Area; and - Establish vegetation in road reserves using appropriate local native species to provide linkages between areas of remnant vegetation. <ul style="list-style-type: none"> • Includes an Environmental Management Plan (overall or site specific) to guide future development of industry within the site to: <ul style="list-style-type: none"> - Retain, where practical, vegetation within the developed area, especially the threatened ecological community <i>Sedgeland</i>s in <i>Holocene dune swales of the Southern Swan Coastal Plain</i>; - Include a fauna trapping and relocation program to be implemented in consultation with the DEC; and - Salvage potential breeding habitat for avifauna during clearing for integration into the Conservation Area. 	<p>be implemented in consultation with the Department of Environment and Conservation (DEC);</p> <ul style="list-style-type: none"> - Salvage potential breeding habitat for avifauna during clearing for integration into the Conservation Area; and - Establish vegetation in road reserves using appropriate local native species to provide linkages between areas of remnant vegetation. <ul style="list-style-type: none"> • Includes an Environmental Management Plan (overall or site specific) to guide future development of industry within the site to: <ul style="list-style-type: none"> - Retain, where practical, vegetation within the developed area, especially the threatened ecological community <i>Sedgeland</i>s in <i>Holocene dune swales of the Southern Swan Coastal Plain</i>; - Include a fauna trapping and relocation program to be implemented in consultation with the DEC; and - Salvage potential breeding habitat for avifauna during clearing for integration into the Conservation Area.

Note: Text in **bold** in the Key Characteristics Table, indicates change/s to the proposal.

Replacement Figure:

Figure 1. SEA Area and Conservation Area Boundary: this Figure replaces Figure 1 of Schedule 1.

[Signed 4 October 2013]




Dr Paul Vogel
CHAIRMAN
Environmental Protection Authority
under delegated authority

Rockingham Industrial Zone - SEA, Conservation and Proposed Additional Area boundaries

Map Version: 1.10
 Date: 01/10/2013
 Created By: B. Smith



LEGEND

-  s45 Proposed Additional Area
-  Conservation Area
-  SEA Boundary

SOURCE DATA
 Landgate: Roads
 SLIP: Metro Central Jan 2013 Mosaic
 Proponent: SEA, Additional Area 20130926
 Location Path: \\oeppavf01\GIS\Projects\epasu\minor_projects\eia\20110110_Rockingham_industrial_zone_SEA_maps

Disclaimer:
 This map is intended as a generalised interpretation of environmental issues. The information contained on this map is to be considered indicative only and in no event shall the Environmental Protection Authority be liable for any incident or consequential damages resulting from use of the material.
 Copyright: Environmental Protection Authority, 2012. All Rights Reserved.
 All works and information displayed are subject to Copyright. For the reproduction or publication beyond that permitted by the Commonwealth Copyright Act 1968 written permission must be sought from the Authority.



0 250 500 1,000
 Metres

Projection: Map Grid of Australia Zone 50
 Datum: Geocentric Datum of Australia, 1994
 Scale: 1:20,000

LOCALITY MAP



APPENDIX 3

Notice of Approval under the EPBC Act



Approval

Rockingham Industrial Zone, WA (EPBC 2010/5337)

This decision is made under sections 130(1) and 133 of the *Environment Protection and Biodiversity Conservation Act 1999*.

Proposed action

person to whom the approval is granted Western Australian Land Authority

proponent's ACN (if applicable) 34 868 192 835

proposed action The development of 339 ha of land in Rockingham, WA, for industrial purposes (the Rockingham Industry Zone, [See EPBC Act referral 2010/5337]).

Approval decision

Controlling Provision	Decision
Listed threatened species and communities (sections 18 & 18A)	Approved

conditions of approval

This approval is subject to the conditions specified below.

expiry date of approval

This approval has effect until 31 December 2035.

Decision-maker

name and position Barbara Jones
Assistant Secretary
Environment Assessment Branch

signature

date of decision 30 November 2011

Conditions attached to the approval

1. Within 30 days after the **commencement** of the action, the person taking the action must advise the **Department** in writing of the actual date of **commencement**.
2. The person taking the action must maintain accurate records substantiating all activities associated with or relevant to the conditions of approval, including measures taken to implement the management plans or strategy required by this approval, and make them available upon request to the **Department**. Such records may be subject to audit by the **Department** or an independent auditor in accordance with section 458 of the EPBC Act, or used to verify compliance with the conditions of approval. Summaries of audits will be posted on the **Department's** website. The results of audits may also be publicised through the general media.
3. Within three months of every 12 month anniversary of the **commencement** of the action, the person taking the action must publish a report on their website addressing compliance with each of the conditions of this approval, including implementation of any management plans or strategies as specified in the conditions. Documentary evidence providing proof of the date of publication and non-compliance with any of the conditions of this approval must be provided to the **Department** at the same time as the compliance report is published.
4. Upon the direction of the **Minister**, the person taking the action must ensure that an independent audit of compliance with the conditions of approval is conducted and a report submitted to the **Minister**. The independent auditor must be approved by the **Minister** prior to the **commencement** of the audit. Audit criteria must be agreed to by the **Minister** and the audit report must address the criteria to the satisfaction of the **Minister**.
5. If the person taking the action wishes to carry out any activity otherwise than in accordance with the management plans or strategy, as specified in the conditions, the person taking the action must submit to the **Department** for the **Minister's** written approval a revised version of that management plans or strategy. The varied activity shall not commence until the **Minister** has approved the varied management plan or strategy in writing. The **Minister** will not approve a varied management plan or strategy unless the revised management plans or strategy would result in an equivalent or improved environmental outcome over time. If the **Minister** approves the revised management plan or strategy, that management plan or strategy, must be implemented in place of the management plans or strategy originally approved.
6. If the **Minister** believes that it is necessary or convenient for the better protection of Listed threatened species and communities (sections 18 & 18A) to do so, the **Minister** may request that the person taking the action make specified revisions to the management plans or strategy specified in the conditions and submit the revised management plans or strategy for the **Minister's** written approval. The person taking the action must comply with any such request. The revised approved management plans or strategy must be implemented. Unless the **Minister** has approved the revised management plans or strategy, then the person taking the action must continue to implement the management plan or strategy originally approved, as specified in the conditions.
7. If, at any time after 5 years from the date of this approval, the person taking the action has not commenced the action, then the person taking the action must not **commence** the action without the written agreement of the **Minister**.

8. Unless otherwise agreed to in writing by the **Minister**, the person taking the action must publish all management plans and strategies referred to in these conditions of approval on their website. Each management plan and strategy must be published on the website within 1 month of being approved.
9. By 31 December of each year after the commencement of the action, the person taking the action must publish a report on their website addressing compliance with the conditions of this approval over the previous 12 months, including implementation of any management plans as specified in the conditions. Non-compliance with any of the conditions of this approval must be reported to the **Department** at the same time as the compliance report is published. These reports must remain available on the internet for at least 5 years after they are published.

10. Conservation Area

To protect the threatened ecological community *Sedgeland*s in Holocene dune swales of the Southern Swan Coastal Plain (TEC) and habitat for **Black Cockatoos** the person taking the action must establish a Conservation Area of at least 90.5 ha prior to the **commencement of construction**, as identified by the area within the blue line on the map (at Attachment A). The person taking the action must:

- (a) include at least 18.72 ha of the TEC within the Conservation Area;
- (b) prior to **commencement of construction**, provide the **Department** with written evidence that the Conservation Area will be protected and managed in perpetuity by a **recognised conservation organisation**;
- (c) within five years of the date of this approval, vest management and ownership of the conservation area with a **recognised conservation organisation**.

11. Conservation Area Management Plan

To protect and enhance the threatened ecological community *Sedgeland*s in Holocene dune swales of the Southern Swan Coastal Plain (TEC) and habitat for **Black Cockatoos** within the Conservation Area the person taking the action must prepare and submit a Conservation Area Management Plan (CAMP) for the **Minister's** approval. The person taking the action must not **commence construction** unless the **Minister** has approved the CAMP. The CAMP must be prepared in consultation with DEC and the WA Office of the Environmental Protection Authority (EPA).

The CAMP must include the following requirements:

- (a) Management measures to protect and enhance the TEC and **Black Cockatoo** habitat;
- (b) Measures to determine the effectiveness of all management measures for the TEC and **Black Cockatoo** habitat;
- (c) Construction of a permanent fence around the perimeter of the conservation area;
- (d) Management of weeds and feral animals, including monitoring requirements to determine the effectiveness of the weed and feral animal management;
- (e) Management of fire regime, and monitoring requirements to determine the effectiveness of the fire management, and
- (f) Rehabilitation works for degraded areas, including rubbish removal, and including monitoring requirements to determine the effectiveness of the rehabilitation.

If the **Minister** approves the CAMP then the approved CAMP must be implemented.

12. Black Cockatoo Habitat

To protect and enhance habitat for **Black Cockatoos**, the person taking the action:

- (a) May not clear more than 830 Tuart trees (*Eucalyptus gomphocephala*) that are greater than 500 mm diameter at breast height (DBH) from within the project area of the Rockingham Industry Zone ('Strategic Environmental Assessment Area' identified by the pink highlighted area on the map at Attachment A). No trees are permitted to be cleared within the Conservation Area referred to in condition 10.
- (b) Must, within 12 months of the **commencement of construction**, commence a Tuart revegetation project as described below:
 - i. At least six Tuart trees must be planted for every Tuart tree greater than 500 mm DBH removed.
 - ii. The seedling trees must be planted at a rate of no greater than 250 stems per hectare in cleared or highly degraded areas where Tuart density has been greatly reduced.
 - iii. If after two years from the date of planting trees, a survival rate of 80% trees is not achieved, all planted trees that have not survived must be replaced within 12 months, and maintained with a survival rate of at least 80% for a minimum of a further three years.
 - iv. The person taking the action must fund and manage the Tuart revegetation project in consultation with the DEC until such a time as management responsibility has been formally transferred to a **recognised conservation organisation**.
 - v. The revegetation project must be at least partially undertaken in the Rockingham Lakes Regional Park. If there is insufficient land in the Rockingham Lakes Regional Park to undertake the required revegetation, the person taking the action, in consultation with DEC and the **Department**, must find alternate locations to undertake the revegetation within the Rockingham region.
- (c) Prepare and submit a **Black Cockatoo** Habitat Revegetation Plan (BCHRP) for the **Minister's** approval, that describes how approval condition 12 b) will be implemented. The plan must be prepared in consultation with the DEC. The person taking the action must not **commence construction** unless the **Minister** has approved the BCHRP.

The BCHRP must address the following matters:

- i. The location of revegetation areas;
- ii. Planting methodology, including soil preparation;
- iii. What flora species that will be planted;
- iv. A monitoring program (including how survival rates and success criteria will be determined);
- v. Construction of a temporary fence around the perimeter of the revegetation areas;
- vi. Management of weeds and feral animals in the revegetation area;
- vii. How the performance of the plan will be reported to the **Minister**; and
- viii. Who will be responsible for implementing all aspects of the plan.

If the **Minister** approves the BCHRP then the approved BCHRP must be implemented.

13. Water Management Strategy

To protect the threatened ecological community *Sedgelands in Holocene dune swales of the Southern Swan Coastal Plain* (TEC) and habitat for **Black Cockatoos** the person taking the action must prepare and submit a Water Management Strategy (WMS) for the **Minister's** approval. The person taking the action must not **commence construction** unless the **Minister** has approved the WMS. The WMS must be prepared in consultation with the DEC and the EPA.

The WMS must include:

- (a) arrangements for the long term monitoring of groundwater levels in the site;
- (b) a pre-construction baseline for surface water and groundwater quality data and a monitoring program for these parameters to maintain stormwater and groundwater quality and hydrology to pre-development levels;
- (c) an adaptive management plan, including contingency measures, to ensure **construction** does not affect groundwater levels beyond normal seasonal variation, with the aim of ensuring that the TEC persists and thrives in perpetuity;
- (d) maintaining or improving groundwater balance;
- (e) managing the salt wedge, Cockburn Sound interface;
- (f) preventing abstraction of shallow groundwater during **construction** or for future industry use; and
- (g) managing drainage into the conservation site.

If the **Minister** approves the WMS then the approved WMS must be implemented.

14. Offsets Management Plan

To protect the threatened ecological community *Sedgelands in Holocene dune swales of the Southern Swan Coastal Plain* (TEC) the person taking the action must prepare and submit an Offsets Management Plan (OMP) for the **Minister's** approval. The person taking the action must not **commence construction** unless the **Minister** has approved the OMP. The OMP must be prepared in consultation with DEC and the EPA. The OMP must address the rehabilitation of 9 hectares of threatened ecological community *Sedgelands in Holocene dune swales of the Southern Swan Coastal Plain* that requires active management in land managed by the DEC at other priority sites (as agreed by DEC and the **Department**) in the Rockingham region.

The OMP must include:

- (a) Within 12 months of clearing any areas of TEC, 1.5 ha for every 1 ha of TEC cleared must be re-established onsite and protected in perpetuity; and
- (b) A program for the monitoring of vegetation regeneration in the areas of TEC rehabilitated. After 2 years of monitoring, consult with DEC and undertake further rehabilitation in areas of the TEC where natural regeneration is not successful.

If the **Minister** approves the OMP then the approved OMP must be implemented.

The annual report referred to in condition 9 detailing performance against the plan must include the following information:

- i. Areas of the Rockingham Industry Zone cleared for development and revegetation;
- ii. Areas of the TEC cleared and areas of TEC recreated/rehabilitated and their protection arrangements; and
- iii. Areas of the TEC rehabilitated at other occurrences of the TEC in the Rockingham region.

Definitions

- a) Black Cockatoo.
The endangered Carnaby's Black Cockatoo (*Calyptorhynchus latirostris*).
- b) Department.
The Australian Government Department administering the *Environment Protection and Biodiversity Conservation Act 1999*.
- c) Minister.
The Minister administering the *Environment Protection and Biodiversity Conservation Act 1999* and includes a delegate of the Minister.
- d) Construction.
Includes any preparatory works required to be undertaken including clearing vegetation, the erection of any onsite temporary structures and the use of heavy duty equipment for the purpose of breaking the ground for buildings or infrastructure.
- e) Clearance of native vegetation.
The cutting down, felling, thinning, logging, removing, killing, destroying, poisoning, ringbarking, uprooting or burning of native vegetation.
- f) Commencement
The construction of any infrastructure, excluding fences and signage, associated with the proposed action, including preparatory works such as clearing vegetation to begin construction.
- g) Recognised conservation organisation
The WA Department of Environment and Conservation, or an alternative conservation organisation that has been approved in writing by the **Department**.

Office of the Environmental Protection Authority
Figure 1: SEA Boundary and Conservation Area Boundary



Legend Conservation Area SEA Boundary	 Projection: Geographic Coordinate System Datum: Australian National Standard 1984 Units: Meters	This map is produced for the Environmental Protection Authority, for inclusion into a report on the Robinsons Rd, and Park Project. This map depicts the boundaries of the Landscape proposed conservation area in relation to the and Threatened Ecological Community Area.
	Data Source Landscape Proposed Conservation Area (LCPA) - 2011 Threatened Ecological Community Area - 11/06/2011 Beach Coastal Plan (Boundary Condition) - 2008	
Analysis Not available	Prepared by Map created by: 21/01/2011 Map created by: Lorraine O'Connell Map Version:	Disclaimer: This map is provided as a general overview and does not constitute a warranty. The information contained on this map is to be considered for use only and is for general information purposes only. The user should not rely on this information for any specific purpose without seeking professional advice. © Crown Copyright. All rights reserved. Reproduction in whole or in part is prohibited without the prior written permission of the Environmental Protection Authority.

APPENDIX 4

Proposed Stage 1 Subdivision

**ROCKINGHAM INDUSTRY ZONE
SUBDIVISION PLAN
LOT 500 PATTERSON ROAD, ROCKINGHAM**

LEGEND:

- Area subject to application for subdivision
- Existing easements / lot dimension
- Proposed subdivision
- Proposed future subdivision
- Existing easement
- Contour (1m interval)



DEVELOPMENT SUMMARY:

SUMMARY OF EXISTING LOTS	
LOT	PLAN / DIAGRAM
500	PG1681
AREA (Ha)	
236.8100	

SUMMARY OF PROPOSED SUBDIVISION	
DEVELOPMENT	LOTS
DEVELOPMENT LOT (LOTS 1-10)	10
WATER CORP SCHOOL LOT FOR FUTURE ACQUISITION (LOT 11)	1
BALANCE LOT (LOT 500)	1
ROAD/ROAD WIDENING	
TOTAL	12
AREA (Ha)	
27.4532	
4.4553	
200.9444	
3.9751	
236.8100	

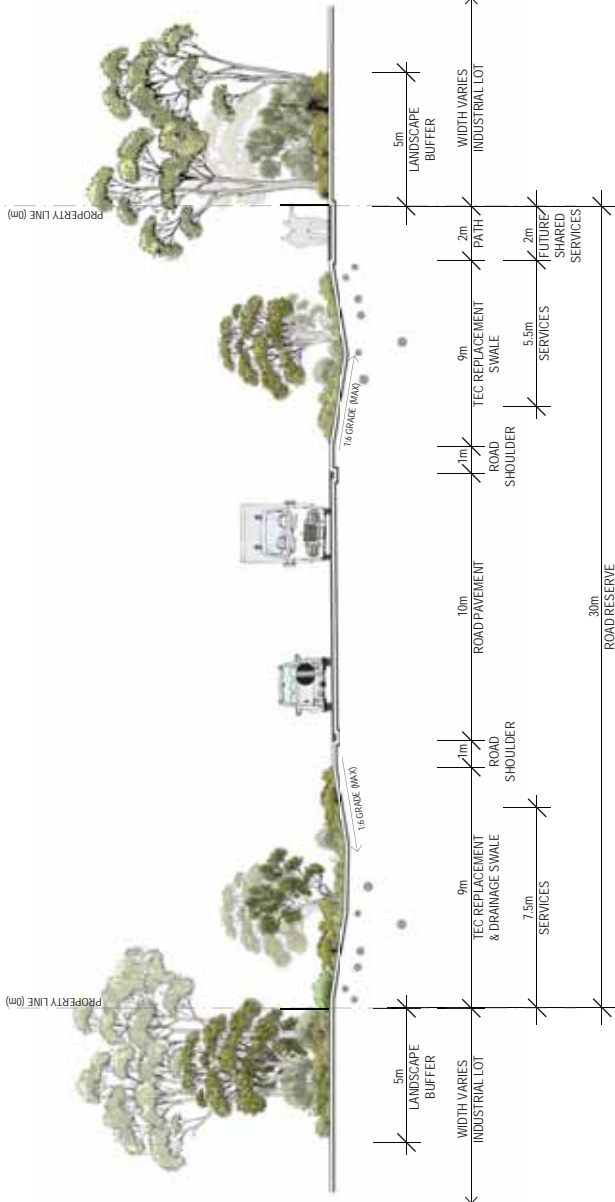
**AMENDED PLAN
07/08/2013**



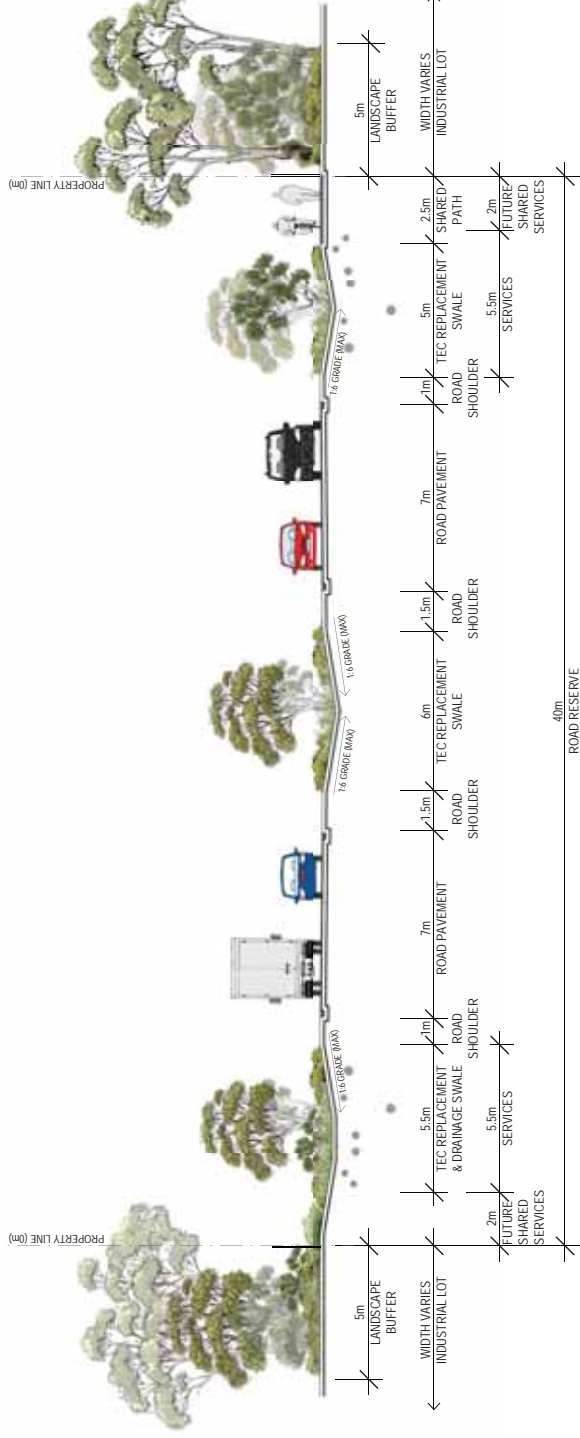
THIS PLAN IS THE PROPERTY OF THE PLANNING DEPARTMENT AND IS NOT TO BE REPRODUCED OR TRANSMITTED IN ANY FORM OR BY ANY MEANS, ELECTRONIC OR MECHANICAL, WITHOUT THE EXPRESS WRITTEN PERMISSION OF THE PLANNING DEPARTMENT.

APPENDIX 5

Typical Road Cross Sections

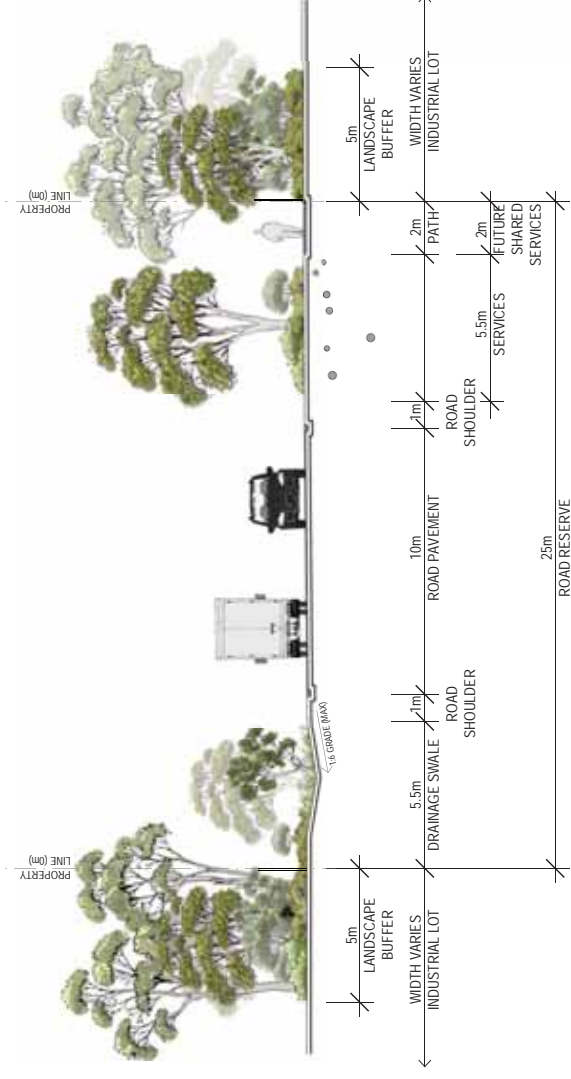


① LOCAL ROAD

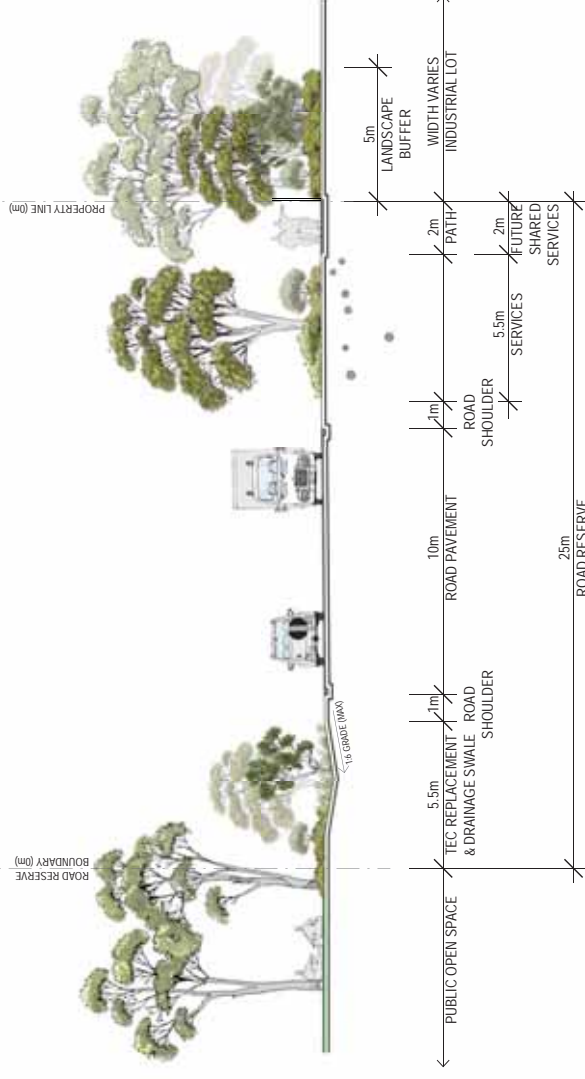


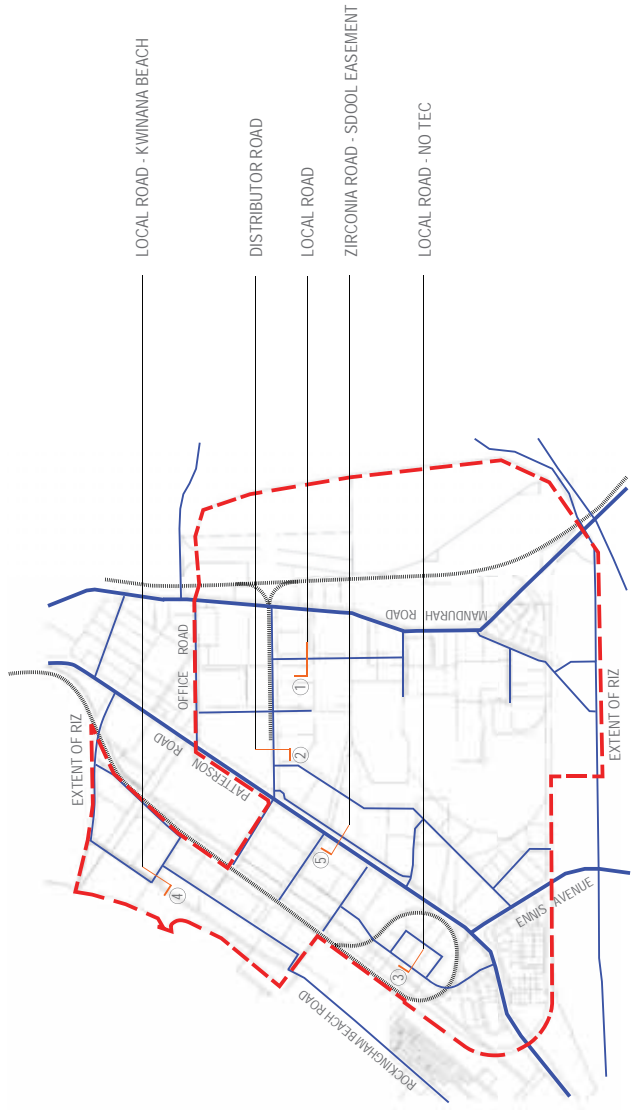
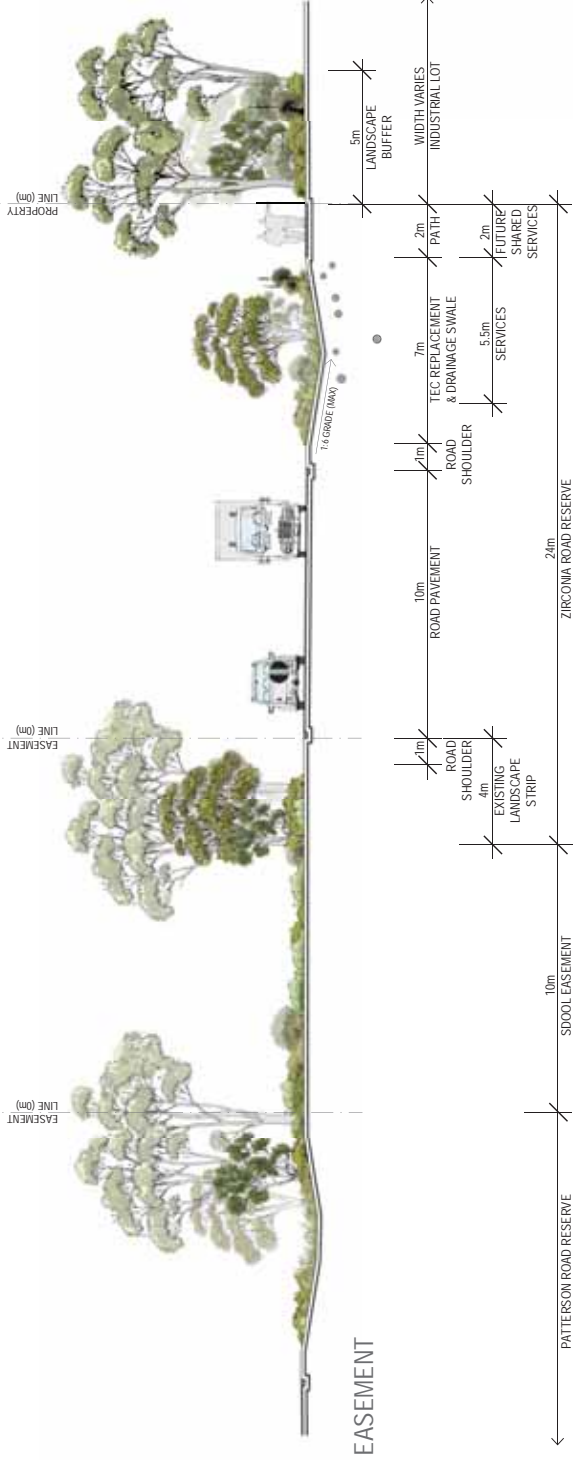
② DISTRIBUTOR ROAD

3 LOCAL ROAD - NO TEC



4 LOCAL ROAD - KWINANA BEACH ROAD





July 2012

