

Appendix E – Preliminary assessment of Banksia
Woodlands of the Swan Coastal Plain Threatened
Ecological Community and Black Cockatoo quality
foraging habitat on Part Lot 509 Kemerton, Proposed
Albemarle Kemerton Plant

Fionnuala Hannon
GHD
10 Victoria Street
Bunbury WA 6230 Australia

16 March 2018

Dear Fionnuala,

RE: Preliminary assessment of *Banksia* Woodlands of the Swan Coastal Plain Threatened ecological community and Black Cockatoo quality foraging habitat on Lot 509 Kemerton.

On 12 and 15 March 2018, a site assessment was carried out over remnant native vegetation on Lot 509 in Kemerton. The purpose of the assessment was to determine whether the site contains vegetation that meets the criteria for the Commonwealth-listed '*Banksia* Woodlands of the Swan Coastal Plain' Threatened ecological community¹ (TEC), and / or meets the criteria for quality Black Cockatoo foraging habitat², and may therefore have value as an environmental offset.

The site covers approximately 320 ha. All vegetation onsite (about 220 ha) was assessed on foot using ground traverses. Of the 220 ha assessed, approximately 84.26 ha meets the criteria for *Banksia* Woodlands of the Swan Coastal Plain TEC and Black Cockatoo quality foraging habitat and a further 33 ha constitutes quality foraging habitat but not the *Banksia* Woodlands of the Swan Coastal Plain TEC (**Figure 1**). Together these total 117.26 ha of quality foraging habitat.

Please don't hesitate to contact me if you have any queries about the preliminary assessment.

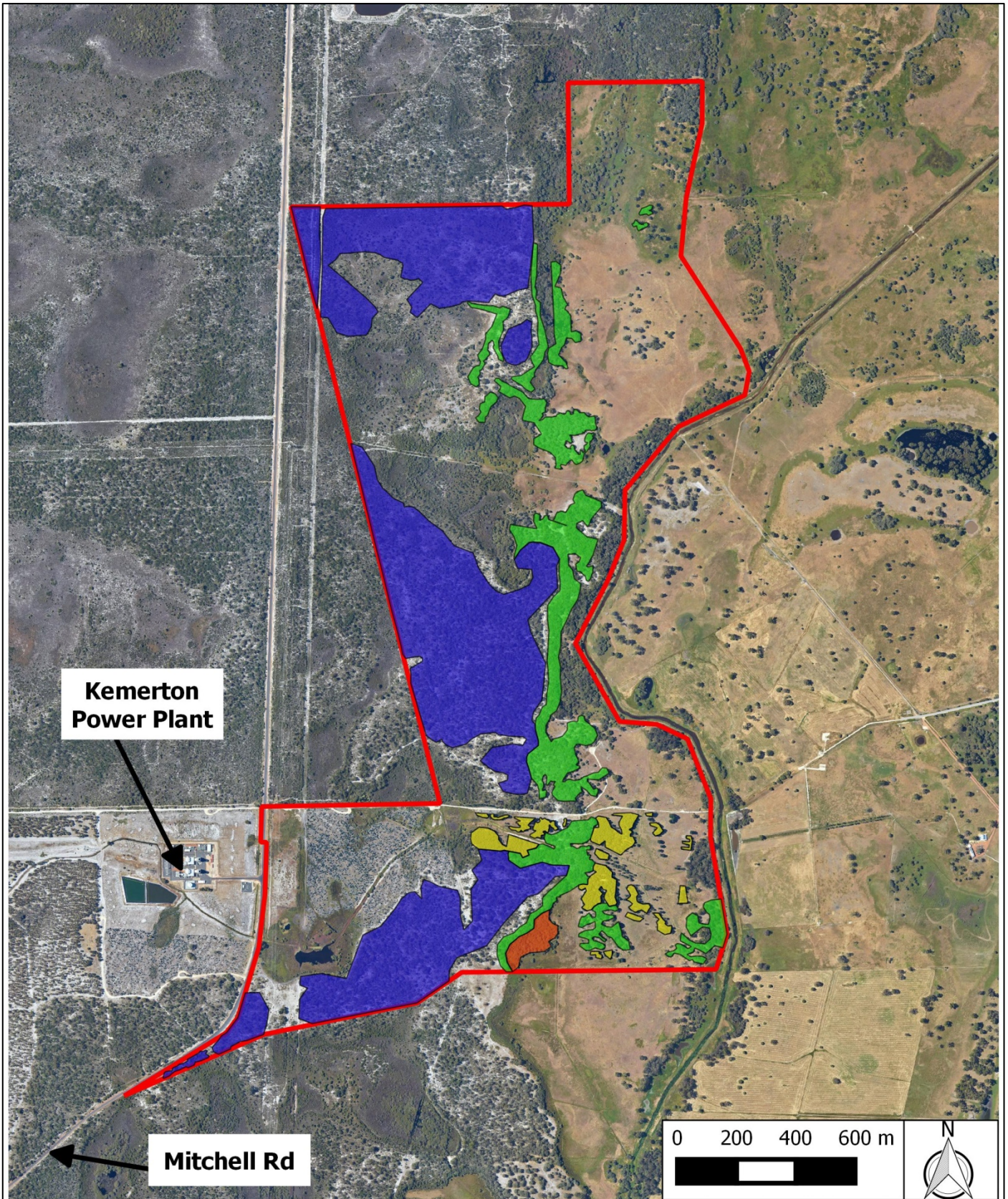
Yours sincerely,

A handwritten signature in black ink, appearing to read "Melanie Portman".

Melanie Portman
Director

¹ As defined in the Approved Conservation Advice (incorporating listing advice) for the *Banksia* Woodlands of the Swan Coastal Plain ecological community.

² As defined in DSEWPaC (2012). EPBC Act referral guidelines for three threatened black cockatoo species. Department of Sustainability, Environment, Water, Population and Communities, Canberra.



Legend

- Study Area
- Banksia Woodlands TEC
- Cocky Habitat_Marri Woodlands
- Cocky Habitat_Pines
- Wetland in Excellent condition
- Cadastre
- Road Network

Lot 509 Kemerton
 Potential Albemarle Offset Area
 Map drawn 150318 by M. Portman
 Aerial imagery provided by Landgate



Figure 1. Vegetation of Lot 509 Kemerton