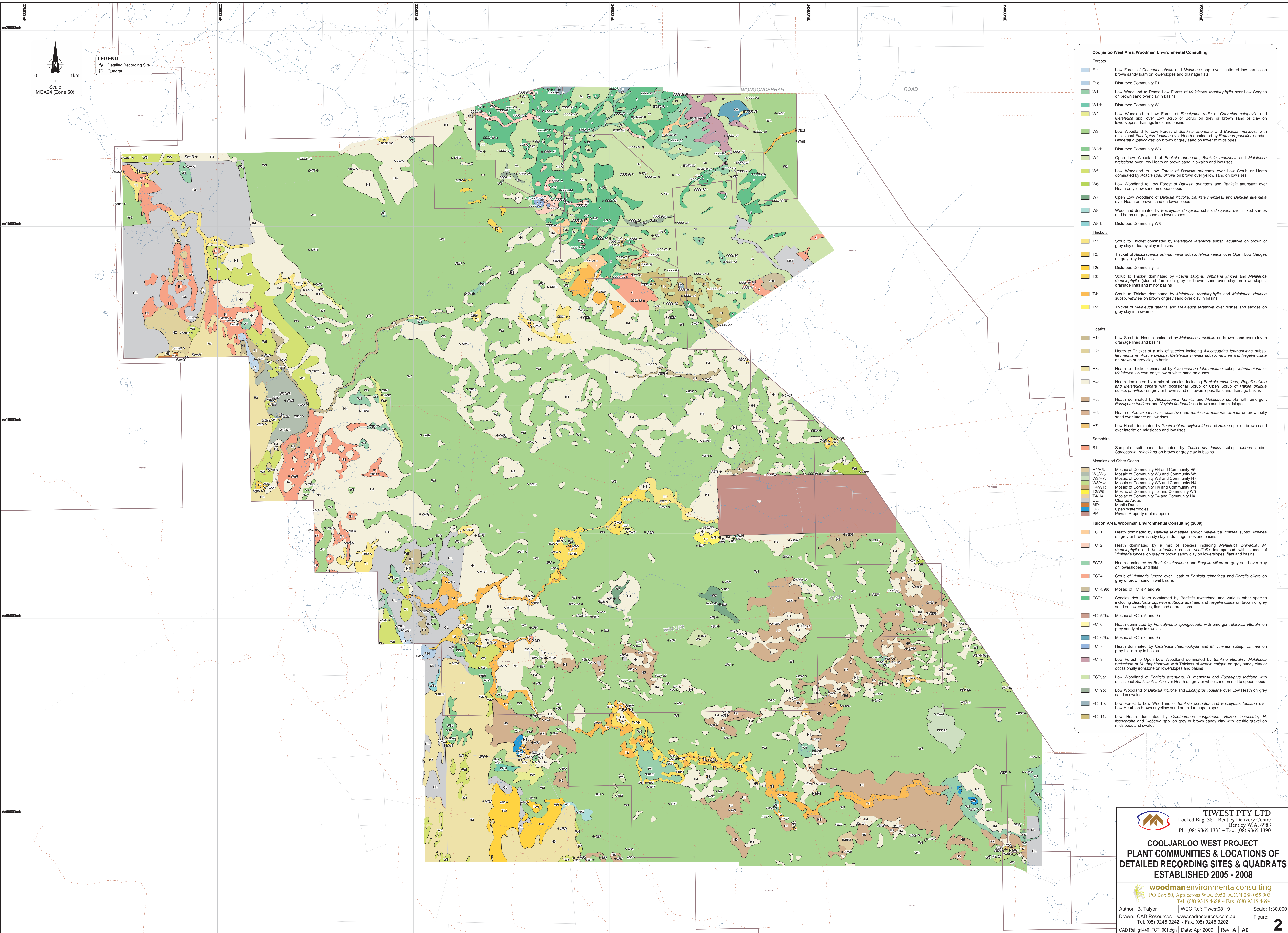


**TIWEST PTY LTD**  
 Locked Bag 381, Bentley Delivery Centre  
 Bentley W.A. 6983  
 Ph: (08) 9365 1333 - Fax: (08) 9365 1390

**COOLJARLOO WEST PROJECT  
 LOCATION**

**woodmanenvironmentalconsulting**  
 PO Box 50, Applecross W.A. 6953, A.C.N.088 055 903  
 Tel: (08) 9315 4688 - Fax: (08) 9315 4699

Author: B. Taylor	WEC Ref: Tiwest08-19	Scale: 1:100,000
Drawn: CAD Resources - www.cadresources.com.au	Tel: (08) 9246 3242 - Fax: (08) 9246 3202	Figure: <b>1</b>
CAD Ref: g1440_FCT_L001.dgn		Date: Apr 2009   Rev: A   A3



**LEGEND**  
 Detailed Recording Site  
 Quadrat

Scale  
 MGA94 (Zone 50)  
 0 1km

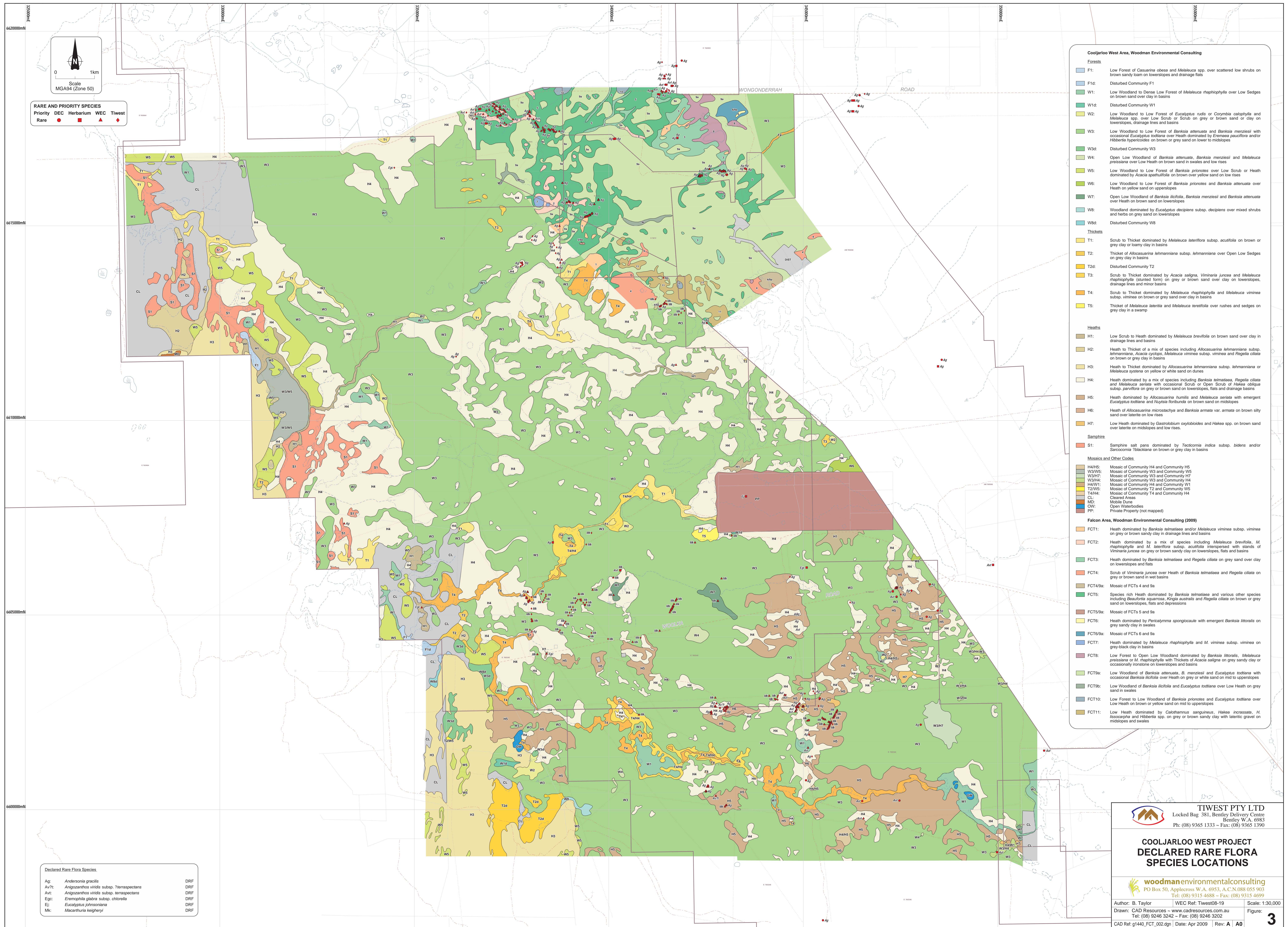
- Cooljarloo West Area, Woodman Environmental Consulting**
- Forest:**
- F1: Low Forest of *Casuarina obesa* and *Melaleuca* spp. over scattered low shrubs on brown sandy loam on lower slopes and drainage flats
  - F1d: Disturbed Community F1
  - W1: Low Woodland to Dense Low Forest of *Melaleuca raphiophylla* over Low Sedges on brown sand over clay in basins
  - W1d: Disturbed Community W1
  - W2: Low Woodland to Low Forest of *Eucalyptus rudis* or *Corymbia cataphylla* and *Melaleuca* spp. over Low Scrub or Scrub on grey or brown sand or clay on lower slopes, drainage lines and basins
  - W3: Low Woodland to Low Forest of *Banksia attenuata* and *Banksia menziesii* with occasional *Eucalyptus todtiana* over Heath dominated by *Eremaea pauciflora* and/or *Hibbertia hypericoides* on brown or grey sand on lower to midslopes
  - W3d: Disturbed Community W3
  - W4: Open Low Woodland of *Banksia attenuata*, *Banksia menziesii* and *Melaleuca preissiana* over Low Heath on brown sand in swales and low rises
  - W5: Low Woodland to Low Forest of *Banksia prionotes* over Low Scrub or Heath dominated by *Acacia spathulifolia* on brown or yellow sand on low rises
  - W6: Low Woodland to Low Forest of *Banksia prionotes* and *Banksia attenuata* over Heath on yellow sand on upper slopes
  - W7: Open Low Woodland of *Banksia ilicifolia*, *Banksia menziesii* and *Banksia attenuata* over Heath on brown sand on upper slopes
  - W8: Woodland dominated by *Eucalyptus decipiens* subsp. *decipiens* over mixed shrubs and herbs on grey sand on lower slopes
  - W8d: Disturbed Community W8
- Thickets:**
- T1: Scrub to Thicket dominated by *Melaleuca lateriflora* subsp. *acutifolia* on brown or grey clay or loamy clay in basins
  - T2: Thicket of *Allocasuarina lehmanniana* subsp. *lehmanniana* over Open Low Sedges on grey clay in basins
  - T2d: Disturbed Community T2
  - T3: Scrub to Thicket dominated by *Acacia saligna*, *Viminaria juncea* and *Melaleuca raphiophylla* (stunted form) on grey or brown sand over clay on lower slopes, drainage lines and minor basins
  - T4: Scrub to Thicket dominated by *Melaleuca raphiophylla* and *Melaleuca viminea* subsp. *viminea* on brown or grey sand over clay in basins
  - T5: Thicket of *Melaleuca lateriflora* and *Melaleuca teretifolia* over rushes and sedges on grey clay in a swamp
- Heaths:**
- H1: Low Scrub to Heath dominated by *Melaleuca brevifolia* on brown sand over clay in drainage lines and basins
  - H2: Heath to Thicket of a mix of species including *Allocasuarina lehmanniana* subsp. *lehmanniana*, *Acacia cyclops*, *Melaleuca viminea* subsp. *viminea* and *Regelia ciliata* on brown or grey clay in basins
  - H3: Heath to Thicket dominated by *Allocasuarina lehmanniana* subsp. *lehmanniana* or *Melaleuca systena* on yellow or white sand on dunes
  - H4: Heath dominated by a mix of species including *Banksia telmateia*, *Regelia ciliata* and *Melaleuca serotina* with occasional Scrub or Open Scrub of *Hakea obliqua* subsp. *parviflora* on grey or brown sand on lower slopes, flats and drainage basins
  - H5: Heath dominated by *Allocasuarina humilis* and *Melaleuca serotina* with emergent *Eucalyptus todtiana* and *Nyssa floribunda* on brown sand on midslopes
  - H6: Heath of *Allocasuarina microstachya* and *Banksia armata* var. *armata* on brown silty sand over laterite on low rises
  - H7: Low Heath dominated by *Gastrolobium oxyloboides* and *Hakea* spp. on brown sand over laterite on midslopes and low rises.
- Samphire:**
- S1: Samphire salt pans dominated by *Tecticornia indica* subsp. *bidens* and/or *Sarcocornia ?blackiana* on brown or grey clay in basins
- Mosaics and Other Codes**
- H4/H5: Mosaic of Community H4 and Community H5
  - W3/W5: Mosaic of Community W3 and Community W5
  - W3/H7: Mosaic of Community W3 and Community H7
  - W3/H4: Mosaic of Community W3 and Community H4
  - H4/W1: Mosaic of Community H4 and Community W1
  - T2/W5: Mosaic of Community T2 and Community W5
  - T4/H4: Mosaic of Community T4 and Community H4
  - CL: Cleared Areas
  - MD: Mobile Dune
  - OW: Open Waterbodies
  - PP: Private Property (not mapped)
- Falcon Area, Woodman Environmental Consulting (2009)**
- FCT1: Heath dominated by *Banksia telmateia* and/or *Melaleuca viminea* subsp. *viminea* on grey or brown sandy clay in drainage lines and basins
  - FCT2: Heath dominated by a mix of species including *Melaleuca brevifolia*, *M. raphiophylla* and *M. lateriflora* subsp. *acutifolia* interspersed with stands of *Viminaria juncea* on grey or brown sandy clay on lower slopes, flats and basins
  - FCT3: Heath dominated by *Banksia telmateia* and *Regelia ciliata* on grey sand over clay on lower slopes and flats
  - FCT4: Scrub of *Viminaria juncea* over Heath of *Banksia telmateia* and *Regelia ciliata* on grey or brown sand in wet basins
  - FCT4/9a: Mosaic of FCTs 4 and 9a
  - FCT5: Species rich Heath dominated by *Banksia telmateia* and various other species including *Baeulifera squarrosa*, *Kingia australis* and *Regelia ciliata* on brown or grey sand on lower slopes, flats and depressions
  - FCT5/9a: Mosaic of FCTs 5 and 9a
  - FCT6: Heath dominated by *Pentaclyma spongicaule* with emergent *Banksia littoralis* on grey sandy clay in swales
  - FCT6/9a: Mosaic of FCTs 6 and 9a
  - FCT7: Heath dominated by *Melaleuca raphiophylla* and *M. viminea* subsp. *viminea* on grey-black clay in basins
  - FCT8: Low Forest to Open Low Woodland dominated by *Banksia littoralis*, *Melaleuca preissiana* or *M. raphiophylla* with Thickets of *Acacia saligna* on grey sandy clay or occasionally ironstone on lower slopes and basins
  - FCT9a: Low Woodland of *Banksia attenuata*, *B. menziesii* and *Eucalyptus todtiana* with occasional *Banksia ilicifolia* over Heath on grey or white sand on mid to upper slopes
  - FCT9b: Low Woodland of *Banksia ilicifolia* and *Eucalyptus todtiana* over Low Heath on grey sand in swales
  - FCT10: Low Forest to Low Woodland of *Banksia prionotes* and *Eucalyptus todtiana* over Low Heath on brown or yellow sand on mid to upper slopes
  - FCT11: Low Heath dominated by *Calothamnus sanguineus*, *Hakea incrassata*, *H. ilicifolia* and *Hibbertia* spp. on grey or brown sandy clay with laterite gravel on midslopes and swales

**TWIST PTY LTD**  
 Locked Bag 381, Bentley Delivery Centre  
 Bentley W.A. 6983  
 Ph: (08) 9365 1333 – Fax: (08) 9365 1390

**COOLJARLOO WEST PROJECT**  
**PLANT COMMUNITIES & LOCATIONS OF**  
**DETAILED RECORDING SITES & QUADRATS**  
**ESTABLISHED 2005 - 2008**

**woodmanenvironmentalconsulting**  
 PO Box 50, Applecross W.A. 6953, A.C.N.088 055 903  
 Tel: (08) 9315 4688 – Fax: (08) 9315 4699

Author: B. Taylor      WEC Ref: Twist08-19      Scale: 1:30,000  
 Drawn: CAD Resources – www.cadresources.com.au      Figure:  
 Tel: (08) 9246 3242 – Fax: (08) 9246 3202  
 CAD Ref: g1440\_FCT\_001.dgn    Date: Apr 2009    Rev: A | A0



**RARE AND PRIORITY SPECIES**  
 Priority DEC Herbarium WEC Threat  
 Rare ● ● ● ● ●

- Cooljarloo West Area, Woodman Environmental Consulting**
- Forests**
- F1: Low Forest of *Casuarina obesa* and *Melaleuca* spp. over scattered low shrubs on brown sandy loam on lower slopes and drainage flats
  - F1d: Disturbed Community F1
  - W1: Low Woodland to Dense Low Forest of *Melaleuca raphiophylla* over Low Sedges on brown sand over clay in basins
  - W1d: Disturbed Community W1
  - W2: Low Woodland to Low Forest of *Eucalyptus rudis* or *Corymbia cataphylla* and *Melaleuca* spp. over Low Scrub or Scrub on grey or brown sand or clay on lower slopes, drainage lines and basins
  - W3: Low Woodland to Low Forest of *Banksia attenuata* and *Banksia menziesii* with occasional *Eucalyptus todtiana* over Heath dominated by *Eremaea pauciflora* and/or *Hibbertia hypericoides* on brown or grey sand on lower to midslopes
  - W3d: Disturbed Community W3
  - W4: Open Low Woodland of *Banksia attenuata*, *Banksia menziesii* and *Melaleuca preissiana* over Low Heath on brown sand in swales and low rises
  - W5: Low Woodland to Low Forest of *Banksia prionotes* over Low Scrub or Heath dominated by *Acacia spathulifolia* on brown over yellow sand on low rises
  - W6: Low Woodland to Low Forest of *Banksia prionotes* and *Banksia attenuata* over Heath on yellow sand on upper slopes
  - W7: Open Low Woodland of *Banksia ilicifolia*, *Banksia menziesii* and *Banksia attenuata* over Heath on brown sand on lower slopes
  - W8: Woodland dominated by *Eucalyptus decipiens* subsp. *decipiens* over mixed shrubs and herbs on grey sand on lower slopes
  - W8d: Disturbed Community W8
- Thickets**
- T1: Scrub to Thicket dominated by *Melaleuca lateriflora* subsp. *acutifolia* on brown or grey clay or loamy clay in basins
  - T2: Thicket of *Allocasuarina lehmanniana* subsp. *lehmanniana* over Open Low Sedges on grey clay in basins
  - T2d: Disturbed Community T2
  - T3: Scrub to Thicket dominated by *Acacia saligna*, *Viminaria juncea* and *Melaleuca raphiophylla* (stunted form) on grey or brown sand over clay on lower slopes, drainage lines and minor basins
  - T4: Scrub to Thicket dominated by *Melaleuca raphiophylla* and *Melaleuca viminea* subsp. *viminea* on brown or grey sand over clay in basins
  - T5: Thicket of *Melaleuca lateriflora* and *Melaleuca teretifolia* over rushes and sedges on grey clay in a swamp
- Heaths**
- H1: Low Scrub to Heath dominated by *Melaleuca brevifolia* on brown sand over clay in drainage lines and basins
  - H2: Heath to Thicket of a mix of species including *Allocasuarina lehmanniana* subsp. *lehmanniana*, *Acacia cyclops*, *Melaleuca viminea* subsp. *viminea* and *Regelia ciliata* on brown or grey clay in basins
  - H3: Heath to Thicket dominated by *Allocasuarina lehmanniana* subsp. *lehmanniana* or *Melaleuca systena* on yellow or white sand on dunes
  - H4: Heath dominated by a mix of species including *Banksia telmateia*, *Regelia ciliata* and *Melaleuca serotina* with occasional Scrub or Open Scrub of *Hakea obliqua* subsp. *parviflora* on grey or brown sand on lower slopes, flats and drainage basins
  - H5: Heath dominated by *Allocasuarina humilis* and *Melaleuca serotina* with emergent *Eucalyptus todtiana* and *Nyssia floribunda* on brown sand on midslopes
  - H6: Heath of *Allocasuarina microstachya* and *Banksia armata* var. *armata* on brown silty sand over laterite on low rises
  - H7: Low Heath dominated by *Gastrolobium oxyloboides* and *Hakea* spp. on brown sand over laterite on midslopes and low rises.
- Samphire**
- S1: Samphire salt pans dominated by *Tecticornia indica* subsp. *indica* and/or *Sarcocornia ?blackiana* on brown or grey clay in basins
- Mosaics and Other Codes**
- H4H5: Mosaic of Community H4 and Community H5
  - W3W5: Mosaic of Community W3 and Community W5
  - W3H7: Mosaic of Community W3 and Community H7
  - W3H4: Mosaic of Community W3 and Community H4
  - H4W1: Mosaic of Community H4 and Community W1
  - T2W5: Mosaic of Community T2 and Community W5
  - T4H4: Mosaic of Community T4 and Community H4
  - CL: Cleared Areas
  - MD: Mobile Dune
  - OW: Open Waterbodies
  - PP: Private Property (not mapped)
- Falcon Area, Woodman Environmental Consulting (2009)**
- FCT1: Heath dominated by *Banksia telmateia* and/or *Melaleuca viminea* subsp. *viminea* on grey or brown sandy clay in drainage lines and basins
  - FCT2: Heath dominated by a mix of species including *Melaleuca brevifolia*, *M. raphiophylla* and *M. lateriflora* subsp. *acutifolia* interspersed with stands of *Viminaria juncea* on grey or brown sandy clay on lower slopes, flats and basins
  - FCT3: Heath dominated by *Banksia telmateia* and *Regelia ciliata* on grey sand over clay on lower slopes and flats
  - FCT4: Scrub of *Viminaria juncea* over Heath of *Banksia telmateia* and *Regelia ciliata* on grey or brown sand in wet basins
  - FCT4/9a: Mosaic of FCTs 4 and 9a
  - FCT5: Species rich Heath dominated by *Banksia telmateia* and various other species including *Baeulifera squarrosa*, *Kingia australis* and *Regelia ciliata* on brown or grey sand on lower slopes, flats and depressions
  - FCT5/9a: Mosaic of FCTs 5 and 9a
  - FCT6: Heath dominated by *Pericalymma spongicaule* with emergent *Banksia littoralis* on grey sandy clay in swales
  - FCT6/9a: Mosaic of FCTs 6 and 9a
  - FCT7: Heath dominated by *Melaleuca raphiophylla* and *M. viminea* subsp. *viminea* on grey-black clay in basins
  - FCT8: Low Forest to Open Low Woodland dominated by *Banksia littoralis*, *Melaleuca preissiana* or *M. raphiophylla* with Thickets of *Acacia saligna* on grey sandy clay or occasionally ironstone on lower slopes and basins
  - FCT9a: Low Woodland of *Banksia attenuata*, *B. menziesii* and *Eucalyptus todtiana* with occasional *Banksia ilicifolia* over Heath on grey or white sand on mid to upper slopes
  - FCT9b: Low Woodland of *Banksia ilicifolia* and *Eucalyptus todtiana* over Low Heath on grey sand in swales
  - FCT10: Low Forest to Low Woodland of *Banksia prionotes* and *Eucalyptus todtiana* over Low Heath on brown or yellow sand on mid to upper slopes
  - FCT11: Low Heath dominated by *Calothamnus sanguineus*, *Hakea incrassata*, *H. lasiocarpa* and *Hibbertia* spp. on grey or brown sandy clay with laterite gravel on midslopes and swales

**Declared Rare Flora Species**

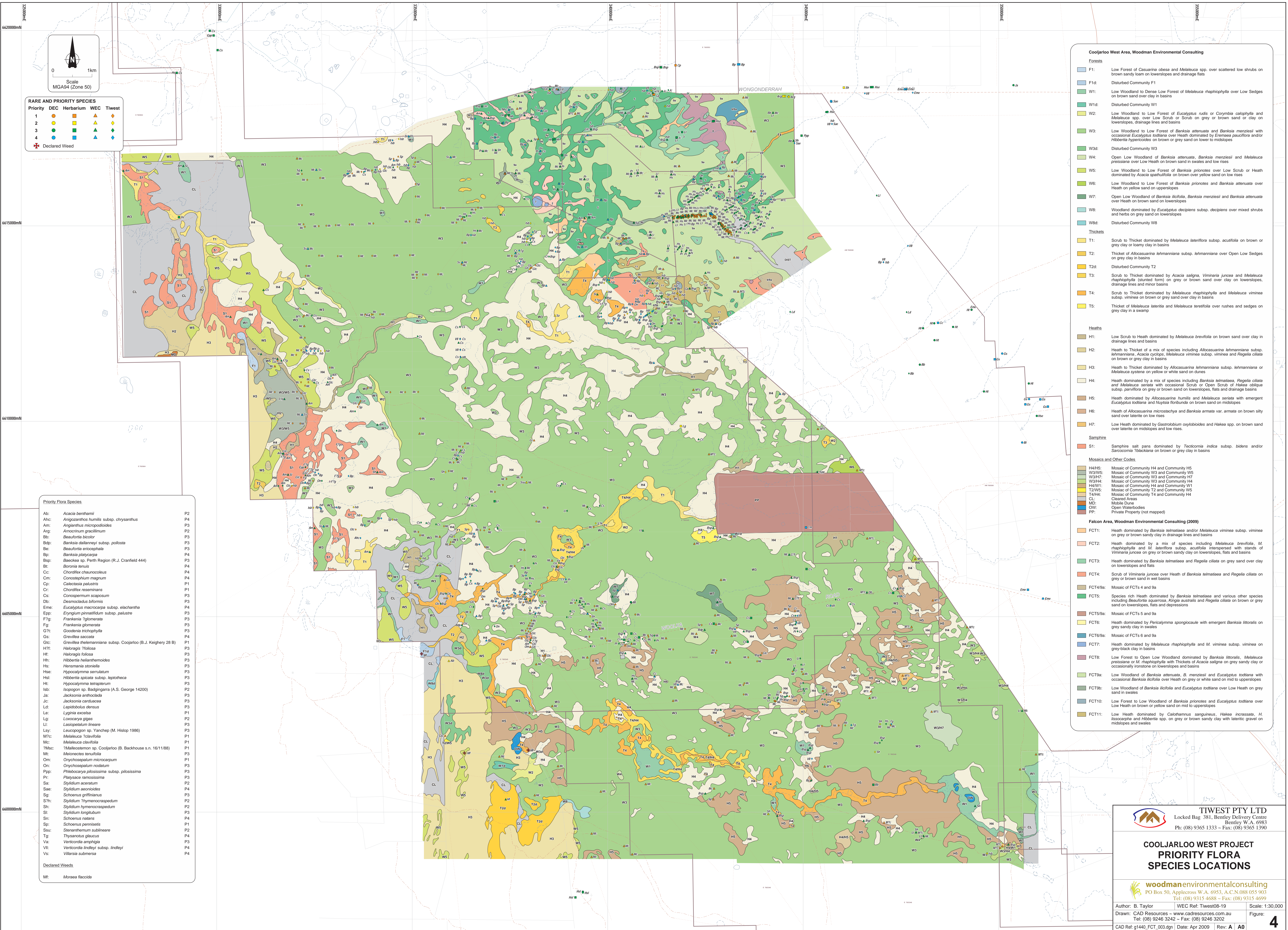
Ag:	<i>Andersonia gracilis</i>	DRF
Av:	<i>Anigozanthos viridis</i> subsp. <i>?terraspectans</i>	DRF
Av:	<i>Anigozanthos viridis</i> subsp. <i>terraspectans</i>	DRF
Eg:	<i>Eremophila glabra</i> subsp. <i>chlorella</i>	DRF
Ej:	<i>Eucalyptus johnsoniana</i>	DRF
Mk:	<i>Macarthuria keigheryi</i>	DRF

**TWIST PTY LTD**  
 Locked Bag 381, Bentley Delivery Centre  
 Bentley W.A. 6983  
 Ph: (08) 9365 1333 – Fax: (08) 9365 1390

**COOLJARLOO WEST PROJECT  
 DECLARED RARE FLORA  
 SPECIES LOCATIONS**

**woodmanenvironmentalconsulting**  
 PO Box 50, Applecross W.A. 6953, A.C.N.088 055 903  
 Tel: (08) 9315 4688 – Fax: (08) 9315 4699

Author: B. Taylor WEC Ref: Twist08-19 Scale: 1:30,000  
 Drawn: CAD Resources – www.cadresources.com.au  
 Tel: (08) 9246 3242 – Fax: (08) 9246 3202 Figure:  
 CAD Ref: g1440\_FCT\_002.dgn Date: Apr 2009 Rev: A | A0



- ### Cooljarloo West Area, Woodman Environmental Consulting
- Forests**
- F1: Low Forest of *Casuarina obesa* and *Melaleuca* spp. over scattered low shrubs on brown sandy loam on lower slopes and drainage flats
  - F1d: Disturbed Community F1
  - W1: Low Woodland to Dense Low Forest of *Melaleuca raphiophylla* over Low Sedges on brown sand over clay in basins
  - W1d: Disturbed Community W1
  - W2: Low Woodland to Low Forest of *Eucalyptus rudis* or *Corymbia cataphylla* and *Melaleuca* spp. over Low Scrub or Scrub on grey or brown sand or clay on lower slopes, drainage lines and basins
  - W3: Low Woodland to Low Forest of *Banksia attenuata* and *Banksia menziesii* with occasional *Eucalyptus todtiana* over Heath dominated by *Eremaea pauciflora* and/or *Hibbertia hypericoides* on brown or grey sand on lower slopes
  - W3d: Disturbed Community W3
  - W4: Open Low Woodland of *Banksia attenuata*, *Banksia menziesii* and *Melaleuca preissiana* over Low Heath on brown sand in swales and low rises
  - W5: Low Woodland to Low Forest of *Banksia prionotes* over Low Scrub or Heath dominated by *Acacia spathulifolia* on brown or yellow sand on low rises
  - W6: Low Woodland to Low Forest of *Banksia prionotes* and *Banksia attenuata* over Heath on yellow sand on upper slopes
  - W7: Open Low Woodland of *Banksia ilicifolia*, *Banksia menziesii* and *Banksia attenuata* over Heath on brown sand on lower slopes
  - W8: Woodland dominated by *Eucalyptus decipiens* subsp. *decipiens* over mixed shrubs and herbs on grey sand on lower slopes
  - W8d: Disturbed Community W8
- Thickets**
- T1: Scrub to Thicket dominated by *Melaleuca lateriflora* subsp. *acutifolia* on brown or grey clay or loamy clay in basins
  - T2: Thicket of *Allocasuarina lehmanniana* subsp. *lehmanniana* over Open Low Sedges on grey clay in basins
  - T2d: Disturbed Community T2
  - T3: Scrub to Thicket dominated by *Melaleuca raphiophylla* (stunted form) on grey or brown sand over clay on lower slopes, drainage lines and minor basins
  - T4: Scrub to Thicket dominated by *Melaleuca raphiophylla* and *Melaleuca viminea* subsp. *viminea* on brown or grey sand over clay in basins
  - T5: Thicket of *Melaleuca lateriflora* and *Melaleuca teretifolia* over rushes and sedges on grey clay in a swamp
- Heaths**
- H1: Low Scrub to Heath dominated by *Melaleuca brevifolia* on brown sand over clay in drainage lines and basins
  - H2: Heath to Thicket of a mix of species including *Allocasuarina lehmanniana* subsp. *lehmanniana*, *Acacia cyclops*, *Melaleuca viminea* subsp. *viminea* and *Regelia ciliata* on brown or grey clay in basins
  - H3: Heath to Thicket dominated by *Allocasuarina lehmanniana* subsp. *lehmanniana* or *Melaleuca systena* on yellow or white sand on dunes
  - H4: Heath dominated by a mix of species including *Banksia telmateia*, *Regelia ciliata* and *Melaleuca serotina* with occasional Scrub or Open Scrub of *Hakea obliqua* subsp. *parviflora* on grey or brown sand on lower slopes, flats and drainage basins
  - H5: Heath dominated by *Allocasuarina microstachya* and *Banksia serotina* with emergent *Eucalyptus todtiana* and *Nyssa floribunda* on brown sand on midslopes
  - H6: Heath of *Allocasuarina microstachya* and *Banksia armata* var. *armata* on brown silty sand over laterite on low rises
  - H7: Low Heath dominated by *Gastrolobium oxyloboides* and *Hakea* spp. on brown silty sand over laterite on midslopes and low rises.
- Sapphire**
- S1: Sapphire salt pans dominated by *Tecticornia indica* subsp. *indica* and/or *Sarcocornia ?blackiana* on brown or grey clay in basins
- Mosaics and Other Codes**
- H4H5: Mosaic of Community H4 and Community H5
  - W3W5: Mosaic of Community W3 and Community W5
  - W3H7: Mosaic of Community W3 and Community H7
  - W3H4: Mosaic of Community W3 and Community H4
  - H4W1: Mosaic of Community H4 and Community W1
  - T2W5: Mosaic of Community T2 and Community W5
  - T4H4: Mosaic of Community T4 and Community H4
  - CL: Cleared Areas
  - MD: Mobile Dune
  - OW: Open Waterbodies
  - PP: Private Property (not mapped)
- Falcon Area, Woodman Environmental Consulting (2009)**
- FCT1: Heath dominated by *Banksia telmateia* and/or *Melaleuca viminea* subsp. *viminea* on grey or brown sandy clay in drainage lines and basins
  - FCT2: Heath dominated by a mix of species including *Melaleuca brevifolia*, *M. raphiophylla* and *M. lateriflora* subsp. *acutifolia* interspersed with stands of *Viminaria juncea* on grey or brown sandy clay on lower slopes, flats and basins
  - FCT3: Heath dominated by *Banksia telmateia* and *Regelia ciliata* on grey sand over clay on lower slopes and flats
  - FCT4: Scrub of *Viminaria juncea* over Heath of *Banksia telmateia* and *Regelia ciliata* on grey or brown sand in wet basins
  - FCT4a: Mosaic of FCTs 4 and 9a
  - FCT5: Species rich Heath dominated by *Banksia telmateia* and various other species including *Baeulifera squarrosa*, *Kingia australis* and *Regelia ciliata* on brown or grey sand on lower slopes, flats and depressions
  - FCT5a: Mosaic of FCTs 5 and 9a
  - FCT6: Heath dominated by *Pentaclymna spongicaule* with emergent *Banksia littoralis* on grey sandy clay in swales
  - FCT6a: Mosaic of FCTs 6 and 9a
  - FCT7: Heath dominated by *Melaleuca raphiophylla* and *M. viminea* subsp. *viminea* on grey-black clay in basins
  - FCT8: Low Forest to Open Low Woodland dominated by *Banksia littoralis*, *Melaleuca preissiana* or *M. raphiophylla* with Thickets of *Acacia saligna* on grey sandy clay or occasionally ironstone on lower slopes and basins
  - FCT9a: Low Woodland of *Banksia attenuata*, *B. menziesii* and *Eucalyptus todtiana* with occasional *Banksia ilicifolia* over Heath on grey or white sand on mid to upper slopes
  - FCT9b: Low Woodland of *Banksia ilicifolia* and *Eucalyptus todtiana* over Low Heath on grey sand in swales
  - FCT10: Low Forest to Low Woodland of *Banksia prionotes* and *Eucalyptus todtiana* over Low Heath on brown or yellow sand on mid to upper slopes
  - FCT11: Low Heath dominated by *Calothamnus sanguineus*, *Hakea incrassata*, *H. isocarpa* and *Hibbertia* spp. on grey or brown sandy clay with laterite gravel on midslopes and swales

- ### RARE AND PRIORITY SPECIES
- | Priority | DEC | Herbarium | WEC | Tiwest |
|----------|-----|-----------|-----|--------|
| 1        | ●   | ■         | ▲   | ◆      |
| 2        | ○   | □         | △   | ◇      |
| 3        | ●   | ■         | ▲   | ◆      |
| 4        | ○   | □         | △   | ◇      |
- ✦ Declared Weed

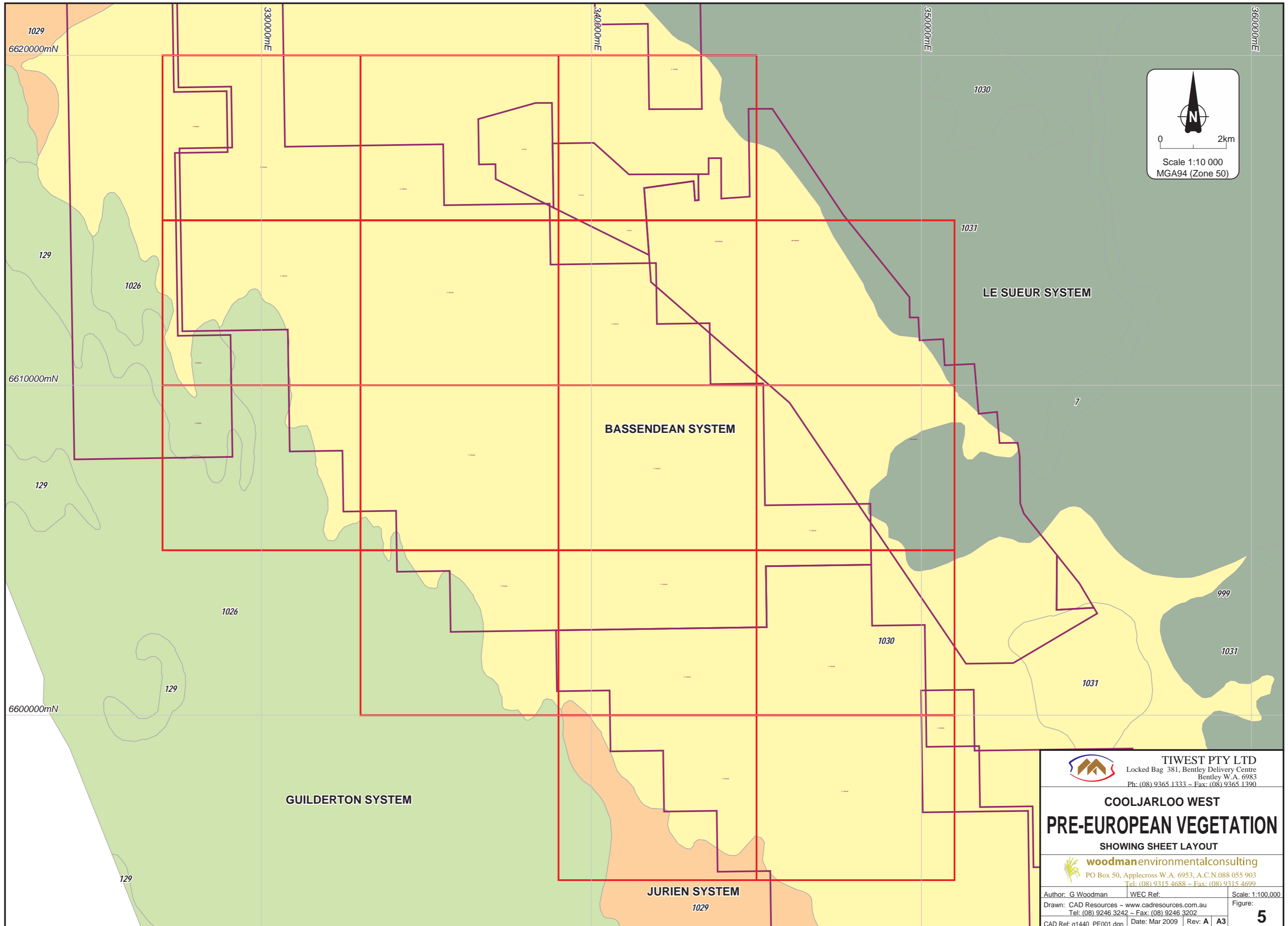
- ### Priority Flora Species
- |      |  |    |
|------|--|----|
| Ab:  | <i>Acacia benthamii</i>  | P2 |
| Ah:  | <i>Angoanthos humilis</i> subsp. <i>chrysanthus</i>                        | P4 |
| Am:  | <i>Angianthus micropodioides</i>   | P3 |
| Ag:  | <i>Amorinum gracilimum</i>   | P2 |
| Bb:  | <i>Beaufortia bicolor</i>  | P3 |
| Bdp: | <i>Banksia dallmannii</i> subsp. <i>poliflora</i>                          | P3 |
| Be:  | <i>Beaufortia entocarpa</i>  | P3 |
| Pp:  | <i>Banksia platycarpa</i>  | P4 |
| Bsp: | <i>Baeckea</i> sp. North Region (R.J. Cranfield 444)                       | P3 |
| Bt:  | <i>Boronia tenuis</i>  | P4 |
| Cc:  | <i>Chondrillix chaunocoleus</i>  | P4 |
| Cm:  | <i>Conostephium magnum</i>   | P4 |
| Cp:  | <i>Calceolaria palustris</i>   | P1 |
| Cr:  | <i>Chondrillix resamianus</i>  | P4 |
| Cs:  | <i>Conospermum scoparium</i>   | P3 |
| Db:  | <i>Desmodium biflorum</i>  | P3 |
| Em:  | <i>Eucalyptus macrocarpa</i> subsp. <i>elachantha</i>                      | P4 |
| Epp: | <i>Elyngium pinetatum</i> subsp. <i>palustre</i>                           | P3 |
| Ff:  | <i>Frankenia ?glomerata</i>  | P3 |
| Fg:  | <i>Frankenia glomerata</i>   | P3 |
| G7:  | <i>Goodenia trichophylla</i>   | P3 |
| Gs:  | <i>Grevillea saccata</i>   | P4 |
| Gtc: | <i>Grevillea thelmaniana</i> subsp. <i>Cooljarloo</i> (B.J. Keighery 28 B) | P1 |
| H7:  | <i>Haloragis ?foliosa</i>  | P1 |
| Hf:  | <i>Haloragis foliosa</i>   | P3 |
| Hh:  | <i>Hibbertia helianthemoides</i>   | P3 |
| Hs:  | <i>Hemimania strobilata</i>  | P3 |
| Hse: | <i>Hypocalymma serotinum</i>   | P3 |
| Hst: | <i>Hibbertia spicata</i> subsp. <i>leptotheca</i>                          | P3 |
| Ht:  | <i>Hypocalymma tetrapetrum</i>   | P3 |
| Ib:  | <i>Isopogon</i> sp. <i>Badgingarra</i> (A.S. George 14200)                 | P2 |
| Jc:  | <i>Jacksonia anthocidea</i>  | P3 |
| Jd:  | <i>Jacksonia caribaea</i>  | P3 |
| Ld:  | <i>Lepidobolus densus</i>  | P3 |
| Le:  | <i>Lyginia excoleta</i>  | P1 |
| Lg:  | <i>Lorocarya gigas</i>   | P2 |
| Ll:  | <i>Lasiopetalum lineare</i>  | P3 |
| Ls:  | <i>Leucopogon</i> sp. <i>Yanchep</i> (M. Hislop 1986)                      | P3 |
| M7c: | <i>Melaleuca ?clavifolia</i>   | P1 |
| Mc:  | <i>Melaleuca clavifolia</i>  | P1 |
| Mec: | <i>Melaleuca</i> sp. <i>Cooljarloo</i> (B. Backhouse s.n. 10/11/88)        | P1 |
| Mt:  | <i>Melonectes tenuifolia</i>   | P3 |
| Om:  | <i>Onychosepalum microcarpum</i>   | P1 |
| On:  | <i>Onychosepalum nodatum</i>   | P1 |
| Ppp: | <i>Phlebocarya pilosissima</i> subsp. <i>pilosissima</i>                   | P3 |
| Pr:  | <i>Phyllocladus teretifolia</i>  | P2 |
| Sa:  | <i>Stylidium aceratum</i>  | P3 |
| Sae: | <i>Stylidium aconitoides</i>   | P4 |
| Sg:  | <i>Schoenus griffithianus</i>  | P3 |
| S7h: | <i>Stylidium thymenocarpoides</i>  | P2 |
| Sh:  | <i>Stylidium thymenocarpoides</i>  | P2 |
| Sl:  | <i>Stylidium longitubum</i>  | P3 |
| Sn:  | <i>Schoenus natus</i>  | P1 |
| Sp:  | <i>Schoenus pennisetis</i>   | P4 |
| S7u: | <i>Scleranthemum subulnare</i>   | P2 |
| Su:  | <i>Scleranthemum subulnare</i>   | P2 |
| Tg:  | <i>Thysanotus glaucus</i>  | P4 |
| Va:  | <i>Verticordia amphibia</i>  | P3 |
| Vl:  | <i>Verticordia lindleyi</i> subsp. <i>lindleyi</i>                         | P4 |
| Vs:  | <i>Villarsia submersa</i>  | P4 |
- Declared Weeds**
- Mt: *Moraea flaccida*

**TIWEST PTY LTD**  
 Locked Bag 381, Bentley Delivery Centre  
 Bentley W.A. 6983  
 Ph: (08) 9365 1333 - Fax: (08) 9365 1390

**COOLJARLOO WEST PROJECT  
 PRIORITY FLORA  
 SPECIES LOCATIONS**

**woodmanenvironmentalconsulting**  
 PO Box 50, Applecross W.A. 6953, A.C.N.088 055 903  
 Tel: (08) 9315 4688 - Fax: (08) 9315 4699

Author: B. Taylor WEC Ref: Tiwest08-19 Scale: 1:30,000  
 Drawn: CAD Resources - www.cadresources.com.au  
 Tel: (08) 9246 3242 - Fax: (08) 9246 3202  
 CAD Ref: g1440\_FCT\_003.dgn Date: Apr 2009 Rev: A | A0



**TIWEST PTY LTD**  
 Locked Bag 381, Bentley Delivery Centre  
 Bentley W.A. 6983  
 Ph: (08) 9365 1333 ~ Fax: (08) 9365 1390

**COOLJARLOO WEST**  
**PRE-EUROPEAN VEGETATION**  
 SHOWING SHEET LAYOUT

**woodman**environmentalconsulting  
 PO Box 50, Applecross W.A. 6953, A.C.N.088 055 903  
 Tel: (08) 9315 4688 ~ Fax: (08) 9315 4699

Author: G Woodman	WEC Ref:	Scale: 1:100,000
Drawn: CAD Resources - www.cadresources.com.au	Tel: (08) 9246 3242 ~ Fax: (08) 9246 3202	Figure: <b>5</b>
CAD Ref: g1440_PEO1.dgn	Date: Mar 2009	Rev: A <b>A3</b>