
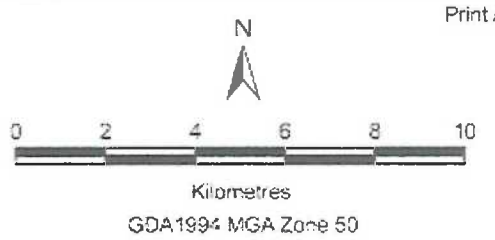
	Onslow Tenement Project	Figure 1: Regional Location of the Ashburton River Sand and Shingle Project	
	Drawn: C Newland Date: 12 January 2010		
Map Name: Figure 1 Ashburton River Regional NatMap A3.mxd		Print A3	
Base Map: NapMap Raster Geoscience Australia 2005			

FIGURE 1: REGIONAL LOCATION OF THE ASHBURTON RIVER SAND AND SHINGLE PROJECT

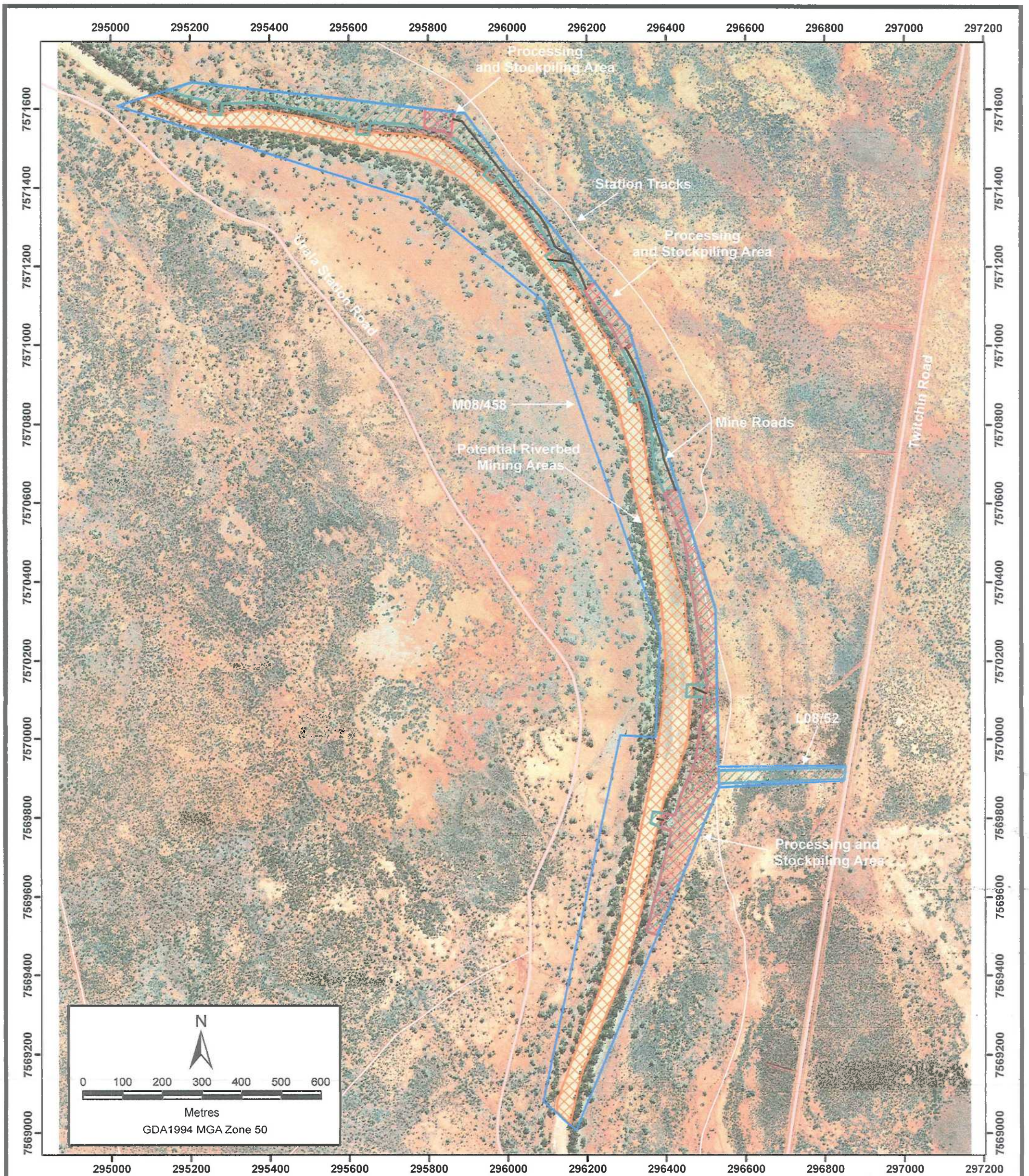


Figure 1: Site Plan M08/458 and L08/51 Ashburton River Sand and Shingle Project

Print A3



Onslow Tenement Project

Drawn: R Irwin

Date: 04/ 01/ 2013

Map Name: Figure 1 Ashburton River Site Plan M08-458 A3.mxd

Base Map: ONSLOW_1954_AUG_2007_MOSAIC.ECW

- ORL Tenements
- NVCP Area (CPS 4493/2)
- Processing and Stockpiling Areas
- Potential Riverbed Mining Areas
- Mine Roads (M08/458)
- Public Roads
- Station Tracks

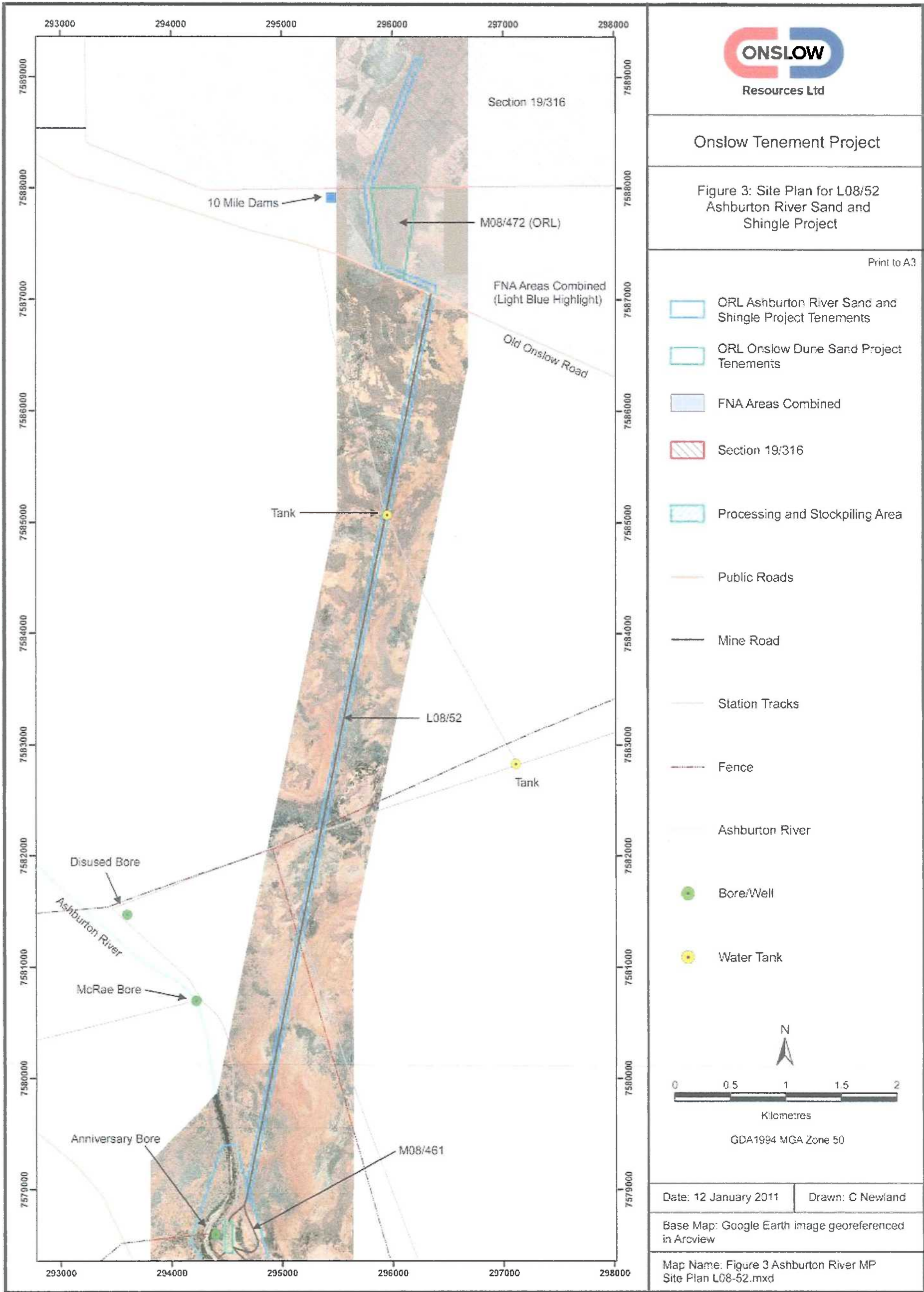


FIGURE 3: SITE PLAN FOR L08/52 ASHBURTON RIVER SAND AND SHINGLE PROJECT

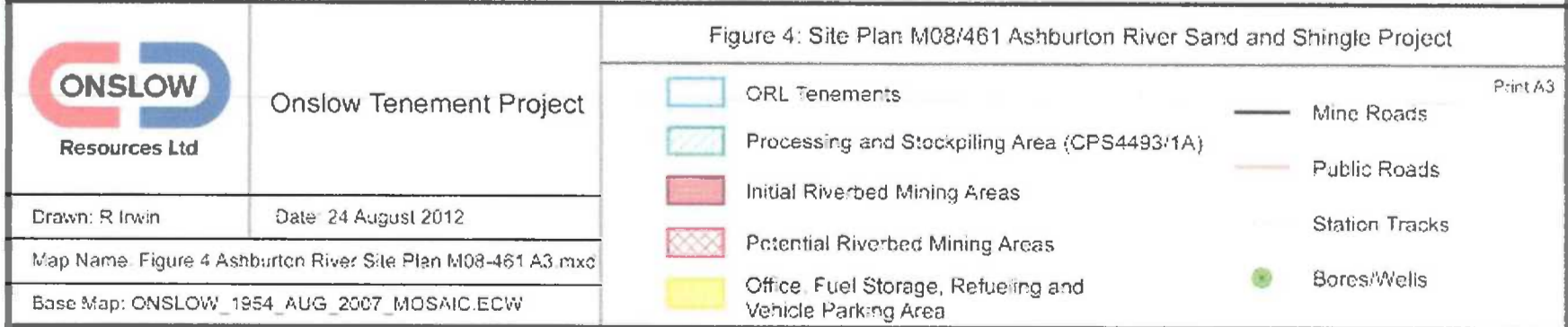
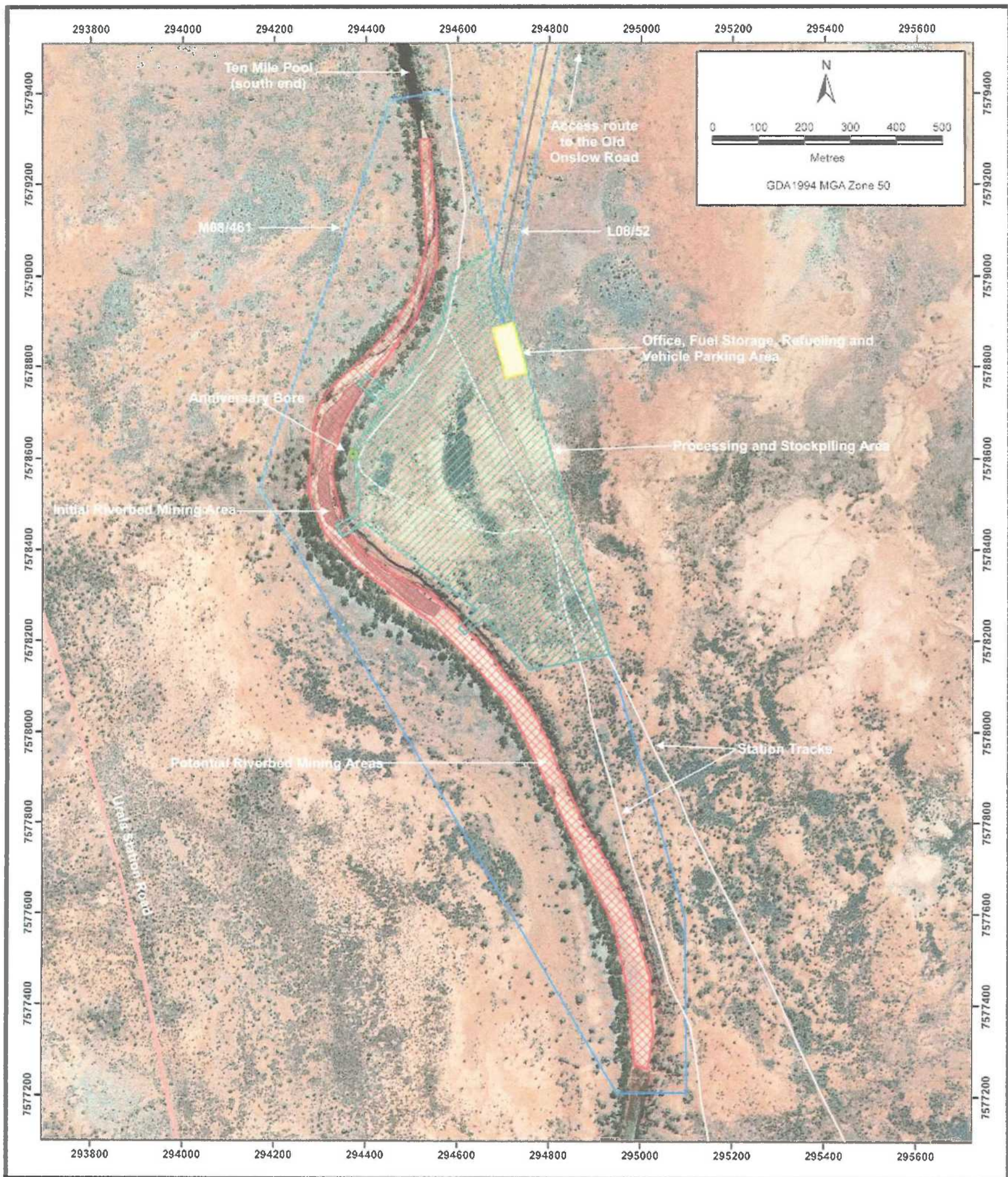


FIGURE 4: SITE PLAN FOR M08/461 ASHBURTON RIVER SAND AND SHINGLE PROJECT