

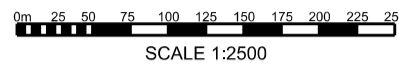


# Appendix I – Noise Contours

## **Dual Carriageway**

**LEGEND:**

-  PROPOSED LAND REQUIREMENTS
-  PROPOSED NEW HIGHWAY ALIGNMENT






SCALE 1:2500

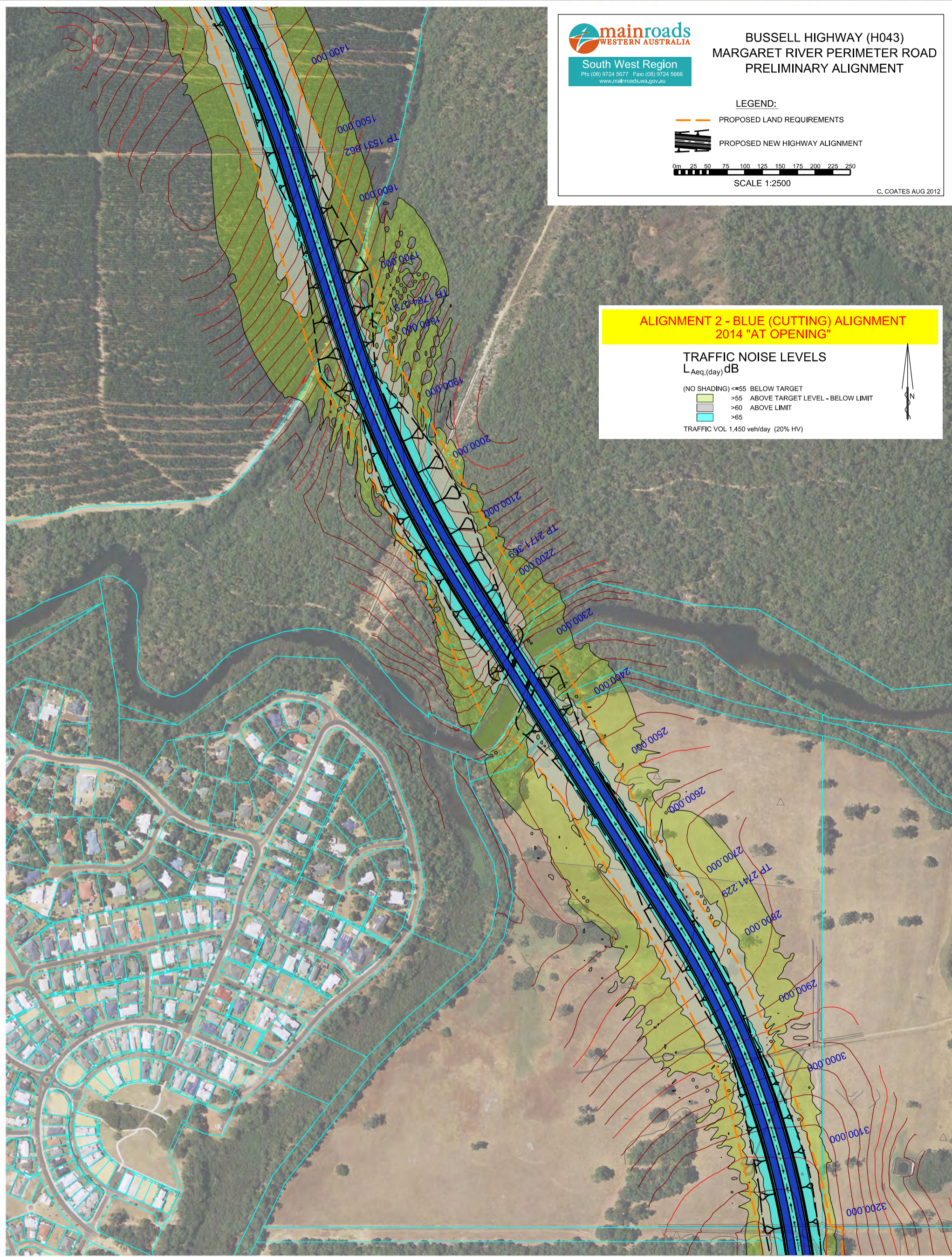
C. COATES AUG 2012

**ALIGNMENT 2 - BLUE (CUTTING) ALIGNMENT  
2014 "AT OPENING"**



**TRAFFIC NOISE LEVELS**  
L<sub>Aeq,(day)</sub> dB

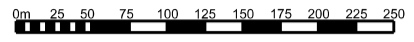
- (NO SHADING) <=55 BELOW TARGET
-  >55 ABOVE TARGET LEVEL - BELOW LIMIT
-  >60 ABOVE LIMIT
-  >65

TRAFFIC VOL 1,450 veh/day (20% HV)



**LEGEND:**

-  PROPOSED LAND REQUIREMENTS
-  PROPOSED NEW HIGHWAY ALIGNMENT





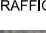
SCALE 1:2500

C. COATES AUG 2012

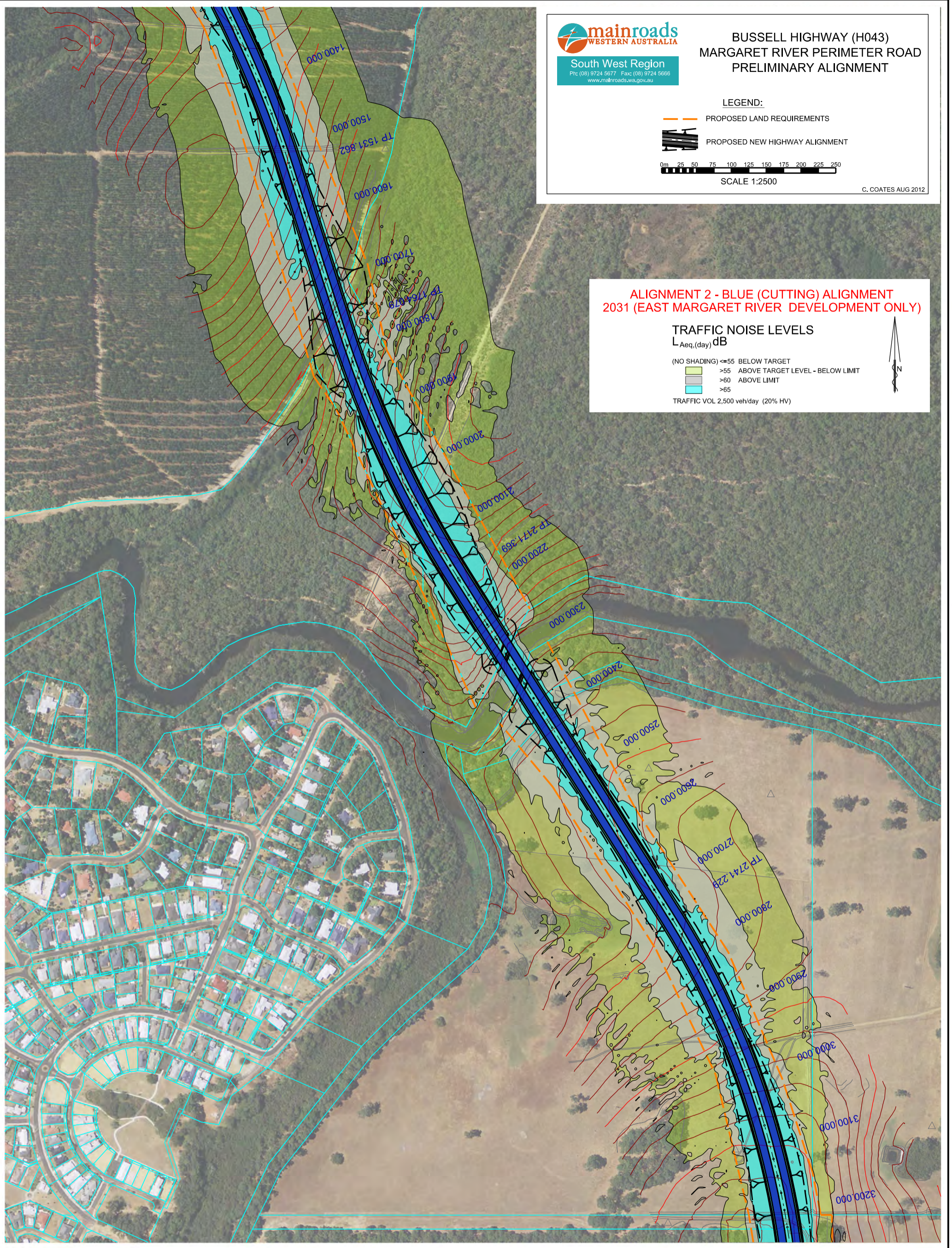
**ALIGNMENT 2 - BLUE (CUTTING) ALIGNMENT  
2031 (EAST MARGARET RIVER DEVELOPMENT ONLY)**

**TRAFFIC NOISE LEVELS**

$L_{Aeq,(day)}$  dB



- (NO SHADING)  $\leq 55$  BELOW TARGET
-   $> 55$  ABOVE TARGET LEVEL - BELOW LIMIT
-   $> 60$  ABOVE LIMIT
-   $> 65$

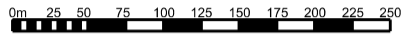
TRAFFIC VOL 2,500 veh/day (20% HV)



**BUSSELL HIGHWAY (H043)  
MARGARET RIVER PERIMETER ROAD  
PRELIMINARY ALIGNMENT**

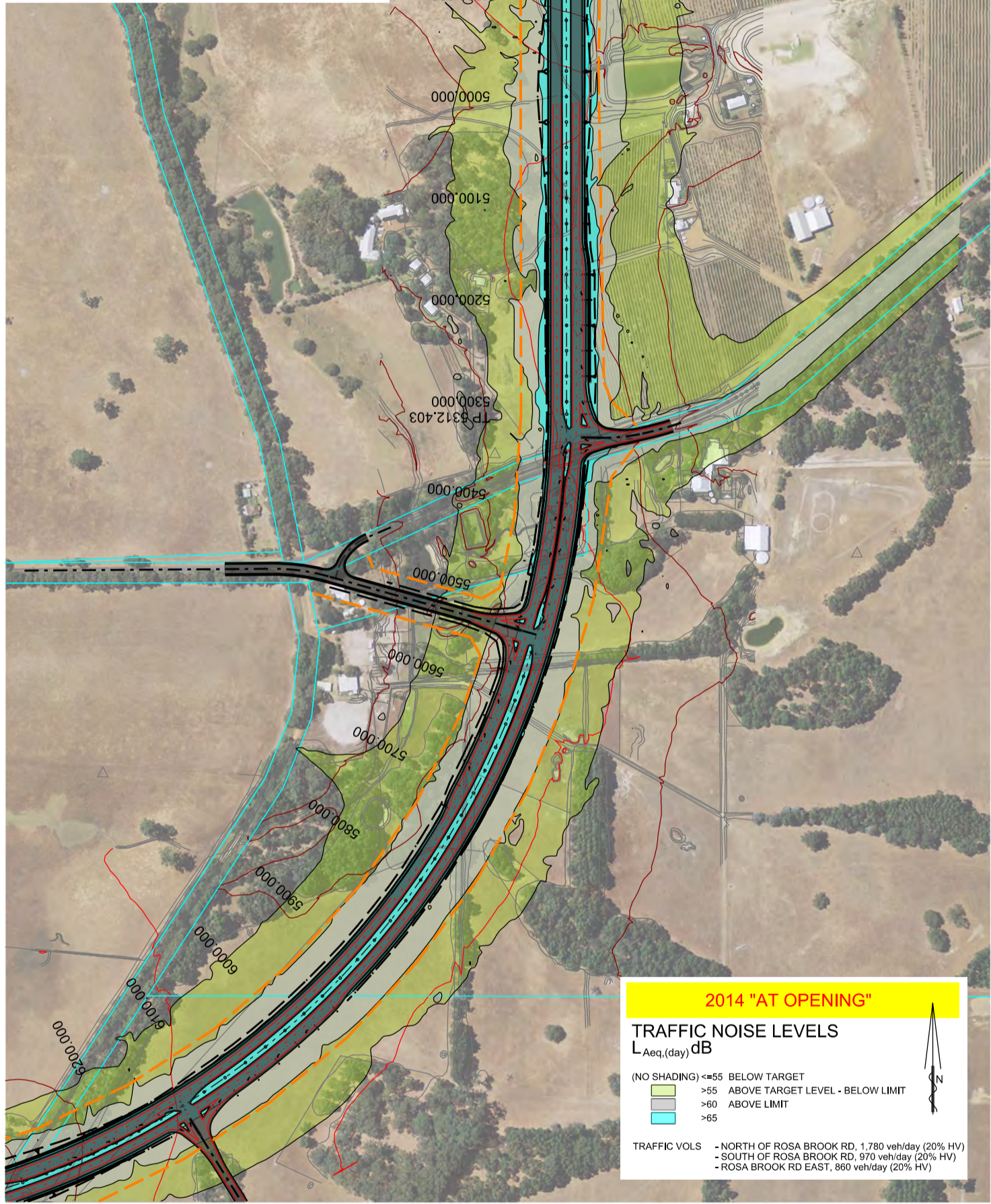
**LEGEND:**

-  PROPOSED LAND REQUIREMENTS
-  PROPOSED NEW HIGHWAY ALIGNMENT





SCALE 1:2500

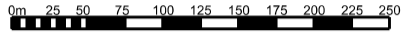
C. COATES AUG 2012



**BUSSELL HIGHWAY (H043)  
MARGARET RIVER PERIMETER ROAD  
PRELIMINARY ALIGNMENT**

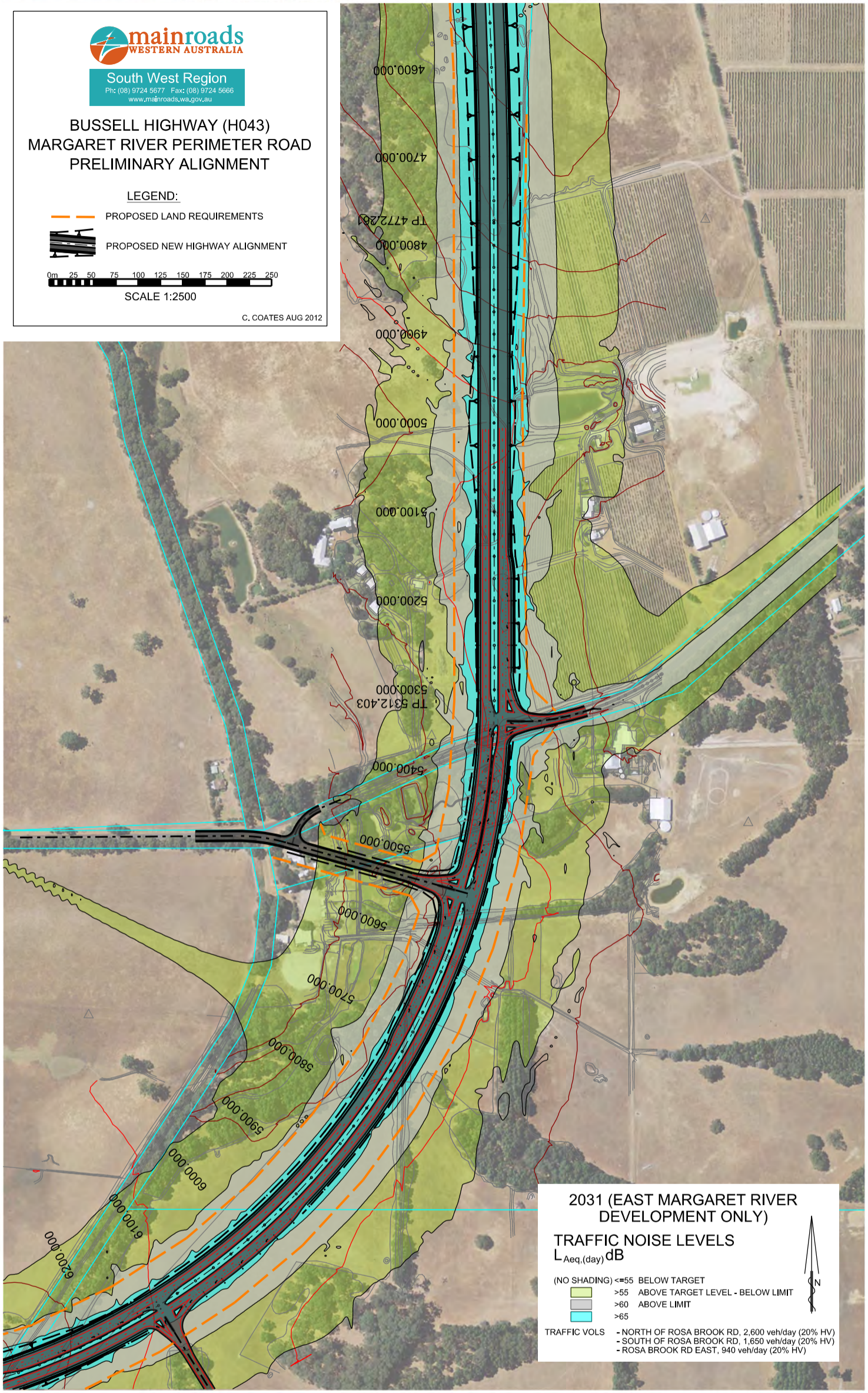
**LEGEND:**

-  PROPOSED LAND REQUIREMENTS
-  PROPOSED NEW HIGHWAY ALIGNMENT





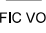
SCALE 1:2500

C. COATES AUG 2012



**2031 (EAST MARGARET RIVER DEVELOPMENT ONLY)**

**TRAFFIC NOISE LEVELS**  
 $L_{Aeq,(day)}$  dB



- (NO SHADING)  $\leq 55$  BELOW TARGET
-   $> 55$  ABOVE TARGET LEVEL - BELOW LIMIT
-   $> 60$  ABOVE LIMIT
-   $> 65$

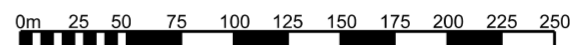
TRAFFIC VOLS - NORTH OF ROSA BROOK RD, 2,600 veh/day (20% HV)  
- SOUTH OF ROSA BROOK RD, 1,650 veh/day (20% HV)  
- ROSA BROOK RD EAST, 940 veh/day (20% HV)



# Single Carriageway

**LEGEND:**

-  PROPOSED LAND REQUIREMENTS
-  PROPOSED NEW HIGHWAY ALIGNMENT






SCALE 1:2500

C. COATES AUG 2012

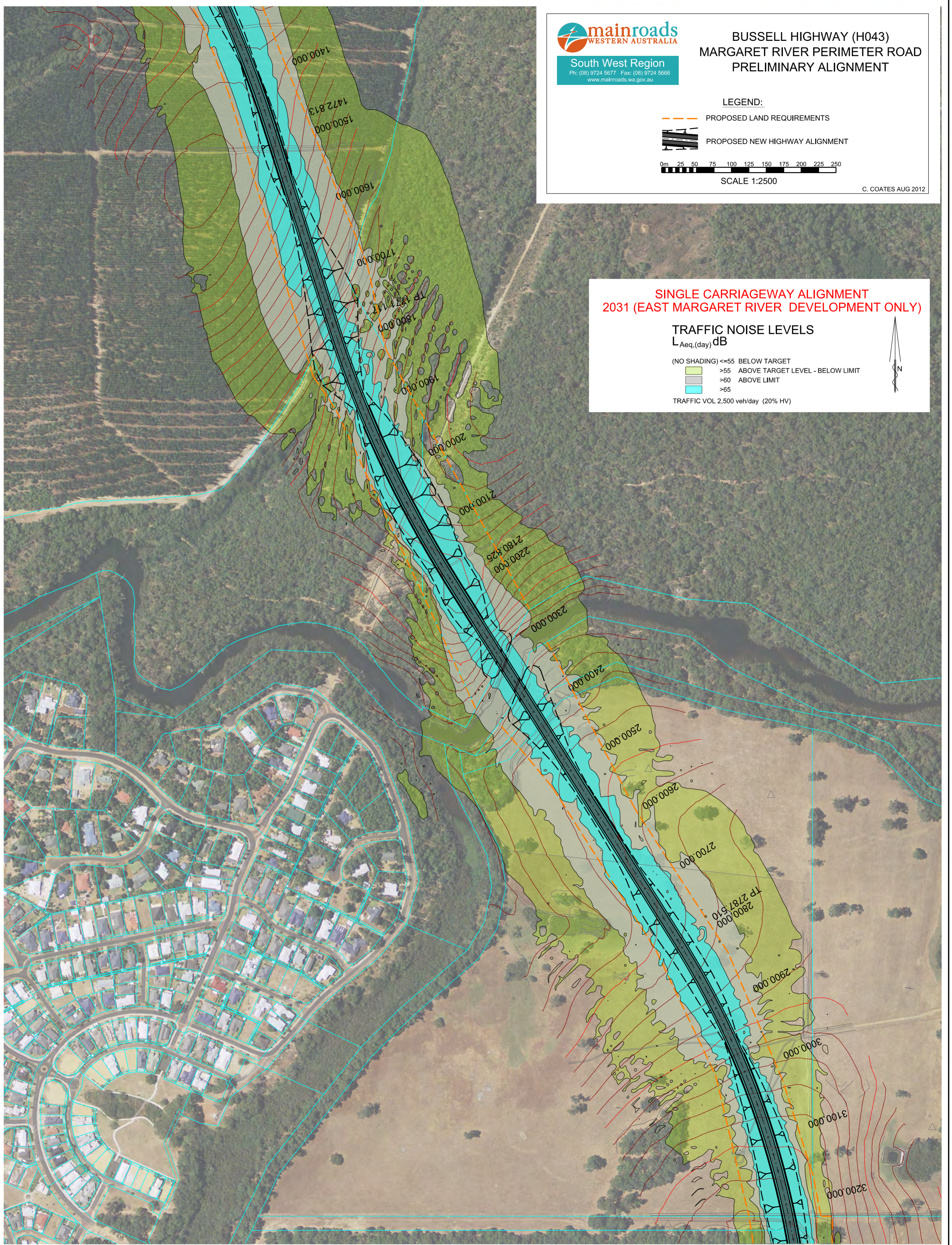
**SINGLE CARRIAGEWAY ALIGNMENT  
2031 (EAST MARGARET RIVER DEVELOPMENT ONLY)**

**TRAFFIC NOISE LEVELS**



$L_{Aeq,(day)}$  dB

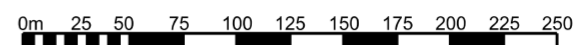
- (NO SHADING)  $\leq 55$  BELOW TARGET
-   $> 55$  ABOVE TARGET LEVEL - BELOW LIMIT
-   $> 60$  ABOVE LIMIT
-   $> 65$

TRAFFIC VOL 2,500 veh/day (20% HV)



**LEGEND:**

-  PROPOSED LAND REQUIREMENTS
-  PROPOSED NEW HIGHWAY ALIGNMENT



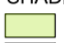
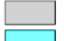

SCALE 1:2500

C. COATES SEP 2012

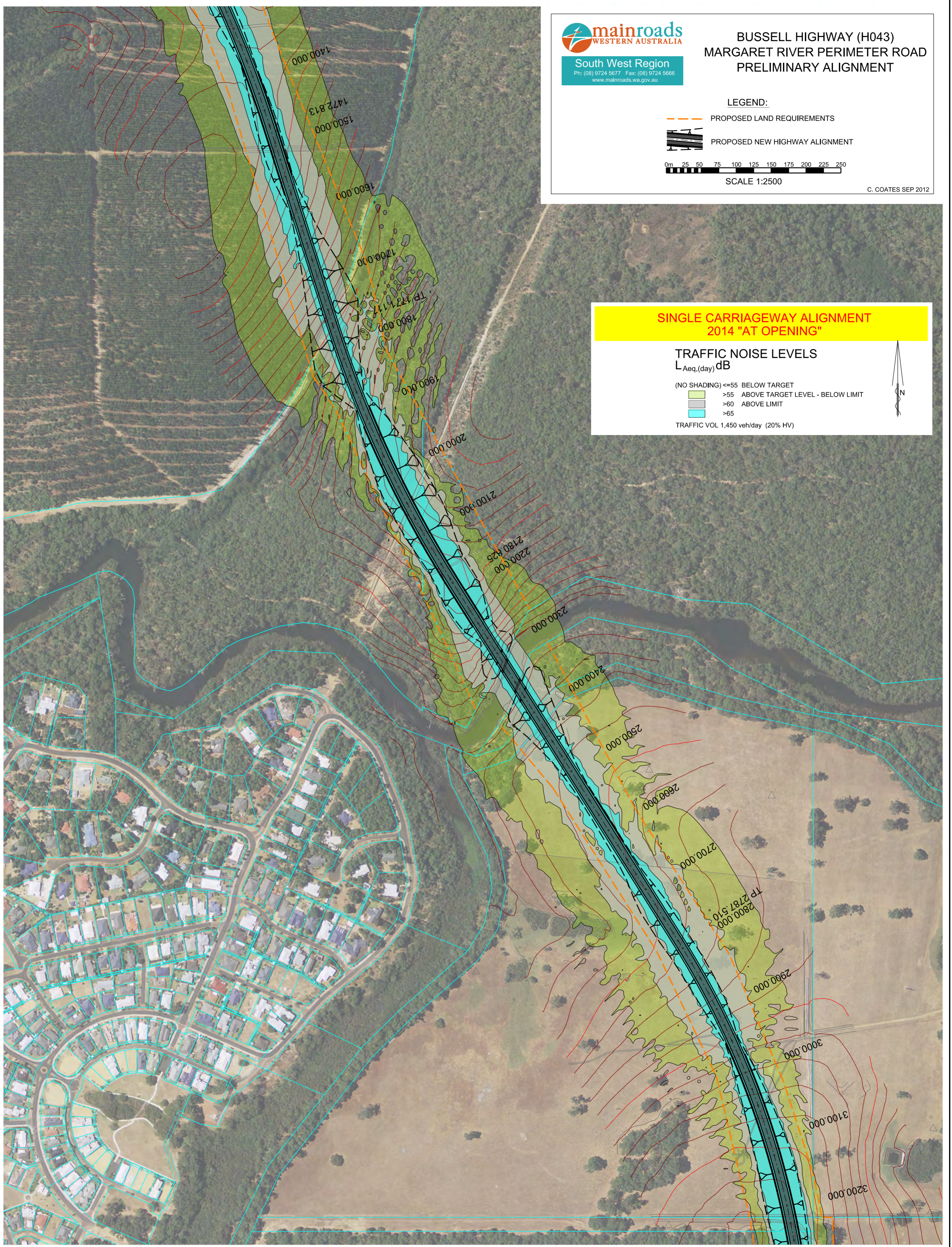
**SINGLE CARRIAGEWAY ALIGNMENT  
2014 "AT OPENING"**

**TRAFFIC NOISE LEVELS**

$L_{Aeq,(day)}$  dB

- (NO SHADING)  $\leq 55$  BELOW TARGET
-   $> 55$  ABOVE TARGET LEVEL - BELOW LIMIT
-   $> 60$  ABOVE LIMIT
-   $> 65$



TRAFFIC VOL 1,450 veh/day (20% HV)

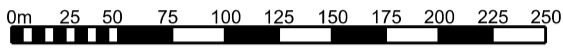




**BUSSELL HIGHWAY (H043)  
MARGARET RIVER PERIMETER ROAD  
PRELIMINARY ALIGNMENT**

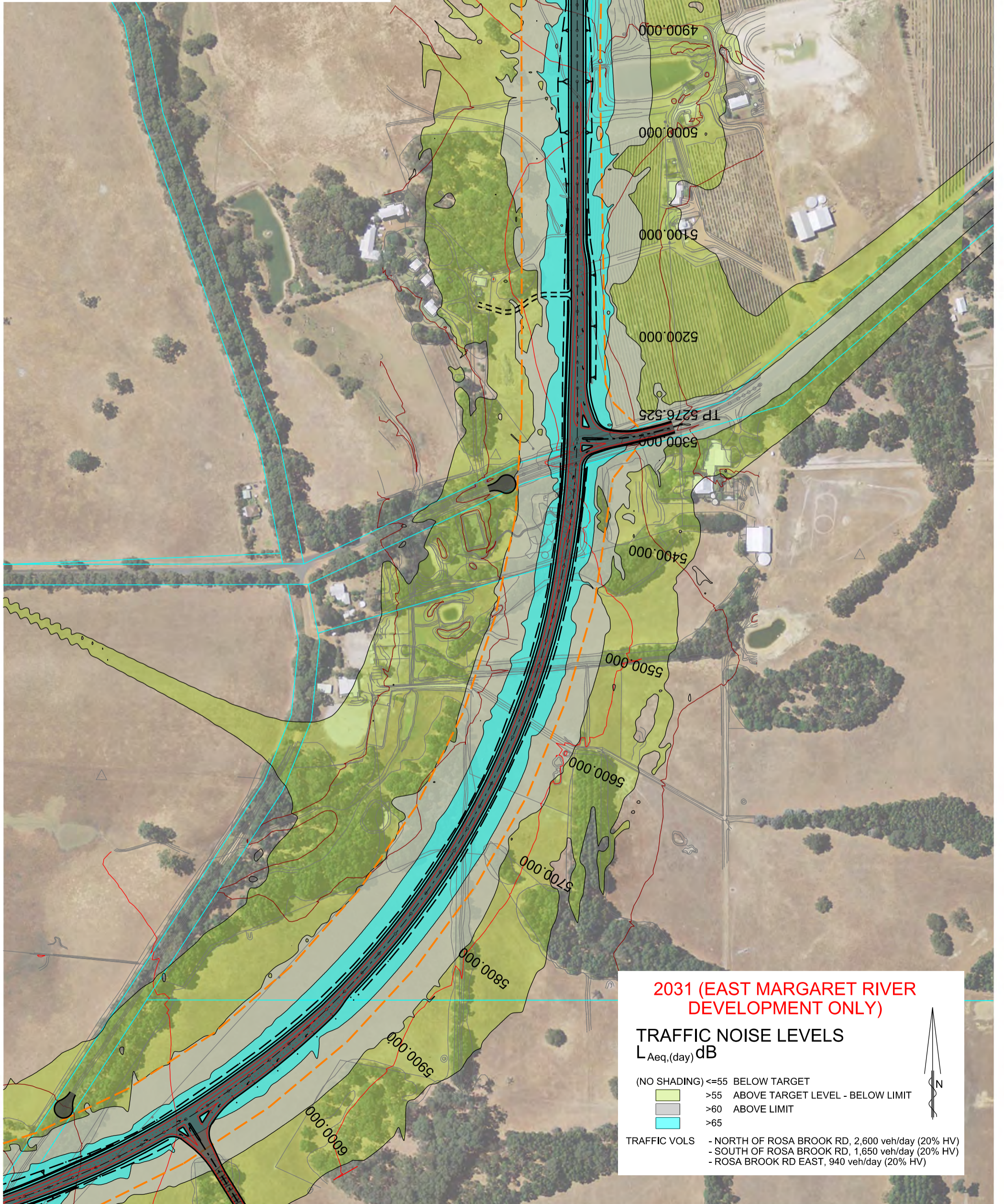
**LEGEND:**

-  PROPOSED LAND REQUIREMENTS
-  PROPOSED NEW HIGHWAY ALIGNMENT



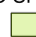


SCALE 1:2500

C. COATES AUG 2012



**2031 (EAST MARGARET RIVER  
DEVELOPMENT ONLY)**

**TRAFFIC NOISE LEVELS**  
 $L_{Aeq,(day)}$  dB



- (NO SHADING)  $\leq 55$  BELOW TARGET
-   $> 55$  ABOVE TARGET LEVEL - BELOW LIMIT
-   $> 60$  ABOVE LIMIT
-   $> 65$

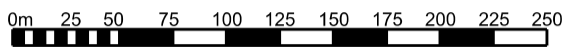
- TRAFFIC VOLS
- NORTH OF ROSA BROOK RD, 2,600 veh/day (20% HV)
  - SOUTH OF ROSA BROOK RD, 1,650 veh/day (20% HV)
  - ROSA BROOK RD EAST, 940 veh/day (20% HV)



**BUSSELL HIGHWAY (H043)  
MARGARET RIVER PERIMETER ROAD  
PRELIMINARY ALIGNMENT**

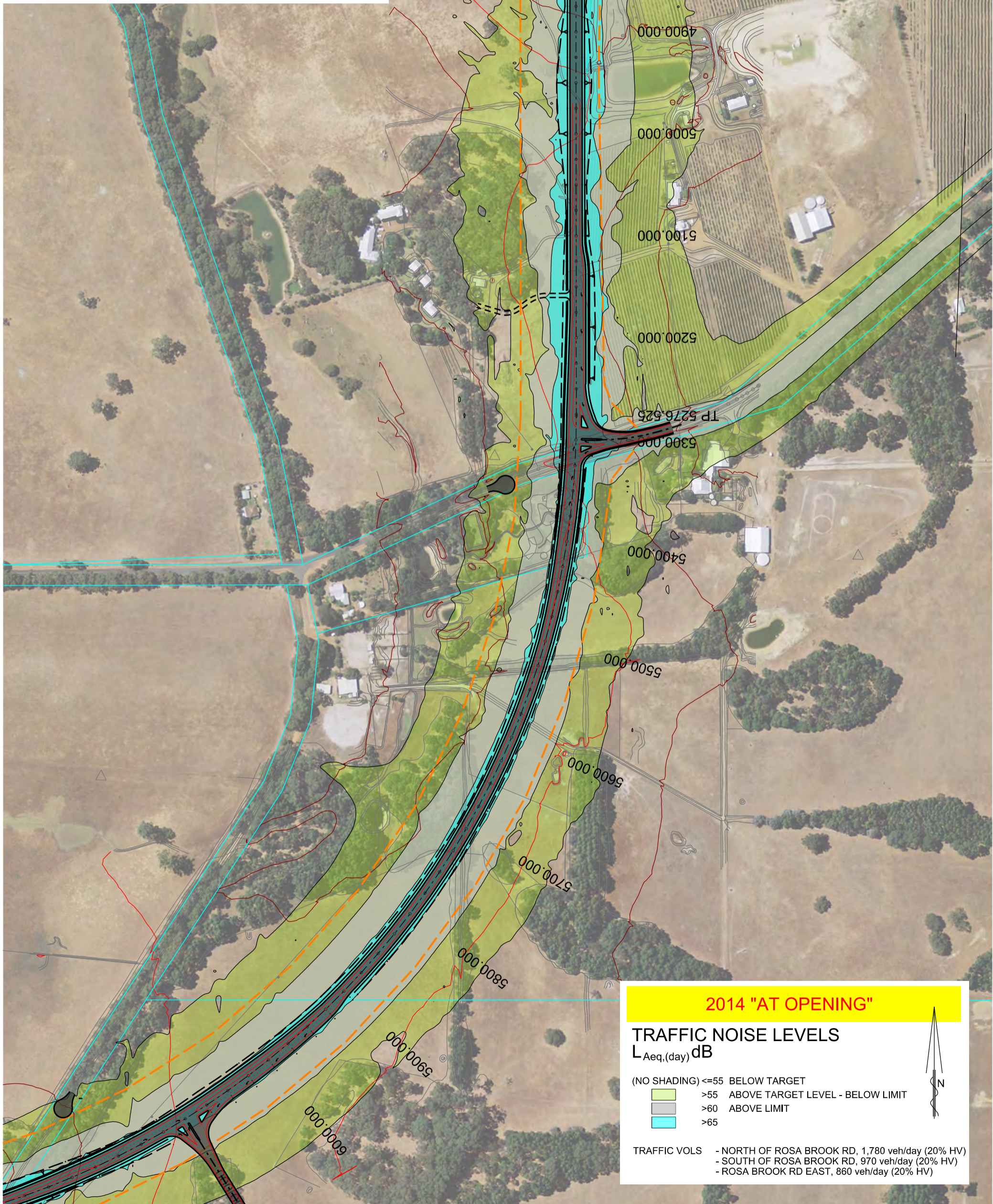
**LEGEND:**

-  PROPOSED LAND REQUIREMENTS
-  PROPOSED NEW HIGHWAY ALIGNMENT






SCALE 1:2500

C. COATES SEP 2012



**2014 "AT OPENING"**

**TRAFFIC NOISE LEVELS**  
 $L_{Aeq,(day)}$  dB

- (NO SHADING)  $\leq 55$  BELOW TARGET
-   $> 55$  ABOVE TARGET LEVEL - BELOW LIMIT
-   $> 60$  ABOVE LIMIT
-   $> 65$

- TRAFFIC VOLS
- NORTH OF ROSA BROOK RD, 1,780 veh/day (20% HV)
  - SOUTH OF ROSA BROOK RD, 970 veh/day (20% HV)
  - ROSA BROOK RD EAST, 860 veh/day (20% HV)



# **John Archibald Drive**



South West Region  
 Ph: (08) 9724 5677 Fax: (08) 9724 5666  
 www.mainroads.wa.gov.au

**BUSSELL HIGHWAY (H043)  
 MARGARET RIVER PERIMETER ROAD  
 PRELIMINARY ALIGNMENT  
 (JOHN ARCHIBALD DRIVE)**

**LEGEND:**

--- PROPOSED LAND REQUIREMENTS

▬▬▬ PROPOSED NEW HIGHWAY ALIGNMENT

0m 25 50 75 100 125 150 175 200 225 250

SCALE 1:2500

C. COATES NOV 2012

**2014 "AT OPENING"**

**TRAFFIC NOISE LEVELS**  
 L<sub>Aeq,(day)</sub> dB

- (NO SHADING) <=55 BELOW TARGET
- <img alt="light green box" data-bbox="808 888 824 904"/> >55 ABOVE TARGET LEVEL - BELOW LIMIT
- <img alt="grey box" data-bbox="808 904 824 920"/> >60 ABOVE LIMIT
- <img alt="cyan box" data-bbox="808 920 824 936"/> >65





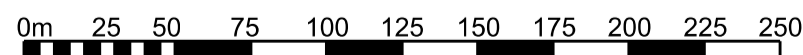


South West Region  
 Ph: (08) 9724 5677 Fax: (08) 9724 5666  
 www.mainroads.wa.gov.au

**BUSSELL HIGHWAY (H043)  
 MARGARET RIVER PERIMETER ROAD  
 PRELIMINARY ALIGNMENT  
 (JOHN ARCHIBALD DRIVE)**

**LEGEND:**

-  PROPOSED LAND REQUIREMENTS
-  PROPOSED NEW HIGHWAY ALIGNMENT






SCALE 1:2500

C. COATES NOV 2012

**2031 (EAST MARGARET RIVER  
 DEVELOPMENT ONLY)**

**TRAFFIC NOISE LEVELS**  
 $L_{Aeq,(day)}$  dB

- (NO SHADING)  $\leq 55$  BELOW TARGET
-   $>55$  ABOVE TARGET LEVEL - BELOW LIMIT
-   $>60$  ABOVE LIMIT
-   $>65$

