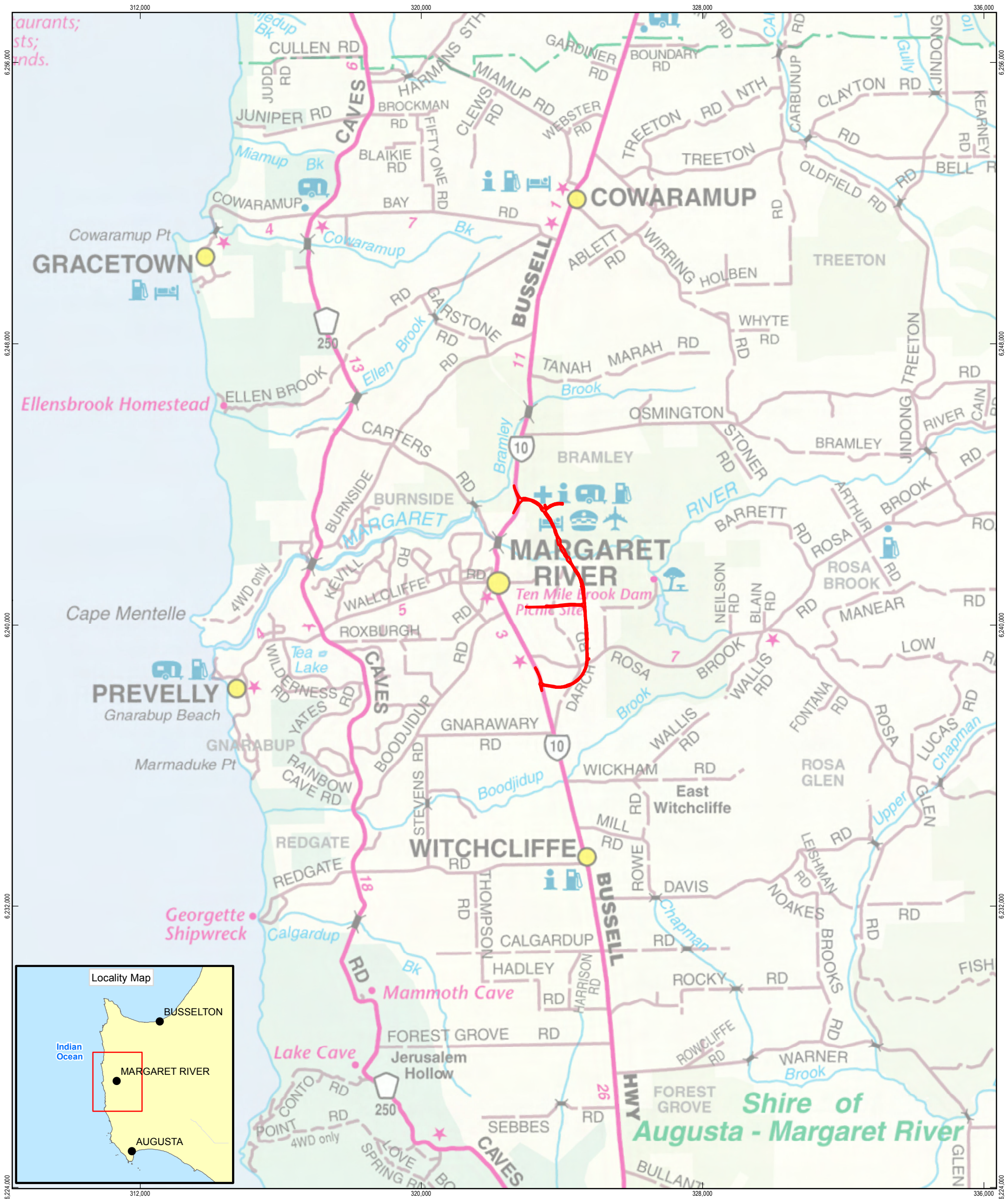
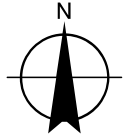
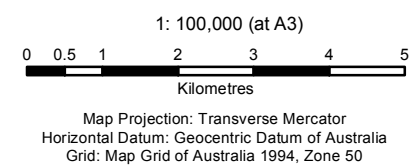


Appendix B - Figures



LEGEND

Project Area

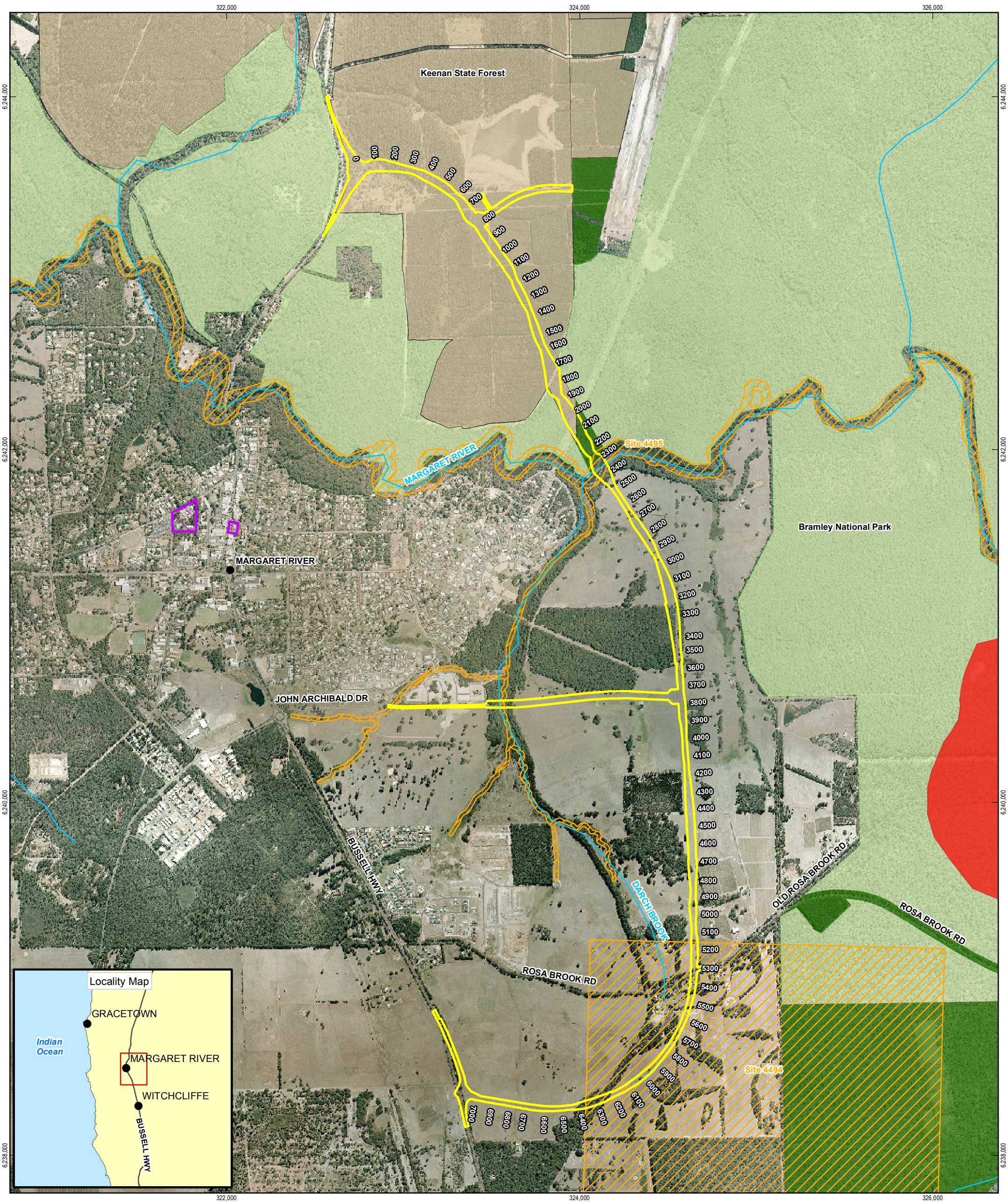


Main Roads Western Australia
Margaret River Bypass

Job Number	61-27189
Revision	0
Date	14 Nov 2012

Project Location

Figure 1

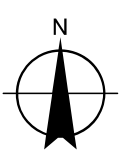


LEGEND

- | | | |
|---|-------------------|----------------------------|
| Rivers | DEC Estate | Heritage |
| Project Area | National Park | European Heritage |
| Public Drinking Water Source Areas | State Forest | Aboriginal Heritage |
| Protection Area-P1 | Timber Reserve | 2300 Chainage Point |

1: 20,000 (at A3)
0 100 200 400 600 800 1,000
Metres

Map Projection: Transverse Mercator
Horizontal Datum: Geocentric Datum of Australia
Grid: Map Grid of Australia 1994, Zone 50



powered by
SLIP ENABLER

Main Roads Western Australia
Margaret River Bypass

Environmental Context - DEC Estate, PDWSA, and Heritage

Job Number | 61-27189
Revision | 0
Date | 14 Nov 2012

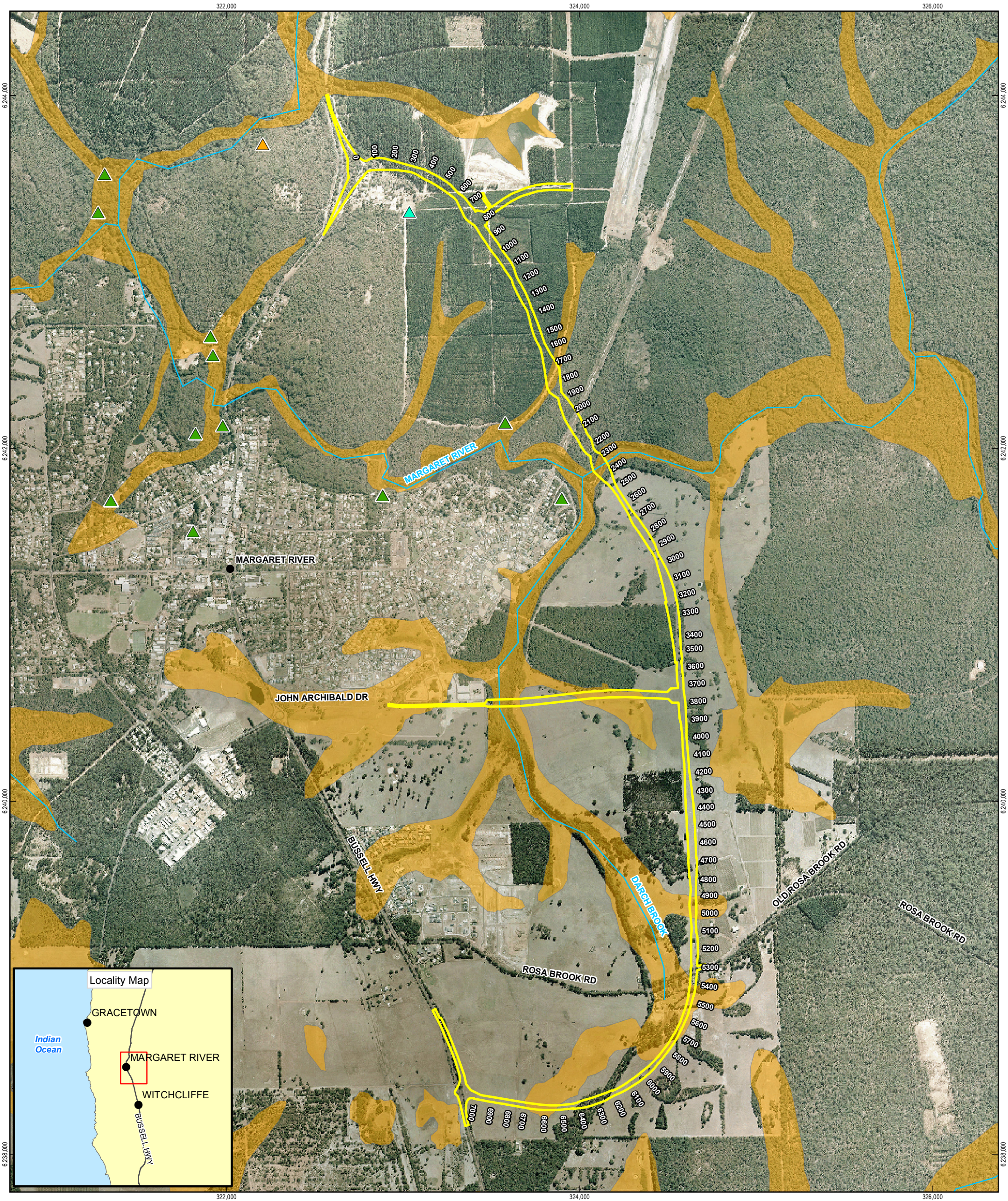
Figure 2

G:\6127189\GIS\Maps\MXD\6127189_G010_Fig2_Rev0.mxd

© 2011. Whilst every care has been taken to prepare this map, GHD, GA, DoW, DIA, DoP, MRWA, and Landgate make no representations or warranties about its accuracy, reliability, completeness or suitability for any particular purpose and cannot accept liability and responsibility of any kind (whether in contract, tort or otherwise) for any expenses, losses, damages and/or costs (including indirect or consequential damage) which are or may be incurred by any party as a result of the map being inaccurate, incomplete or unsuitable in any way and for any reason.

Data source: MRWA: Roads - 20091028; GHD: Project Area - 20121023; Chainage Point - 20120828; DEC: DEC Estate - 20120823; DOW: Public Drinking Water Source Areas - 20100406; DIA: Aboriginal Heritage - 20120823; DoP: European Heritage - 20120823; Landgate: Busselton 2010 Mosaic - 20111206; GA: NatMap Geodata 250K Topographic Series 3 - 2006. Created by: cagilbert, eric

239 Adelaide Terrace Perth WA 6004 Australia T 61 8 6222 8222 F 61 8 6222 8555 E permail@ghd.com.au W www.ghd.com.au



LEGEND

Threatened (Declared Rare) & Priority Flora

- ▲ (T) Threatened Rare Flora - Extant Taxa
- ▲ Priority 1 - Poorly Known Taxa
- ▲ Priority 2 - Poorly Known Taxa

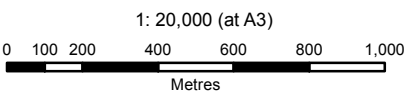
- ▲ Priority 3 - Poorly Known Taxa
- ▲ Priority 4 - Rare Taxa
- ▲ Priority 5 - Conservation Dependent Taxa

Project Area

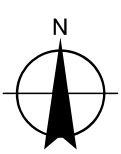
Acid Sulfate Soil Risk Mapping

- Orange shaded area: Moderate to low ASS disturbance risk (<3m from surface)

2300 Chainage Point



Map Projection: Transverse Mercator
Horizontal Datum: Geocentric Datum of Australia
Grid: Map Grid of Australia 1994, Zone 50



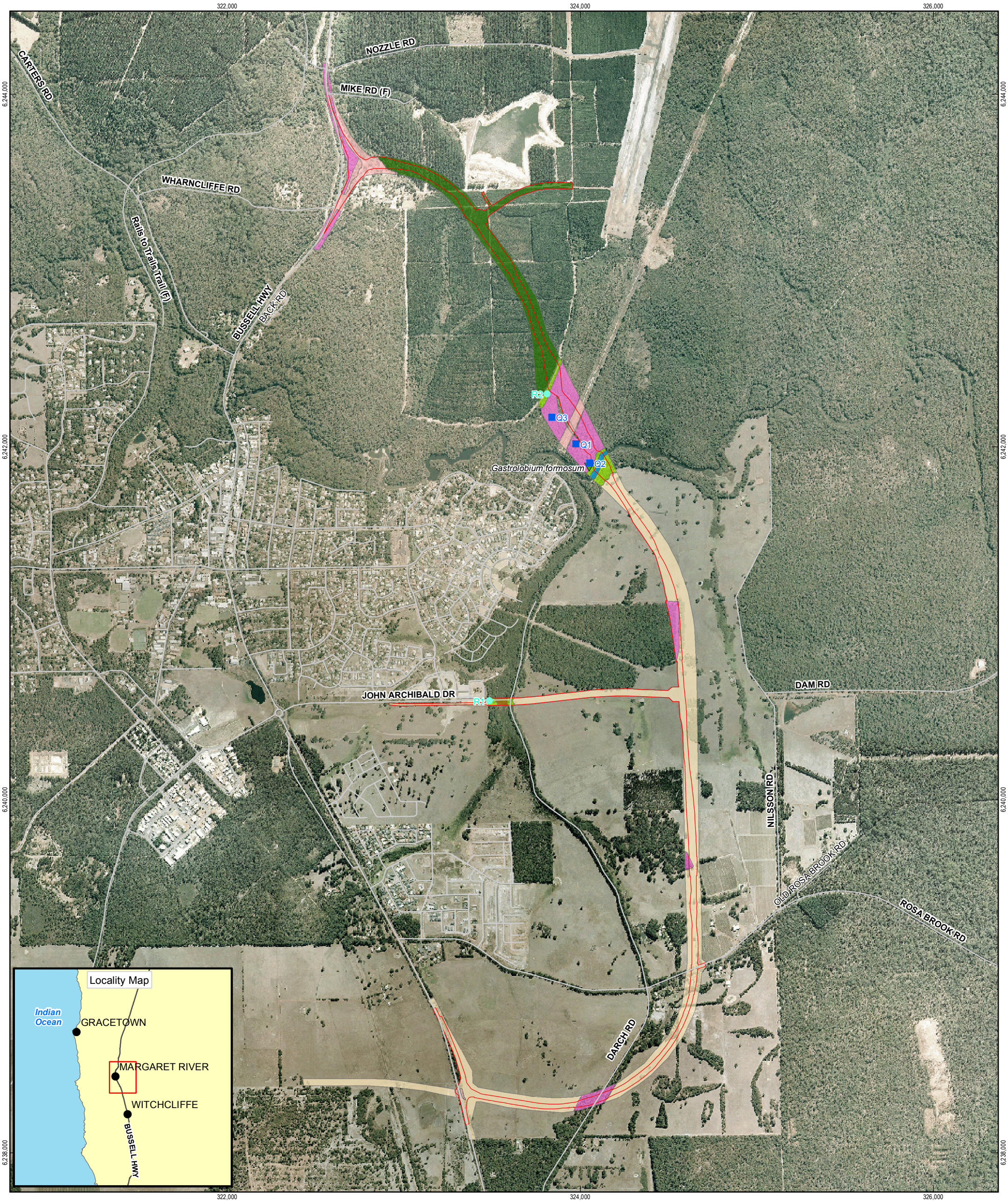
powered by
SLIP ENABLER

Main Roads Western Australia
Margaret River Bypass

Environmental Context - Flora and Acid Sulfate Soil Risk

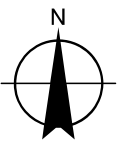
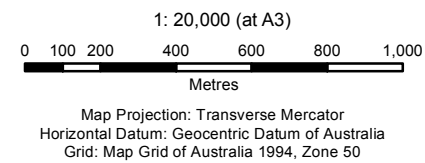
Job Number | 61-27189
Revision | 0
Date | 14 Nov 2012

Figure 3



LEGEND

- | | | | | | |
|-----------|---|----------------------------------|----------------|----------------------------|----------------------------------|
| ■ Quadrat | GHD Declared Rare & Priority Species | ▼ Priority 2 - Poorly Known Taxa | — Roads | Vegetation Type | ■ Jarrah Marri Forest |
| ● Releve | ▼ (T) Threatened Flora - Extant Taxa | ▼ Priority 3 - Poorly Known Taxa | ▭ Project Area | ■ Cleared Farmland | ■ Jarrah Marri Peppermint Forest |
| | ▼ Priority 1 - Poorly Known Taxa | ▼ Priority 4 - Rare Taxa | | ■ Closed Scrub | ■ Pine Plantation |
| | | | | ■ Highly Disturbed/Planted | ■ Water Body |

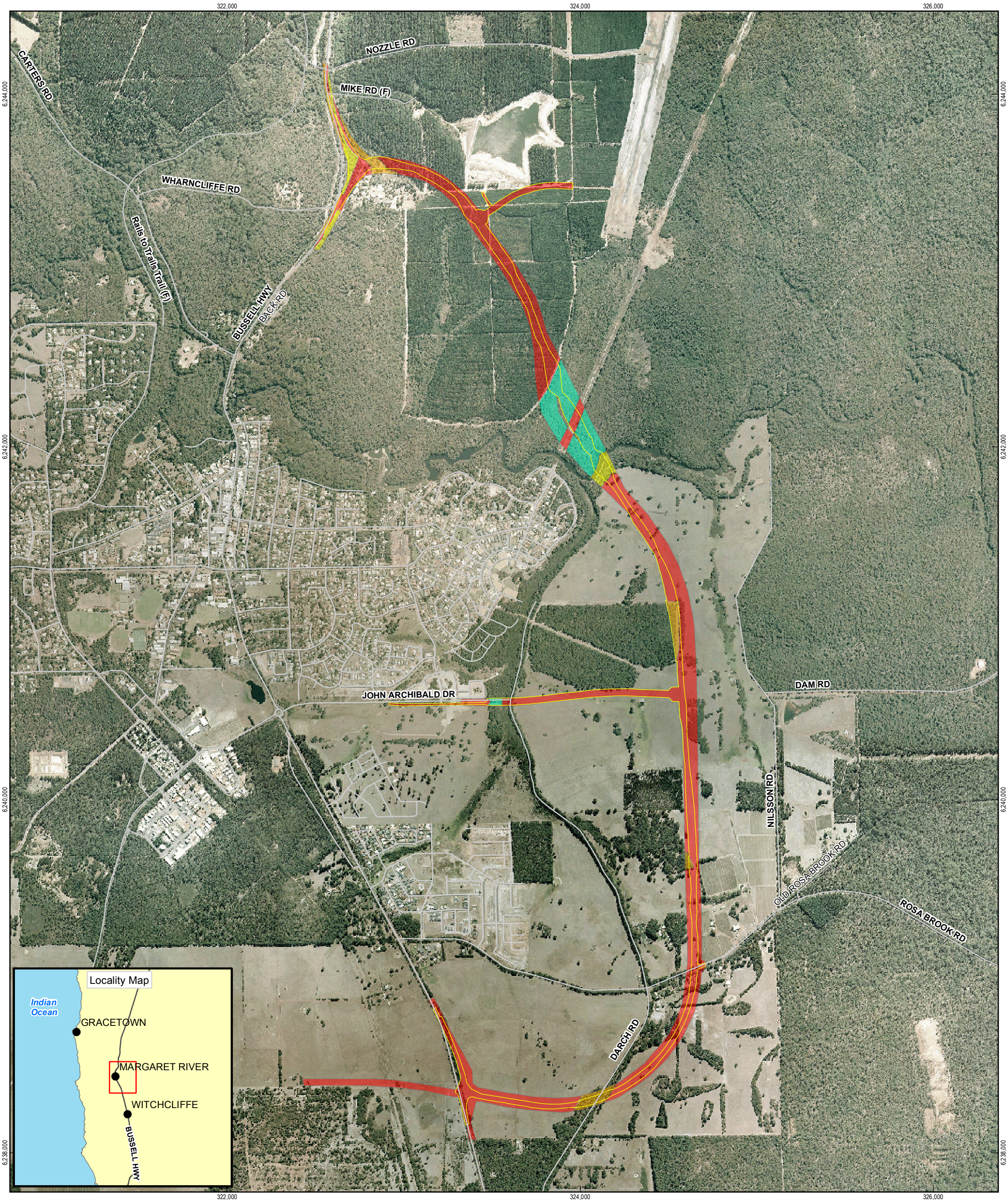


Main Roads Western Australia
Margaret River Bypass

Vegetation Type

Job Number | 61-27189
Revision | 2
Date | 14 Nov 2012

Figure 4



LEGEND

Roads

Project Area

Vegetation Condition

1. Pristine or Nearly So

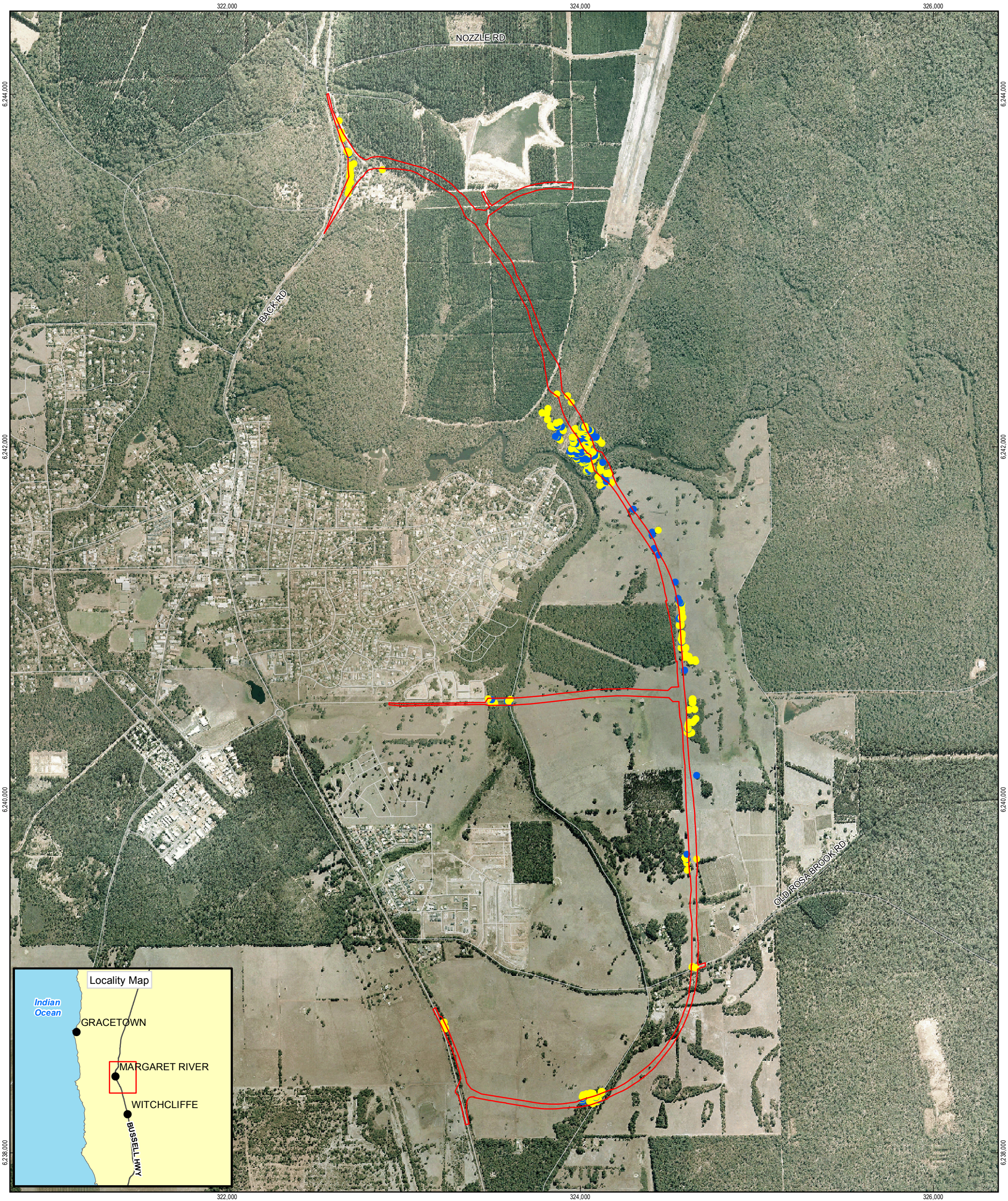
2. Excellent

3. Very Good

4. Good

5. Degraded

6. Completely Degraded

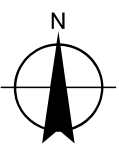
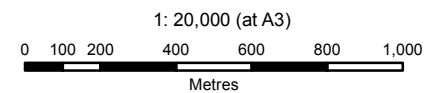


LEGEND

- Potential Cockatoo Breeding Trees**

 - Trees > 500mm DBH
 - Possible Black Cockatoo Breeding Areas (Large tree with Hollows)
- Roads

▭ Project Area



Main Roads Western Australia
Margaret River Bypass

Job Number	61-27189
Revision	2
Date	14 Nov 2012

Potential Cockatoo Breeding Trees

Figure 6