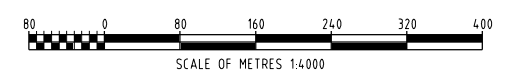


- LEGEND:**
- PER --- PER BOUNDARY
 - TWB --- TEMPORARY WORKS BOUNDARY
 - TWB/PER --- TEMPORARY WORKS/PER BOUNDARY
 - RESERVE UNDER MANAGEMENT ORDER TO PPA
 - PPA PORT VESTED
 - LUMSDEN ENVIRONMENTAL BOUNDARY

- NOTES:**
1. FOR TUG INFRASTRUCTURE DREDGING SPOIL MATERIALS WILL BE PUMPED TO ESA. TAILWATER WILL BE CHANNLED THROUGH SESA AND DISCHARGE WILL BE THROUGH THE ESA DISCHARGE CHANNEL
 2. SESA TO BE FILLED TO A MAXIMUM LEVEL OF +9.50m AHD.
 3. ESA AND SESA CONTOURS DERIVED FROM LIDAR FILES PIL_ELEV_FMG_n_PORT_HEDLAND_IM_DEM_NOVEMBER2014.xyz SUPPLIED 24/02/2015.

INFORMATION ONLY
NOT TO BE USED
FOR CONSTRUCTION

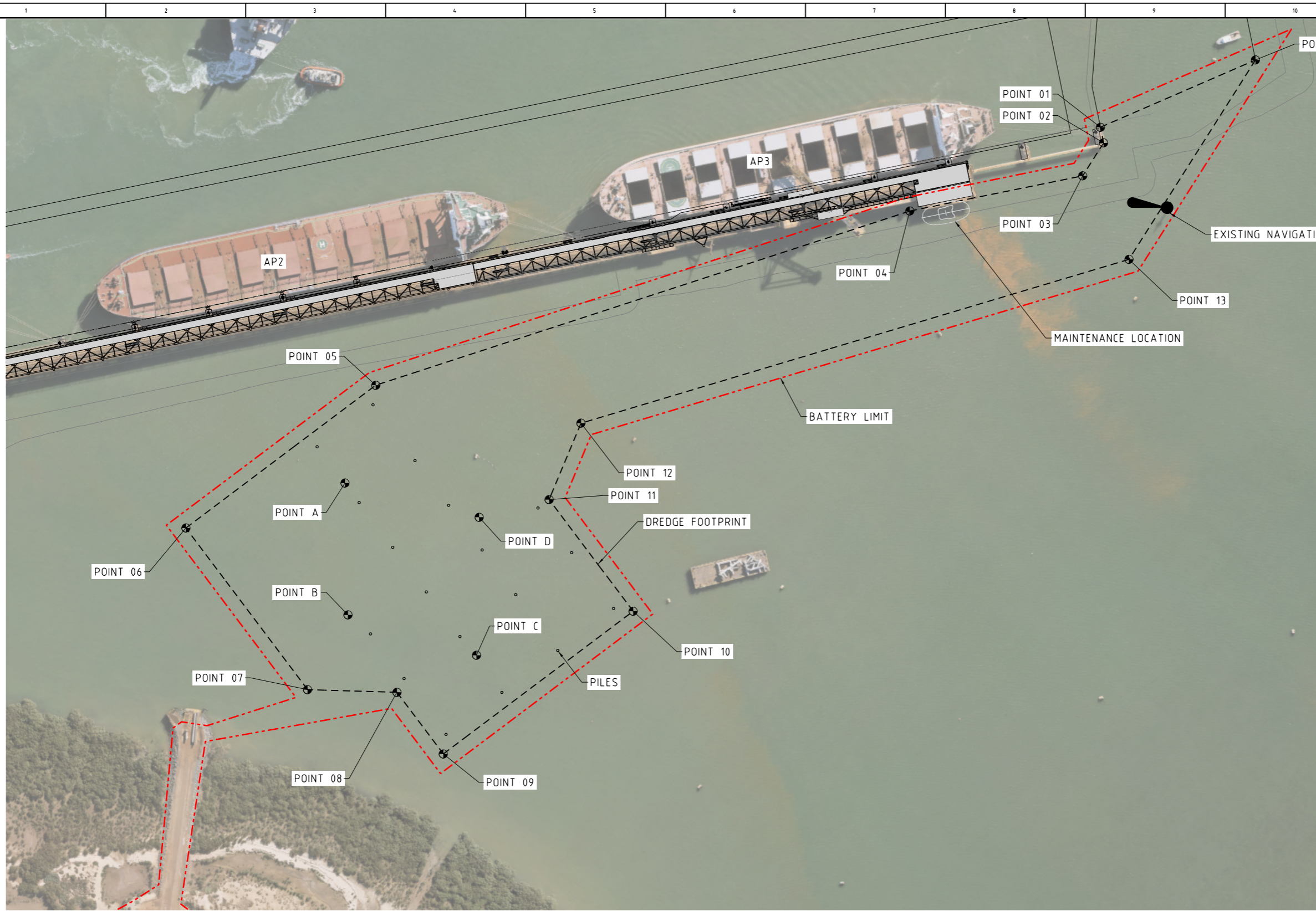


26/2/2015 11:03:39 AM Y:\201002-00457 FMG Consulting\WBS042\11.0 Drawings\01 Cr-Civil\03 Project DWG\560PO-4320-DR-MA-0002.dgn

REF DRG No.		TITLE		REV	DATE	DESCRIPTION	DRN	CHK	SUP	DES	DAP	PAP	FMG	PROJECT NUMBER 530P		VENDOR/DESIGNER DRG No. Fortescue Metals Group Ltd		REV:
				D	06.02.15	RE-ISSUED FOR TENDER								This drawing must not be copied or reproduced in any form or used for any purpose other than originally intended without written approval of Fortescue Metals Group Ltd		PORT TOWAGE SERVICES TUG INFRASTRUCTURE DREDGING SESA & ESA DISPOSAL AREAS GENERAL ARRANGEMENT		REV:
				C	05.02.15	ISSUED FOR TENDER	PK	BB	HCK	DF	DF			SCALE 1:4000		DRG No. 560PO-4320-DR-MA-0002		D
				B	03.02.15	ISSUED FOR CLIENT REVIEW	PK	BB	HCK	DF	DF			A1				
				A	03.02.15	ISSUED FOR INTERNAL REVIEW	PK	BB	DF									
				-	02.02.15	COMMENCED	PK	BB	DF									



NORTH



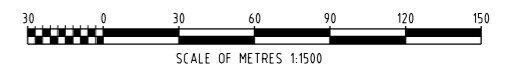
- NOTES:**
1. ALL DIMENSIONS IN MILLIMETRES (mm)
 2. ALL LEVELS IN METRES (m)

- LEGEND:**
- BATTERY LIMIT
 - DREDGE FOOTPRINT

DREDGE FOOTPRINT SETOUT POINTS		
PT No.	EASTING	NORTHING
01	665260.10	7751071.56
02	665253.51	7751062.29
03	665226.06	7751057.11
04	665123.17	7751130.27
05	664771.09	7751324.36
06	664603.67	7751353.88
07	664578.53	7751211.28
08	664620.82	7751163.20
09	664611.24	7751108.85
10	664778.65	7751079.33
11	664796.02	7751177.81
12	664851.54	7751198.56
13	665204.99	7750992.08
14	665371.08	7751023.41

INDICATIVE BOREHOLE SETOUT POINTS		
PT No.	EASTING	NORTHING
A	664704.91	7751292.66
B	664637.40	7751226.62
C	664679.10	7751139.73
D	664752.57	7751205.78

**INFORMATION ONLY
NOT TO BE USED
FOR CONSTRUCTION**

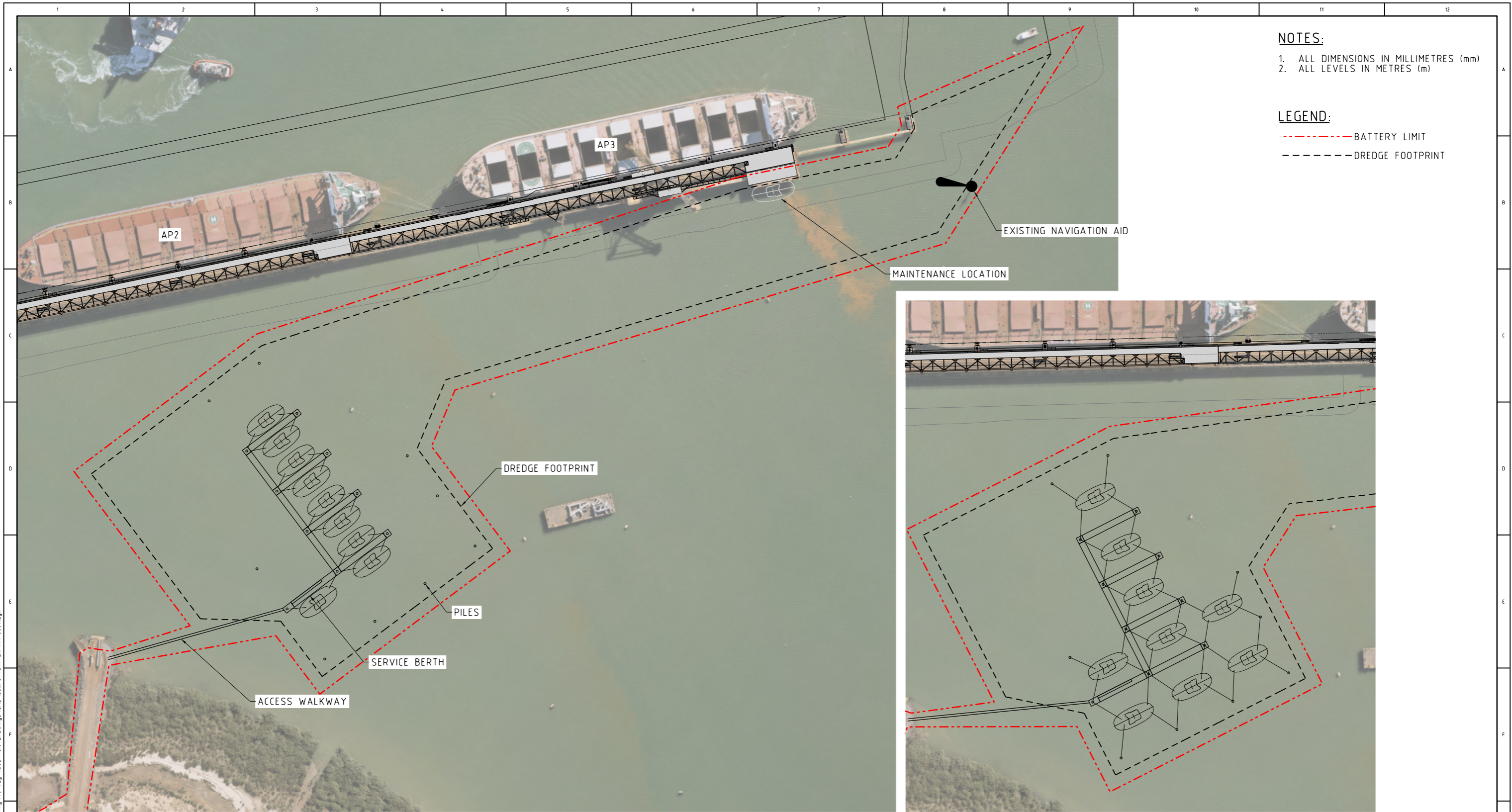


VENDOR/DESIGNER DRG No.	REV:
Fortescue Metals Group Ltd	
PORT TOWAGE SERVICES TUG INFRASTRUCTURE ANDERSON POINT TUG HAVEN DREDGE AND PILING FOOTPRINT	
PROJECT NUMBER 201012-00457	DRG No: 560PO-4347-DR-MA-0006
SCALE 1:1500	REV: D

REF	DRG No.	TITLE	REV	DATE	DESCRIPTION	DRN	CHK	SUP	DES	DAP	PAP	FMG
			D	20.07.15	ISSUED FOR TENDER	TMJ	ST	HCK	HCK	DF	DF	
			C	13.07.15	ISSUED FOR CLIENT REVIEW	TMJ		HCK	HCK	DF		
			B	30.06.15	ISSUED FOR SQUAD CHECK	TMJ		HCK	HCK	DF		
			A	24.06.15	ISSUED FOR INTERNAL REVIEW	TMJ		HCK				
560PO-4347-DR-MA-0001		ANDERSON POINT LAYOUT										



21/07/2015 3:51:23 PM \\perworfil\201012-00457 AP3 PROJECT\10.0.Engineering\40 Tug Haven\6.0 Drawings\CAD\560PO-4347-DR-MA-0006.dgn



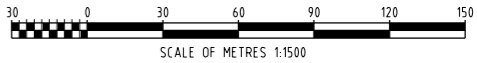
- NOTES:**
1. ALL DIMENSIONS IN MILLIMETRES (mm)
 2. ALL LEVELS IN METRES (m)

- LEGEND:**
- BATTERY LIMIT
 - DREDGE FOOTPRINT

9 TUG LAYOUT DURING OPERATIONS

9 TUG LAYOUT DURING CYCLONE

INFORMATION ONLY
 NOT TO BE USED
 FOR CONSTRUCTION



VENDOR/DESIGNER DRG No. REV:

REF DRG No.	TITLE	REV	DATE	DESCRIPTION	DRN	CHK	SUP	DES	DAP	PAP	FMG
560PO-4347-DR-MA-0001	ANDERSON POINT LAYOUT	D	20.07.15	ISSUED FOR TENDER	TMJ	ST	HCK	HCK	DF	DF	
		C	13.07.15	ISSUED FOR CLIENT REVIEW	TMJ		HCK	HCK	DF		
		B	30.06.15	ISSUED FOR SQUAD CHECK	TMJ		HCK	HCK	DF		
		A	24.06.15	ISSUED FOR INTERNAL REVIEW	TMJ		HCK	HCK			

STANDARDS CHECK APPROVED

NORTH

PROJECT NUMBER
201012-00457

This drawing must not be copied or reproduced in any form or used for any purpose other than originally intended without written approval of Fortescue Metals Group Ltd

SCALE
1:1500

DRG No.
560PO-4347-DR-MA-0007

REV:
D

Fortescue Metals Group Ltd

PORT TOWAGE SERVICES
 TUG INFRASTRUCTURE
 ANDERSON POINT TUG HAVEN
 TUG HAVEN LAYOUT

21/07/2015 3:53:31 PM \\perworffit\201012-00457 AP3 PROJECT\10.0.Engineering\40 Tug Haven\6.0 Drawings\CAD\560PO-4347-DR-MA-0007.dgn