


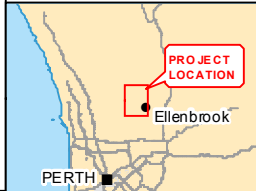
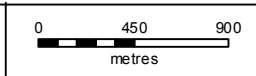


Legend

-  Roads
-  Construction Footprint Area/ Project Area, 28.4 ha
-  Outlet Pipe
-  Inlet Pipe

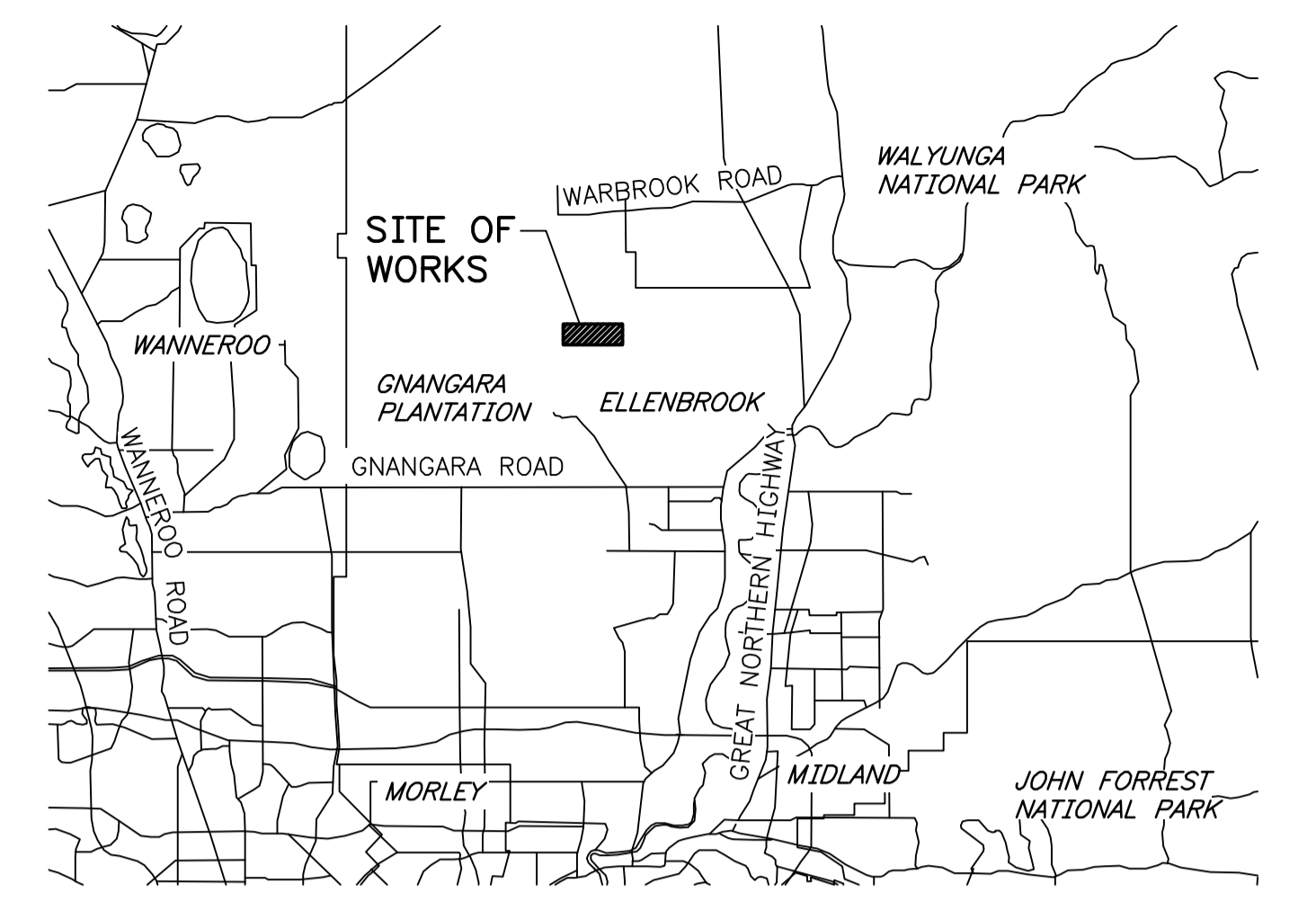
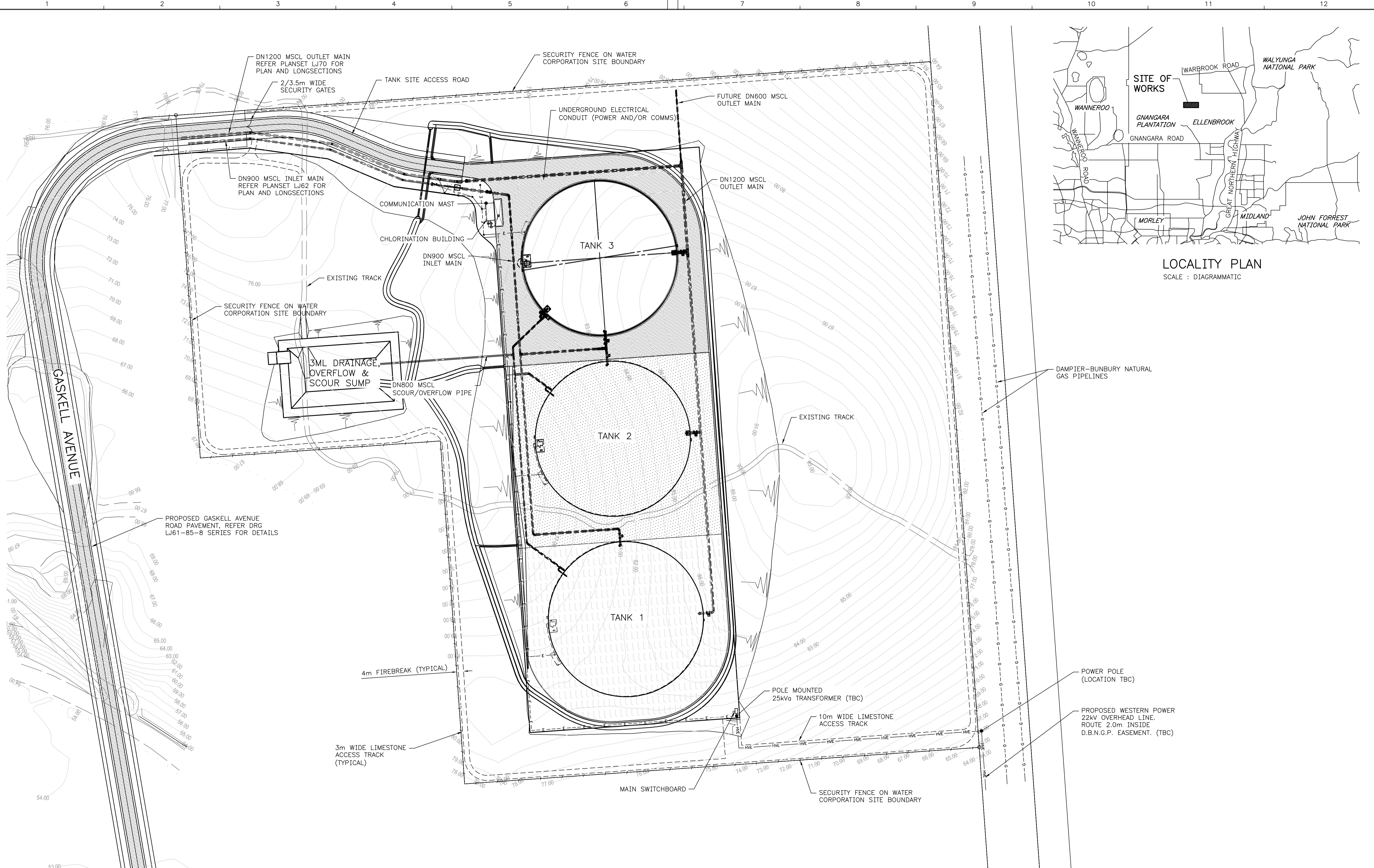


AUTHOR: JACKSON0 DATE: 21/01/2015
 GROUP: EIA & Approvals Section PROJECT: ERWS Project (C-W00179)



Ellenbrook Reliable Water Storage Project (C-W00179)
Figure 1 - Site Locality

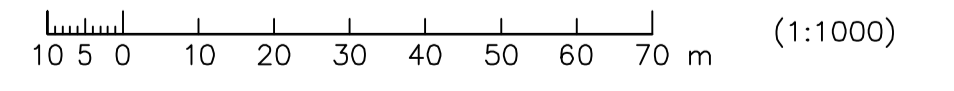
The information contained herein is the exclusive property of the water corporation and its respective copyright owners. It is subject to ongoing review and should be viewed in conjunction with the associated materials. No part of this production should be copied, modified, reproduced or published in any form other than that intended by the author.



LOCALITY PLAN
SCALE : DIAGRAMMATIC

ENGINEERING DESIGN - NOT FOR CONSTRUCTION

DATE : 20-Jan-2015



ISSUE	DATE	GRID	REVISION	DRN	REC	APPD
566						
810						

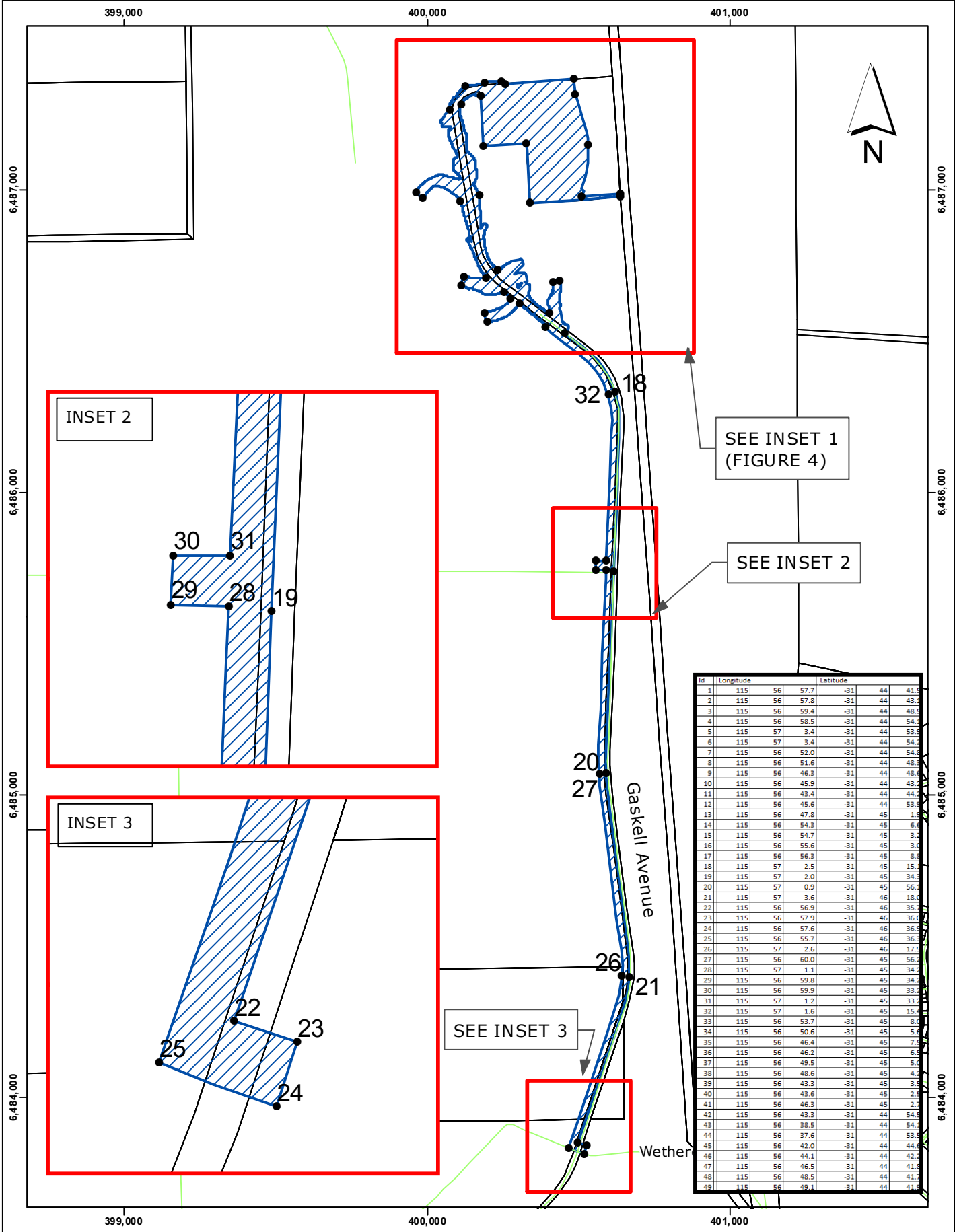
DESIGN SURVEY 61-30063-V01	VERTICAL DATUM AHD	DES CALC C.BAGSHAW	NORTH POINT
ASCONE SURVEY	COORDINATE SYS MGA94-50	DES CHD K.SINKO	
DES REF 61/30063	DRN C.BAGSHAW	Q.C. CHD K.BOSMAN	

RECOMMENDED	CONSULTANT JOB MANAGER
APPROVED	CONSULTANT PROJECT DIRECTOR

METROPOLITAN WATER SUPPLY
80000M3 ELLENBROOK TANK - GASKELL AVENUE MELALEUCA
ENGINEERING DESIGN
SITE PLAN

FILE	PLAN	CAD	ISSUE
PROJECT CW00179			A
FIGURE 2			

ORIGINAL SHEET SIZE
A1



Id	Longitude	Latitude
1	115 56 57.7	-31 44 41.5
2	115 56 57.8	-31 44 43.2
3	115 56 59.4	-31 44 49.5
4	115 56 58.5	-31 44 54.1
5	115 57 3.4	-31 44 53.9
6	115 57 3.4	-31 44 54.2
7	115 56 52.0	-31 44 54.8
8	115 56 51.6	-31 44 48.3
9	115 56 46.3	-31 44 48.6
10	115 56 45.9	-31 44 43.2
11	115 56 43.4	-31 44 44.2
12	115 56 45.6	-31 44 53.9
13	115 56 47.8	-31 45 1.5
14	115 56 54.3	-31 45 6.6
15	115 56 54.7	-31 45 3.2
16	115 56 55.6	-31 45 3.0
17	115 56 56.3	-31 45 8.8
18	115 57 2.5	-31 45 15.2
19	115 57 2.0	-31 45 34.3
20	115 57 0.9	-31 45 56.2
21	115 57 3.6	-31 46 18.0
22	115 56 56.9	-31 46 35.7
23	115 56 57.9	-31 46 36.0
24	115 56 57.6	-31 46 36.5
25	115 56 55.7	-31 46 36.3
26	115 57 2.6	-31 46 17.9
27	115 56 60.0	-31 45 56.1
28	115 57 1.1	-31 45 34.2
29	115 56 59.8	-31 45 34.2
30	115 56 59.9	-31 45 33.2
31	115 57 1.2	-31 45 33.2
32	115 57 1.6	-31 45 15.4
33	115 56 53.7	-31 45 8.0
34	115 56 50.6	-31 45 5.6
35	115 56 46.4	-31 45 7.9
36	115 56 46.2	-31 45 6.8
37	115 56 49.5	-31 45 5.0
38	115 56 48.6	-31 45 4.2
39	115 56 43.3	-31 45 3.6
40	115 56 43.6	-31 45 2.8
41	115 56 46.3	-31 45 2.7
42	115 56 43.3	-31 44 54.9
43	115 56 38.5	-31 44 54.2
44	115 56 37.6	-31 44 53.9
45	115 56 42.0	-31 44 44.6
46	115 56 44.1	-31 44 42.2
47	115 56 46.5	-31 44 41.3
48	115 56 48.5	-31 44 41.7
49	115 56 49.1	-31 44 41.8

LEGEND

- Cadastral Boundary
- Construction Footprint
- Area/ Project Area, 28.4 ha
- Project Area Coordinates

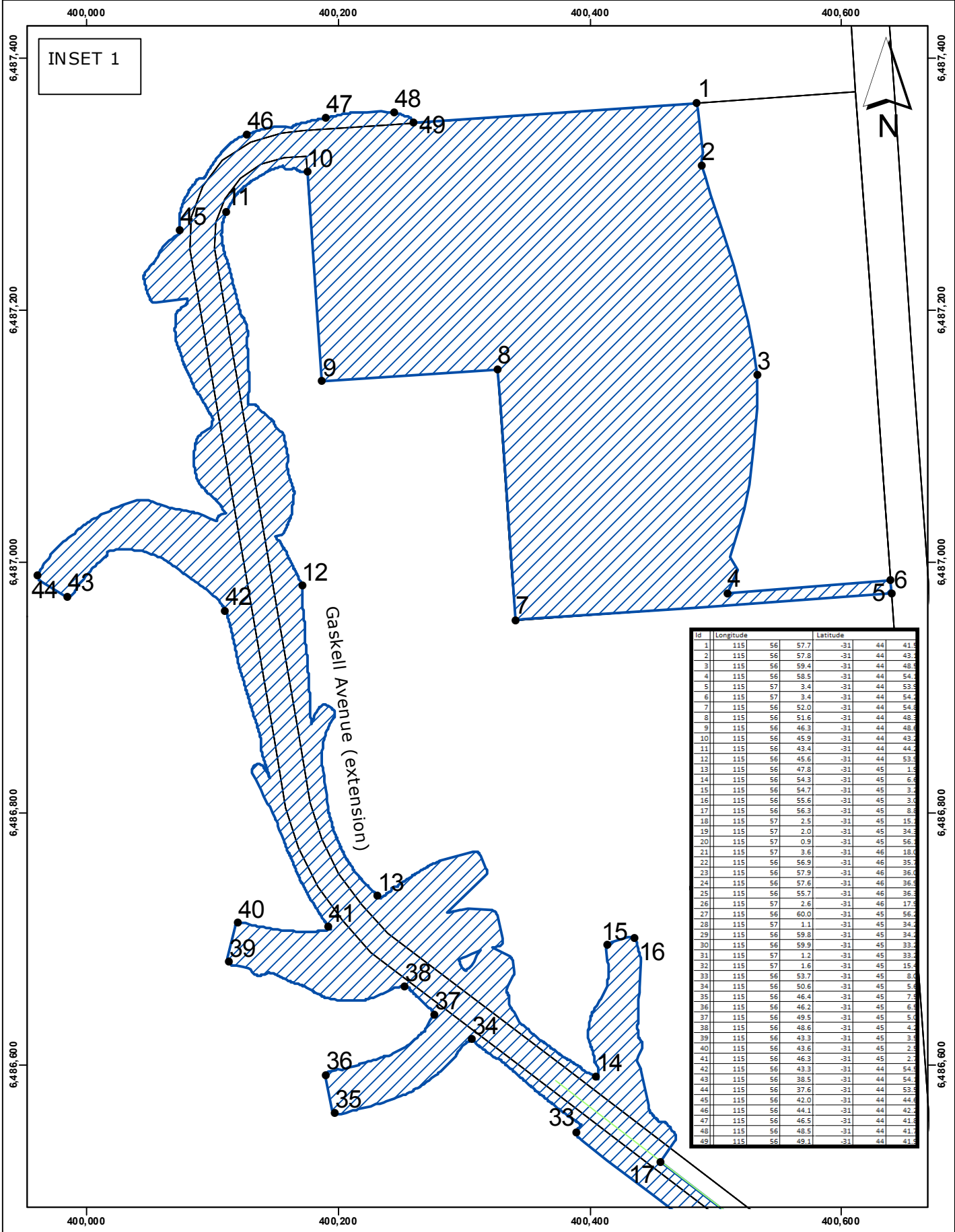
Coordinate System: GDA 1994 MGA Zone 50 Vertical Datum: AHD
 The information contained herein is the exclusive property of the Water Corporation and the respective copyright owners. It is subject to ongoing review and should be viewed in conjunction with the associated materials. No part of this production should be copied, modified, reproduced or published in any form other than that intended by the author.

0 200 400 metres

WATER CORPORATION
Ellenbrook Reliable Water Storage Project (C-W00179)
Figure 3 - Latitude and Longitude Coordinates for the ERWS Project (With INSET 2 and 3)

AUTHOR: JACKSON0
 GROUP: EIA & Approvals Section
 DATE: 21/01/2015
 PROJECT: ERWS Project (C-W00179)

File: S:\AA Environment Branch\Environment\Approvals\38\CW00179 and CW0128 - Ellenbrook Tanks and Inlet outlet\EPBC Act Referral\Mapping\Figure 3 Coordinates Part 1.mxd



ID	Longitude	Latitude
1	115 56 57.7	-31 44 41.9
2	115 56 57.8	-31 44 43.7
3	115 56 59.4	-31 44 48.6
4	115 56 58.5	-31 44 54.2
5	115 57 3.4	-31 44 53.9
6	115 57 3.4	-31 44 54.2
7	115 56 52.0	-31 44 54.6
8	115 56 51.6	-31 44 48.6
9	115 56 46.3	-31 44 48.6
10	115 56 45.9	-31 44 43.7
11	115 56 43.4	-31 44 44.2
12	115 56 45.6	-31 44 53.9
13	115 56 47.8	-31 45 1.8
14	115 56 54.3	-31 45 6.6
15	115 56 54.7	-31 45 3.7
16	115 56 55.6	-31 45 3.6
17	115 56 56.3	-31 45 8.6
18	115 57 2.5	-31 45 15.1
19	115 57 2.0	-31 45 34.2
20	115 57 0.9	-31 45 56.9
21	115 57 3.6	-31 46 18.0
22	115 56 56.9	-31 46 35.1
23	115 56 57.9	-31 46 36.0
24	115 56 57.6	-31 46 36.9
25	115 56 55.7	-31 46 36.9
26	115 57 2.6	-31 46 17.9
27	115 56 60.0	-31 45 56.2
28	115 57 1.1	-31 45 34.2
29	115 56 59.8	-31 45 34.2
30	115 56 59.9	-31 45 33.7
31	115 57 1.2	-31 45 33.7
32	115 57 1.6	-31 45 15.7
33	115 56 53.7	-31 45 8.6
34	115 56 50.6	-31 45 5.6
35	115 56 46.4	-31 45 7.8
36	115 56 46.2	-31 45 6.8
37	115 56 49.5	-31 45 5.0
38	115 56 48.6	-31 45 4.2
39	115 56 43.3	-31 45 3.1
40	115 56 43.6	-31 45 2.1
41	115 56 46.3	-31 45 2.1
42	115 56 43.3	-31 44 54.2
43	115 56 39.5	-31 44 54.2
44	115 56 37.6	-31 44 53.9
45	115 56 42.0	-31 44 44.2
46	115 56 44.1	-31 44 42.2
47	115 56 46.5	-31 44 41.8
48	115 56 48.5	-31 44 41.7
49	115 56 49.1	-31 44 41.8

LEGEND

- Cadastral Boundary
- Construction Footprint
- Area/ Project Area, 28.4 ha
- Project Area Coordinates

Coordinate System: GDA 1994 MGA Zone 50 Vertical Datum: AHD
The information contained herein is the exclusive property of the Water Corporation and the respective copyright owners. It is subject to ongoing review and should be viewed in conjunction with the associated materials. No part of this production should be copied, modified, reproduced or published in any form other than that intended by the author.

AUTHOR: JACKSON0 DATE: 21/01/2015

GROUP: EIA & Approvals Section PROJECT: ERWS Project (C-W00179)

WATER CORPORATION

Ellenbrook Reliable Water Storage Project (C-W00179)

Figure 4 - Latitude and Longitude Coordinates for the ERWS Project INSET 1

400,200

400,400

400,600

6,487,400

6,487,400

6,487,200

6,487,200

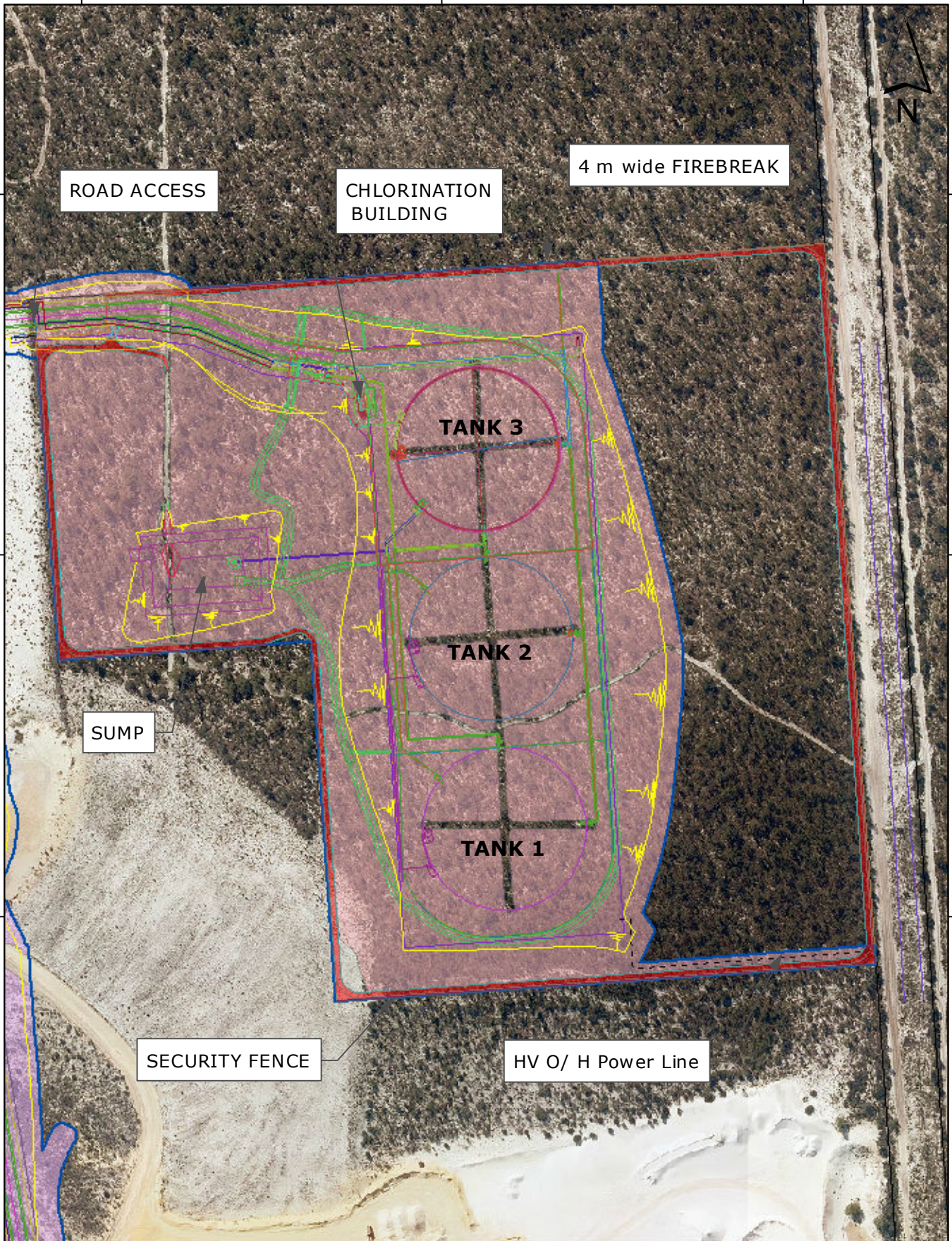
6,487,000

6,487,000

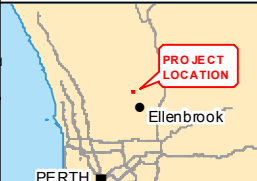
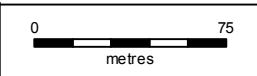
400,200

400,400

400,600



LEGEND	
	Cadastral Boundary
	Construction Footprint Area/ Project Area, 28.4 ha
	Outlet Pipe
	Inlet Pipe
	Batters
Proposed Clearing, 16.5 ha	
Vegetation Type	
	Bankia Low Open Forest
	Isolated Tree
	Pine Plantation
	Pine, Melaleuca and Eucalyptus Open Planted Woodland
	Revegetation



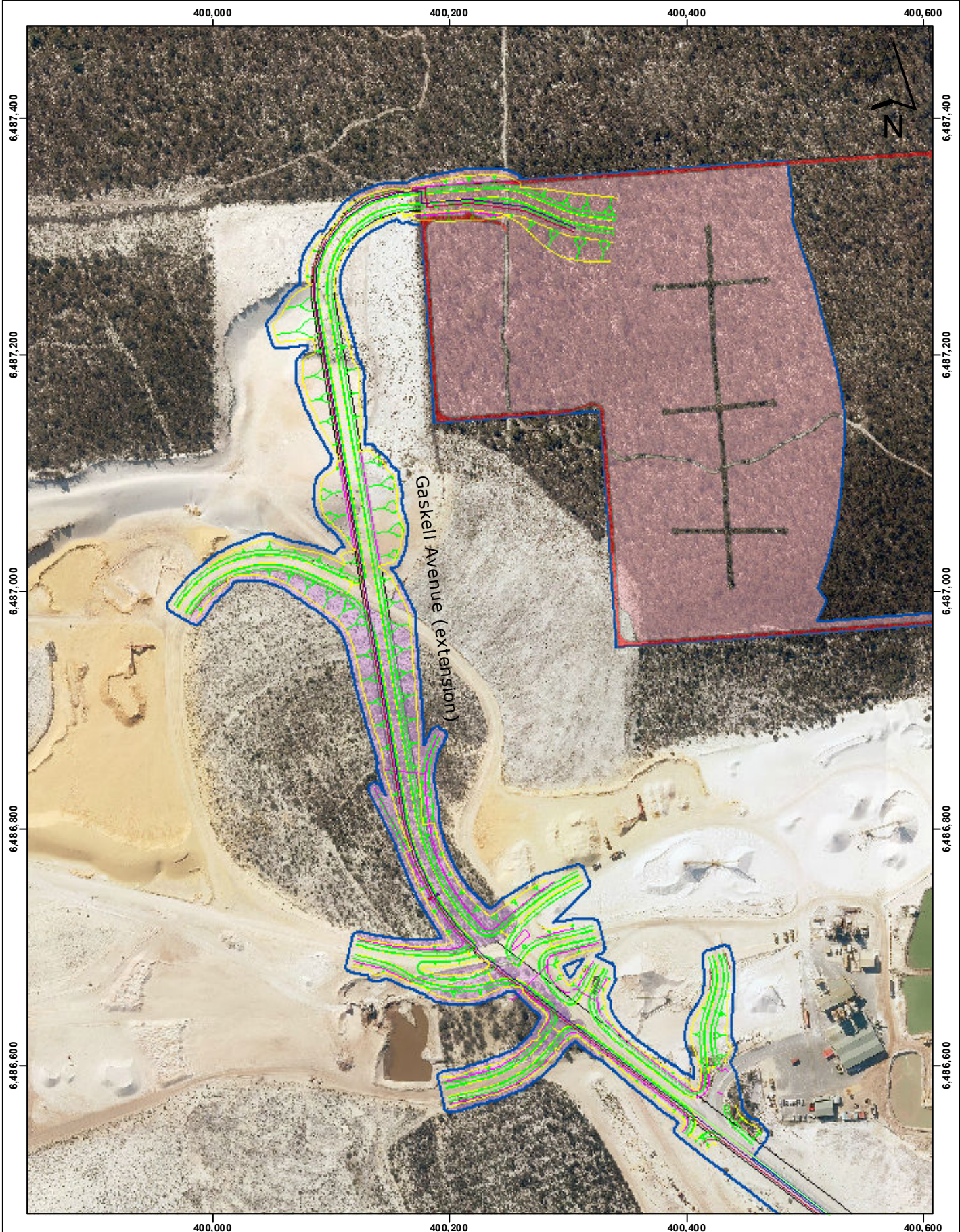
AUTHOR: JACKSON0	DATE: 21/01/2015
GROUP: EIA & Approvals Section	PROJECT: ERWS Project (C-W00179)

WATER CORPORATION

Ellenbrook Reliable Water Storage Project (C-W00179)

Figure 5 - Proposed Clearing and Infrastructure Layout (TANK SITE)

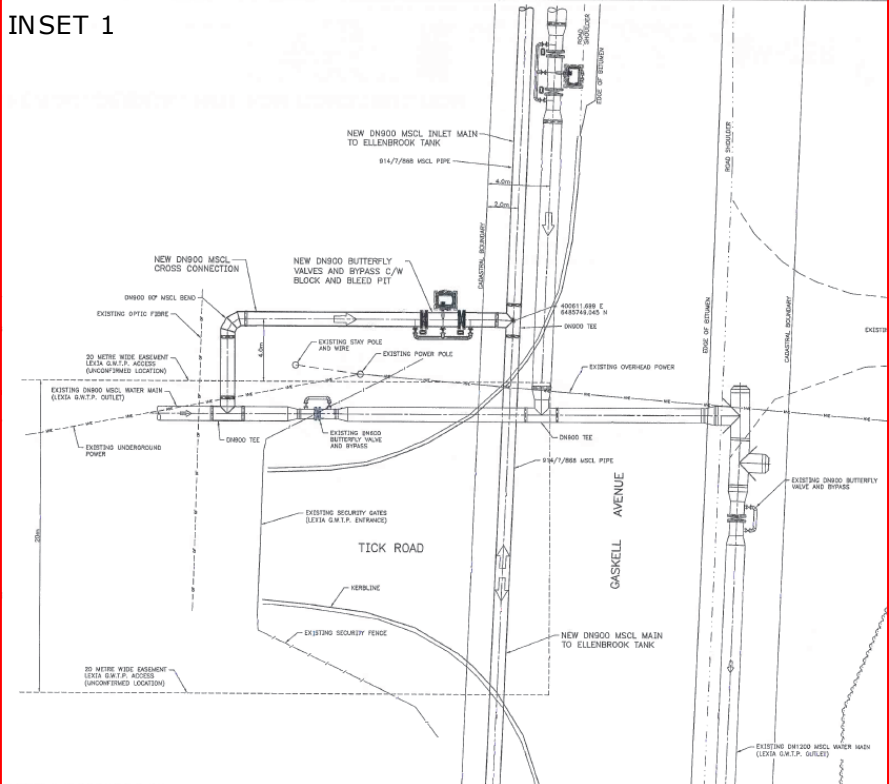
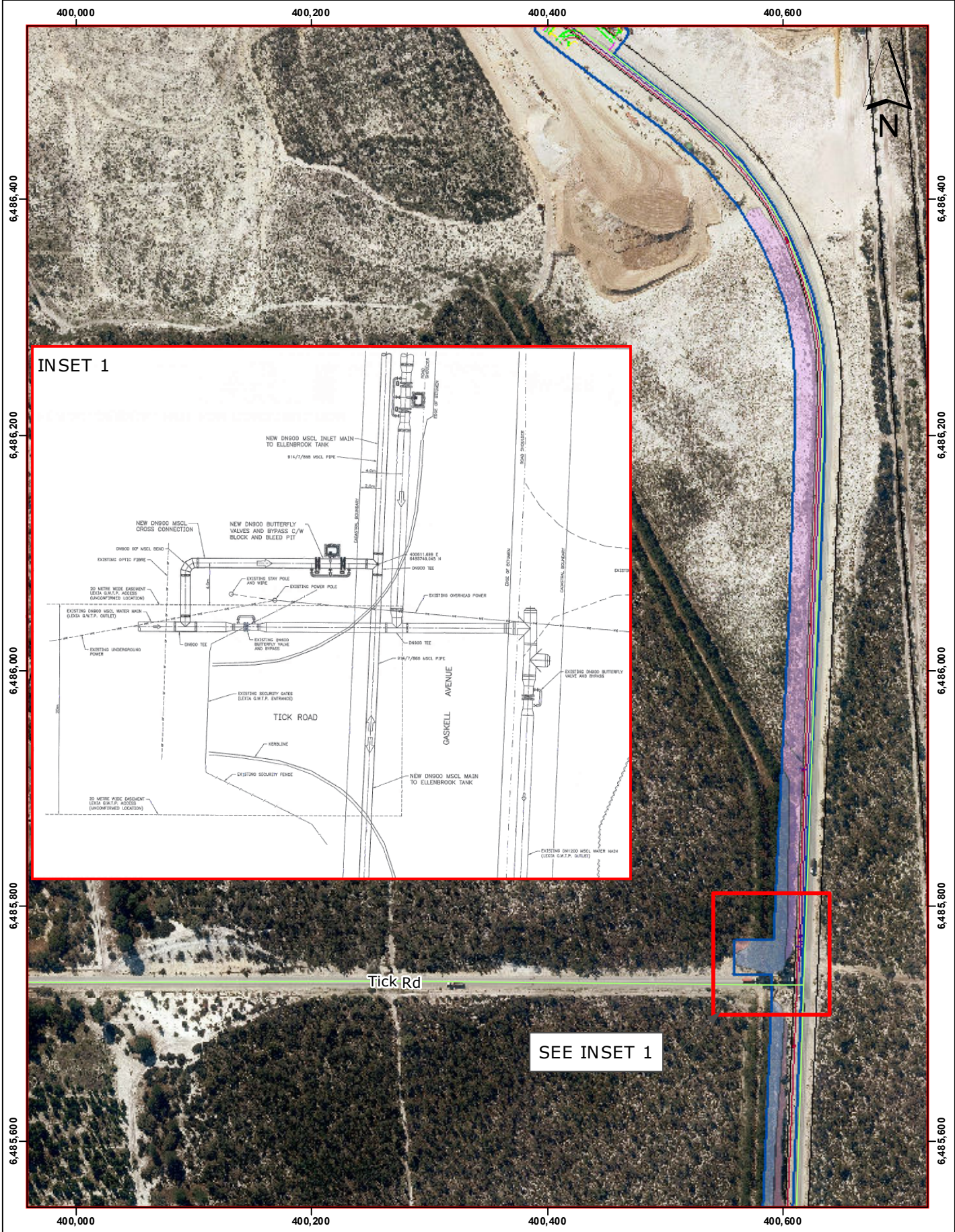
Coordinate System: GDA 1994 MGA Zone 50 Vertical Datum: AHD
 The information contained herein is the exclusive property of the Water Corporation and the respective copyright owners. It is subject to ongoing review and should be viewed in conjunction with the associated materials. No part of this production should be copied, modified, reproduced or published in any form other than that intended by the author.



LEGEND Cadastral Boundary Construction Footprint Area/Project Area, 28.4 ha Outlet Pipe Inlet Pipe Road Design Batters	Proposed Clearing, 16.5 ha Vegetation Type Banksia Low Open Forest Isolated Tree Pine Plantation Pine, Melaleuca and Eucalyptus Open Planted Woodland Revegetation	0 75 metres	AUTHOR: JACKSON0 GROUP: EIA & Approvals Section	DATE: 21/01/2015 PROJECT: ERWS Project (C-W00179)
			 Ellenbrook Reliable Water Storage Project (C-W00179) Figure 6 - Proposed Clearing and Infrastructure Layout (GASKELL AVE EXTENSION)	

Coordinate System: GDA 1994 MGA Zone 50 Vertical Datum: AHD
 The information contained herein is the exclusive property of the Water Corporation and the respective copyright owners. It is subject to ongoing review and should be viewed in conjunction with the associated materials. No part of this production should be copied, modified, reproduced or published in any form other than that intended by the author.

File: S:\AA AEnvironment Branch\Environment\Approvals\38\CW00179 and CW00128 - Ellenbrook Tanks and Inlet outlet\EPBC Act Referral\Mapping\Figure 6 Gaskell Ave ext Proposed Veg Clearing.mxd

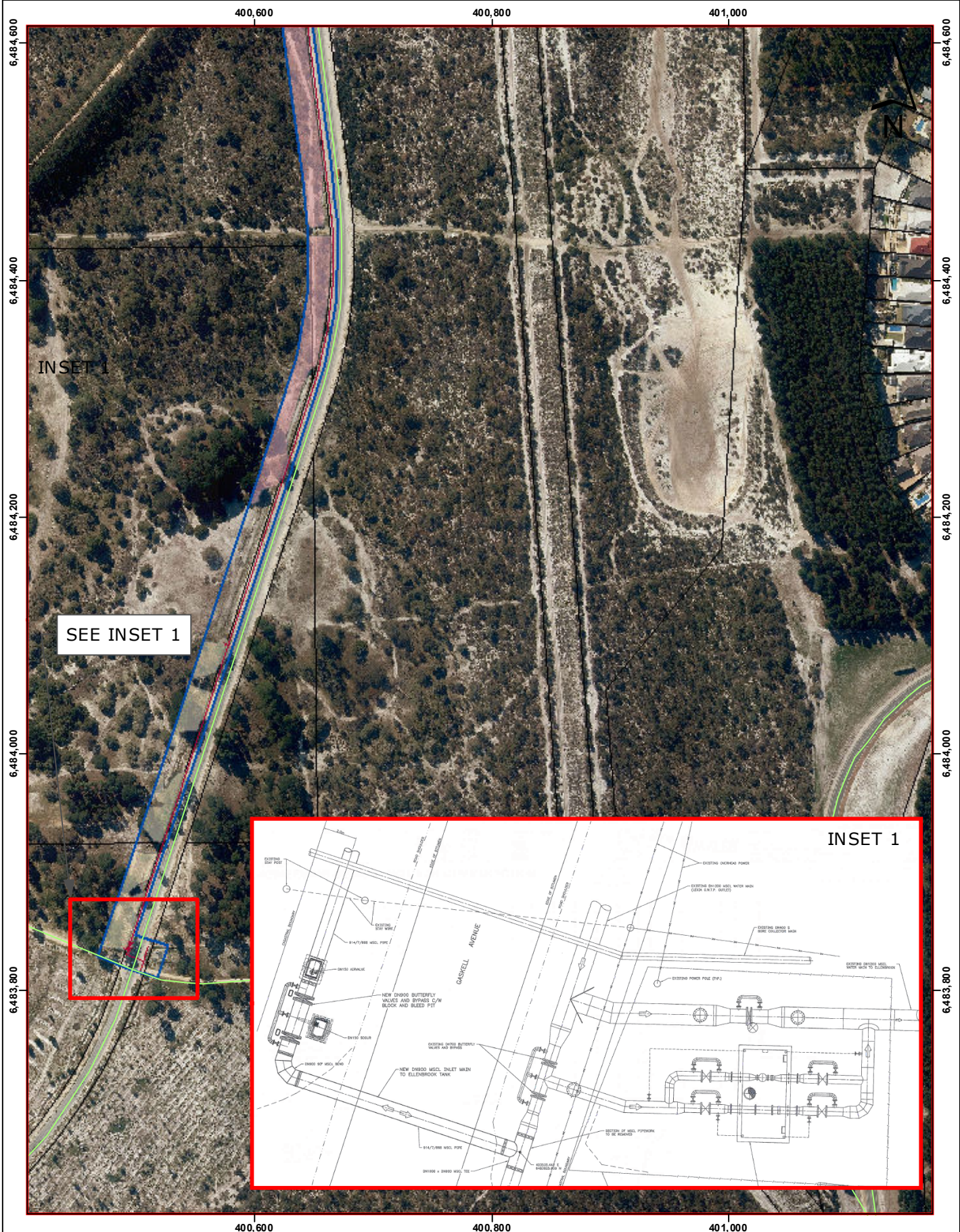


SEE INSET 1

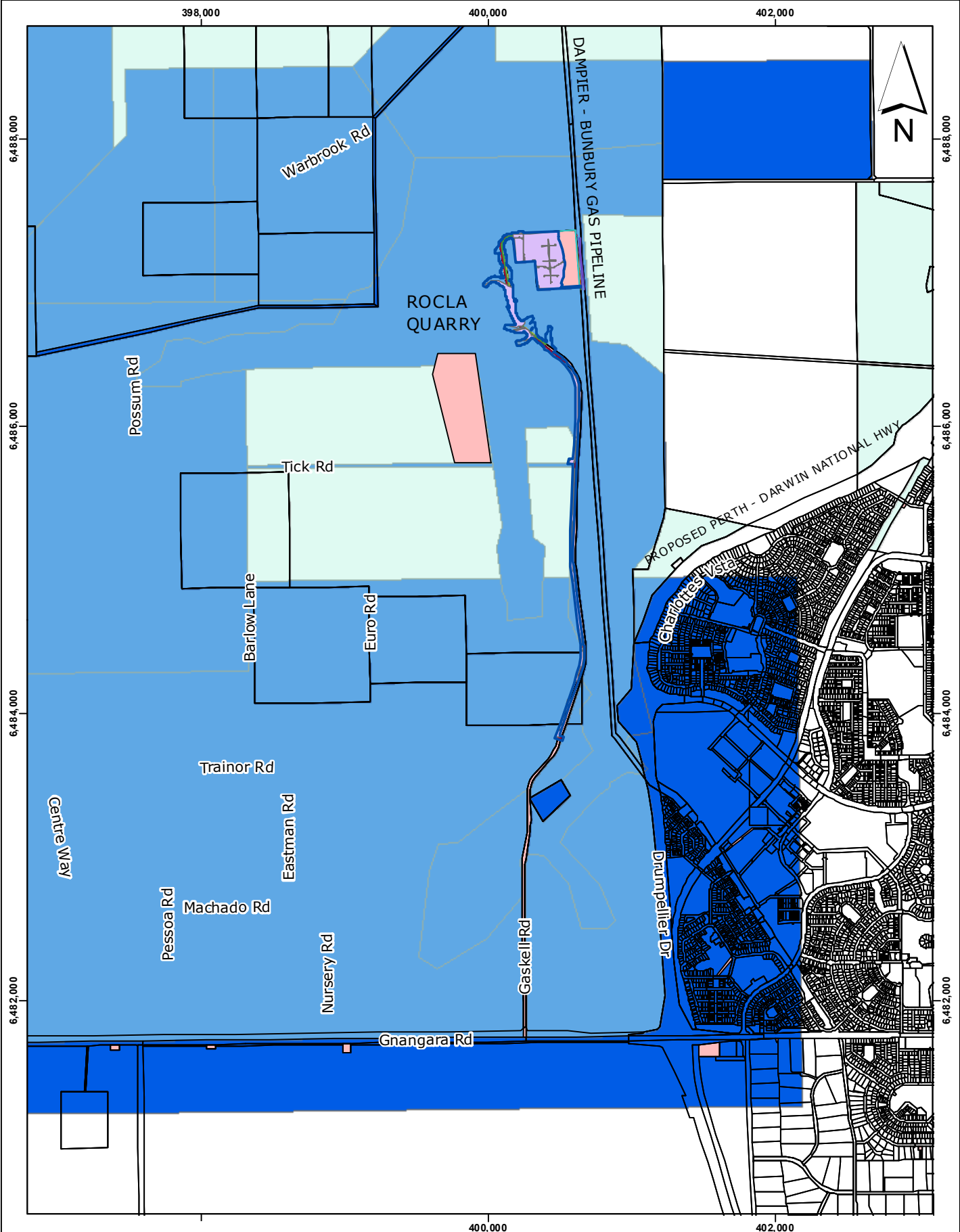
<p>LEGEND</p> <p>— Cadastral Boundary</p> <p>Construction Footprint Area/Project Area, 28.4 ha</p> <p>— Outlet Pipe</p> <p>— Inlet Pipe</p>		<p>Proposed Clearing, 16.5 ha</p> <p>Vegetation Type</p> <p>Bankia Low Open Forest</p> <p>Isolated Tree</p> <p>Pine Plantation</p> <p>Pine, Melaleuca and Eucalyptus Open Planted Woodland</p> <p>Revegetation</p>		<p>0 75 metres</p> <p>PROJECT LOCATION</p> <p>Ellenbrook</p> <p>PERTH</p>		<p>AUTHOR: JACKSON0</p> <p>GROUP: EIA & Approvals Section</p> <p>WATER CORPORATION</p> <p>Ellenbrook Reliable Water Storage Project (C-W00179)</p> <p>Figure 7 - Proposed Clearing and Infrastructure Layout</p>		<p>DATE: 21/01/2015</p> <p>PROJECT: ERWS Project (C-W00179)</p>	
<p>Coordinate System: GDA 1994 MGA Zone 50 Vertical Datum: AHD</p> <p>The information contained herein is the exclusive property of the Water Corporation and the respective copyright owners. It is subject to ongoing review and should be viewed in conjunction with the associated materials. No part of this production should be copied, modified, reproduced or published in any form other than that intended by the author.</p> <p>File: S:\AA AEnvironment Branch\Environment\Approvals\38\CW00179 and CW0128 - Ellenbrook Tanks and Inlet outlet\EPBC Act Referral\Mapping\Figure 7 Tick Road tie in Proposed Veg Clearing.mxd</p>									



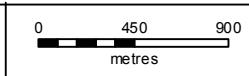
LEGEND Cadastral Boundary Construction Footprint Area/ Project Area, 28.4 ha Inlet Pipe	Proposed Clearing, 16.5 ha Vegetation Type Bankia Low Open Forest Isolated Tree Pine Plantation Pine, Melaleuca and Eucalyptus Open Planted Woodland Revegetation	 	AUTHOR: JACKSON0	DATE: 21/01/2015
			GROUP: EIA & Approvals Section	PROJECT: ERWS Project (C-W00179)
<p>Coordinate System: GDA 1994 MGA Zone 50 Vertical Datum: AHD The information contained herein is the exclusive property of the Water Corporation and the respective copyright owners. It is subject to ongoing review and should be viewed in conjunction with the associated materials. No part of this production should be copied, modified, reproduced or published in any form other than that intended by the author.</p>		 Ellenbrook Reliable Water Storage Project (C-W00179) Figure 8 - Proposed Clearing and Infrastructure Layout		



LEGEND Cadastral Boundary Construction Footprint Area/Project Area, 28.4 ha Inlet Pipe		Proposed Clearing, 16.5 ha Vegetation Type Bankia Low Open Forest Isolated Tree Pine Plantation Pine, Melaleuca and Eucalyptus Open Planted Woodland Revegetation		0 75 metres 		AUTHOR: JACKSON0 GROUP: EIA & Approvals Section 		DATE: 21/01/2015 PROJECT: ERWS Project (C-W00179)	
Coordinate System: GDA 1994 MGA Zone 50 Vertical Datum: AHD The information contained herein is the exclusive property of the Water Corporation and the respective copyright owners. It is subject to ongoing review and should be viewed in conjunction with the associated materials. No part of this production should be copied, modified, reproduced or published in any form other than that intended by the author.				Ellenbrook Reliable Water Storage Project (C-W00179) Figure 9 - Proposed Clearing and Infrastructure Layout					



- Legend**
- Construction Footprint Area/ Project Area, 28.4 ha
 - Proposed Clearing, 16.5 ha
 - WC LandMatters
 - DEC Managed Lands/Waters
 - Tenements

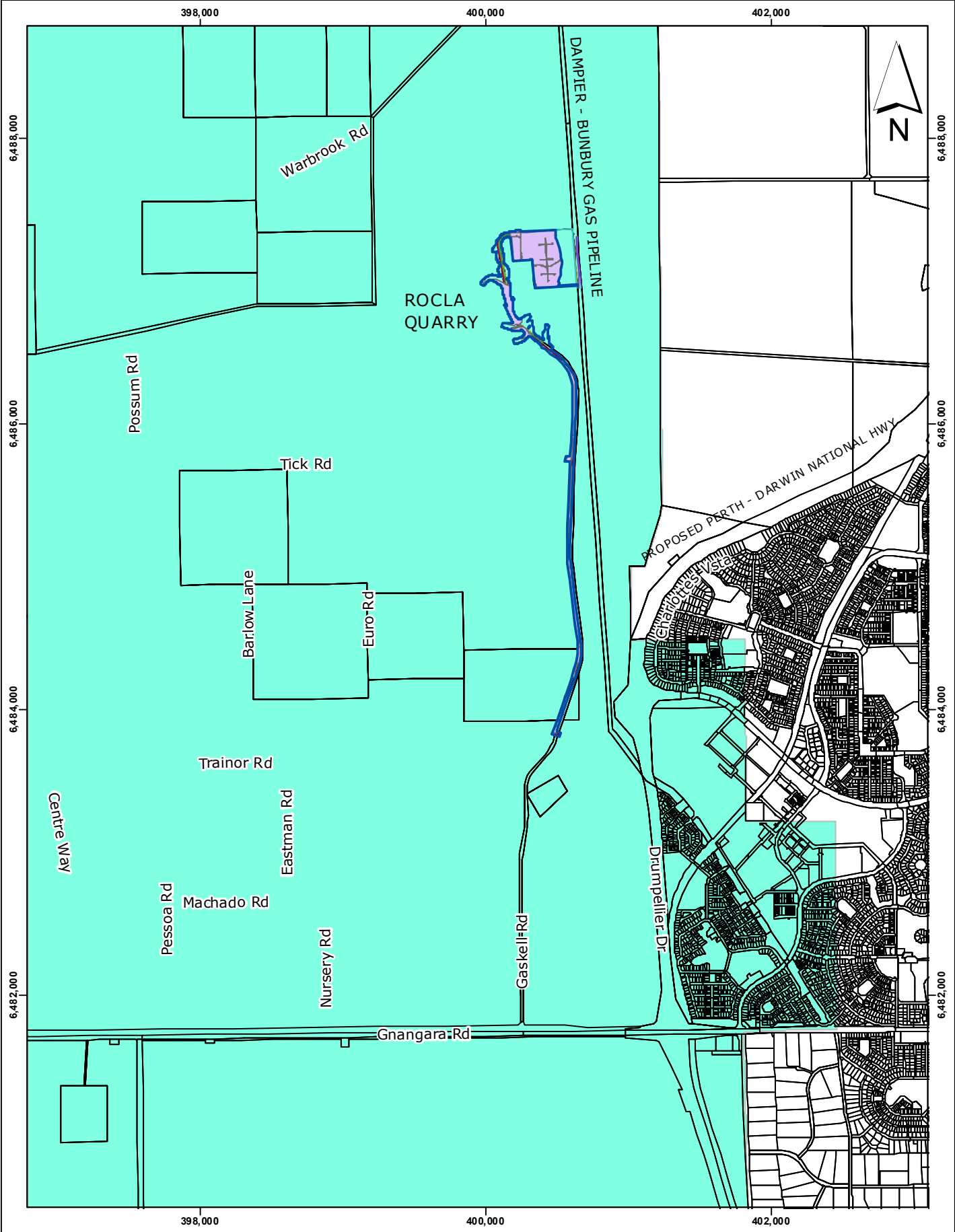


AUTHOR: JACKSON0	DATE: 21/01/2015
GROUP: EIA & Approvals Section	PROJECT: ERWS Project (C-W00179)


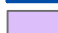
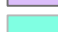


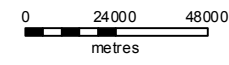
Ellenbrook Reliable Water Storage Project (C-W00179)
Figure 10 - Surrounding Land

Coordinate System: GDA 1994 MGA Zone 50 Vertical Datum: AHD
 The information contained herein is the exclusive property of the Water Corporation and the respective copyright owners. It is subject to ongoing review and should be viewed in conjunction with the associated materials. No part of this production should be copied, modified, reproduced or published in any form other than that intended by the author.



Legend

-  Construction Footprint Area/ Project Area, 28.4 ha
-  Proposed Clearing, 16.5 ha
-  Gngangara Mound Policy Boundary

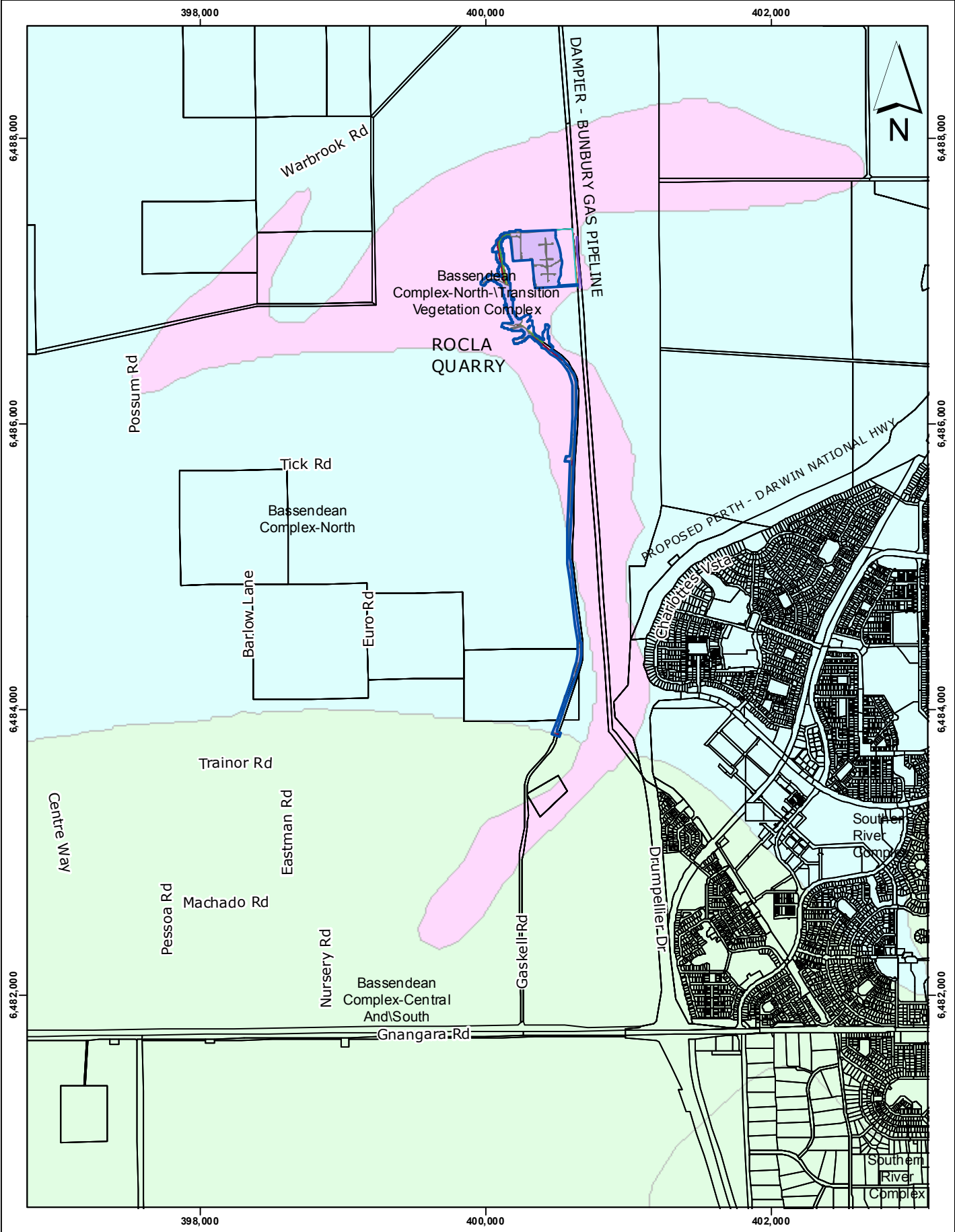


AUTHOR: JACKSON0	DATE: 21/01/2015
GROUP: EIA & Approvals Section	PROJECT: ERWS Project (C-W00179)

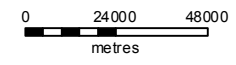


Ellenbrook Reliable Water Storage Project (C-W00179)
Figure 11 - Gngangara Mound EPP Area

Coordinate System: GDA 1994 MGA Zone 50 Vertical Datum: AHD
 The information contained herein is the exclusive property of the Water Corporation and the respective copyright owners. It is subject to ongoing review and should be viewed in conjunction with the associated materials. No part of this production should be copied, modified, reproduced or published in any form other than that intended by the author.



- Legend**
- Construction Footprint Area/ Project Area, 28.4 ha
 - Proposed Clearing, 16.5 ha
 - <all other values>
- VEG TYPE**
- Bassendeen Complex-North
 - Bassendeen Complex-North+Transition Vegetation Complex

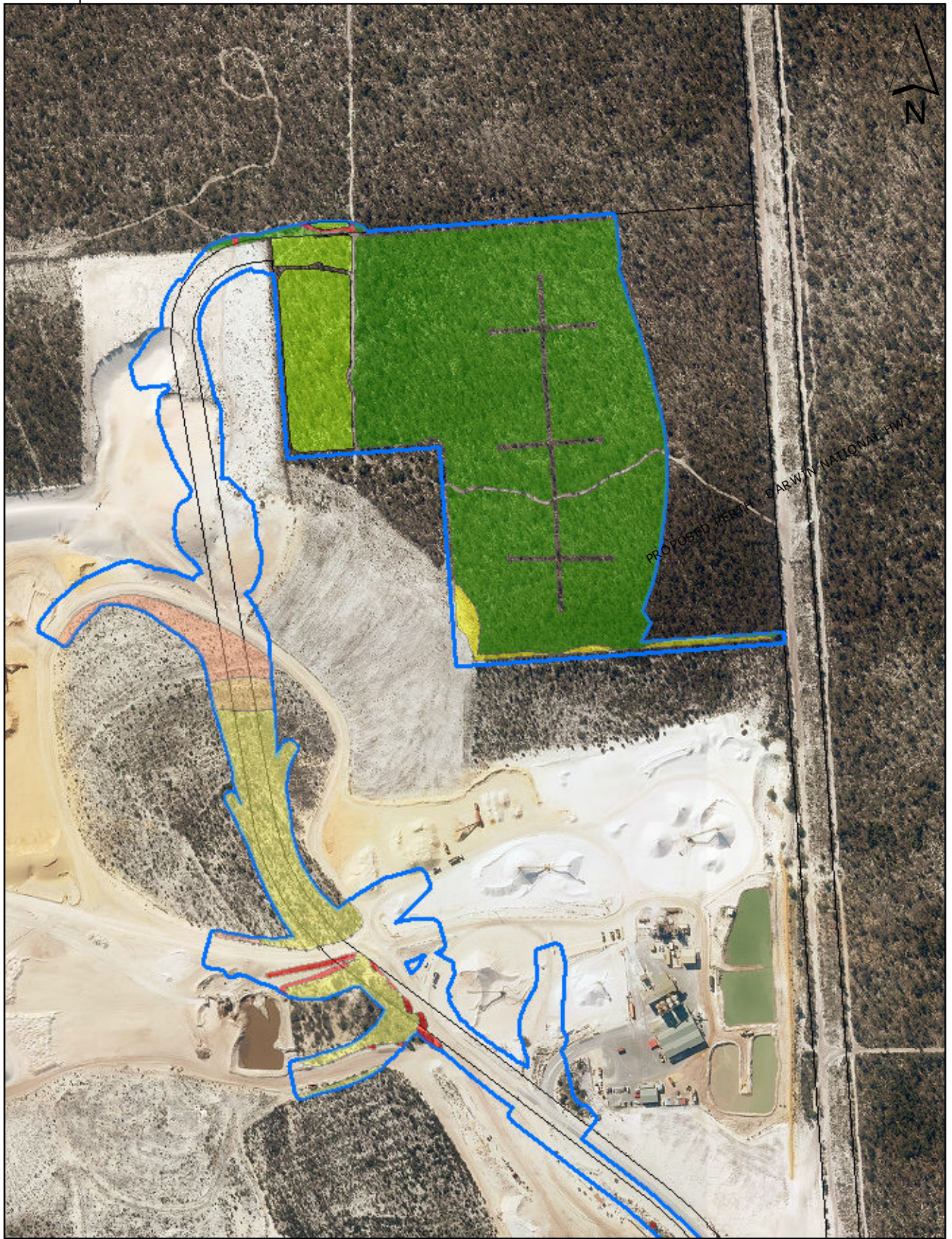


AUTHOR: JACKSON0	DATE: 21/01/2015
GROUP: EIA & Approvals Section	PROJECT: ERWS Project (C-W00179)



Ellenbrook Reliable Water Storage Project (C-W00179)
Figure 12 - Vegetation Complexes

Coordinate System: GDA 1994 MGA Zone 50 Vertical Datum: AHD
 The information contained herein is the exclusive property of the Water Corporation and the respective copyright owners. It is subject to ongoing review and should be viewed in conjunction with the associated materials. No part of this production should be copied, modified, reproduced or published in any form other than that intended by the author.



Legend

Condition

- 1-2: Pristine to Excellent
- 3: Excellent
- 3-4: Excellent to Very Good
- 4: Good
- 4-5: Good to Degraded
- 5: Degraded
- 5-6: Degraded to Completely Degraded
- 6: Completely Degraded

Construction Footprint Area / Project Area.

29.2 m
Coordinate System: GDA 1994 MGA Zone 50 Vertical Datum: AHD

The information contained herein is the exclusive property of the Water Corporation and the respective copyright owners. It is subject to ongoing review and should be viewed in conjunction with the associated materials. No part of this production should be copied, modified, reproduced or published in any form other than that intended by the author.

0 50 100
metres

PERTH

PROJECT LOCATION

Ellenbrook

AUTHOR: JACKSON0
GROUP: EIA & Approvals Section

DATE: 19/01/2015
PROJECT: ERWS Project (C-W 00179)



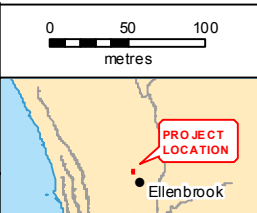
Ellenbrook Reliable Water Storage Project (C-W00179)
Figure 13 - Vegetation Condition



Legend

Condition
1-2: Pristine to Excellent
3: Excellent
4: Good
5: Degraded
6: Completely Degraded
Construction Footprint Area/ Project Area

Coordinate System: GDA 1994 MGA Zone 50 Vertical Datum: AHD
 The information contained herein is the exclusive property of the Water Corporation and the respective copyright owners. It is subject to ongoing review and should be viewed in conjunction with the associated materials. No part of this production should be copied, modified, reproduced or published in any form other than that intended by the author.



AUTHOR: JACKSON0	DATE: 19/01/2015
GROUP: EIA & Approvals Section	PROJECT: ERWS Project (C-W 00179)



Ellenbrook Reliable Water Storage Project (C-W00179)
Figure 14 - Vegetation Condition

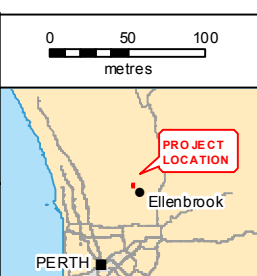


PROPOSED PERTH - DARWIN NATIONAL HWY



Legend	
Condition	
1-2: Pristine to Excellent	
3: Excellent	
3-4: Excellent to Very Good	
4: Good	
4-5: Good to Degraded	
5: Degraded	
5-6: Degraded to Completely Degraded	
6: Completely Degraded	
	Construction Footprint Area/ Project Area.

29/2/19
 Coordinate System: GDA 1994 MGA Zone 50 Vertical Datum: AHD
 The information contained herein is the exclusive property of the Water Corporation and the respective copyright owners. It is subject to ongoing review and should be viewed in conjunction with the associated materials. No part of this production should be copied, modified, reproduced or published in any form other than that intended by the author.



AUTHOR: JACKSON0	DATE: 19/01/2015
GROUP: EIA & Approvals Section	PROJECT: ERWS Project (C-W00179)
Ellenbrook Reliable Water Storage Project (C-W00179) Figure 15 - Vegetation Condition	



6,484,000

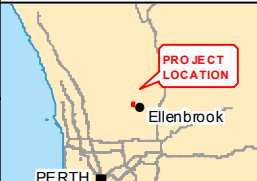
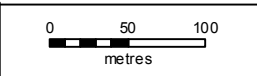
6,484,000

Legend

Condition

- 1-2: Pristine to Excellent
- 3: Excellent
- 3-4: Excellent to Very Good
- 4: Good
- 4-5: Good to Degraded
- 5: Degraded
- 5-6: Degraded to Completely Degraded
- 6: Completely Degraded

Construction Footprint Area / Project Area

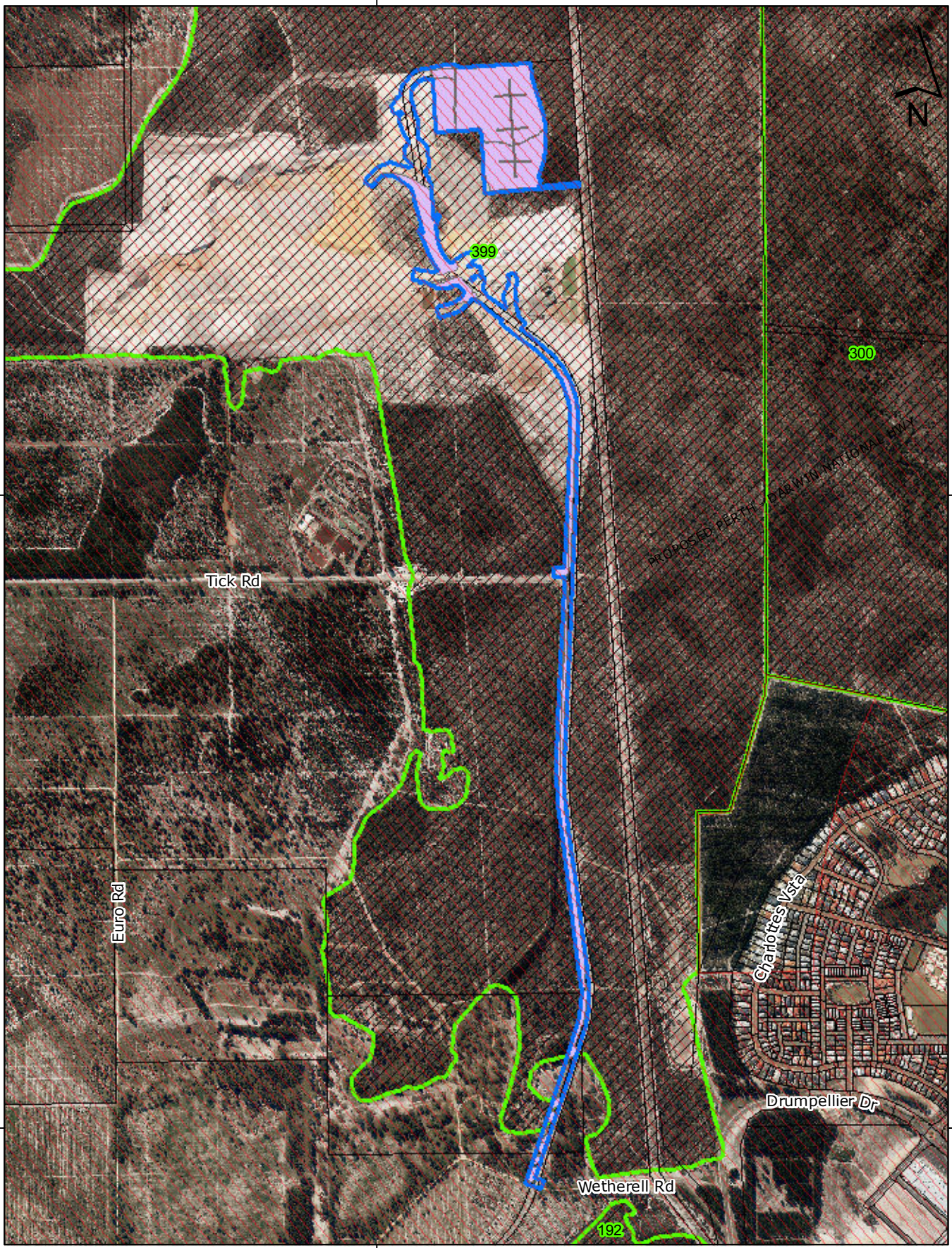


AUTHOR: JACKSON0	DATE: 19/01/2015
GROUP: EIA & Approvals Section	PROJECT: ERWS Project (C-W00179)



Ellenbrook Reliable Water Storage Project (C-W00179)
Figure 16 - Vegetation Condition

400,000



Tick Rd

Euro Rd

Wetherell Rd

Charities Vista





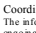
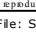
Drumpellier Dr

399

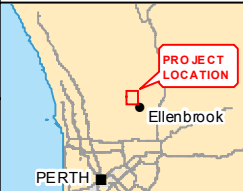
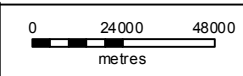
300

192

400,000

- Legend**
-  ESA
 -  Construction Footprint Area/
Project Area, 24.8 ha
 -  Proposed Clearing, 16.5 ha
 -  Bush Forever
 -  Bush Forever Proposed
 -  Nominated Additional Areas

Coordinate System: GDA 1994 MGA Zone 50 Vertical Datum: AHD
 The information contained herein is the exclusive property of the Water Corporation and the respective copyright owners. It is subject to ongoing review and should be viewed in conjunction with the associated materials. No part of this production should be copied, modified, reproduced or published in any form other than that intended by the author.

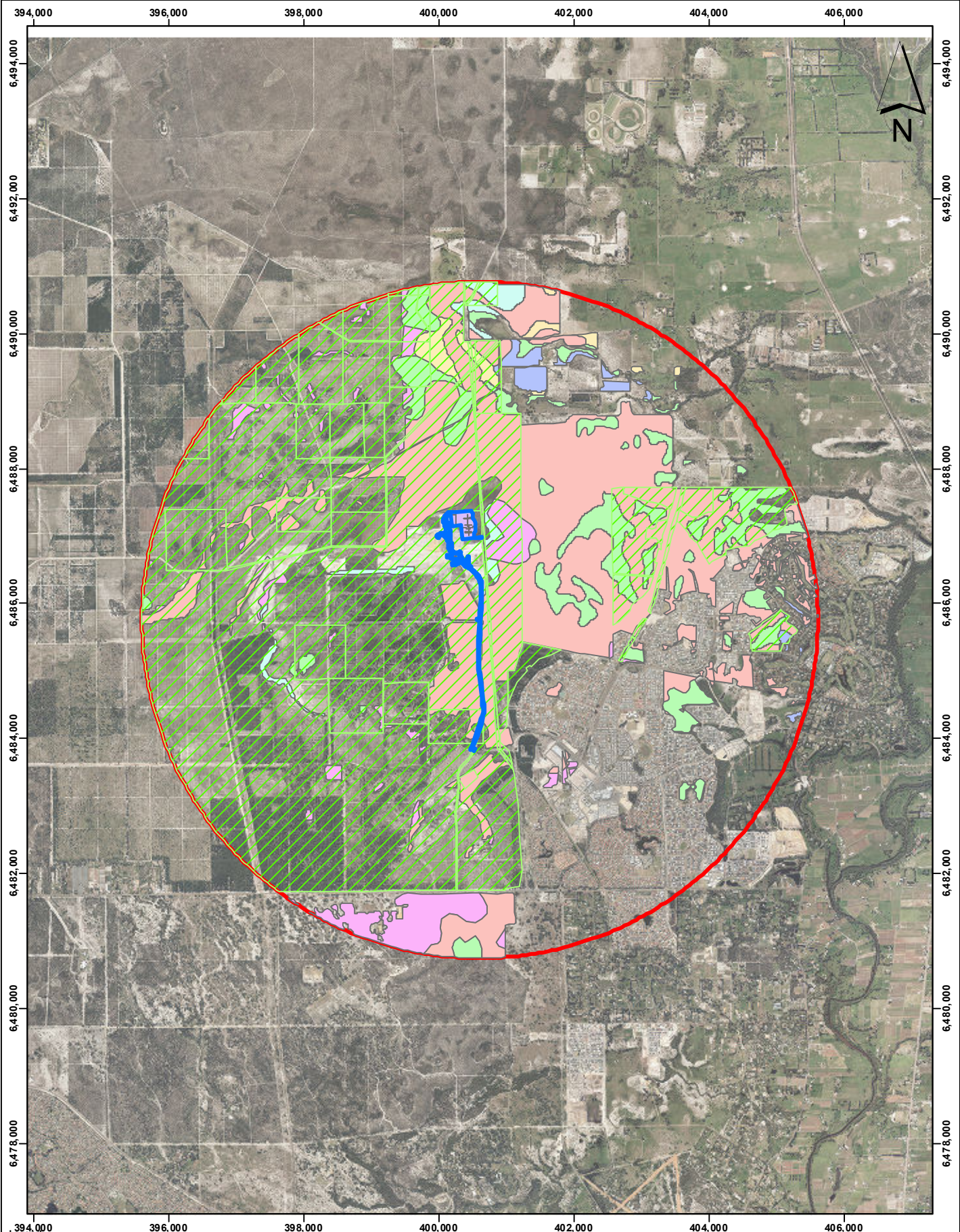


AUTHOR: JACKSON0
 GROUP: EIA & Approvals Section

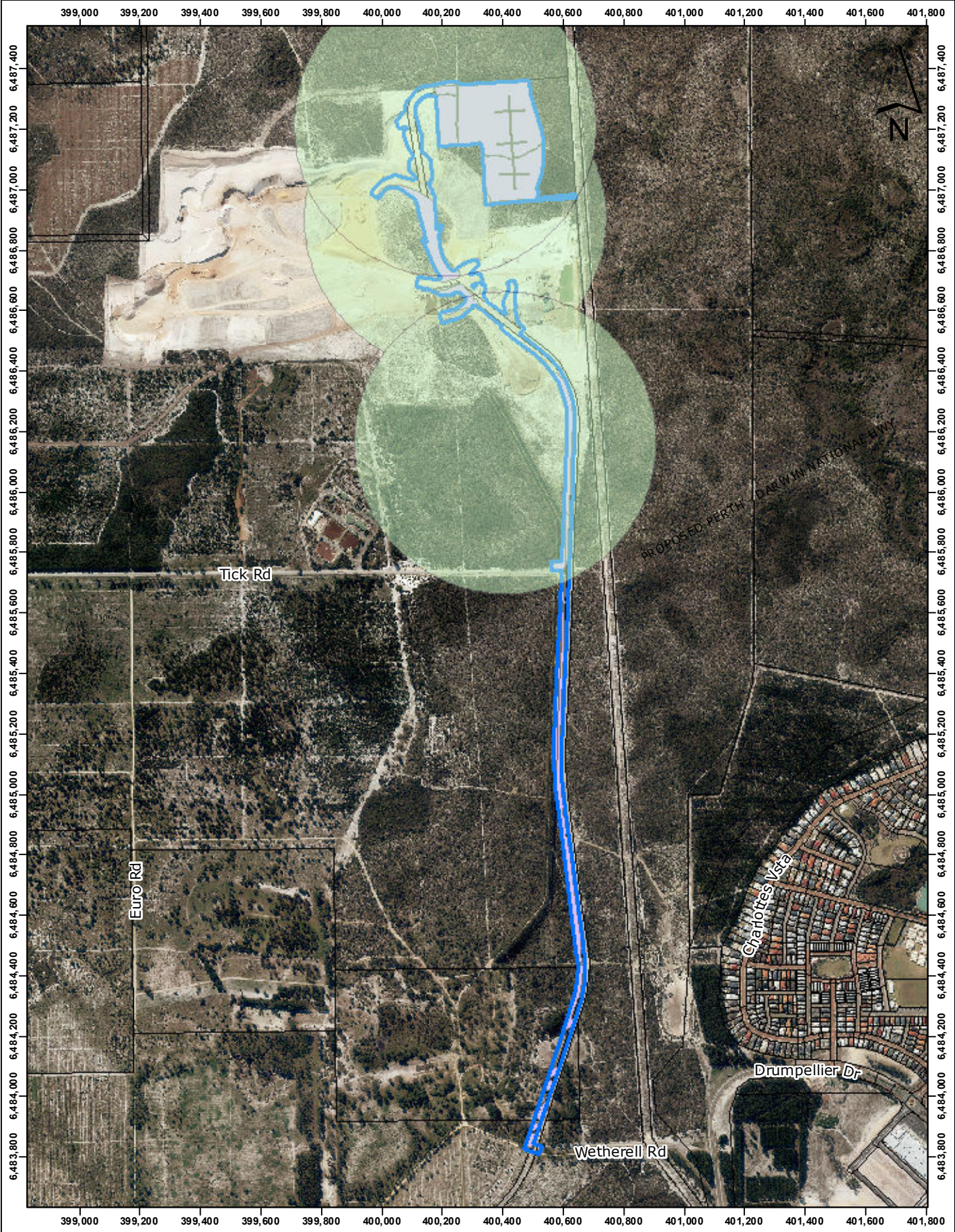
DATE: 21/01/2015
 PROJECT: ERWS Project (C-W00179)



Ellenbrook Reliable Water Storage Project (C-W00179)
Figure 17 - Bush Forever Areas and ESAs



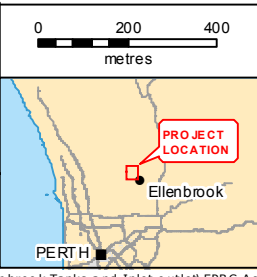
<p>Legend</p> <ul style="list-style-type: none"> Construction Footprint/Amal Project Area. Proposed Clearing, 16.5 ha 5 km state forest <p>VEGNAME</p> <ul style="list-style-type: none"> Bassendean Complex-North Bassendean Gavin Phase Bassendean Jandakot Phase Bassendean Joel Phase Yanga 14x Phase Yanga 8 Subsystem <p> 5 km Buffer State System: GDA 1994 MGA Zone 50 Vertical Datum: AHD</p> <p><small>The information contained herein is the exclusive property of the Water Corporation and the respective copyright owners. It is subject to ongoing review and should be viewed in conjunction with the associated materials. No part of this production should be copied, modified, reproduced or published in any form other than that intended by the author.</small></p>	<p>0 24000 48000 metres</p> <p>PERTH</p>	<p>AUTHOR: JACKSON0 GROUP: EIA & Approvals Section</p>	<p>DATE: 21/01/2015 PROJECT: ERWS Project (C-W00179)</p>
<p>Water Corporation</p> <p>Ellenbrook Reliable Water Storage Project (C-W00179)</p> <p>Figure 18 - Black Cockatoo Habitat and State Forest (WITHIN 5 km BUFFER)</p>		<p>PROJECT LOCATION</p> <p>Ellenbrook</p>	



Legend

- PECs
- Construction Footprint Area/ Project Area, 24.8 ha
- Proposed Clearing, 16.5 ha

Coordinate System: GDA 1994 MGA Zone 50 Vertical Datum: AHD
The information contained herein is the exclusive property of the Water Corporation and therefore copyright owners. It is subject to ongoing review and should be viewed in conjunction with the associated materials. No part of this production should be copied, modified, reproduced or published in any form other than that intended by the author.



<small>AUTHOR: JACKSON0</small>	<small>DATE: 4/03/2015</small>
<small>GROUP: EIA & Approvals Section</small>	<small>PROJECT: ERWS Project (C-W00179)</small>

WATER CORPORATION

Ellensbrook Reliable Water Storage Project (C-W00179)
Figure 19 - PECs