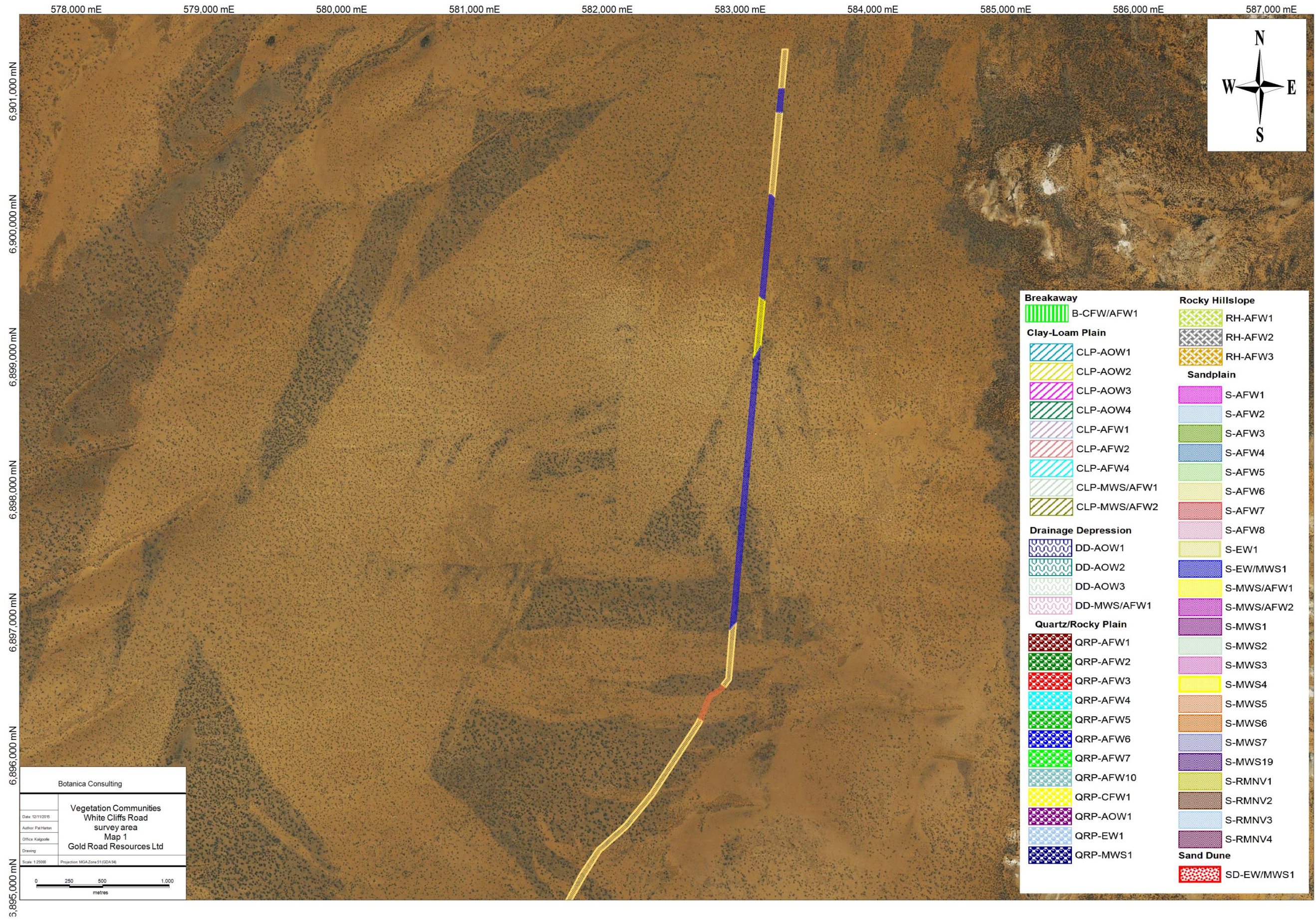


White Cliffs Survey Area



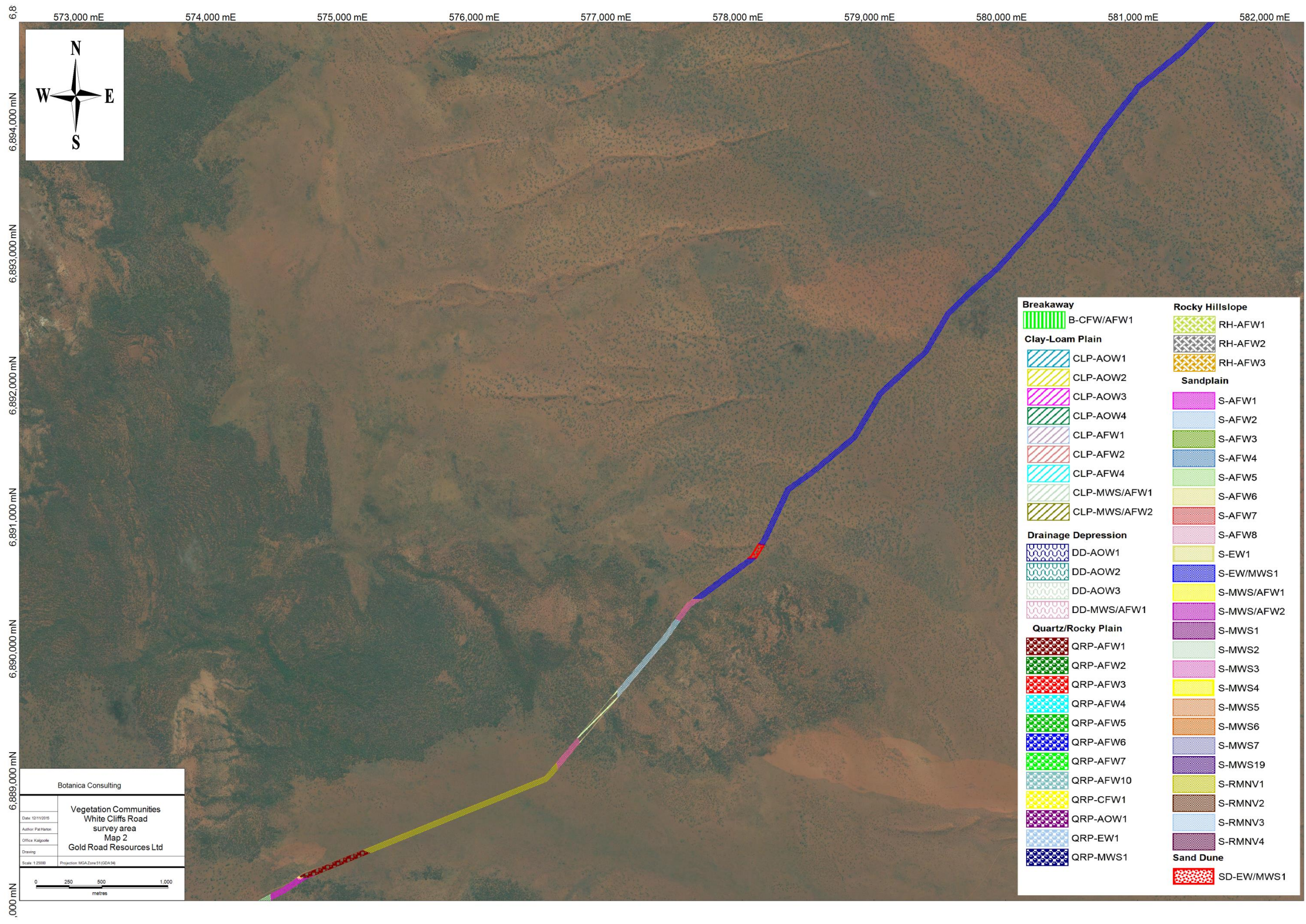
Breakaway	B-CFW/AFW1	Rocky Hillslope	RH-AFW1
Clay-Loam Plain	CLP-AOW1	RH-AFW2	RH-AFW3
	CLP-AOW2	Sandplain	S-AFW1
	CLP-AOW3		S-AFW2
	CLP-AOW4		S-AFW3
	CLP-AFW1		S-AFW4
	CLP-AFW2		S-AFW5
	CLP-AFW4		S-AFW6
	CLP-MWS/AFW1		S-AFW7
	CLP-MWS/AFW2		S-AFW8
Drainage Depression	DD-AOW1		S-EW1
	DD-AOW2		S-EW/MWS1
	DD-AOW3		S-MWS/AFW1
	DD-MWS/AFW1		S-MWS/AFW2
Quartz/Rocky Plain	QRP-AFW1		S-MWS1
	QRP-AFW2		S-MWS2
	QRP-AFW3		S-MWS3
	QRP-AFW4		S-MWS4
	QRP-AFW5		S-MWS5
	QRP-AFW6		S-MWS6
	QRP-AFW7		S-MWS7
	QRP-AFW10		S-MWS19
	QRP-CFW1		S-RMNV1
	QRP-AOW1		S-RMNV2
	QRP-EW1		S-RMNV3
	QRP-MWS1		S-RMNV4
		Sand Dune	SD-EW/MWS1

Botanica Consulting

**Vegetation Communities
White Cliffs Road
survey area
Map 1**

Gold Road Resources Ltd

Date: 10/11/2015
 Author: Pat Harlan
 Office: Kalgoorlie
 Drawing:
 Scale: 1:2000 Projection: MGA Zone 51 (GDA 96)



573,000 mE 574,000 mE 575,000 mE 576,000 mE 577,000 mE 578,000 mE 579,000 mE 580,000 mE 581,000 mE 582,000 mE

6,894,000 mN
6,893,000 mN
6,892,000 mN
6,891,000 mN
6,890,000 mN
6,889,000 mN
6,888,000 mN

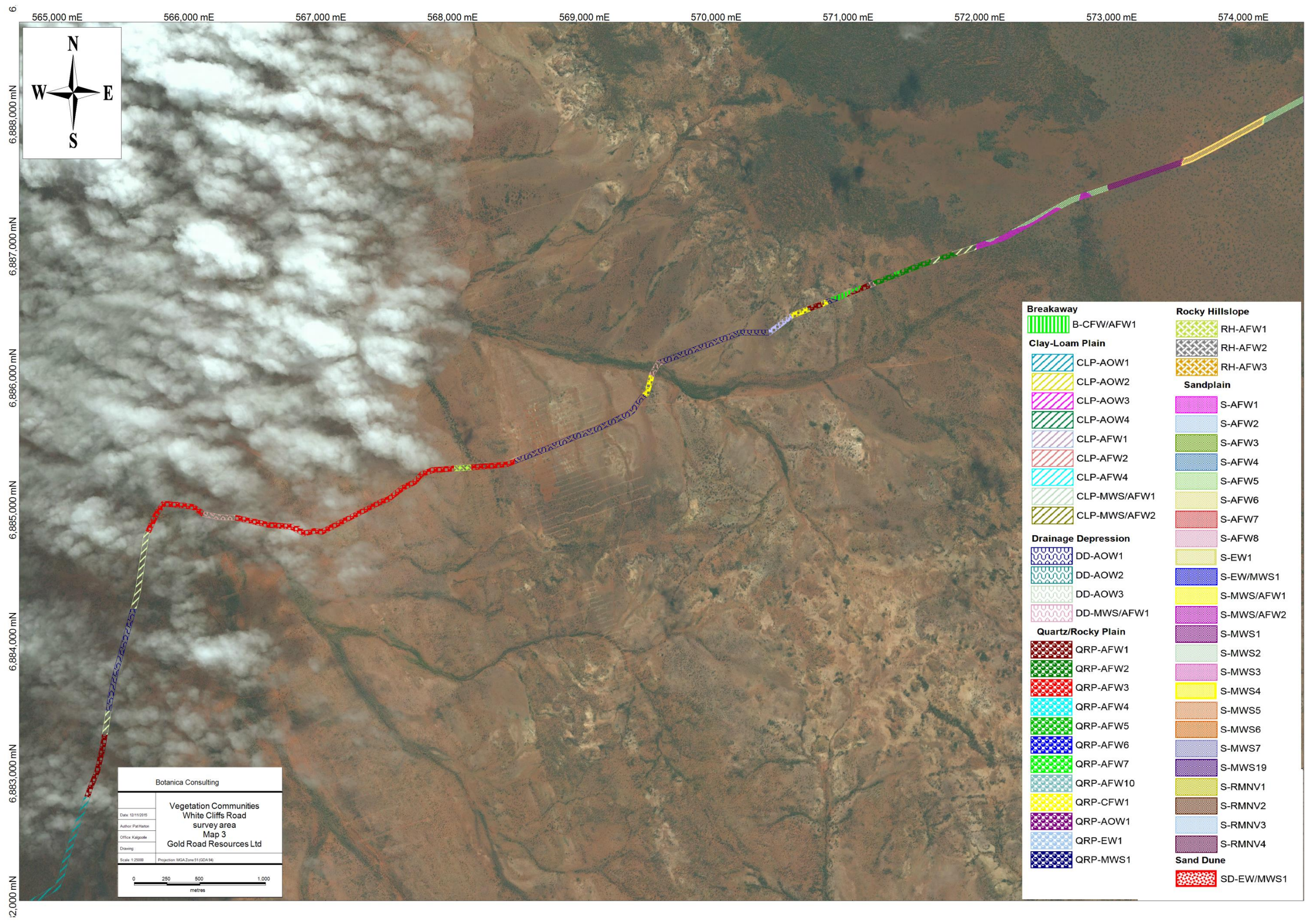


Breakaway	B-CFW/AFW1	Rocky Hillslope	RH-AFW1
Clay-Loam Plain	CLP-AOW1	RH-AFW2	RH-AFW3
	CLP-AOW2	Sandplain	S-AFW1
	CLP-AOW3		S-AFW2
	CLP-AOW4		S-AFW3
	CLP-AFW1		S-AFW4
	CLP-AFW2		S-AFW5
	CLP-AFW4		S-AFW6
	CLP-MWS/AFW1		S-AFW7
	CLP-MWS/AFW2		S-AFW8
Drainage Depression	DD-AOW1		S-EW1
	DD-AOW2		S-EW/MWS1
	DD-AOW3		S-MWS/AFW1
	DD-MWS/AFW1		S-MWS/AFW2
Quartz/Rocky Plain	QRP-AFW1		S-MWS1
	QRP-AFW2		S-MWS2
	QRP-AFW3		S-MWS3
	QRP-AFW4		S-MWS4
	QRP-AFW5		S-MWS5
	QRP-AFW6		S-MWS6
	QRP-AFW7		S-MWS7
	QRP-AFW10		S-MWS19
	QRP-CFW1		S-RMNV1
	QRP-AOW1		S-RMNV2
	QRP-EW1		S-RMNV3
	QRP-MWS1		S-RMNV4
		Sand Dune	SD-EW/MWS1

Botanica Consulting

Vegetation Communities
White Cliffs Road
survey area
Map 2
Gold Road Resources Ltd

Date: 12/11/2015
Author: Pat Harlan
Office: Kalgoorlie
Drawing:
Scale: 1:2500 Projection: MGA Zone 51 (GDA96)



565,000 mE 566,000 mE 567,000 mE 568,000 mE 569,000 mE 570,000 mE 571,000 mE 572,000 mE 573,000 mE 574,000 mE

6,888,000 mN
6,887,000 mN
6,886,000 mN
6,885,000 mN
6,884,000 mN
6,883,000 mN
6,882,000 mN



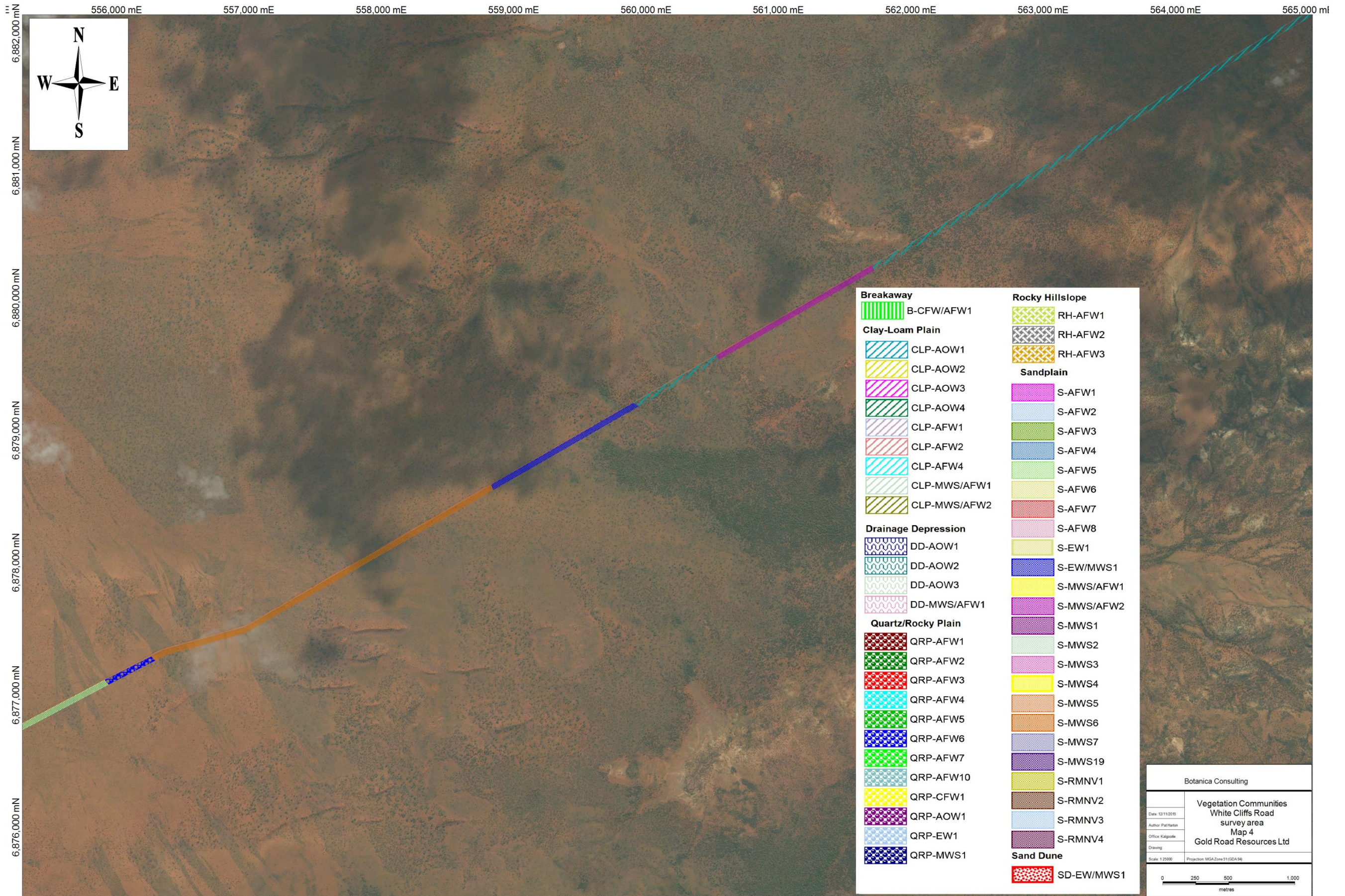
Botanica Consulting

**Vegetation Communities
White Cliffs Road
survey area
Map 3
Gold Road Resources Ltd**

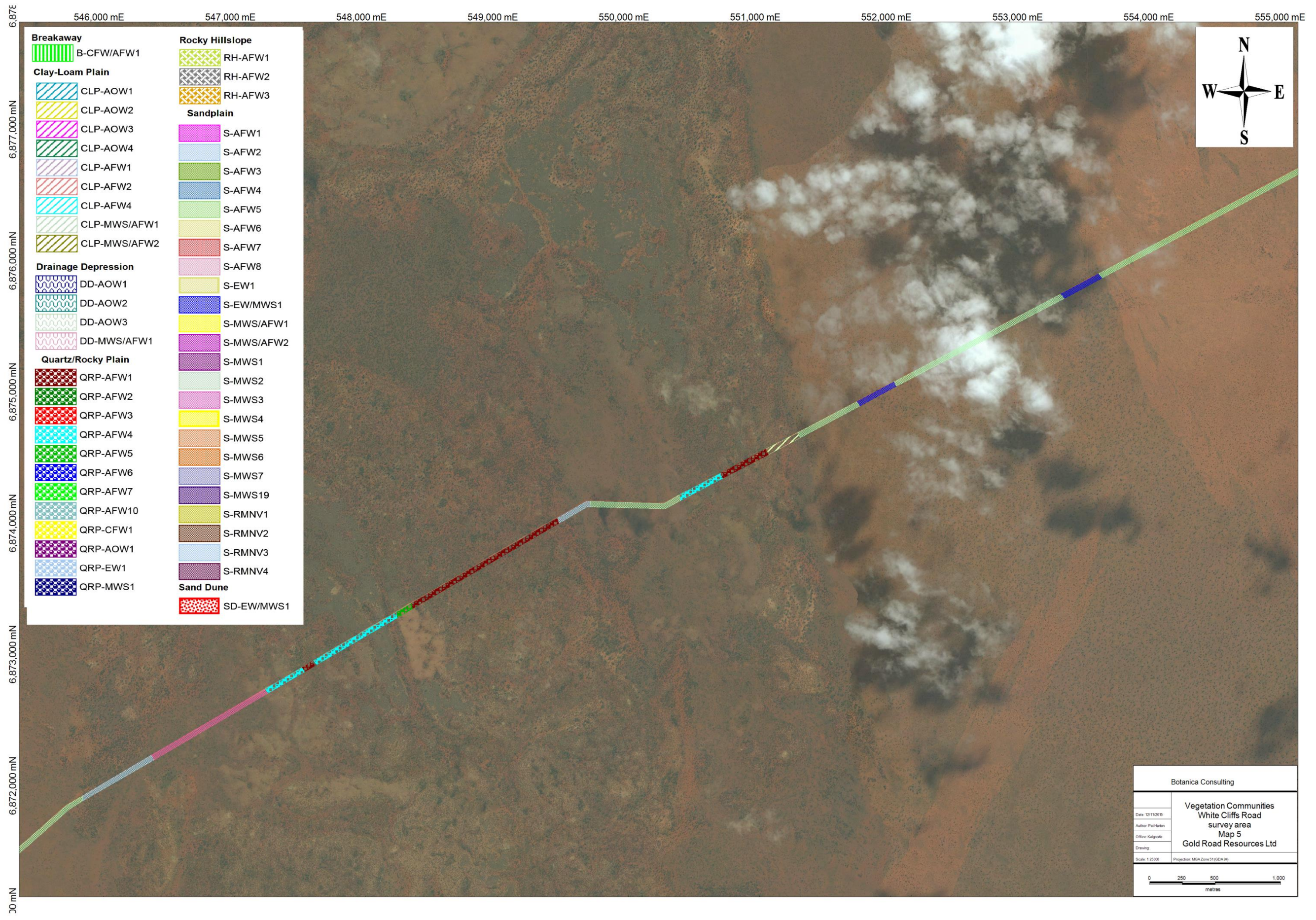
Date: 10/11/2010
Author: Pat Harkin
Office: Kalgoorlie
Drawing:
Scale: 1:25000 Projection: MGA Zone 51 (GDA 94)

0 250 500 1,000 metres

- | | |
|----------------------------|------------------------|
| Breakaway | Rocky Hillslope |
| B-CFW/AFW1 | RH-AFW1 |
| Clay-Loam Plain | RH-AFW2 |
| CLP-AOW1 | RH-AFW3 |
| CLP-AOW2 | Sandplain |
| CLP-AOW3 | S-AFW1 |
| CLP-AOW4 | S-AFW2 |
| CLP-AFW1 | S-AFW3 |
| CLP-AFW2 | S-AFW4 |
| CLP-AFW4 | S-AFW5 |
| CLP-MWS/AFW1 | S-AFW6 |
| CLP-MWS/AFW2 | S-AFW7 |
| Drainage Depression | S-AFW8 |
| DD-AOW1 | S-EW1 |
| DD-AOW2 | S-EW/MWS1 |
| DD-AOW3 | S-MWS/AFW1 |
| DD-MWS/AFW1 | S-MWS/AFW2 |
| Quartz/Rocky Plain | S-MWS1 |
| QRP-AFW1 | S-MWS2 |
| QRP-AFW2 | S-MWS3 |
| QRP-AFW3 | S-MWS4 |
| QRP-AFW4 | S-MWS5 |
| QRP-AFW5 | S-MWS6 |
| QRP-AFW6 | S-MWS7 |
| QRP-AFW7 | S-MWS19 |
| QRP-AFW10 | S-RMNV1 |
| QRP-CFW1 | S-RMNV2 |
| QRP-AOW1 | S-RMNV3 |
| QRP-EW1 | S-RMNV4 |
| QRP-MWS1 | Sand Dune |
| | SD-EW/MWS1 |



Botanica Consulting	
Vegetation Communities White Cliffs Road survey area Map 4 Gold Road Resources Ltd	
Date: 12/11/2015	
Author: Pat Hatten	
Office: Kalgoorlie	
Scale: 1:25000	Projection: MGA Zone 51 (GDA 94)
0 250 500 1,000 metres	

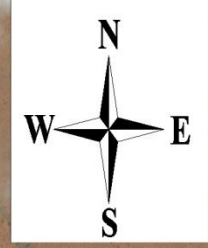


546,000 mE 547,000 mE 548,000 mE 549,000 mE 550,000 mE 551,000 mE 552,000 mE 553,000 mE 554,000 mE 555,000 mE

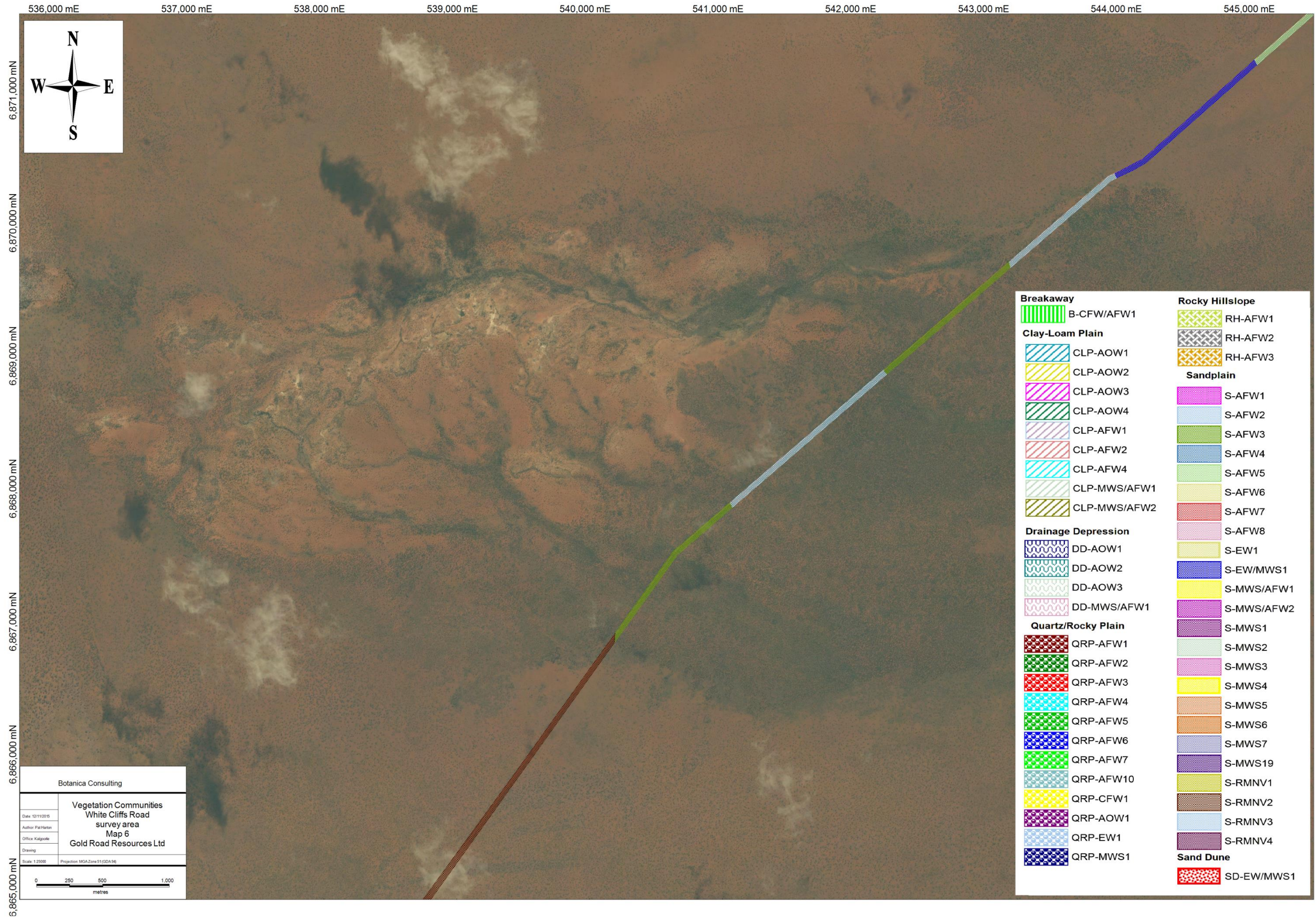
- | | |
|----------------------------|------------------------|
| Breakaway | Rocky Hillslope |
| B-CFW/AFW1 | RH-AFW1 |
| Clay-Loam Plain | RH-AFW2 |
| CLP-AOW1 | RH-AFW3 |
| CLP-AOW2 | Sandplain |
| CLP-AOW3 | S-AFW1 |
| CLP-AOW4 | S-AFW2 |
| CLP-AFW1 | S-AFW3 |
| CLP-AFW2 | S-AFW4 |
| CLP-AFW4 | S-AFW5 |
| CLP-MWS/AFW1 | S-AFW6 |
| CLP-MWS/AFW2 | S-AFW7 |
| Drainage Depression | S-AFW8 |
| DD-AOW1 | S-EW1 |
| DD-AOW2 | S-EW/MWS1 |
| DD-AOW3 | S-MWS/AFW1 |
| DD-MWS/AFW1 | S-MWS/AFW2 |
| Quartz/Rocky Plain | S-MWS1 |
| QRP-AFW1 | S-MWS2 |
| QRP-AFW2 | S-MWS3 |
| QRP-AFW3 | S-MWS4 |
| QRP-AFW4 | S-MWS5 |
| QRP-AFW5 | S-MWS6 |
| QRP-AFW6 | S-MWS7 |
| QRP-AFW7 | S-MWS19 |
| QRP-AFW10 | S-RMNV1 |
| QRP-CFW1 | S-RMNV2 |
| QRP-AOW1 | S-RMNV3 |
| QRP-EW1 | S-RMNV4 |
| QRP-MWS1 | Sand Dune |
| | SD-EW/MWS1 |



6,872,000 mN 6,873,000 mN 6,874,000 mN 6,875,000 mN 6,876,000 mN 6,877,000 mN 6,878,000 mN



Botanica Consulting	
Date: 12/11/2019	Vegetation Communities White Cliffs Road survey area Map 5 Gold Road Resources Ltd
Author: Pat Harkin	
Office: Kalgoorlie	
Drawing:	
Scale: 1:2500	Projection: MGA Zone 51 (GDA 94)



536,000 mE 537,000 mE 538,000 mE 539,000 mE 540,000 mE 541,000 mE 542,000 mE 543,000 mE 544,000 mE 545,000 mE



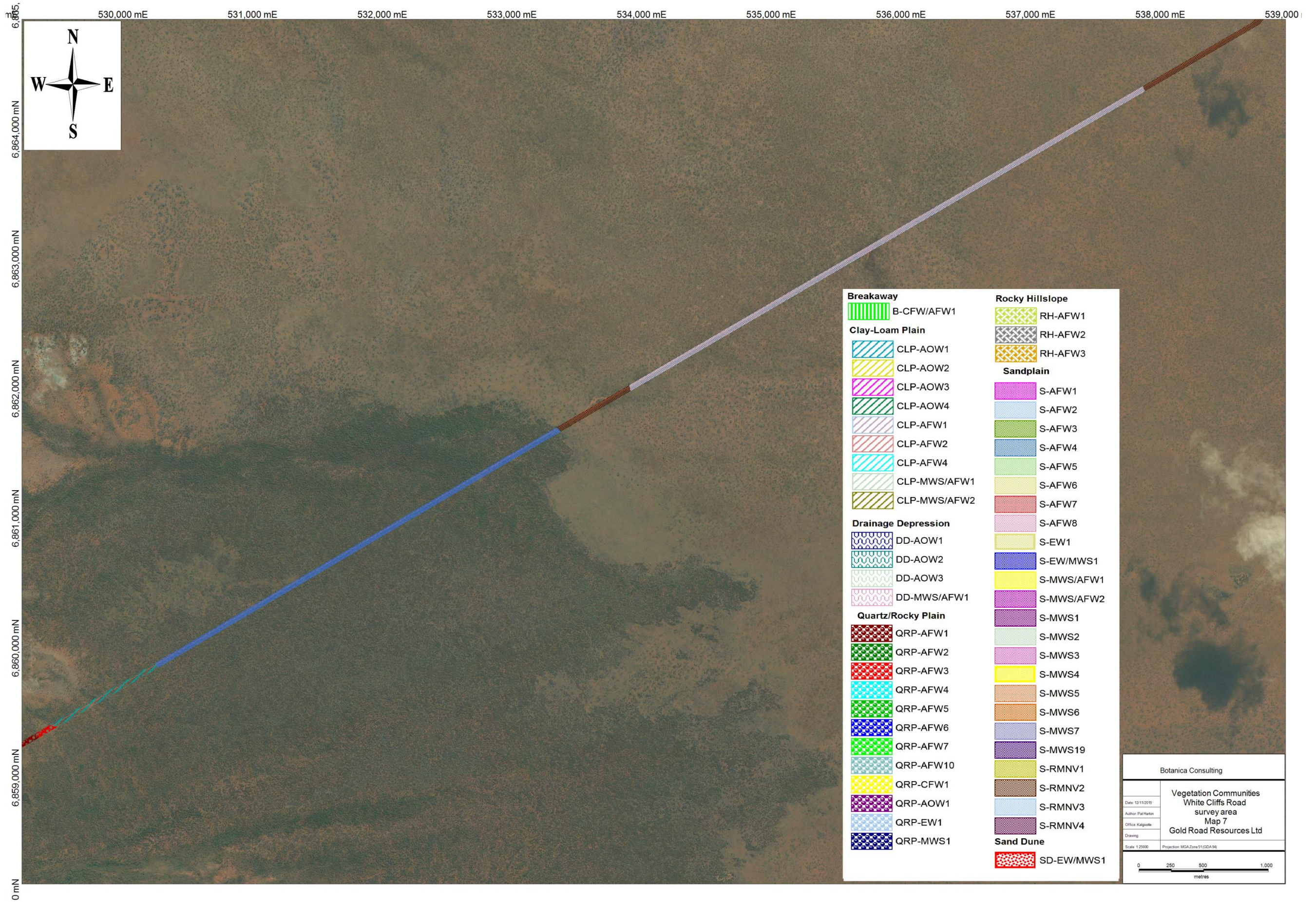
6,871,000 mN
6,870,000 mN
6,869,000 mN
6,868,000 mN
6,867,000 mN
6,866,000 mN
6,865,000 mN

Breakaway	B-CFW/AFW1	Rocky Hillslope	RH-AFW1
Clay-Loam Plain	CLP-AOW1	RH-AFW2	RH-AFW3
	CLP-AOW2	Sandplain	S-AFW1
	CLP-AOW3		S-AFW2
	CLP-AOW4		S-AFW3
	CLP-AFW1		S-AFW4
	CLP-AFW2		S-AFW5
	CLP-AFW4		S-AFW6
	CLP-MWS/AFW1		S-AFW7
	CLP-MWS/AFW2		S-AFW8
Drainage Depression	DD-AOW1		S-EW1
	DD-AOW2		S-EW/MWS1
	DD-AOW3		S-MWS/AFW1
	DD-MWS/AFW1		S-MWS/AFW2
Quartz/Rocky Plain	QRP-AFW1		S-MWS1
	QRP-AFW2		S-MWS2
	QRP-AFW3		S-MWS3
	QRP-AFW4		S-MWS4
	QRP-AFW5		S-MWS5
	QRP-AFW6		S-MWS6
	QRP-AFW7		S-MWS7
	QRP-AFW10		S-MWS19
	QRP-CFW1		S-RMNV1
	QRP-AOW1		S-RMNV2
	QRP-EW1		S-RMNV3
	QRP-MWS1		S-RMNV4
		Sand Dune	SD-EW/MWS1

Botanica Consulting

**Vegetation Communities
White Cliffs Road
survey area
Map 6
Gold Road Resources Ltd**

Date: 10/11/2015
Author: Pat Norton
Office: Kalgoorlie
Drawing:
Scale: 1:25000 Projection: MGA Zone 51 (GDA96)



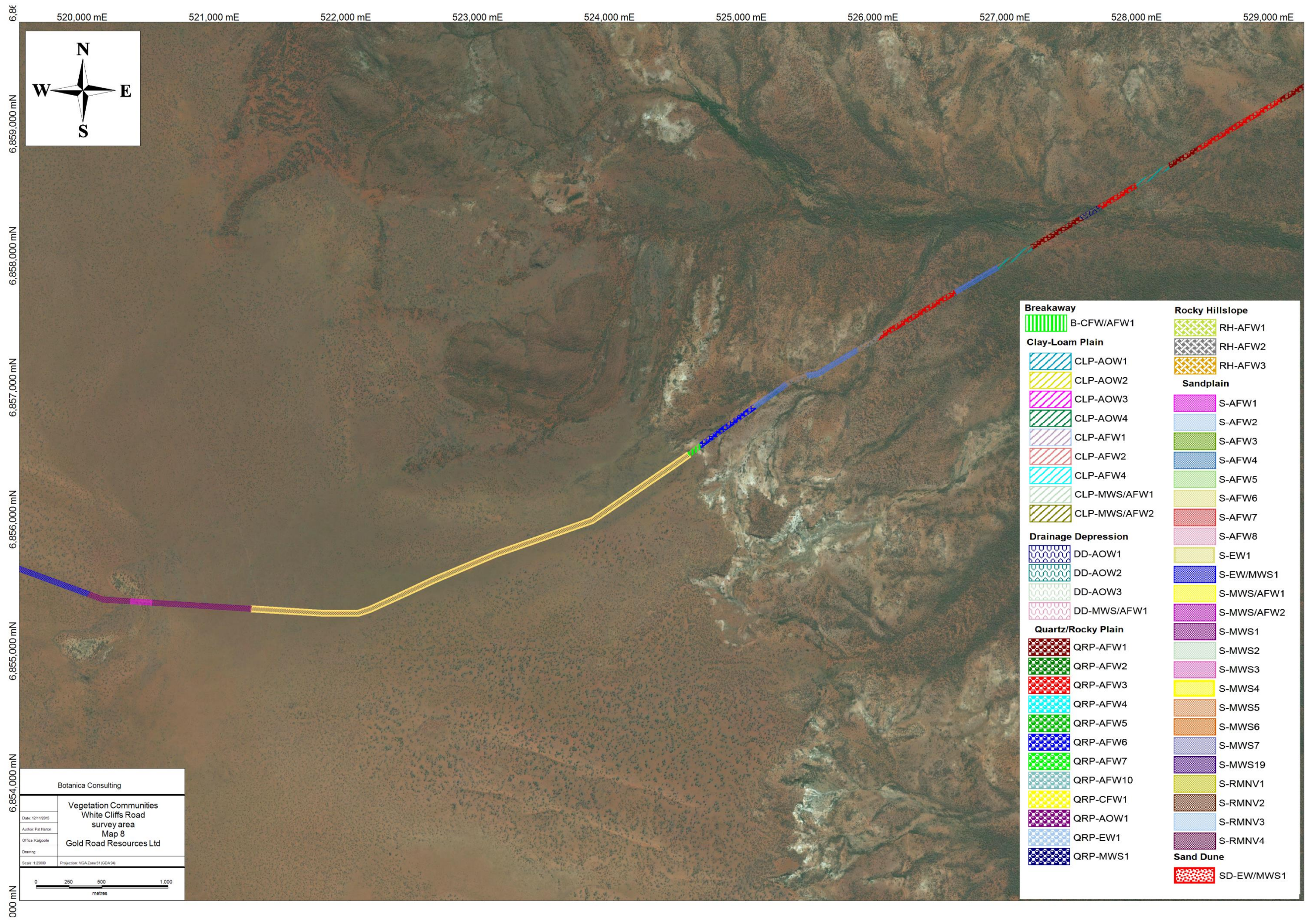
Breakaway	B-CFW/AFW1	Rocky Hillslope	RH-AFW1
Clay-Loam Plain	CLP-AOW1	RH-AFW2	RH-AFW3
	CLP-AOW2	Sandplain	S-AFW1
	CLP-AOW3	S-AFW2	S-AFW3
	CLP-AOW4	S-AFW4	S-AFW5
	CLP-AFW1	S-AFW6	S-AFW7
	CLP-AFW2	S-AFW8	S-EW1
	CLP-AFW4	S-EW/MWS1	S-MWS/AFW1
	CLP-MWS/AFW1	S-MWS/AFW2	S-MWS1
	CLP-MWS/AFW2	S-MWS2	S-MWS3
Drainage Depression	DD-AOW1	S-MWS4	S-MWS5
	DD-AOW2	S-MWS6	S-MWS7
	DD-AOW3	S-MWS19	S-RMNV1
	DD-MWS/AFW1	S-RMNV2	S-RMNV3
Quartz/Rocky Plain	QRP-AFW1	S-RMNV4	Sand Dune
	QRP-AFW2	SD-EW/MWS1	
	QRP-AFW3		
	QRP-AFW4		
	QRP-AFW5		
	QRP-AFW6		
	QRP-AFW7		
	QRP-AFW10		
	QRP-CFW1		
	QRP-AOW1		
	QRP-EW1		
	QRP-MWS1		

Botanica Consulting

Vegetation Communities
White Cliffs Road
survey area
Map 7
Gold Road Resources Ltd

Date: 12/11/2019
Author: Pat Hatten
Office: Kalgoorlie
Drawing:
Scale: 1:2500
Projection: MGA Zone 51 (GDA 94)

0 250 500 1,000
metres



6,884,000 mN 520,000 mE 521,000 mE 522,000 mE 523,000 mE 524,000 mE 525,000 mE 526,000 mE 527,000 mE 528,000 mE 529,000 mE



6,859,000 mN
6,858,000 mN
6,857,000 mN
6,856,000 mN
6,855,000 mN
6,854,000 mN
000 mN

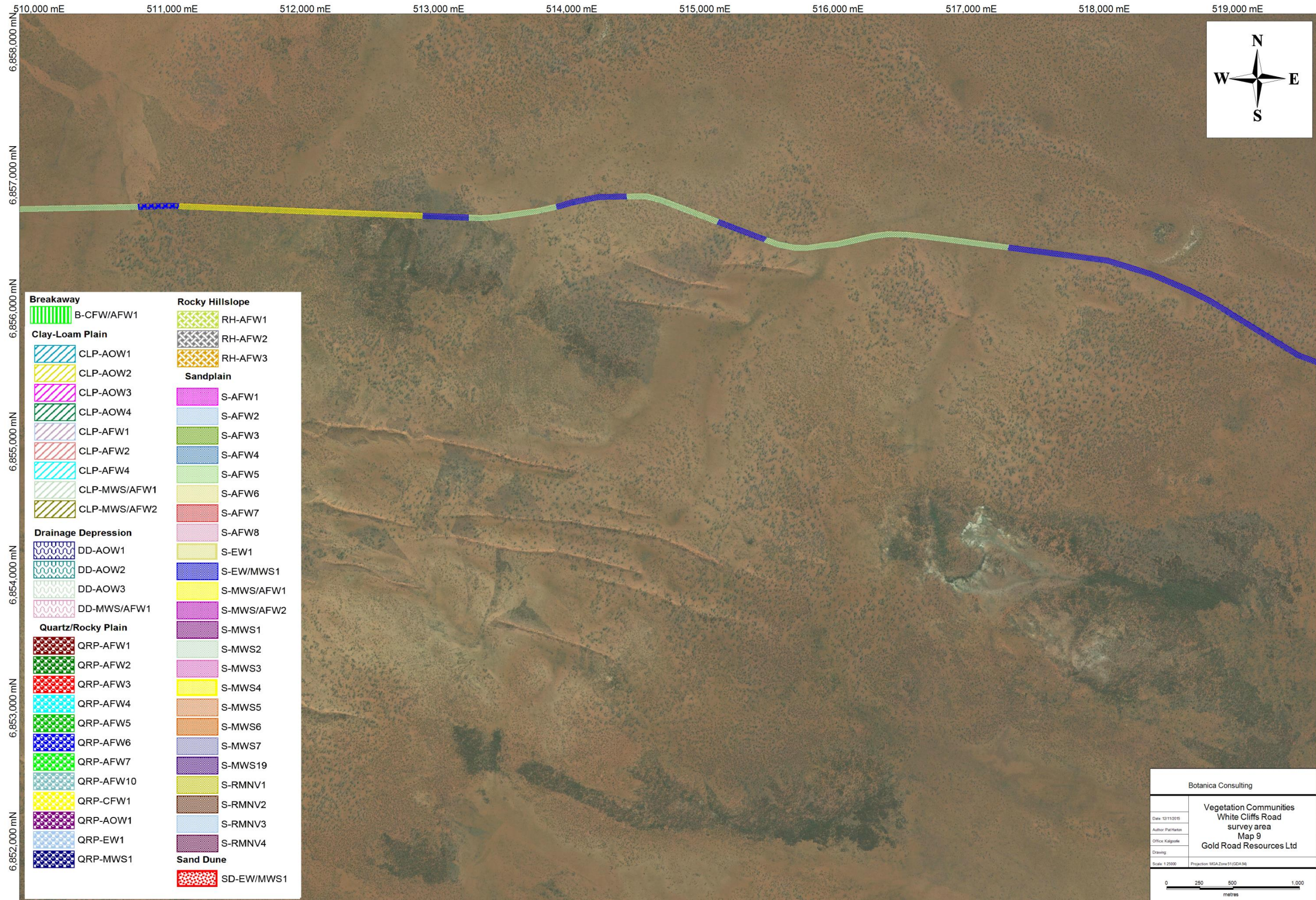
Breakaway	B-CFW/AFW1	Rocky Hillslope	RH-AFW1
Clay-Loam Plain	CLP-AOW1	RH-AFW2	RH-AFW3
	CLP-AOW2	Sandplain	S-AFW1
	CLP-AOW3		S-AFW2
	CLP-AOW4		S-AFW3
	CLP-AFW1		S-AFW4
	CLP-AFW2		S-AFW5
	CLP-AFW4		S-AFW6
	CLP-MWS/AFW1		S-AFW7
	CLP-MWS/AFW2		S-AFW8
Drainage Depression	DD-AOW1		S-EW1
	DD-AOW2		S-EW/MWS1
	DD-AOW3		S-MWS/AFW1
	DD-MWS/AFW1		S-MWS/AFW2
Quartz/Rocky Plain	QRP-AFW1		S-MWS1
	QRP-AFW2		S-MWS2
	QRP-AFW3		S-MWS3
	QRP-AFW4		S-MWS4
	QRP-AFW5		S-MWS5
	QRP-AFW6		S-MWS6
	QRP-AFW7		S-MWS7
	QRP-AFW10		S-MWS19
	QRP-CFW1		S-RMNV1
	QRP-AOW1		S-RMNV2
	QRP-EW1		S-RMNV3
	QRP-MWS1		S-RMNV4
		Sand Dune	SD-EW/MWS1

Botanica Consulting

**Vegetation Communities
White Cliffs Road
survey area
Map 8**

Gold Road Resources Ltd

Date: 12/11/2015
Author: Pat Harlan
Office: Kalgoorlie
Scale: 1:25000
Projection: MGA Zone 51 (GDA96)



Breakaway	Rocky Hillslope
B-CFW/AFW1	RH-AFW1
Clay-Loam Plain	RH-AFW2
CLP-AOW1	RH-AFW3
CLP-AOW2	Sandplain
CLP-AOW3	S-AFW1
CLP-AOW4	S-AFW2
CLP-AFW1	S-AFW3
CLP-AFW2	S-AFW4
CLP-AFW4	S-AFW5
CLP-MWS/AFW1	S-AFW6
CLP-MWS/AFW2	S-AFW7
Drainage Depression	S-AFW8
DD-AOW1	S-EW1
DD-AOW2	S-EW/MWS1
DD-AOW3	S-MWS/AFW1
DD-MWS/AFW1	S-MWS/AFW2
Quartz/Rocky Plain	S-MWS1
QRP-AFW1	S-MWS2
QRP-AFW2	S-MWS3
QRP-AFW3	S-MWS4
QRP-AFW4	S-MWS5
QRP-AFW5	S-MWS6
QRP-AFW6	S-MWS7
QRP-AFW7	S-MWS19
QRP-AFW10	S-RMNV1
QRP-CFW1	S-RMNV2
QRP-AOW1	S-RMNV3
QRP-EW1	S-RMNV4
QRP-MWS1	Sand Dune
	SD-EW/MWS1

Botanica Consulting	
Vegetation Communities White Cliffs Road survey area Map 9 Gold Road Resources Ltd	
Date: 12/11/2015	
Author: Pat Harkin	
Office: Kalgoorlie	
Scale: 1:25000	Projection: MGA Zone 51 (GDA 94)
0 250 500 1,000 metres	