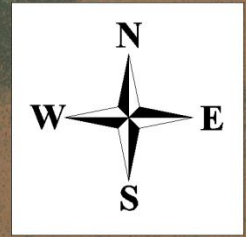


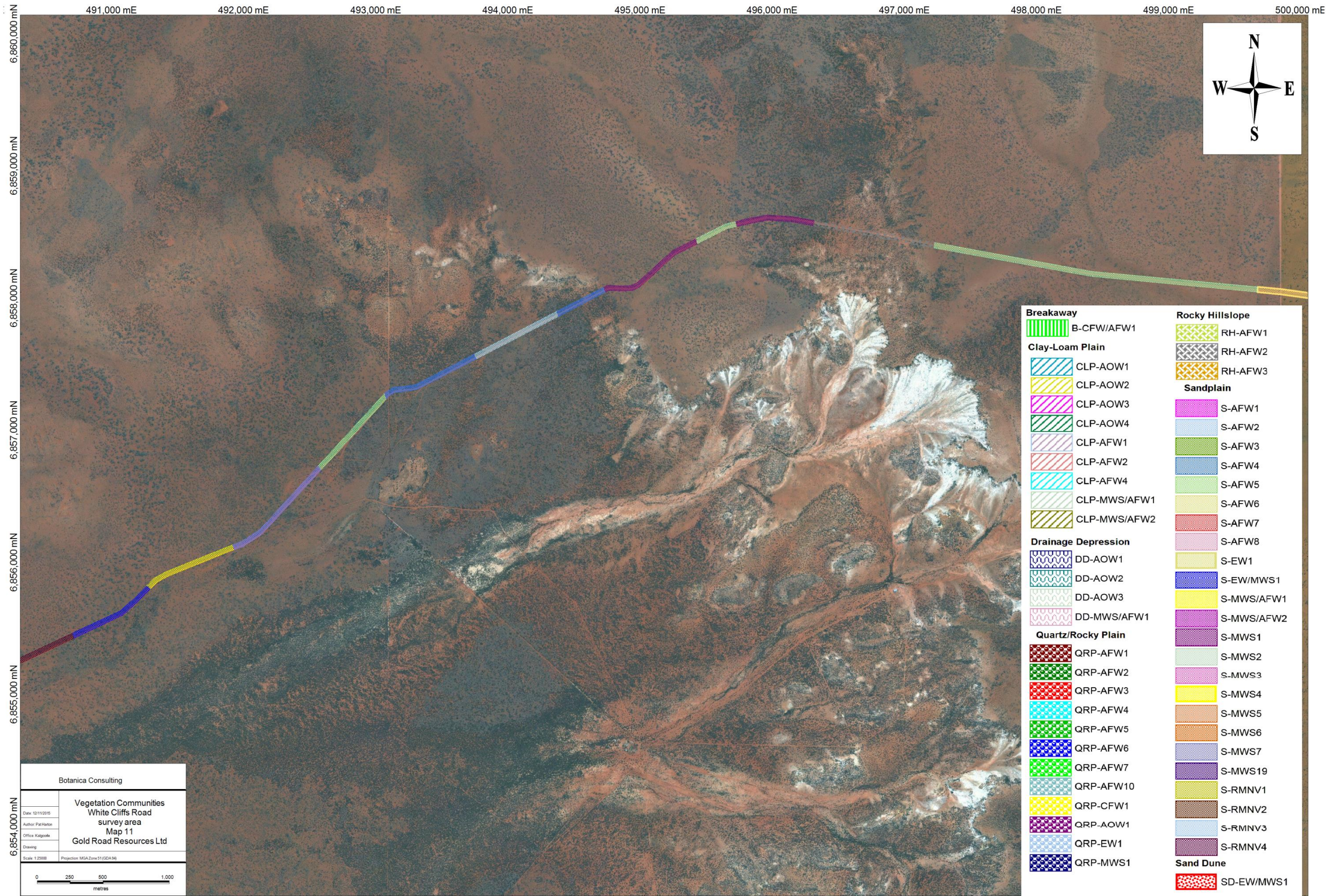
1,000 mE 501,000 mE 502,000 mE 503,000 mE 504,000 mE 505,000 mE 506,000 mE 507,000 mE 508,000 mE 509,000 mE 510

6,859,000 mN
6,858,000 mN
6,857,000 mN
6,856,000 mN
6,855,000 mN
6,854,000 mN
6,853,000 mN



Breakaway	B-CFW/AFW1	Rocky Hillslope	RH-AFW1
Clay-Loam Plain	CLP-AOW1	RH-AFW2	RH-AFW3
	CLP-AOW2	Sandplain	S-AFW1
	CLP-AOW3	S-AFW2	S-AFW3
	CLP-AOW4	S-AFW4	S-AFW5
	CLP-AFW1	S-AFW6	S-AFW7
	CLP-AFW2	S-AFW8	S-EW1
	CLP-AFW4	S-EW/MWS1	S-MWS/AFW1
	CLP-MWS/AFW1	S-MWS/AFW2	S-MWS1
	CLP-MWS/AFW2	S-MWS2	S-MWS3
Drainage Depression	DD-AOW1	S-MWS4	S-MWS5
	DD-AOW2	S-MWS6	S-MWS7
	DD-AOW3	S-MWS19	S-RMNV1
	DD-MWS/AFW1	S-MWS2	S-RMNV2
Quartz/Rocky Plain	QRP-AFW1	S-MWS3	S-RMNV3
	QRP-AFW2	S-MWS4	S-RMNV4
	QRP-AFW3	S-MWS5	Sand Dune
	QRP-AFW4	S-MWS6	SD-EW/MWS1
	QRP-AFW5	S-MWS7	
	QRP-AFW6	S-MWS19	
	QRP-AFW7	S-RMNV1	
	QRP-AFW10	S-RMNV2	
	QRP-CFW1	S-RMNV3	
	QRP-AOW1	S-RMNV4	
	QRP-EW1		
	QRP-MWS1		

Botanica Consulting	
Date: 12/11/2019	Vegetation Communities White Cliffs Road survey area Map 10 Gold Road Resources Ltd
Author: Pat Harkin	
Office: Kalgoorlie	
Scale: 1:2500	
Projection: MGA Zone 51 (GDA 94)	

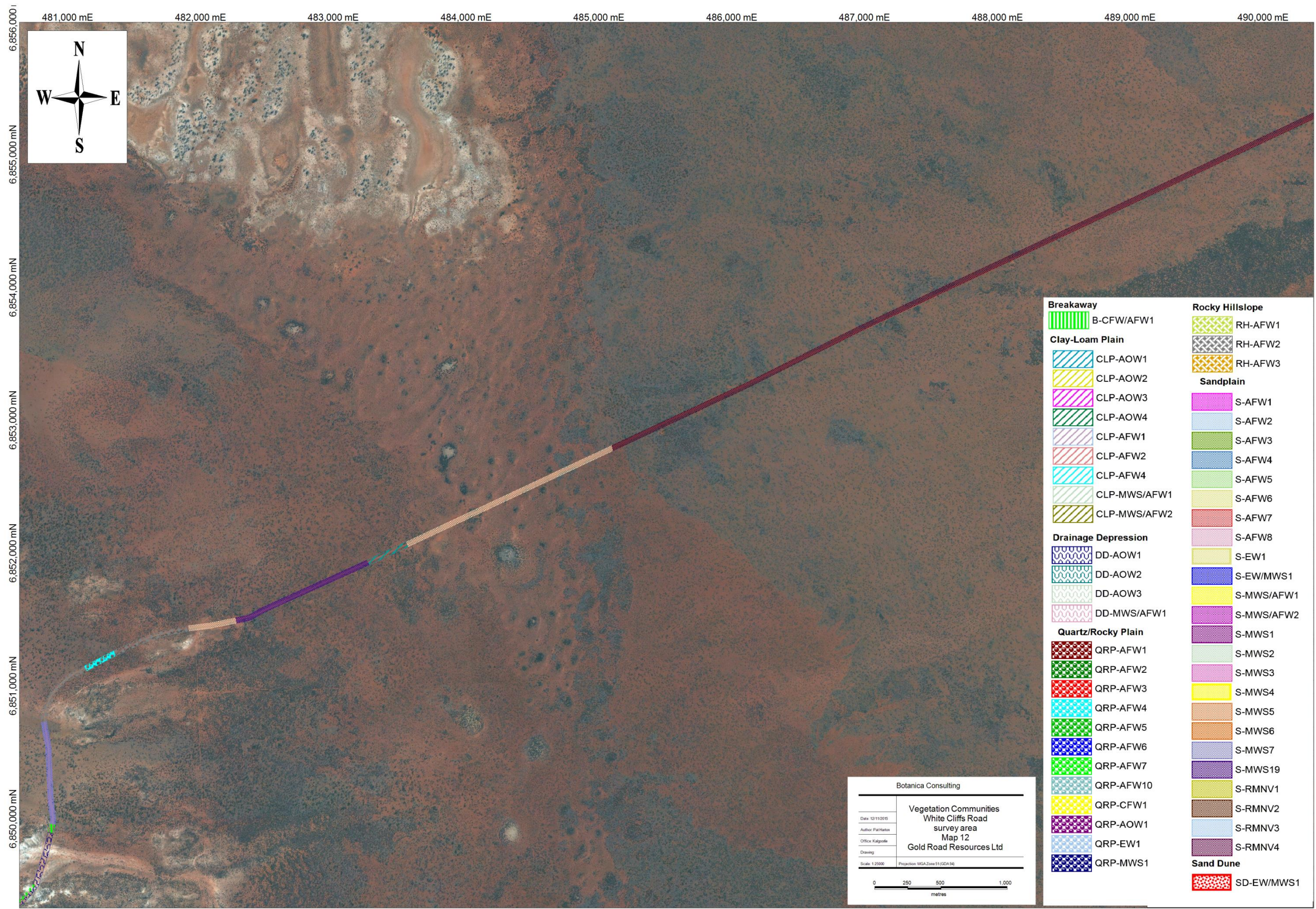


Breakaway	B-CFW/AFW1	Rocky Hillslope	RH-AFW1
Clay-Loam Plain	CLP-AOW1	RH-AFW2	RH-AFW3
	CLP-AOW2	Sandplain	
	CLP-AOW3	S-AFW1	S-AFW2
	CLP-AOW4	S-AFW3	S-AFW4
	CLP-AFW1	S-AFW5	S-AFW6
	CLP-AFW2	S-AFW7	S-AFW8
	CLP-AFW4	S-EW1	S-EW/MWS1
	CLP-MWS/AFW1	S-MWS/AFW1	S-MWS/AFW2
	CLP-MWS/AFW2	S-MWS1	S-MWS2
Drainage Depression	DD-AOW1	S-MWS3	S-MWS4
	DD-AOW2	S-MWS5	S-MWS6
	DD-AOW3	S-MWS7	S-MWS19
	DD-MWS/AFW1	S-MWS1	S-RMNV1
Quartz/Rocky Plain	QRP-AFW1	S-MWS2	S-RMNV2
	QRP-AFW2	S-MWS3	S-RMNV3
	QRP-AFW3	S-MWS4	S-RMNV4
	QRP-AFW4	S-MWS5	Sand Dune
	QRP-AFW5	S-MWS6	SD-EW/MWS1
	QRP-AFW6	S-MWS7	
	QRP-AFW7	S-MWS19	
	QRP-AFW10	S-RMNV1	
	QRP-CFW1	S-RMNV2	
	QRP-AOW1	S-RMNV3	
	QRP-EW1	S-RMNV4	
	QRP-MWS1		

Botanica Consulting

Vegetation Communities
White Cliffs Road
survey area
Map 11
Gold Road Resources Ltd

Date: 10/11/2010
Author: Pat Hodge
Office: Kalgoorlie
Drawing:
Scale: 1:2500
Projection: MGA Zone 51 (GDA 94)



481,000 mE 482,000 mE 483,000 mE 484,000 mE 485,000 mE 486,000 mE 487,000 mE 488,000 mE 489,000 mE 490,000 mE

6,856,000 mN
6,855,000 mN
6,854,000 mN
6,853,000 mN
6,852,000 mN
6,851,000 mN
6,850,000 mN



Breakaway	B-CFW/AFW1	Rocky Hillslope	RH-AFW1
Clay-Loam Plain	CLP-AOW1	RH-AFW2	RH-AFW3
	CLP-AOW2	Sandplain	
	CLP-AOW3	S-AFW1	S-AFW2
	CLP-AOW4	S-AFW3	S-AFW4
	CLP-AFW1	S-AFW5	S-AFW6
	CLP-AFW2	S-AFW7	S-AFW8
	CLP-AFW4	S-EW1	S-EW/MWS1
	CLP-MWS/AFW1	S-MWS/AFW1	S-MWS/AFW2
	CLP-MWS/AFW2	S-MWS1	S-MWS2
Drainage Depression	DD-AOW1	S-MWS3	S-MWS4
	DD-AOW2	S-MWS5	S-MWS6
	DD-AOW3	S-MWS7	S-MWS19
	DD-MWS/AFW1	S-RMNV1	S-RMNV2
Quartz/Rocky Plain	QRP-AFW1	S-RMNV3	S-RMNV4
	QRP-AFW2	Sand Dune	
	QRP-AFW3	SD-EW/MWS1	
	QRP-AFW4		
	QRP-AFW5		
	QRP-AFW6		
	QRP-AFW7		
	QRP-AFW10		
	QRP-CFW1		
	QRP-AOW1		
	QRP-EW1		
	QRP-MWS1		

Botanica Consulting

Vegetation Communities
White Cliffs Road
survey area
Map 12
Gold Road Resources Ltd

Date: 10/11/2015
Author: Pat Hansen
Office: Kalgoorlie
Drawing:
Scale: 1:25000 Projection: MGA Zone 51 (GDA 96)

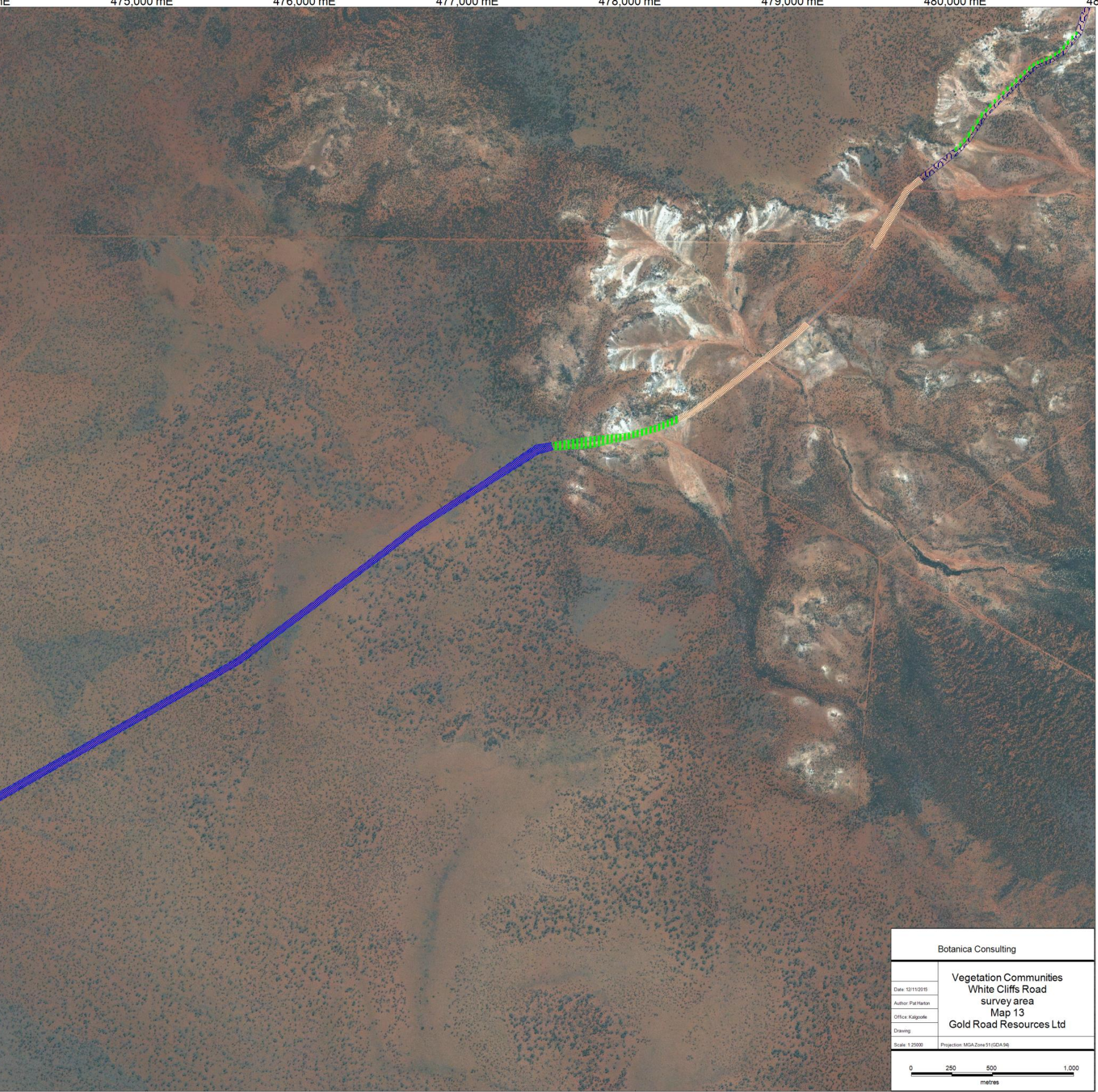
0 250 500 1,000
metres

00 mE 472.000 mE 473.000 mE 474.000 mE 475.000 mE 476.000 mE 477.000 mE 478.000 mE 479.000 mE 480.000 mE 481.0

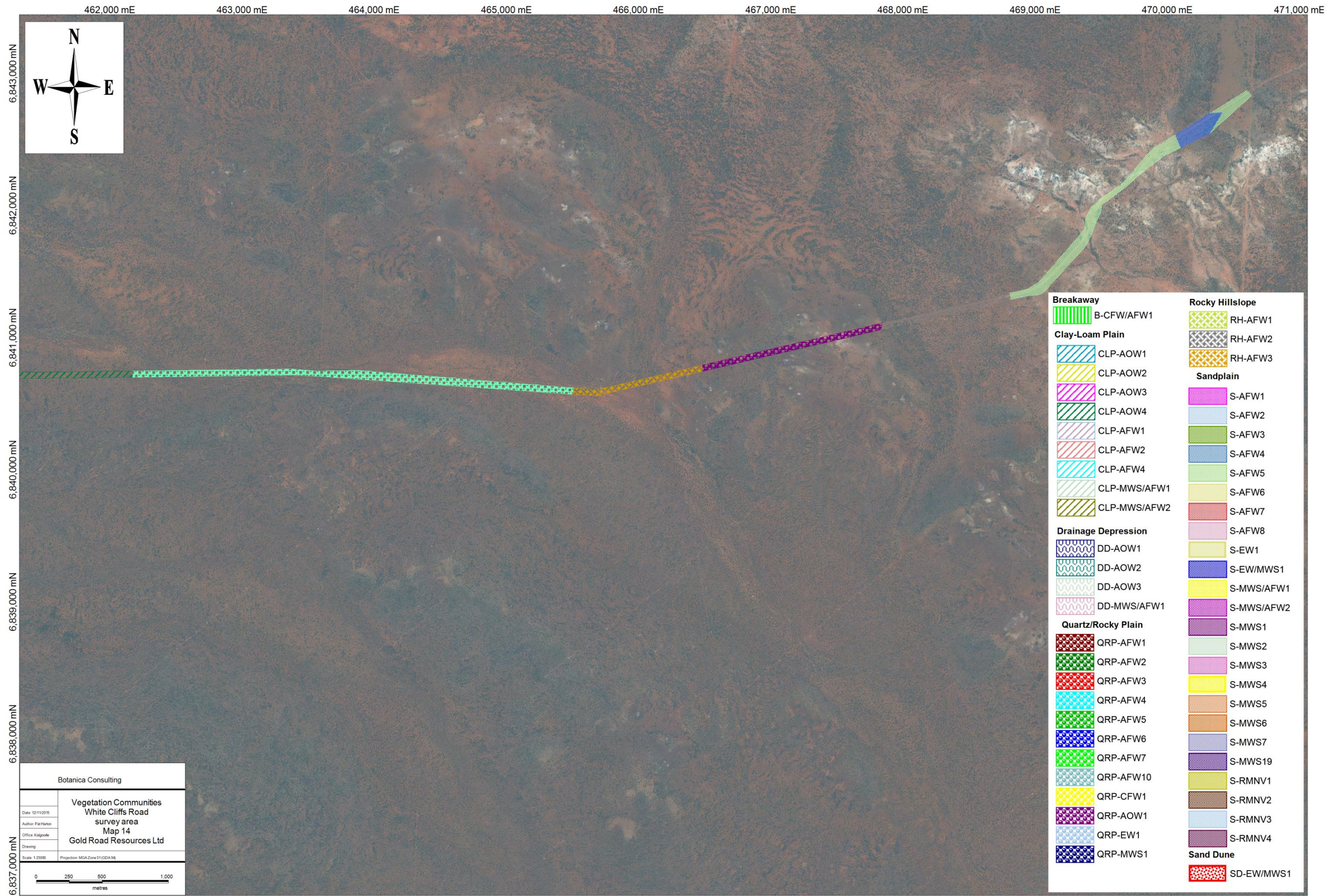
6,849,000 mN
6,848,000 mN
6,847,000 mN
6,846,000 mN
6,845,000 mN
6,844,000 mN
6,843,000 mN



Breakaway	B-CFW/AFW1	Rocky Hillslope	RH-AFW1
Clay-Loam Plain	CLP-AOW1	RH-AFW2	RH-AFW3
	CLP-AOW2	Sandplain	S-AFW1
	CLP-AOW3	S-AFW2	S-AFW3
	CLP-AOW4	S-AFW4	S-AFW5
	CLP-AFW1	S-AFW6	S-AFW7
	CLP-AFW2	S-AFW8	S-EW1
	CLP-AFW4	S-EW/MWS1	S-MWS/AFW1
	CLP-MWS/AFW1	S-MWS/AFW2	S-MWS1
	CLP-MWS/AFW2	S-MWS2	S-MWS3
Drainage Depression	DD-AOW1	S-MWS4	S-MWS5
	DD-AOW2	S-MWS6	S-MWS7
	DD-AOW3	S-MWS19	S-RMNV1
	DD-MWS/AFW1	S-MWS1	S-RMNV2
Quartz/Rocky Plain	QRP-AFW1	S-MWS2	S-RMNV3
	QRP-AFW2	S-MWS3	S-RMNV4
	QRP-AFW3	S-MWS4	Sand Dune
	QRP-AFW4	S-MWS5	SD-EW/MWS1
	QRP-AFW5	S-MWS6	
	QRP-AFW6	S-MWS7	
	QRP-AFW7	S-MWS19	
	QRP-AFW10	S-RMNV1	
	QRP-CFW1	S-RMNV2	
	QRP-AOW1	S-RMNV3	
	QRP-EW1	S-RMNV4	
	QRP-MWS1		



Botanica Consulting	
Vegetation Communities White Cliffs Road survey area Map 13 Gold Road Resources Ltd	
Date: 12/11/2015	Author: Pat Martin
Office: Kalgoorlie	Scale: 1:2500
Projection: MGA Zone 51 (GDA 94)	
0 250 500 1,000 metres	



462,000 mE 463,000 mE 464,000 mE 465,000 mE 466,000 mE 467,000 mE 468,000 mE 469,000 mE 470,000 mE 471,000 mE

6,843,000 mN
6,842,000 mN
6,841,000 mN
6,840,000 mN
6,839,000 mN
6,838,000 mN
6,837,000 mN



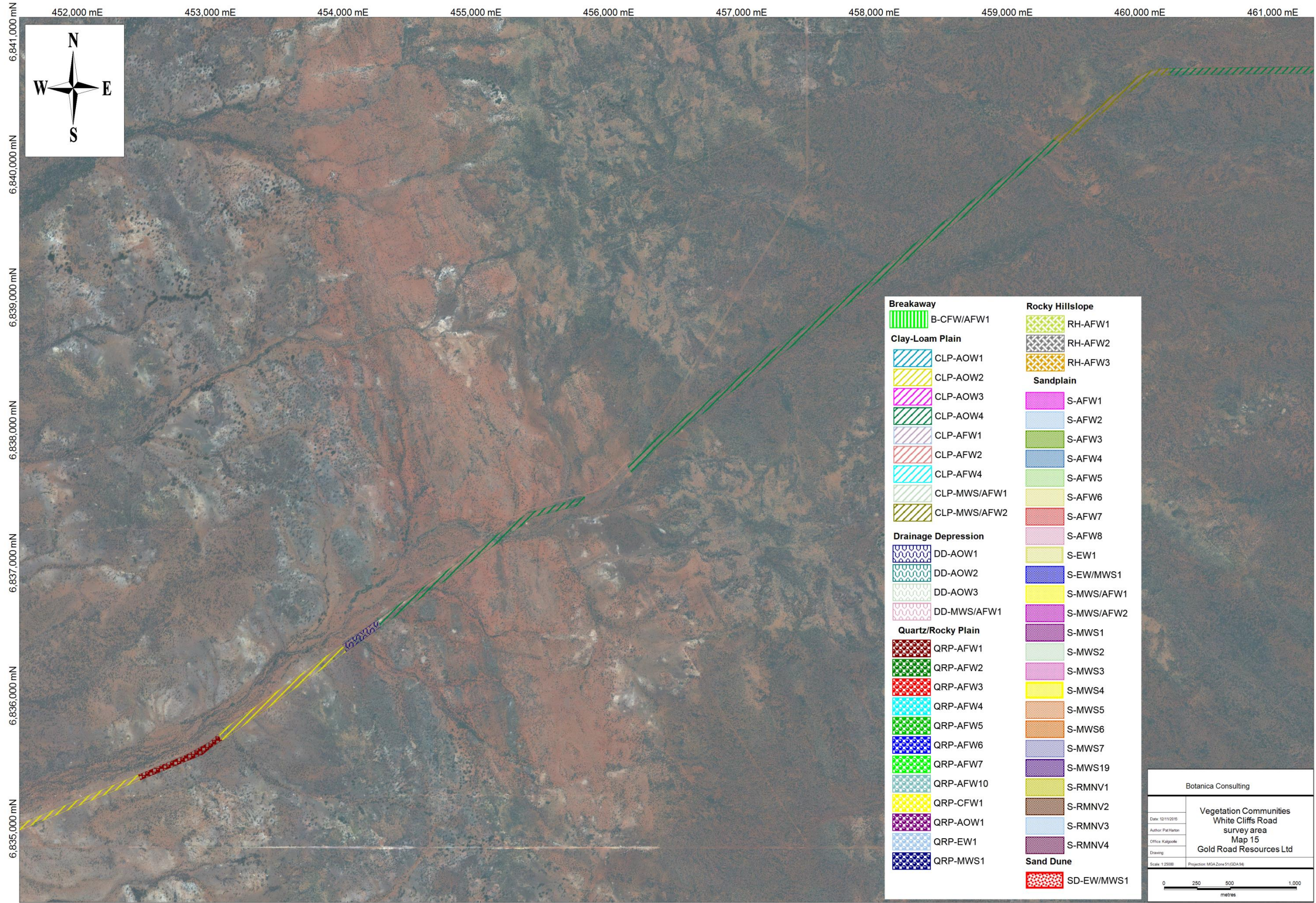
Breakaway	Rocky Hillslope
B-CFW/AFW1	RH-AFW1
Clay-Loam Plain	RH-AFW2
CLP-AOW1	RH-AFW3
CLP-AOW2	Sandplain
CLP-AOW3	S-AFW1
CLP-AOW4	S-AFW2
CLP-AFW1	S-AFW3
CLP-AFW2	S-AFW4
CLP-AFW4	S-AFW5
CLP-MWS/AFW1	S-AFW6
CLP-MWS/AFW2	S-AFW7
Drainage Depression	S-AFW8
DD-AOW1	S-EW1
DD-AOW2	S-EW/MWS1
DD-AOW3	S-MWS/AFW1
DD-MWS/AFW1	S-MWS/AFW2
Quartz/Rocky Plain	S-MWS1
QRP-AFW1	S-MWS2
QRP-AFW2	S-MWS3
QRP-AFW3	S-MWS4
QRP-AFW4	S-MWS5
QRP-AFW5	S-MWS6
QRP-AFW6	S-MWS7
QRP-AFW7	S-MWS19
QRP-AFW10	S-RMNV1
QRP-CFW1	S-RMNV2
QRP-AOW1	S-RMNV3
QRP-EW1	S-RMNV4
QRP-MWS1	Sand Dune
	SD-EW/MWS1

Botanica Consulting

Vegetation Communities
White Cliffs Road
survey area
Map 14
Gold Road Resources Ltd

Date: 12/11/2015
Author: Pat Norton
Office: Kalgoorlie
Scale: 1:25000 Projection: MGA Zone 51 (GDA96)

0 250 500 1,000
metres



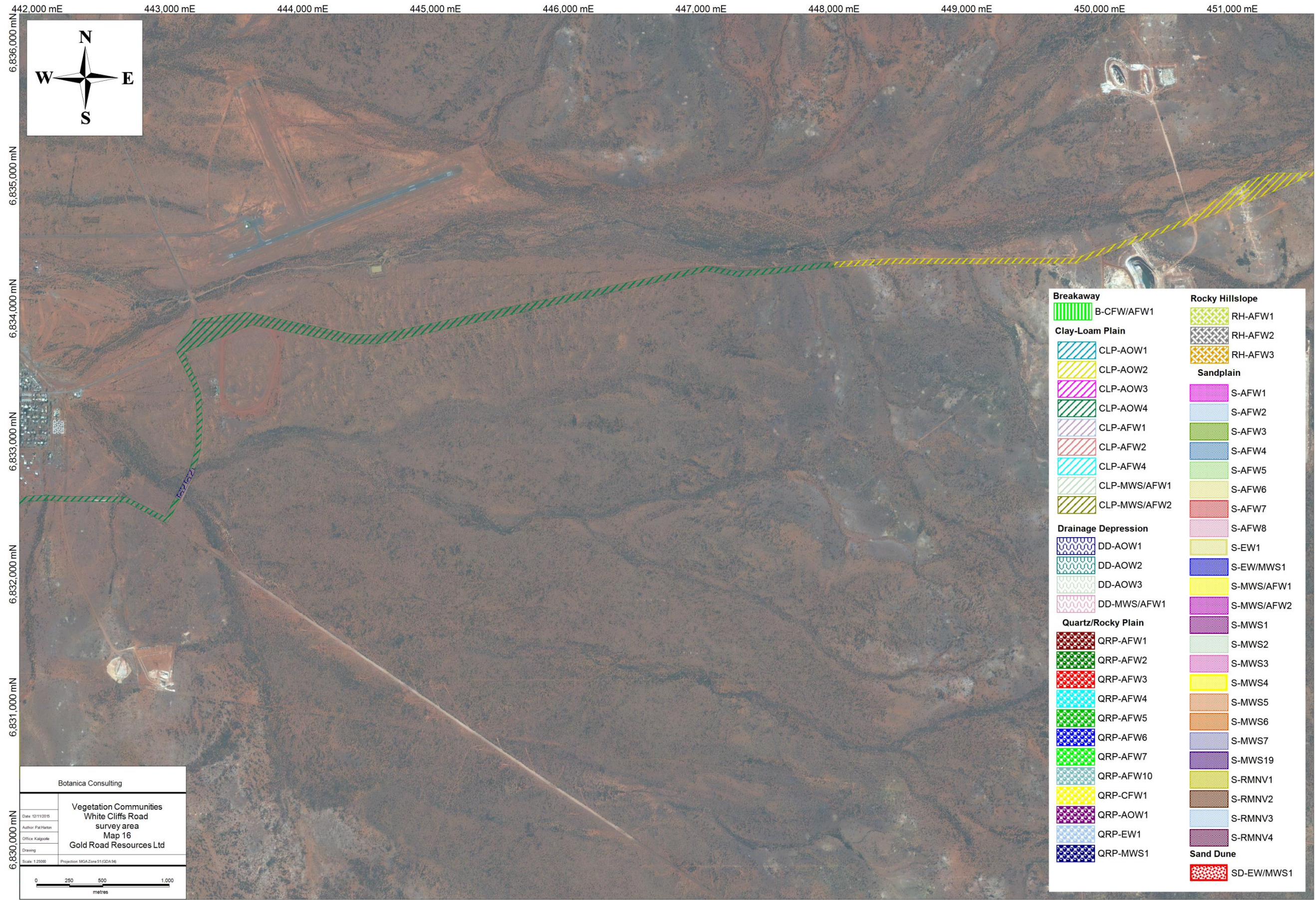
452,000 mE 453,000 mE 454,000 mE 455,000 mE 456,000 mE 457,000 mE 458,000 mE 459,000 mE 460,000 mE 461,000 mE

6,841,000 mN
6,840,000 mN
6,839,000 mN
6,838,000 mN
6,837,000 mN
6,836,000 mN
6,835,000 mN



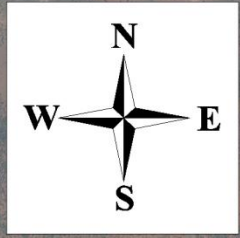
Breakaway	Rocky Hillslope
B-CFW/AFW1	RH-AFW1
Clay-Loam Plain	RH-AFW2
CLP-AOW1	RH-AFW3
CLP-AOW2	Sandplain
CLP-AOW3	S-AFW1
CLP-AOW4	S-AFW2
CLP-AFW1	S-AFW3
CLP-AFW2	S-AFW4
CLP-AFW4	S-AFW5
CLP-MWS/AFW1	S-AFW6
CLP-MWS/AFW2	S-AFW7
Drainage Depression	S-AFW8
DD-AOW1	S-EW1
DD-AOW2	S-EW/MWS1
DD-AOW3	S-MWS/AFW1
DD-MWS/AFW1	S-MWS/AFW2
Quartz/Rocky Plain	S-MWS1
QRP-AFW1	S-MWS2
QRP-AFW2	S-MWS3
QRP-AFW3	S-MWS4
QRP-AFW4	S-MWS5
QRP-AFW5	S-MWS6
QRP-AFW6	S-MWS7
QRP-AFW7	S-MWS19
QRP-AFW10	S-RMNV1
QRP-CFW1	S-RMNV2
QRP-AOW1	S-RMNV3
QRP-EW1	S-RMNV4
QRP-MWS1	Sand Dune
	SD-EW/MWS1

Botanica Consulting	
Vegetation Communities White Cliffs Road survey area Map 15 Gold Road Resources Ltd	
Date: 12/11/2015	Projection: MGA_Zone51 (GDA96)
Author: Pat Harton	
Office: Kalgoorlie	
Scale: 1:25000	



442,000 mE 443,000 mE 444,000 mE 445,000 mE 446,000 mE 447,000 mE 448,000 mE 449,000 mE 450,000 mE 451,000 mE

6,836,000 mN
6,835,000 mN
6,834,000 mN
6,833,000 mN
6,832,000 mN
6,831,000 mN
6,830,000 mN



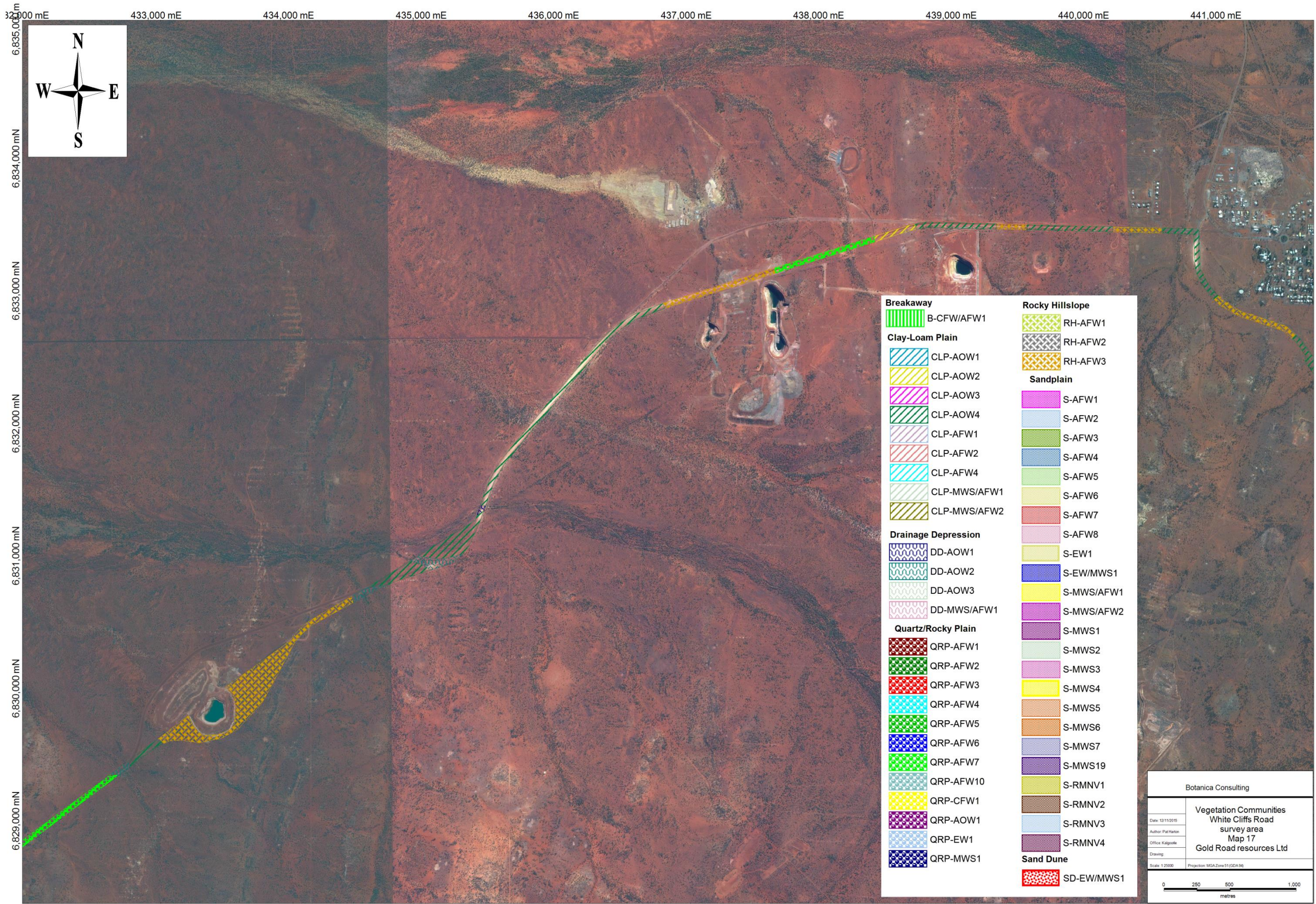
- | | | | |
|----------------------------|--------------|------------------------|------------|
| Breakaway | B-CFW/AFW1 | Rocky Hillslope | RH-AFW1 |
| Clay-Loam Plain | CLP-AOW1 | RH-AFW2 | |
| | CLP-AOW2 | RH-AFW3 | |
| | CLP-AOW3 | Sandplain | S-AFW1 |
| | CLP-AOW4 | | S-AFW2 |
| | CLP-AFW1 | | S-AFW3 |
| | CLP-AFW2 | | S-AFW4 |
| | CLP-AFW4 | | S-AFW5 |
| | CLP-MWS/AFW1 | | S-AFW6 |
| | CLP-MWS/AFW2 | | S-AFW7 |
| Drainage Depression | | | S-AFW8 |
| | DD-AOW1 | | S-EW1 |
| | DD-AOW2 | | S-EW/MWS1 |
| | DD-AOW3 | | S-MWS/AFW1 |
| | DD-MWS/AFW1 | | S-MWS/AFW2 |
| Quartz/Rocky Plain | | | S-MWS1 |
| | QRP-AFW1 | | S-MWS2 |
| | QRP-AFW2 | | S-MWS3 |
| | QRP-AFW3 | | S-MWS4 |
| | QRP-AFW4 | | S-MWS5 |
| | QRP-AFW5 | | S-MWS6 |
| | QRP-AFW6 | | S-MWS7 |
| | QRP-AFW7 | | S-MWS19 |
| | QRP-AFW10 | | S-RMNV1 |
| | QRP-CFW1 | | S-RMNV2 |
| | QRP-AOW1 | | S-RMNV3 |
| | QRP-EW1 | | S-RMNV4 |
| | QRP-MWS1 | Sand Dune | |
| | | | SD-EW/MWS1 |

Botanica Consulting

Vegetation Communities
White Cliffs Road
survey area
Map 16
Gold Road Resources Ltd

Date: 12/11/2015
Author: Pat Harlan
Office: Kalgoorlie
Drawing:
Scale: 1:25000
Projection: MGA Zone 51 (GDA96)

0 250 500 1,000
metres



432,000 mE 433,000 mE 434,000 mE 435,000 mE 436,000 mE 437,000 mE 438,000 mE 439,000 mE 440,000 mE 441,000 mE

6,835,000 mN
6,834,000 mN
6,833,000 mN
6,832,000 mN
6,831,000 mN
6,830,000 mN
6,829,000 mN



Breakaway	B-CFW/AFW1	Rocky Hillslope	RH-AFW1
Clay-Loam Plain	CLP-AOW1	RH-AFW2	RH-AFW3
	CLP-AOW2	Sandplain	S-AFW1
	CLP-AOW3	S-AFW2	S-AFW3
	CLP-AOW4	S-AFW4	S-AFW5
	CLP-AFW1	S-AFW6	S-AFW7
	CLP-AFW2	S-AFW8	S-EW1
	CLP-AFW4	S-EW/MWS1	S-MWS/AFW1
	CLP-MWS/AFW1	S-MWS/AFW2	S-MWS1
	CLP-MWS/AFW2	S-MWS2	S-MWS3
Drainage Depression	DD-AOW1	S-MWS4	S-MWS5
	DD-AOW2	S-MWS6	S-MWS7
	DD-AOW3	S-MWS19	S-RMNV1
	DD-MWS/AFW1	S-RMNV2	S-RMNV3
Quartz/Rocky Plain	QRP-AFW1	S-RMNV4	Sand Dune
	QRP-AFW2	SD-EW/MWS1	
	QRP-AFW3		
	QRP-AFW4		
	QRP-AFW5		
	QRP-AFW6		
	QRP-AFW7		
	QRP-AFW10		
	QRP-CFW1		
	QRP-AOW1		
	QRP-EW1		
	QRP-MWS1		

Botanica Consulting	
Vegetation Communities White Cliffs Road survey area Map 17 Gold Road resources Ltd	
Date: 12/11/2015	
Author: Pat Martin	
Office: Kalgoorlie	
Scale: 1:25000	Projection: MGA Zone 51 (GDA 94)
0 250 500 1,000 metres	