

413,000 mE    414,000 mE    415,000 mE    416,000 mE    417,000 mE    418,000 mE    419,000 mE    420,000 mE    421,000 mE    422,000 mE

6,824,000 mN  
6,823,000 mN  
6,822,000 mN  
6,821,000 mN  
6,820,000 mN  
6,819,000 mN  
6,818,000 mN



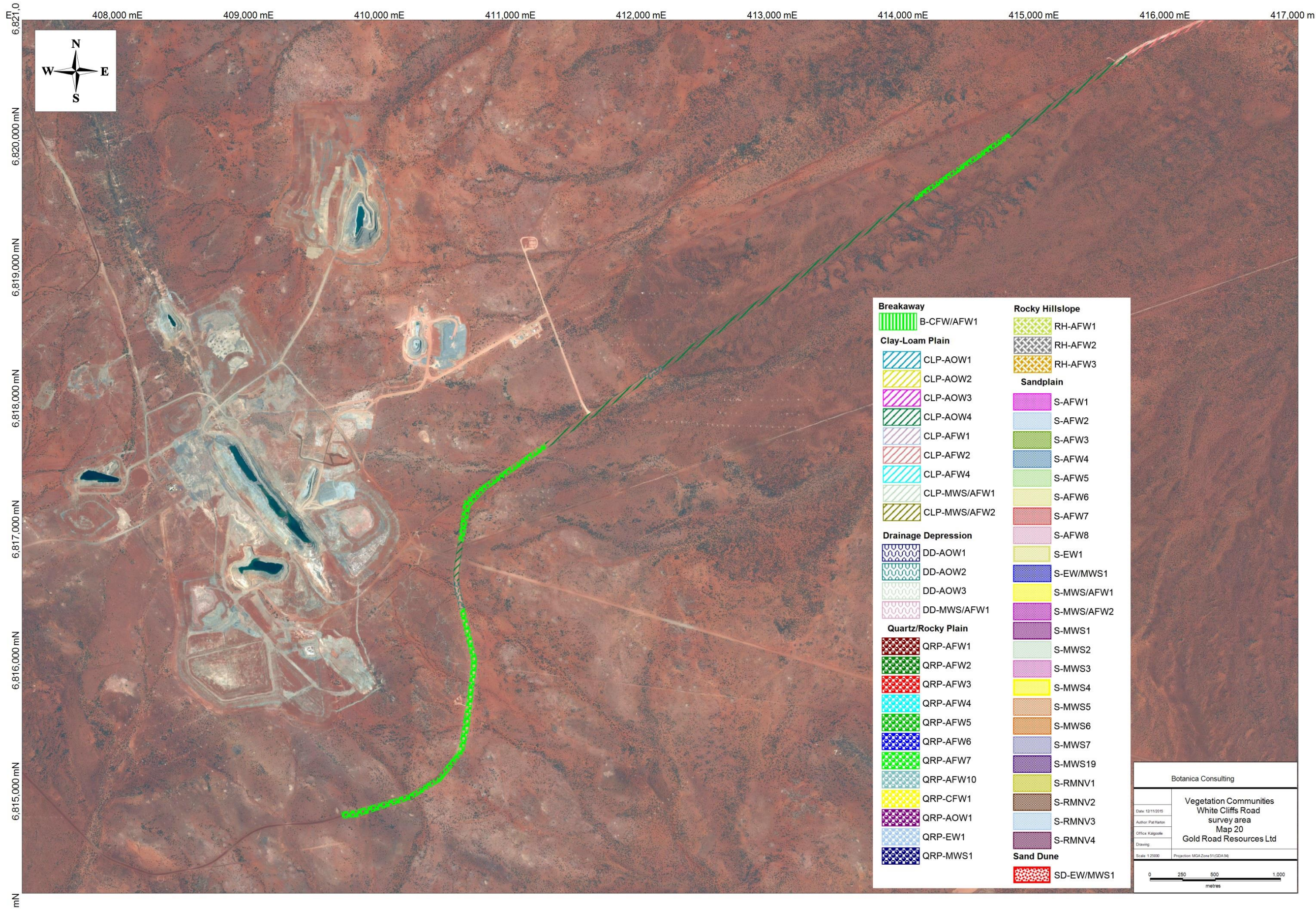
<b>Breakaway</b>	B-CFW/AFW1	<b>Rocky Hillslope</b>	RH-AFW1
<b>Clay-Loam Plain</b>	CLP-AOW1	RH-AFW2	RH-AFW3
	CLP-AOW2	<b>Sandplain</b>	
	CLP-AOW3	S-AFW1	S-AFW2
	CLP-AOW4	S-AFW3	S-AFW4
	CLP-AFW1	S-AFW5	S-AFW6
	CLP-AFW2	S-AFW7	S-AFW8
	CLP-AFW4	S-EW1	S-EW/MWS1
	CLP-MWS/AFW1	S-MWS/AFW1	S-MWS/AFW2
	CLP-MWS/AFW2	S-MWS1	S-MWS2
<b>Drainage Depression</b>	DD-AOW1	S-MWS3	S-MWS4
	DD-AOW2	S-MWS5	S-MWS6
	DD-AOW3	S-MWS7	S-MWS19
	DD-MWS/AFW1	S-RMNV1	S-RMNV2
<b>Quartz/Rocky Plain</b>	QRP-AFW1	S-RMNV3	S-RMNV4
	QRP-AFW2	<b>Sand Dune</b>	
	QRP-AFW3	SD-EW/MWS1	
	QRP-AFW4		
	QRP-AFW5		
	QRP-AFW6		
	QRP-AFW7		
	QRP-AFW10		
	QRP-CFW1		
	QRP-AOW1		
	QRP-EW1		
	QRP-MWS1		

Botanica Consulting

**Vegetation Communities  
White Cliffs Road  
survey area  
Map 19**

Gold Road Resources Ltd

Scale: 1:25000    Projection: MGA\_Zone51 (GDA36)



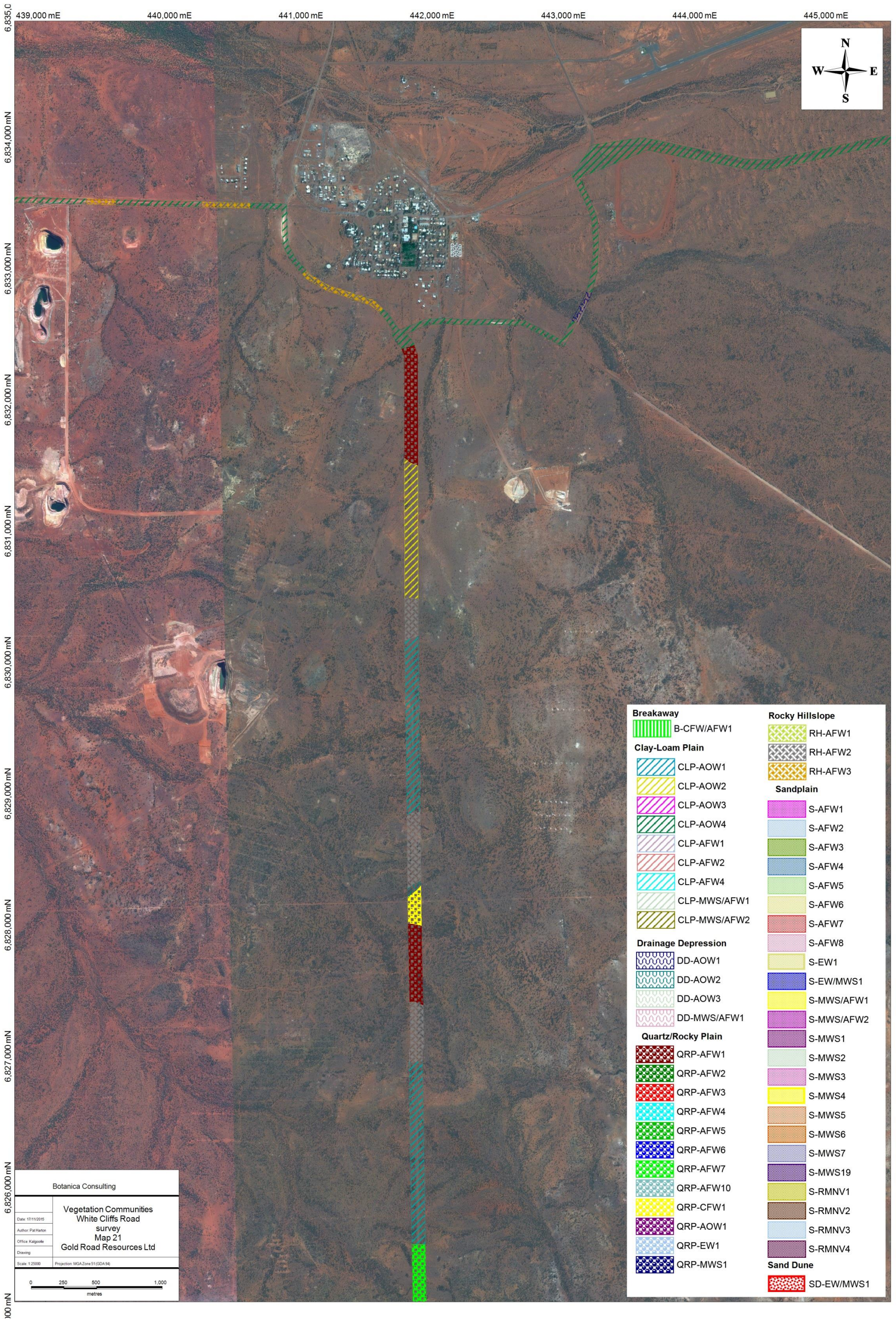
408,000 mE 409,000 mE 410,000 mE 411,000 mE 412,000 mE 413,000 mE 414,000 mE 415,000 mE 416,000 mE 417,000 mE

6,821,0 mN  
6,820,000 mN  
6,819,000 mN  
6,818,000 mN  
6,817,000 mN  
6,816,000 mN  
6,815,000 mN  
mN



<b>Breakaway</b>	B-CFW/AFW1	<b>Rocky Hillslope</b>	RH-AFW1
<b>Clay-Loam Plain</b>	CLP-AOW1	RH-AFW2	RH-AFW3
	CLP-AOW2	<b>Sandplain</b>	S-AFW1
	CLP-AOW3		S-AFW2
	CLP-AOW4		S-AFW3
	CLP-AFW1		S-AFW4
	CLP-AFW2		S-AFW5
	CLP-AFW4		S-AFW6
	CLP-MWS/AFW1		S-AFW7
	CLP-MWS/AFW2		S-AFW8
<b>Drainage Depression</b>	DD-AOW1		S-EW1
	DD-AOW2		S-EW/MWS1
	DD-AOW3		S-MWS/AFW1
	DD-MWS/AFW1		S-MWS/AFW2
<b>Quartz/Rocky Plain</b>	QRP-AFW1		S-MWS1
	QRP-AFW2		S-MWS2
	QRP-AFW3		S-MWS3
	QRP-AFW4		S-MWS4
	QRP-AFW5		S-MWS5
	QRP-AFW6		S-MWS6
	QRP-AFW7		S-MWS7
	QRP-AFW10		S-MWS19
	QRP-CFW1		S-RMNV1
	QRP-AOW1		S-RMNV2
	QRP-EW1		S-RMNV3
	QRP-MWS1		S-RMNV4
		<b>Sand Dune</b>	SD-EW/MWS1

Botanica Consulting	
Vegetation Communities White Cliffs Road survey area Map 20 Gold Road Resources Ltd	
Date: 12/11/2015	
Author: Pat Martin	
Office: Kalgoorlie	
Scale: 1:2500	Projection: MGA Zone 51 (GDA 94)
0 250 500 1,000 metres	



439,000 mE      440,000 mE      441,000 mE      442,000 mE      443,000 mE      444,000 mE      445,000 mE

6,835,000 mN

6,834,000 mN

6,833,000 mN

6,832,000 mN

6,831,000 mN

6,830,000 mN

6,829,000 mN

6,828,000 mN

6,827,000 mN

6,826,000 mN

6,825,000 mN

6,824,000 mN

6,823,000 mN

6,822,000 mN

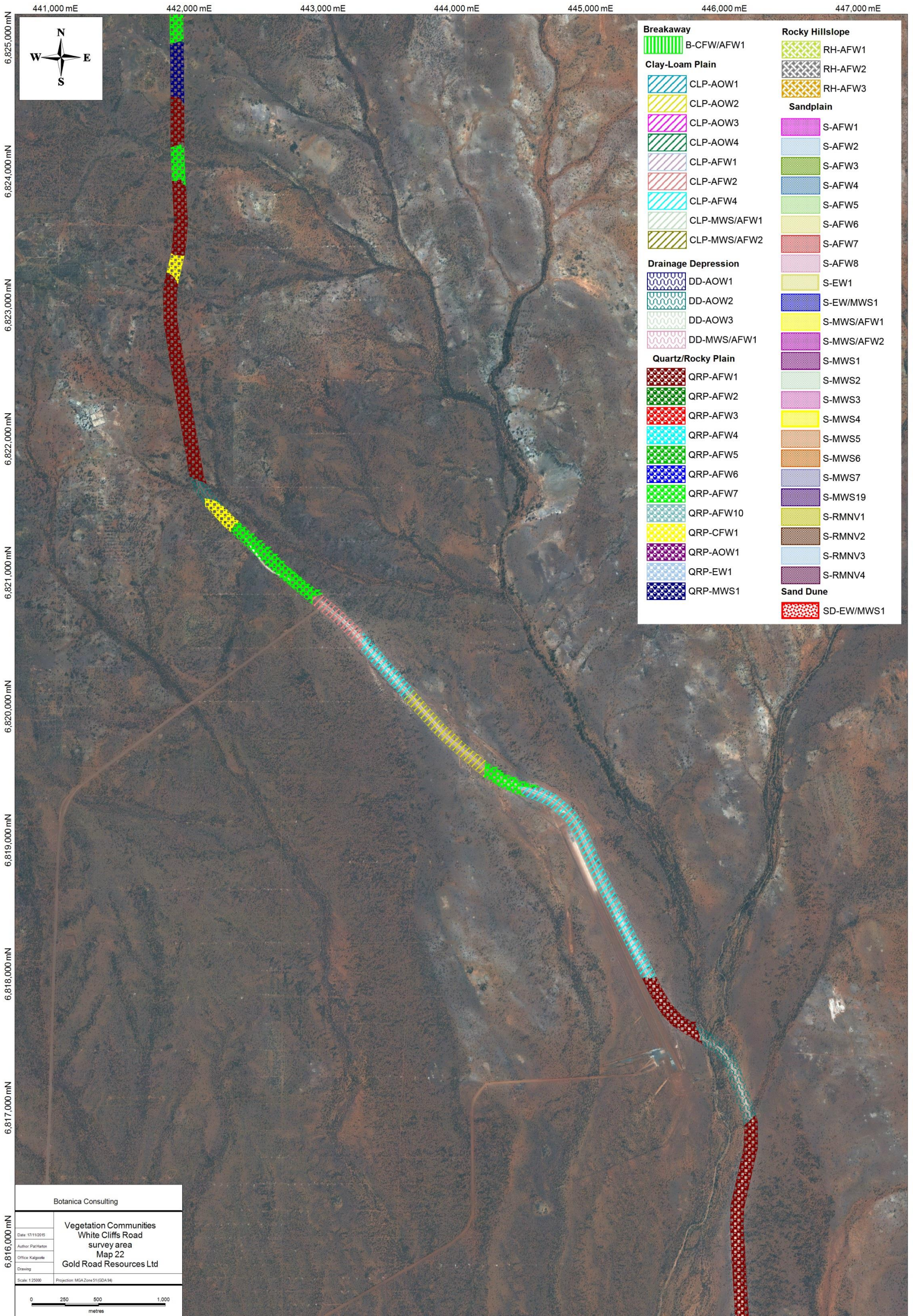
6,821,000 mN

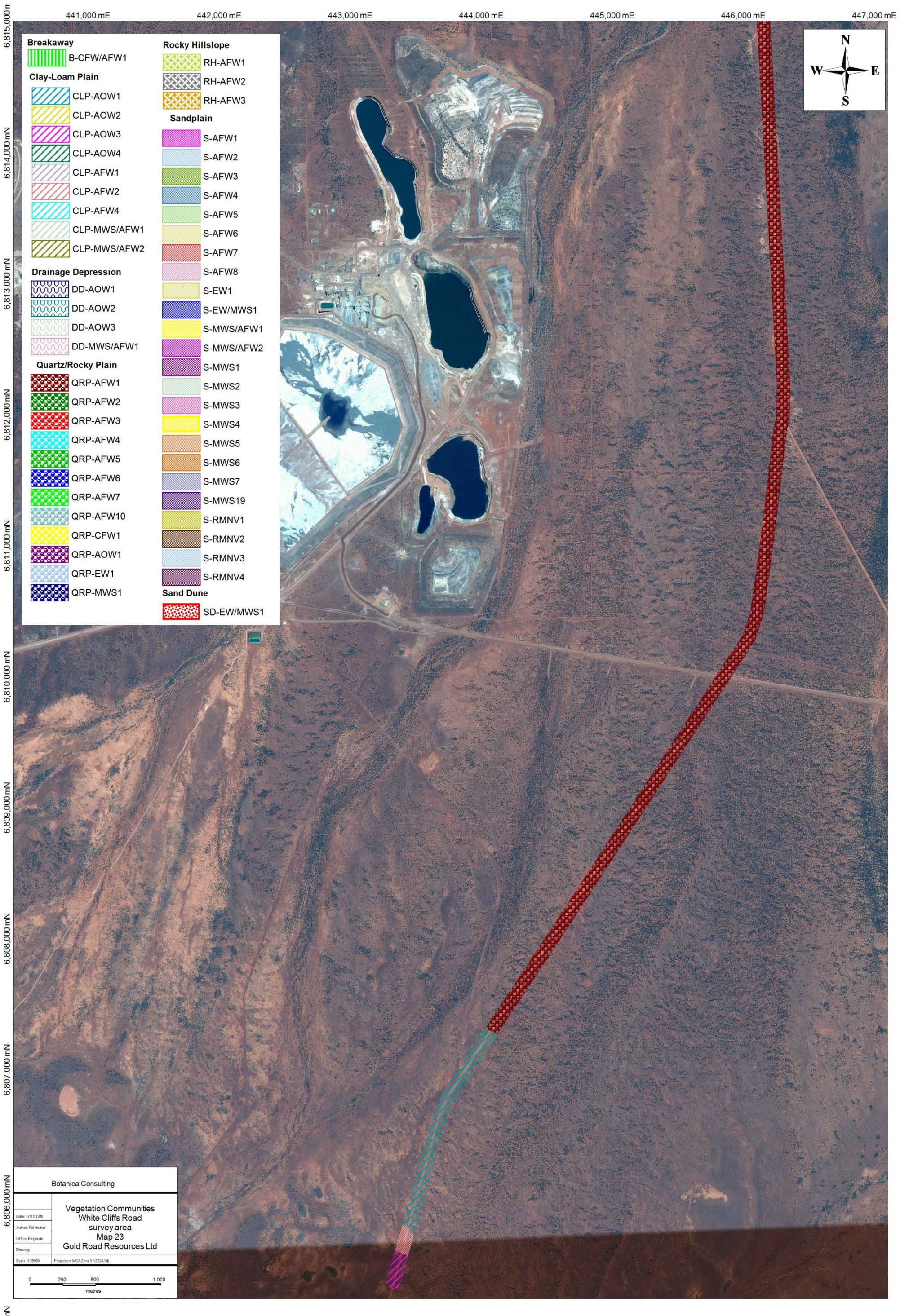
<b>Breakaway</b>	B-CFW/AFW1	<b>Rocky Hillslope</b>	RH-AFW1
<b>Clay-Loam Plain</b>	CLP-AOW1	RH-AFW2	RH-AFW3
	CLP-AOW2	<b>Sandplain</b>	
	CLP-AOW3	S-AFW1	S-AFW2
	CLP-AOW4	S-AFW3	S-AFW4
	CLP-AFW1	S-AFW5	S-AFW6
	CLP-AFW2	S-AFW7	S-AFW8
	CLP-AFW4	S-EW1	S-EW/MWS1
	CLP-MWS/AFW1	S-MWS/AFW1	S-MWS/AFW2
	CLP-MWS/AFW2	S-MWS1	S-MWS2
<b>Drainage Depression</b>	DD-AOW1	S-MWS3	S-MWS4
	DD-AOW2	S-MWS5	S-MWS6
	DD-AOW3	S-MWS7	S-MWS19
	DD-MWS/AFW1	S-RMNV1	S-RMNV2
<b>Quartz/Rocky Plain</b>	QRP-AFW1	S-RMNV3	S-RMNV4
	QRP-AFW2	<b>Sand Dune</b>	
	QRP-AFW3	SD-EW/MWS1	
	QRP-AFW4		
	QRP-AFW5		
	QRP-AFW6		
	QRP-AFW7		
	QRP-AFW10		
	QRP-CFW1		
	QRP-AOW1		
	QRP-EW1		
	QRP-MWS1		

Botanica Consulting

**Vegetation Communities**  
White Cliffs Road  
survey  
Map 21  
Gold Road Resources Ltd

Date: 17/11/2015  
Author: Pat Hutton  
Office: Kalgoorlie  
Drawing:  
Scale: 1:25000      Projection: MGA, Zone 51 (GDA 94)





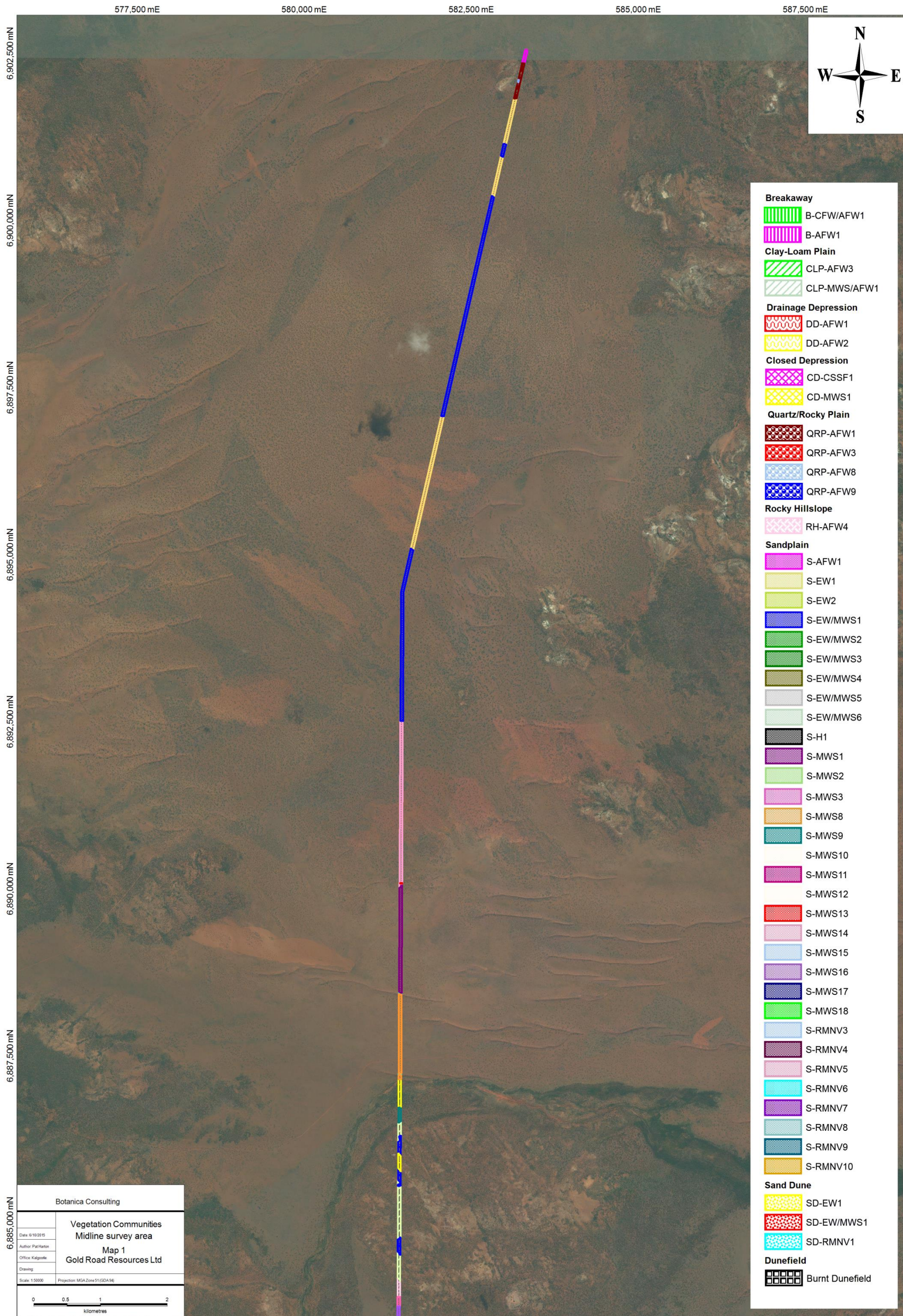
Botanica Consulting

**Vegetation Communities**  
White Cliffs Road  
survey area  
Map 23  
Gold Road Resources Ltd

Date: 17/11/2015  
Author: Pat Hutton  
Office: Kalgoorlie  
Drawing:  
Scale: 1:2500  
Projection: MGA Zone 51 (GDA 94)

0 250 500 1,000  
metres

**Midline Survey Area**



- Breakaway**
  - B-CFW/AFW1
  - B-AFW1
- Clay-Loam Plain**
  - CLP-AFW3
  - CLP-MWS/AFW1
- Drainage Depression**
  - DD-AFW1
  - DD-AFW2
- Closed Depression**
  - CD-CSSF1
  - CD-MWS1
- Quartz/Rocky Plain**
  - QRP-AFW1
  - QRP-AFW3
  - QRP-AFW8
  - QRP-AFW9
- Rocky Hillslope**
  - RH-AFW4
- Sandplain**
  - S-AFW1
  - S-EW1
  - S-EW2
  - S-EW/MWS1
  - S-EW/MWS2
  - S-EW/MWS3
  - S-EW/MWS4
  - S-EW/MWS5
  - S-EW/MWS6
  - S-H1
  - S-MWS1
  - S-MWS2
  - S-MWS3
  - S-MWS8
  - S-MWS9
  - S-MWS10
  - S-MWS11
  - S-MWS12
  - S-MWS13
  - S-MWS14
  - S-MWS15
  - S-MWS16
  - S-MWS17
  - S-MWS18
  - S-RMNV3
  - S-RMNV4
  - S-RMNV5
  - S-RMNV6
  - S-RMNV7
  - S-RMNV8
  - S-RMNV9
  - S-RMNV10
- Sand Dune**
  - SD-EW1
  - SD-EW/MWS1
  - SD-RMNV1
- Dunefield**
  - Burnt Dunefield

Botanica Consulting	
Vegetation Communities Midline survey area	
Date: 6/10/2015	Map 1
Author: Pat Harton	Gold Road Resources Ltd
Office: Kalgoorlie	
Drawing:	
Scale: 1:50000	Projection: MGA Zone 51 (GDA 94)

