

577,500 mE

580,000 mE

582,500 mE

585,000 mE

587,500 mE

6,882,500 mN

6,880,000 mN

6,877,500 mN

6,875,000 mN

6,872,500 mN

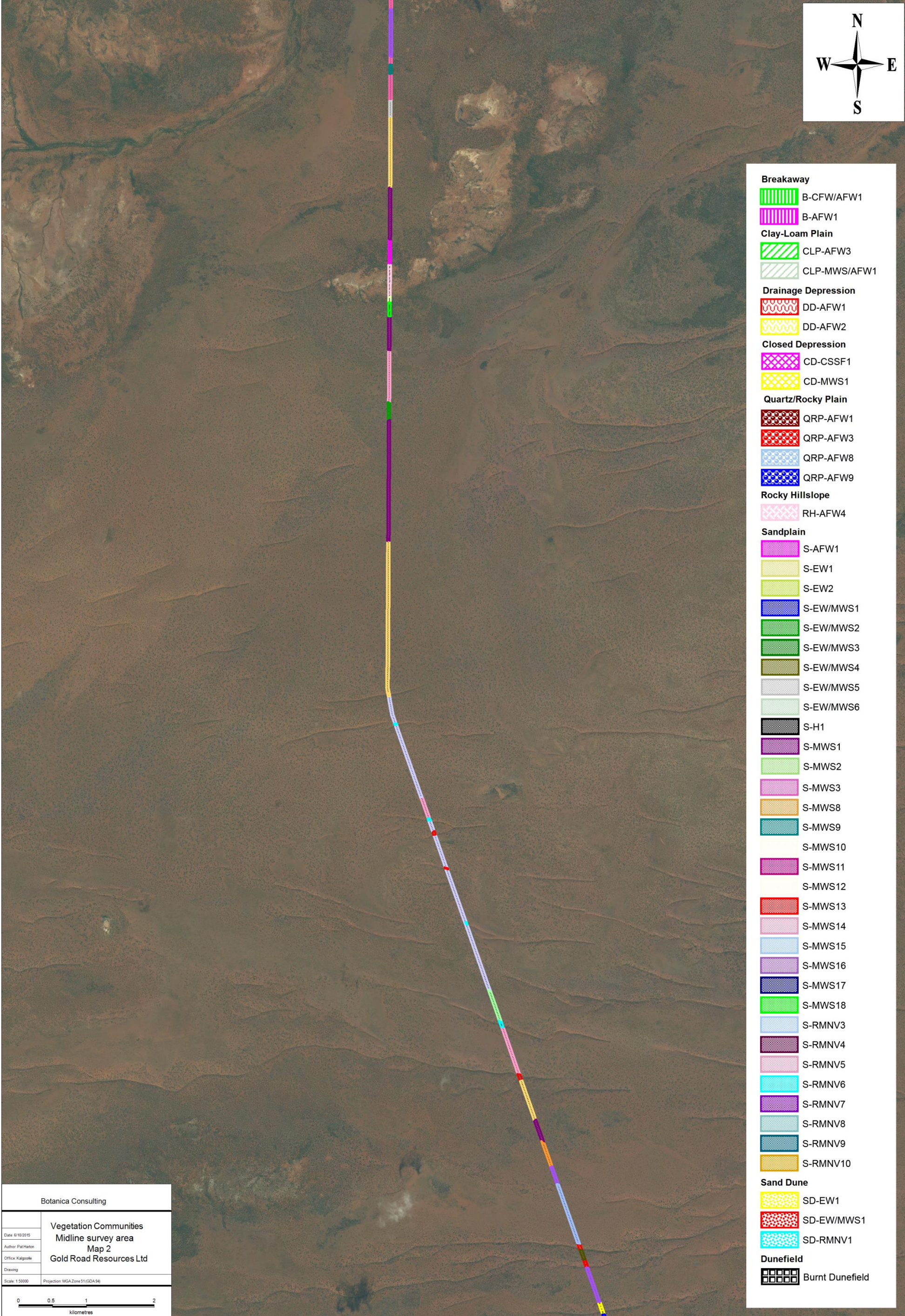
6,870,000 mN

6,867,500 mN

6,865,000 mN



- Breakaway**
- B-CFW/AFW1
- B-AFW1
- Clay-Loam Plain**
- CLP-AFW3
- CLP-MWS/AFW1
- Drainage Depression**
- DD-AFW1
- DD-AFW2
- Closed Depression**
- CD-CSSF1
- CD-MWS1
- Quartz/Rocky Plain**
- QRP-AFW1
- QRP-AFW3
- QRP-AFW8
- QRP-AFW9
- Rocky Hillslope**
- RH-AFW4
- Sandplain**
- S-AFW1
- S-EW1
- S-EW2
- S-EW/MWS1
- S-EW/MWS2
- S-EW/MWS3
- S-EW/MWS4
- S-EW/MWS5
- S-EW/MWS6
- S-H1
- S-MWS1
- S-MWS2
- S-MWS3
- S-MWS8
- S-MWS9
- S-MWS10
- S-MWS11
- S-MWS12
- S-MWS13
- S-MWS14
- S-MWS15
- S-MWS16
- S-MWS17
- S-MWS18
- S-RMNV3
- S-RMNV4
- S-RMNV5
- S-RMNV6
- S-RMNV7
- S-RMNV8
- S-RMNV9
- S-RMNV10
- Sand Dune**
- SD-EW1
- SD-EW/MWS1
- SD-RMNV1
- Dunefield**
- Burnt Dunefield



Botanica Consulting

Vegetation Communities
Midline survey area
Map 2
Gold Road Resources Ltd

Date: 6/10/2015
Author: Pat Harton
Office: Kalgoorlie
Drawing
Scale: 1:50000
Projection: MGA Zone 51 (GDA 94)

0 0.5 1 2
kilometres

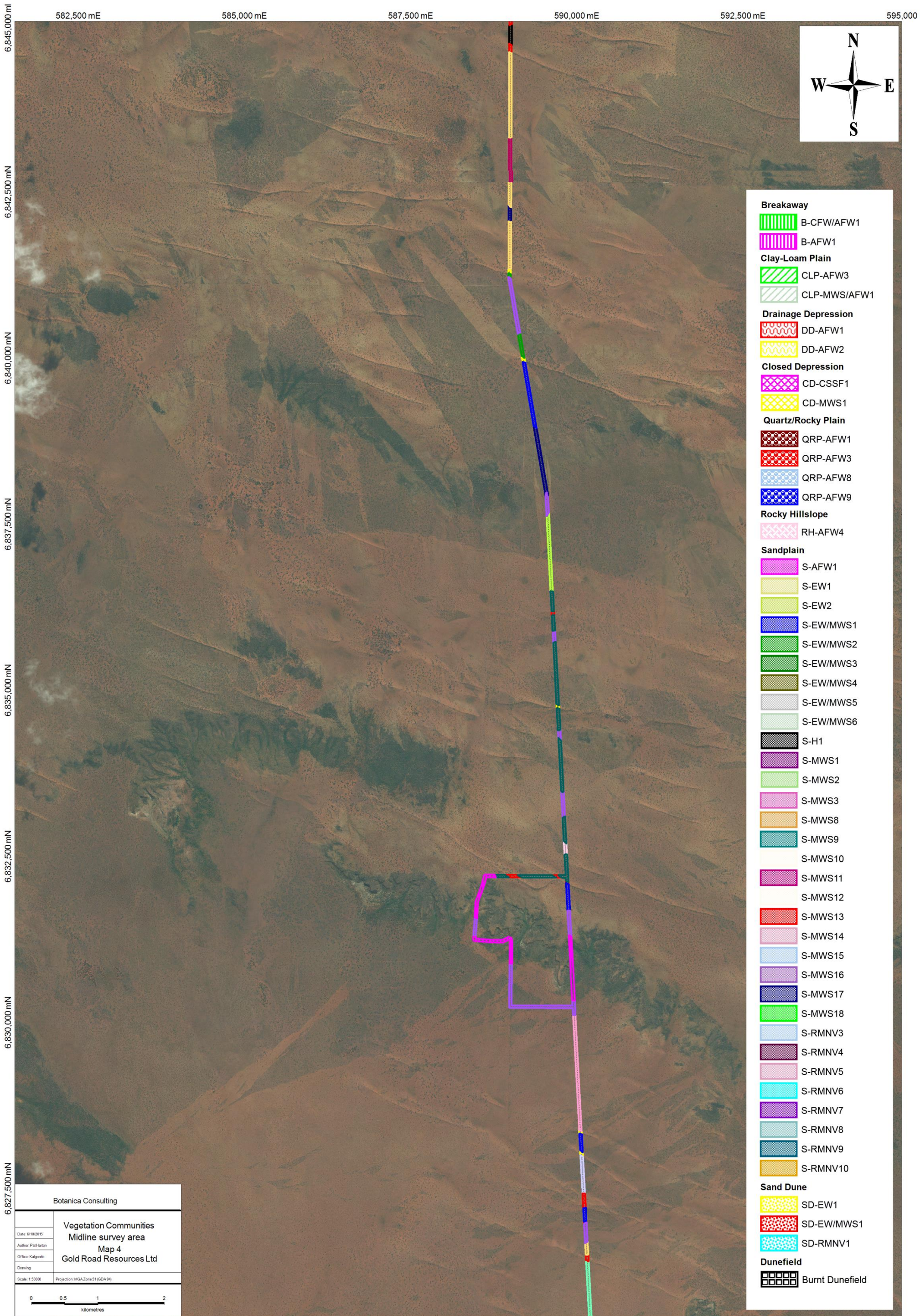


Breakaway	
	B-CFW/AFW1
	B-AFW1
Clay-Loam Plain	
	CLP-AFW3
	CLP-MWS/AFW1
Drainage Depression	
	DD-AFW1
	DD-AFW2
Closed Depression	
	CD-CSSF1
	CD-MWS1
Quartz/Rocky Plain	
	QRP-AFW1
	QRP-AFW3
	QRP-AFW8
	QRP-AFW9
Rocky Hillslope	
	RH-AFW4
Sandplain	
	S-AFW1
	S-EW1
	S-EW2
	S-EW/MWS1
	S-EW/MWS2
	S-EW/MWS3
	S-EW/MWS4
	S-EW/MWS5
	S-EW/MWS6
	S-H1
	S-MWS1
	S-MWS2
	S-MWS3
	S-MWS8
	S-MWS9
	S-MWS10
	S-MWS11
	S-MWS12
	S-MWS13
	S-MWS14
	S-MWS15
	S-MWS16
	S-MWS17
	S-MWS18
	S-RMNV3
	S-RMNV4
	S-RMNV5
	S-RMNV6
	S-RMNV7
	S-RMNV8
	S-RMNV9
	S-RMNV10
Sand Dune	
	SD-EW1
	SD-EW/MWS1
	SD-RMNV1
Dunefield	
	Burnt Dunefield

Botanica Consulting

Vegetation Communities
Midline survey area
Map 3
Gold Road Resources Ltd

Date: 6/10/2015
Author: Pat Harlan
Office: Kalgoorlie
Drawing
Scale: 1:50000
Projection: MGA Zone 51 (GDA 94)



- Breakaway**
- B-CFW/AFW1
- B-AFW1
- Clay-Loam Plain**
- CLP-AFW3
- CLP-MWS/AFW1
- Drainage Depression**
- DD-AFW1
- DD-AFW2
- Closed Depression**
- CD-CSSF1
- CD-MWS1
- Quartz/Rocky Plain**
- QRP-AFW1
- QRP-AFW3
- QRP-AFW8
- QRP-AFW9
- Rocky Hillslope**
- RH-AFW4
- Sandplain**
- S-AFW1
- S-EW1
- S-EW2
- S-EW/MWS1
- S-EW/MWS2
- S-EW/MWS3
- S-EW/MWS4
- S-EW/MWS5
- S-EW/MWS6
- S-H1
- S-MWS1
- S-MWS2
- S-MWS3
- S-MWS8
- S-MWS9
- S-MWS10
- S-MWS11
- S-MWS12
- S-MWS13
- S-MWS14
- S-MWS15
- S-MWS16
- S-MWS17
- S-MWS18
- S-RMNV3
- S-RMNV4
- S-RMNV5
- S-RMNV6
- S-RMNV7
- S-RMNV8
- S-RMNV9
- S-RMNV10
- Sand Dune**
- SD-EW1
- SD-EW/MWS1
- SD-RMNV1
- Dunefield**
- Burnt Dunefield

Botanica Consulting

Vegetation Communities
Midline survey area
Map 4
Gold Road Resources Ltd

Date: 6/10/2015
 Author: Pat Harton
 Office: Kalgoorlie
 Drawing:
 Scale: 1:50000
 Projection: MGA Zone 51 (GDA 94)

0 0.5 1 2
 kilometres

N

585,000 mE

587,500 mE

590,000 mE

592,500 mE

595,000 mE

6,825,000 mN

6,822,500 mN

6,820,000 mN

6,817,500 mN

6,815,000 mN

6,812,500 mN

6,810,000 mN

6,807,500 mN



- Breakaway**
- B-CFW/AFW1
- B-AFW1
- Clay-Loam Plain**
- CLP-AFW3
- CLP-MWS/AFW1
- Drainage Depression**
- DD-AFW1
- DD-AFW2
- Closed Depression**
- CD-CSSF1
- CD-MWS1
- Quartz/Rocky Plain**
- QRP-AFW1
- QRP-AFW3
- QRP-AFW8
- QRP-AFW9
- Rocky Hillslope**
- RH-AFW4
- Sandplain**
- S-AFW1
- S-EW1
- S-EW2
- S-EW/MWS1
- S-EW/MWS2
- S-EW/MWS3
- S-EW/MWS4
- S-EW/MWS5
- S-EW/MWS6
- S-H1
- S-MWS1
- S-MWS2
- S-MWS3
- S-MWS8
- S-MWS9
- S-MWS10
- S-MWS11
- S-MWS12
- S-MWS13
- S-MWS14
- S-MWS15
- S-MWS16
- S-MWS17
- S-MWS18
- S-RMNV3
- S-RMNV4
- S-RMNV5
- S-RMNV6
- S-RMNV7
- S-RMNV8
- S-RMNV9
- S-RMNV10
- Sand Dune**
- SD-EW1
- SD-EW/MWS1
- SD-RMNV1
- Dunefield**
- Burnt Dunefield

Botanica Consulting	
Vegetation Communities Midline survey area Map 5 Gold Road Resources Ltd	
Date: 6/10/2015	
Author: Pat Harton	
Office: Kalgoorlie	
Drawing:	
Scale: 1:50000	Projection: MGA Zone 51 (GDA 94)

582,500 mE

585,000 mE

587,500 mE

590,000 mE

592,500 mE

595,00

6,805,000 mN

6,802,500 mN

6,800,000 mN

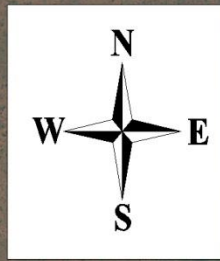
6,797,500 mN

6,795,000 mN

6,792,500 mN

6,790,000 mN

6,787,500 mN

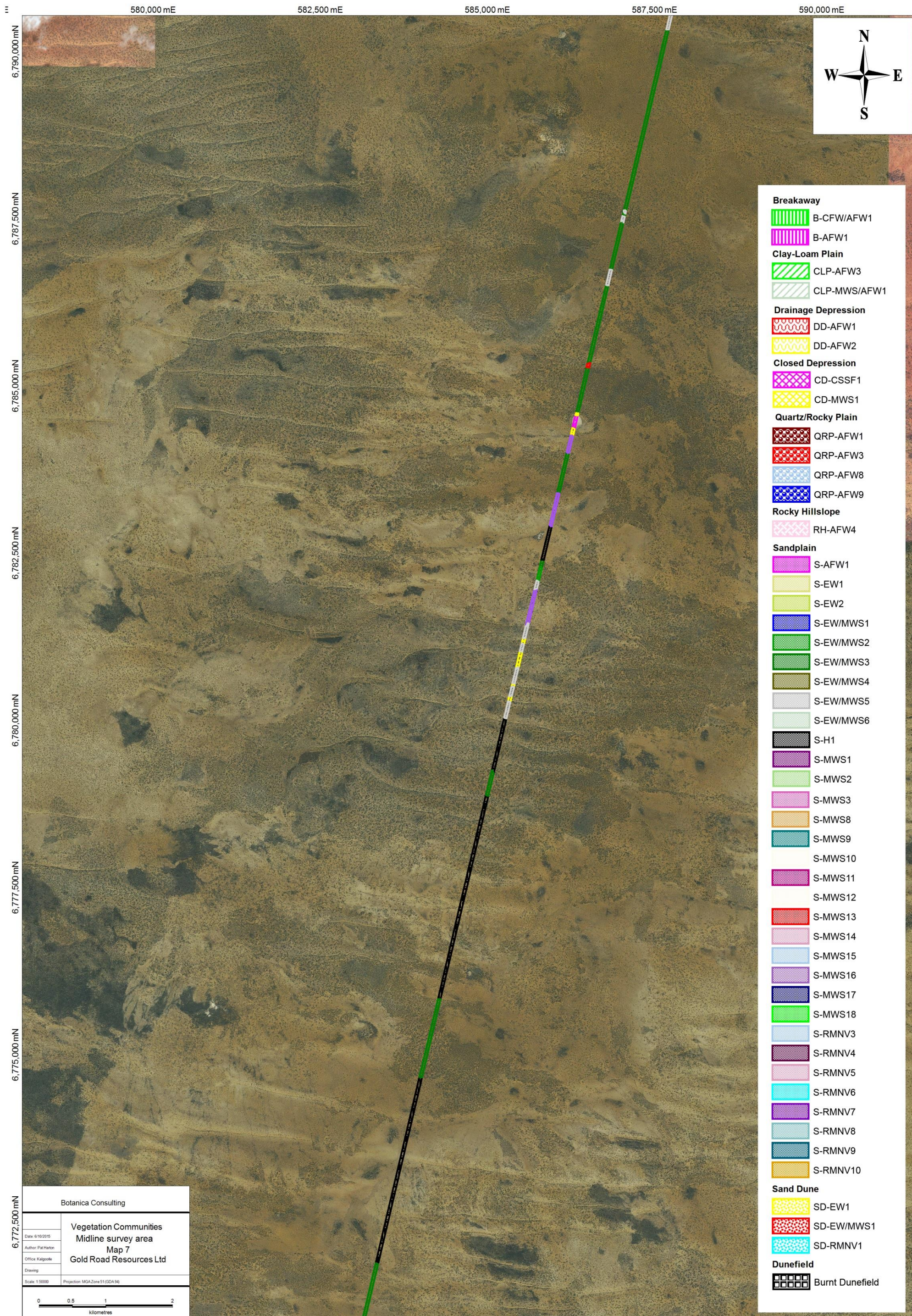


- Breakaway**
- B-CFW/AFW1
- B-AFW1
- Clay-Loam Plain**
- CLP-AFW3
- CLP-MWS/AFW1
- Drainage Depression**
- DD-AFW1
- DD-AFW2
- Closed Depression**
- CD-CSSF1
- CD-MWS1
- Quartz/Rocky Plain**
- QRP-AFW1
- QRP-AFW3
- QRP-AFW8
- QRP-AFW9
- Rocky Hillslope**
- RH-AFW4
- Sandplain**
- S-AFW1
- S-EW1
- S-EW2
- S-EW/MWS1
- S-EW/MWS2
- S-EW/MWS3
- S-EW/MWS4
- S-EW/MWS5
- S-EW/MWS6
- S-H1
- S-MWS1
- S-MWS2
- S-MWS3
- S-MWS8
- S-MWS9
- S-MWS10
- S-MWS11
- S-MWS12
- S-MWS13
- S-MWS14
- S-MWS15
- S-MWS16
- S-MWS17
- S-MWS18
- S-RMNV3
- S-RMNV4
- S-RMNV5
- S-RMNV6
- S-RMNV7
- S-RMNV8
- S-RMNV9
- S-RMNV10
- Sand Dune**
- SD-EW1
- SD-EW/MWS1
- SD-RMNV1
- Dunefield**
- Burnt Dunefield

Botanica Consulting

Vegetation Communities
Midline survey area
Map 6
Gold Road Resources Ltd

Date: 6/19/2015
Author: Pat Harlin
Office: Kalgoorlie
Drawing:
Scale: 1:50000
Projection: MGA, Zone 51 (GDA 94)



- Breakaway**
- B-CFW/AFW1
- B-AFW1
- Clay-Loam Plain**
- CLP-AFW3
- CLP-MWS/AFW1
- Drainage Depression**
- DD-AFW1
- DD-AFW2
- Closed Depression**
- CD-CSSF1
- CD-MWS1
- Quartz/Rocky Plain**
- QRP-AFW1
- QRP-AFW3
- QRP-AFW8
- QRP-AFW9
- Rocky Hillslope**
- RH-AFW4
- Sandplain**
- S-AFW1
- S-EW1
- S-EW2
- S-EW/MWS1
- S-EW/MWS2
- S-EW/MWS3
- S-EW/MWS4
- S-EW/MWS5
- S-EW/MWS6
- S-H1
- S-MWS1
- S-MWS2
- S-MWS3
- S-MWS8
- S-MWS9
- S-MWS10
- S-MWS11
- S-MWS12
- S-MWS13
- S-MWS14
- S-MWS15
- S-MWS16
- S-MWS17
- S-MWS18
- S-RMNV3
- S-RMNV4
- S-RMNV5
- S-RMNV6
- S-RMNV7
- S-RMNV8
- S-RMNV9
- S-RMNV10
- Sand Dune**
- SD-EW1
- SD-EW/MWS1
- SD-RMNV1
- Dunefield**
- Burnt Dunefield

Botanica Consulting	
Vegetation Communities	
Midline survey area	
Map 7	
Gold Road Resources Ltd	
Date: 6/10/2015	
Author: Pat Harlin	
Office: Kalgoorlie	
Drawing:	
Scale: 1:50000	Projection: MGA, Zone 51 (GDA 94)

577,500 mE 580,000 mE 582,500 mE 585,000 mE 587,500 mE

6,782,500 mN
6,780,000 mN
6,777,500 mN
6,775,000 mN
6,772,500 mN
6,770,000 mN
6,767,500 mN
6,765,000 mN



- Breakaway**
- B-CFW/AFW1
- B-AFW1
- Clay-Loam Plain**
- CLP-AFW3
- CLP-MWS/AFW1
- Drainage Depression**
- DD-AFW1
- DD-AFW2
- Closed Depression**
- CD-CSSF1
- CD-MWS1
- Quartz/Rocky Plain**
- QRP-AFW1
- QRP-AFW3
- QRP-AFW8
- QRP-AFW9
- Rocky Hillslope**
- RH-AFW4
- Sandplain**
- S-AFW1
- S-EW1
- S-EW2
- S-EW/MWS1
- S-EW/MWS2
- S-EW/MWS3
- S-EW/MWS4
- S-EW/MWS5
- S-EW/MWS6
- S-H1
- S-MWS1
- S-MWS2
- S-MWS3
- S-MWS8
- S-MWS9
- S-MWS10
- S-MWS11
- S-MWS12
- S-MWS13
- S-MWS14
- S-MWS15
- S-MWS16
- S-MWS17
- S-MWS18
- S-RMNV3
- S-RMNV4
- S-RMNV5
- S-RMNV6
- S-RMNV7
- S-RMNV8
- S-RMNV9
- S-RMNV10
- Sand Dune**
- SD-EW1
- SD-EW/MWS1
- SD-RMNV1
- Dunefield**
- Burnt Dunefield

Botanica Consulting

Vegetation Communities
Midline survey area
Map 8
Gold Road Resources Ltd

Date: 6/19/2015
Author: Pat Harton
Office: Kalgoorlie
Drawing:
Scale: 1:50000
Projection: MGA, Zone 51 (GDA 94)