

MOUNT GIBSON MINING LIMITED

**TARGETED SEARCH AT MT GIBSON
FOR THE DECLARED RARE FLORA
*DARWINIA MASONII***



VERSION 1

DECEMBER 2004

REPORT NO: 2004/227

DISCLAIMER

This document is published in accordance with and subject to an agreement between ATA Environmental (“ATA”) and the client for whom it has been prepared Mt Gibson Mining (“Client”) and is restricted to those issues that have been raised by the client in its engagement of ATA and prepared using the standard of skill and care ordinarily exercised by Environmental Scientists in the preparation of such Documents.

Any person or organisation that relies on or uses the document for purposes or reasons other than those agreed by ATA and the Client without first obtaining the prior written consent of ATA, does so entirely at their own risk and ATA denies all liability in tort, contract or otherwise for any loss, damage or injury of any kind whatsoever (whether in negligence or otherwise) that may be suffered as a consequence of relying on this Document for any purpose other than that agreed with the Client.

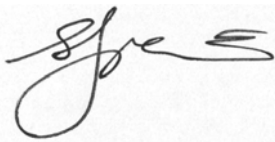
QUALITY ASSURANCE

ATA Environmental has implemented a comprehensive range of quality control measures on all aspects of the company’s operation and has Quality Assurance certification to ISO 9001.

An internal quality review process has been applied to each project task undertaken by us. Each document is carefully reviewed by core members of the consultancy team and signed off at Director level prior to issue to the client. Draft documents are submitted to the client for comment and acceptance prior to final production.

Document No: MGM-2004-002-DRF_001_sg_V1

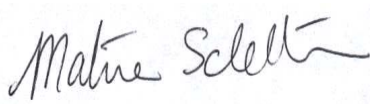
Report No: 2004/227



Checked by: Signed:

Name: Shaun Grein

Date: 22 December 2004



Approved by: Signed:

Name: Martine Scheltema

Date: 22 December 2004

TABLE OF CONTENTS

1. INTRODUCTION	1
2. DARWINIA MASONII.....	2
2.1 Conservation Significance	2
2.2 Ecology, Habitat and Distribution	2
3. TARGETED SURVEY METHODOLOGY	3
3.1 Approach to the Survey	3
4. RESULTS	4
4.1 Populations and Population Size.....	4
4.2 Vegetation Communities	6
4.3 Threatening Processes.....	7
5. CONCLUSIONS.....	8
REFERENCES	9

FIGURES

PLATES

APPENDIX

LIST OF FIGURES

1. Regional Location
2. Locations of *Darwinia masonii*

LIST OF PLATES

1. Mature *Darwinia masonii* plant
2. *Darwinia masonii*
3. *Darwinia masonii* on Banded Iron Formation (BIF)
4. *Darwinia masonii* on upper slopes of Iron Hill
5. *Darwinia masonii* seedlings on crest of Extension Hill
6. *Darwinia masonii* on upper slopes of Extension Hill
7. *Darwinia masonii* on upper slopes of Extension Hill South
8. *Darwinia masonii* on BIF on Iron Hill North
9. *Darwinia masonii* seedling on crest of Extension Hill
10. *Darwinia masonii* on BIF near crest of Iron Hill North
11. Burnt Thicket of *Allocasuarina acutivalvis* subsp. *prinsepiana* on western slopes of Mt Gibson
12. *Darwinia masonii* on BIF on upper slopes of Mt Gibson

APPENDIX

1. Location of *Darwinia masonii* and number of plants recorded (i.e. mature plants, senescent plants and seedlings)

1. INTRODUCTION

Mount Gibson Mining Limited is proposing to commence iron ore mining operations on specific sections of the Mt Gibson Ranges in the Mid West Region of Western Australia. The Mt Gibson Ranges are located approximately 350km north east of Perth, immediately adjacent to the Great Northern Highway between Wubin and Paynes Find (Figure 1).

The Mt Gibson Mining Ore Project is a combined hematite/magnetite open cut mining operation that will produce both direct shipping grade hematite ore and magnetite concentrate.

A number of flora and vegetation surveys have been previously undertaken at Mt Gibson (Muir Environmental 1995, Bennett 2000, Armstrong & Associates 2004).

It was established from the Muir Environmental (1995) and Bennett (2000) surveys that the gazetted Declared Rare Flora *Darwinia masonii*, which was listed as vulnerable under the Commonwealth *Environmental Protection Biodiversity Conservation Act 1999*, was recorded from the area.

Given the potential impacts of the Mt Gibson mining project on the *Darwinia masonii*, a botanical survey was undertaken Armstrong and Associates in Spring 2003 of ranges and hills within 50km of Mt Gibson with similar geology (banded ironstone formation [BIF] or chert) with a view to locating additional populations of *Darwinia masonii*. The vegetation at each of the ranges and hills was similar to that of the Mt Gibson area in the composition of dominant species, but differed slightly to greatly in the non dominant species in both composition and vegetation canopy cover. The hills and ranges inspected were more arid with lower canopy cover and a lower stature than at Mt Gibson. The sites that were visited by Armstrong and Associates (2004) were:

- Hills west of Mt Singleton and south of Ninghan Station;
- Hills north of Ninghan station;
- Hills west of Warro Well;
- Hills south of Warro Well; and
- Yandahnoo Hill.

Despite extensive searching, no additional populations of *Darwinia masonii* were located outside the Mt Gibson area (Armstrong and Associates, 2004). Therefore the species appears to be restricted to the Mt Gibson area.

In view of the apparently restricted distribution of *Darwinia masonii*, ATA Environmental was commissioned by Mt Gibson Mining Limited to conduct a detailed and definitive survey of the Mt Gibson area to define, as accurately as possible, the population size, distribution and age spectrum of *Darwinia masonii*, over the entirety of the Mt Gibson Mining lease area (Figure 1).

2. DARWINIA MASONII

2.1 Conservation Significance

Darwinia masonii (Mason's Darwinia) is classified by the Department of Conservation and Land Management (CALM) as a Declared Rare Flora (Endangered) and is afforded special protection under the *Wildlife Conservation Act 1950-1979*. *Darwinia masonii* is also classified Vulnerable under the *Commonwealth Environment Protection and Biodiversity Conservation Act 1999*.

2.2 Ecology, Habitat and Distribution

Darwinia masonii is described as an erect shrub 1.5 to 3m tall, with narrow leaves approximately 1cm long, which are almost triangular in cross-section. These leaves are closely crowded towards the ends of the branchlets. The flowering inflorescences are approximately 3cm in diameter and are surrounded by numerous spreading pinkish bracts that are pendulous on the ends of small branchlets. The bracts are broad at the base but narrow to a pointed apex with a distinct midrib. Each bract is approximately 2cm in length and 5mm wide at the base. Each tubular flower is about 5mm long with a style approximately 1.5cm in length with hairs below the stigma (Brown *et al.*, 1998).

Darwinia masonii has a very restricted known distribution, having only been recorded from the upper slopes (350m+ AHD), crests and ridges over the 6km length of the Mt Gibson Ranges, which are located approximately 80km northeast of Wubin.

Darwinia masonii has a known flowering period from April to November (Brown *et al.*, 1998). As the rainfall in the region is unreliable, *Darwinia masonii* is likely to respond opportunistically to rainfall events (i.e. tropical cyclonic summer rainfall events and southern winter cold fronts).

Contrary to comments by Brown *et al.* (1998) that *Darwinia masonii* will resprout from rootstock following fire, there was no evidence of this from the Mt Gibson Ranges (Armstrong and Associates, 2004). In fact the species appears to be fire sensitive. A wildfire burnt out a significant area in southern and eastern portions of the Ranges in January 2003. None of the *Darwinia masonii* plants burnt during this fire were observed to have survived during spring 2003 by Armstrong and Associates, 2004). Regeneration appears to be restricted exclusively to seed.

Based on field observations and the fact that many bird species are attracted to colourful inflorescences with potential sources of nectar, *Darwinia masonii* is most likely to be pollinated by birds.

3. TARGETED SURVEY METHODOLOGY

3.1 Approach to the Survey

In order to determine the overall extent of the *Darwinia masonii* population size and total number of plants, data was collected during a targeted field survey for the species. The targeted survey for *Darwinia masonii* was conducted over a three-week period between 26 June and 19 July 2004. The survey was conducted over two separate field trips, the first between 26 June and 9 July 2004 and the second between July 19 and July 26 2004. The timing of the survey coincided with the most favourable period for identifying *Darwinia masonii* from its flowering material (i.e. April to November (Brown *et al.*, 1998)).

The survey was conducted by Mr Shaun Grein, an experienced botanist from ATA Environmental with assistance from field assistant Miss Christine McCagh. As previous surveys for *Darwinia masonii* have indicated that the only known natural location for the species is on the upper slopes, hilltops and ridges of the Mt Gibson Range (Armstrong and Associates, 2004) and on stony soil upon lateritic hills (Muir, 1995), only these particular landforms were investigated during this targeted survey.

The survey methodology consisted of traversing parallel, east-west transects, between 10m and 40m wide (depending on the density of the associated vegetation) from the base and over the hill crest or ridge of each of the ten major hills in the Mt Gibson Ranges. The length of each surveyed transect ranged between 100m to 400m, depending on the extent of the hill or landform traversed. Wherever *Darwinia masonii* plants were identified, the location and number of each was recorded using a handheld Global Positioning System (GPS) in MGA 94 Zone 50 co-ordinates. Individual plants (or groups of plants) were tagged with flagging tape to avoid recounting. The number and location of all mature, seedlings and senescent *Darwinia masonii* plants were recorded (Appendix 1).

Each plant or group of plants (including seedlings and senescent plants killed by fire) recorded during the survey were plotted on 1:30,000 scale rectified orthophotograph of the study area.

4. RESULTS

4.1 Populations and Population Size

The ATA Environmental targeted survey undertaken in June and July 2004 recorded nine discrete populations of *Darwinia masonii* from the Mt Gibson Ranges study area (Figure 2). This is an increase on the seven populations estimated by Armstrong and Associates (2004) and a slight decrease on the ten populations recorded by Muir Environment (1995). Bennett Environmental Consulting (2000) also recorded nine populations. Discrete populations were defined using the CALM definition to delineate populations (i.e. 500m separation distance between populations). The small population recorded from Iron Hill South during the current survey was amalgamated with the Iron Hill population as it was calculated as being less than 500m from the Iron Hill population. The numbers of plants recorded from each population during the previous surveys of the Mt Gibson Ranges are shown in Table 1.

TABLE 1
POPULATION SIZES OF ELEVEN HILLS IN MT GIBSON RANGES
KNOWN TO SUPPORT *DARWINIA MASONII* FROM CURRENT AND
PREVIOUS STUDIES UNDERTAKEN (MUIR (1995), COATES (PERS.
COMM. 1996), BENNETT (2000), ARMSTRONG AND ASSOCIATES (2004)
AND THE CURRENT SURVEY (ATA ENVIRONMENTAL)

Name of Hill	Muir (1995)	Coates (pers. comm. 1996)	Bennett (2000)	*Armstrong and Associates (2004)	ATA (Current)
Extention North Hill	na	na	na	na	545 mature, 12 seedlings
Extention Hill	200	1676	60	200	1924 mature, 12 seedlings
Extention South Hill	na	1103	na	na	1874 mature, 26 seedlings
Iron Hill North	na	na	na	192	370 mature, 597 seedlings
Iron Hill Central	na	na	>100	na	586 mature, 33 seedlings
Iron Hill (Partially Burnt Jan 2003)	+200	na	na	185	1601 mature, 970 seedlings
Iron Hill South	na	na	na	75	na (population included as part of Iron Hill population)
Iron Hill East (Completely Burnt Jan 2003)	200	na	80-100	na	70 mature, 11 seedlings
Mt Gibson (Western Slopes Burnt Jan 2004)	21	44 (part survey only)	ca 2000	363	7021 mature, 61 seedlings
Mt Gibson South	na	824	na	177	324 mature, 1 seedling
TOTAL	+621	3647	~2260	1007	16032 (14307 mature, 1725 seedlings)

* Armstrong and Associates (2004) used the four previous flora/vegetation surveys to estimate the total population of *Darwinia masonii* in the Mount Gibson Ranges to be 6,107 plants. Armstrong's estimated population of each of the five known populations is shown in Table 2. The total is based on the greatest number reported per population

TABLE 2
ARMSTRONG AND ASSOCIATES (2004) ESTIMATED *DARWINIA MASONII* POPULATION SIZE FOR MT GIBSON RANGES

Population	Estimated Population at Mt Gibson
Extension Hill North/Extension Hill	1,676
South Extension Hill/Iron Hill Central	1,103
Iron Hill/Iron Hill South	260
Iron Hill East	200
Mt Gibson/ Mt Gibson South	2,868
TOTAL	6,107

ATA Environmental recorded a total of 16,573 *Darwinia masonii* plants during the current survey of the study area. This total is comprised of 14,307 mature plants, 1,725 seedlings and 541 plants that had been killed by fire. A table indicating the coordinates (in MGA 94 Zone 50) from where *Darwinia masonii* plants were recorded and number of plants (mature plants, seedlings and dead plants) from each location is provided in Appendix 1.

The largest population of *Darwinia masonii* was recorded on south-eastern extent of the Mt Gibson Ranges on Mt Gibson (7021 mature plants and 61 seedlings). Virtually all the plants recorded from this population were from the crest and eastern slopes of Mt Gibson as the western slopes have been burnt in the January 2003 fire. Due to time constraints and the difficulties in readily to discriminating between winter grass and seedlings, the burnt western slopes of Mt Gibson were not surveyed for presence of seedlings. Similarly, Iron Hill East which was almost entirely burnt during the January 2003 fire was not surveyed in detail for seedlings. The plants recorded (70 mature plants and 11 seedlings) from Iron Hill East were restricted to BIF outcrops that were protected from the fire.

Distribution of mature plants tended to be patchy throughout the study area and there were 865 records (30% of total number of records) of where only a single plant was recorded from a location (generally 20m x 20m in area) along a surveyed transect. The highest number of plants recorded from a single area (approximately 50m x 50m) was 228, of which were mature plants. The distribution of plants recorded during this investigation was restricted to the upper slopes (350m+ AHD) of the Mt Gibson Ranges.

A significant proportion of the *Darwinia masonii* plants recorded during the current survey (2004) were seedlings defined as generally <20cm in height with no flowering material (i.e. 1,704 or 10.6% of the total number of live plants). The majority of these seedlings appear to be less than 2 years old. Abundant germination was recorded from burnt areas along the southeast extent of both Iron Hill and Iron Hill North. More than half of the total seedlings recorded during this survey were identified from Iron Hill (i.e. 970 seedlings), where the east-facing slopes had only been partially burnt during the January 2003 wildfire. Much greater numbers of seedlings were recorded from

areas on the crests of hills in the Mt Gibson Ranges (i.e. Mt Gibson, Iron Hill North and Iron Hill) that had been disturbed by exploration drilling and fire than were from undisturbed areas on the slopes. Seedlings within the remainder of the study area were predominantly restricted to colonisation of areas disturbed through exploration drilling and construction of access tracks.

4.2 Vegetation Communities

The 2004 ATA Environmental targeted survey of the Mt Gibson Ranges recorded *Darwinia masonii* from eight vegetation communities within the study area. These vegetation communities were previously identified and mapped by Bennett Environmental Consulting (2000). They included one mallee, six thicket and one heath community:

- T1 Dense Thicket of mixed species dominated by *Acacia* species, *Allocasuarina acutivalvis* subsp. *prinsepiana*, *Calycopeplus paucifolius* and *Melaleuca nematophylla* over Low Shrubland in jaspilite rocks and pockets of loam.
- T2 Dense Thicket dominated by *Acacia assimilis*, *A. stereophylla* var. *stereophylla*, *A. ramulosa* and *Allocasuarina acutivalvis* subsp. *prinsepiana* over Low Shrubland of *Acacia acuaria*, *Hemigenia* sp. Paynes Find and *Baeckea* affin. *cryptandroides* in loam with scattered rocks on the surface.
- T3 Dense Thicket dominated by *Acacia assimilis*, *Allocasuarina acutivalvis* subsp. *prinsepiana* and *Melaleuca nematophylla* over Low Shrubland of *Hemigenia* sp. Paynes Find and *Hibbertia crassifolia* in loam pockets in jaspilite rocks.
- T4 Dense Thicket of *Allocasuarina acutivalvis* subsp. *prinsepiana* with occasional *Eucalyptus oldfieldii* over an Open Scrub of *Acacia* species over Open Shrubland of *Hemigenia* sp. Paynes Find or Open Herbs of *Xanthosia bungei*.
- T5 Thicket of *Allocasuarina acutivalvis* subsp. *prinsepiana* and *Grevillea obliquistigma* with emergent *Callitris glaucophylla* over Low Shrubland dominated by *Darwinia masonii*, *Hibbertia crassifolia*, *Melaleuca radula*, and *Philotheca brucei* over Herbs of *Xanthosia brucei* in loam pockets in dense jaspilite rocks.
- T6 Thicket of *Acacia acuaria* and *Acacia stowardii* over Low Shrubland of mixed species with large numbers of *Darwinia masonii* in loam with abundant rocks on the surface.
- M4 Very Low Open Shrub Mallee of *Eucalyptus leptopoda* with emergent *Eucalyptus loxophleba* subsp. *supralaevis* over Thicket of *Acacia ramulosa* over herbland of Asteraceae in loam.
- HS1 Low Heath of *Ptilotus obovatus* with emergent shrubs of *Acacia stowardii* and *Calycopeplus paucifolius* over Herbs in loamy clay large amongst large boulders.

The survey found that *Darwinia masonii* was most abundant on the hill tops and upper slopes of the Mt Gibson Ranges. The most significant populations were recorded from the T3, T6 and HS1 vegetation communities occurring on the crest and east-facing slopes of Mt Gibson. In the majority of locations from where *Darwinia masonii* was recorded, the soil was extremely skeletal and limited to shallow pockets between exposed ironstone and BIF. It is likely that the fissures and soils between the BIF capture and retain sufficient water to enable the plants to survive during periods of low rainfall. This is consistent with previous observations by Muir (1995) and Armstrong and Associates (2004).

4.3 Threatening Processes

The restricted range and distribution of *Darwinia masonii* makes it susceptible to several threatening processes. The January 2003 wildfire that burnt through a significant portion of the southern area of the Mt Gibson Ranges (including all of Iron Hill East, the western slopes of Mt Gibson and the eastern slopes of Iron Hill) is likely to have had a significant short-term impact on the fire sensitive species through this area. Frequent fire represents the greatest threat to the long term survival of the species as it has potential to result in the local extinction of the species which in turn may lead to a reduction in species viability and loss of genetic diversity.

The current proposal for Mt Gibson Mining Ltd to mine the Extension Hill area will result in the loss of approximately 15% of the total number of plants recorded during ATA Environmental survey of the Mt Gibson Ranges.

Other less threatening pressures on *Darwinia masonii* include grazing by feral goats and rabbits. Control programmes may be implemented should populations increase, which will assist in reducing the impact that these species have on *Darwinia masonii*.

5. CONCLUSIONS

In the Mt Gibson Ranges, *Darwinia masonii* is restricted in its distribution to the upper slopes crests and ridges of the eleven major hills that comprised the 6km range. Research (Muir, 1995, Bennett, 2000 and Armstrong and Associates, 2004) suggests that the species is restricted in distribution to the Mt Gibson Ranges. There is anecdotal evidence (Muir, 1995) that *Darwinia masonii* may have been previously recorded from Mt Singleton, although no voucher specimens could be found at the Western Australian Herbarium and brief examinations of the site by Muir (1995) and Armstrong and Associates (2004) did not identify the species from this location.

More than 16,000 *Darwinia masonii* (mature plants and seedlings) from ten distinct populations were recorded during this current survey. This represents a considerable increase (~10,000 plants) in the total numbers recorded over the number of plants estimated by Armstrong and Associates (i.e. 6107 plants).

Mt Gibson Mining Ltd have funded the Kings Park and Botanic Gardens genetics laboratory to conduct preliminary investigations into the genetics of the Mt Gibson *Darwinia masonii* populations. This has involved the sampling plants from four of the subpopulations along the Mt Gibson range, using the multilocus the DNA fingerprinting technique Amplified Fragment Length Polymorphism (AFLP). The method is very efficient at detecting variation between individuals, and is one of the most sensitive techniques available for population genetic analysis.

The preliminary results from this initial investigation finds levels of AFLP variation within *D. masonii* to very low relative to species of the related genus *Chamelaucium*. This is consistent with the hypothesis that *D. masonii* may have been through a population “bottleneck” at some time in the recent past. Standard population genetic statistics suggest that the whole Mt Gibson area might be treated as a single provenance unit for *D. masonii*.

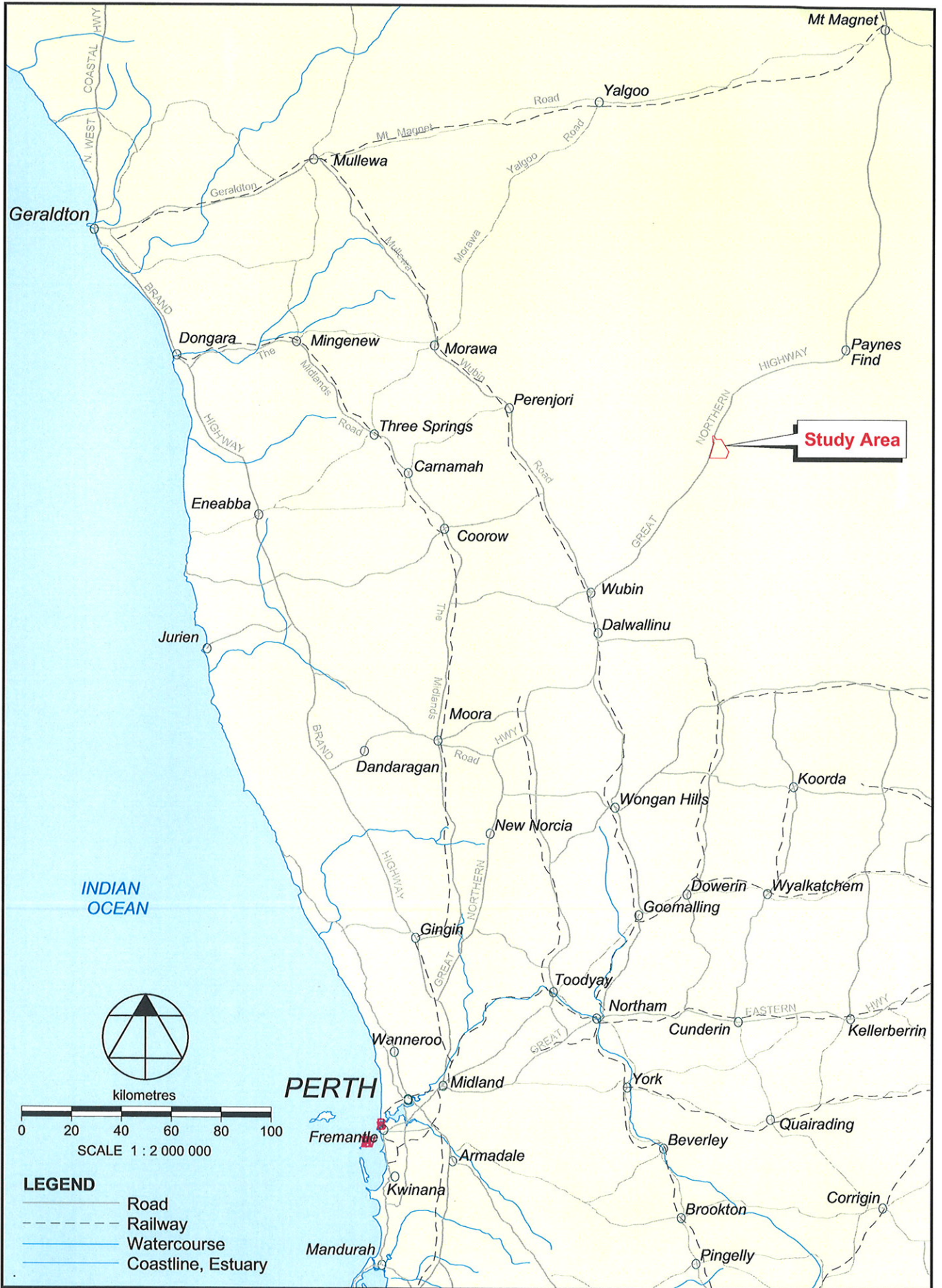
The next stage of the Kings Park and Botanic Gardens genetics laboratory research on *D. masonii* is aimed at ensuring long-term integrated conservation of *D. masonii*. The focus of the study will include:

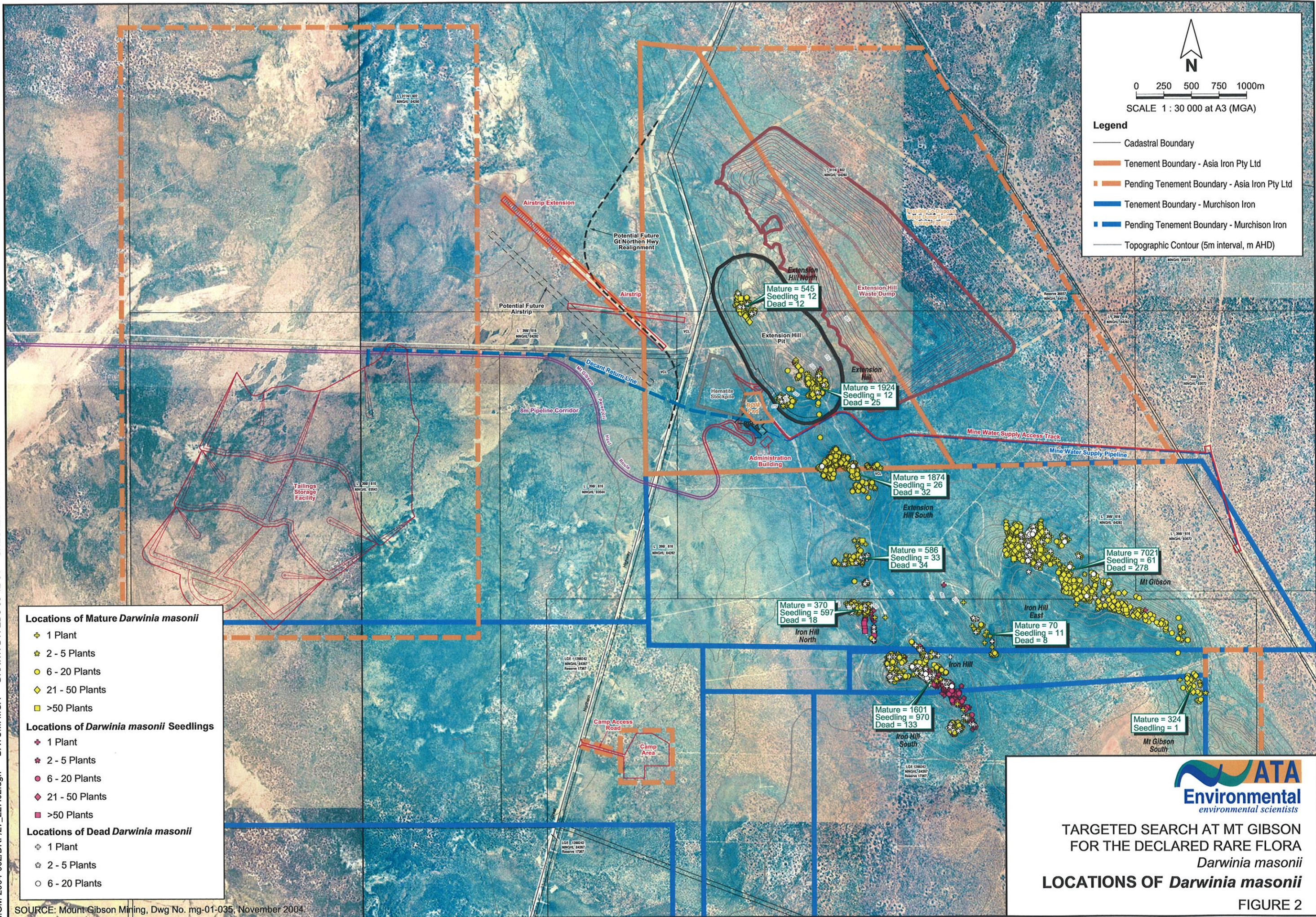
- reproductive biology and factors limiting reproductive success in situ;
- factors limiting the distribution of *D. masonii* (especially ecophysiology);
- seed and germplasm storage ex situ; and
- methods for successful translocation and re-establishment of *D. masonii*.

REFERENCES

- Armstrong & Associates (2004) *Vegetation Assessment and Rare Flora Search between Perenjori and Mt Gibson*. Unpublished report for Mount Gibson Iron Ltd. March 2004.
- Bennett Environmental Consulting (2000) *Flora and Vegetation of Mt Gibson*. Unpublished report prepared for Mount Gibson Iron Ltd. Dec 2000.
- Brown A, Thomas-Dans, C. and Marchant, N. (1998). *Western Australian Threatened Flora*. Department of Conservation and Land Management, Perth.
- Muir Environmental (1995) Observations on the Presence and Distribution of Rare flora, especially *Darwinia masonii*, near Mt Gibson. Unpublished report for Asia Iron Ltd

FIGURES





ATA Environmental
environmental scientists

TARGETED SEARCH AT MT GIBSON FOR THE DECLARED RARE FLORA *Darwinia masonii*

LOCATIONS OF *Darwinia masonii*

FIGURE 2

PLATES



Plate 1 Mature *Darwinia masonii* plant



Plate 2 *Darwinia masonii*



Plate 3 *Darwinia masonii* on Banded Iron Formation (BIF)



Plate 4 *Darwinia masonii* on upper slopes of Iron Hill



Plate 5 *Darwinia masonii* seedlings on crest of Extension Hill



Plate 6 *Darwinia masonii* on upper slopes of Extension Hill



Plate 7 *Darwinia masonii* on upper slopes of Extension Hill South



Plate 8 *Darwinia masonii* on BIF on Iron Hill North



Plate 9 *Darwinia masonii* seedling on crest of Extension Hill



Plate 10 *Darwinia masonii* on BIF near crest of Iron Hill North



Plate 11 Burnt Thicket of *Allocasuarina acutivalvis* subsp. *prinsepiana* on western slopes of Mt Gibson



Plate 12 *Darwinia masonii* on BIF on upper slopes of Mt Gibson

APPENDIX 1
LOCATION OF *DARWINIA MASONII* AND
NUMBER OF PLANTS RECORDED (I.E. MATURE
PLANTS, SENESCENT PLANTS AND SEEDLINGS)

Location of *Darwinia masonii* and number of plants recorded (i.e. mature plants, senescent plants and seedlings)

GPS Co-ordinates (MGA 1994; Zone 50)	Number of Mature Plants	Number of Senescent Plants	Number of Seedlings	Number of Mature Plants and Seedlings	Total number of Plants (mature plants, seedlings and senescent plants)
517026, 6725348	1			1	1
517018, 6725343	2			2	2
517014, 6725344	14			14	14
517014, 6725338	2			2	2
517191, 6725337		1	1	1	2
516986, 6725337		1	12	12	13
516977, 6725339		1	2	2	3
516779, 6725336			1	1	1
516775, 6725336			3	3	3
516761, 6725345	1			1	1
516754, 6725340	1			1	1
516744, 6725337	2			2	2
516741, 6725340	1			1	1
516938, 6725339	1			1	1
516722, 6725338	1			1	1
516714, 6725338	2			2	2
516683, 6725341	1	1		1	2
516678, 6725336	3			3	3
516671, 6725336	1			1	1
516668, 6725340	2			2	2
516667, 6725335	3			3	3
516666, 6725339	2			2	2
516663, 6725336	1			1	1
516659, 6725340	8	1	5	13	14
516657, 6725341	1			1	1
516658, 6725344			7	7	7
516655, 6725344	1			1	1
516653, 6725339	1			1	1
516640, 6725339	9	1	1	10	11
516637, 6725338	1			1	1
516633, 6725335	1			1	1
516637, 6725337	1			1	1
516630, 6725339	1			1	1
516629, 6725338	2			2	2
516630, 6725341	1			1	1
516628, 6725338	1			1	1
516621, 6725335	1			1	1
516617, 6725336	1			1	1
516500, 6725484			10	10	10
516498, 6725492		1	20	20	21
516497, 6725517			15	15	15
516504, 6725531			12	12	12
516501, 6725539			53	53	53
516502, 6725551			51	51	51
516500, 6725565			40	40	40
516501, 6725572		4	30	30	34
516497, 6725585			72	72	72
516500, 6725608		2	8	8	10
516500, 6725663			1	1	1
516497, 6725760			1	1	1

Location of *Darwinia masonii* and number of plants recorded (i.e. mature plants, senescent plants and seedlings)

GPS Co-ordinates (MGA 1994; Zone 50)	Number of Mature Plants	Number of Senescent Plants	Number of Seedlings	Number of Mature Plants and Seedlings	Total number of Plants (mature plants, seedlings and senescent plants)
516413, 6726011	2			2	2
516416, 6726009	3			3	3
516424, 6726005	4			4	4
516420, 6725998	1			1	1
516428, 6725998	1			1	1
516414, 6725803	5			5	5
516421, 6725801	5			5	5
516427, 6725798	2			2	2
516422, 6725780	1			1	1
516415, 6725775	2			2	2
516423, 6725770	7			7	7
516418, 6725745	2			2	2
516419, 6725736	4			4	4
516422, 6725692			10	10	10
516420, 6725682			30	30	30
516418, 6725667			40	40	40
516412, 6725644			60	60	60
516416, 6725598			55	55	55
516418, 6725574			75	75	75
516506, 6725694	1			1	1
516508, 6725698	1			1	1
516932, 6725387	1			1	1
517027, 6725359	1			1	1
517082, 6725350		1			1
517062, 6725350	1			1	1
517025, 6725350	1			1	1
517016, 6725350	1			1	1
516976, 6725350		2	1	1	3
516961, 6725350	1			1	1
516955, 6725350	5			5	5
516936, 6725350	2			2	2
516710, 6725350	3			3	3
516687, 6725350	5			5	5
516676, 6725350	14		1	15	15
516664, 6725350	18		3	21	21
516654, 6725350	17		1	18	18
516636, 6725350	7			7	7
516490, 6725683			1	1	1
516420, 6726018	1			1	1
516420, 6726010	2			2	2
516420, 6725999	14	2		14	16
516420, 6725812	2			2	2
516420, 6725807	1			1	1
516420, 6725801	4	1		4	5
516420, 6725796	2			2	2
516420, 6725790	2			2	2
516420, 6725770	1			1	1
516420, 6725755	4			4	4
516420, 6725733	5			5	5
516420, 6725721	4			4	4

Location of *Darwinia masonii* and number of plants recorded (i.e. mature plants, senescent plants and seedlings)

GPS Co-ordinates (MGA 1994; Zone 50)	Number of Mature Plants	Number of Senescent Plants	Number of Seedlings	Number of Mature Plants and Seedlings	Total number of Plants (mature plants, seedlings and senescent plants)
516603, 6725697	1			1	1
517018, 6725380	1			1	1
517025, 6725380	1			1	1
516685, 6725200	3			3	3
516685, 6725196	5			5	5
516685, 6725178	1			1	1
516685, 6725174	5			5	5
516685, 6725157	5			5	5
516685, 6725152	1			1	1
516685, 6725116	7			7	7
516685, 6725142	3			3	3
516685, 6725130	9			9	9
516685, 6725139	12		1	13	13
516685, 6725134	1			1	1
516705, 6725145	12			12	12
516705, 6725151	2			2	2
516705, 6725153	1			1	1
516705, 6725157	3			3	3
516705, 6725155	1			1	1
516705, 6725168	2			2	2
516705, 6725174	2			2	2
516705, 6725230	1			1	1
516705, 6725200	2			2	2
516705, 6725520					
516745, 6725192	2			2	2
516745, 6725190	1			1	1
516745, 6725182	1			1	1
516745, 6725176			2	2	2
516745, 6725168	7			7	7
516745, 6725155	1			1	1
516785, 6725156	3			3	3
516785, 6725159	5			5	5
516785, 6725161	4			4	4
516785, 6725164	10			10	10
516815, 6725167	5			5	5
516862, 6725180	1			1	1
516858, 6725180	5			5	5
516888, 6725180	1			1	1
516909, 6725183			31	31	31
516914, 6725168	1			1	1
516922, 6725170		1			1
516925, 6725170	1	1		1	2
516930, 6725166	2			2	2
516929, 6725161	1			1	1
516932, 6725161	1	1		1	2
516945, 6725151		1			1
516959, 6725144		1			1
516972, 6725142					
516978, 6725145	1	6		1	7
516981, 6725126					

Location of *Darwinia masonii* and number of plants recorded (i.e. mature plants, senescent plants and seedlings)

GPS Co-ordinates (MGA 1994; Zone 50)	Number of Mature Plants	Number of Senescent Plants	Number of Seedlings	Number of Mature Plants and Seedlings	Total number of Plants (mature plants, seedlings and senescent plants)
516983, 6725123	1		3	4	4
516974, 6725125			1	1	1
516985, 6725118	1			1	1
516992, 6725121		1	5	5	6
517000, 6725101	6			6	6
517000, 6725085		1			1
517071, 6725077			4	4	4
517059, 6725086			4	4	4
516956, 6725231	1			1	1
516961, 6725238	1			1	1
516965, 6725248	1			1	1
516970, 6725252	1			1	1
516957, 6725251	1			1	1
516960, 6725254	2			2	2
516960, 6725266			2	2	2
516962, 6725273	4			4	4
516968, 6725273	2			2	2
516944, 6725274	1			1	1
516934, 6725270	3			3	3
516935, 6725266	1			1	1
516926, 6725267	3			3	3
516918, 6725240	1	2		1	3
517359, 6724764			4	4	4
517254, 6724697	3			3	3
517257, 6724694	3			3	3
517260, 6724703	2			2	2
517258, 6724699	1			1	1
517264, 6724705	3			3	3
517258, 6724707	8			8	8
517268, 6724715	10			10	10
517269, 6724707	3			3	3
517268, 6724703	5			5	5
517278, 6724700	1			1	1
517279, 6724705	3			3	3
517271, 6724720	4			4	4
517280, 6724705	1			1	1
517394, 6724720			7	7	7
517407, 6724711			1	1	1
517385, 6724770			1	1	1
517383, 6724764			3	3	3
517380, 6724764			1	1	1
517375, 6724775			1	1	1
517348, 6724783	7	1	1	8	9
517339, 6724774	5			5	5
517331, 6724766	1			1	1
517337, 6724782	18			18	18
517329, 6724761	1			1	1
517314, 6724760	1			1	1
517234, 6724635	1			1	1
517227, 6724634	2			2	2

Location of *Darwinia masonii* and number of plants recorded (i.e. mature plants, senescent plants and seedlings)

GPS Co-ordinates (MGA 1994; Zone 50)	Number of Mature Plants	Number of Senescent Plants	Number of Seedlings	Number of Mature Plants and Seedlings	Total number of Plants (mature plants, seedlings and senescent plants)
517227, 6724651	12			12	12
517224, 6724667	2			2	2
517220, 6724677	8			8	8
517216, 6724680	4			4	4
517234, 6724670	3			3	3
517228, 6724678	1			1	1
517206, 6724710	27			27	27
517203, 6724694	64			64	64
517250, 6724711	1			1	1
517251, 6724726	5		2	7	7
517257, 6724745	4			4	4
517312, 6724867			15	15	15
517314, 6724881			5	5	5
517357, 6724878			5	5	5
517328, 6724860			27	27	27
517325, 6724877			1	1	1
517282, 6724910			5	5	5
517276, 6724915			2	2	2
517274, 6724911			1	1	1
517267, 6724911			9	9	9
517254, 6724910	1			1	1
517256, 6724901			3	3	3
517212, 6724920			3	3	3
517203, 6724955			1	1	1
517227, 6724958			1	1	1
517312, 6724962			3	3	3
517263, 6724989			4	4	4
517253, 6724985			1	1	1
517239, 6725000			6	6	6
517230, 6724998			1	1	1
517208, 6725001			4	4	4
517189, 6724993			4	4	4
517181, 6724989			1	1	1
517180, 6725002			13	13	13
517135, 6724990			1	1	1
517129, 6725048			1	1	1
517131, 6725042			4	4	4
517143, 6725054			5	5	5
517187, 6725048			3	3	3
517195, 6725050			7	7	7
517197, 6725057			6	6	6
517200, 6725050			2	2	2
517209, 6725091			1	1	1
517203, 6725084			6	6	6
517194, 6725088			1	1	1
517085, 6725089			1	1	1
517081, 6725085			4	4	4
517073, 6725079			4	4	4
517059, 6725084			4	4	4
517053, 6725089			2	2	2

Location of *Darwinia masonii* and number of plants recorded (i.e. mature plants, senescent plants and seedlings)

GPS Co-ordinates (MGA 1994; Zone 50)	Number of Mature Plants	Number of Senescent Plants	Number of Seedlings	Number of Mature Plants and Seedlings	Total number of Plants (mature plants, seedlings and senescent plants)
517047, 6725097			7	7	7
517039, 6725089			12	12	12
517047, 6725083			8	8	8
517038, 6725130			2	2	2
517047, 6725133	1			1	1
517065, 6725141			7	7	7
517080, 6725127			1	1	1
517125, 6725109			4	4	4
517103, 6725136	3			3	3
517095, 6725132			1	1	1
517086, 6725127			1	1	1
517087, 6725181			1	1	1
516994, 6725216			1	1	1
517039, 6725224	1			1	1
517034, 6725231	1			1	1
517083, 6725213	3			3	3
517088, 6725220	1			1	1
517093, 6725220	2			2	2
517101, 6725221	4			4	4
517099, 6725227	1			1	1
517107, 6725222	11			11	11
517112, 6725220	15			15	15
517116, 6725213	4			4	4
517120, 6725208	1			1	1
517120, 6725202	2			2	2
517127, 6725198	5			5	5
517128, 6725208	3			3	3
517126, 6725212	1			1	1
517140, 6725200	2			2	2
517144, 6725199	5			5	5
517152, 6725200	3			3	3
517152, 6725191	1			1	1
517152, 6725205	1			1	1
517094, 6725240	2			2	2
517091, 6725234	2			2	2
517097, 6725231	1			1	1
517088, 6725245	5			5	5
517084, 6725258	5			5	5
517074, 6725260	1			1	1
517066, 6725243	7			7	7
517075, 6725234	7			7	7
517066, 6725236	1			1	1
517045, 6725266	6			6	6
516973, 6725308	7			7	7
516977, 6725334			6	6	6
516985, 6725335			6	6	6
516977, 6725340			1	1	1
516961, 6725348	5			5	5
516949, 6725357	1			1	1
516942, 6725367	3			3	3

Location of *Darwinia masonii* and number of plants recorded (i.e. mature plants, senescent plants and seedlings)

GPS Co-ordinates (MGA 1994; Zone 50)	Number of Mature Plants	Number of Senescent Plants	Number of Seedlings	Number of Mature Plants and Seedlings	Total number of Plants (mature plants, seedlings and senescent plants)
516953, 6725372	4			4	4
516933, 6725382	1			1	1
516932, 6725404	1	1	1	2	3
516922, 6725407			10	10	10
516915, 6725403	10	1		10	11
516916, 6725426			4	4	4
516908, 6725430			1	1	1
516877, 6725444	9	1		9	10
516864, 6725454	5			5	5
516859, 6725457	1			1	1
516855, 6725460	2			2	2
516842, 6725477	8			8	8
516878, 6725294	1			1	1
516879, 6725289	4			4	4
516892, 6725284	1			1	1
516901, 6725281	2			2	2
516912, 6725280	1			1	1
516914, 6725289	9			9	9
516908, 6725286	2			2	2
516924, 6725282	1			1	1
516924, 6725278	4			4	4
516929, 6725278	2			2	2
516933, 6725270	7			7	7
516945, 6725273	1			1	1
516961, 6725275	5			5	5
516955, 6725286	7			7	7
516957, 6725293	4			4	4
516957, 6725294	2			2	2
516658, 6725238	6			6	6
516655, 6725245	2			2	2
516653, 6725250	3			3	3
516656, 6725259	3			3	3
516653, 6725252	3			3	3
516665, 6725262	2			2	2
516663, 6725260	5		1	6	6
516660, 6725279	4			4	4
516656, 6725285	4			4	4
516655, 6725290	4			4	4
516658, 6725294	7			7	7
516663, 6725288	9			9	9
516664, 6725303	7			7	7
516659, 6725307	1			1	1
516657, 6725317	6		5	11	11
516659, 6725314	2			2	2
516662, 6725314	3			3	3
516662, 6725332	4		1	5	5
516665, 6725330	9			9	9
516683, 6725330	5			5	5
516671, 6725325	2			2	2
516677, 6725315	6			6	6

Location of *Darwinia masonii* and number of plants recorded (i.e. mature plants, senescent plants and seedlings)

GPS Co-ordinates (MGA 1994; Zone 50)	Number of Mature Plants	Number of Senescent Plants	Number of Seedlings	Number of Mature Plants and Seedlings	Total number of Plants (mature plants, seedlings and senescent plants)
516667, 6725313	4			4	4
516671, 6725309	1			1	1
516665, 6725305	2			2	2
516670, 6725295	17		1	18	18
516677, 6725282	1			1	1
516689, 6725281	2			2	2
516751, 6725285	19			19	19
516734, 6725309	3			3	3
516739, 6725323	1			1	1
516731, 6725333	6			6	6
516764, 6725304	2			2	2
516768, 6725298	6			6	6
516775, 6725303	4			4	4
516779, 6725301	1			1	1
515270, 6728583	1			1	1
515275, 6728584	2			2	2
515280, 6728584	6			6	6
515306, 6728594	80			80	80
515349, 6728597	1			1	1
515356, 6728598	1			1	1
515359, 6728604	6			6	6
515364, 6728598	1			1	1
515368, 6728597	5			5	5
515313, 6728542	1			1	1
515285, 6728494	6			6	6
515292, 6728498	67			67	67
515309, 6728507	3			3	3
515305, 6728514	7			7	7
515304, 6728511	2			2	2
515317, 6728512	5			5	5
515318, 6728510	1			1	1
515324, 6728510	2			2	2
515434, 6728491	3			3	3
515396, 6728448	5			5	5
515392, 6728446	1			1	1
515347, 6728433	26			26	26
515337, 6728444	2			2	2
515330, 6728448	1			1	1
515372, 6728399	10			10	10
515816, 6727866	2			2	2
515814, 6727875	1			1	1
515829, 6727889	11			11	11
515737, 6727769	15			15	15
515726, 6727694	1			1	1
515731, 6727684	1			1	1
515740, 6727690	3			3	3
515750, 6727645	2			2	2
515747, 6727652	1			1	1
515753, 6727667	1			1	1
515766, 6727768	2			2	2

Location of *Darwinia masonii* and number of plants recorded (i.e. mature plants, senescent plants and seedlings)

GPS Co-ordinates (MGA 1994; Zone 50)	Number of Mature Plants	Number of Senescent Plants	Number of Seedlings	Number of Mature Plants and Seedlings	Total number of Plants (mature plants, seedlings and senescent plants)
515763, 6727660	9			9	9
515771, 6727660	19			19	19
515760, 6727639	1			1	1
515785, 6727657	1			1	1
515781, 6727659	3			3	3
515786, 6727664	2			2	2
515790, 6727667	2			2	2
515738, 6727642	5			5	5
515654, 6727701	1			1	1
515678, 6727681	1			1	1
515671, 6727657	167	5		167	172
515698, 6727658	107			107	107
515721, 6727644	1			1	1
515728, 6727632	1			1	1
515728, 6727938	12			12	12
515743, 6727630	1			1	1
515737, 6727629	1			1	1
515760, 6727615	14			14	14
516010, 6727702	38			38	38
515967, 6727694	9			9	9
515962, 6727695	13			13	13
515755, 6727690	4			4	4
515958, 6727695	11			11	11
515948, 6727699	7			7	7
515939, 6727704	5			5	5
515937, 6727717	1			1	1
515931, 6727727	1			1	1
515915, 6727719	2			2	2
515912, 6727709	3			3	3
515917, 6727910	1			1	1
515924, 6727704	2			2	2
515933, 6727701	1			1	1
515953, 6727715	12			12	12
515953, 6727722	26			26	26
515941, 6727723	1			1	1
516022, 6727778	1			1	1
516010, 6727778	9			9	9
515996, 6727768	63			63	63
515996, 6727778	1			1	1
515986, 6727786	1			1	1
515989, 6727776	7			7	7
515988, 6727772	2			2	2
515988, 6727769	11			11	11
515981, 6727779	5			5	5
515973, 6727779	23			23	23
515973, 6727775	2			2	2
515970, 6727763	2			2	2
515978, 6727762	5			5	5
515978, 6727754	16			16	16
515965, 6727752	5			5	5

Location of *Darwinia masonii* and number of plants recorded (i.e. mature plants, senescent plants and seedlings)

GPS Co-ordinates (MGA 1994; Zone 50)	Number of Mature Plants	Number of Senescent Plants	Number of Seedlings	Number of Mature Plants and Seedlings	Total number of Plants (mature plants, seedlings and senescent plants)
515959, 6727760	1			1	1
515959, 6727764	8			8	8
515960, 6727769	2			2	2
515954, 6727769	8			8	8
515956, 6727781	13			13	13
515943, 6727770	2			2	2
515951, 6727782	20			20	20
515923, 6727812	5			5	5
515918, 6727822	39			39	39
515935, 6727824	28			28	28
515944, 6727812	9			9	9
515950, 6727824	30			30	30
515962, 6727818	1			1	1
515972, 6727795	1			1	1
515974, 6727803	1			1	1
515968, 6727836	2			2	2
515960, 6727842	2			2	2
515957, 6727849	7			7	7
515951, 6727831	13			13	13
515939, 6727827	5			5	5
515926, 6727832	18			18	18
515917, 6727831	12			12	12
515916, 6727835	2			2	2
515912, 6727841	1			1	1
515901, 6727838	1			1	1
515903, 6727845	2			2	2
515838, 6727893	9			9	9
515912, 6727863	20			20	20
515916, 6727879	11			11	11
515920, 6727860	4			4	4
515925, 6727862	3			3	3
515938, 6727867	8			8	8
516001, 6727878	1			1	1
515998, 6727892	3			3	3
516020, 6727868	2			2	2
516017, 6727860	8			8	8
516020, 6727875	2			2	2
516029, 6727873	1			1	1
516066, 6727845	19			19	19
516071, 6727833	15			15	15
516015, 6727923	2			2	2
516019, 6727913	1			1	1
516017, 6727903	10			10	10
516009, 6727919	2			2	2
516010, 6727903	3			3	3
516002, 6727902	1			1	1
515900, 6727906	4			4	4
515826, 6727893	3			3	3
515829, 6727899	2			2	2
515824, 6727975	36		2	38	38

Location of *Darwinia masonii* and number of plants recorded (i.e. mature plants, senescent plants and seedlings)

GPS Co-ordinates (MGA 1994; Zone 50)	Number of Mature Plants	Number of Senescent Plants	Number of Seedlings	Number of Mature Plants and Seedlings	Total number of Plants (mature plants, seedlings and senescent plants)
515852, 6727939	13		1	14	14
515849, 6727950	1			1	1
515810, 6727987	3			3	3
516000, 6727628	11			11	11
516005, 6727644	17			17	17
516013, 6727539	20			20	20
516021, 6727330	8			8	8
516239, 6727154	5			5	5
516234, 6727157	2			2	2
516223, 6727154	5			5	5
516220, 6727150	1			1	1
516193, 6727163	1			1	1
516187, 6727157	5			5	5
516180, 6727152	4			4	4
516182, 6727158	10			10	10
516177, 6727154	1			1	1
516164, 6727163	11			11	11
516153, 6727152	2			2	2
516143, 6727157	10			10	10
516134, 6727161	6			6	6
516122, 6727151	2			2	2
516114, 6727149	15			15	15
516111, 6727152	6			6	6
516154, 6727171	1			1	1
516163, 6727174	1			1	1
516167, 6727173	2			2	2
516180, 6727180	2			2	2
516192, 6727185	9			9	9
516171, 6727179	8			8	8
516159, 6727186	1			1	1
516157, 6727198	1			1	1
516139, 6727195	4			4	4
516137, 6727185	1			1	1
516128, 6727198	1			1	1
516123, 6727189	1			1	1
516157, 6727235	1			1	1
516167, 6727230	2			2	2
516270, 6727155	10		1	11	11
516270, 6727145	29		16	45	45
516251, 6727126	4			4	4
516254, 6727117	1			1	1
516264, 6727104	4			4	4
516234, 6727111	1			1	1
516230, 6727128	11			11	11
516224, 6727126	2			2	2
516207, 6727134	3			3	3
516195, 6727138	1			1	1
516178, 6727137	3			3	3
516178, 6727112	2			2	2
516181, 6727127	6			6	6

Location of *Darwinia masonii* and number of plants recorded (i.e. mature plants, senescent plants and seedlings)

GPS Co-ordinates (MGA 1994; Zone 50)	Number of Mature Plants	Number of Senescent Plants	Number of Seedlings	Number of Mature Plants and Seedlings	Total number of Plants (mature plants, seedlings and senescent plants)
516189, 6727128	5			5	5
516189, 6727120	2			2	2
516192, 6727115	1			1	1
516200, 6727110	8			8	8
516196, 6727107	1			1	1
516192, 6727111	1			1	1
516164, 6727139	3			3	3
516163, 6727146	1			1	1
516160, 6727131	8			8	8
516160, 6727125	1			1	1
516163, 6727120	1			1	1
516167, 6727115	3			3	3
516161, 6727118	6			6	6
516155, 6727127	9			9	9
516150, 6727139	5			5	5
516145, 6727144	1			1	1
516132, 6727144	6			6	6
516148, 6727118	1			1	1
516148, 6727121	7			7	7
516127, 6727129	2			2	2
516093, 6727141	1			1	1
516089, 6727126	4			4	4
516082, 6727116	10			10	10
516070, 6727106	7			7	7
516063, 6727122	7			7	7
516060, 6727103	39			39	39
516066, 6727091	11			11	11
516076, 6727093	3			3	3
516078, 6727099	3			3	3
516105, 6727104	1			1	1
516113, 6727103	2			2	2
516137, 6727098	2			2	2
516139, 6727102	1			1	1
516148, 6727101	1			1	1
516200, 6727103	23			23	23
516210, 6727102	38			38	38
516205, 6727118	3			3	3
516229, 6727115	2			2	2
516239, 6727111	2			2	2
516250, 6727096	6			6	6
516322, 6727030	18		1	19	19
516309, 6727025	70			70	70
516309, 6727041	7			7	7
516287, 6727038	27			27	27
516256, 6727049	2			2	2
516246, 6727055	1			1	1
516336, 6726992	12			12	12
516328, 6727005	3			3	3
516337, 6727004	2			2	2
516331, 6727023	2			2	2

Location of *Darwinia masonii* and number of plants recorded (i.e. mature plants, senescent plants and seedlings)

GPS Co-ordinates (MGA 1994; Zone 50)	Number of Mature Plants	Number of Senescent Plants	Number of Seedlings	Number of Mature Plants and Seedlings	Total number of Plants (mature plants, seedlings and senescent plants)
516339, 6727022	5			5	5
516352, 6727027	8			8	8
516359, 6727034	6			6	6
516341, 6727010	6			6	6
516354, 6726995	17			17	17
516365, 6726982	6			6	6
516324, 6727038	1			1	1
516360; 6726964	10			10	10
516354; 6726958	4			4	4
516343; 6726970	1			1	1
516326; 6726962	10			10	10
516401; 6726928	9			9	9
516411; 6726926	1			1	1
516421; 6726917	1			1	1
516434; 6726913	6			6	6
516454; 6726917	2			2	2
516464; 6726926	4			4	4
516469; 6726918	2			2	2
516475; 6726920	1			1	1
516491; 6726921	6			6	6
516505; 6726904					
516518; 6726866	2			2	2
516514; 6726874	2			2	2
516500; 6726893	1			1	1
516477; 6726877	4			4	4
516476; 6726893	1			1	1
516326; 6726024	9			9	9
516371; 6726887	23			23	23
516345; 6726871	4			4	4
516345; 6726899	16		1	17	17
516337; 6726884	1			1	1
516339; 6726872	1			1	1
516311; 6726848	7			7	7
516311; 6726840	8			8	8
516142; 6726999	11			11	11
516130; 6726992	3			3	3
516125; 6726980	9			9	9
516132; 6726965	11			11	11
516300; 6726974	1			1	1
516309; 6726979	10		1	11	11
516345; 6726979	1			1	1
516337; 6726901	1			1	1
516355; 6726897	1			1	1
516413; 6726902	1			1	1
516436, 6726838	4			4	4
516420; 6726843	3			3	3
516408; 6726854	9			9	9
516364; 6726846	13			13	13
516355; 6726856	3			3	3
516389; 6726871	1			1	1

Location of *Darwinia masonii* and number of plants recorded (i.e. mature plants, senescent plants and seedlings)

GPS Co-ordinates (MGA 1994; Zone 50)	Number of Mature Plants	Number of Senescent Plants	Number of Seedlings	Number of Mature Plants and Seedlings	Total number of Plants (mature plants, seedlings and senescent plants)
516455; 6726784	6			6	6
516139; 6726199	10			10	10
516145; 6726190	2			2	2
516144; 6726185	2			2	2
516180; 6726181	4			4	4
516234; 6726181	58	2		58	60
516245; 6726177	18			18	18
516279; 6726189	7			7	7
516299; 6726199	9			9	9
516307; 6726194	8			8	8
516311; 6726194	14			14	14
516299; 6726224	14			14	14
516241; 6726214	2			2	2
516149; 6726210	39			39	39
516189; 6725226	3			3	3
516235; 6725234	1			1	1
516267; 6725233	14			14	14
516297; 6725243	10			10	10
516334; 6725243	9			9	9
516349; 6725233	3			3	3
516357; 6725230	2			2	2
516364; 6725207	4			4	4
516365; 6726257	54			54	54
516340; 6726262	11			11	11
516319; 6726248	15			15	15
516283; 6726254	2			2	2
516248; 6726260	5			5	5
516428; 6726362	1			1	1
516371; 6726313	7			7	7
516384; 6726303	12			12	12
516354; 6726269	2			2	2
516348; 6726263	1			1	1
516327; 6726394	5			5	5
516353; 6726346	3			3	3
516394; 6726381	21			21	21
516399; 6726394	73			73	73
516370; 6726397	1			1	1
516397; 6726256	4			4	4
516384; 6726247	6			6	6
516366; 6726213	8			8	8
516373; 6726210	2			2	2
516388; 6726230	50			50	50
516395; 6726179	1			1	1
516339; 6726192	1			1	1
516440; 6725725	1			1	1
516406; 6725737	1			1	1
516374; 6725745	1			1	1
516363; 6725737	1			1	1
516353; 6725733	1			1	1
516343; 6725761	1			1	1

Location of *Darwinia masonii* and number of plants recorded (i.e. mature plants, senescent plants and seedlings)

GPS Co-ordinates (MGA 1994; Zone 50)	Number of Mature Plants	Number of Senescent Plants	Number of Seedlings	Number of Mature Plants and Seedlings	Total number of Plants (mature plants, seedlings and senescent plants)
516341; 6725765	1			1	1
516353; 6725781	20			20	20
516373; 6725763	17			17	17
516377; 6725798	18		1	19	19
516340; 6725804	17			17	17
516344; 6725795	1			1	1
516350; 6725789	2			2	2
516403; 6725774	3			3	3
516405; 6725817	1			1	1
516366; 6725823	1			1	1
516323; 6725835	6			6	6
516308; 6725843	2			2	2
516303; 6725835	2			2	2
516295; 6725822	5			5	5
516304; 6725833	3			3	3
516267; 6725796	1			1	1
516290; 6725786	5			5	5
516317; 6725801	8	1		8	9
516326; 6725798	5			5	5
516336; 6725780	1			1	1
516404; 6725808	2			2	2
516447; 6725794	1			1	1
516459; 6725808	1			1	1
515276; 6728648	3			3	3
515295; 6728606	6			6	6
515307; 6728610	1			1	1
517207; 6724677	6	1	1	7	8
517189; 6724667	28			28	28
517211; 6724634			1	1	1
517585, 6725381	6			6	6
517586, 6725371	2			2	2
517596, 6725373	13			13	13
517605, 6725361	7			7	7
517577, 6725350	2			2	2
517563, 6725363	3			3	3
517570, 6725427	1			1	1
517570, 6725480	1	1	2	3	4
517550, 6725528	1			1	1
517520, 6725566	1			1	1
517487, 6725622	2			2	2
517471, 6725632	9			9	9
517469, 6725617	3			3	3
517402, 6725689	1	4		1	5
517312, 6725833	1			1	1
517064, 6725358	1			1	1
517060, 6725362	1			1	1
517055, 6725361	1			1	1
517040, 6725363		1			1
516948, 6725372	1			1	1
516949, 6725377	1			1	1

Location of *Darwinia masonii* and number of plants recorded (i.e. mature plants, senescent plants and seedlings)

GPS Co-ordinates (MGA 1994; Zone 50)	Number of Mature Plants	Number of Senescent Plants	Number of Seedlings	Number of Mature Plants and Seedlings	Total number of Plants (mature plants, seedlings and senescent plants)
516946, 6725374	1			1	1
516942, 6725357	1			1	1
516936, 6725366	1			1	1
516937, 6725368	2			2	2
516935, 6725371	1			1	1
516715, 6725365	1			1	1
516712, 6725365	1			1	1
516718, 6725362	1			1	1
516719, 6725358			1	1	1
516719, 6725356			1	1	1
516719, 6725355	1			1	1
516723, 6725356	1			1	1
516711, 6725362			1	1	1
516675, 6725365	1			1	1
516666, 6725367	1		1	2	2
516659, 6725359			8	8	8
516655, 6725365	6		3	9	9
516651, 6725363	1			1	1
516650, 6725362	2			2	2
516643, 6725361	2			2	2
516477, 6725502	1			1	1
516478, 6725508	10			10	10
516487, 6725696			1	1	1
516472, 6725733			3	3	3
516476, 6725810	1			1	1
516477, 6725804		1			1
516425, 6726021	1			1	1
516429, 6726019	3			3	3
516434, 6726023	2			2	2
516438, 6726024		1			1
516438, 6726014	6			6	6
516438, 6726010	3			3	3
516437, 6726006	2			2	2
516443, 6726002			2	2	2
516450, 6725818	3			3	3
516440, 6725813	1			1	1
516442, 6725781	3			3	3
516434, 6725781	1			1	1
516446, 6725776	1			1	1
516450, 6725768	3			3	3
516442, 6725765	3			3	3
516440, 6725756	7			7	7
516451, 6725749	1			1	1
516443, 6725728	1			1	1
516438, 6725722	1			1	1
516909, 6725406	5			5	5
516908, 6725413	5			5	5
516912, 6725412	1			1	1
516904, 6725414	1			1	1
516924, 6725410			14	14	14

Location of *Darwinia masonii* and number of plants recorded (i.e. mature plants, senescent plants and seedlings)

GPS Co-ordinates (MGA 1994; Zone 50)	Number of Mature Plants	Number of Senescent Plants	Number of Seedlings	Number of Mature Plants and Seedlings	Total number of Plants (mature plants, seedlings and senescent plants)
516927, 6725408			1	1	1
516932, 6725407	1			1	1
516935, 6725416			1	1	1
516920, 6725435			1	1	1
516913, 6725429			1	1	1
516912, 6725432			6	6	6
516906, 6725432			1	1	1
516686, 6725176	1			1	1
516680, 6725183	1			1	1
516680, 6725180	2	1		2	3
516674, 6725180	1			1	1
516671, 6725186	2	1		2	3
516667, 6725184	7			7	7
516663, 6725171	4			4	4
516662, 6725166	13	1		13	14
516662, 6725167	2			2	2
516659, 6725169	2			2	2
516670, 6725161	2			2	2
516671, 6725154	3			3	3
516667, 6725158	1			1	1
516656, 6725157	10			10	10
516653, 6725164	1			1	1
516663, 6725152	1			1	1
516658, 6725149	12			12	12
516663, 6725145	1			1	1
516667, 6725150	3			3	3
516672, 6725160	3			3	3
516662, 6725166		1			1
516678, 6725155			2	2	2
516671, 6725147	2			2	2
516668, 6725142	1			1	1
516655, 6725138	1			1	1
516659, 6725136	2			2	2
516654, 6725134	2			2	2
516651, 6725130	5			5	5
516658, 6725128	1			1	1
516654, 6725125		1			1
516648, 6725125	1			1	1
516638, 6725129	1			1	1
516638, 6725134	1			1	1
516646, 6725136	1			1	1
516638, 6725153	1			1	1
516631, 6725153	1			1	1
516646, 6725172		1			1
516649, 6725174	1			1	1
516656, 6725176	1			1	1
516650, 6725178	1			1	1
516643, 6725176	1			1	1
516641, 6725172	1			1	1
516635, 6725160		1			1

Location of *Darwinia masonii* and number of plants recorded (i.e. mature plants, senescent plants and seedlings)

GPS Co-ordinates (MGA 1994; Zone 50)	Number of Mature Plants	Number of Senescent Plants	Number of Seedlings	Number of Mature Plants and Seedlings	Total number of Plants (mature plants, seedlings and senescent plants)
516646, 6725168		1			1
516658, 6725184	2			2	2
516647, 6725187	2			2	2
516725, 6725200	1			1	1
516733, 6725194	4		1	5	5
516724, 6725167	1			1	1
516720, 6725166	3			3	3
516725, 6725165	3			3	3
516725, 6725164	5	1		5	6
516732, 6725159	6	1		6	7
516731, 6725166	6			6	6
516733, 6725162	2			2	2
516734, 6725156	6			6	6
516727, 6725152	1			1	1
516724, 6725152	2			2	2
516727, 6725138			1	1	1
516775, 6725151	1			1	1
516773, 6725155	2			2	2
516772, 6725161	1			1	1
516772, 6725171			4	4	4
516773, 6725180					
516770, 6725213	1			1	1
516807, 6725165	6			6	6
516805, 6725162	1			1	1
516805, 6725150	2			2	2
516884, 6725192	1		1	2	2
516885, 6725194		3			3
516885, 6725201	1		1	2	2
516891, 6725203	1		1	2	2
516928, 6725200	6		1	7	7
516930, 6725203	5		1	6	6
516933, 6725206	1		1	2	2
516933, 6725197	1		1	2	2
516933, 6725193	4		1	5	5
516936, 6725194	5		1	6	6
516936, 6725193		3			3
516933, 6725194	5		1	6	6
516934, 6725192	4		1	5	5
516936, 6725193	3		1	4	4
516938, 6725190	2		1	3	3
516940, 6725189	2	1		2	3
516938, 6725194	1		1	2	2
516944, 6725186	1		1	2	2
516942, 6725188	1		1	2	2
516944, 6725187	1		1	2	2
516946, 6725186	4		1	5	5
516951, 6725184	2		1	3	3
516946, 6725183	1		1	2	2
516947, 6725181	1		1	2	2
516946, 6725180	2		1	3	3

Location of *Darwinia masonii* and number of plants recorded (i.e. mature plants, senescent plants and seedlings)

GPS Co-ordinates (MGA 1994; Zone 50)	Number of Mature Plants	Number of Senescent Plants	Number of Seedlings	Number of Mature Plants and Seedlings	Total number of Plants (mature plants, seedlings and senescent plants)
516950, 6725175			1	1	1
516955, 6725188			1	1	1
516961, 6725190			8	8	8
516959, 6725192			1	1	1
516965, 6725195			1	1	1
516967, 6725190			1	1	1
516963, 6725183			5	5	5
516965, 6725184			1	1	1
516961, 6725184			1	1	1
516962, 6725184			2	2	2
516955, 6725183			1	1	1
516957, 6725181			1	1	1
516967, 6725183		9			9
516965, 6725179	2		1	3	3
516962, 6725174	1	1		1	2
516990, 6725158			2	2	2
516999, 6725160			1	1	1
516998, 6725161			1	1	1
517003, 6725154		5			5
517006, 6725166		5			5
517011, 6725151	1			1	1
517012, 6725147			2	2	2
517018, 6725144			1	1	1
517019, 6725151			1	1	1
517020, 6725151			3	3	3
517022, 6725150			1	1	1
517024, 6725150			5	5	5
517025, 6725151			8	8	8
517028, 6725152		2			2
517032, 6725153			1	1	1
517035, 6725154			1	1	1
517035, 6725155			1	1	1
517033, 6725156			1	1	1
517031, 6725158			12	12	12
517028, 6725160			1	1	1
517028, 6725161			1	1	1
517077, 6725161			1	1	1
517023, 6725167			1	1	1
517023, 6725168			3	3	3
517031, 6725172			1	1	1
517029, 6725173			2	2	2
517031, 6725172			5	5	5
517033, 6725177	1	1	4	5	6
517039, 6725172	11	4		11	15
517035, 6725170		1			1
517041, 6725172	2			2	2
517039, 6725168			4	4	4
517037, 6725160			4	4	4
517407, 6724720		1	10	10	11
517400, 6724728			20	20	20

Location of *Darwinia masonii* and number of plants recorded (i.e. mature plants, senescent plants and seedlings)

GPS Co-ordinates (MGA 1994; Zone 50)	Number of Mature Plants	Number of Senescent Plants	Number of Seedlings	Number of Mature Plants and Seedlings	Total number of Plants (mature plants, seedlings and senescent plants)
517394, 6724726			1	1	1
517395, 6724726		2	5	5	7
517374, 6724739			1	1	1
517370, 6724735			1	1	1
517371, 6724726		1			1
517288, 6724695	4			4	4
517281, 6724700	1			1	1
517276, 6724692	7			7	7
517279, 6724685	10			10	10
517273, 6724686	7			7	7
517268, 6724694	2			2	2
517272, 6724685			1	1	1
517258, 6724687	5			5	5
517258, 6724692	5			5	5
517250, 6724691	1			1	1
517297, 6724688	1			1	1
517299, 6724701			2	2	2
517400, 6724702			2	2	2
517390, 6724680			1	1	1
517416, 6724699			2	2	2
517279, 6724675	2			2	2
517276, 6724679		1			1
517265, 6724674	1			1	1
517262, 6724676	2			2	2
517264, 6724682	2			2	2
517261, 6724666	2	2		2	4
517246, 6724670	1			1	1
517239, 6724673	1			1	1
517235, 6724658	4			4	4
517313, 6724796		1			1
517312, 6724799			1	1	1
517333, 6724793	1			1	1
517336, 6724787	2			2	2
517336, 6724797	1			1	1
517336, 6724782	29	1	1	30	31
517349, 6724781	1			1	1
517383, 6724811			6	6	6
517360, 6724797			1	1	1
517352, 6724801	1		1	2	2
517304, 6724859	1			1	1
517358, 6724877			3	3	3
517341, 6724881			8	8	8
517324, 6724880			1	1	1
517290, 6724883			1	1	1
517205, 6724943			6	6	6
517212, 6724924			2	2	2
517253, 6724927			1	1	1
517255, 6724928			11	11	11
517261, 6724935			1	1	1
517257, 6724938			2	2	2

Location of *Darwinia masonii* and number of plants recorded (i.e. mature plants, senescent plants and seedlings)

GPS Co-ordinates (MGA 1994; Zone 50)	Number of Mature Plants	Number of Senescent Plants	Number of Seedlings	Number of Mature Plants and Seedlings	Total number of Plants (mature plants, seedlings and senescent plants)
517288, 6724934			7	7	7
517296, 6724934			10	10	10
517136, 6725991			1	1	1
517167, 6725011			2	2	2
517171, 6725008			1	1	1
517116, 6725008			1	1	1
517176, 6725005			2	2	2
517179, 6725022			3	3	3
517169, 6725007			1	1	1
517181, 6725007			11	11	11
517184, 6725012			2	2	2
517191, 6725014			2	2	2
517196, 6725023			3	3	3
517209, 6725019			4	4	4
517209, 6725007			6	6	6
517188, 6725003			1	1	1
517236, 6725008			3	3	3
517245, 6725008			1	1	1
517266, 6725006			7	7	7
517269, 6725005			20	20	20
517269, 6725022			2	2	2
517257, 6725028			2	2	2
517246, 6725028			1	1	1
517221, 6725031			1	1	1
517209, 6725035			2	2	2
517203, 6725032			15	15	15
517208, 6725028			8	8	8
517195, 6725036			2	2	2
517191, 6725039			9	9	9
517191, 6725042			1	1	1
517187, 6725039			4	4	4
517184, 6725038			1	1	1
517184, 6725037			2	2	2
517181, 6725037			2	2	2
517173, 6725032			4	4	4
517168, 6725033			1	1	1
517148, 6725033			1	1	1
517138, 6725040			3	3	3
517135, 6725037			1	1	1
517135, 6725033			2	2	2
517128, 6725043			1	1	1
517136, 6725044			2	2	2
517068, 6725066			2	2	2
517122, 6725079			2	2	2
517150, 6725079		1			1
517154, 6725071			1	1	1
517159, 6725070	1	1		1	2
517162, 6725068			6	6	6
517166, 6725072			1	1	1
517167, 6725071			4	4	4

Location of *Darwinia masonii* and number of plants recorded (i.e. mature plants, senescent plants and seedlings)

GPS Co-ordinates (MGA 1994; Zone 50)	Number of Mature Plants	Number of Senescent Plants	Number of Seedlings	Number of Mature Plants and Seedlings	Total number of Plants (mature plants, seedlings and senescent plants)
517166, 6725082			1	1	1
517172, 6725075			1	1	1
517201, 6725071			10	10	10
517208, 6725069			17	17	17
517204, 6725074			6	6	6
517204, 6725071		8			8
517291, 6725072			5	5	5
517179, 6725112	1	1	13	14	15
517171, 6725109	1	1		1	2
517155, 6725114			2	2	2
517152, 6725104		1	3	3	4
517152, 6725111			1	1	1
517132, 6725115			6	6	6
517130, 6725117			6	6	6
517131, 6725110		1	1	1	2
517121, 6725110			15	15	15
517115, 6725113			1	1	1
517065, 6725118	4		10	14	14
517028, 6725124			2	2	2
517151, 6725191	1			1	1
517151, 6725199	6			6	6
517147, 6725191	3			3	3
517135, 6725189	3			3	3
517031, 6725190	1			1	1
517039, 6725186		2	10	10	12
517024, 6725177		1	20	20	21
517008, 6725178			20	20	20
516955, 6725231	1			1	1
516969, 6725231		3	6	6	9
516973, 6725220			6	6	6
517082, 6725237	4			4	4
516854, 6725235	9	2		9	11
516862, 6725246	8	2		8	10
516858, 6725250	1			1	1
516862, 6725252	1			1	1
516871, 6725256	2			2	2
516876, 6725252	5			5	5
516873, 6725255	3			3	3
516880, 6725255	2			2	2
516879, 6725259	3			3	3
516897, 6725257	7	2	1	8	10
516887, 6725257	1			1	1
516896, 6725262	3			3	3
516885, 6725255	1			1	1
516866, 6725259	1			1	1
516859, 6725267	3			3	3
516846, 6725251		7			7
516844, 6725241	3			3	3
516844, 6725237	1			1	1
516842, 6725231	1			1	1

Location of *Darwinia masonii* and number of plants recorded (i.e. mature plants, senescent plants and seedlings)

GPS Co-ordinates (MGA 1994; Zone 50)	Number of Mature Plants	Number of Senescent Plants	Number of Seedlings	Number of Mature Plants and Seedlings	Total number of Plants (mature plants, seedlings and senescent plants)
516839, 6725238	1			1	1
516839, 6725259	1			1	1
516654, 6725236	2			2	2
516633, 6725242	1	1		1	2
516654, 6725204	5			5	5
516649, 6725243	2			2	2
516643, 6725238	4			4	4
516643, 6725245	2			2	2
516645, 6725246	2			2	2
516651, 6725200	1			1	1
516653, 6725262	2			2	2
516655, 6725266	1			1	1
516645, 6725260	2			2	2
516642, 6725258			1	1	1
516643, 6725255	1			1	1
516654, 6725273	1			1	1
516654, 6725277	2			2	2
516650, 6725275	1			1	1
516647, 6725280	3			3	3
516647, 6725283	3			3	3
516641, 6725274	1			1	1
516641, 6725280	2			2	2
516638, 6725281	1			1	1
516628, 6725284	4			4	4
516638, 6725287	2			2	2
516633, 6725285	1			1	1
516643, 6725295	4			4	4
516649, 6725292	2			2	2
516650, 6725293	1			1	1
516650, 6725304	2			2	2
516651, 6725309	3			3	3
516647, 6725319	1			1	1
516643, 6725323	7			7	7
516643, 6725328	4			4	4
516642, 6725315	6			6	6
516639, 6725313	3			3	3
516634, 6725306	1			1	1
516633, 6725302	1			1	1
516641, 6725297	5			5	5
516629, 6725299	1		3	4	4
516626, 6725302	1			1	1
516626, 6725299	2			2	2
516622, 6725299	2			2	2
516618, 6725293	1			1	1
516622, 6725293	3		2	5	5
516625, 6725293	3			3	3
516625, 6725289	1			1	1
516625, 6725284	4			4	4
516610, 6725282	2			2	2
516617, 6725276	2		1	3	3

Location of *Darwinia masonii* and number of plants recorded (i.e. mature plants, senescent plants and seedlings)

GPS Co-ordinates (MGA 1994; Zone 50)	Number of Mature Plants	Number of Senescent Plants	Number of Seedlings	Number of Mature Plants and Seedlings	Total number of Plants (mature plants, seedlings and senescent plants)
516620, 6725280	3			3	3
516621, 6725278	6			6	6
516624, 6725275	1			1	1
516625, 6725272	2			2	2
516631, 6725271	1			1	1
516627, 6725240	2			2	2
515378, 6728569	1			1	1
515378, 6728560	2			2	2
515336, 6728556	2			2	2
515313, 6728552	3			3	3
515271, 6728543	4			4	4
515268, 6728561	3			3	3
515254, 6728531	2			2	2
515259, 6728531			1	1	1
515292, 6728528	2			2	2
515293, 6728528	1			1	1
515297, 6728530	1			1	1
515296, 6728523	1			1	1
515316, 6728538	2			2	2
515320, 6728541	3			3	3
515365, 6728546	2			2	2
515367, 6728544		1			1
515371, 6728545	1			1	1
515373, 6728542	2			2	2
515379, 6728537	3			3	3
515383, 6728540	1			1	1
515393, 6728546	1			1	1
515329, 6728519	1			1	1
515328, 6728515	3	1		3	4
515313, 6728521	7			7	7
515308, 6728517	1			1	1
515297, 6728516	16	2		16	18
515287, 6728519	1			1	1
515287, 6728481	1			1	1
515300, 6728467	3			3	3
515300, 6728464	3			3	3
515306, 6728463	1			1	1
515309, 6728463	1			1	1
515314, 6728481	1			1	1
515310, 6728484	3			3	3
515312, 6728491	9			9	9
515317, 6728502	2			2	2
515324, 6728497	7			7	7
515330, 6728487	3			3	3
515336, 6728483	2			2	2
515341, 6728474	2			2	2
515342, 6728470	1			1	1
515345, 6728494	1			1	1
515398, 6728485	4			4	4
515431, 6728474	1			1	1

Location of *Darwinia masonii* and number of plants recorded (i.e. mature plants, senescent plants and seedlings)

GPS Co-ordinates (MGA 1994; Zone 50)	Number of Mature Plants	Number of Senescent Plants	Number of Seedlings	Number of Mature Plants and Seedlings	Total number of Plants (mature plants, seedlings and senescent plants)
515424, 6728478	1			1	1
515420, 6728489	1			1	1
515427, 6728464	11	2		11	13
515406, 6728456	23	2	2	25	27
515404, 6728454	15	2		15	17
515402, 6728450	3			3	3
515399, 6728445	2			2	2
515398, 6728450	3			3	3
515400, 6728454	2			2	2
515399, 6728463	16		5	21	21
515394, 6728467			4	4	4
515345, 6728467	2			2	2
515341, 6728455	2			2	2
515344, 6728450	5			5	5
515353, 6728450	1			1	1
515349, 6728446	10			10	10
515338, 6728446	3			3	3
515336, 6728462	7			7	7
515330, 6728463	3			3	3
515328, 6728454	1			1	1
515316, 6728452	5			5	5
515309, 6728458	3			3	3
515305, 6728459	6			6	6
515347, 6728420					
515349, 6728418					
515358, 6728419					
515361, 6728424					
515363, 6728411					
515370, 6728413					
515386, 6728381	24			24	24
515718, 6727707	4	1		4	5
515705, 6727696	1			1	1
515698, 6727684	2			2	2
515704, 6727690	1			1	1
515704, 6727649	2			2	2
515698, 6727653	2			2	2
515700, 6727665		2			2
515652, 6727661	10			10	10
515656, 6727669	5			5	5
515660, 6727671	20			20	20
515667, 6727669	5			5	5
515669, 6727670	8			8	8
515671, 6727665	6			6	6
515665, 6727666	4			4	4
515655, 6727661	1			1	1
515653, 6727671	5			5	5
515660, 6727672	4			4	4
515657, 6727676	1			1	1
515655, 6727678	1			1	1
515653, 6727676	3			3	3

Location of *Darwinia masonii* and number of plants recorded (i.e. mature plants, senescent plants and seedlings)

GPS Co-ordinates (MGA 1994; Zone 50)	Number of Mature Plants	Number of Senescent Plants	Number of Seedlings	Number of Mature Plants and Seedlings	Total number of Plants (mature plants, seedlings and senescent plants)
515660, 6727714	2			2	2
515663, 6727703	1			1	1
515656, 6727698	18	5		18	23
515655, 6727690	4			4	4
515631, 6727690	1			1	1
515651, 6727686	10			10	10
515649, 6727680	2			2	2
515651, 6727680	1			1	1
515648, 6727672	1			1	1
515700, 6727671	2			2	2
515700, 6727661		2			2
515702, 6727652	1			1	1
515697, 6727649	1			1	1
515690, 6727652	1			1	1
515694, 6727641	1			1	1
515692, 6727638	1			1	1
515698, 6727637	1			1	1
515704, 6727636	1			1	1
515692, 6727636	1			1	1
515689, 6727633	1			1	1
515693, 6727629	2			2	2
515705, 6727623	3			3	3
515704, 6727618	3			3	3
515690, 6727613	1			1	1
515685, 6727618	5			5	5
515688, 6727615	1			1	1
515681, 6727618	1			1	1
516046, 6727734	2			2	2
516044, 6727731	1			1	1
516044, 6727730	1			1	1
516045, 6727735	2			2	2
516042, 6727740	2			2	2
516040, 6727736	6			6	6
516037, 6727732	4			4	4
516027, 6727731	1			1	1
516030, 6727732	1			1	1
516037, 6727736	1			1	1
516033, 6727743	2			2	2
516011, 6727724	4			4	4
516007, 6727725	5			5	5
516007, 6727719	1			1	1
516007, 6727714	8			8	8
516005, 6727720	2			2	2
516007, 6727718	2			2	2
516005, 6727721	4			4	4
516007, 6727723	1			1	1
516004, 6727724	3			3	3
516003, 6727727	3			3	3
516000, 6727726	9			9	9
515999, 6727725	1			1	1

Location of *Darwinia masonii* and number of plants recorded (i.e. mature plants, senescent plants and seedlings)

GPS Co-ordinates (MGA 1994; Zone 50)	Number of Mature Plants	Number of Senescent Plants	Number of Seedlings	Number of Mature Plants and Seedlings	Total number of Plants (mature plants, seedlings and senescent plants)
516001, 6727724	3			3	3
515997, 6727727	3			3	3
516001, 6727723	4			4	4
516003, 6727716	1			1	1
516005, 6727712	2			2	2
515993, 6727727	3			3	3
515991, 6727724	1			1	1
515993, 6727729	3			3	3
515979, 6727726	1			1	1
515963, 6727707	1			1	1
515968, 6727704	3			3	3
515962, 6727725	1			1	1
515966, 6727731	2			2	2
515959, 6727737	2			2	2
515962, 6727744	3			3	3
515960, 6727750	2			2	2
515964, 6727750	4			4	4
515963, 6727747	2			2	2
515964, 6727742	7			7	7
515964, 6727743	2			2	2
515966, 6727742	3			3	3
515966, 6727741	4			4	4
515967, 6727744	2			2	2
515967, 6727745	3			3	3
515966, 6727748	2			2	2
515972, 6727744	2			2	2
515970, 6727735	1			1	1
515980, 6727748	2			2	2
515984, 6727749	2			2	2
515983, 6727742	7			7	7
515986, 6727739	1			1	1
515982, 6727731	4			4	4
515991, 6727733	2			2	2
515988, 6727734	1			1	1
515992, 6727736	1			1	1
515988, 6727739	4			4	4
515991, 6727742	1			1	1
515991, 6727748	3			3	3
515990, 6727750	4			4	4
515992, 6727749	7			7	7
515992, 6727743	8			8	8
515999, 6727731	4			4	4
515997, 6727736	25			25	25
516003, 6727736	11			11	11
515997, 6727739	16	5		16	21
515997, 6727742	8			8	8
515996, 6727744	17			17	17
515999, 6727745	6			6	6
515995, 6727752	12			12	12
515990, 6727750	3			3	3

Location of *Darwinia masonii* and number of plants recorded (i.e. mature plants, senescent plants and seedlings)

GPS Co-ordinates (MGA 1994; Zone 50)	Number of Mature Plants	Number of Senescent Plants	Number of Seedlings	Number of Mature Plants and Seedlings	Total number of Plants (mature plants, seedlings and senescent plants)
515996, 6727744	6			6	6
515997, 6727741	4			4	4
516001, 6727739	6			6	6
516004, 6727737	4			4	4
516005, 6727736	9			9	9
516004, 6727728	9			9	9
516005, 6727734	1			1	1
516007, 6727737	4			4	4
516004, 6727739	6			6	6
516003, 6727742	3			3	3
516000, 6727748	1			1	1
515997, 6727753	4		1	5	5
516004, 6727747	10			10	10
516008, 6727739	1			1	1
516008, 6727733	1	1		1	2
516028, 6727750	1			1	1
516046, 6727729	1			1	1
516080, 6727777	11			11	11
516072, 6727776	12			12	12
516076, 6727810	21			21	21
516076, 6727816	1			1	1
516072, 6727824	1			1	1
516073, 6727818	2			2	2
516065, 6727811	3			3	3
516068, 6727771	11			11	11
516066, 6727780	1			1	1
516062, 6727784	1			1	1
516065, 6727804	3			3	3
516054, 6727814			1	1	1
516058, 6727794	3			3	3
516054, 6727805	4	3		4	7
516049, 6727805	1			1	1
516052, 6727795	1			1	1
516043, 6727811	2			2	2
516045, 6727808	2			2	2
516045, 6727802	3			3	3
516054, 6727785	1			1	1
516040, 6727805	1			1	1
516036, 6727814	1			1	1
516036, 6727822	4			4	4
516037, 6727829	1			1	1
516036, 6727831	8			8	8
516045, 6727812	1			1	1
516025, 6727823	1			1	1
516021, 6727817	3			3	3
516021, 6727814	3			3	3
516024, 6727800	2			2	2
516027, 6727795	2			2	2
516025, 6727789	2			2	2
516027, 6727795	1			1	1

Location of *Darwinia masonii* and number of plants recorded (i.e. mature plants, senescent plants and seedlings)

GPS Co-ordinates (MGA 1994; Zone 50)	Number of Mature Plants	Number of Senescent Plants	Number of Seedlings	Number of Mature Plants and Seedlings	Total number of Plants (mature plants, seedlings and senescent plants)
516023, 6727801	1			1	1
516024, 6727805	1			1	1
516024, 6727807	2			2	2
516019, 6727821	1			1	1
516016, 6727821	5			5	5
516017, 6727808	5			5	5
516017, 6727802	1			1	1
515979, 6727791	1			1	1
515958, 6727814	1			1	1
515947, 6727823	2			2	2
515963, 6727791	1			1	1
515938, 6727813	4			4	4
515933, 6727814	6			6	6
515931, 6727822	1			1	1
515927, 6727812	1			1	1
515912, 6727809	1			1	1
515908, 6727813	2			2	2
515901, 6727861	2			2	2
515914, 6727844	7			7	7
515917, 6727840	2			2	2
515920, 6727847	1			1	1
515917, 6727850	2			2	2
515913, 6727853	2			2	2
515910, 6727855	3			3	3
515913, 6727857	1			1	1
515916, 6727850	1			1	1
515921, 6727842	1			1	1
515922, 6727851	4			4	4
515927, 6727847	15			15	15
515926, 6727838	5			5	5
515930, 6727852	1			1	1
515935, 6727853	14			14	14
515931, 6727846	2			2	2
515937, 6727842	1			1	1
515934, 6727855	11			11	11
515959, 6727850	1			1	1
515962, 6727848	3			3	3
516025, 6727845	4			4	4
516024, 6727840	2			2	2
516031, 6727839	8			8	8
516031, 6727844	8			8	8
516024, 6727864	4			4	4
516061, 6727853	1			1	1
516012, 6727896	1			1	1
516008, 6727890		1			1
515904, 6727891	1			1	1
515835, 6727873	2			2	2
515851, 6727936	1			1	1
515851, 6727941	2			2	2
516024, 6727948			1	1	1

Location of *Darwinia masonii* and number of plants recorded (i.e. mature plants, senescent plants and seedlings)

GPS Co-ordinates (MGA 1994; Zone 50)	Number of Mature Plants	Number of Senescent Plants	Number of Seedlings	Number of Mature Plants and Seedlings	Total number of Plants (mature plants, seedlings and senescent plants)
516852, 6727975		1			1
515789, 6728010			3	3	3
515791, 6728015			3	3	3
515803, 6728018	1			1	1
515803, 6728035	1			1	1
516240, 6727164	1			1	1
516182, 6727170	2			2	2
516173, 6727174	5			5	5
516169, 6727164	1			1	1
516165, 6727166	1			1	1
516165, 6727170	1			1	1
516158, 6727177	1			1	1
516159, 6727183	1			1	1
516154, 6727180	2			2	2
516150, 6727173	4			4	4
516154, 6727184	1			1	1
516134, 6727216	1			1	1
516138, 6727212	1			1	1
516141, 6727209	3			3	3
516141, 6727201	1			1	1
516144, 6727213	1		1	2	2
516159, 6727220	2			2	2
516161, 6727217	2			2	2
516166, 6727213	1			1	1
516162, 6727218	1			1	1
516165, 6727218	1			1	1
516163, 6727222	6			6	6
516162, 6727222	3			3	3
516177, 6727206	3			3	3
516159, 6727236	1			1	1
516232, 6727150	2			2	2
516231, 6727154	2			2	2
516229, 6727153	3			3	3
516219, 6727153	1			1	1
516167, 6727150	1			1	1
516163, 6727150	2			2	2
516151, 6727144	4			4	4
516157, 6727146	2			2	2
516124, 6727145	1			1	1
516104, 6727147	1			1	1
516098, 6727152	2			2	2
516096, 6727155	1			1	1
516104, 6727156	3			3	3
516105, 6727152	1			1	1
516097, 6727152	1			1	1
516101, 6727135	2			2	2
516101, 6727123	3			3	3
516100, 6727103	6			6	6
516100, 6727101	3			3	3
516098, 6727104	1			1	1

Location of *Darwinia masonii* and number of plants recorded (i.e. mature plants, senescent plants and seedlings)

GPS Co-ordinates (MGA 1994; Zone 50)	Number of Mature Plants	Number of Senescent Plants	Number of Seedlings	Number of Mature Plants and Seedlings	Total number of Plants (mature plants, seedlings and senescent plants)
516096, 6727101	1			1	1
516092, 6727100	1			1	1
516089, 6727101	2			2	2
516088, 6727099	2			2	2
516084, 6727100	1			1	1
516088, 6727096	1			1	1
516096, 6727093	2			2	2
516098, 6727098	1			1	1
516108, 6727083	2			2	2
516102, 6727080	2			2	2
516098, 6727081	1			1	1
516096, 6727079	2			2	2
516092, 6727081	1			1	1
516089, 6727083	1			1	1
516088, 6727085	2			2	2
516069, 6727084	1			1	1
516142, 6727072	1			1	1
516142, 6727088	1			1	1
516158, 6727085	3			3	3
516157, 6727079	3			3	3
516157, 6727084	1			1	1
516162, 6727077	1			1	1
516163, 6727076	2			2	2
516163, 6727077	1			1	1
516162, 6727079	1			1	1
516166, 6727076	6		2	8	8
516167, 6727080	1			1	1
516167, 6727077	2			2	2
516171, 6727071	1			1	1
516175, 6727078	3			3	3
516170, 6727081	3			3	3
516166, 6727087	1			1	1
516167, 6727087	6			6	6
516168, 6727089	1			1	1
516167, 6727090	1			1	1
516167, 6727090	3			3	3
516166, 6727094	3			3	3
516163, 6727094	3			3	3
516166, 6727082	1			1	1
516172, 6727084	1			1	1
516172, 6727080	1			1	1
516178, 6727078	1			1	1
516175, 6727094	1			1	1
516172, 6727082	1			1	1
516202, 6727090	1			1	1
516204, 6727084	1			1	1
516204, 6727094	3			3	3
516204, 6727090	9			9	9
516207, 6727092	1			1	1
516212, 6727091	1			1	1

Location of *Darwinia masonii* and number of plants recorded (i.e. mature plants, senescent plants and seedlings)

GPS Co-ordinates (MGA 1994; Zone 50)	Number of Mature Plants	Number of Senescent Plants	Number of Seedlings	Number of Mature Plants and Seedlings	Total number of Plants (mature plants, seedlings and senescent plants)
516216, 6727090	1			1	1
516216, 6727088	1			1	1
516220, 6727088	1			1	1
516223, 6727093	1			1	1
516227, 6727094	2			2	2
516225, 6727091	1			1	1
516225, 6727093	2			2	2
516232, 6727093	1			1	1
516253, 6727088	1			1	1
516253, 6727083	1			1	1
516258, 6727076	3			3	3
516262, 6727096	5			5	5
516265, 6727094	3			3	3
516269, 6727068	1			1	1
516276, 6727091	1			1	1
516276, 6727088	1			1	1
516280, 6727072	1			1	1
516277, 6727072	1			1	1
516274, 6727068	2			2	2
516278, 6727070	1			1	1
516282, 6727072	1			1	1
516285, 6727073	1			1	1
516303, 6727064	1			1	1
516305, 6727093	1			1	1
516311, 6727079	1			1	1
516309, 6727075	1			1	1
516311, 6727070	2			2	2
516314, 6727087	1			1	1
516311, 6727094	4			4	4
516314, 6727098	1			1	1
516317, 6727097	1			1	1
516318, 6727083	3			3	3
516319, 6727082	1			1	1
516323, 6727081	4			4	4
516326, 6727079	3			3	3
516327, 6727081	3			3	3
516338, 6727086	1			1	1
516334, 6727096	3			3	3
516339, 6727098	1			1	1
516444, 6727078	3			3	3
516448, 6727083	1			1	1
516444, 6727073	1			1	1
516453, 6727073	1			1	1
516457, 6727071	1			1	1
516501, 6727067	1			1	1
516502, 6727062	1			1	1
516510, 6727062	5			5	5
516512, 6727061	4			4	4
516512, 6727056	3			3	3
516526, 6727050	1			1	1

Location of *Darwinia masonii* and number of plants recorded (i.e. mature plants, senescent plants and seedlings)

GPS Co-ordinates (MGA 1994; Zone 50)	Number of Mature Plants	Number of Senescent Plants	Number of Seedlings	Number of Mature Plants and Seedlings	Total number of Plants (mature plants, seedlings and senescent plants)
516553, 6727056	1			1	1
516563, 6727058	2			2	2
516567, 6727050	5			5	5
516532, 6727083	1			1	1
516538, 6727081	7			7	7
516531, 6727088	3			3	3
516504, 6727069	1			1	1
516458, 6727069	1			1	1
516456, 6727062	5			5	5
516446, 6727061	1			1	1
516446, 6727067	1			1	1
516342, 6727047	2			2	2
516342, 6727055	1			1	1
516318, 6727069	40	10		40	50
516303, 6727048	1			1	1
516297, 6727051	1			1	1
516293, 6727063	1			1	1
516291, 6727067	1			1	1
516290, 6727070	1			1	1
516286, 6727069	7			7	7
516285, 6727067	1			1	1
516284, 6727063	1			1	1
516284, 6727063	1			1	1
516290, 6727056			1	1	1
516286, 6727055	3			3	3
516269, 6727059	2			2	2
516233, 6727061	1			1	1
516145, 6727064	6			6	6
516137, 6727064	1			1	1
516135, 6727059	1			1	1
516142, 6727061	1			1	1
516142, 6727060	1			1	1
516145, 6727050	1			1	1
516134, 6727063	1			1	1
516121, 6727051	1			1	1
516106, 6727057	1			1	1
516108, 6727052	3			3	3
516114, 6727047	4			4	4
516109, 6727046	1			1	1
516110, 6727044	1			1	1
516105, 6727045	1			1	1
516098, 6727044	2			2	2
516096, 6727046	1			1	1
516067, 6727048	4			4	4
516064, 6727050	1			1	1
516053, 6727063	1			1	1
516052, 6727068	5			5	5
516056, 6727070	3			3	3
516052, 6727071	7			7	7
516049, 6727074	5			5	5

Location of *Darwinia masonii* and number of plants recorded (i.e. mature plants, senescent plants and seedlings)

GPS Co-ordinates (MGA 1994; Zone 50)	Number of Mature Plants	Number of Senescent Plants	Number of Seedlings	Number of Mature Plants and Seedlings	Total number of Plants (mature plants, seedlings and senescent plants)
516043, 6727070	2			2	2
516040, 6727075	9			9	9
516032, 6727077	8			8	8
516030, 6727071	3			3	3
516031, 6727067	12	5		12	17
516034, 6727068	18			18	18
516037, 6727070	16	1		16	17
516036, 6727071	16			16	16
516041, 6727071	4			4	4
516037, 6727068	9	7		9	16
516040, 6727065	4			4	4
516044, 6727067	3			3	3
516037, 6727060	3			3	3
516035, 6727058	1			1	1
516032, 6727061	2	6		2	8
516034, 6727056	2			2	2
516035, 6727057	1	3		1	4
516037, 6727058	2			2	2
516033, 6727052	2			2	2
516030, 6727053	1			1	1
516027, 6727053	5			5	5
516028, 6727052	1			1	1
516026, 6727052	7			7	7
516027, 6727049	2			2	2
516027, 6727045	2			2	2
516023, 6727046	6			6	6
516020, 6727045	6			6	6
516018, 6727049	11			11	11
516016, 6727054	2			2	2
516010, 6727056	1			1	1
516011, 6727061	7			7	7
516003, 6727058	2			2	2
516006, 6727060	1			1	1
515999, 6727058	5			5	5
516004, 6727050	1			1	1
516000, 6727051	1			1	1
516020, 6727033	1			1	1
516028, 6727043	12			12	12
516032, 6727046	9			9	9
516030, 6727041	3			3	3
516037, 6727039	1			1	1
516039, 6727040	3			3	3
516040, 6727037	1			1	1
516043, 6727031	6			6	6
516047, 6727031	1			1	1
516045, 6727028	2			2	2
516048, 6727050	1			1	1
516051, 6727030	2			2	2
516056, 6727032	2			2	2
516064, 6727043	1			1	1

Location of *Darwinia masonii* and number of plants recorded (i.e. mature plants, senescent plants and seedlings)

GPS Co-ordinates (MGA 1994; Zone 50)	Number of Mature Plants	Number of Senescent Plants	Number of Seedlings	Number of Mature Plants and Seedlings	Total number of Plants (mature plants, seedlings and senescent plants)
516068, 6727041	1			1	1
516077, 6727026	1			1	1
516074, 6727026	2			2	2
516073, 6727016	7			7	7
516080, 6727023	4			4	4
516082, 6727016	4			4	4
516084, 6727017	3			3	3
516084, 6727019	3			3	3
516088, 6727016	1			1	1
516090, 6727020	1			1	1
516092, 6727020	1			1	1
516101, 6727035	4			4	4
516108, 6727029	2			2	2
516110, 6727031	9			9	9
516110, 6727039	8			8	8
516114, 6727039	15			15	15
516298, 6727024	2			2	2
516142, 6727026	5			5	5
516142, 6727024	4			4	4
516139, 6727024	9			9	9
516135, 6727027	4			4	4
516133, 6727029	5			5	5
516139, 6727033	4			4	4
516135, 6727033	9			9	9
516133, 6727033	1			1	1
516134, 6727031	3			3	3
516133, 6727029	1			1	1
516130, 6727027	4			4	4
516130, 6727026	1			1	1
516125, 6727027	5			5	5
516118, 6727031	2			2	2
516113, 6727033	2			2	2
516115, 6727022	5			5	5
516121, 6727021	9		2	11	11
516125, 6727022	3			3	3
516130, 6727023	1			1	1
516134, 6727018	1			1	1
516137, 6727020	3			3	3
516109, 6727017	4			4	4
516110, 6727022	1			1	1
516114, 6727021	5			5	5
516115, 6727026	1			1	1
516104, 6727016	1			1	1
516106, 6727013	2			2	2
516108, 6727011	1			1	1
516102, 6727010	2			2	2
516098, 6727015	2			2	2
516096, 6727017	1			1	1
516092, 6727015	1			1	1
516094, 6727011	1			1	1

Location of *Darwinia masonii* and number of plants recorded (i.e. mature plants, senescent plants and seedlings)

GPS Co-ordinates (MGA 1994; Zone 50)	Number of Mature Plants	Number of Senescent Plants	Number of Seedlings	Number of Mature Plants and Seedlings	Total number of Plants (mature plants, seedlings and senescent plants)
516092, 6727008	1			1	1
516098, 6727005	1			1	1
516101, 6727006	1			1	1
516101, 6727001	2			2	2
516106, 6727001	2			2	2
516101, 6726999	1			1	1
516090, 6727002	2			2	2
516094, 6727002	3			3	3
516089, 6727011	1			1	1
516086, 6727015	1			1	1
516085, 6727015	7			7	7
516082, 6727011	3			3	3
516080, 6727010	1			1	1
516074, 6727008	3			3	3
516068, 6727009	1			1	1
516064, 6727020	8			8	8
516064, 6727024	3			3	3
516061, 6727028	4			4	4
516065, 6727027	5			5	5
516067, 6727028	3			3	3
516067, 6727033	13			13	13
516055, 6727029	1			1	1
516055, 6727026	1			1	1
516052, 6727025	4			4	4
516052, 6727020	1			1	1
516055, 6727017	7			7	7
516052, 6727017	4			4	4
516047, 6727019	2			2	2
516047, 6727012	4			4	4
516036, 6727033	1			1	1
516045, 6726988	1			1	1
516051, 6726986	10			10	10
516052, 6726990	2			2	2
516051, 6726985	1			1	1
516052, 6726986	6			6	6
516053, 6726981	5			5	5
516051, 6726980	1			1	1
516048, 6726983	1			1	1
516055, 6726979	1			1	1
516053, 6726977	1			1	1
516060, 6726980	1			1	1
516056, 6726987	5			5	5
516057, 6726989	2			2	2
516059, 6726985	2			2	2
516061, 6726981	1			1	1
516070, 6726961	1			1	1
516055, 6726997	2			2	2
516056, 6726991	2			2	2
516072, 6726996	3			3	3
516076, 6726996	4			4	4

Location of *Darwinia masonii* and number of plants recorded (i.e. mature plants, senescent plants and seedlings)

GPS Co-ordinates (MGA 1994; Zone 50)	Number of Mature Plants	Number of Senescent Plants	Number of Seedlings	Number of Mature Plants and Seedlings	Total number of Plants (mature plants, seedlings and senescent plants)
516077, 6727000	7			7	7
516081, 6727003	7			7	7
516084, 6726997	4			4	4
516081, 6726992	1			1	1
516078, 6726989	1			1	1
516074, 6726990	1			1	1
516077, 6726987	2			2	2
516088, 6726989	1			1	1
516088, 6726993	1			1	1
516096, 6726996	1			1	1
516105, 6726970	8			8	8
516101, 6726968	1			1	1
516110, 6726963	1			1	1
516115, 6726971	2			2	2
516117, 6726973	1			1	1
516118, 6726980	1			1	1
516113, 6727000	9			9	9
516110, 6726956	2			2	2
516119, 6726959	1			1	1
516444, 6726230			1	1	1
516450, 6726246			2	2	2
516446, 6726244			2	2	2
516448, 6726246		2			2
516446, 6726249		1	3	3	4
516450, 6726247			1	1	1
516445, 6726247		1	1	1	2
516446, 6726256		1	1	1	2
516448, 6726260			8	8	8
516444, 6726261		2	2	2	4
516436, 6726246		2	2	2	4
516437, 6726251			3	3	3
516432, 6726251		1			1
516429, 6726233			1	1	1
516431, 6726248			1	1	1
516427, 6726252			1	1	1
516423, 6726254			1	1	1
516415, 6726230		1			1
516415, 6726240			1	1	1
516405, 6726245		3			3
516404, 6726237		1			1
516413, 6726230		1			1
516440, 6726229	1	1		1	2
516400, 6726238	5			5	5
516401, 6726231	2	2		2	4
516399, 6726232	7	3		7	10
516397, 6726242	1			1	1
516400, 6726243	9			9	9
516401, 6726245	2			2	2
516380, 6726244	12			12	12
516384, 6726241		4			4

Location of *Darwinia masonii* and number of plants recorded (i.e. mature plants, senescent plants and seedlings)

GPS Co-ordinates (MGA 1994; Zone 50)	Number of Mature Plants	Number of Senescent Plants	Number of Seedlings	Number of Mature Plants and Seedlings	Total number of Plants (mature plants, seedlings and senescent plants)
516368, 6726237	1			1	1
516350, 6726240	1			1	1
516349, 6726242	2			2	2
516340, 6726191	1	3		1	4
516350, 6726206	3			3	3
516351, 6726210	3			3	3
516355, 6726212	2			2	2
516351, 6726190	1			1	1
516391, 6726202	1			1	1
516397, 6726198	4			4	4
516395, 6726195	2			2	2
516460, 6725776	1			1	1
516455, 6725778	4			4	4
516460, 6725752	1			1	1
516444, 6725755	7			7	7
516428, 6725756	2			2	2
516415, 6725772	4	1		4	5
516411, 6725783	2			2	2
516405, 6725783	1			1	1
516397, 6725790	4			4	4
516388, 6725788	3			3	3
516385, 6725788	21			21	21
516389, 6725774	5			5	5
516398, 6725765	4			4	4
516377, 6725772	4			4	4
516377, 6725777	1			1	1
516366, 6725776	2			2	2
516362, 6725751	1			1	1
516333, 6725749	1			1	1
516300, 6725740		3			3
516286, 6725762		1			1
516283, 6725756			1	1	1
516275, 6725747	1	2		1	3
516249, 6725825	1			1	1
516262, 6725813	4			4	4
516266, 6725818	1			1	1
516270, 6725800		1			1
516276, 6725805	1			1	1
516282, 6725800	1			1	1
516284, 6725796	1			1	1
516278, 6725812	2			2	2
516272, 6725816	1		1	2	2
516283, 6725818	1			1	1
516286, 6725826	4			4	4
516290, 6725796	14			14	14
516298, 6725816	8			8	8
516303, 6725809	1			1	1
516302, 6725805	1			1	1
516311, 6725805	1			1	1
516311, 6725800	1			1	1

Location of *Darwinia masonii* and number of plants recorded (i.e. mature plants, senescent plants and seedlings)

GPS Co-ordinates (MGA 1994; Zone 50)	Number of Mature Plants	Number of Senescent Plants	Number of Seedlings	Number of Mature Plants and Seedlings	Total number of Plants (mature plants, seedlings and senescent plants)
516315, 6725807	3			3	3
516312, 6725809	1		1	2	2
516315, 6725816	1			1	1
516323, 6725822	4		3	7	7
516320, 6725818	2			2	2
516324, 6725815	8			8	8
516327, 6725814	6			6	6
516327, 6725821	1		1	2	2
516335, 6725826	1			1	1
516328, 6725803	1			1	1
516349, 6725812			1	1	1
516351, 6725814	3			3	3
516361, 6725815	1			1	1
516374, 6725808	1			1	1
516384, 6725796	3			3	3
515283, 6728638	2	2		2	4
515270, 6728623	3			3	3
515274, 6728615	25			25	25
517230, 6724643	3			3	3
517166, 6724693		1	7	7	8
517176, 6724697			1	1	1
517180, 6724697			1	1	1
517178, 6724696			2	2	2
517185, 6724691		1			1
517186, 6724700	2	5		2	7
517182, 6724704	2			2	2
517190, 6724703	3	1		3	4
517195, 6724709		3			3
517193, 6724725	7	4		7	11
517195, 6724728	12			12	12
517202, 6724739	3			3	3
517206, 6724737	2			2	2
517209, 6724744	1			1	1
517209, 6724741			1	1	1
517232, 6724736	2			2	2
517251, 6724726	5			5	5
517255, 6724742	4			4	4
517258, 6724746	1			1	1
517890, 6726198	1	1		1	2
517899, 6726201	9			9	9
517905, 6726108	2	5		2	7
517898, 6726207	8	4		8	12
517895, 6726212	17			17	17
517899, 6726209	7	10		7	17
517908, 6726210	1			1	1
517879, 6726225	1			1	1
517890, 6726231	1			1	1
517896, 6726230	2			2	2
517898, 6726236	3			3	3

Location of *Darwinia masonii* and number of plants recorded (i.e. mature plants, senescent plants and seedlings)

GPS Co-ordinates (MGA 1994; Zone 50)	Number of Mature Plants	Number of Senescent Plants	Number of Seedlings	Number of Mature Plants and Seedlings	Total number of Plants (mature plants, seedlings and senescent plants)
517912, 6726241	2			2	2
517886, 6726247		1			1
517889, 6726251		1			1
517900, 6726274	1			1	1
517887, 6726282	7			7	7
517899, 6726278	2	2		2	4
517898, 6726285	4	2		4	6
517892, 6726293		1			1
517887, 6726295	4	4		4	8
517888, 6726363	6			6	6
517890, 6726316.	18			18	18
517895, 6726325	2			2	2
517886, 6726342	2			2	2
517890, 6726346	2			2	2
517883, 6726359		1			1
517879, 6726352	3			3	3
517877, 6726344	3			3	3
517887, 6726357		4			4
517898, 6726331	3	1		3	4
517888, 6726351	10			10	10
517891, 6726369	4			4	4
517881, 6726370	2			2	2
517887, 6726381	7			7	7
517895, 6726362	14			14	14
517902, 6726350	1			1	1
517907, 6726354	6			6	6
517891, 6726394	4			4	4
517903, 6726389	1	1		1	2
517899, 6726382	1			1	1
517904, 6726393	2			2	2
517889, 6726410	1			1	1
517889, 6726420	6			6	6
517898, 6726411		4			4
517902, 6726418	4	4		4	8
517894, 6726433	13	11		13	24
517899, 6726442	18	9		18	27
517907, 6726437	15	11		15	26
517907, 6726455					
517899, 6726463	18	11		18	29
517911, 6726458	12			12	12
517911, 6726465	8			8	8
517912, 6726469	1			1	1
517912, 6726458	7			7	7
517919, 6726455	13			13	13
517914, 6726453	16			16	16
517916, 6726446	5	5		5	10
517918, 6726446	7	11		7	18
517918, 6726437	11	9		11	20
517923, 6726434	15	7		15	22
517912, 6726218	2			2	2

Location of *Darwinia masonii* and number of plants recorded (i.e. mature plants, senescent plants and seedlings)

GPS Co-ordinates (MGA 1994; Zone 50)	Number of Mature Plants	Number of Senescent Plants	Number of Seedlings	Number of Mature Plants and Seedlings	Total number of Plants (mature plants, seedlings and senescent plants)
517907, 6726226	2	1		2	3
517916, 6726226	2	1		2	3
517915, 6726241	2			2	2
517915, 6726256	15	3		15	18
517916, 6726261	12	3		12	15
517927, 6726267	7			7	7
517935, 6726261	1			1	1
517906, 6726280	3			3	3
517910, 6726287	3			3	3
517906, 6726331	1			1	1
517911, 6726332	3			3	3
517907, 6726342	4	7		4	11
517912, 6726363	17			17	17
517920, 6726402	9			9	9
517912, 6726412	4			4	4
517916, 6726421	12			12	12
517914, 6726430	10			10	10
517904, 6726432	7	9		7	16
517915, 6726484	9	4		9	13
517915, 6726492	1			1	1
517928, 6726507	1			1	1
517936, 6726178	4			4	4
517944, 6726190	1			1	1
517945, 6726195	10			10	10
517946, 6726204	1			1	1
517945, 6726202	2			2	2
517952, 6726198	3			3	3
517954, 6726187	2			2	2
517950, 6726186	14			14	14
517940, 6726193	1			1	1
517948, 6726176	10			10	10
517999, 6726144	1			1	1
517978, 6726153	2			2	2
517982, 6726154		1			1
517987, 6726153	1			1	1
517981, 6726165	21			21	21
517987, 6726168	7	3		7	10
517997, 6726168	9			9	9
517993, 6726173	11			11	11
517998, 6726178	1	5		1	6
518002, 6726179	9	3		9	12
517995, 6726189	8			8	8
517986, 6726189	1			1	1
517986, 6726199	1			1	1
518003, 6726201	1	1		1	2
518002, 6726208	5			5	5
517938, 6726523	15	4		15	19
517951, 6726520	15	4		15	19
517961, 6726493	27			27	27
517960, 6726489	14			14	14

Location of *Darwinia masonii* and number of plants recorded (i.e. mature plants, senescent plants and seedlings)

GPS Co-ordinates (MGA 1994; Zone 50)	Number of Mature Plants	Number of Senescent Plants	Number of Seedlings	Number of Mature Plants and Seedlings	Total number of Plants (mature plants, seedlings and senescent plants)
517954, 6726490	3			3	3
517944, 6726496	6			6	6
517935, 6726488	20			20	20
517955, 6726478	3	15		3	18
517956, 6726468	5			5	5
517953, 6726459	23			23	23
517953, 6726453	24			24	24
517943, 6726449	43	19		43	62
517945, 6726428	15			15	15
517956, 6726423	10			10	10
517951, 6726416	7			7	7
517939, 6726414	5			5	5
517945, 6726383	16			16	16
517946, 6726371	3			3	3
517944, 6726353	3			3	3
517956, 6726341	10			10	10
517955, 6726329	5			5	5
517944, 6726322	2			2	2
517941, 6726303	8	4		8	12
517956, 6726285	1			1	1
517957, 6726260	3			3	3
517940, 6726248	14			14	14
517952, 6726240	4		1	5	5
517952, 6726230	1			1	1
517939, 6726225	1			1	1
518003, 6726220	2		1	3	3
517984, 6726231	4			4	4
517980, 6726242	7			7	7
517980, 6726251	1			1	1
517999, 6726262	9			9	9
517994, 6726270	3			3	3
517996, 6726277	2			2	2
517993, 6726304	2			2	2
517989, 6726312	10			10	10
518001, 6726317	8			8	8
517990, 6726332	7			7	7
517981, 6726343	1			1	1
517992, 6726349	13			13	13
517990, 6726363	10			10	10
517981, 6726373	7			7	7
517996, 6726386	8			8	8
517988, 6726396	17			17	17
517983, 6726419	45			45	45
517998, 6726411	10			10	10
517984, 6726433	1			1	1
517979, 6726436	3			3	3
517994, 6726469	2			2	2
518008, 6726553	2			2	2
518013, 6726540	7			7	7
518016, 6726511	15			15	15

Location of *Darwinia masonii* and number of plants recorded (i.e. mature plants, senescent plants and seedlings)

GPS Co-ordinates (MGA 1994; Zone 50)	Number of Mature Plants	Number of Senescent Plants	Number of Seedlings	Number of Mature Plants and Seedlings	Total number of Plants (mature plants, seedlings and senescent plants)
518020, 6726479	10			10	10
518013, 6726471	7			7	7
518002, 6726467	1			1	1
518026, 6726454	1			1	1
518008, 6726451	23			23	23
518001, 6726446	1			1	1
518017, 6726434	5			5	5
518001, 6726392	2			2	2
518022, 6726379	2	1		2	3
518016, 6726381	1			1	1
518009, 6726377	27			27	27
518005, 6726368	31			31	31
518013, 6726366	35			35	35
518005, 6726352	7			7	7
518009, 6726345	20			20	20
518011, 6726345	43			43	43
518023, 6726340	39			39	39
518009, 6726329	48			48	48
518014, 6726310	53			53	53
518007, 6726271	9			9	9
518073, 6726226	6			6	6
518056, 6726229	1			1	1
518054, 6726237	5			5	5
518076, 6726395	25			25	25
518072, 6726411	4			4	4
518069, 6726434	5			5	5
518082, 6726433	4	1		4	5
518074, 6726445	2			2	2
518069, 6726472		1	1	1	2
518058, 6726474	5			5	5
518107, 6726428	1			1	1
518105, 6726296		1			1
518109, 6726273	1			1	1
518134, 6726229	1			1	1
518113, 6726232	1			1	1
518047, 6726209	13			13	13
518204, 6726044	6			6	6
518196, 6726057	2			2	2
518199, 6726077	1			1	1
518180, 6726097	4			4	4
518175, 6726101	20			20	20
518183, 6726108	2			2	2
518184, 6726126	5			5	5
518183, 6726175	5			5	5
518187, 6726342	1			1	1
518186, 6726360	1			1	1
518180, 6726371	5			5	5
518178, 6726378	8		1	9	9
518197, 6726379	4			4	4
518202, 6726384	2			2	2

Location of *Darwinia masonii* and number of plants recorded (i.e. mature plants, senescent plants and seedlings)

GPS Co-ordinates (MGA 1994; Zone 50)	Number of Mature Plants	Number of Senescent Plants	Number of Seedlings	Number of Mature Plants and Seedlings	Total number of Plants (mature plants, seedlings and senescent plants)
518207, 6726444	1			1	1
518227, 6726431		1			1
518233, 6726428	3			3	3
518226, 6726417	4			4	4
518226, 6726392	1			1	1
518226, 6726382	6	1		6	7
518234, 6726380	10	7		10	17
518232, 6726130	1			1	1
518223, 6726099	3			3	3
518227, 6726091	12			12	12
518235, 6726002	1			1	1
518234, 6725993	14			14	14
518220, 6725993	4			4	4
518228, 6725981	7			7	7
518263, 6725918	2			2	2
518270, 6725918	8		1	9	9
518274, 6725928	6			6	6
518262, 6725938	7			7	7
518262, 6725946	4			4	4
518279, 6725959	15			15	15
518272, 6726002	7			7	7
518270, 6726026	9			9	9
518278, 6726028	10			10	10
518278, 6726034	8		1	9	9
518283, 6726024	9			9	9
518278, 6726042	2			2	2
518264, 6726063	1			1	1
518268, 6726071	6			6	6
518285, 6726090	5			5	5
518277, 6726151	11	6		11	17
518282, 6726164	18	5		18	23
518284, 6726180	3			3	3
518302, 6726145	1			1	1
518313, 6726030	16			16	16
518301, 6726019	5			5	5
518314, 6725967	4			4	4
518311, 6725914	3			3	3
518340, 6725868	4		1	5	5
518353, 6725859	4		2	6	6
518351, 6725883	1			1	1
518359, 6725888	1			1	1
518353, 6725901	9		1	10	10
518355, 6725910	5			5	5
518347, 6725927	10			10	10
518347, 6725960	3			3	3
518350, 6726003	7			7	7
518352, 6726006	3			3	3
518355, 6726013	5			5	5
518351, 6726026	8			8	8
518370, 6726029	20			20	20

Location of *Darwinia masonii* and number of plants recorded (i.e. mature plants, senescent plants and seedlings)

GPS Co-ordinates (MGA 1994; Zone 50)	Number of Mature Plants	Number of Senescent Plants	Number of Seedlings	Number of Mature Plants and Seedlings	Total number of Plants (mature plants, seedlings and senescent plants)
518360, 6726034	15			15	15
518413, 6726085	5			5	5
518426, 6725954	35			35	35
518409, 6725925	20			20	20
518408, 6725917	10			10	10
518418, 6725892	20			20	20
518431, 6725888	10	17		10	27
518420, 6725884	20			20	20
518507, 6725873	4	1		4	5
518502, 6725882	1			1	1
518487, 6725892	6			6	6
518503, 6725900	4			4	4
518502, 6725908	4			4	4
518474, 6725914	10			10	10
518478, 6725930	17			17	17
518476, 6725940	1			1	1
518495, 6725944	15			15	15
518480, 6725951	5		1	6	6
518491, 6725960	4			4	4
518503, 6725967	13			13	13
518493, 6726038	1			1	1
518500, 6726032	7			7	7
518504, 6726039	8			8	8
518487, 6726051	11			11	11
518497, 6726064	20			20	20
518495, 6726086	20	7		20	27
518475, 6726099	15			15	15
518499, 6726090	22			22	22
518515, 6726079	1			1	1
518520, 6726072	19			19	19
518516, 6726056	10			10	10
518523, 6726046	13		21	34	34
518512, 6726007	1			1	1
518507, 6725985	14			14	14
518512, 6725966	3			3	3
517847, 6726215	1		17	18	18
517841, 6726237	9			9	9
517854, 6726252	3			3	3
517846, 6726295	2			2	2
517837, 6726313	5			5	5
517846, 6726314	1			1	1
517849, 6726333	18			18	18
517842, 6726355	7			7	7
517838, 6726390	1	1		1	2
517845, 6726388	1			1	1
517848, 6726389	1			1	1
517842, 6726397	1			1	1
517834, 6726400	1			1	1
517838, 6726404	2			2	2
517853, 6726419	1			1	1

Location of *Darwinia masonii* and number of plants recorded (i.e. mature plants, senescent plants and seedlings)

GPS Co-ordinates (MGA 1994; Zone 50)	Number of Mature Plants	Number of Senescent Plants	Number of Seedlings	Number of Mature Plants and Seedlings	Total number of Plants (mature plants, seedlings and senescent plants)
517844, 6726427	7	1		7	8
517836, 6726429	15			15	15
517838, 6726436	8	1		8	9
517836, 6726444	26	3		26	29
517841, 6726454	2			2	2
517862, 6726438	3			3	3
517828, 6726480	4			4	4
517832, 6726516	12			12	12
517803, 6726537	4			4	4
517797, 6726474	1			1	1
517797, 6726471	15		1	16	16
517793, 6726463	14			14	14
517793, 6726463	11			11	11
517809, 6726429	3			3	3
517800, 6726399	9			9	9
517789, 6726398	1			1	1
517804, 6726395	8			8	8
517795, 6726381	6			6	6
517803, 6726373	6			6	6
517809, 6726371	3			3	3
517808, 6726346	23			23	23
517804, 6726336	3			3	3
517800, 6726325	9			9	9
517794, 6726312	2			2	2
517796, 6726302	15			15	15
517794, 6726295	17			17	17
517798, 6726284	3			3	3
517804, 6726271	5			5	5
517798, 6726268	2			2	2
517751, 6726277	1			1	1
517753, 6726284	6			6	6
517765, 6726294	3			3	3
517761, 6726305	2			2	2
517751, 6726341	8			8	8
517754, 6726349	4			4	4
517752, 6726374	5			5	5
517766, 6726383	4			4	4
517760, 6726386	4			4	4
517760, 6726415	3			3	3
517772, 6726413	1			1	1
517760, 6726484	25			25	25
517771, 6726494	15			15	15
517764, 6726499	29			29	29
517780, 6726546	1			1	1
517719, 6726516	4			4	4
517715, 6726491	1			1	1
517733, 6726471	2			2	2
517738, 6726433	4			4	4
517719, 6726390	1			1	1
517718, 6726367	1			1	1

Location of *Darwinia masonii* and number of plants recorded (i.e. mature plants, senescent plants and seedlings)

GPS Co-ordinates (MGA 1994; Zone 50)	Number of Mature Plants	Number of Senescent Plants	Number of Seedlings	Number of Mature Plants and Seedlings	Total number of Plants (mature plants, seedlings and senescent plants)
517720, 6726331	2			2	2
517720, 6726322	1			1	1
517712, 6726312	7			7	7
517715, 6726302	5			5	5
517727, 6726302	1			1	1
517718, 6726272	4			4	4
517720, 6726270	1			1	1
517768, 6726216	9			9	9
517790, 6726226	2			2	2
518851, 6726207	12			12	12
518358, 6726250	2	2		2	4
518353, 6726268	1			1	1
518374, 6726252	1			1	1
518383, 6726243	1			1	1
518375, 6726258	2			2	2
518581, 6726004	6			6	6
518596, 6726011	1			1	1
518597, 6725996	2			2	2
518604, 6726000	8			8	8
518615, 6725997	4			4	4
518625, 6725995	20			20	20
518629, 6726002	10	10		10	20
518639, 6726009	7			7	7
518637, 6726027	1			1	1
518645, 6725994	16			16	16
518634, 6725994	15			15	15
518633, 6725980	43			43	43
518615, 6725940	23			23	23
518601, 6725940	1			1	1
518594, 6725930	9			9	9
518590, 6725924	16			16	16
518577, 6725873	3			3	3
518579, 6725856	6	3		6	9
518536, 6725837	40			40	40
518710, 6725796	10			10	10
518716, 6725807	47			47	47
518749, 6725820	36			36	36
518736, 6725809	32			32	32
518717, 6725787	17			17	17
518718, 6725773	20			20	20
518757, 6725801	11			11	11
518766, 6725810	29			29	29
518775, 6725801	23			23	23
518773, 6725796	41			41	41
518763, 6725763	37			37	37
518787, 6725762	228			228	228
518814, 6725770	28			28	28
518825, 6725787	35			35	35
518862, 6725728	25			25	25
518880, 6725732	34			34	34

Location of *Darwinia masonii* and number of plants recorded (i.e. mature plants, senescent plants and seedlings)

GPS Co-ordinates (MGA 1994; Zone 50)	Number of Mature Plants	Number of Senescent Plants	Number of Seedlings	Number of Mature Plants and Seedlings	Total number of Plants (mature plants, seedlings and senescent plants)
518899, 6725751	16			16	16
518902, 6725760	12			12	12
518925, 6725759	5			5	5
518893, 6725721	47			47	47
518910, 6725708	31			31	31
518909, 6725868	17			17	17
518881, 6725882	16			16	16
518773, 6725917	21			21	21
518721, 6725914	8			8	8
517502, 6725466	1			1	1
517512, 6725529	1			1	1
517506, 6725539	1			1	1
517494, 6725568					
517456, 6725594	1		1	2	2
517441, 6725574	2			2	2
517443, 6725567	1			1	1
517434, 6725561	2			2	2
517423, 6725568	2			2	2
517423, 6725561	1	1		1	2
517407, 6725593	2			2	2
517393, 6725617	1			1	1
517432, 6725684		1	5	5	6
517409, 6725679	2	1		2	3
517398, 6725686			2	2	2
519309, 6725559	2			2	2
519285, 6725548	1			1	1
519281, 6725542	1			1	1
519261, 6725500	7			7	7
519257, 6725369	17			17	17
519279, 6725585	5			5	5
519280, 6725609	6			6	6
519507, 6725004	3			3	3
519469, 6725005	1			1	1
519457, 6725075	5			5	5
519457, 6725088	1			1	1
519453, 6725104	4			4	4
519418, 6725162	24			24	24
519404, 6725128	6			6	6
519389, 6725120	11			11	11
519371, 6725125	12			12	12
519375, 6725134	11			11	11
519402, 6725182	9			9	9
519359, 6725015	17			17	17
519361, 6725025	13			13	13
519351, 6725039	19			19	19
519303, 6725052	11			11	11
519274, 6725125	1			1	1
517862; 6726214	1			1	1
517883; 6726209	2			2	2
517873; 6726226	2			2	2

Location of *Darwinia masonii* and number of plants recorded (i.e. mature plants, senescent plants and seedlings)

GPS Co-ordinates (MGA 1994; Zone 50)	Number of Mature Plants	Number of Senescent Plants	Number of Seedlings	Number of Mature Plants and Seedlings	Total number of Plants (mature plants, seedlings and senescent plants)
517866; 6726226	1			1	1
517871; 6726239	5			5	5
517870; 6726262	4			4	4
517862; 6726270	11			11	11
517881; 6726281	25			25	25
517854; 6726293	1			1	1
517869; 6726317	15			15	15
517877; 6726305	19	1	1	20	21
517880; 6726329	2			2	2
517873; 6726340	4			4	4
517871; 6726357	5			5	5
517863; 6726375	3			3	3
517884; 6726371	4			4	4
517861; 6726381	2			2	2
517884; 6726394	5			5	5
517863; 6726416	2			2	2
517891; 6726453	50			50	50
517919; 6726468	6			6	6
517918; 6726447	106			106	106
517918; 6726419	44			44	44
517929; 6726422	17			17	17
517940; 6726409	10			10	10
517943; 6726231	1			1	1
517919; 6726240	1			1	1
517929; 6726252	19			19	19
517944; 6726268	2			2	2
517921; 6726282	4			4	4
517931; 6726282	5			5	5
517922; 6726293	9			9	9
517943; 6726288	6			6	6
517924; 6726297	13			13	13
517946; 6726323	7			7	7
517937; 6726332	4			4	4
517930; 6726356	11			11	11
517939; 6726370	5			5	5
517917; 6726374	4			4	4
517933; 6726391	5			5	5
517940; 6726396	3			3	3
517948; 6726401	6			6	6
517972; 6726170	2		2	4	4
517985; 6726173	10			10	10
517974; 67261941	7			7	7
517975; 6726196	2			2	2
517977; 6726210	2			2	2
518022; 6726202	2			2	2
518000; 6726203	11			11	11
518015; 6726185	3			3	3
518101; 6726176	9			9	9
518009; 6726166	7			7	7
518007; 6726155	1			1	1

Location of *Darwinia masonii* and number of plants recorded (i.e. mature plants, senescent plants and seedlings)

GPS Co-ordinates (MGA 1994; Zone 50)	Number of Mature Plants	Number of Senescent Plants	Number of Seedlings	Number of Mature Plants and Seedlings	Total number of Plants (mature plants, seedlings and senescent plants)
518020; 6726183	3			3	3
518009; 6726140	2			2	2
517978; 6726525	1			1	1
517967; 6726513	8			8	8
517969; 6726493	24			24	24
517954; 6726480	7			7	7
517956; 6726468	18			18	18
517980; 6726455	2			2	2
517954; 6726451	20			20	20
517973; 6726441	16			16	16
517951; 6726444	19			19	19
517986; 6726438	10			10	10
517966; 6726427	2			2	2
517984; 6726420	11			11	11
517978; 6726403	20			20	20
517954; 6726402	17			17	17
517984; 6726384	16			16	16
517965; 6726371	18			18	18
517906; 6726354	14			14	14
517979; 6726332	3			3	3
517991; 6726314	3			3	3
517960; 6726303	2			2	2
517965; 6726275	3			3	3
517969; 6726260	5			5	5
517967; 6726248	2			2	2
517961; 6726242	4			4	4
517955; 6726232	3			3	3
518000; 6726238	8			8	8
518020; 6726245	9			9	9
518021; 6726256	7			7	7
518015; 6726268	4			4	4
518014; 6726279	4			4	4
518004; 6726297	5			5	5
518026; 6726299	11			11	11
518010; 6726309	12			12	12
518007; 6726317	8			8	8
518023; 6726317	17			17	17
518000; 6726332	41			41	41
518001; 6726338	4			4	4
518025; 6726342	28			28	28
518018; 6726353	9			9	9
518003; 6726358	13			13	13
518015; 6726364	22			22	22
518026; 6726362	4			4	4
518021; 6726370	1			1	1
518000; 6726380	38			38	38
518006; 6726387	6			6	6
517996; 6726403	8			8	8
518017; 6726408	2			2	2
517998; 6726425	11			11	11

Location of *Darwinia masonii* and number of plants recorded (i.e. mature plants, senescent plants and seedlings)

GPS Co-ordinates (MGA 1994; Zone 50)	Number of Mature Plants	Number of Senescent Plants	Number of Seedlings	Number of Mature Plants and Seedlings	Total number of Plants (mature plants, seedlings and senescent plants)
518003; 6726438	13			13	13
518009; 6726449	19			19	19
518029; 6726470	25			25	25
518015; 6726478	4			4	4
518023; 6726484	5			5	5
518015; 6726505	9			9	9
518019; 6726518	4			4	4
518017; 6726530	10			10	10
518020; 6726346	24			24	24
518019; 6726572	2			2	2
518050; 6726492	2			2	2
518042; 6726476	7			7	7
518052; 6726470	9			9	9
518061; 6726464	7			7	7
518037; 6726454	8		1	9	9
518046; 6726443	3			3	3
518056; 6726429	1			1	1
518040; 6726354	1			1	1
518040; 6726304	8			8	8
518058; 6726303	2			2	2
518037; 6726293	6			6	6
518057; 6726240	1			1	1
518040; 6726228	22			22	22
518053; 6726218	14			14	14
518084; 6726228	2			2	2
518092; 6726242	2			2	2
518084; 6726246	6			6	6
518091; 6726392	12			12	12
518083; 6726407	3			3	3
518089; 6726423	7			7	7
518091; 6726430	3			3	3
518090; 6726449	1			1	1
518172; 6726385	4			4	4
518160; 6726384	12			12	12
518167; 6726210	1			1	1
518178; 6726187					
518151; 6726188					
518136; 6726191	5			5	5
518111; 6726182	3			3	3
518098; 6726185	2			2	2
518076; 6726204	2			2	2
518064; 6726201	1			1	1
518210; 6726014	5			5	5
518234; 6726033	6			6	6
518209; 6726065	5			5	5
518224; 6726083	23			23	23
518213; 6726112	1			1	1
518210; 6726136	2			2	2
518220; 6726156	1			1	1
518207; 6726345	9			9	9

Location of *Darwinia masonii* and number of plants recorded (i.e. mature plants, senescent plants and seedlings)

GPS Co-ordinates (MGA 1994; Zone 50)	Number of Mature Plants	Number of Senescent Plants	Number of Seedlings	Number of Mature Plants and Seedlings	Total number of Plants (mature plants, seedlings and senescent plants)
518207; 6726364	2			2	2
518218; 6726369	1			1	1
518218; 6726377	7			7	7
518211; 6726389	2			2	2
518217; 6726400	2			2	2
518216; 6726420	7			7	7
518210; 6726437	5			5	5
518269; 6726401	1			1	1
518252; 6726388	2			2	2
518240; 6726387	9			9	9
518236; 6726384	7			7	7
518247; 6726128	2			2	2
518255; 6726118	1			1	1
518244; 6726098	1			1	1
518257; 6726068	6			6	6
518247; 6726041	32			32	32
518247; 6725960	24			24	24
518232; 6725964	3			3	3
518224; 6725960	2			2	2
518258; 6725926	3			3	3
518299; 6725909	4			4	4
518294; 6725928	7			7	7
518305; 6725924	7			7	7
518287; 6725944	3			3	3
518280; 6725950	4			4	4
518303; 6725946	7			7	7
518295; 6725966	8			8	8
518288; 6725974	5			5	5
518294; 6725992	2			2	2
518294; 6726000	2			2	2
518285; 6726017	9			9	9
518295; 6726022	5			5	5
518289; 6726034	4			4	4
518302; 6726035	9			9	9
518339; 6726038	4			4	4
518328; 6726029	14			14	14
518332; 6726019	2			2	2
518336; 6726009	3			3	3
518331; 6725998	4			4	4
518322; 6725994	9		1	10	10
518320; 6725984	4			4	4
518320; 6725972	10			10	10
518340; 6725983	5			5	5
518330; 6725957	2			2	2
518315; 6725948	2			2	2
518319; 6725932	7			7	7
518339; 6725926	5			5	5
518339; 6725910	11			11	11
518320; 6725888	1			1	1
518340; 6725583	10			10	10

Location of *Darwinia masonii* and number of plants recorded (i.e. mature plants, senescent plants and seedlings)

GPS Co-ordinates (MGA 1994; Zone 50)	Number of Mature Plants	Number of Senescent Plants	Number of Seedlings	Number of Mature Plants and Seedlings	Total number of Plants (mature plants, seedlings and senescent plants)
518345; 6725858	14			14	14
518372; 6725865	1			1	1
518380; 6725867	2			2	2
518376; 6725881	13			13	13
518370; 6725902	1			1	1
518375; 6725899	1			1	1
518361; 6725931	10			10	10
518364; 6725942	6			6	6
518368; 6725963	4			4	4
518380; 6725984	5			5	5
518460; 6725597	4			4	4
518441; 6725966	10			10	10
518453; 6725959	3			3	3
518448; 6725953	10			10	10
518442; 6725927	5			5	5
518440; 6725892	14			14	14
518459; 6725874	8			8	8
518449; 6725873	5			5	5
518439; 6725875	9			9	9
518448; 6725861	3			3	3
518459; 6725840	2			2	2
518437; 6725854	2			2	2
518422; 6725845	1			1	1
518413; 6725854	3			3	3
518405; 6725857	3			3	3
518220; 6725946	1			1	1
518220; 6725936	3			3	3
518229; 6725928	6			6	6
518225; 6725931	2			2	2
518245; 6725922	8			8	8
518274; 6725911	1			1	1
518335; 6725809	1			1	1
518530; 6725810	3			3	3
518543; 6725805	1			1	1
518560; 6725788	5			5	5
518565; 6725788	5			5	5
518580; 6725796	2			2	2
518596; 6725803	10			10	10
518547; 6725801	8		1	9	9
518658; 6725794	11			11	11
518680; 6725782	4			4	4
518674; 6725772	7			7	7
518680; 6725758	4			4	4
518652; 6725765	5			5	5
518638; 6725773	5		2	7	7
518593; 6725790	2			2	2
518530; 6725771	2			2	2
517832; 6726229	10			10	10
517820; 6726261	10			10	10
517823; 6726275	5			5	5

Location of *Darwinia masonii* and number of plants recorded (i.e. mature plants, senescent plants and seedlings)

GPS Co-ordinates (MGA 1994; Zone 50)	Number of Mature Plants	Number of Senescent Plants	Number of Seedlings	Number of Mature Plants and Seedlings	Total number of Plants (mature plants, seedlings and senescent plants)
517806; 6726303	15			15	15
517818; 6726318	20			20	20
517810; 6726326	25			25	25
517815; 6726330	9			9	9
517832; 6726335	8			8	8
517820; 6726349	4			4	4
517812; 6726365	5			5	5
517825; 6726363	4			4	4
517818; 6726382	8			8	8
517819; 6726393	6			6	6
517816; 6726409	3			3	3
517820; 6726439	7			7	7
517818; 6726449	10			10	10
517824; 6726463	7			7	7
517828; 6726476	1			1	1
517828; 6726485	12			12	12
517830; 6726500	4			4	4
517824; 6726502	2			2	2
517825; 6726527	8			8	8
517813; 6726544	6			6	6
517826; 6726533	2			2	2
517788; 6726536	8			8	8
517770; 6726505	10			10	10
517780; 6726487	8			8	8
517781; 6726471	9			9	9
517787; 6726460	3			3	3
517775; 6726413	4			4	4
517767; 6726395	11			11	11
517785; 6726376	3			3	3
517776; 6726357	2			2	2
517783; 6726351	2			2	2
517772; 6726350	6			6	6
517788; 6726331	7			7	7
517778; 6726320	4			4	4
517768; 6726325	3			3	3
517777; 6726310	13			13	13
517783; 6726300	22			22	22
517780; 6726288	4			4	4
517791; 6726281	10			10	10
517772; 6726282	15			15	15
517784; 6726266	9			9	9
517735; 6726272	6			6	6
517742; 6726293	3			3	3
517735; 6726299	2			2	2
517750; 6726316	1			1	1
517739; 6726349	2			2	2
517731; 6726370	5			5	5
517734; 6726413	23			23	23
517738; 6726420	3			3	3
517740; 6726451	1			1	1

Location of *Darwinia masonii* and number of plants recorded (i.e. mature plants, senescent plants and seedlings)

GPS Co-ordinates (MGA 1994; Zone 50)	Number of Mature Plants	Number of Senescent Plants	Number of Seedlings	Number of Mature Plants and Seedlings	Total number of Plants (mature plants, seedlings and senescent plants)
517732; 6726476	3			3	3
517746; 6726486	4			4	4
517753; 6726486	1			1	1
517701; 6726566	5			5	5
517703; 6726533	7			7	7
517705; 6726537	4			4	4
517704; 6726520	4			4	4
517797; 6726526	15			15	15
517705; 6726506	16			16	16
517712; 6726466	2			2	2
517722; 6726445	2			2	2
517718; 6726400	8			8	8
517709; 6726391	2			2	2
517769; 6726368	6			6	6
517697; 6726356	2			2	2
517693; 6726303	14		1	15	15
517702; 6726299	2			2	2
517710; 6726301	4			4	4
517705; 6726270	25			25	25
517704; 6726256	8			8	8
517720; 6726267	11			11	11
517731; 6726262	4			4	4
517770; 6726228	57			57	57
517778; 6726229	29			29	29
518580; 6726024	9			9	9
518605; 6726020	10			10	10
518614; 6726007	9			9	9
518637; 6726025	19			19	19
518650; 6725987	7			7	7
518678; 6725903	1			1	1
518670; 6725891	2			2	2
518663; 6725888	5			5	5
518662; 6725877	8			8	8
518653; 6725812	5			5	5
518630; 6725853	18			18	18
518655; 6725825	5			5	5
518647; 6725810	13		1	14	14
518656; 6725806	5			5	5
518665; 6725790	21			21	21
518697; 6725790	15		1	16	16
518710; 6725785	5			5	5
518682; 6725769	8			8	8
518700; 6725755	3			3	3
518724; 6725752	10			10	10
518743; 6725747	8			8	8
518761; 6725761	17			17	17
518769; 6725738	8			8	8
518778; 6725731	4			4	4
518791; 6725734	17			17	17
518800; 6725733	10			10	10

Location of *Darwinia masonii* and number of plants recorded (i.e. mature plants, senescent plants and seedlings)

GPS Co-ordinates (MGA 1994; Zone 50)	Number of Mature Plants	Number of Senescent Plants	Number of Seedlings	Number of Mature Plants and Seedlings	Total number of Plants (mature plants, seedlings and senescent plants)
518800; 6725715	8			8	8
518853; 6725708	25			25	25
518872; 6725711	16			16	16
518887; 6725700	22			22	22
518899; 6725697	21			21	21
518958; 6725682	16			16	16
518964; 6725667	18			18	18
518995; 6725655	16			16	16
519027; 6725678	18			18	18
518964; 6725708	36			36	36
518957; 6725719	6			6	6
518942; 6725718	4			4	4
518877; 6725759	3			3	3
518828; 6725779	4			4	4
518782; 6725820	6			6	6
518709; 6725837	5			5	5
518671; 6725845	4			4	4
518681; 6725842	6			6	6
518632; 6725912	4			4	4
518632; 6725953	4			4	4
519348; 6725485	10			10	10
519333; 6725488	1			1	1
519291; 6725488	5		1	6	6
519202; 6725551	9			9	9
519149; 6725572	7			7	7
519146; 6725585	7			7	7
519151; 6725604	8			8	8
519147; 6725621	3			3	3
519143; 6725628	10			10	10
519148; 6725644	14			14	14
519125; 6725631	17			17	17
519106; 6725636	21			21	21
519124; 6725634	6			6	6
519117; 6725662	9			9	9
519084; 6725632	14			14	14
519066; 6725646	17			17	17
519264; 6725688	7			7	7
519035; 6725704	11			11	11
519008; 6725721	19			19	19
518962; 6725758	5		1	6	6
519398; 6725068	12			12	12
519433; 6725017	14			14	14
519446; 6725008	3			3	3
519453; 6724998	9			9	9
519463; 6724945	7			7	7
519448; 6724923	3			3	3
519430; 6724937	2			2	2
519394; 6725015	24			24	24
519368; 6725044	27			27	27
519380; 6725053	3			3	3

Location of *Darwinia masonii* and number of plants recorded (i.e. mature plants, senescent plants and seedlings)

GPS Co-ordinates (MGA 1994; Zone 50)	Number of Mature Plants	Number of Senescent Plants	Number of Seedlings	Number of Mature Plants and Seedlings	Total number of Plants (mature plants, seedlings and senescent plants)
519363; 6725081	18			18	18
519346; 6725102	22			22	22
519340; 6725138	24		1	25	25
519345; 6725162	8			8	8
Total	14307	541	1725	16032	16573