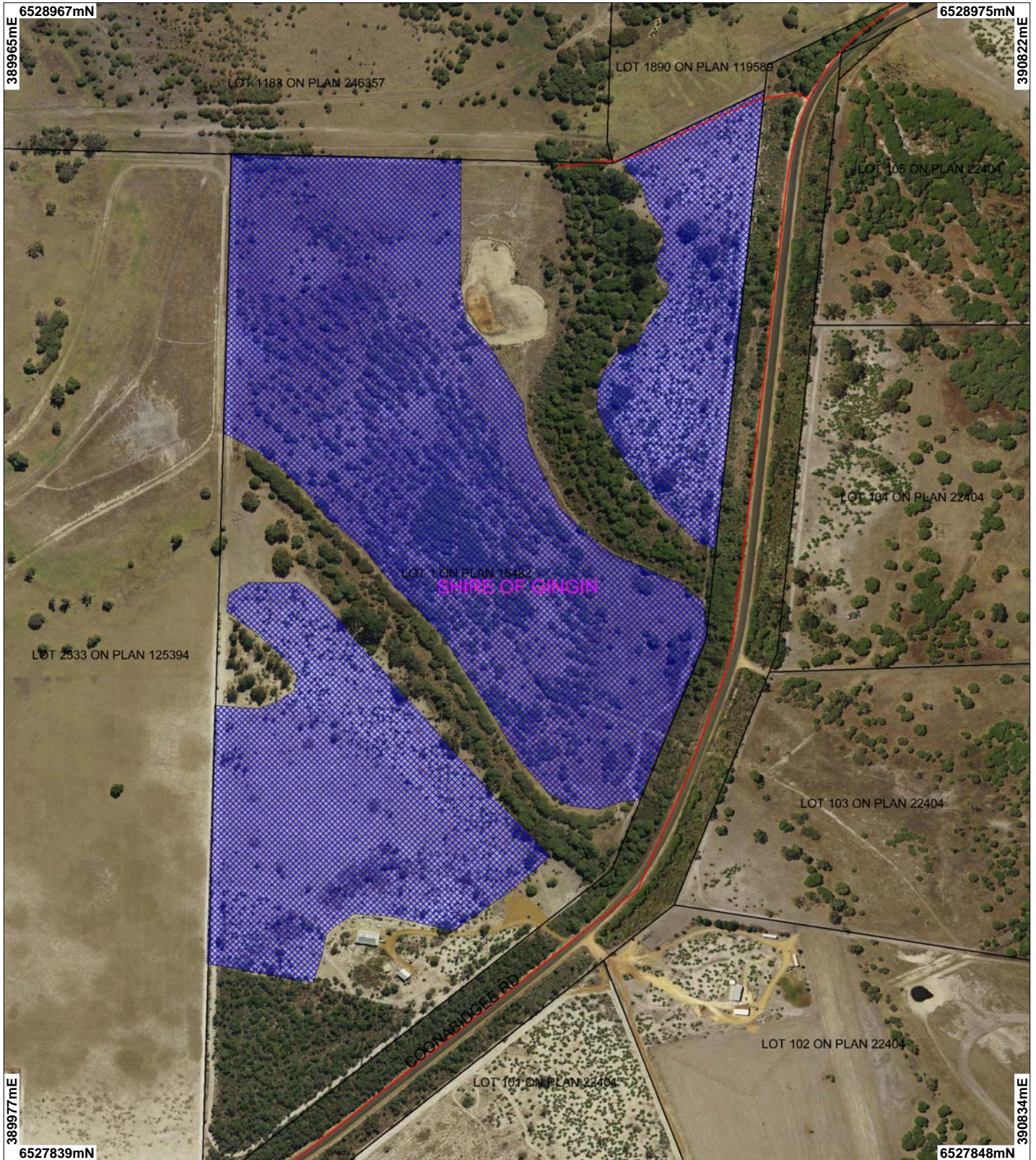
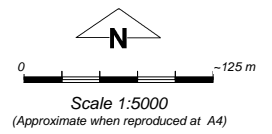


CPS 5872/1 - Map



LEGEND

- | | |
|---|--------------------------|
| Clearing Instruments | |
|  | Areas Applied to Clear |
|  | Local Government |
|  | Cadastre |
| | Perth Metropolitan Area |
| | North 15cm Orthomosaic - |
| | Landate 2012 |



Geocentric Datum Australia 1994
 Note: the data in this map have not been projected. This may result in geometric distortion or measurement inaccuracies.

..... Date

Officer with delegated authority under Section 20 of the Environmental Protection Act 1986

Information derived from this map should be confirmed with the data custodian acknowledged by the agency acronym in the legend.



* Project Data is denoted by asterisk. This data has not been quality assured. Please contact map author for details.