

Survey Results

On the basis of available spatial data from previous flora and vegetation surveys reviewed for this Proposal (refer to **Table 4**) and desktop assessment results provided in **Table 6**, no Threatened flora has been recorded within the Proposal area or surrounding assessment areas.

A total of 58 Priority Flora records have been recorded from Engenium (2015) and the reviewed previous biological surveys (refer to **Figure 7** to **Figure 9**). Out of these, only 11 taxa have been recorded within the BOTS Proposal Area, including three P1 species, one P2 and seven P3 species.

A list of all Priority Flora species recorded in the Proposal Area from the Engenium (2015) and previous biological surveys is provided in **Table 7**. Locations of Priority Flora records in relation to the Proposal Area are shown on **Figure 10** to **Figure 12**.

TABLE 7: PRIORITY FLORA SPECIES RECORDED WITHIN THE PROPOSAL AREA (FROM ENGENIUM (2015) AND PREVIOUS SURVEYS)

Species	Conservation Status	No. of Records within the BOTS Proposal Area
<i>Goodenia omearana</i> ms.	P1	2
<i>Heliotropium muticum</i>	P1	11
<i>Tephrosia rosea</i> var. Port Hedland (A.S. George 1114)	P1	1
<i>Paspalidium retiglume</i>	P2	2
<i>Abutilon trudgenii</i> ms.	P3	1
<i>Bulbostylis burbidgeae</i>	P3	1
<i>Goodenia nuda</i>	P3	3
<i>Gymnanthera cunninghamii</i>	P3	2
<i>Hibiscus brachysiphonius</i>	P3	3
<i>Sida</i> sp. Wittenoom (W.R. Barker 1962)	P3	2
<i>Themeda</i> sp. Hamersley Station (M.E. Trudgen 11431)	P3	4
TOTAL NUMBER OF PRIORITY FLORA RECORDS	-	36

5.2.2. VEGETATION

Desktop Assessment

Desktop searches of DPAW and DotE databases were conducted for the Proposal Area to identify any vegetation and ecological communities of conservation significance likely to occur within the Proposal area. This included a search of the following databases:

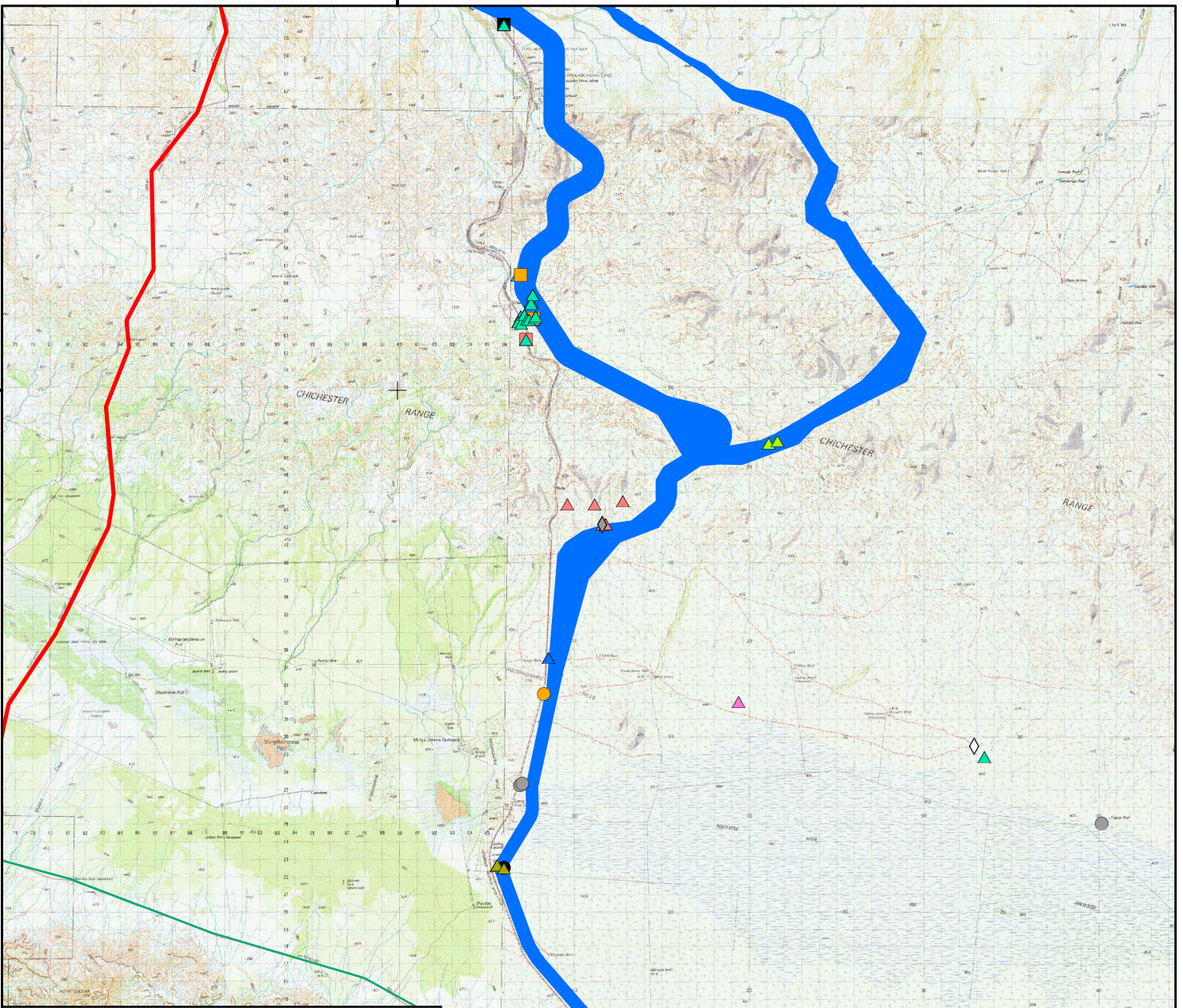
- DPAW Threatened and Priority Ecological Communities Database
- DotE Protected Matters Search Tool.

No Commonwealth (EPBC Act) or State (WC Act) listed Threatened Ecological Communities (TECs) were recorded as occurring within 50 km of the BOTS Proposal Area. Six Priority Ecological Communities (PECs) were recorded as occurring within 50 km of the Proposal Area, of which two occur within the Proposal Area. A list of each of the PECs recorded within the vicinity of the Proposal Area is provided in **Table 8** and locations of the PECs in relation to the Proposal Area are shown in **Figure 13**.

700000

7550000

7500000



Legend

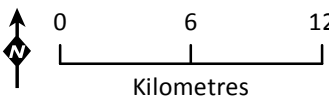
- Great Northern Hwy
- Major Roads
- BOTS Proposal Area
- MRL Project Site

Priority Flora Records

Species

- *Eremophila spongiorca* ms. - Priority 1
- *Goodenia omearana* ms. - Priority 1
- *Josephinia* ?sp? Marandoo (ME Trudgen 1554) - Priority 1
- *Gonocarpus ephemerus* - Priority 2
- *Ischaemum albobillosum* - Priority 2
- *Paspalidium rryiglume* - Priority 2
- △ *Abutilon trudgenii* ms. - Priority 3
- △ *Eriachne tenuiculmis* - Priority 3
- ▲ *Gymnanthera cunninghamii* - Priority 3
- ▲ *Hibiscus brachysiphonius* - Priority 3
- ▲ *Polymeria* sp. Hamersley (M.E. Trudgen 11353) - Priority 3
- ▲ *Rostellularia adscendens* var. *latifolia* - Priority 3
- ▲ *Sida* sp. Wittenoom (W.R. Barker 1962) - Priority 3
- ▲ *Themasa* sp. Hamersley Station (M.E. Trudgen 11,431) - Priority 3
- ◇ *Eremophila youngii* subsp. *lepidota* - Priority 4
- ◇ *Goodenia stellata* - Priority 4

Iron Valley Project



Absolute Scale - 1:346,395

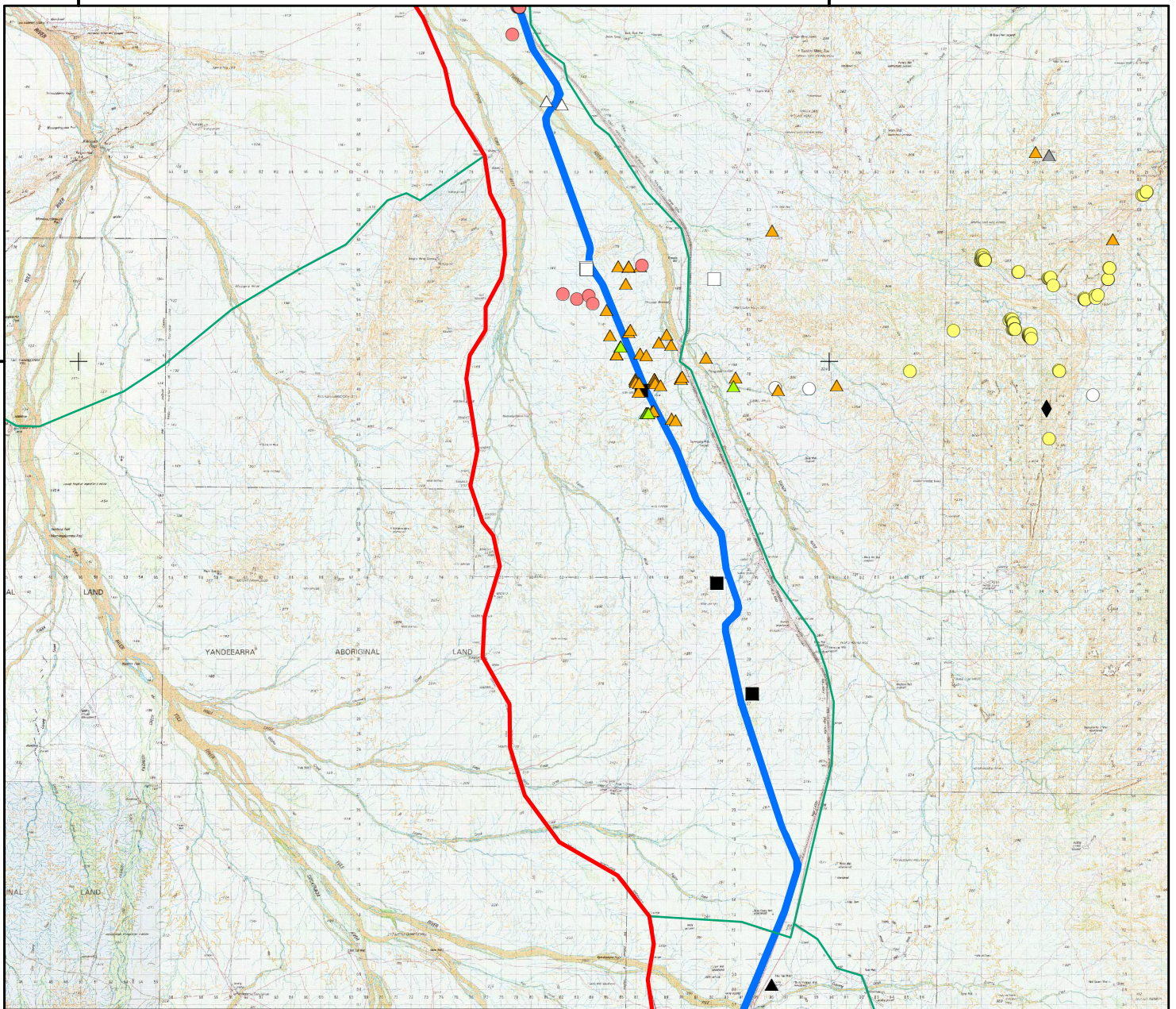


**Priority Flora Species
Recorded During Reviewed
Biological Surveys -
southern section**

**Figure: 7
Project ID: 1651**

**Drawn: BH
Date: 13/11/2015**

Coordinate System
Name: GDA 1994 MGA Zone 50
Projection: Transverse Mercator
Datum: GDA 1994



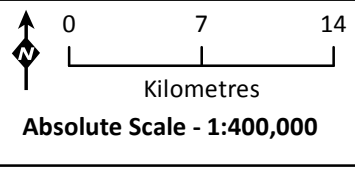
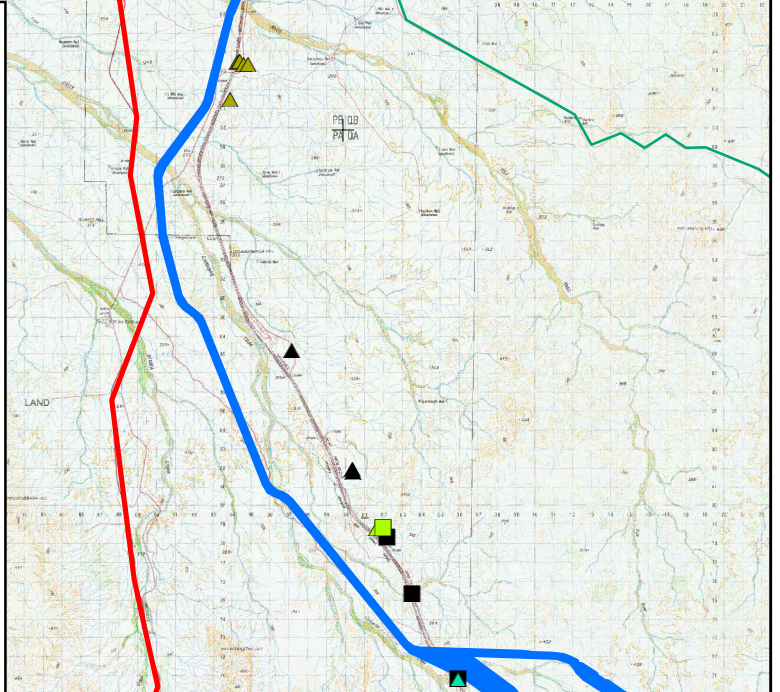
Legend

- Great Northern Hwy
- Major Roads
- BOTS Proposal Area

Priority Flora Records

Species

- *Abutilon pritzelianum* - Priority 1
- *Heliotropium muticum* - Priority 1
- *Pityrodia* sp. Marble Bar - Priority 1
- *Euphorbia clementii* - Priority 2
- *Gonocarpus ephemerus* - Priority 2
- *Stylidium weeliwoilli* - Priority 2
- △ *Abutilon trudgenii* ms. - Priority 3
- ▲ *Acacia glaucocaesia* - Priority 3
- ▲ *Bulbostylis burbidgeae* - Priority 3
- ▲ *Goodenia nuda* - Priority 3
- ▲ *Gymnanthera cunninghamii* - Priority 3
- ▲ *Sida* sp. Wittenoom (W.R. Barker 1962) - Priority 3
- ▲ *Thamesa* sp. Hamersley Station (M.E. Trudgen 11,431) - Priority 3
- ◆ *Ptilotus mollis* - Priority 4



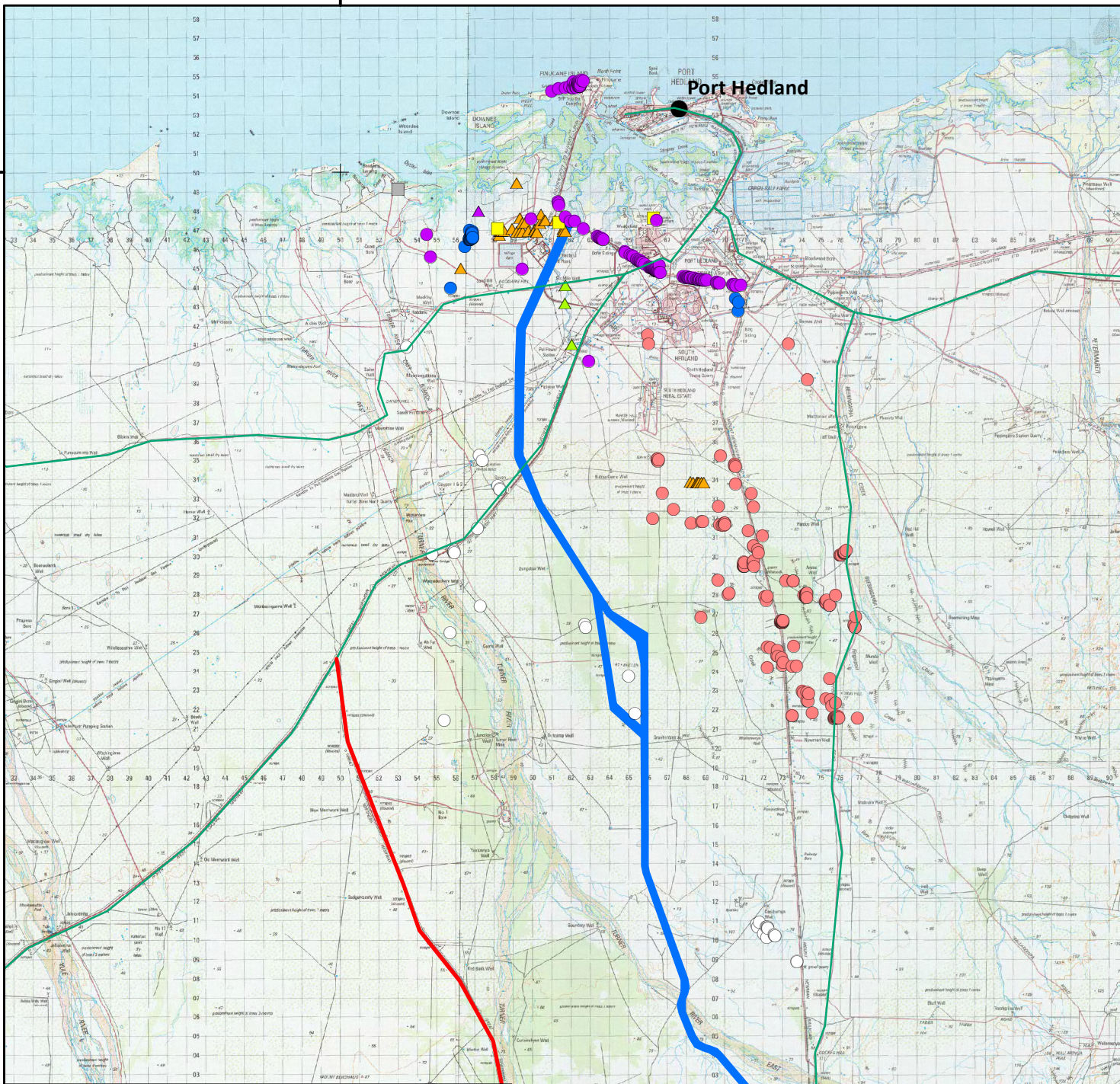
**Priority Flora Species
Recorded During Reviewed
Biological Surveys -
central section**

Figure: 8
Project ID: 1651

Coordinate System
Name: GDA 1994 MGA Zone 50
Projection: Transverse Mercator
Datum: GDA 1994

Drawn: BH
Date: 13/11/2015

A4



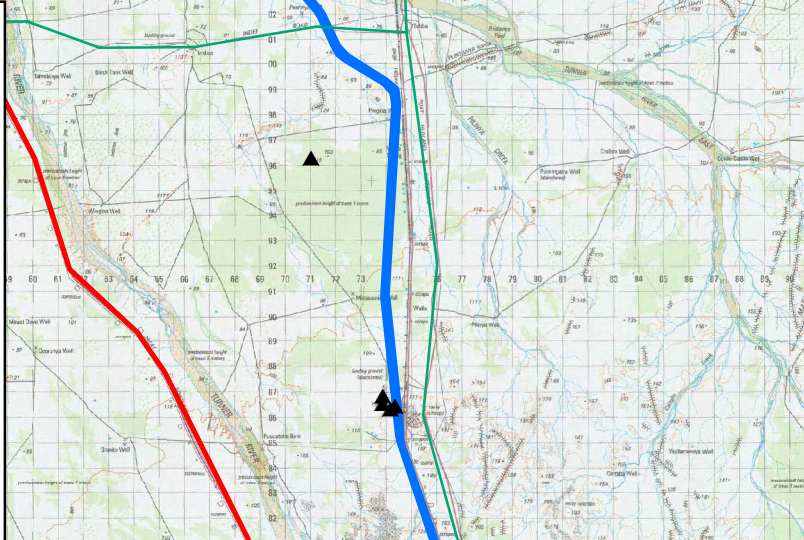
Legend

- Great Northern Hwy
- Major Roads
- BOTS Proposal Area

Priority Flora Records

Species

- *Abutilon pritzelianum* - Priority 1
- *Heliotropium muticum* - Priority 1
- *Tephrosia rosea* var. Port Hedland (A.S. George 1114) - Priority 1
- *Tephrosia rosea* var. venulosa MS - Priority 1
- Gomphrena pusilla* - Priority 2
- Pterocaulon* sp. A Kimberley Flora (M.J. Carter 599) - Priority 2
- ▲ *Bulbostylis burbidgeae* - Priority 3
- ▲ *Goodenia nuda* - Priority 3
- ▲ *Gymnanthera cunninghamii* - Priority 3
- ▲ *Pterocaulon intermedium* - Priority 3



0 5 10
Kilometres
Absolute Scale - 1:300,000



**Priority Flora Species
Recorded During Reviewed
Biological Surveys -
northern section**

Figure: 9
Project ID: 1651

Coordinate System
Name: GDA 1994 MGA Zone 50
Projection: Transverse Mercator
Datum: GDA 1994

Drawn: BH
Date: 13/11/2015

A4