

Figure 19: *Eucalyptus desmondensis* modelling results

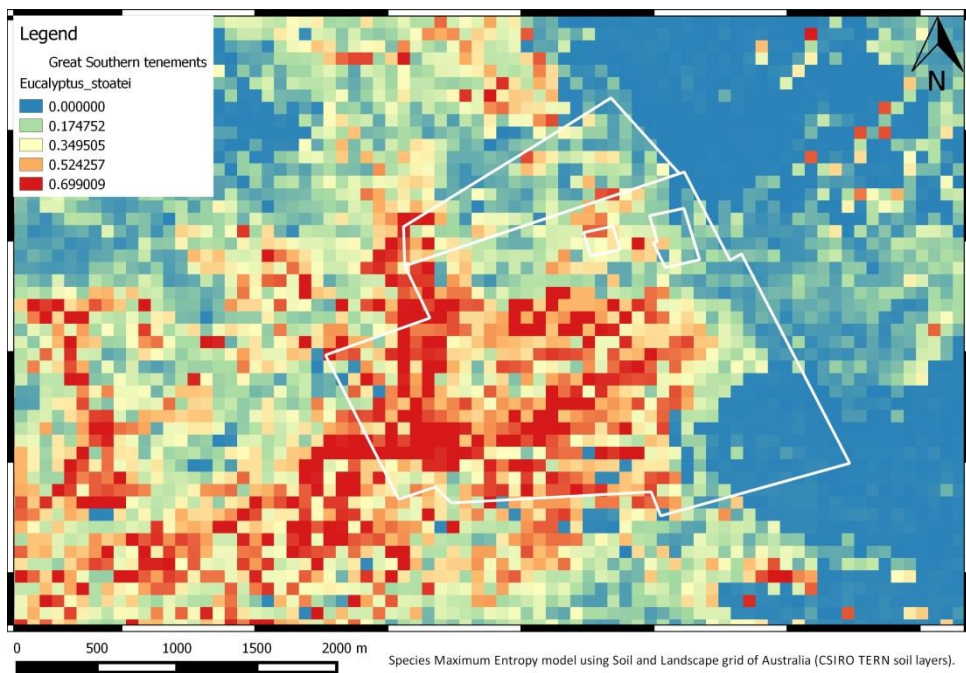
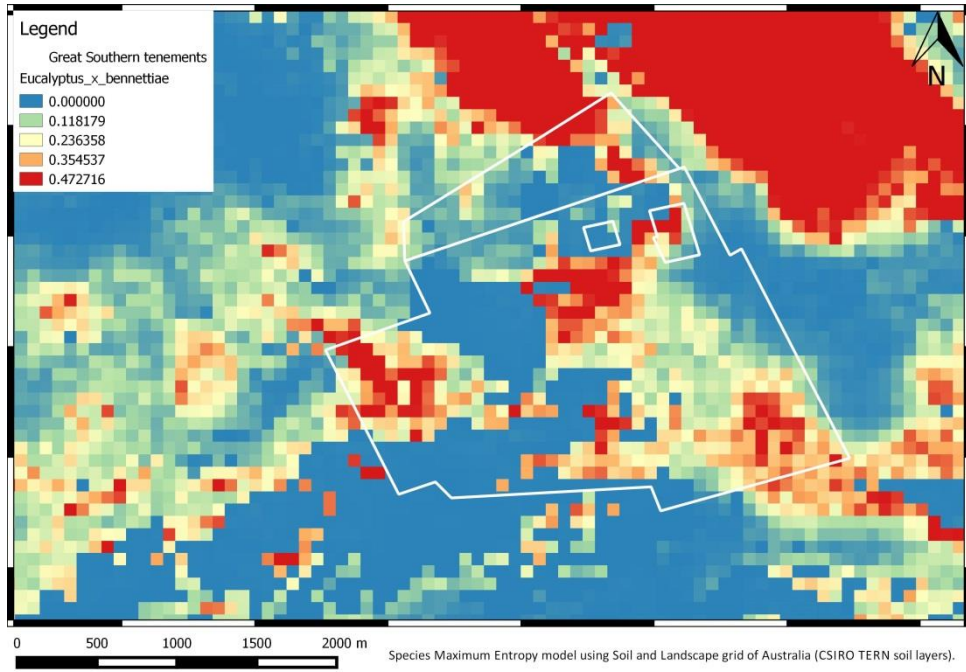
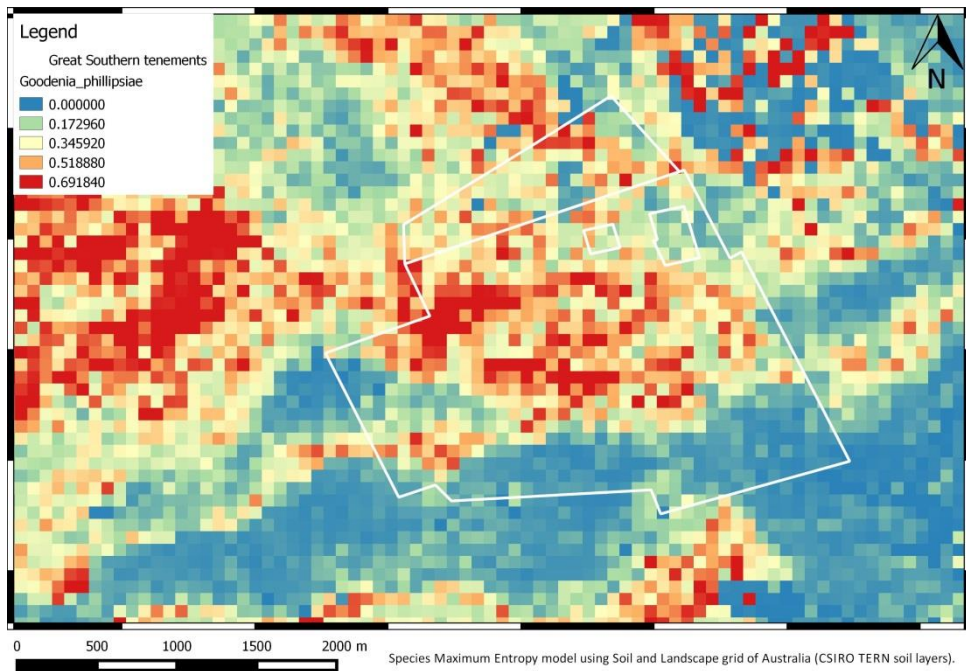


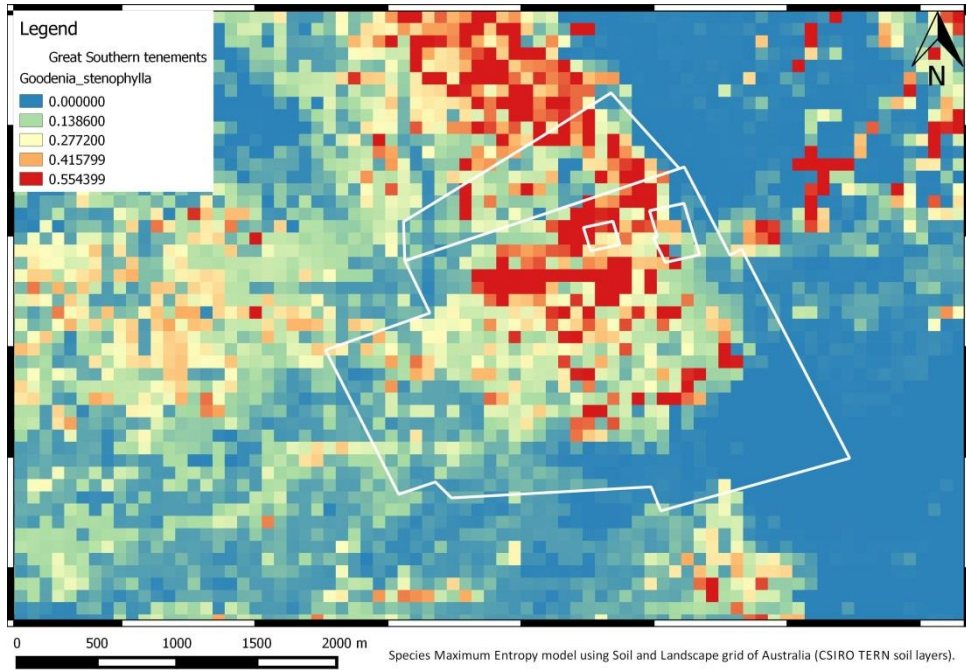
Figure 20: *Eucalyptus stoatei* modelling results



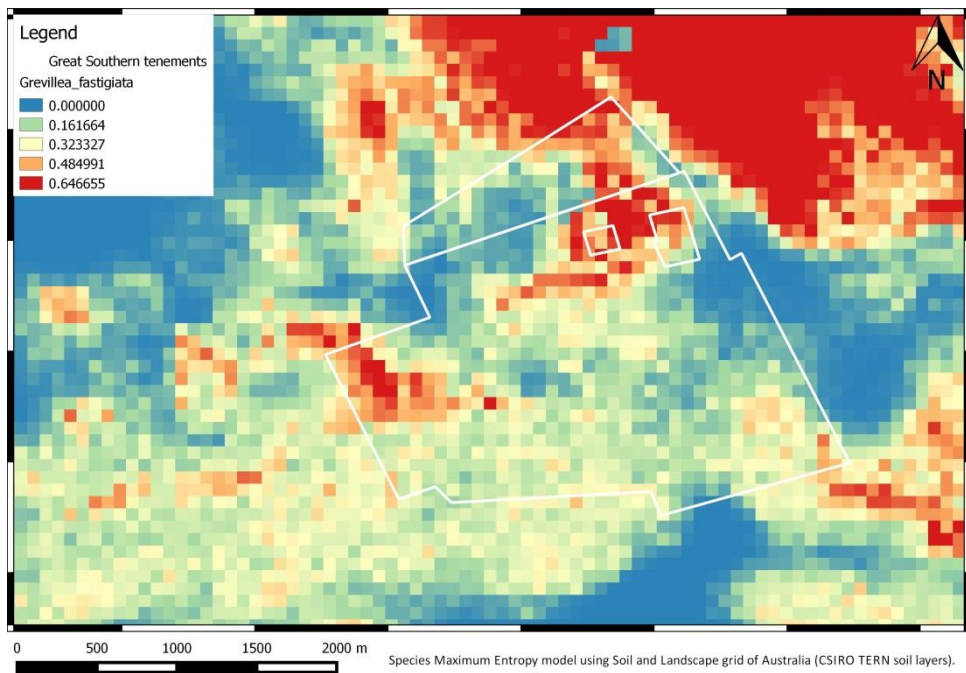
**Figure 21: Eucalyptus x bennettiae modelling results**



**Figure 22: Goodenia phillipsiae modelling results**



**Figure 23: *Goodenia stenophylla* modelling results**



**Figure 24: *Grevillea fastigiata* modelling results**

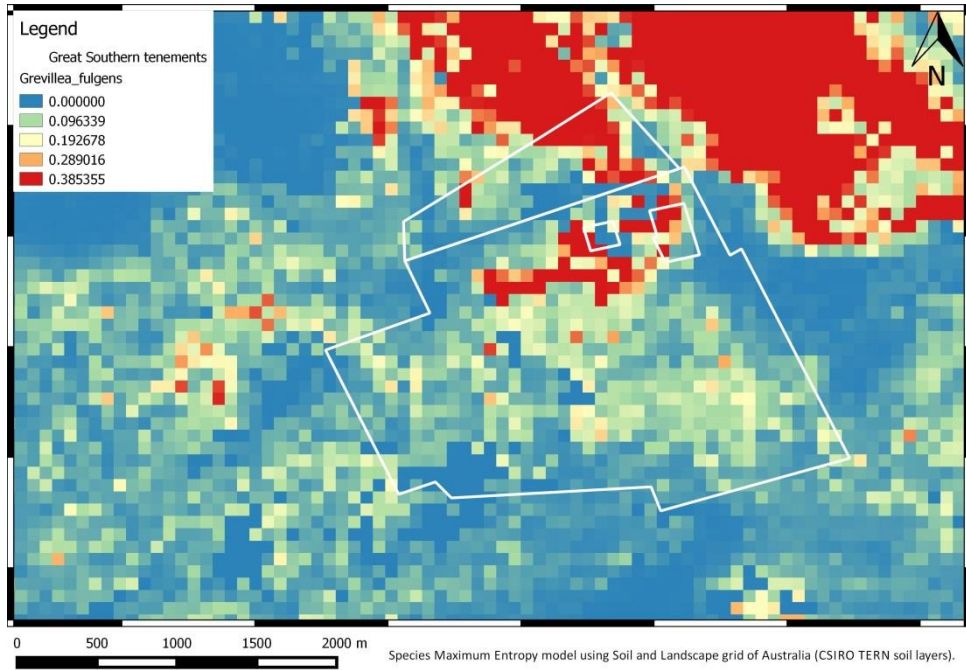


Figure 25: *Grevillea fulgens* modelling results

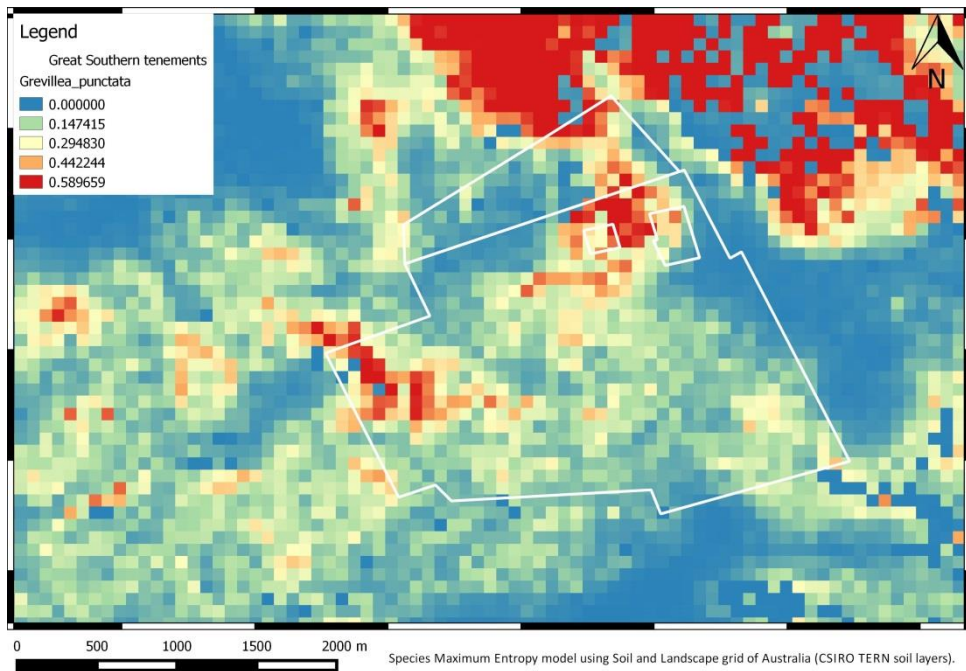
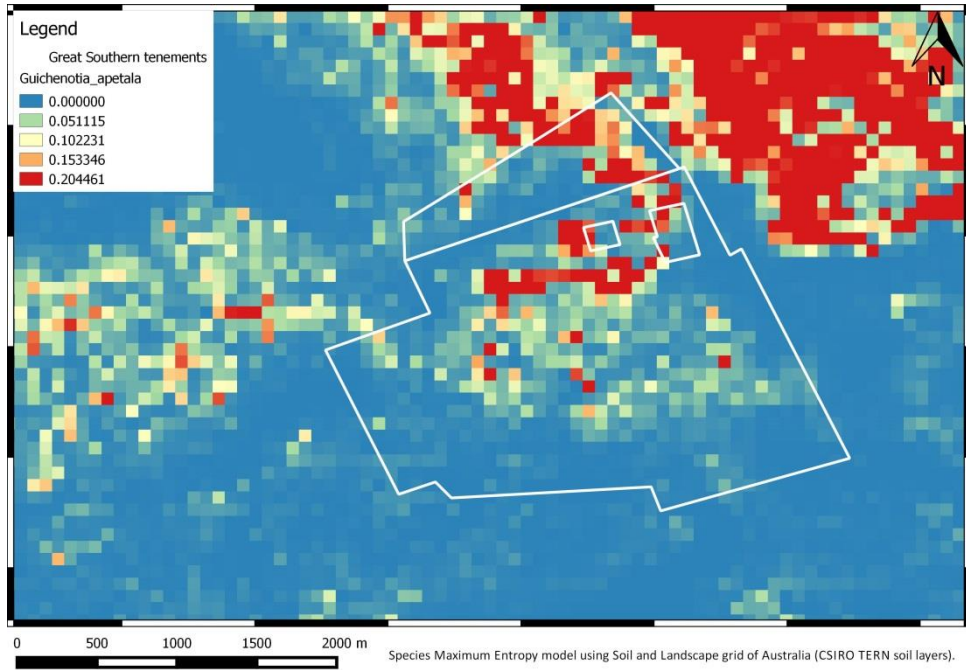
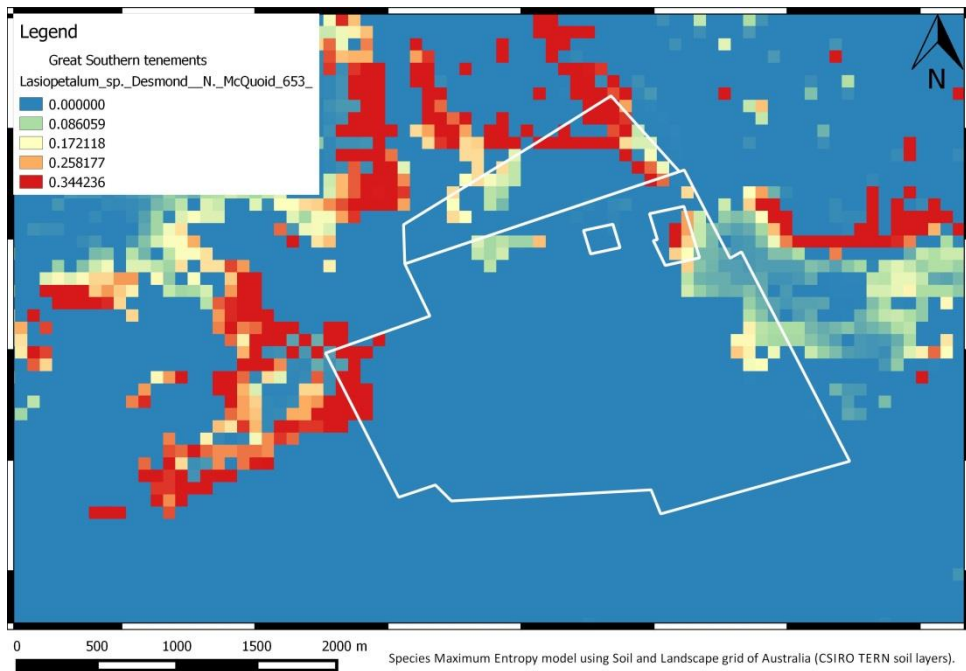


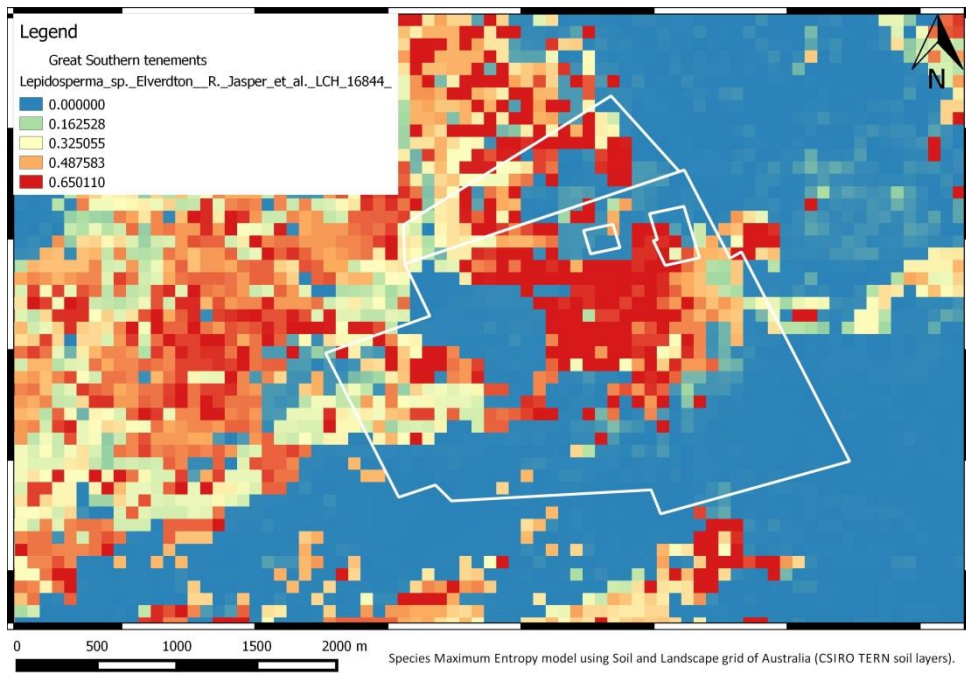
Figure 26: *Grevillea punctata* modelling results



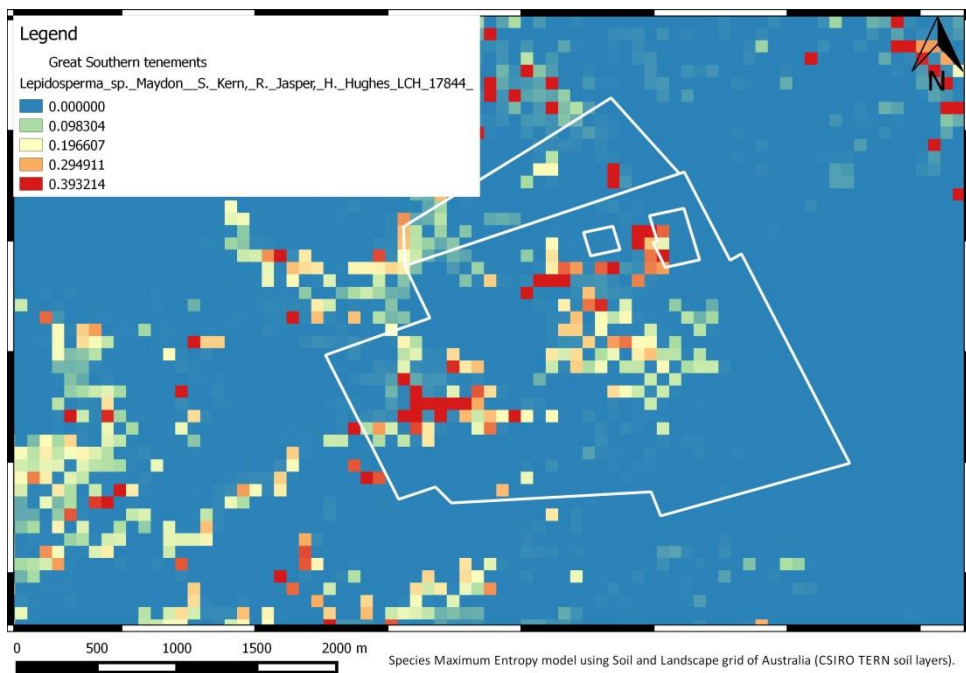
**Figure 27: *Guichenotia apetala* modelling results**



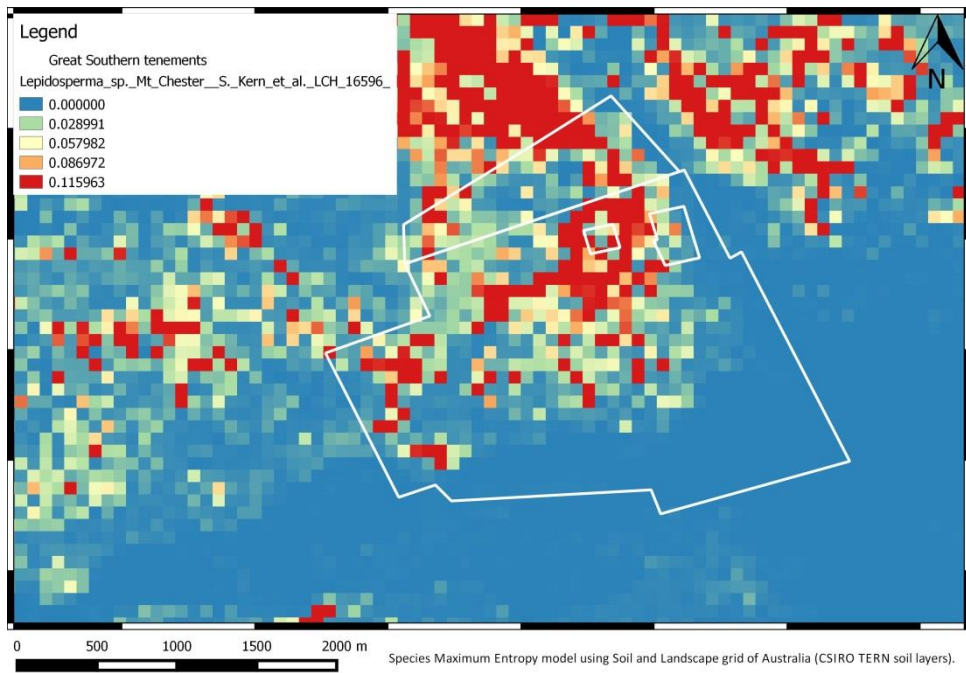
**Figure 28: *Lasiopetalum sp. Desmond* modelling results**



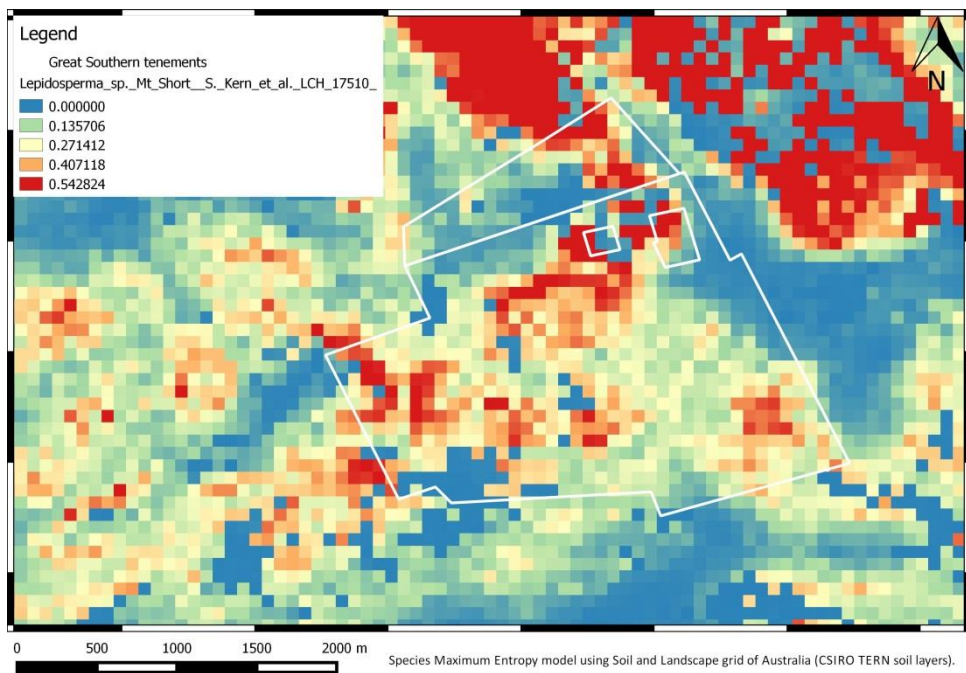
**Figure 29: Lepidosperma sp. Elverdton modelling results**



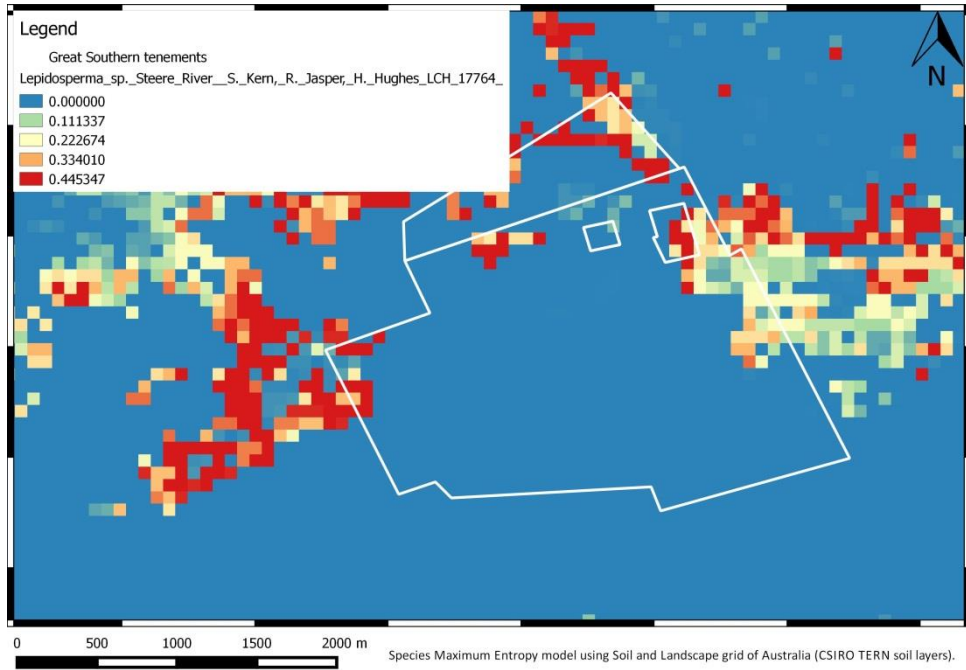
**Figure 30: Lepidosperma sp. Maydon modelling results**



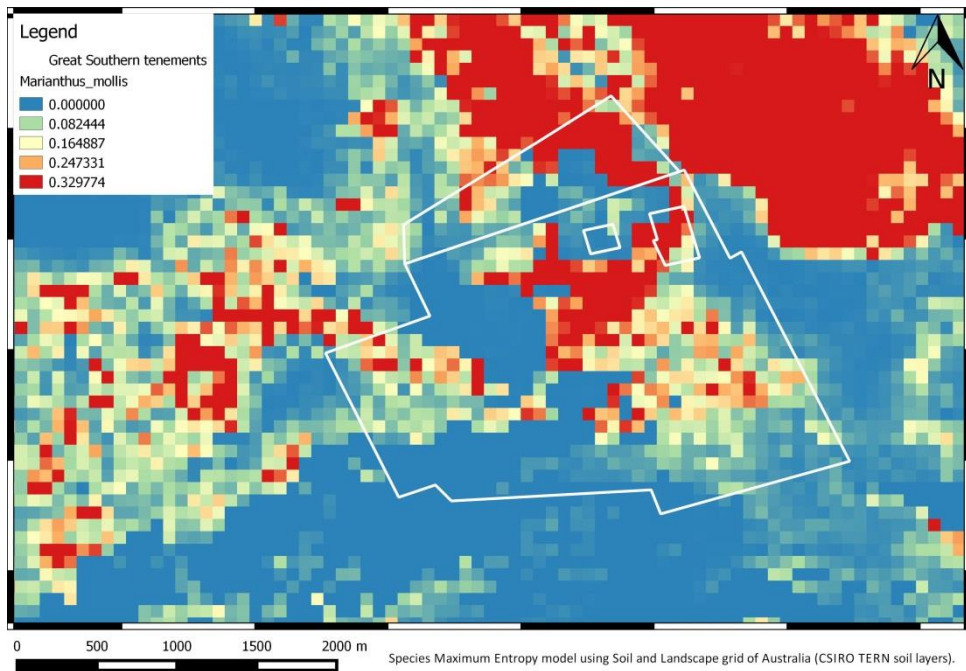
**Figure 31: *Lepidosperma* sp. Mt Chester modelling results**



**Figure 32: *Lepidosperma* sp. Mt Short modelling results**

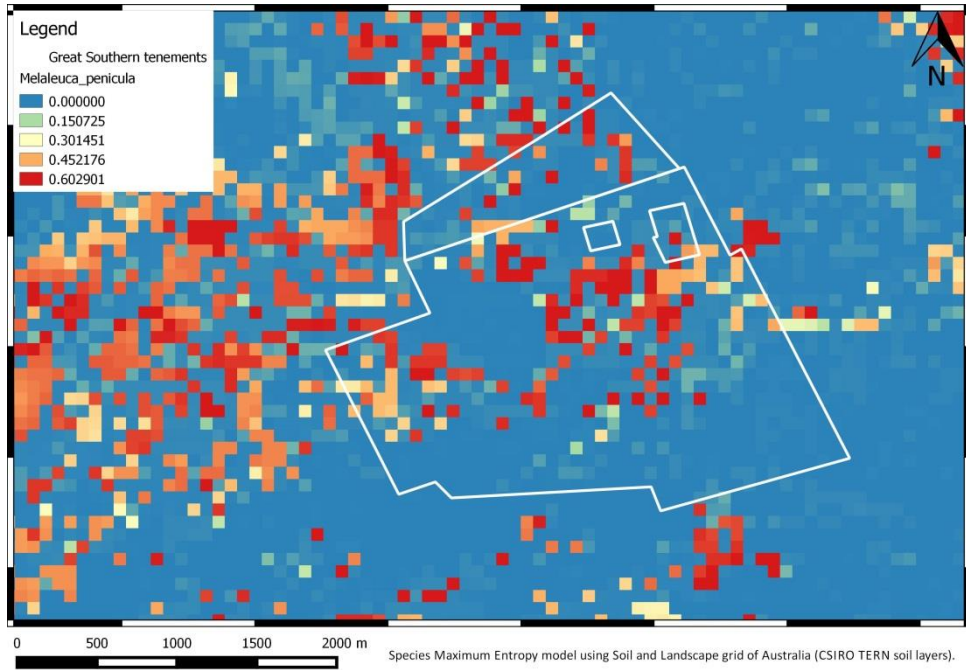


**Figure 33: Lepidosperma sp. Steere River modelling results**

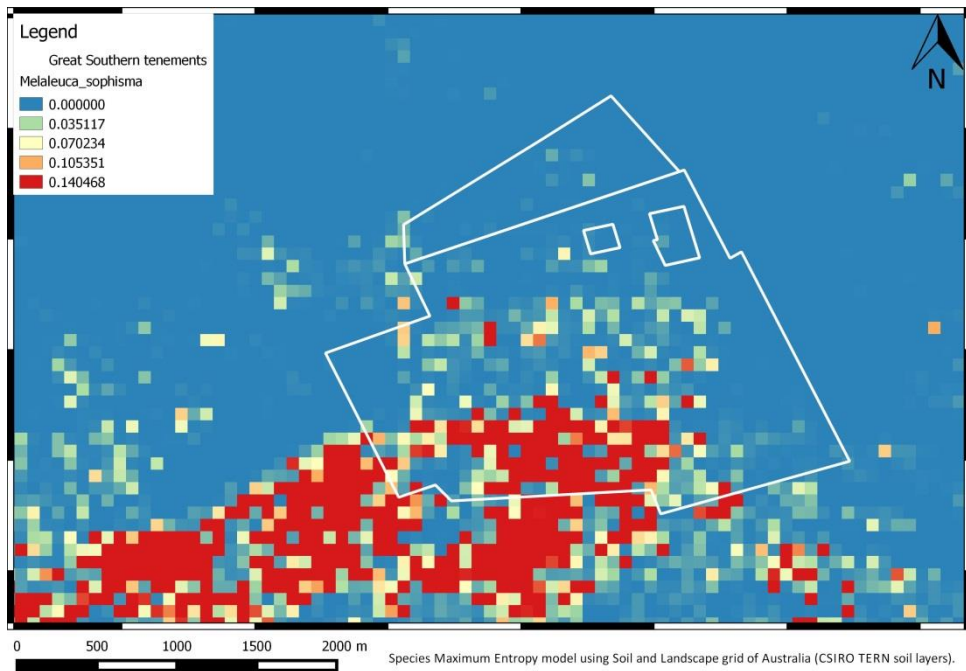


**Figure 34: Marianthus mollis modelling results**

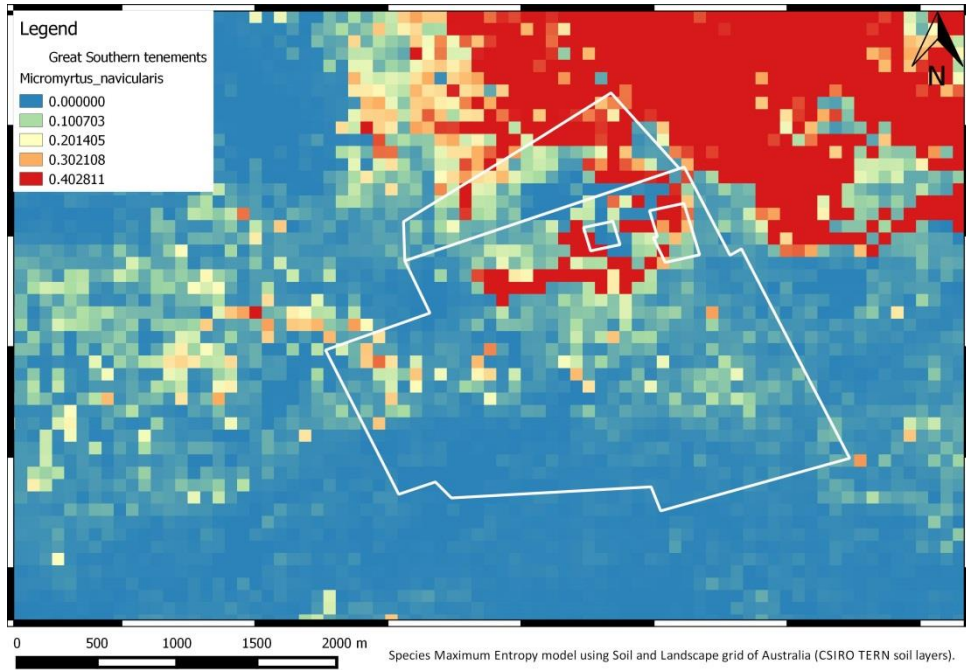




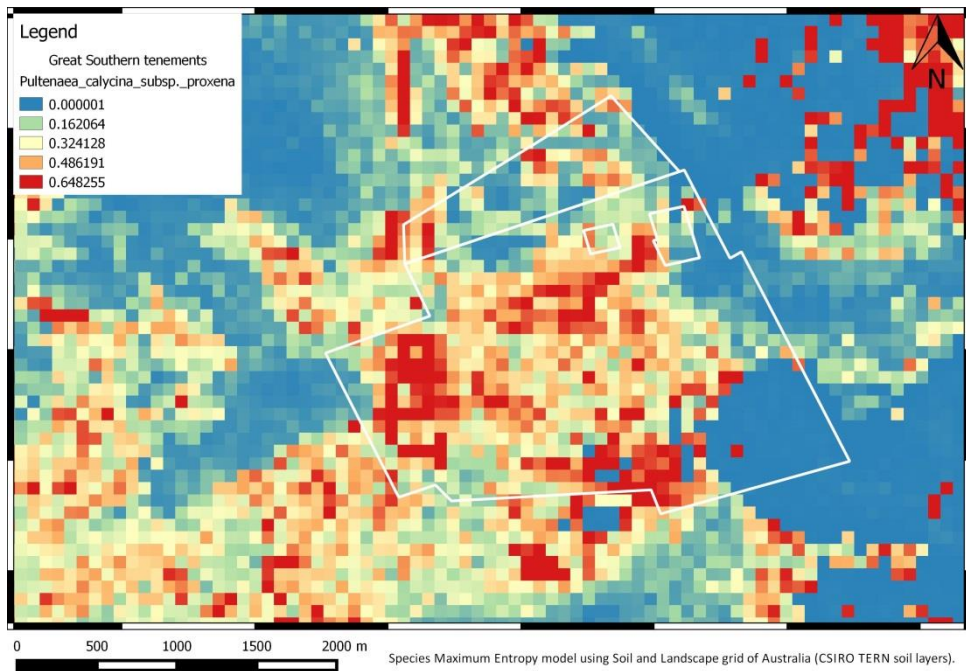
**Figure 35: Melaleuca penicula modelling results**



**Figure 36: Melaleuca sophisma modelling results**



**Figure 37: *Micromyrtus navicularis* modelling results**



**Figure 38: *Pultenaea calycina* subsp. *proxena* modelling results**

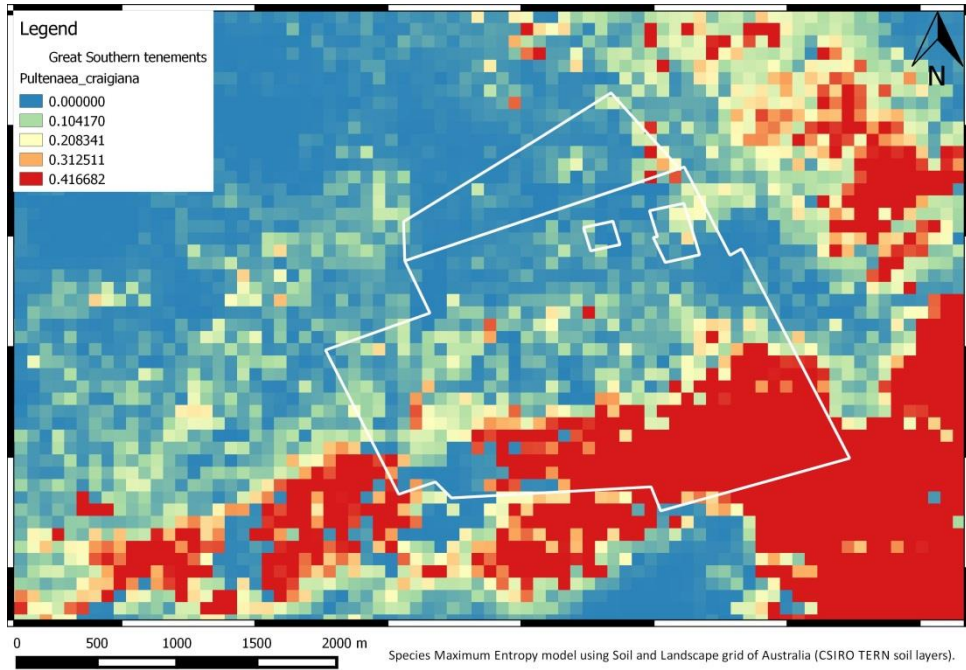


Figure 39: *Pultenaea craigiana* modelling results

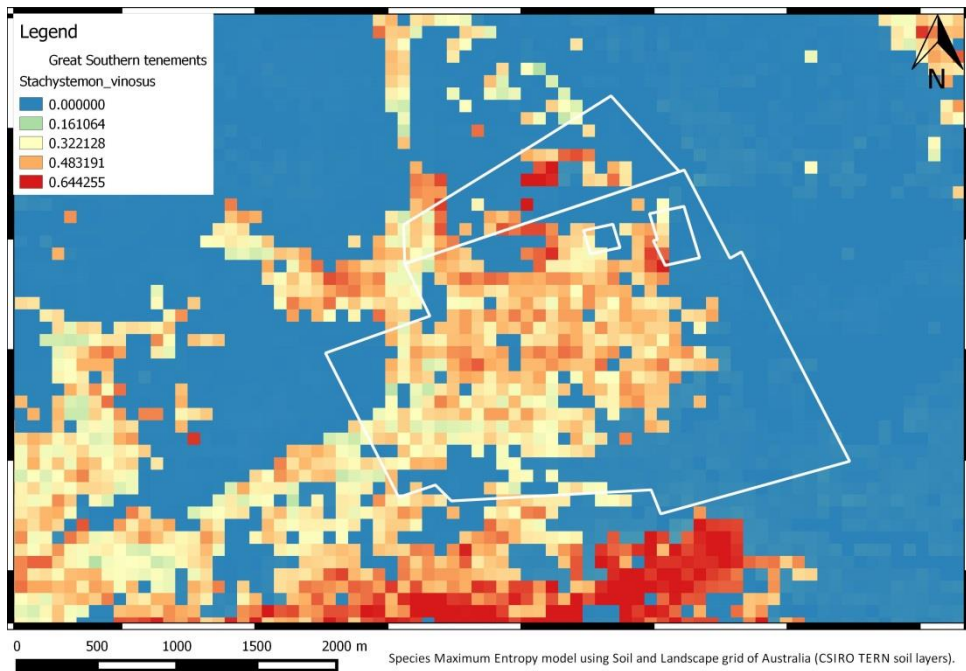
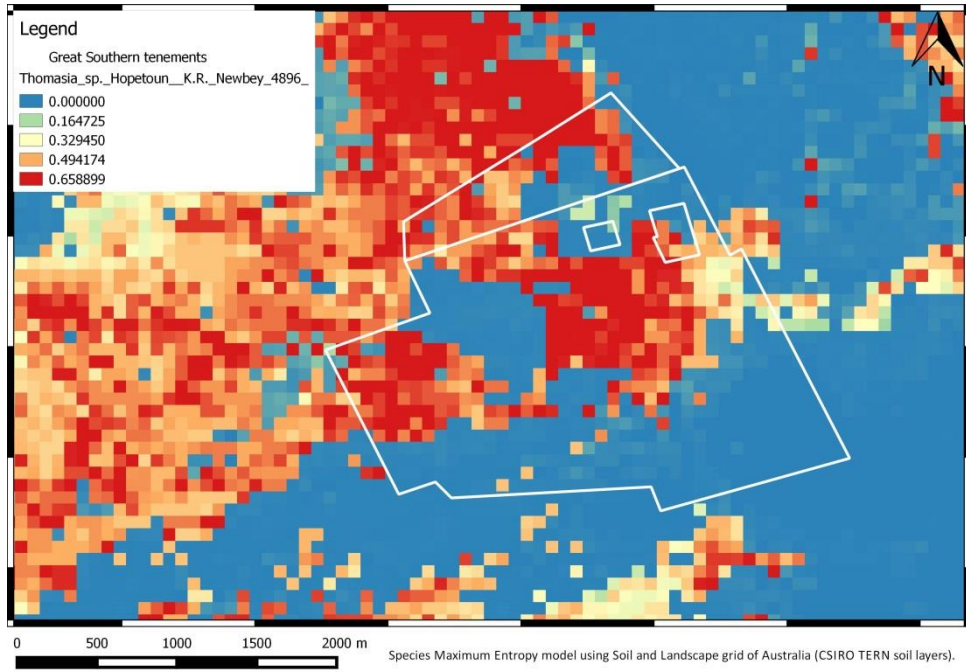
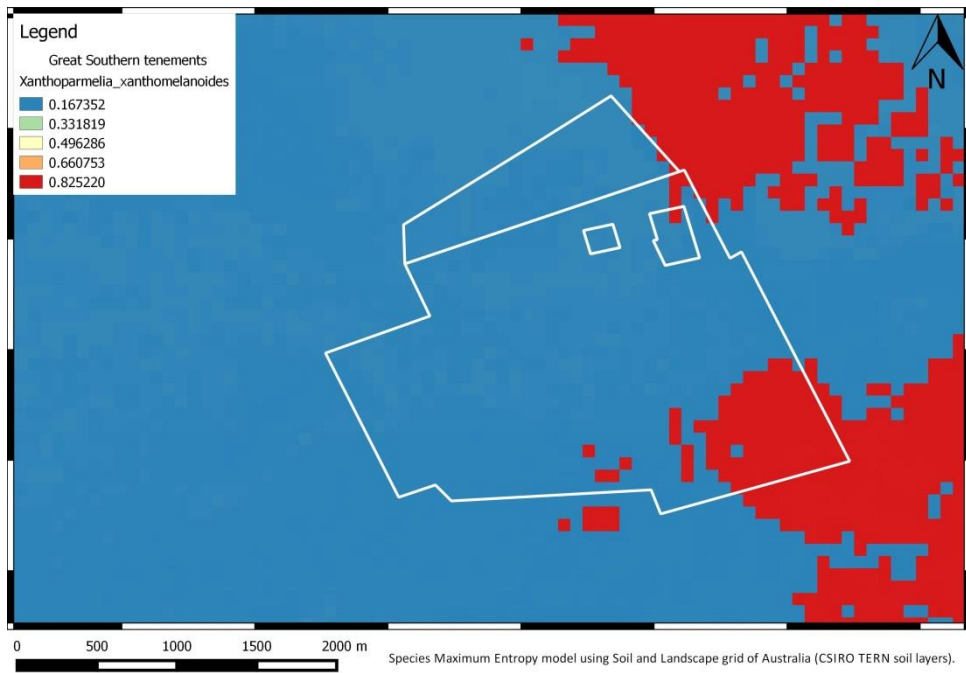


Figure 40: *Stachystemon vinosus* modelling results



**Figure 41: Thomasia sp. Hopetoun modelling results**



**Figure 42: Xanthoparmelia xanthomelanoides modelling results**

## **APPENDIX 12: LOCATION OF CONSERVATION SIGNIFICANT FLORA IN THE PROJECT AREA**

## LOCATION OF CONSERVATION SIGNIFICANT FLORA IN THE PROJECT AREA (UTM, ZONE 51)

Species Name	Latitude	Longitude	Conservation Status	Notes
Hydrocotyle sp. Decipiens	-33.671694	120.196194	P2	
Hydrocotyle sp. Decipiens	-33.671694	120.196194	P2	
Hydrocotyle sp. Decipiens	-33.671333	120.197111	P2	
Marianthus mollis	-33.6662	120.1987	P4	2 in 5m radius
Marianthus mollis	-33.666	120.1975	P4	3 in 5m radius
Marianthus mollis	-33.666	120.1969	P4	
Marianthus mollis	-33.6659	120.197	P4	
Marianthus mollis	-33.6656	120.1992	P4	
Marianthus mollis	-33.6657	120.1992	P4	
Marianthus mollis	-33.6659	120.1992	P4	5 in 5m radius
Marianthus mollis	-33.6661	120.199	P4	5 in 5m radius
Marianthus mollis	-33.6662	120.1989	P4	5 in 5m radius
Marianthus mollis	-33.6668	120.1994	P4	10 in 5m radius
Marianthus mollis	-33.6669	120.1995	P4	
Marianthus mollis	-33.667	120.1997	P4	10 in 10m radius
Marianthus mollis	-33.6672	120.1999	P4	10 in 5m radius
Marianthus mollis	-33.6675	120.1996	P4	5 plants
Marianthus mollis	-33.6677	120.2001	P4	5 in 5m radius
Marianthus mollis	-33.668	120.2008	P4	3 plants
Marianthus mollis	-33.668	120.201	P4	2 plants
Marianthus mollis	-33.6682	120.2009	P4	5 plants
Marianthus mollis	-33.6682	120.2008	P4	10 plants
Marianthus mollis	-33.6669	120.1994	P4	
Marianthus mollis	-33.6668	120.1994	P4	
Marianthus mollis	-33.6668	120.1994	P4	
Marianthus mollis	-33.6818	120.2063	P4	
Marianthus mollis	-33.6817	120.2063	P4	
Marianthus mollis	-33.6813	120.2063	P4	
Marianthus mollis	-33.6803	120.2062	P4	
Marianthus mollis	-33.6802	120.2062	P4	
Marianthus mollis	-33.6797	120.2061	P4	
Marianthus mollis	-33.6668	120.1996	P4	2 plants
Marianthus mollis	-33.6669	120.1997	P4	
Marianthus mollis	-33.6666	120.1994	P4	
Marianthus mollis	-33.6666	120.199	P4	
Marianthus mollis	-33.6665	120.199	P4	
Marianthus mollis	-33.6665	120.199	P4	
Marianthus mollis	-33.6664	120.1987	P4	
Marianthus mollis	-33.6662	120.1986	P4	
Marianthus mollis	-33.6662	120.1986	P4	
Marianthus mollis	-33.6661	120.1986	P4	

Species Name	Latitude	Longitude	Conservation Status	Notes
Marianthus mollis	-33.666	120.1986	P4	
Marianthus mollis	-33.6659	120.1982	P4	
Marianthus mollis	-33.666	120.198	P4	
Marianthus mollis	-33.6661	120.1977	P4	
Marianthus mollis	-33.666	120.1977	P4	
Marianthus mollis	-33.666	120.1976	P4	
Marianthus mollis	-33.6662	120.1969	P4	
Marianthus mollis	-33.6659	120.1967	P4	
Marianthus mollis	-33.6658	120.1967	P4	
Marianthus mollis	-33.6658	120.1967	P4	3 plants
Marianthus mollis	-33.6658	120.1971	P4	10 plants
Marianthus mollis	-33.6656	120.1971	P4	
Marianthus mollis	-33.6659	120.1975	P4	
Marianthus mollis	-33.6657	120.1993	P4	
Marianthus mollis	-33.6658	120.1993	P4	
Marianthus mollis	-33.666	120.1995	P4	
Marianthus mollis	-33.6661	120.1994	P4	
Marianthus mollis	-33.6662	120.1994	P4	
Marianthus mollis	-33.6666	120.1994	P4	2 plants
Marianthus mollis	-33.6668	120.1996	P4	2 plants
Marianthus mollis	-33.6669	120.1997	P4	2 plants
Marianthus mollis	-33.6671	120.2001	P4	
Marianthus mollis	-33.6671	120.2001	P4	
Marianthus mollis	-33.667	120.2001	P4	
Marianthus mollis	-33.6669	120.2003	P4	
Marianthus mollis	-33.6668	120.2004	P4	
Marianthus mollis	-33.6675	120.2004	P4	3 plants
Marianthus mollis	-33.6676	120.2004	P4	10 plants
Marianthus mollis	-33.6678	120.2003	P4	
Marianthus mollis	-33.6675	120.2001	P4	
Marianthus mollis	-33.6673	120.2002	P4	
Marianthus mollis	-33.6672	120.2002	P4	6 plants
Marianthus mollis	-33.6674	120.2	P4	
Marianthus mollis	-33.6678	120.2005	P4	disturbance
Marianthus mollis	-33.6677	120.2005	P4	
Marianthus mollis	-33.6677	120.2005	P4	
Marianthus mollis	-33.6676	120.2009	P4	Vegetation type Mstr, Eple
Marianthus mollis	-33.6677	120.2007	P4	5 juvenile plants
Marianthus mollis	-33.668	120.201	P4	
Marianthus mollis	-33.6679	120.2011	P4	
Marianthus mollis	-33.6679	120.2013	P4	
Marianthus mollis	-33.6681	120.2015	P4	2 juvenile plants
Marianthus mollis	-33.6686	120.2019	P4	2 plants

Species Name	Latitude	Longitude	Conservation Status	Notes
Marianthus mollis	-33.6654	120.1999	P4	
Marianthus mollis	-33.6654	120.1998	P4	
Marianthus mollis	-33.6654	120.1998	P4	
Marianthus mollis	-33.6651	120.1997	P4	
Marianthus mollis	-33.6651	120.1995	P4	
Marianthus mollis	-33.6658	120.1984	P4	
Marianthus mollis	-33.6658	120.1982	P4	
Marianthus mollis	-33.6657	120.1981	P4	
Marianthus mollis	-33.6657	120.198	P4	
Marianthus mollis	-33.6657	120.1979	P4	
Marianthus mollis	-33.6656	120.1979	P4	
Marianthus mollis	-33.6656	120.1978	P4	
Marianthus mollis	-33.6656	120.1977	P4	
Marianthus mollis	-33.6655	120.1977	P4	