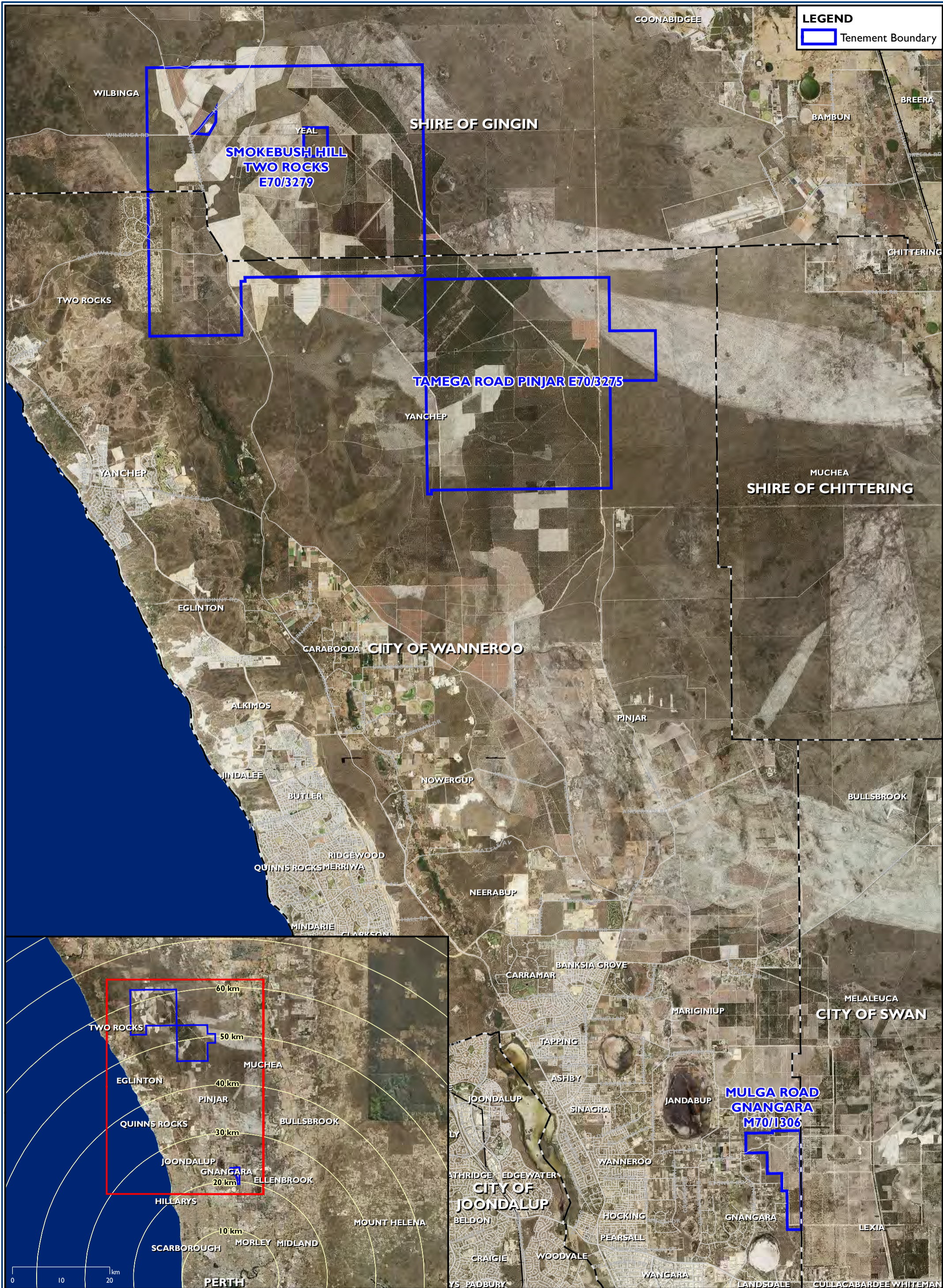


FIGURES



Job Number: L11438-EAR
 Doc Number: 001
 Date: 1108.16
 Scale: 1:115,000 @ A3
 Created by: MA
 Source: Cadastre - Landgate, 2016 Orthophoto - Landgate, Feb 2016

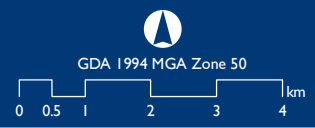
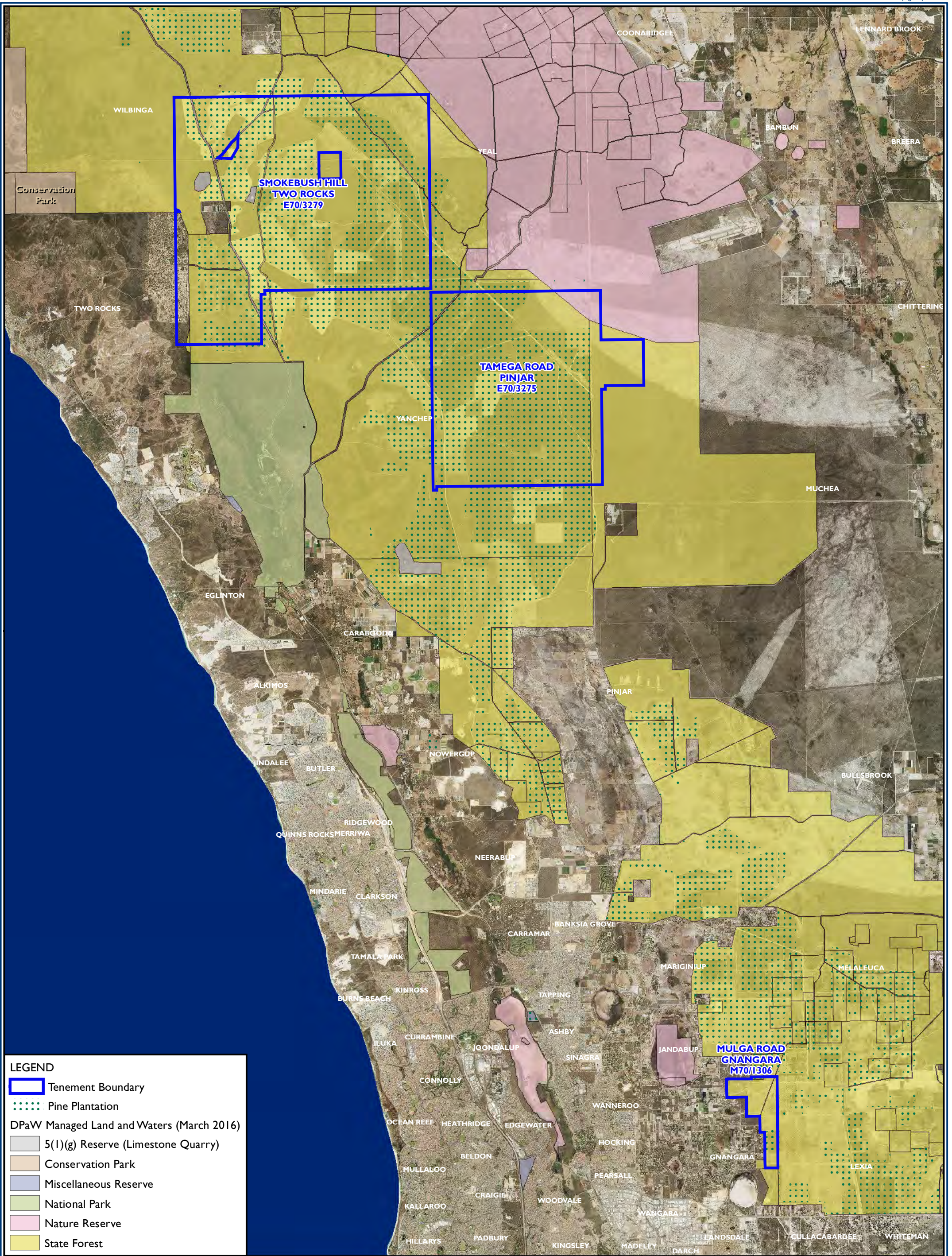


Figure 1
 Site Location



LEGEND

- Tenement Boundary
- Pine Plantation

DPaW Managed Land and Waters (March 2016)

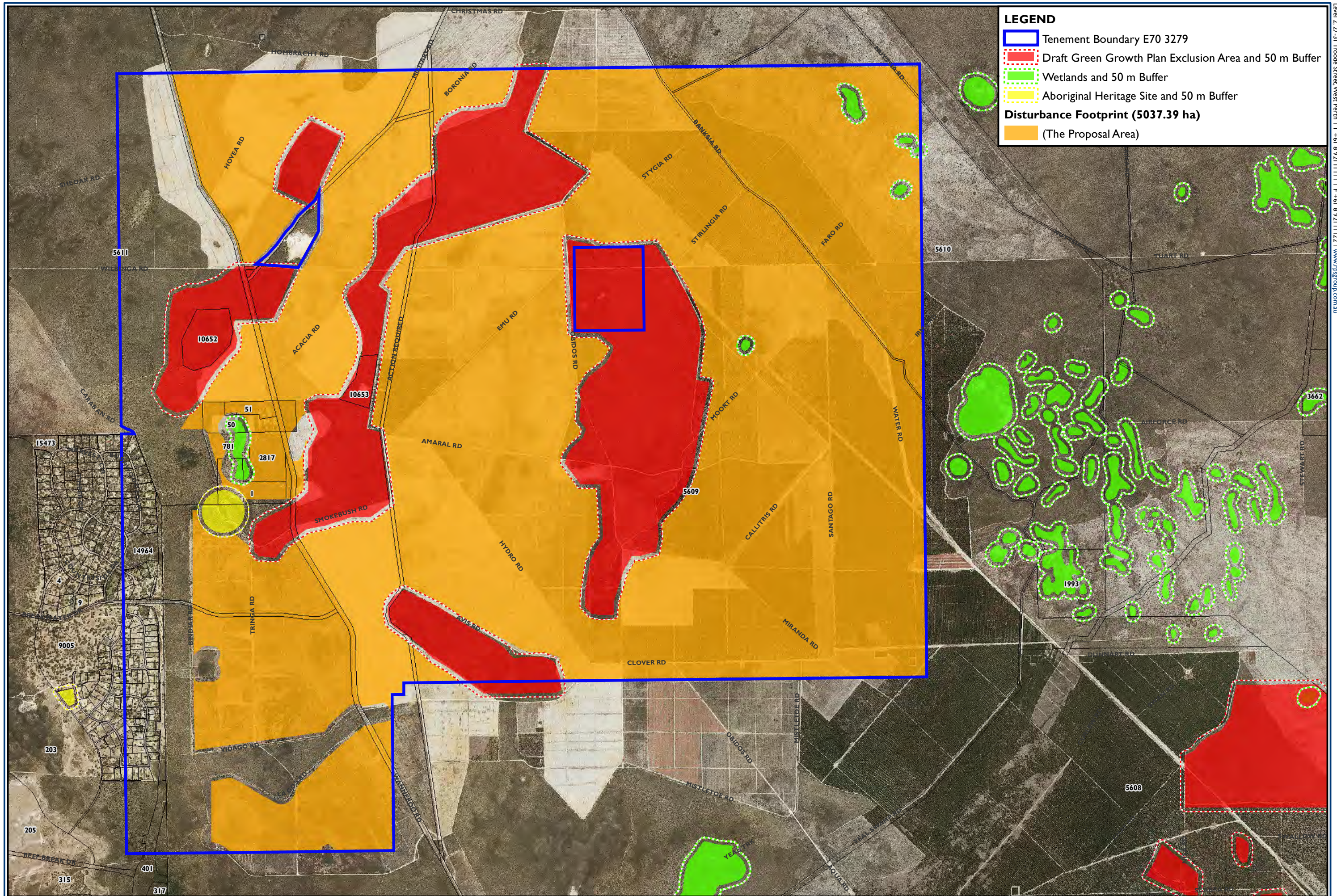
- 5(1)(g) Reserve (Limestone Quarry)
- Conservation Park
- Miscellaneous Reserve
- National Park
- Nature Reserve
- State Forest

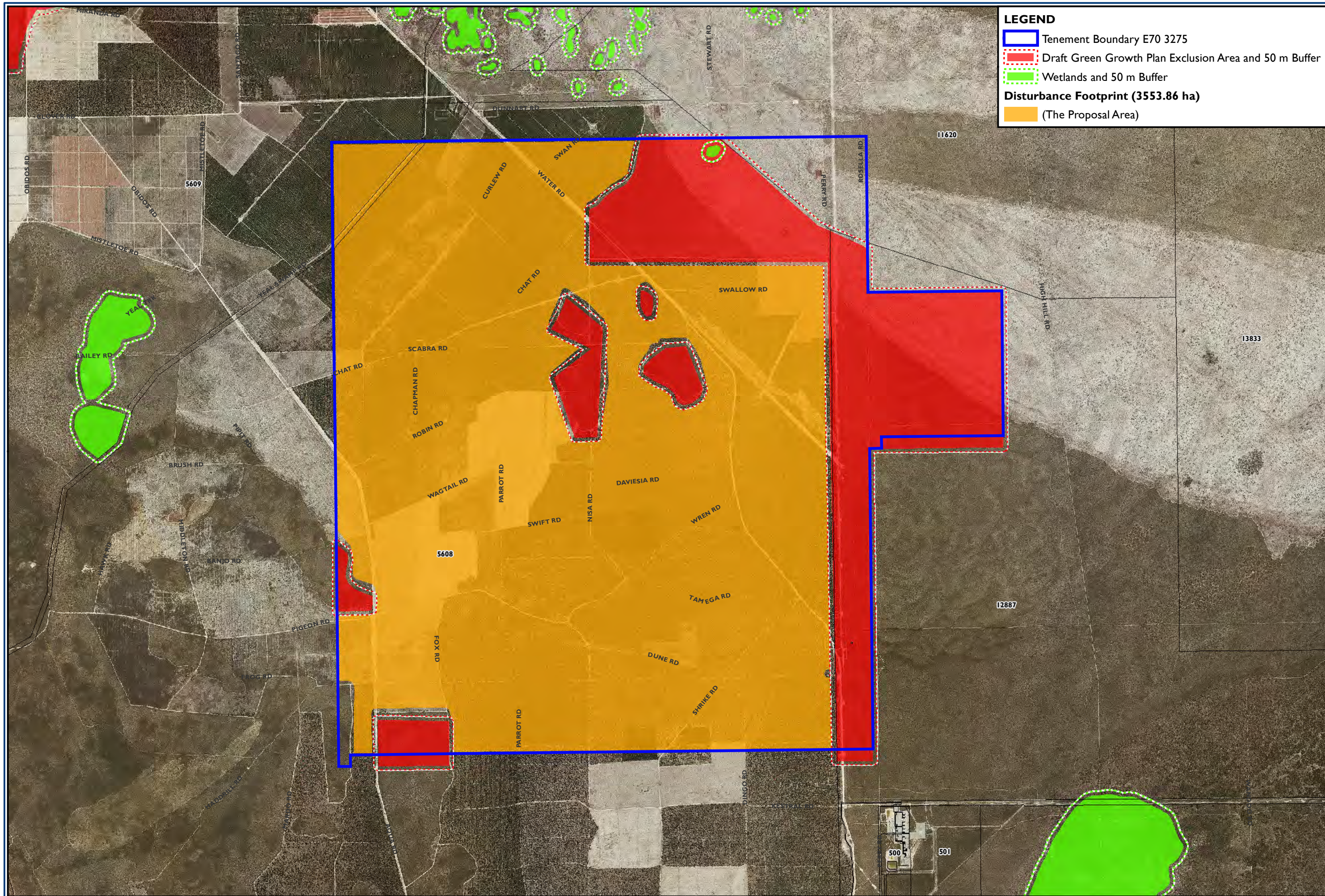
Job Number: L11438-EAR
 Doc Number: 002
 Date: 12.08.16
 Scale: 1:125000 @ A3
 Drafted by: MA
 Source: Orthophoto - Landgate WMS



Figure 2

Site Context





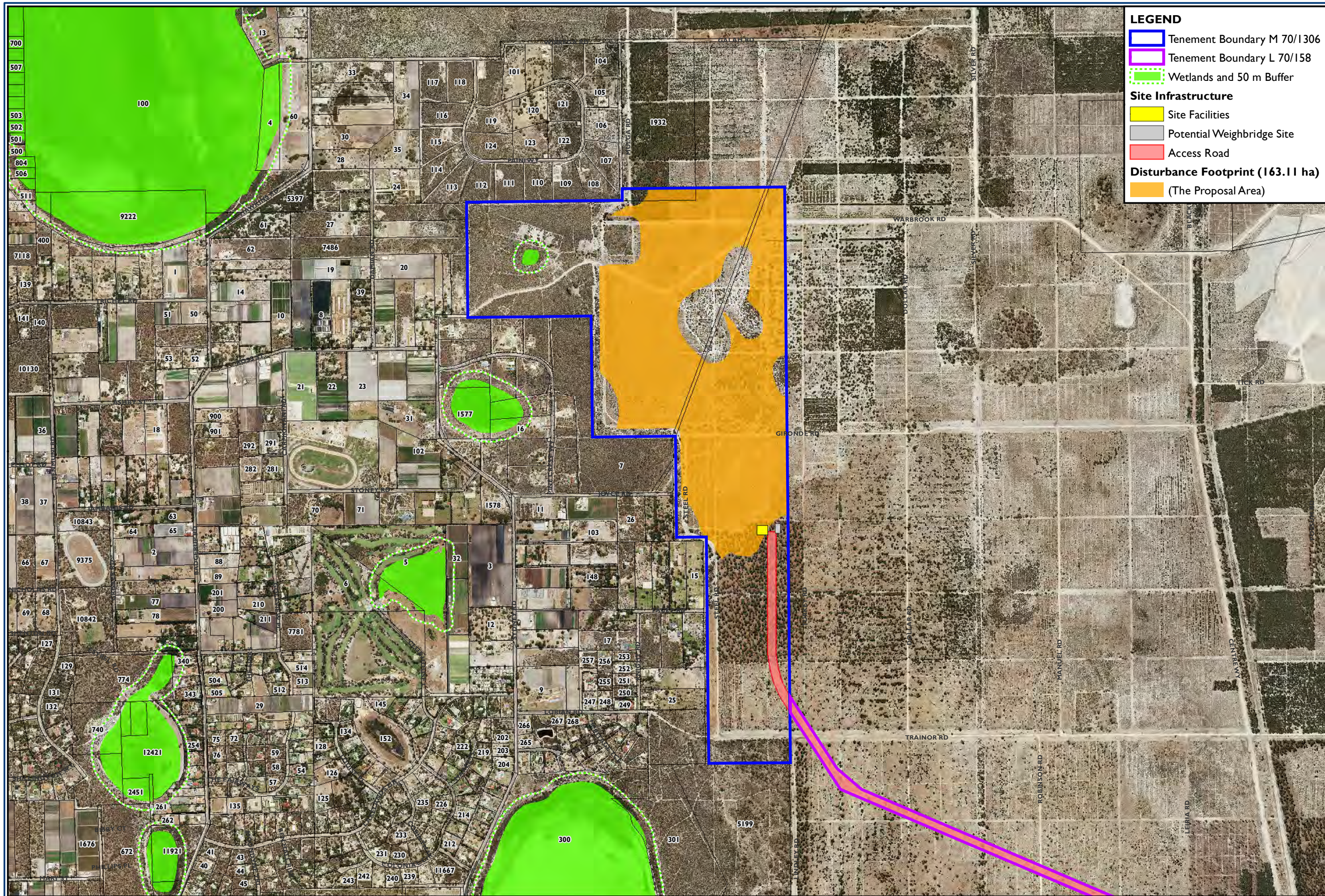
LEGEND

- Tenement Boundary E70 3275
- Draft Green Growth Plan Exclusion Area and 50 m Buffer
- Wetlands and 50 m Buffer

Disturbance Footprint (3553.86 ha)

- (The Proposal Area)

Level 2, 27-31 Troode Street, West Perth | T +61 8 9211 1111 | F +61 8 9211 1122 | www.rpsgroup.com.au



LEGEND

- Tenement Boundary M 70/1306
- Tenement Boundary L 70/158
- Wetlands and 50 m Buffer

Site Infrastructure

- Site Facilities
- Potential Weighbridge Site
- Access Road

Disturbance Footprint (163.11 ha)

- (The Proposal Area)

Level 2, 27-31 Troode Street West Perth | T +61 8 92111111 | F +61 8 92111122 | www.rpsgroup.com.au



Job Number: L11438-EAR
 Doc Number: 003c
 Date: 15.08.16
 Scale: 1:20,000 @ A3
 Drafted by: MA
 Source: Cadastre - Landgate, 2016 Orthophoto - Landgate, Feb 2016

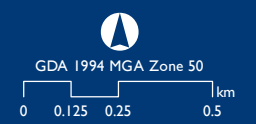






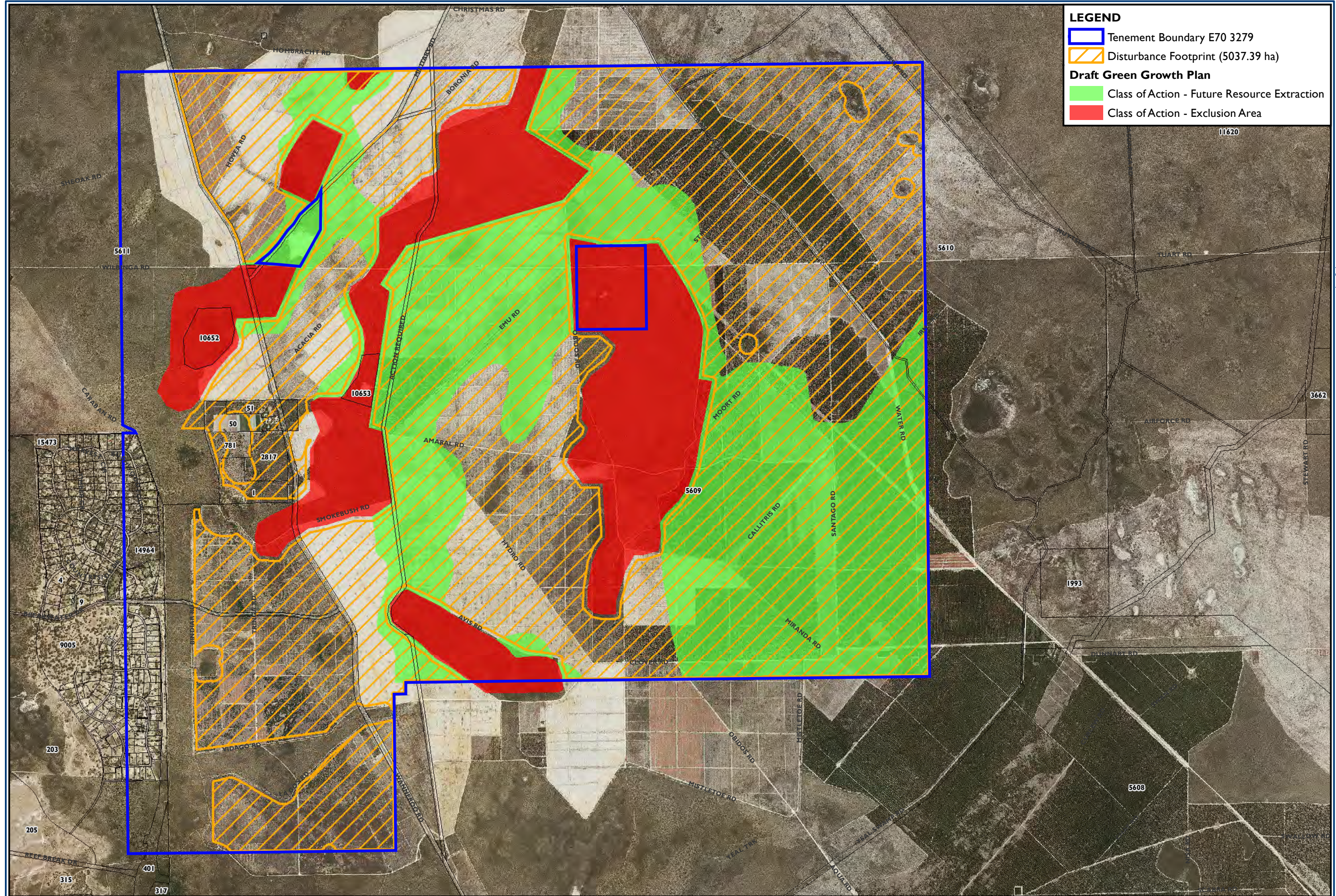
Figure 3c
Mulga Road, Gngalara M 70/1306
Proposed Excavation Area

LEGEND

-  Tenement Boundary E70 3279
-  Disturbance Footprint (5037.39 ha)

Draft Green Growth Plan

-  Class of Action - Future Resource Extraction
-  Class of Action - Exclusion Area

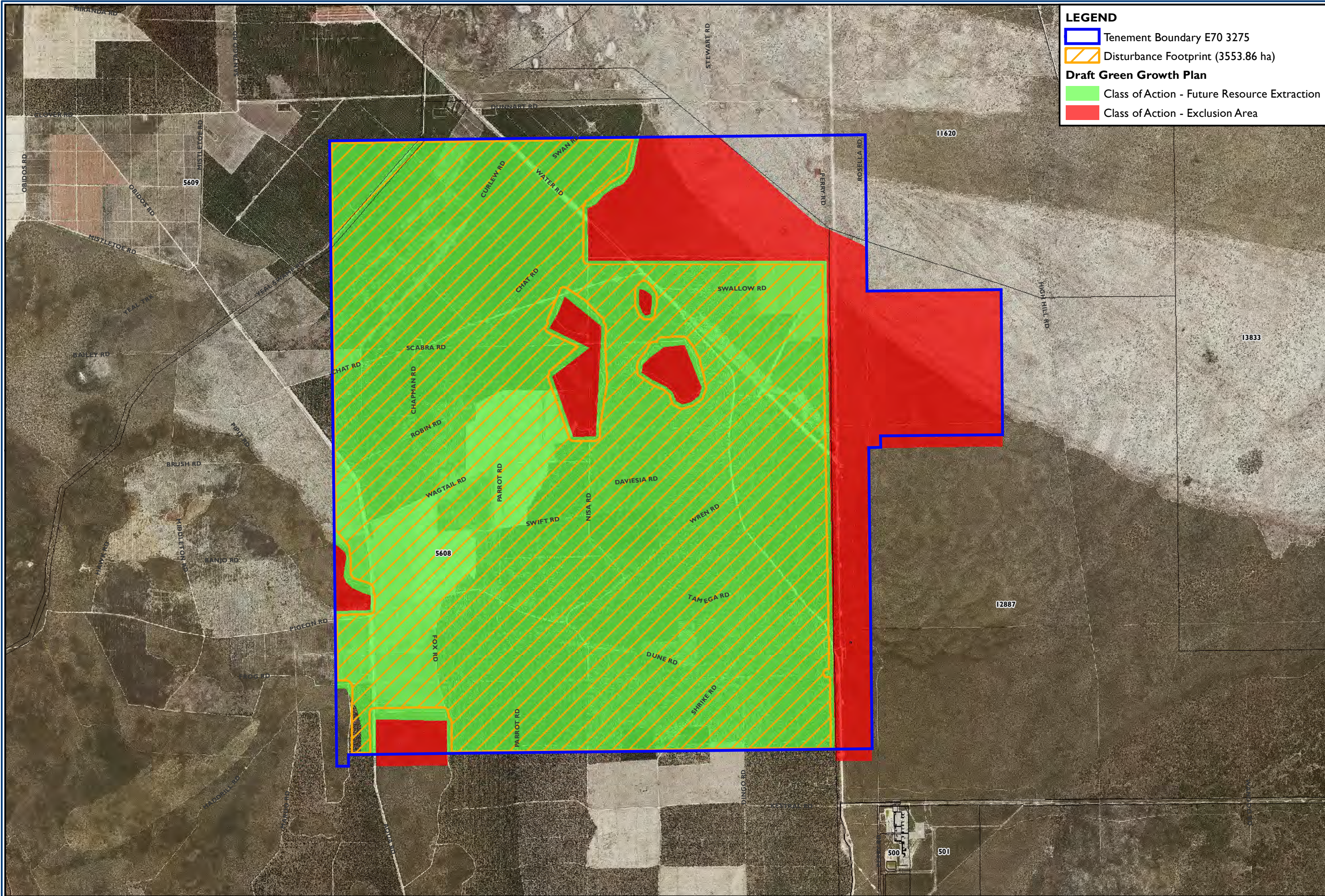


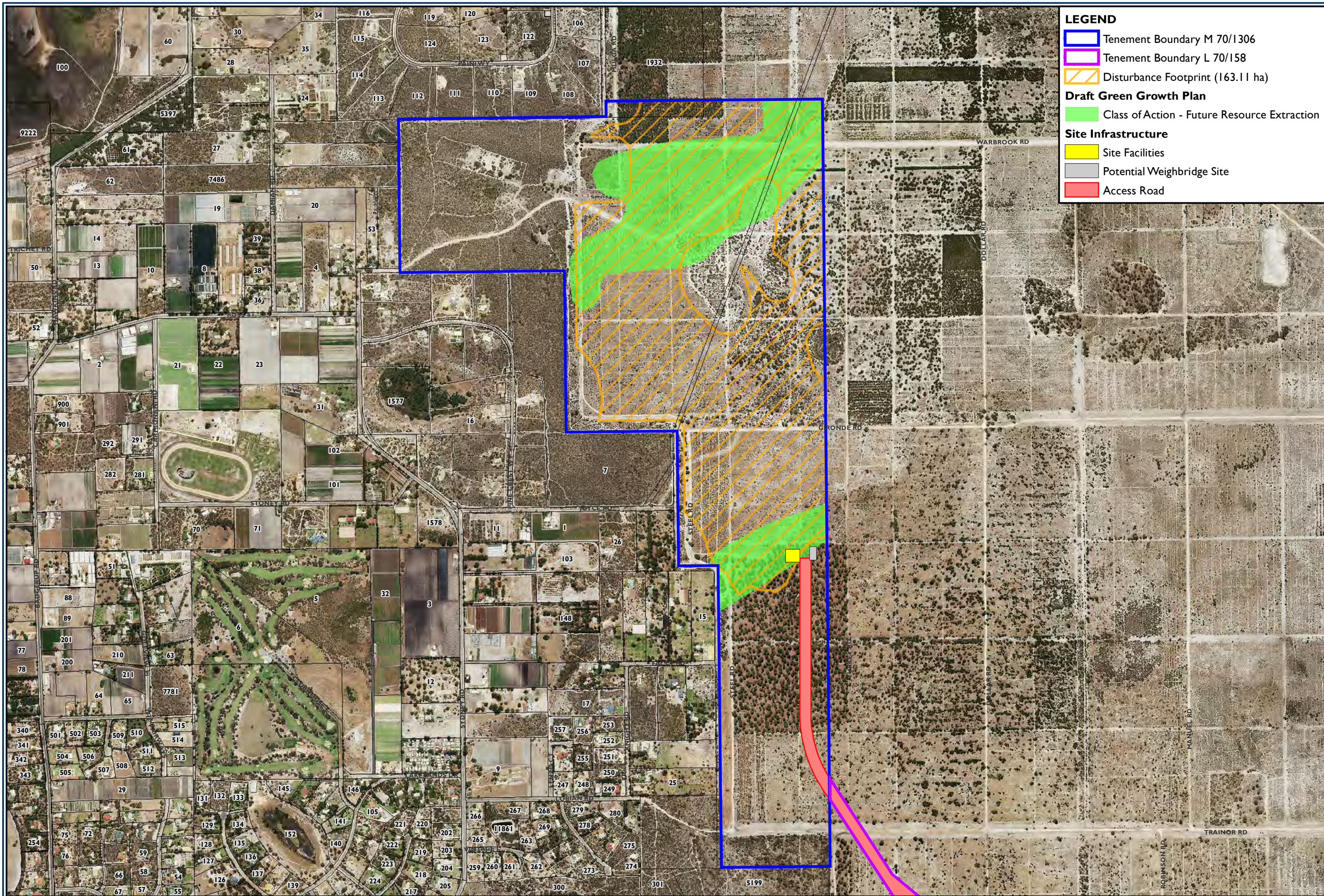
LEGEND

- Tenement Boundary E70 3275
- Disturbance Footprint (3553.86 ha)

Draft Green Growth Plan

- Class of Action - Future Resource Extraction
- Class of Action - Exclusion Area





LEGEND

- Tenement Boundary M 70/1306
- Tenement Boundary L 70/158
- Disturbance Footprint (163.11 ha)

Draft Green Growth Plan

- Class of Action - Future Resource Extraction

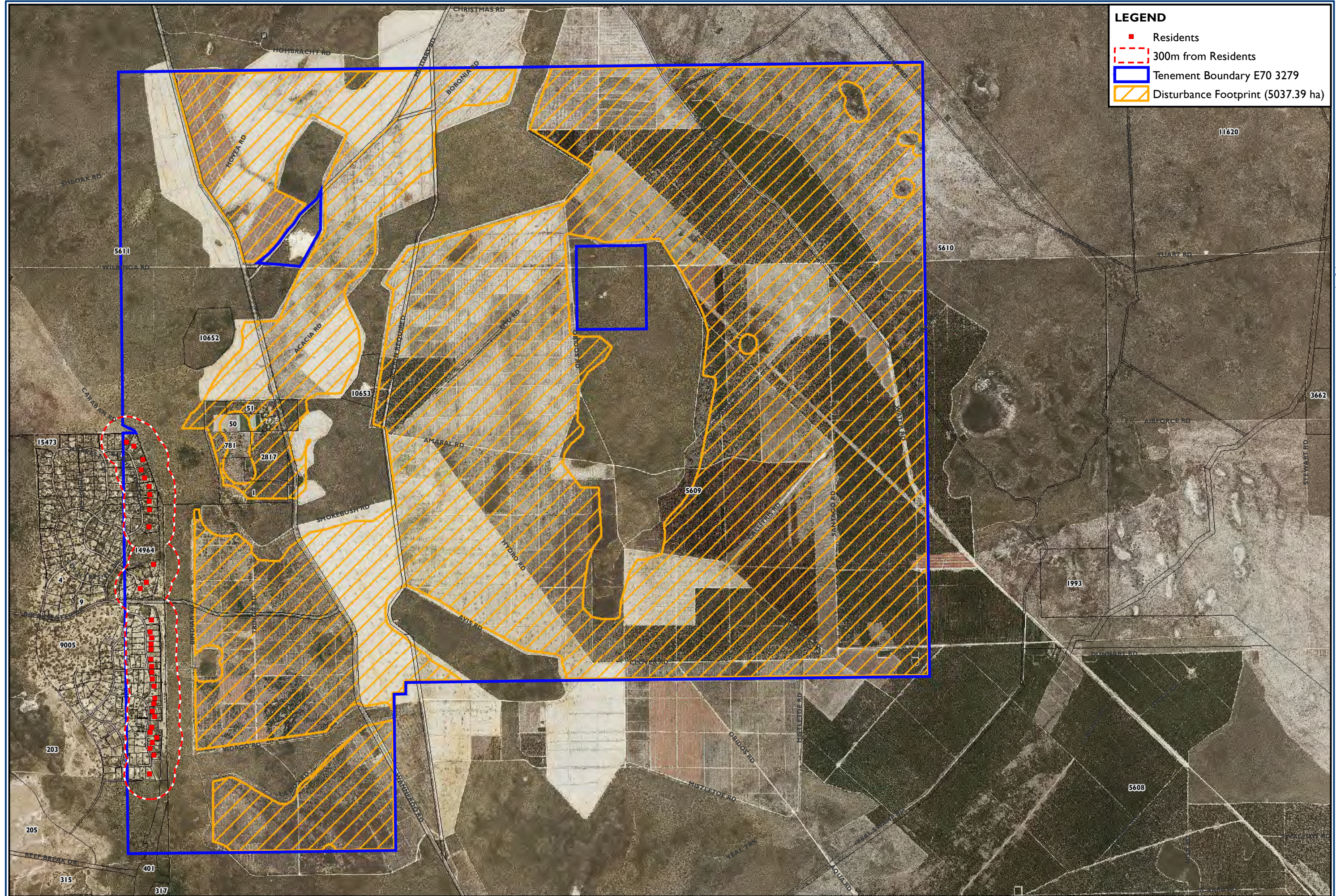
Site Infrastructure

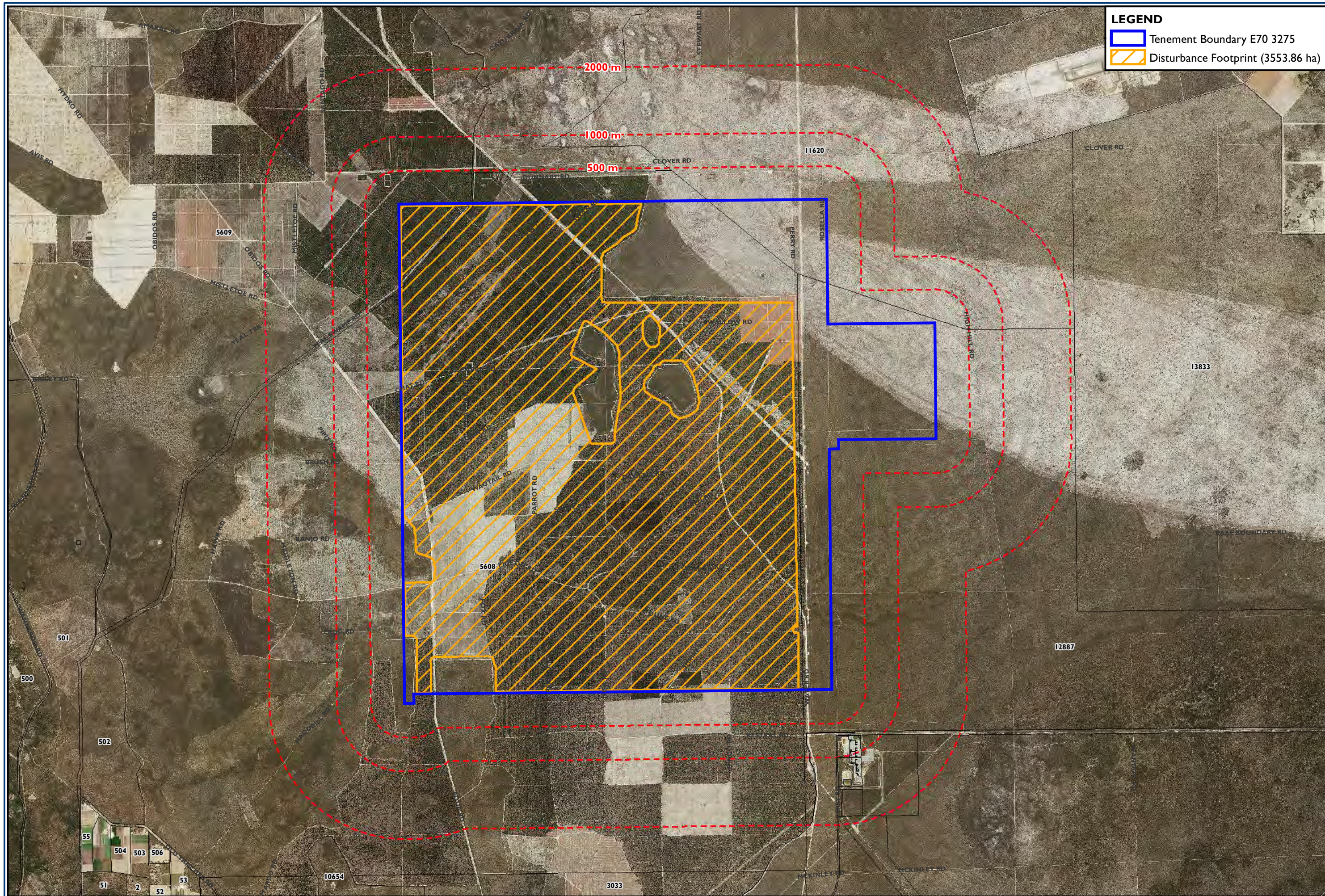
- Site Facilities
- Potential Weighbridge Site
- Access Road

Level 2, 27-31 Troode Street West Perth | T +61 8 92111111 | F +61 8 92111122 | www.rpsgroup.com.au

LEGEND

- Residents
- ⋯ 300m from Residents
- ▭ Tenement Boundary E70 3279
- ▨ Disturbance Footprint (5037.39 ha)





LEGEND

- Tenement Boundary E70 3275
- Disturbance Footprint (3553.86 ha)

Level 2, 27-31 Troode Street, West Perth | T +61 8 92111111 | F +61 8 92111122 | www.rpsgroup.com.au



Job Number: L11438-EAR
 Doc Number: 011b
 Date: 15.08.16
 Scale: 1:50,000 @ A3
 Drafted by: MA
 Source: Cadastre - Landgate, 2016 Orthophoto - Landgate, Feb 2016

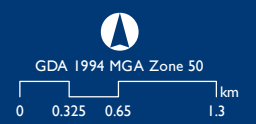
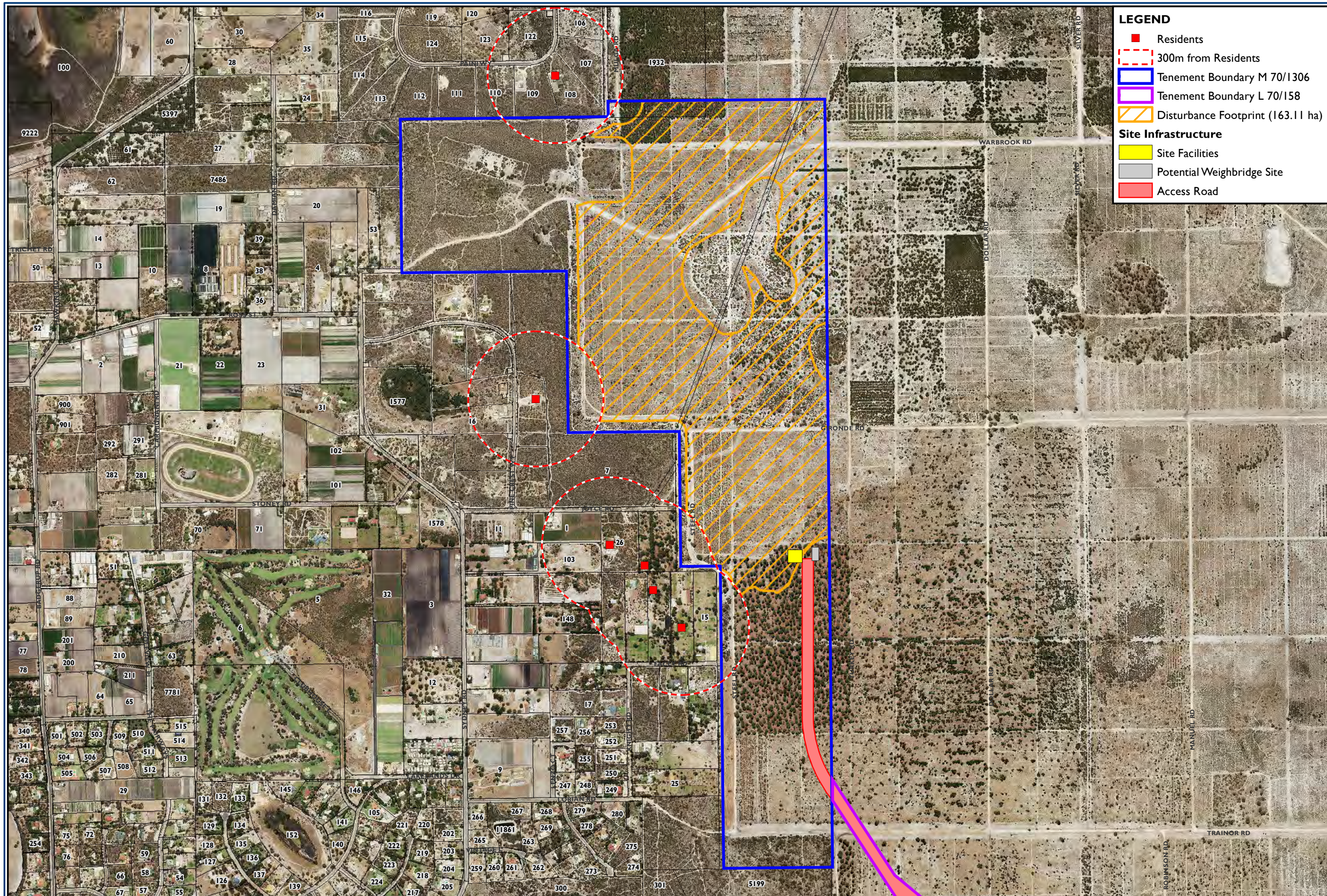


Figure 11b
Tamega Road, Pinjar E70/3275
Sensitive Receptors



LEGEND

- Residents
- 300m from Residents
- ▭ Tenement Boundary M 70/1306
- ▭ Tenement Boundary L 70/158
- ▨ Disturbance Footprint (163.11 ha)

Site Infrastructure

- Site Facilities
- ▭ Potential Weighbridge Site
- ▬ Access Road

Level 2, 27-31 Troode Street West Perth | T +61 8 9211 1111 | F +61 8 9211 1122 | www.rpsgroup.com.au



Job Number: L11438-EAR
 Doc Number: 011c
 Date: 15.08.16
 Scale: 1:15,000 @ A3
 Drafted by: MA
 Source: Cadastre - Landgate, 2016 Orthophoto - Landgate, Feb 2016

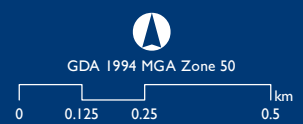


Figure 11c
Mulga Road, Gngalara M 70/1306
Sensitive Receptors