

Figures



Community

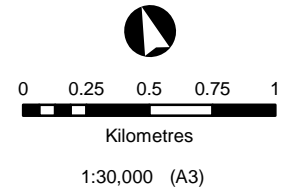
Condition

Fauna Habitat

SKA1 - Survey
Vegetation Communities,
Condition and Fauna Habitats

SKA Ecological Survey

Figure 5.1

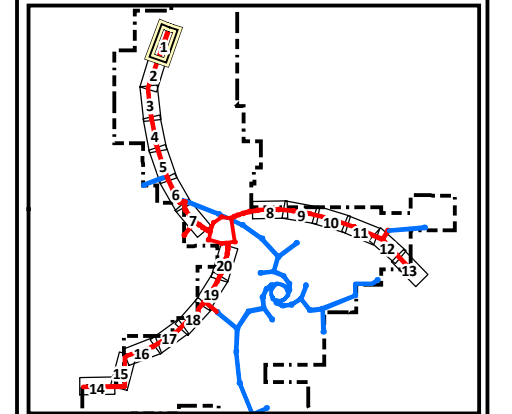


Coordinate System: GDA 1994 MGA Zone 50

- SKA1 - Low
- SKA1 - Survey
- MRO Boundary
- Boolardy Station
- Sherwood Land System
- 6 Previous Survey (Alex Holmes)

- Vegetation Communities**
- | | | |
|---|---|---|
| AfSa | AiTdPd | ArEd |
| AiAbSa | ApAgEf | ArEf |
| AaAtPs | AiAtEf | ApTh |
| AcAsTd | AiEs | ArCc |
| AfEFpo | | EvAsEb |

- Fauna Habitats**
- | | |
|---|--|
| Channels and creek line | Conservation Significant Flora |
| Granite boulders and heaps | Erosion |
| Granite domes | Observation |
| Hardpan plain with intermittent sandplain | Quadrat |
| Non saline stony or gritty surfaced plains | Trapdoor Spider |
| Rocky Breakaway and plateau edges | White-browed Babbler |
| Saline lower footslopes below breakaways | Western Spiny-tailed Skink Observations |
| Sandplain | Western Spiny-tailed Skink Habitat |
| | Good to Excellent |
| | Moderate |
| | Poor |

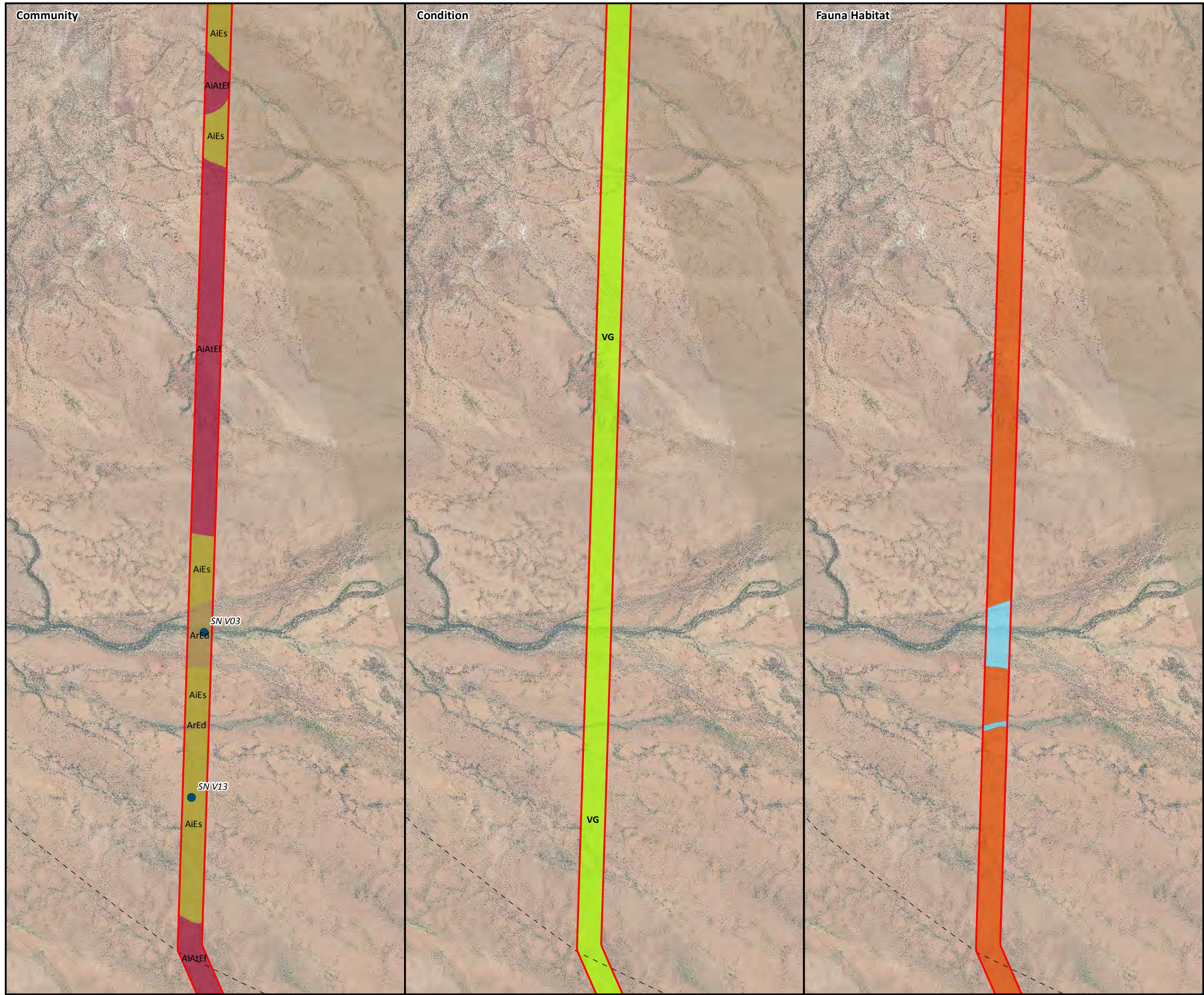


AECOM does not warrant the accuracy or completeness of information displayed in this map and any person using it does so at their own risk. AECOM shall bear no responsibility or liability for any errors, faults, defects, or omissions in the information.

© 2014 AECOM Australia Pty Ltd

Based on information provided by and with the permission of the Western Australian Land Information Authority trading as Landgate (2010).

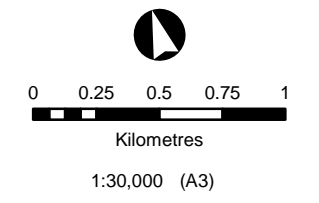




SKA1 - Survey Vegetation Communities, Condition and Fauna Habitats

SKA Ecological Survey

Figure 5.2

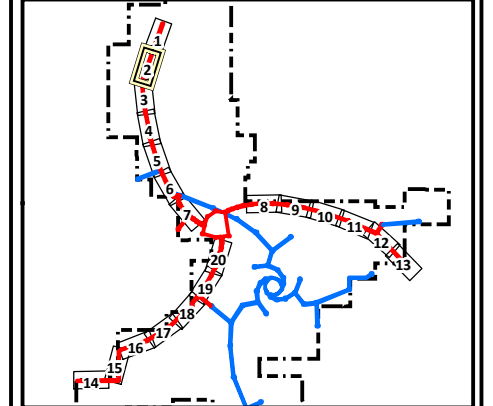


Coordinate System: GDA 1994 MGA Zone 50

- SKA1 - Low
- SKA1 - Survey
- MRO Boundary
- Boolardy Station
- Sherwood Land System
- Previous Survey (Alex Holmes)

- Vegetation Communities**
- AfSa
 - AiAbsa
 - AaAtPs
 - AcAsTd
 - AFEpo
 - AiTdPd
 - ApAgEf
 - ApTh
 - ArCc
 - ArEd
 - ArEf
 - AvEp
 - EvAsEb

- Fauna Habitats**
- Channels and creek line
 - Granite boulders and heaps
 - Granite domes
 - Hardpan plain with intermittent sandplain
 - Non saline stony or gritty surfaced plains
 - Rocky Breakaway and plateau edges
 - Saline lower footslopes below breakaways
 - Sandplain
 - Conservation Significant Flora
 - Erosion
 - Observation
 - Quadrat
 - Trapdoor Spider
 - White-browed Babbler
 - Western Spiny-tailed Skink Observations
 - Western Spiny-tailed Skink Habitat
 - Good to Excellent
 - Moderate
 - Poor

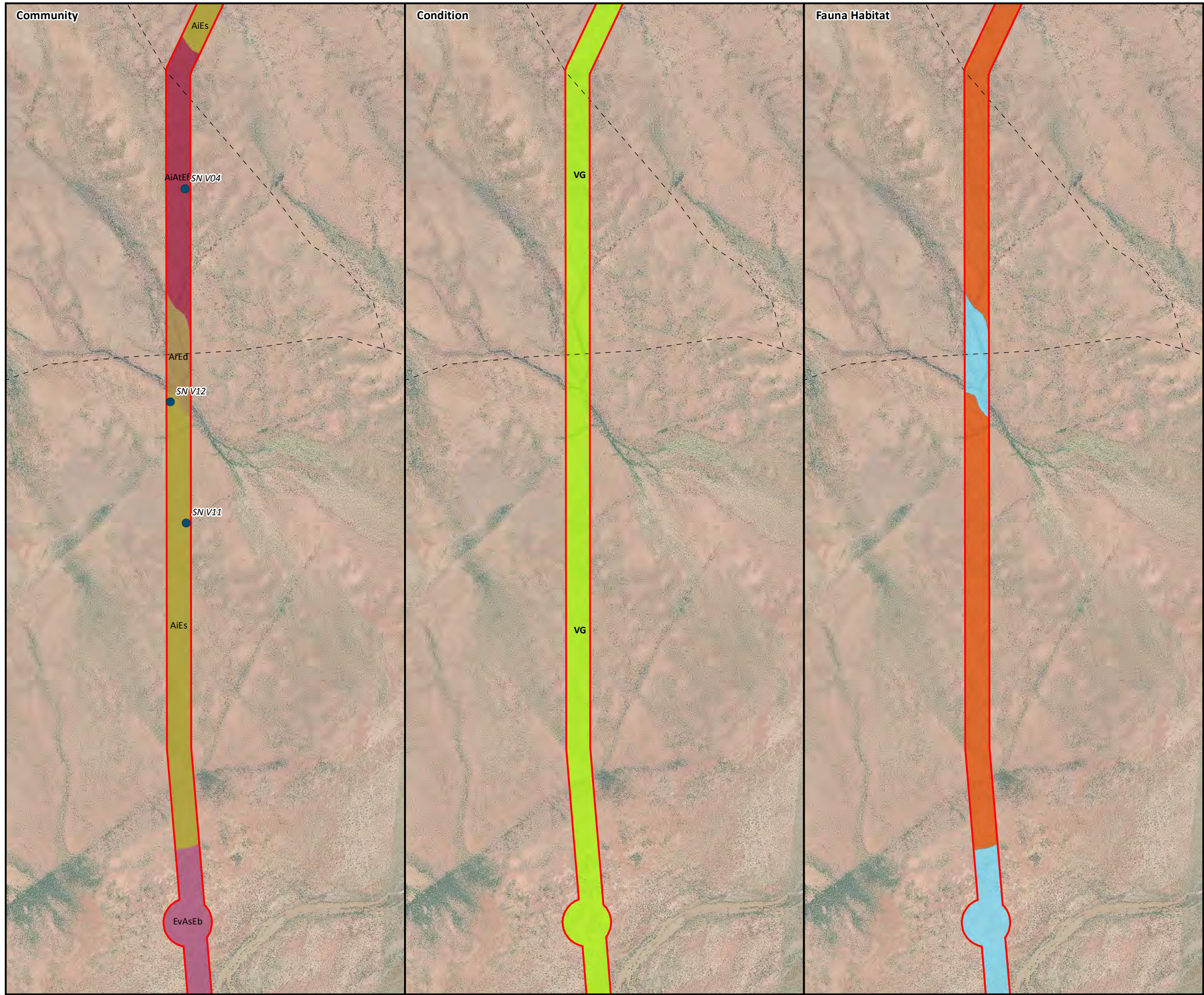


AECOM does not warrant the accuracy or completeness of information displayed in this map and any person using it does so at their own risk. AECOM shall bear no responsibility or liability for any errors, faults, defects, or omissions in the information.

© 2014 AECOM Australia Pty Ltd

Based on information provided by and with the permission of the Western Australian Land Information Authority trading as Landgate (2010).

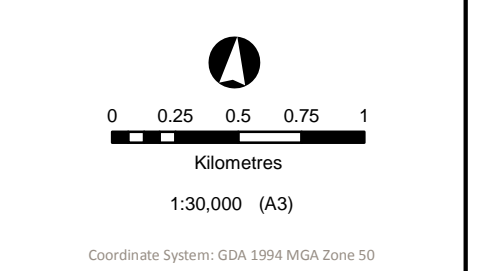




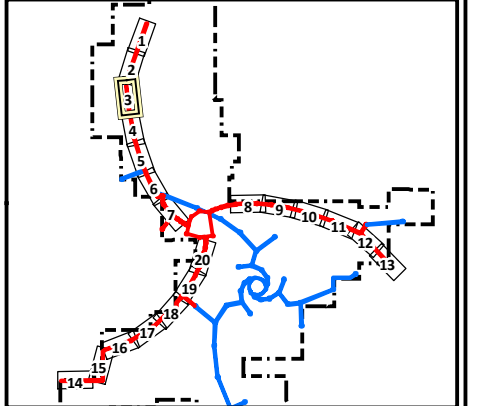
SKA1 - Survey Vegetation Communities, Condition and Fauna Habitats

SKA Ecological Survey

Figure 5.3



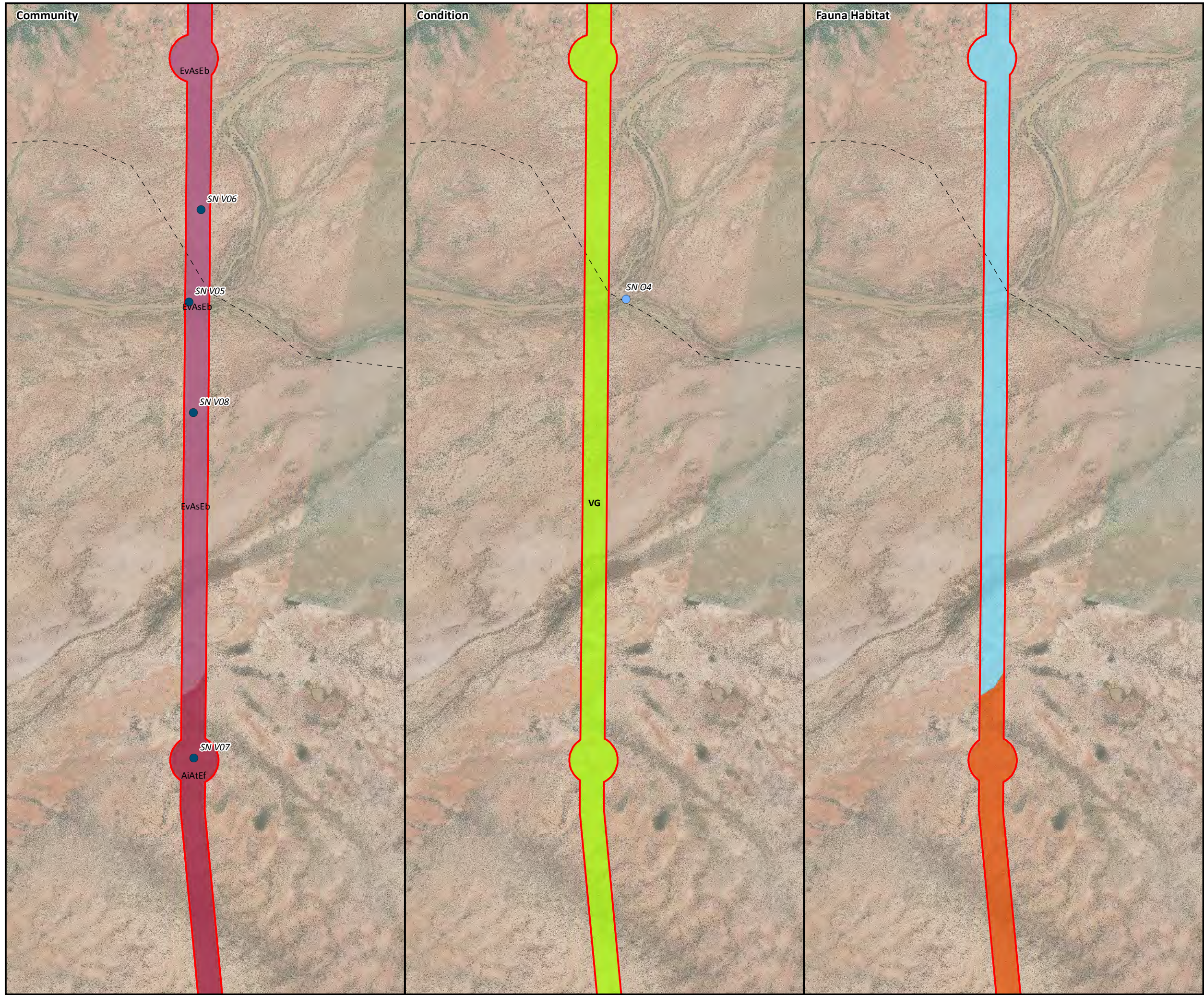
- | | |
|---------------|-------------------------------|
| SKA1 - Low | Booldary Station |
| SKA1 - Survey | Sherwood Land System |
| MRO Boundary | Previous Survey (Alex Holmes) |
-
- | | | | |
|-------------------------------|--------|--------|--------|
| Vegetation Communities | AfSa | AiTdPd | ArEd |
| AaAtPs | AiAbSa | ApAgEf | ArEf |
| AcAsTd | AiAtEf | ApTh | AvEp |
| AfEPo | AiEs | ArCc | EvAsEb |
-
- | | |
|--|---|
| Fauna Habitats | Conservation Significant Flora |
| Channels and creek line | Erosion |
| Granite boulders and heaps | Observation |
| Granite domes | Quadrat |
| Hardpan plain with intermittent sandplain | Trapdoor Spider |
| Non saline stony or gritty surfaced plains | White-browed Babbler |
| Rocky Breakaway and plateau edges | Western Spiny-tailed Skink Observations |
| Saline lower footslopes below breakaways | Western Spiny-tailed Skink Habitat |
| Sandplain | Good to Excellent |
| | Moderate |
| | Poor |



AECOM does not warrant the accuracy or completeness of information displayed in this map and any person using it does so at their own risk. AECOM shall bear no responsibility or liability for any errors, faults, defects, or omissions in the information.

© 2014 AECOM Australia Pty Ltd
Based on information provided by and with the permission of the Western Australian Land Information Authority trading as Landgate (2010).

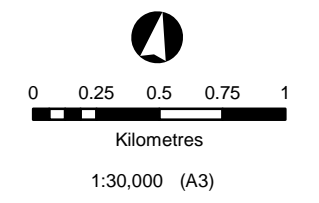




SKA1 - Survey Vegetation Communities, Condition and Fauna Habitats

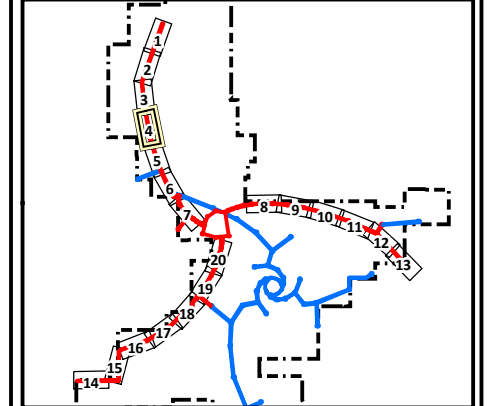
SKA Ecological Survey

Figure 5.4



Coordinate System: GDA 1994 MGA Zone 50

- | | |
|---------------|-------------------------------|
| SKA1 - Low | Boolardy Station |
| SKA1 - Survey | Sherwood Land System |
| MRO Boundary | Previous Survey (Alex Holmes) |
-
- | | | | |
|-------------------------------|--------|--------|--------|
| Vegetation Communities | AfSa | AiTdPd | ArEd |
| AaAtPs | AiAbSa | ApAgEf | ArEf |
| AcAsTd | AiAtEf | ApTh | AvEp |
| AFEpo | AiEs | ArCc | EvAsEb |
-
- | | |
|--|---|
| Fauna Habitats | Conservation Significant Flora |
| Channels and creek line | Erosion |
| Granite boulders and heaps | Observation |
| Granite domes | Quadrat |
| Hardpan plain with intermittent sandplain | Trapdoor Spider |
| Non saline stony or gritty surfaced plains | White-browed Babbler |
| Rocky Breakaway and plateau edges | Western Spiny-tailed Skink Observations |
| Saline lower footslopes below breakaways | Western Spiny-tailed Skink Habitat |
| Sandplain | Good to Excellent |
| | Moderate |
| | Poor |

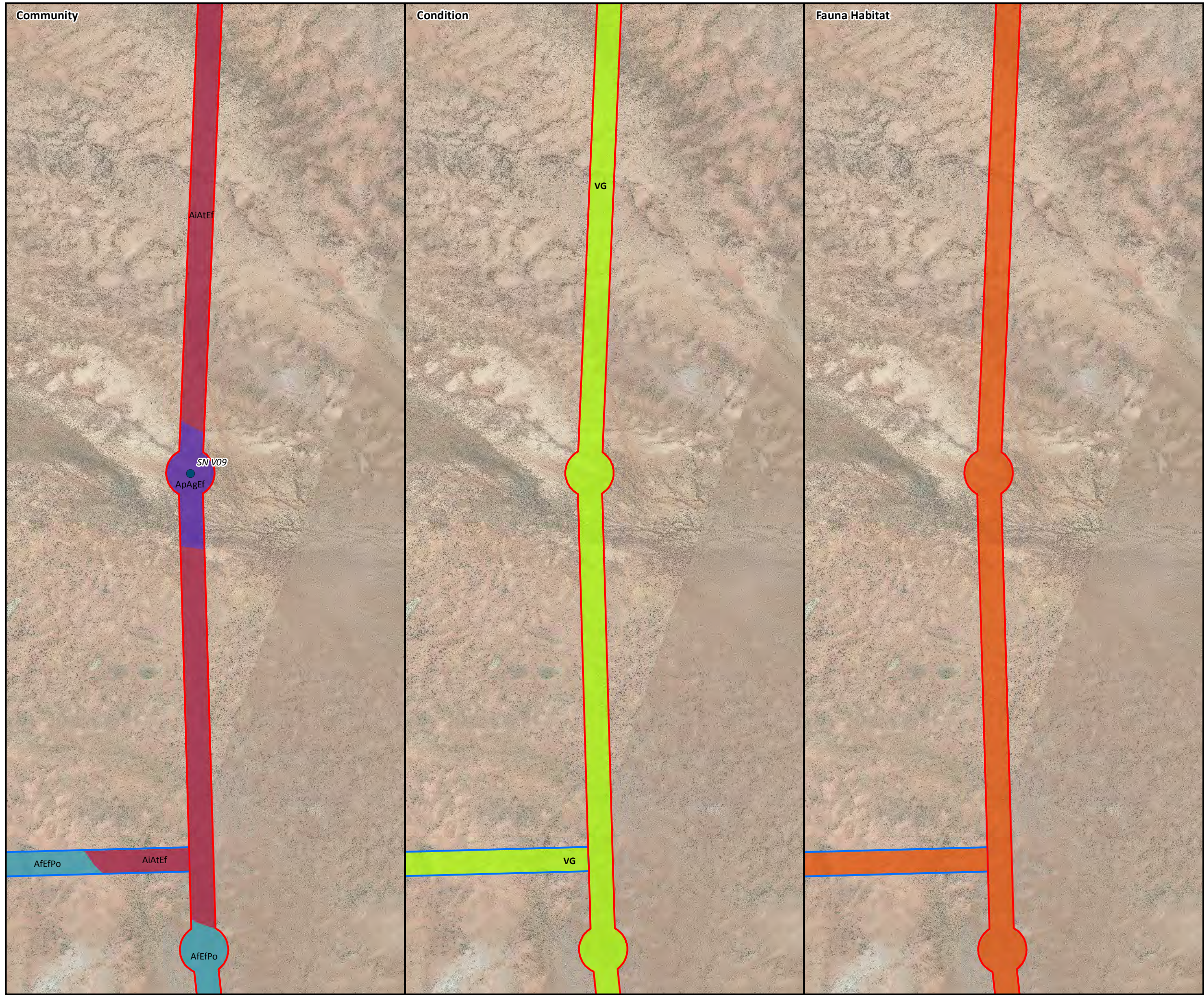


AECOM does not warrant the accuracy or completeness of information displayed in this map and any person using it does so at their own risk. AECOM shall bear no responsibility or liability for any errors, faults, defects, or omissions in the information.

© 2014 AECOM Australia Pty Ltd

Based on information provided by and with the permission of the Western Australian Land Information Authority trading as Landgate (2010).

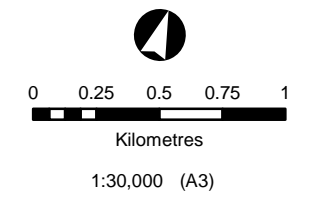




SKA1 - Survey Vegetation Communities, Condition and Fauna Habitats

SKA Ecological Survey

Figure 5.5

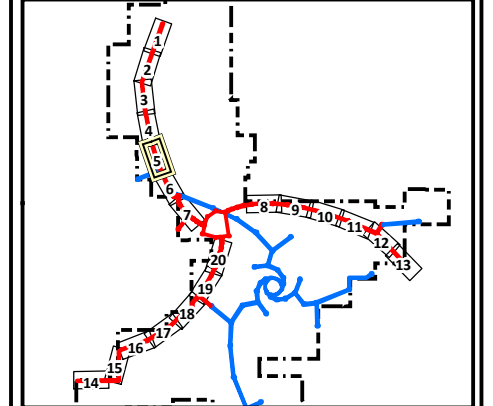


Coordinate System: GDA 1994 MGA Zone 50

- SKA1 - Low
- SKA1 - Survey
- MRO Boundary
- Boolardy Station
- Sherwood Land System
- Previous Survey (Alex Holmes)

- Vegetation Communities**
- AfSa
 - AiTdPd
 - ArEd
 - AiAbSa
 - ApAgEf
 - ArEf
 - AaAtPs
 - AiAtEf
 - ApTh
 - AvEp
 - AcAsTd
 - AiEs
 - ArCc
 - EvAsEb
 - AfEfPo

- Fauna Habitats**
- Channels and creek line
 - Granite boulders and heaps
 - Granite domes
 - Hardpan plain with intermittent sandplain
 - Non saline stony or gritty surfaced plains
 - Rocky Breakaway and plateau edges
 - Saline lower footslopes below breakaways
 - Sandplain
 - Conservation Significant Flora
 - Erosion
 - Observation
 - Quadrat
 - Trapdoor Spider
 - White-browed Babbler
 - Western Spiny-tailed Skink Observations
 - Western Spiny-tailed Skink Habitat
 - Good to Excellent
 - Moderate
 - Poor

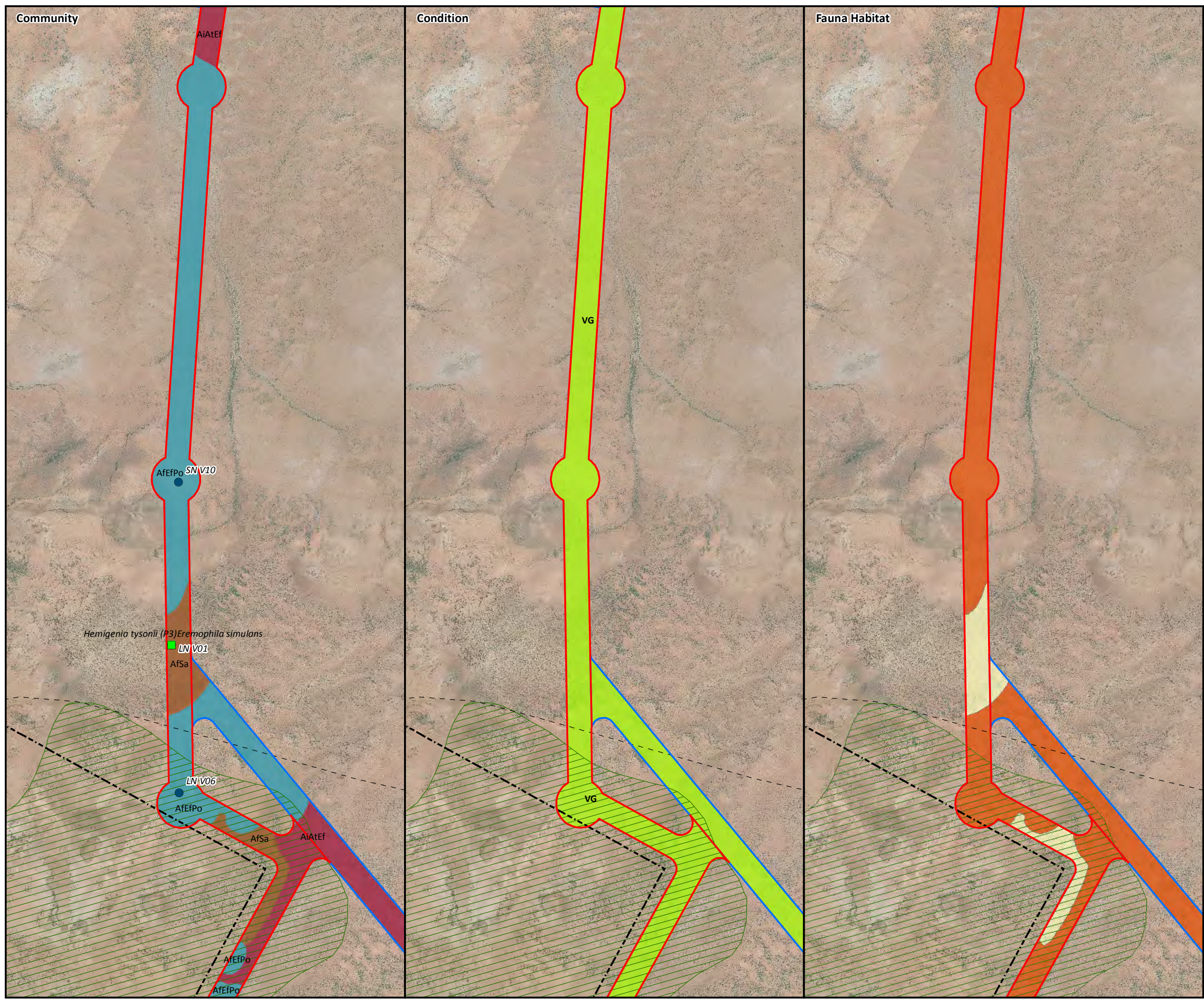


AECOM does not warrant the accuracy or completeness of information displayed in this map and any person using it does so at their own risk. AECOM shall bear no responsibility or liability for any errors, faults, defects, or omissions in the information.

© 2014 AECOM Australia Pty Ltd

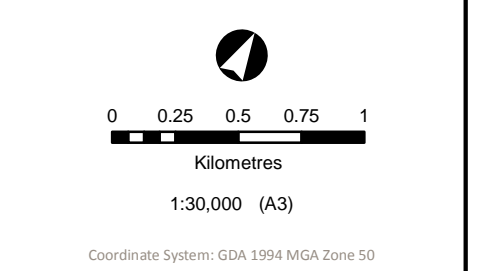
Based on information provided by and with the permission of the Western Australian Land Information Authority trading as Landgate (2010).



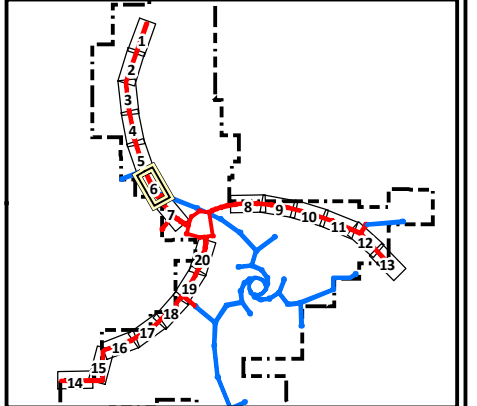


SKA1 - Survey Vegetation Communities, Condition and Fauna Habitats

SKA Ecological Survey
Figure 5.6



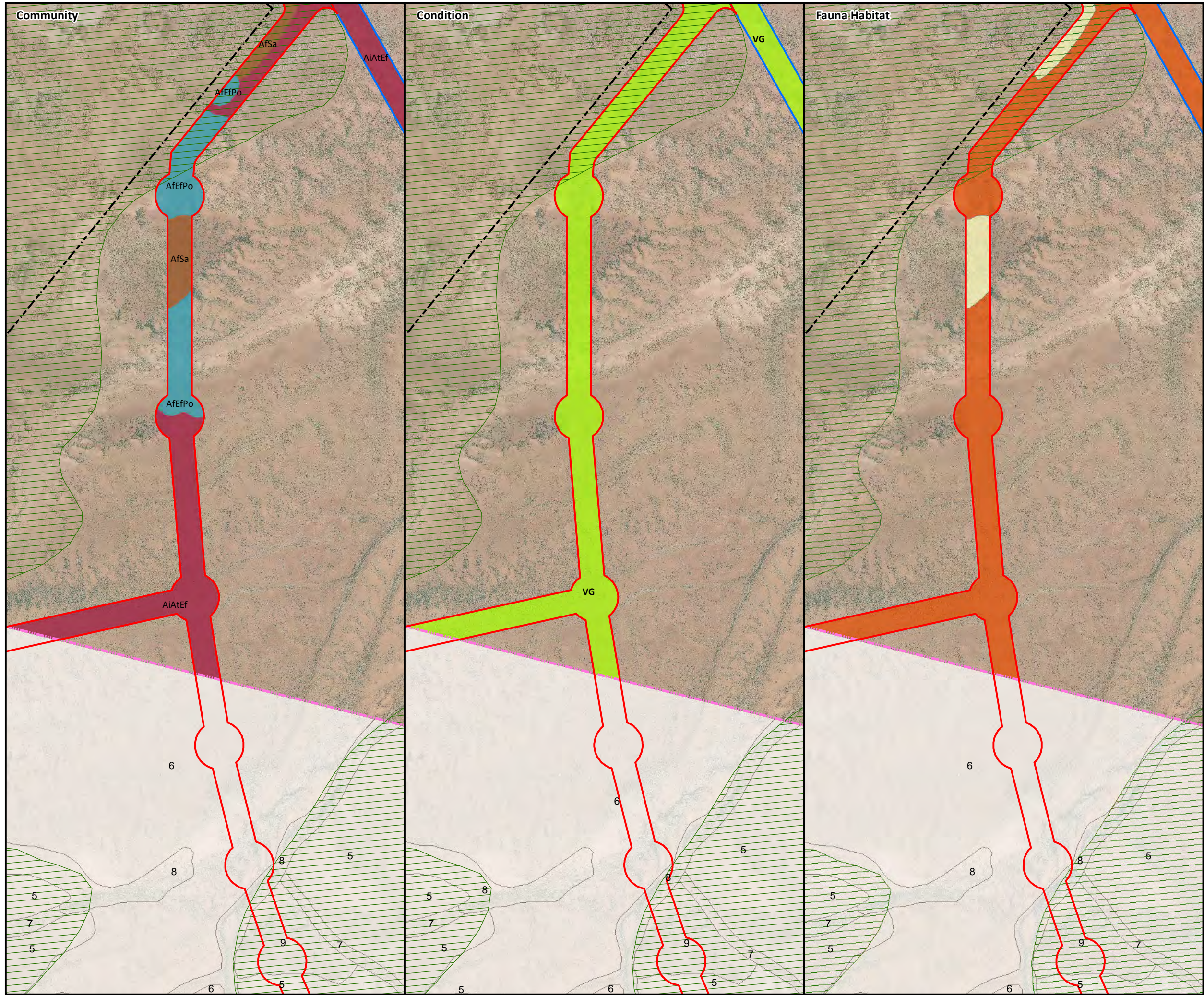
- | | |
|---------------|-------------------------------|
| SKA1 - Low | Boolardy Station |
| SKA1 - Survey | Sherwood Land System |
| MRO Boundary | Previous Survey (Alex Holmes) |
-
- | | | | |
|-------------------------------|--------|--------|--------|
| Vegetation Communities | AfSa | AiTdPd | ArEd |
| | AiAbSa | ApAgEf | ArEf |
| | AaAtPs | AiAtEf | AvEp |
| | AcAsTd | AiEs | ArCc |
| | AFEfPo | ArCc | EvAsEb |
-
- | | |
|--|---|
| Fauna Habitats | Conservation Significant Flora |
| Channels and creek line | Erosion |
| Granite boulders and heaps | Observation |
| Granite domes | Quadrat |
| Hardpan plain with intermittent sandplain | Trapdoor Spider |
| Non saline stony or gritty surfaced plains | White-browed Babbler |
| Rocky Breakaway and plateau edges | Western Spiny-tailed Skink Observations |
| Saline lower footslopes below breakaways | Western Spiny-tailed Skink Habitat |
| Sandplain | Good to Excellent |
| | Moderate |
| | Poor |



AECOM does not warrant the accuracy or completeness of information displayed in this map and any person using it does so at their own risk. AECOM shall bear no responsibility or liability for any errors, faults, defects, or omissions in the information.

© 2014 AECOM Australia Pty Ltd
Based on information provided by and with the permission of the Western Australian Land Information Authority trading as Landgate (2010).

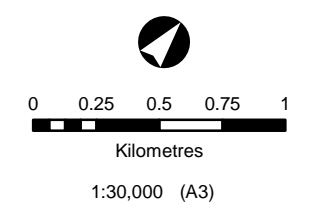




SKA1 - Survey Vegetation Communities, Condition and Fauna Habitats

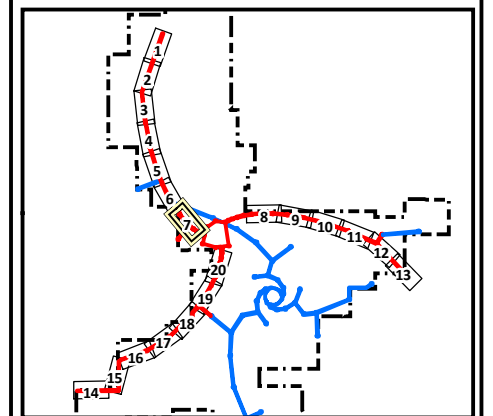
SKA Ecological Survey

Figure 5.7



Coordinate System: GDA 1994 MGA Zone 50

- | | |
|---------------|-------------------------------|
| SKA1 - Low | Boolardy Station |
| SKA1 - Survey | Sherwood Land System |
| MRO Boundary | Previous Survey (Alex Holmes) |
-
- | | | | |
|-------------------------------|--------|--------|--------|
| Vegetation Communities | AFSa | AITdPd | ArEd |
| AaAtPs | AIAbSa | ApAgEf | ArEf |
| AcAsTd | AIAtEf | ApTh | AvEp |
| AFEfPo | AIEs | ArCc | EvAsEb |
-
- | | |
|--|---|
| Fauna Habitats | Conservation Significant Flora |
| Channels and creek line | Erosion |
| Granite boulders and heaps | Observation |
| Granite domes | Quadrat |
| Hardpan plain with intermittent sandplain | Trapdoor Spider |
| Non saline stony or gritty surfaced plains | White-browed Babbler |
| Rocky Breakaway and plateau edges | Western Spiny-tailed Skink Observations |
| Saline lower footslopes below breakaways | Western Spiny-tailed Skink Habitat |
| Sandplain | Good to Excellent |
| | Moderate |
| | Poor |

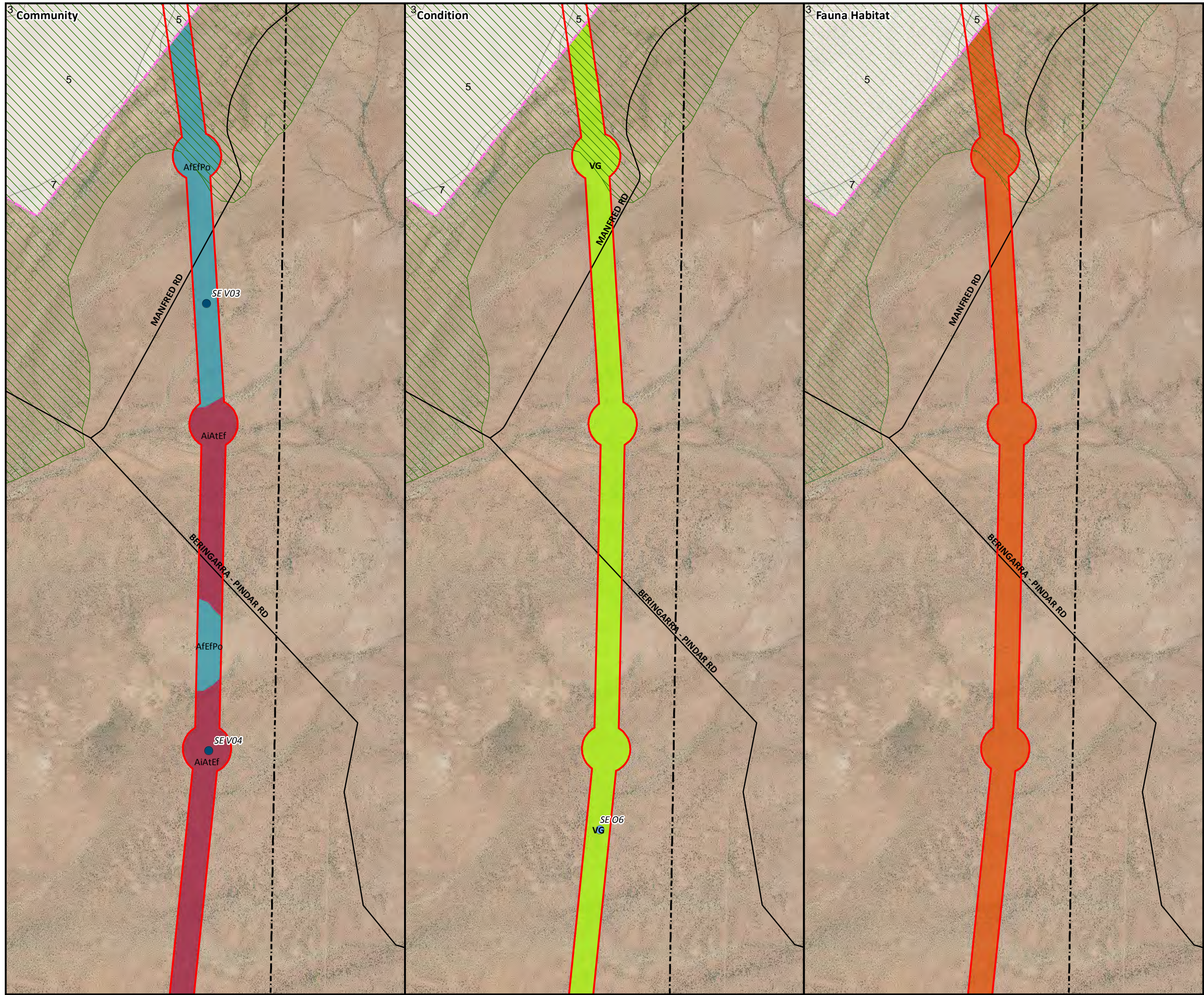


AECOM does not warrant the accuracy or completeness of information displayed in this map and any person using it does so at their own risk. AECOM shall bear no responsibility or liability for any errors, faults, defects, or omissions in the information.

© 2014 AECOM Australia Pty Ltd

Based on information provided by and with the permission of the Western Australian Land Information Authority trading as Landgate (2010).

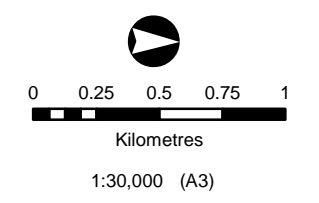




SKA1 - Survey Vegetation Communities, Condition and Fauna Habitats

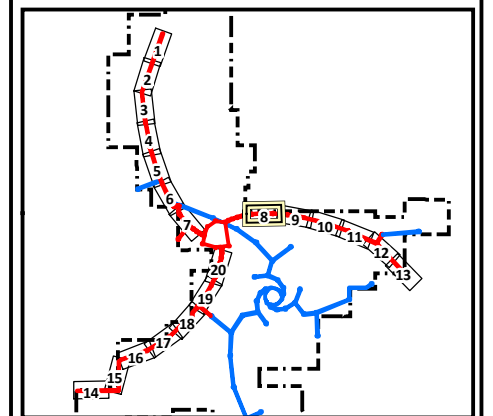
SKA Ecological Survey

Figure 5.8



Coordinate System: GDA 1994 MGA Zone 50

- | | |
|---------------|-------------------------------|
| SKA1 - Low | Boolardy Station |
| SKA1 - Survey | Sherwood Land System |
| MRO Boundary | Previous Survey (Alex Holmes) |
-
- | | | | |
|-------------------------------|--------|--------|--------|
| Vegetation Communities | AfSa | AiTdPd | ArEd |
| AaAtPs | AiAbSa | ApAgEf | ArEf |
| AcAsTd | AiAtEf | ApTh | AvEp |
| AfEfPo | AiEs | ArCc | EvAsEb |
-
- | | |
|--|---|
| Fauna Habitats | Conservation Significant Flora |
| Channels and creek line | Erosion |
| Granite boulders and heaps | Observation |
| Granite domes | Quadrat |
| Hardpan plain with intermittent sandplain | Trapdoor Spider |
| Non saline stony or gritty surfaced plains | White-browed Babbler |
| Rocky Breakaway and plateau edges | Western Spiny-tailed Skink Observations |
| Saline lower footslopes below breakaways | Western Spiny-tailed Skink Habitat |
| Sandplain | Good to Excellent |
| | Moderate |
| | Poor |

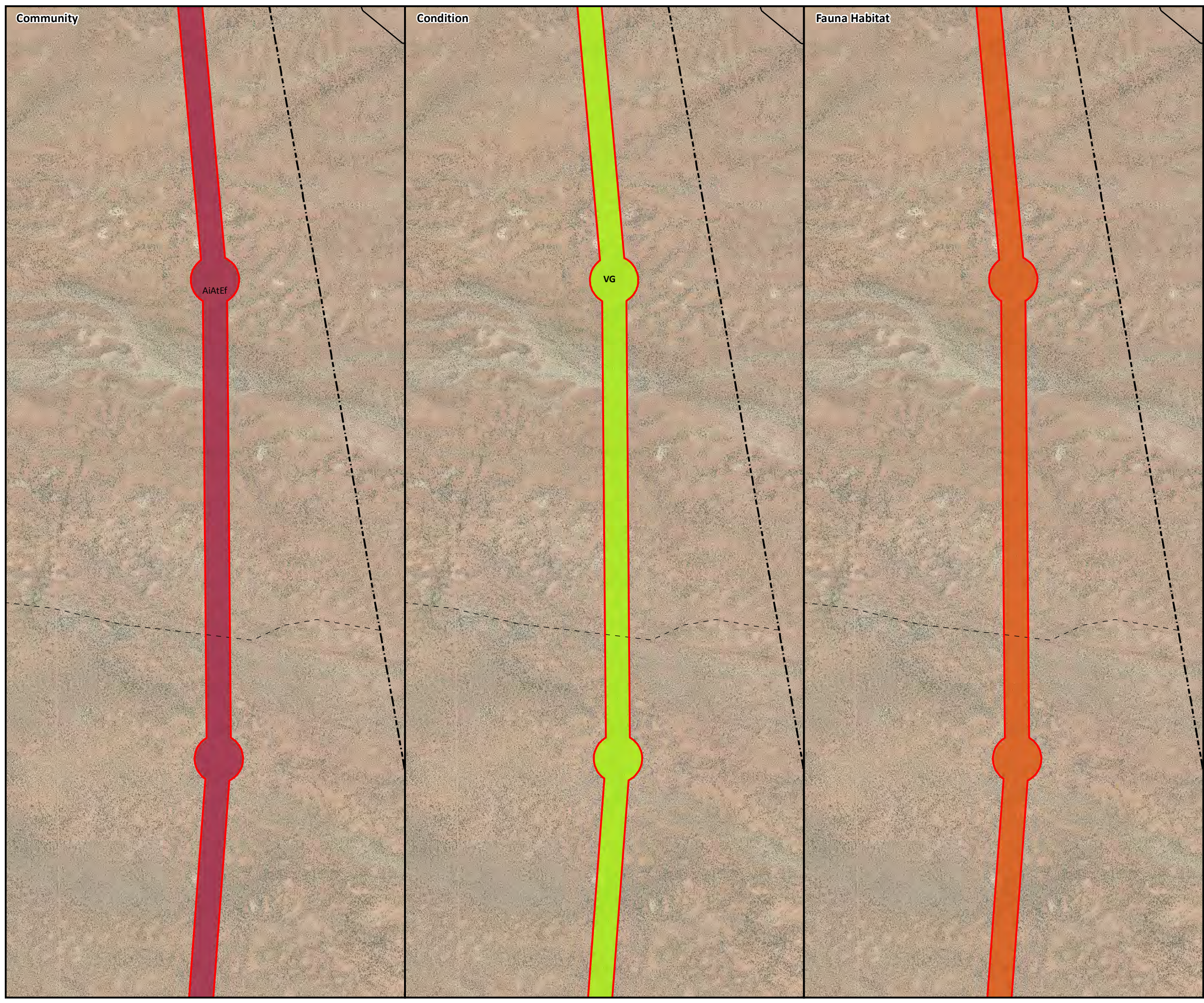


AECOM does not warrant the accuracy or completeness of information displayed in this map and any person using it does so at their own risk. AECOM shall bear no responsibility or liability for any errors, faults, defects, or omissions in the information.

© 2014 AECOM Australia Pty Ltd

Based on information provided by and with the permission of the Western Australian Land Information Authority trading as Landgate (2010).

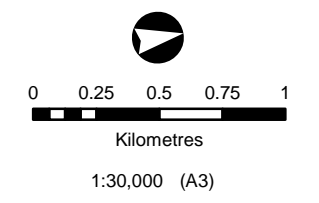




SKA1 - Survey Vegetation Communities, Condition and Fauna Habitats

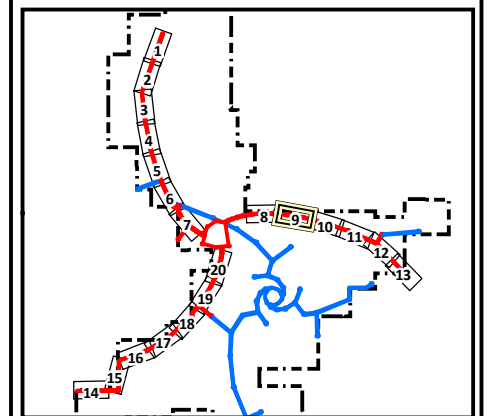
SKA Ecological Survey

Figure 5.9



Coordinate System: GDA 1994 MGA Zone 50

- | | | | |
|--|---------------|--|-------------------------------|
| | SKA1 - Low | | Boolarly Station |
| | SKA1 - Survey | | Sherwood Land System |
| | MRO Boundary | | Previous Survey (Alex Holmes) |
-
- | | | | |
|-------------------------------|--------|--------|--------|
| Vegetation Communities | AfSa | AiTdPd | ArEd |
| | AiAbsa | ApAgEf | ArEf |
| | AaAtPs | AiATef | AvEp |
| | AcAsTd | AiEs | EvAsEb |
| | AFEpO | ArCc | |
-
- | | |
|--|---|
| Fauna Habitats | Conservation Significant Flora |
| Channels and creek line | Erosion |
| Granite boulders and heaps | Observation |
| Granite domes | Quadrat |
| Hardpan plain with intermittent sandplain | Trapdoor Spider |
| Non saline stony or gritty surfaced plains | White-browed Babbler |
| Rocky Breakaway and plateau edges | Western Spiny-tailed Skink Observations |
| Saline lower footslopes below breakaways | Western Spiny-tailed Skink Habitat |
| Sandplain | Good to Excellent |
| | Moderate |
| | Poor |

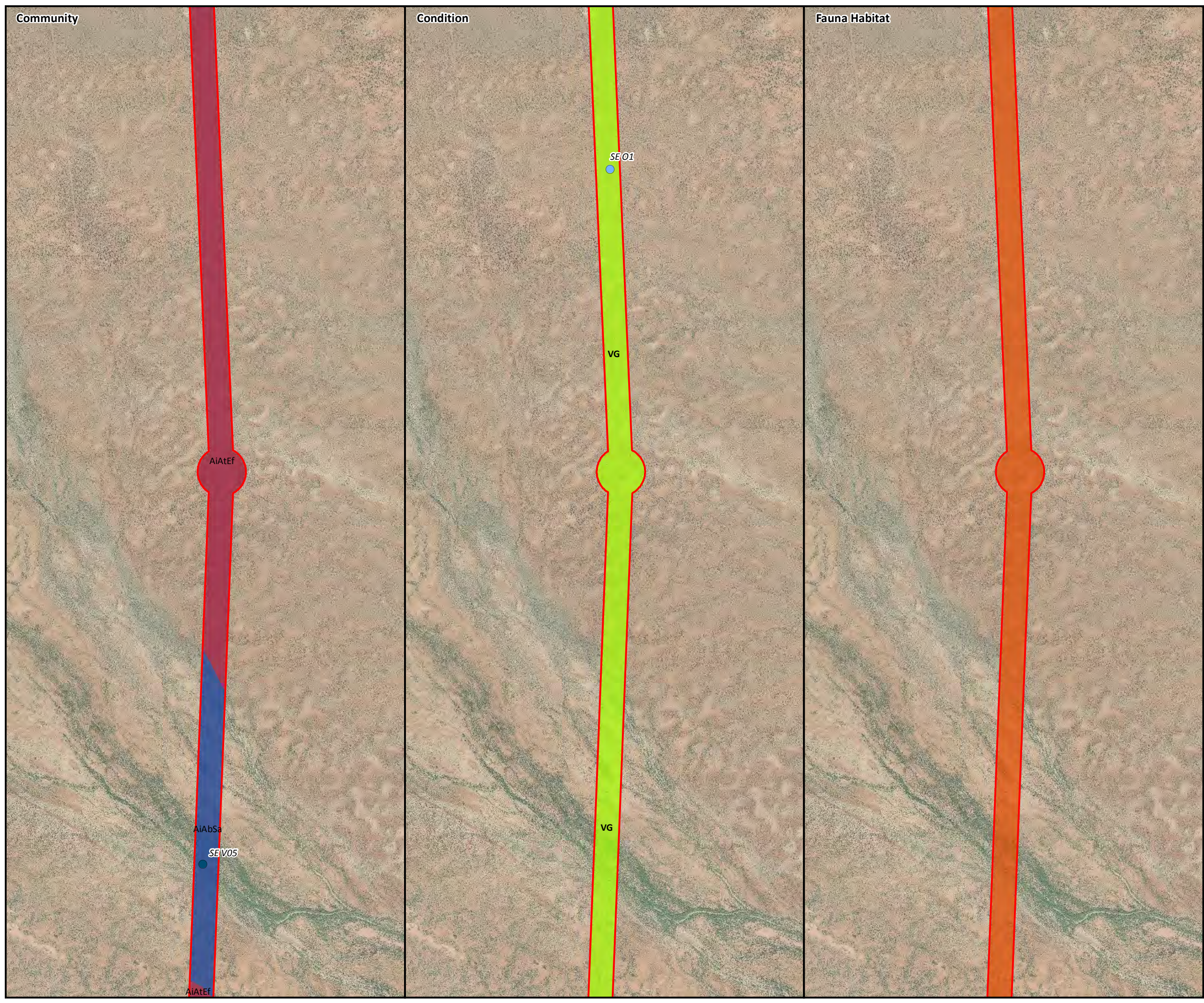


AECOM does not warrant the accuracy or completeness of information displayed in this map and any person using it does so at their own risk. AECOM shall bear no responsibility or liability for any errors, faults, defects, or omissions in the information.

© 2014 AECOM Australia Pty Ltd

Based on information provided by and with the permission of the Western Australian Land Information Authority trading as Landgate (2010).

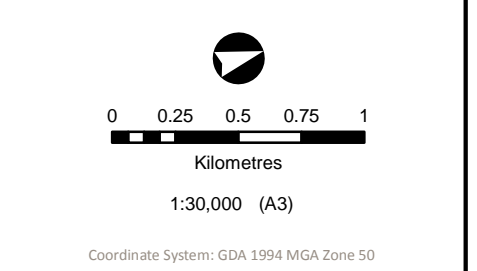




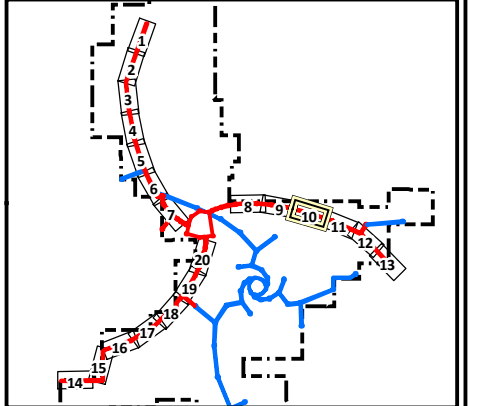
SKA1 - Survey Vegetation Communities, Condition and Fauna Habitats

SKA Ecological Survey

Figure 5.10



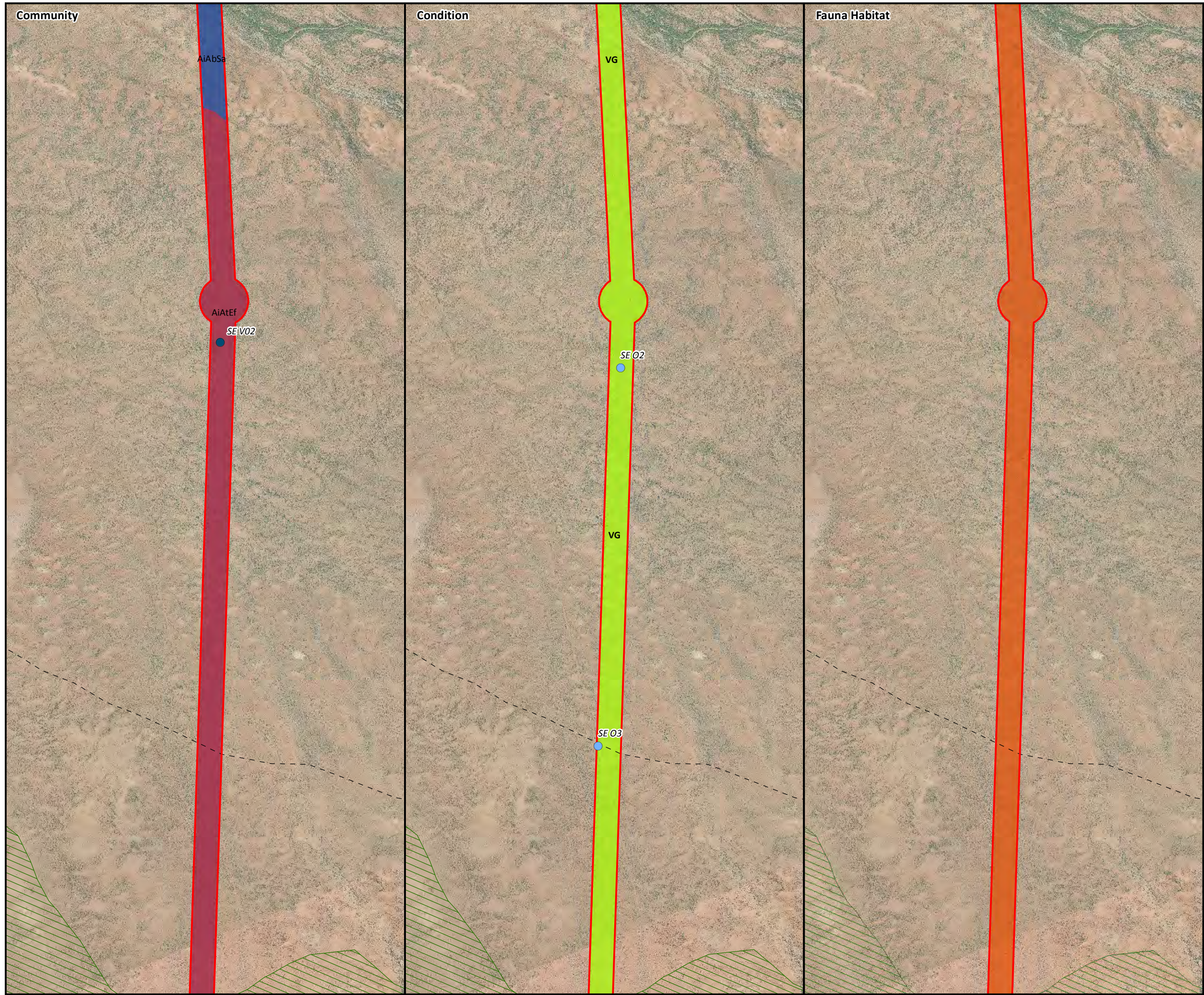
- | | | | |
|--|---------------|--|-------------------------------|
| | SKA1 - Low | | Boolarly Station |
| | SKA1 - Survey | | Sherwood Land System |
| | MRO Boundary | | Previous Survey (Alex Holmes) |
-
- | | | | |
|-------------------------------|--------|--------|--------|
| Vegetation Communities | AfSa | AiTdPd | ArEd |
| AaAtPs | AiAbSa | ApAgEf | ArEf |
| AcAsTd | AiATEf | ApTh | AvEp |
| AFEfPo | AiEs | ArCc | EvAsEb |
-
- | | |
|--|---|
| Fauna Habitats | Conservation Significant Flora |
| Channels and creek line | Erosion |
| Granite boulders and heaps | Observation |
| Granite domes | Quadrat |
| Hardpan plain with intermittent sandplain | Trapdoor Spider |
| Non saline stony or gritty surfaced plains | White-browed Babbler |
| Rocky Breakaway and plateau edges | Western Spiny-tailed Skink Observations |
| Saline lower footslopes below breakaways | Western Spiny-tailed Skink Habitat |
| Sandplain | Good to Excellent |
| | Moderate |
| | Poor |



AECOM does not warrant the accuracy or completeness of information displayed in this map and any person using it does so at their own risk. AECOM shall bear no responsibility or liability for any errors, faults, defects, or omissions in the information.

© 2014 AECOM Australia Pty Ltd
Based on information provided by and with the permission of the Western Australian Land Information Authority trading as Landgate (2010).

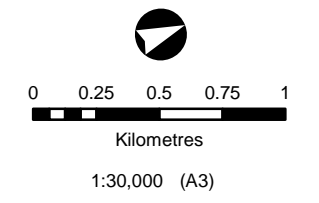




SKA1 - Survey Vegetation Communities, Condition and Fauna Habitats

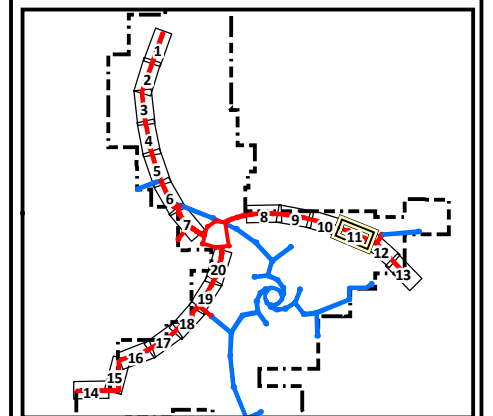
SKA Ecological Survey

Figure 5.11



Coordinate System: GDA 1994 MGA Zone 50

- | | | | |
|--|---------------|--|-------------------------------|
| | SKA1 - Low | | Boolarly Station |
| | SKA1 - Survey | | Sherwood Land System |
| | MRO Boundary | | Previous Survey (Alex Holmes) |
-
- | | | | | | | |
|-------------------------------|--|--------|--|--------|--|--------|
| Vegetation Communities | | AfSa | | AItdPd | | ArEd |
| | | AiAbSa | | ApAgEf | | ArEf |
| | | AaAtPs | | AiATEf | | ApTh |
| | | AcAsTd | | AIEs | | ArCc |
| | | AFEPo | | | | EvAsEb |
-
- | | | | | |
|-----------------------|--|--|---|---|
| Fauna Habitats | | Channels and creek line | | Conservation Significant Flora |
| | | Granite boulders and heaps | | Erosion |
| | | Granite domes | | Observation |
| | | Hardpan plain with intermittent sandplain | | Quadrat |
| | | Non saline stony or gritty surfaced plains | | Trapdoor Spider |
| | | Rocky Breakaway and plateau edges | | White-browed Babbler |
| | | Saline lower footslopes below breakaways | | Western Spiny-tailed Skink Observations |
| | | Sandplain | Western Spiny-tailed Skink Habitat | |
| | | | | Good to Excellent |
| | | | | Moderate |
| | | | | Poor |

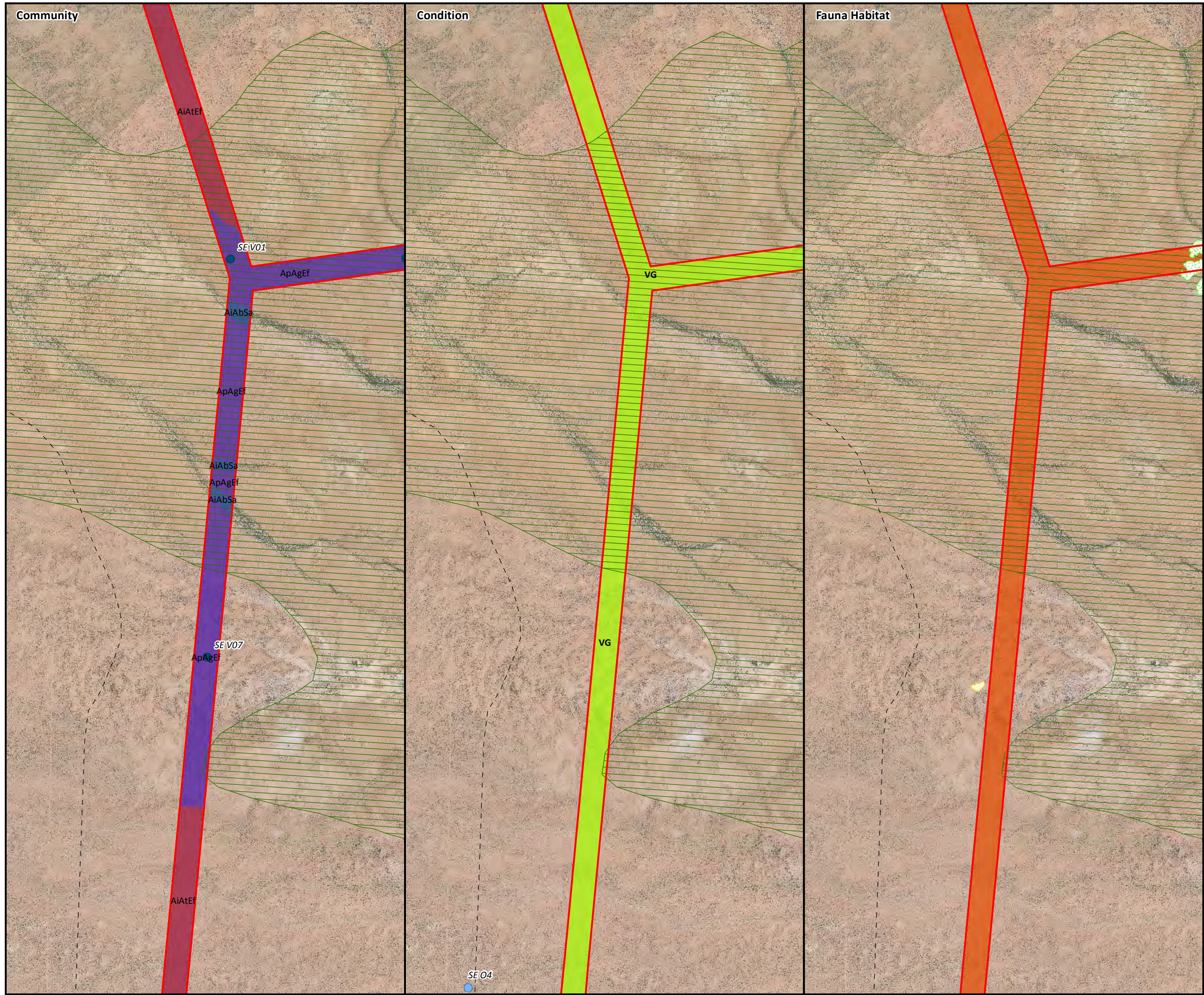


AECOM does not warrant the accuracy or completeness of information displayed in this map and any person using it does so at their own risk. AECOM shall bear no responsibility or liability for any errors, faults, defects, or omissions in the information.

© 2014 AECOM Australia Pty Ltd

Based on information provided by and with the permission of the Western Australian Land Information Authority trading as Landgate (2010).

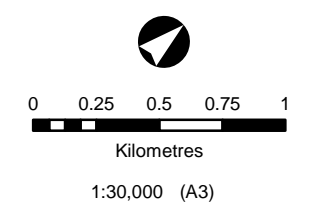




SKA1 - Survey Vegetation Communities, Condition and Fauna Habitats

SKA Ecological Survey

Figure 5.12

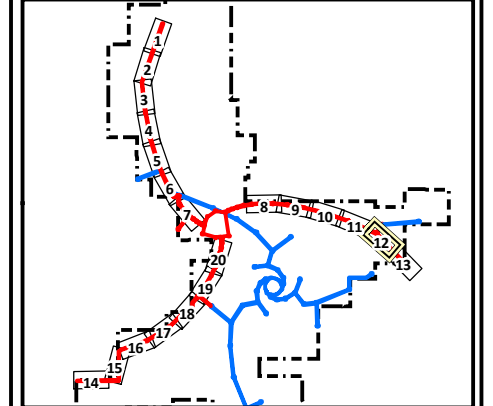


Coordinate System: GDA 1994 MGA Zone 50

- SKA1 - Low
- SKA1 - Survey
- MRO Boundary
- Boolardy Station
- Sherwood Land System
- Previous Survey (Alex Holmes)

- Vegetation Communities**
- | | | |
|--------|--------|--------|
| AfSa | AiTdPd | ArEd |
| AiAbSa | ApAgEf | ArEf |
| AaAtPs | AiAtEf | AvEp |
| AcAsTd | ApTh | EvAsEb |
| AfEPo | AiEs | ArCc |

- Fauna Habitats**
- | | |
|--|---|
| Channels and creek line | Conservation Significant Flora |
| Granite boulders and heaps | Erosion |
| Granite domes | Observation |
| Hardpan plain with intermittent sandplain | Quadrat |
| Non saline stony or gritty surfaced plains | Trapdoor Spider |
| Rocky Breakaway and plateau edges | White-browed Babbler |
| Saline lower footslopes below breakaways | Western Spiny-tailed Skink Observations |
| Sandplain | Western Spiny-tailed Skink Habitat |
| | Good to Excellent |
| | Moderate |
| | Poor |

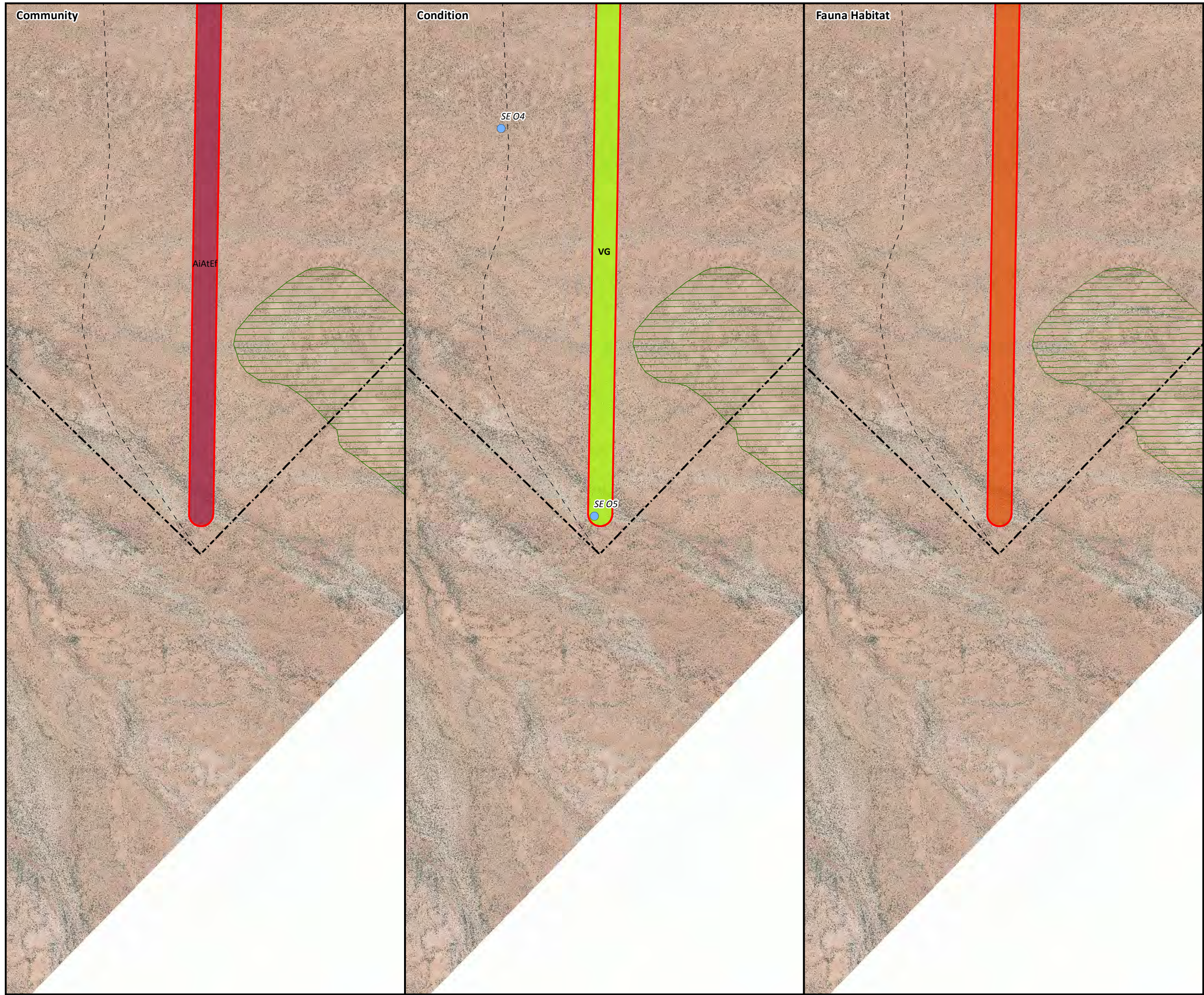


AECOM does not warrant the accuracy or completeness of information displayed in this map and any person using it does so at their own risk. AECOM shall bear no responsibility or liability for any errors, faults, defects, or omissions in the information.

© 2014 AECOM Australia Pty Ltd

Based on information provided by and with the permission of the Western Australian Land Information Authority trading as Landgate (2010).

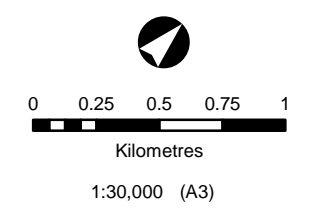




SKA1 - Survey Vegetation Communities, Condition and Fauna Habitats

SKA Ecological Survey

Figure 5.13

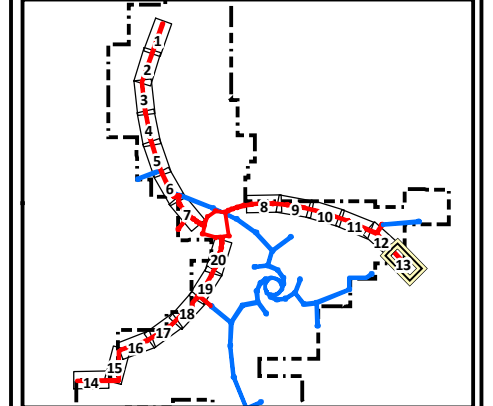


Coordinate System: GDA 1994 MGA Zone 50

- SKA1 - Low
- SKA1 - Survey
- MRO Boundary
- Boolardy Station
- Sherwood Land System
- Previous Survey (Alex Holmes)

- Vegetation Communities**
- | | | |
|--|--|--|
| AIATEF | AIATEF | AIATEF |
| AIATEF | AIATEF | AIATEF |
| AIATEF | AIATEF | AIATEF |
| AIATEF | AIATEF | AIATEF |

- Fauna Habitats**
- | | |
|--|---|
| Channels and creek line | Conservation Significant Flora |
| Granite boulders and heaps | Erosion |
| Granite domes | Observation |
| Hardpan plain with intermittent sandplain | Quadrat |
| Non saline stony or gritty surfaced plains | ★ Trapdoor Spider |
| Rocky Breakaway and plateau edges | △ White-browed Babbler |
| Saline lower footslopes below breakaways | ▲ Western Spiny-tailed Skink Observations |
| Sandplain | Western Spiny-tailed Skink Habitat |
| | Good to Excellent |
| | Moderate |
| | Poor |



AECOM does not warrant the accuracy or completeness of information displayed in this map and any person using it does so at their own risk. AECOM shall bear no responsibility or liability for any errors, faults, defects, or omissions in the information.

© 2014 AECOM Australia Pty Ltd

Based on information provided by and with the permission of the Western Australian Land Information Authority trading as Landgate (2010).

