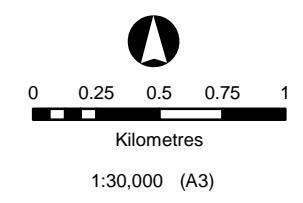


SKA1 - Low Vegetation Communities, Condition and Fauna Habitats

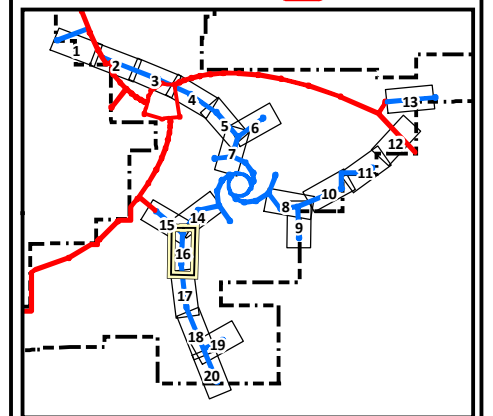
SKA Ecological Survey

Figure 6.16



Coordinate System: GDA 1994 MGA Zone 50

- | | |
|---------------|-------------------------------|
| SKA1 - Low | Boolardy Station |
| SKA1 - Survey | Sherwood Land System |
| MRO Boundary | Previous Survey (Alex Holmes) |
-
- | | | | |
|-------------------------------|--------|--------|--------|
| Vegetation Communities | AfSa | AiTdPd | ArEd |
| AaAtPs | AiAbSa | ApAgEf | ArEf |
| AcAsTd | AiAtEf | ApTh | AvEp |
| AFEpO | AiES | ArCc | EvAsEb |
-
- | | |
|--|---|
| Fauna Habitats | Conservation Significant Flora |
| Channels and creek line | Erosion |
| Granite boulders and heaps | Observation |
| Granite domes | Quadrat |
| Hardpan plain with intermittent sandplain | Trapdoor Spider |
| Non saline stony or gritty surfaced plains | White-browed Babbler |
| Rocky Breakaway and plateau edges | Western Spiny-tailed Skink Observations |
| Saline lower footslopes below breakaways | Western Spiny-tailed Skink Habitat |
| Sandplain | Good to Excellent |
| | Moderate |
| | Poor |

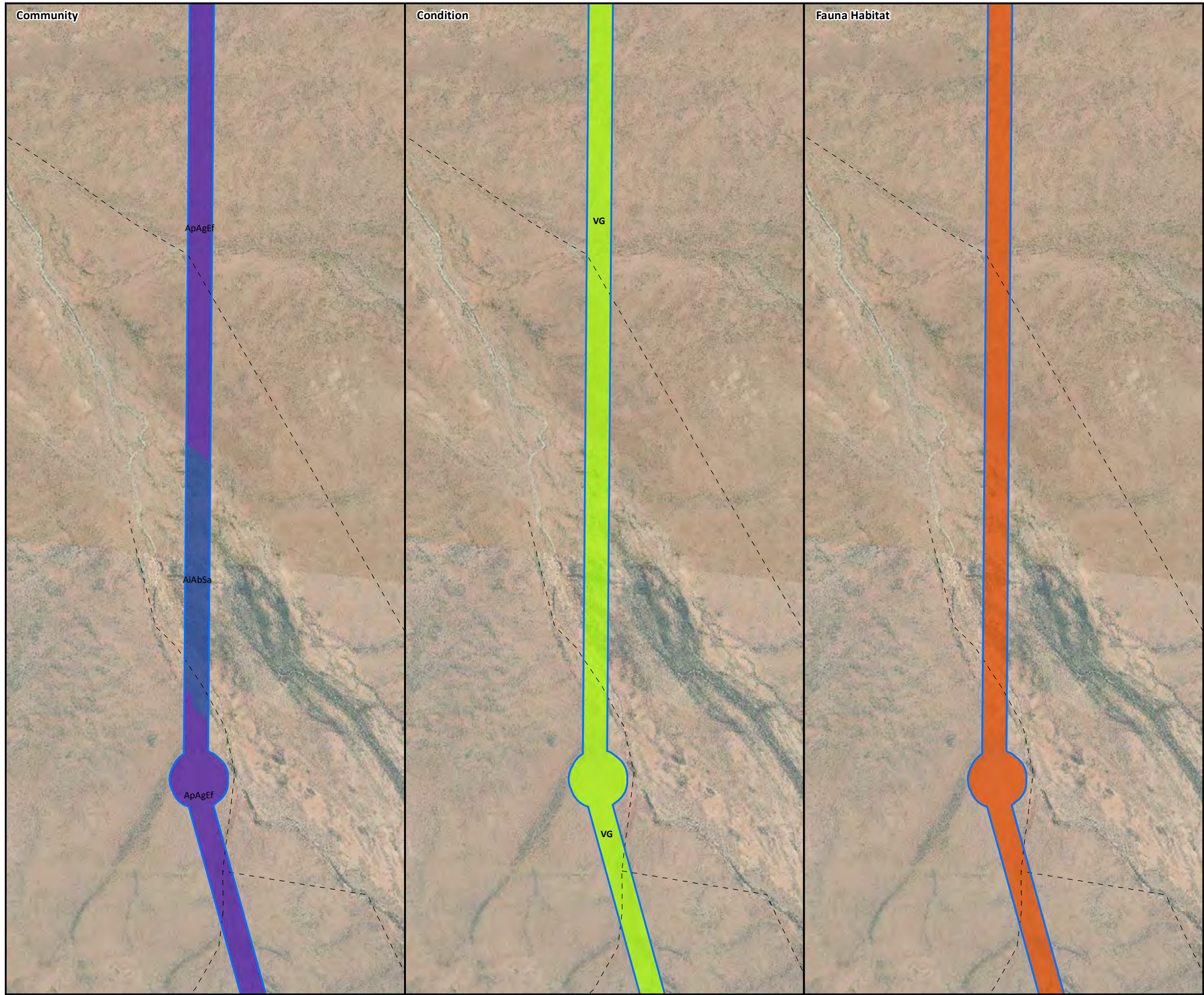


AECOM does not warrant the accuracy or completeness of information displayed in this map and any person using it does so at their own risk. AECOM shall bear no responsibility or liability for any errors, faults, defects, or omissions in the information.

© 2014 AECOM Australia Pty Ltd

Based on information provided by and with the permission of the Western Australian Land Information Authority trading as Landgate (2010).

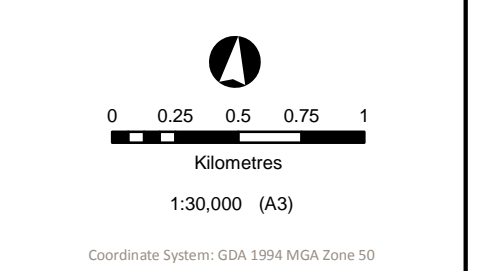




**SKA1 - Low
Vegetation Communities,
Condition and Fauna Habitats**

SKA Ecological Survey

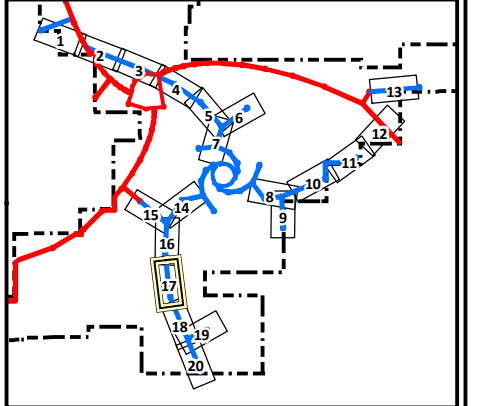
Figure 6.17



SKA1 - Low	Boolardy Station
SKA1 - Survey	Sherwood Land System
MRO Boundary	Previous Survey (Alex Holmes)

Vegetation Communities	AfSa	AiTdPd	ArEd
AaAtPs	AiAbSa	ApAgEf	ArEf
AcAsTd	AiAtEf	ApTh	AvEp
AFEFpo	AiEs	ArCc	EvAsEb

Fauna Habitats	Conservation Significant Flora
Channels and creek line	Erosion
Granite boulders and heaps	Observation
Granite domes	Quadrat
Hardpan plain with intermittent sandplain	Trapdoor Spider
Non saline stony or gritty surfaced plains	White-browed Babbler
Rocky Breakaway and plateau edges	Western Spiny-tailed Skink Observations
Saline lower footslopes below breakaways	Western Spiny-tailed Skink Habitat
Sandplain	Good to Excellent
	Moderate
	Poor

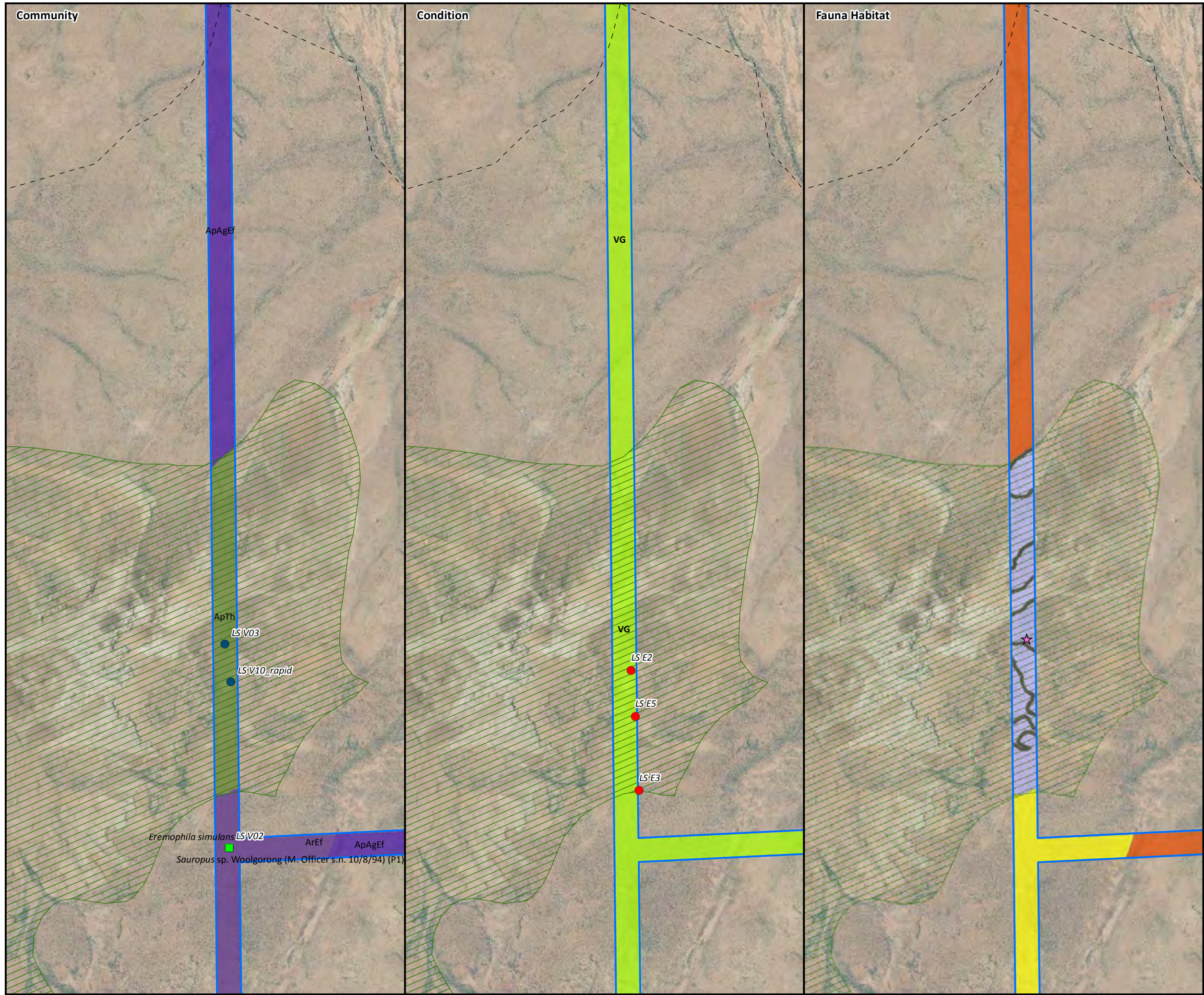


AECOM does not warrant the accuracy or completeness of information displayed in this map and any person using it does so at their own risk. AECOM shall bear no responsibility or liability for any errors, faults, defects, or omissions in the information.

© 2014 AECOM Australia Pty Ltd

Based on information provided by and with the permission of the Western Australian Land Information Authority trading as Landgate (2010).

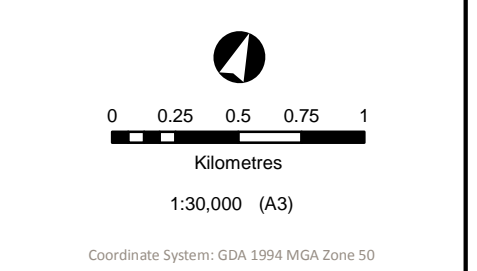




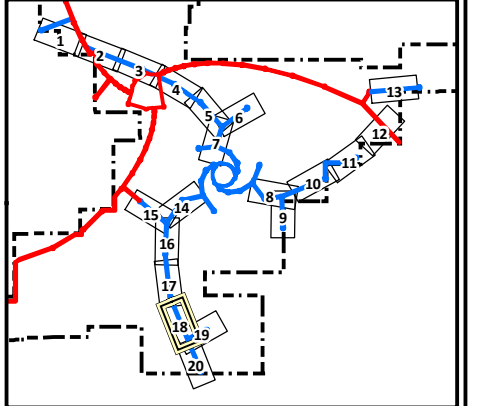
**SKA1 - Low
Vegetation Communities,
Condition and Fauna Habitats**

SKA Ecological Survey

Figure 6.18



- | | |
|---------------|-------------------------------|
| SKA1 - Low | Boolardy Station |
| SKA1 - Survey | Sherwood Land System |
| MRO Boundary | Previous Survey (Alex Holmes) |
-
- | | | | |
|-------------------------------|--------|--------|--------|
| Vegetation Communities | AfSa | AiTdPd | ArEd |
| AaAtPs | AiAbSa | ApAgEf | ArEf |
| AcAsTd | AiAtEf | ApTh | AvEp |
| AFEpo | AiEs | ArCc | EvAsEb |
-
- | | |
|--|---|
| Fauna Habitats | Conservation Significant Flora |
| Channels and creek line | Erosion |
| Granite boulders and heaps | Observation |
| Granite domes | Quadrat |
| Hardpan plain with intermittent sandplain | Trapdoor Spider |
| Non saline stony or gritty surfaced plains | White-browed Babbler |
| Rocky Breakaway and plateau edges | Western Spiny-tailed Skink Observations |
| Saline lower footslopes below breakaways | Western Spiny-tailed Skink Habitat |
| Sandplain | Good to Excellent |
| | Moderate |
| | Poor |

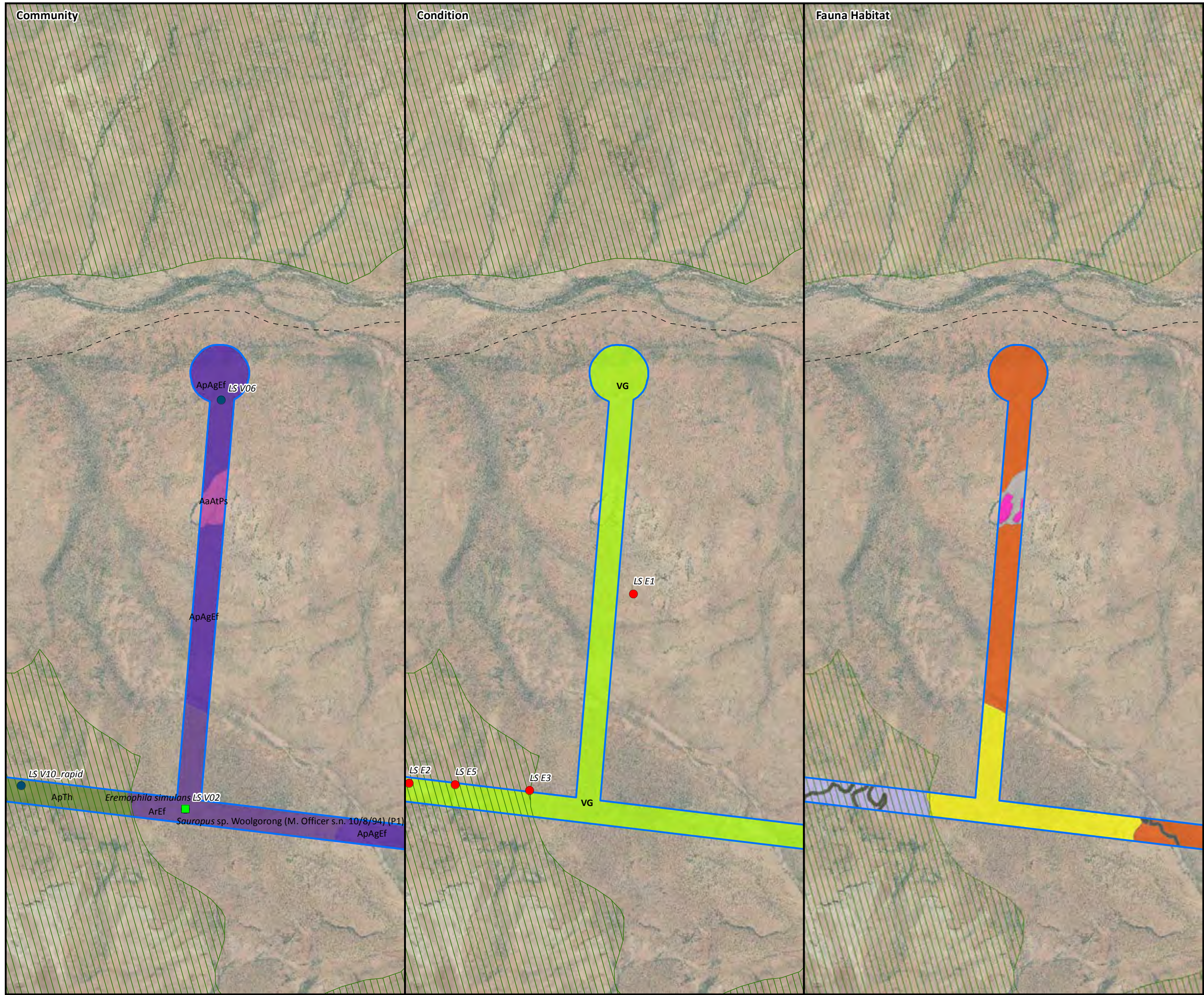


AECOM does not warrant the accuracy or completeness of information displayed in this map and any person using it does so at their own risk. AECOM shall bear no responsibility or liability for any errors, faults, defects, or omissions in the information.

© 2014 AECOM Australia Pty Ltd

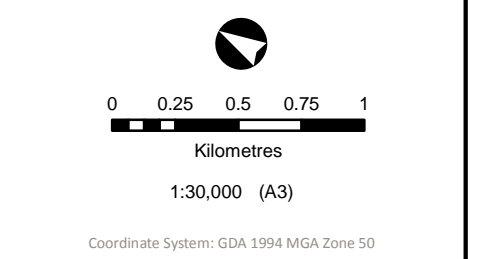
Based on information provided by and with the permission of the Western Australian Land Information Authority trading as Landgate (2010).



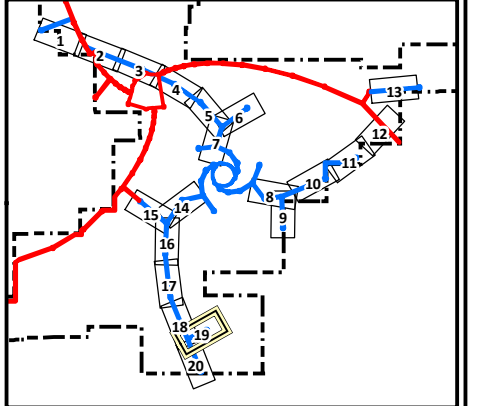


SKA1 - Low Vegetation Communities, Condition and Fauna Habitats

SKA Ecological Survey
Figure 6.19



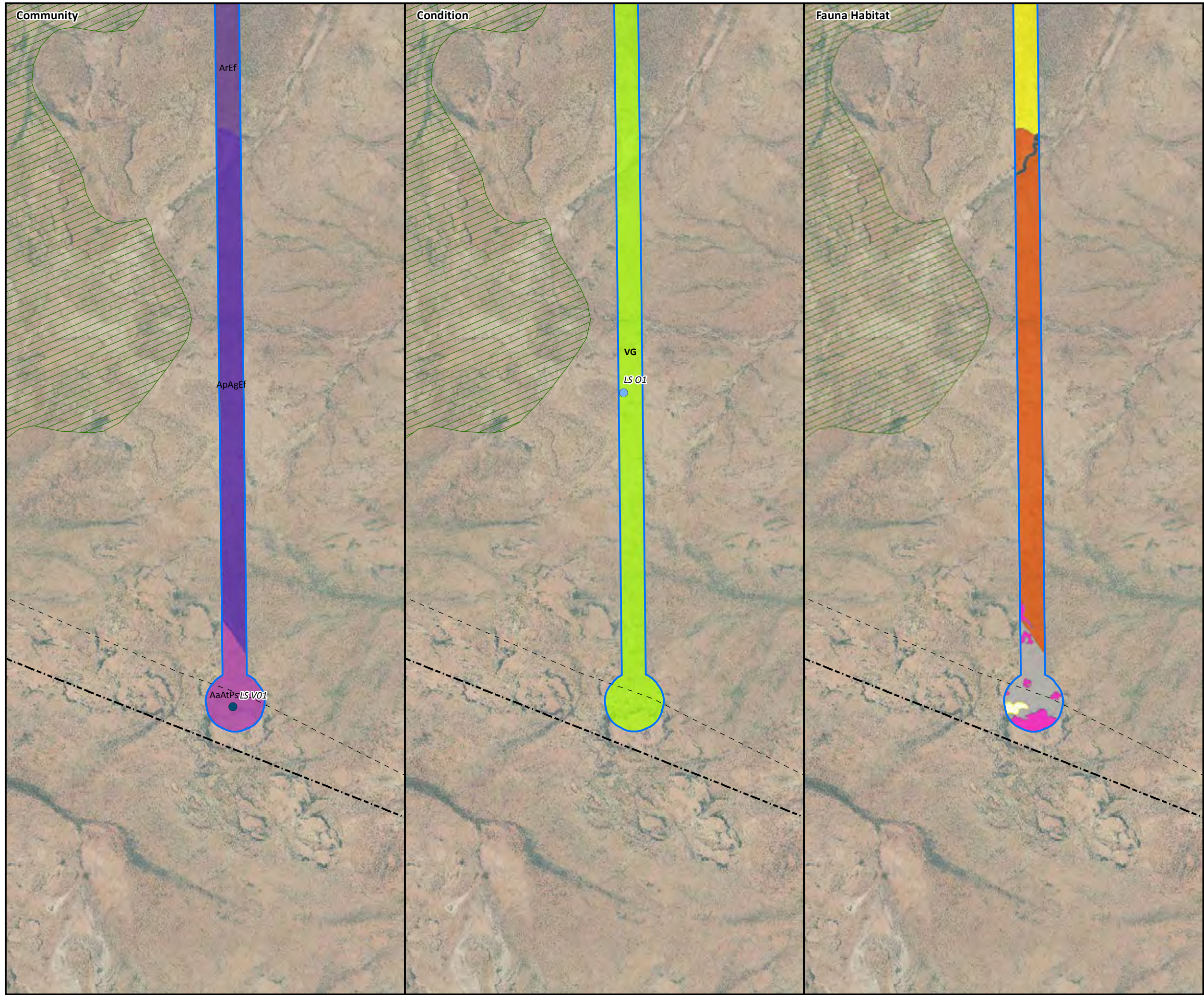
- SKA1 - Low
 - SKA1 - Survey
 - MRO Boundary
 - Boolardy Station
 - Sherwood Land System
 - Previous Survey (Alex Holmes)
- | | | | |
|-------------------------------|---|---|---|
| Vegetation Communities | AfSa | AiTdPd | ArEd |
| | AiAbSa | ApAgEf | ArEf |
| | AaAtPs | AiAtEf | AvEp |
| | AcAsTd | AiEs | ArCc |
| | AFEpo | | EvAsEb |
-
- | | |
|---|--|
| Fauna Habitats | Conservation Significant Flora |
| Channels and creek line | Erosion |
| Granite boulders and heaps | Observation |
| Granite domes | Quadrat |
| Hardpan plain with intermittent sandplain | Trapdoor Spider |
| Non saline stony or gritty surfaced plains | White-browed Babbler |
| Rocky Breakaway and plateau edges | Western Spiny-tailed Skink Observations |
| Saline lower footslopes below breakaways | Western Spiny-tailed Skink Habitat |
| Sandplain | Good to Excellent |
| | Moderate |
| | Poor |



AECOM does not warrant the accuracy or completeness of information displayed in this map and any person using it does so at their own risk. AECOM shall bear no responsibility or liability for any errors, faults, defects, or omissions in the information.

© 2014 AECOM Australia Pty Ltd
Based on information provided by and with the permission of the Western Australian Land Information Authority trading as Landgate (2010).

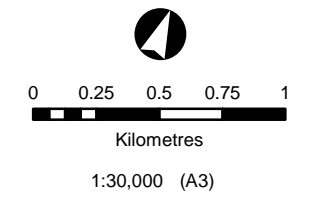




SKA1 - Low Vegetation Communities, Condition and Fauna Habitats

SKA Ecological Survey

Figure 6.20

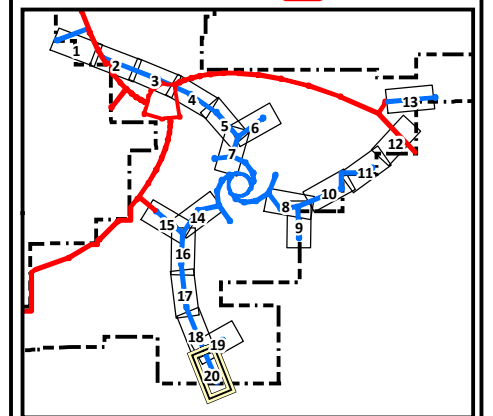


Coordinate System: GDA 1994 MGA Zone 50

- SKA1 - Low
- SKA1 - Survey
- MRO Boundary
- Boolardy Station
- Sherwood Land System
- Previous Survey (Alex Holmes)

- Vegetation Communities**
- AfSa
 - AiTdPd
 - ArEd
 - AiAbSa
 - ApAgEf
 - ArEf
 - AaAtPs
 - AiAtEf
 - ApTh
 - AvEp
 - AcAsTd
 - AiEs
 - ArCc
 - EvAsEb
 - AFEpo

- Fauna Habitats**
- Channels and creek line
 - Granite boulders and heaps
 - Granite domes
 - Hardpan plain with intermittent sandplain
 - Non saline stony or gritty surfaced plains
 - Rocky Breakaway and plateau edges
 - Saline lower footslopes below breakaways
 - Sandplain
 - Conservation Significant Flora
 - Erosion
 - Observation
 - Quadrat
 - Trapdoor Spider
 - White-browed Babbler
 - Western Spiny-tailed Skink Observations
 - Western Spiny-tailed Skink Habitat
 - Good to Excellent
 - Moderate
 - Poor

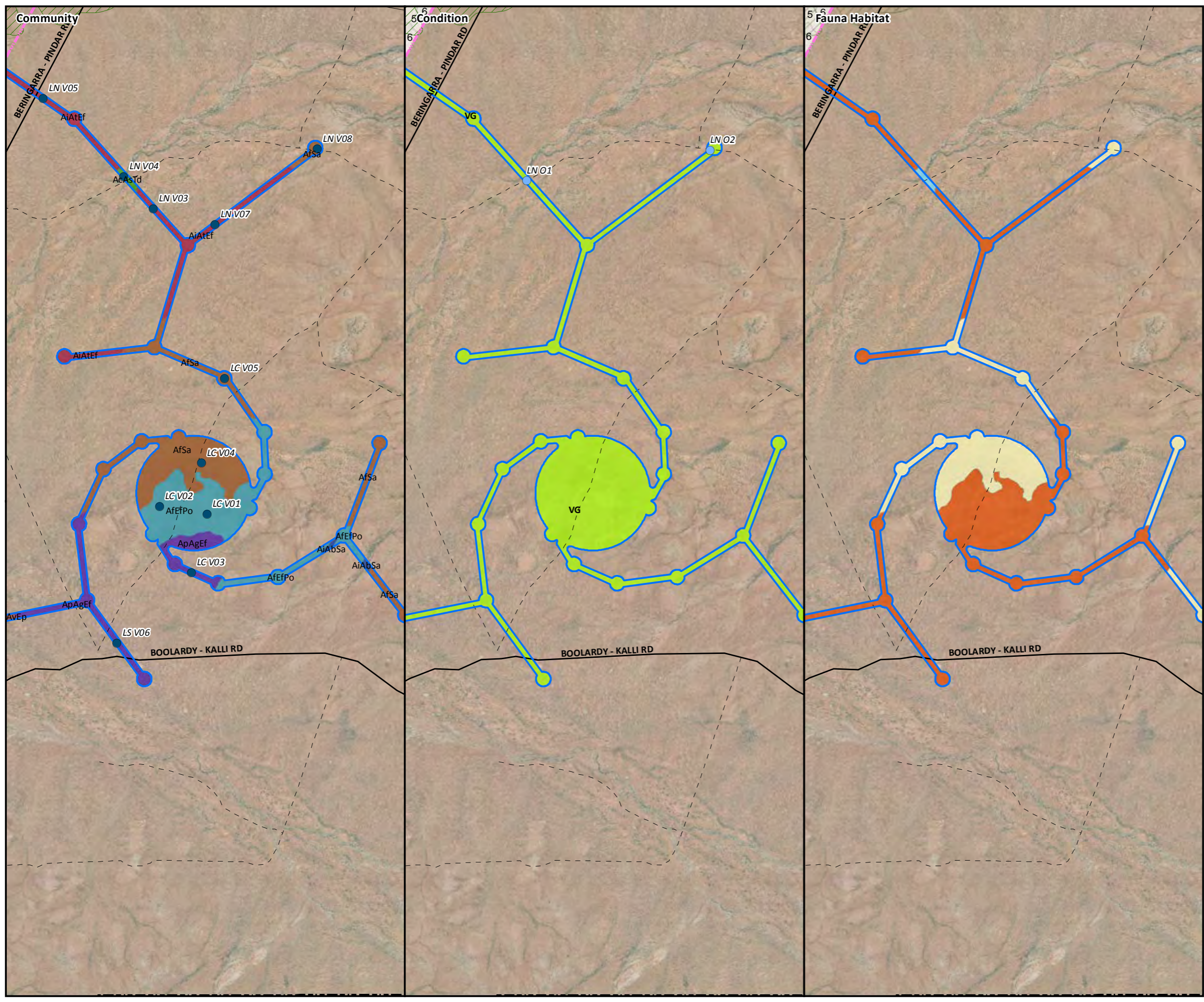


AECOM does not warrant the accuracy or completeness of information displayed in this map and any person using it does so at their own risk. AECOM shall bear no responsibility or liability for any errors, faults, defects, or omissions in the information.

© 2014 AECOM Australia Pty Ltd

Based on information provided by and with the permission of the Western Australian Land Information Authority trading as Landgate (2010).

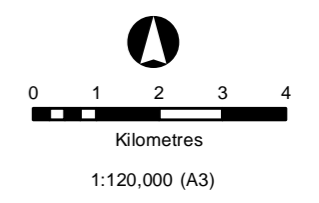




SKA1 - Survey Vegetation Communities, Condition and Fauna Habitats

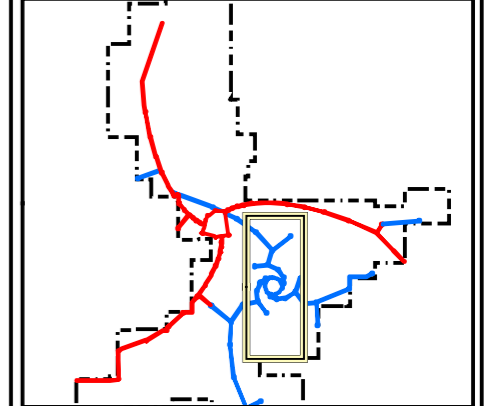
SKA Ecological Survey

Figure 6.21



Coordinate System: GDA 1994 MGA Zone 50

- | | |
|---------------|-------------------------------|
| SKA1 - Low | Boolardy Station |
| SKA1 - Survey | Sherwood Land System |
| MRO Boundary | Previous Survey (Alex Holmes) |
-
- | | | | |
|-------------------------------|--------|--------|--------|
| Vegetation Communities | AfSa | AiTdPd | ArEd |
| AaAtPs | AiAbSa | ApAgEf | ArEf |
| AcAsTd | AiAtEf | ApTh | AvEp |
| AfEfPo | AiEs | ArCc | EvAsEb |
-
- | | |
|--|---|
| Fauna Habitats | Conservation Significant Flora |
| Channels and creek line | Erosion |
| Granite boulders and heaps | Observation |
| Granite domes | Quadrat |
| Hardpan plain with intermittent sandplain | Trapdoor Spider |
| Non saline stony or gritty surfaced plains | White-browed Babbler |
| Rocky Breakaway and plateau edges | Western Spiny-tailed Skink Observations |
| Saline lower footslopes below breakaways | Western Spiny-tailed Skink |
| Sandplain | Western Spiny-tailed Skink Habitat |
| | Good to Excellent |
| | Moderate |
| | Poor |



AECOM does not warrant the accuracy or completeness of information displayed in this map and any person using it does so at their own risk. AECOM shall bear no responsibility or liability for any errors, faults, defects, or omissions in the information.

© 2014 AECOM Australia Pty Ltd

Based on information provided by and with the permission of the Western Australian Land Information Authority trading as Landgate (2010).

