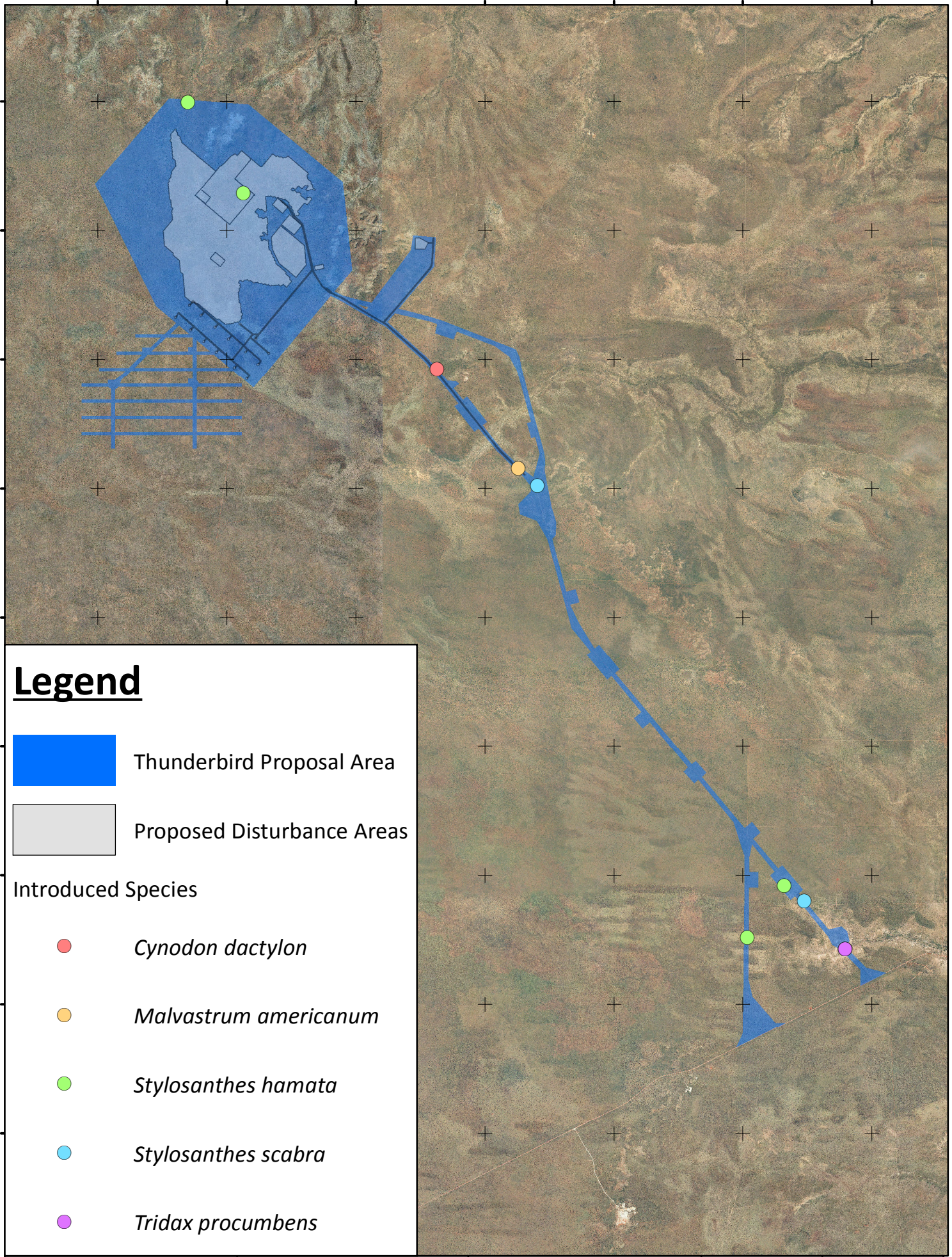


492000 496000 500000 504000 508000 512000 516000

80750000  
80720000  
80680000  
80640000  
80600000  
80560000  
80520000  
80480000  
80440000

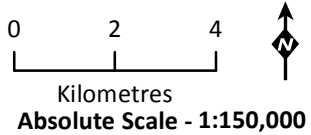


# Legend

- Thunderbird Proposal Area
- Proposed Disturbance Areas

## Introduced Species

- Cynodon dactylon*
- Malvastrum americanum*
- Stylosanthes hamata*
- Stylosanthes scabra*
- Tridax procumbens*



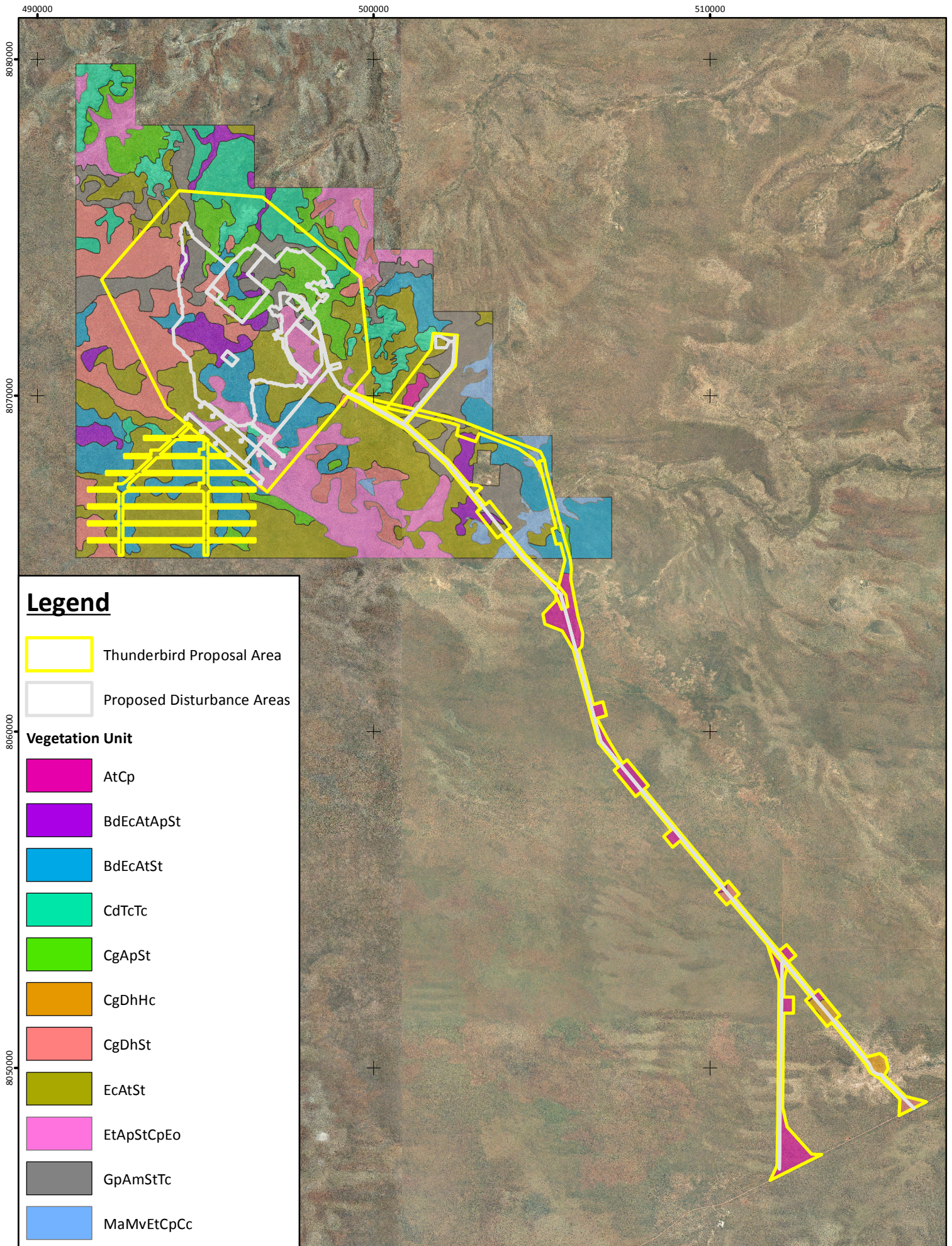
## Introduced Species Recorded in the Proposal Area

Figure: 6.4  
Project ID: 1645

Drawn: BH  
Date: 04.11.15

Coordinate System  
Name: GDA 1994 MGA Zone 50  
Projection: Transverse Mercator  
Datum: GDA 1994



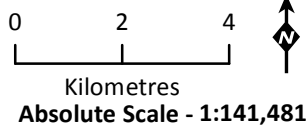


**Legend**

- Thunderbird Proposal Area
- Proposed Disturbance Areas

**Vegetation Unit**

- AtCp
- BdEcAtApSt
- BdEcAtSt
- CdTcTc
- CgApSt
- CgDhHc
- CgDhSt
- EcAtSt
- EtApStCpEo
- GpAmStTc
- MaMvEtCpCc



**Vegetation Communities  
Recorded in the  
Proposal Area**

**Figure: 6.5**  
**Project ID: 1645**

**Drawn: BH**  
**Date: 18.11.15**

*Coordinate System*  
Name: GDA 1994 MGA Zone 50  
Projection: Transverse Mercator  
Datum: GDA 1994



**Table 11: Representation of vegetation communities inside Proposal Area and proposed disturbance areas**

Vegetation code	Total area mapped (ha)	Area within Proposal Area (ha / % of mapped)	Area within Proposed Disturbance Areas (ha / % of mapped)
<i>AtCp</i>	625.1	608.0 (97%)	14.0 (2%)
<i>BdEcAtApSt</i>	541.2	255.5 (47%)	203 (37%)
<i>BdEcAtSt</i>	2,111.2	724.2 (34%)	229 (11%)
<i>CdTcTc</i>	1,307.7	333.5 (25%)	3.5 (<1%)
<i>CgApSt</i>	1155.4	657.6 (57%)	286.3 (25%)
<i>CgDhHc</i>	110.7	107.3 (97%)	3.2 (3%)
<i>CgDhSt</i>	2,041.4	912.5 (45%)	216(11%)
<i>EcAtSt</i>	4,064.4	1452.4 (36%)	319 (8%)
<i>EtApStCpEo</i>	1,759.5	460.2 (26%)	191(11%)
<i>GpAmStTc</i>	1,633.5	677.8 (41%)	255.2 (16%)
<i>MaMvEtCpCc</i>	352.6	35.8 (10%)	0.5 (<1%)
<b>Total</b>	<b>15,702.6</b>	<b>6,224.7 (40%)</b>	<b>1,723 (11%)</b>

**Table 12: Vegetation units of the Thunderbird area**

Vegetation unit mapping code	Quadrats	Vegetation description	Associated species	Area Mapped (ha)
AtCp	1 3 4 5 7 16 17 18	Landform: Sandy plain  <i>Acacia tumida</i> var. <i>tumida</i> tall shrubland, over <i>Sorghum timorense</i> , <i>Chrysopogon pallidus</i> and <i>Heteropogon contortus</i> tussock grassland.  Average species richness = 22.1 ± 5.6 Sample size = 8	<i>Brachychiton diversifolius</i> subsp. <i>diversifolius</i> <i>Corymbia greeniana</i> <i>Dolichandrone heterophylla</i> <i>Eriachne obtusa</i> <i>Erythrophleum chlorostachys</i> <i>Galactia tenuiflora</i> <i>Grevillea refracta</i> subsp. <i>refracta</i> <i>Microstachys chamaelea</i> <i>Terminalia canescens</i>	625.1





Vegetation unit mapping code	Quadrats	Vegetation description	Associated species	Area Mapped (ha)
BdEcAtApSt	P1-Q03 P1-Q12 P1-Q13 P2-Q18C P2-Q48	<p>Landform: Sandy plain</p> <p><i>Brachychiton diversifolius</i> subsp. <i>diversifolius</i> and <i>Erythrophleum chlorostachys</i> low, open woodland, over <i>Acacia tumida</i> var. <i>tumida</i> and <i>Acacia platycarpa</i> tall, sparse shrubland, over <i>Sorghum timorense</i> sparse, tussock grassland</p> <p>Average species richness = 32.2 ± 3.8 Sample size = 5</p>	<p><i>Acacia platycarpa</i> <i>Acacia tumida</i> var. <i>tumida</i> <i>Brachychiton diversifolius</i> subsp. <i>diversifolius</i> <i>Chrysopogon pallidus</i> <i>Corchorus sidoides</i> subsp. <i>vermicularis</i> <i>Corymbia greeniana</i> <i>Dodonaea hispidula</i> var. <i>arida</i> <i>Erythrophleum chlorostachys</i> <i>Microstachys chamaelea</i> <i>Sorghum timorense</i></p>	541.2





Vegetation unit mapping code	Quadrats	Vegetation description	Associated species	Area Mapped (ha)
BdEcAtSt	1501_21 1501_23A 1501_33 1501_36C 1501_37 1501_45 1501_46 1501_51 1501_52 1501_61	Landform: Sandy plain  <i>Brachychiton diversifolius</i> subsp. <i>diversifolius</i> and <i>Erythrophleum chlorostachys</i> low, open woodland, over <i>Acacia tumida</i> var. <i>tumida</i> mid, sparse shrubland, over <i>Sorghum timorense</i> sparse, tussock grassland  Average species richness = 22.2 ± 1.3 Sample size = 10	<i>Acacia platycarpa</i> <i>Acacia tumida</i> var. <i>tumida</i> <i>Bauhinia cunninghamii</i> <i>Brachychiton diversifolius</i> subsp. <i>diversifolius</i> <i>Corymbia greeniana</i> <i>Dolichandrone heterophylla</i> <i>Eragrostis eriopoda</i> <i>Erythrophleum chlorostachys</i> <i>Sorghum timorense</i> <i>Spermacoce occidentalis</i>	2,111.2





Vegetation unit mapping code	Quadrats	Vegetation description	Associated species	Area Mapped (ha)
CdTcTc	P1-Q09 P1-Q10 P1-Q15 P1-Q18 P1-Q20B P2-Q09 P2-Q22N P2-Q24 P2-Q32 P2-Q69 P2-Q76 P2-Q81 P2-Q82	Landform: Hillslope - midslope or ridgetop  <i>Corymbia dendromerinx</i> and <i>Terminalia canescens</i> low, open woodland, over <i>Triodia caelestialis</i> (P3) open hummock grassland  Average species richness = 24.9 ± 1.7 Sample size = 12	<i>Corymbia dendromerinx</i> <i>Eriachne obtusa</i> <i>Gomphrena canescens</i> subsp. <i>canescens</i> <i>Grevillea pyramidalis</i> subsp. <i>pyramidalis</i> <i>Indigofera linifolia</i> <i>Sorghum timorense</i> <i>Stemodia lythrifolia</i> <i>Terminalia canescens</i> <i>Triodia caelestialis</i> <i>Wrightia saligna</i>	1,307.7





Vegetation unit mapping code	Quadrats	Vegetation description	Associated species	Area Mapped (ha)
CgApSt	P2-Q13 P2-Q19S P2-Q36S P2-Q56 P2-Q80 P2-Q82A	Landform: Sandy plain  <i>Corymbia greeniana</i> mid, open woodland, over <i>Acacia platycarpa</i> tall, sparse shrubland, over <i>Sorghum timorense</i> open tussock grassland  Average species richness = 18.3 ± 2.2 Sample size = 6	<i>Acacia platycarpa</i> <i>Aristida hygrometrica</i> <i>Chrysopogon pallidus</i> <i>Corymbia dendromerinx</i> <i>Corymbia greeniana</i> <i>Erythrophleum chlorostachys</i> <i>Grevillea refracta</i> subsp. <i>refracta</i> <i>Microstachys chamaelea</i> <i>Solanum cunninghamii</i> <i>Sorghum timorense</i>	1,155.4





Vegetation unit mapping code	Quadrats	Vegetation description	Associated species	Area Mapped (ha)
CgDhHc	8 9 11 13	<p>Landform: Floodplains adjacent to ephemeral waterways</p> <p><i>Corymbia greeniana</i> low open forest over <i>Dolichandrone heterophylla</i> sparse shrubland, over <i>Heteropogon contortus</i> sparse tussock grassland.</p> <p>Average species richness = 23.8 ± 2.8 Sample size = 4</p>	<p><i>Acacia coleii</i> <i>Acacia drepanocarpa</i> <i>Acacia tumida</i> var. <i>tumida</i> <i>Aristida inaequiglumis</i> <i>Bauhinia cunninghamii</i> <i>Brachychiton diversifolius</i> subsp. <i>diversifolius</i> <i>Chrysopogon pallidus</i> <i>Eriachne obtusa</i> <i>Gomphrena canescens</i> <i>Indigofera linifolia</i> <i>Stylosanthes hamata</i> <i>Triodia schinzii</i></p>	110.7





Vegetation unit mapping code	Quadrats	Vegetation description	Associated species	Area Mapped (ha)
CgDhSt	P1-Q11 P1-Q17 P1-Q20A P2-Q12 P2-Q16 P2-Q22 P2-Q29 P2-Q31 P2-Q40 P2-Q62	Landform: Sandy plain  <i>Corymbia greeniana</i> low, open woodland, over <i>Dolichandrone heterophylla</i> mid, sparse shrubland, over <i>Sorghum timorense</i> tussock grassland  Average species richness = 19.1 ± 1.5 Sample size = 10	<i>Acacia tumida</i> var. <i>tumida</i> <i>Bauhinia cunninghamii</i> <i>Brachychiton diversifolius</i> subsp. <i>diversifolius</i> <i>Corymbia greeniana</i> <i>Corymbia zygomphylla</i> <i>Dolichandrone heterophylla</i> <i>Eriachne obtusa</i> <i>Erythrophleum chlorostachys</i> <i>Sorghum timorense</i> <i>Triodia caelestialis</i>	2041.4





Vegetation unit mapping code	Quadrats	Vegetation description	Associated species	Area Mapped (ha)
EcAtSt	P1-Q06 P2-Q14 P2-Q15 P2-Q26 P2-Q41C P2-Q49 P2-Q58 P2-Q66 P2-Q70	Landform: Sandy plain  <i>Erythrophleum chlorostachys</i> low, open woodland, over <i>Acacia tumida</i> var. <i>tumida</i> mid, sparse shrubland, over <i>Sorghum timorense</i> open tussock grassland  Average species richness = 24.1 ± 2.4 Sample size = 10	<i>Acacia tumida</i> var. <i>tumida</i> <i>Aristida hygrometrica</i> <i>Dodonaea hispidula</i> var. <i>arida</i> <i>Erythrophleum chlorostachys</i> <i>Grevillea refracta</i> subsp. <i>refracta</i> <i>Microstachys chamaelea</i> <i>Sorghum timorense</i> <i>Spermacoce occidentalis</i> <i>Terminalia canescens</i> <i>Wrightia saligna</i>	4064.4

