

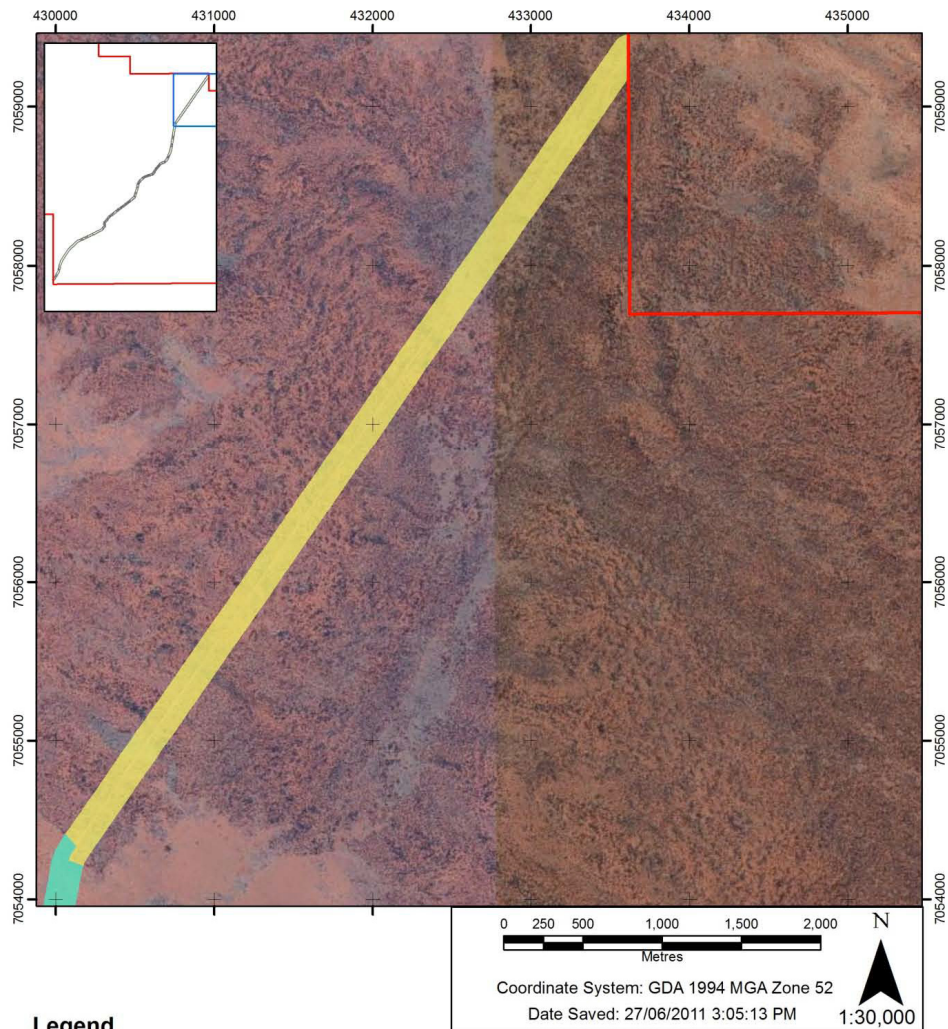
Wingellina Nickel Project Section 38 Referral Appendix 2	Document No:	Rev	Date:	Page
	140211-0000-30RA-0003	1	24/09/2013	1 of 6

Appendix 2

Vegetation Map – Central Officer Borefield

Wingellina Nickel Project	Document No:	Rev	Date:	Page
Section 38 Referral Appendix 2	140211-0000-30RA-0003	1	24/09/2013	2 of 6

Wingellina Nickel Project Section 38 Referral Appendix 2	Document No:	Rev	Date:	Page
	140211-0000-30RA-0003	1	24/09/2013	3 of 6



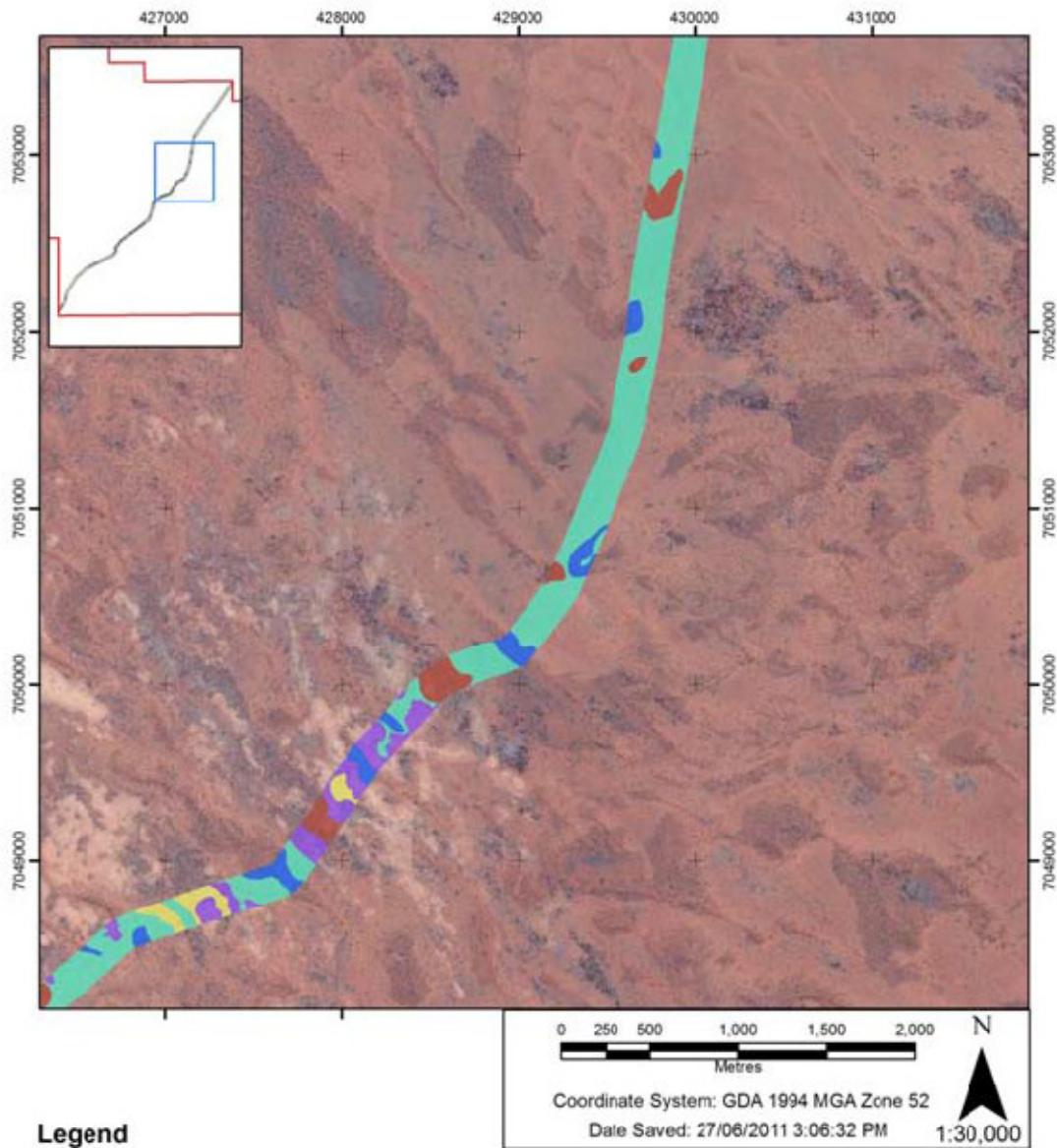
Legend

- Vegetation Community 1: Marblegum (*Eucalyptus gongylocarpa*) Low Open Woodland on Broad Sandy Ridges
- Vegetation Community 2: Sharp-capped Mallee (*Eucalyptus oxymitra*) and/or Ooldea Mallee (*E. youngiana*) Very Open Shrub Mallee on High Dunes
- Vegetation Community 3: Jingulu (*Eucalyptus glomerosa*) and/or Blue Mallee (*E. gamophylla*) and/or Ooldea Mallee (*E. youngiana*) Very Open Shrub Mallee, grading into *Triodia basedowii* Grasslands, on Flat Sandy Plains
- Vegetation Community 4a: Mulga (*Acacia aneura*) Tall (Open) Shrubland with a Tussock Grass Understorey of *Triodia basedowii* on Undulating Sandy Loam Plains
- Vegetation Community 4a/4b: As above, plus Mulga (*Acacia aneura*) Tall Shrubland with Hummock Grass Understorey of *Eragrostis eriopoda* and *Aristida holothera* on Loam Plains
- Vegetation Community 5: Inland Red Mallee (*Eucalyptis socialis* subsp. *eucentrica*) Very Open Shrub Mallee with Tussock Grass Understorey of *Triodia scariosa* on Undulating Calcrete Plains

Path: U:\Clients\Wingellina\3. Projects\WingellinaBorefield_VS_VegMapping4of4.mxd

Figure A1: Vegetation Map of the General Officer Borefield Area (Map 1 of 4)

Wingellina Nickel Project Section 38 Referral Appendix 2	Document No:	Rev	Date:	Page
	140211-0000-30RA-0003	1	24/09/2013	4 of 6



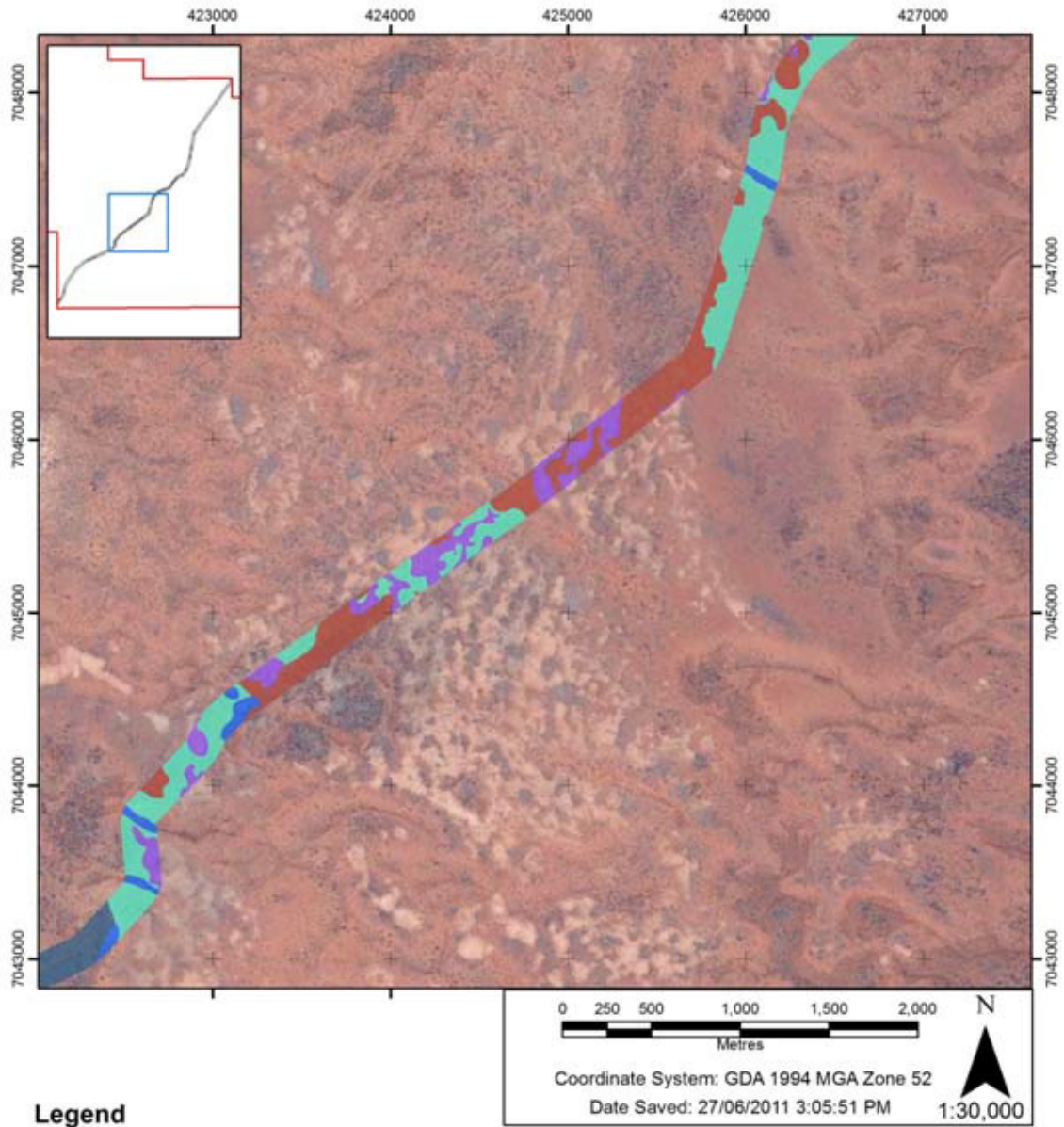
Legend

- Vegetation Community 1: Martlegum (*Eucalyptus gongylocarpa*) Low Open Woodland on Broad Sandy Ridges
- Vegetation Community 2: Sharp-capped Mallee (*Eucalyptus oxymitra*) and/or Ooldea Mallee (*E. youngiana*) Very Open Shrub Mallee on High Dunes
- Vegetation Community 3: Jingulu (*Eucalyptus glomerosa*) and/or Blue Mallee (*E. gamophylla*) and/or Ooldea Mallee (*E. youngiana*) Very Open Shrub Mallee, grading into *Triodia basedowii* Grasslands, on Flat Sandy Plains
- Vegetation Community 4a: Mulga (*Acacia aneura*) Tall (Open) Shrubland with a Tussock Grass Understorey of *Triodia basedowii* on Undulating Sandy Loam Plains
- Vegetation Community 4a/4b: As above, plus Mulga (*Acacia aneura*) Tall Shrubland with Hummock Grass Understorey of *Eragrostis eriopoda* and *Aristida holothera* on Loam Plains
- Vegetation Community 5: Inland Red Mallee (*Eucalyptis socialis* subsp. *eucentrica*) Very Open Shrub Mallee with Tussock Grass Understorey of *Triodia scariosa* on Undulating Calcrete Plains

Path: U:\Clients\Wingellina\3. Projects\WingellinaBorefield_VS_VegMapping3of4.mxd

Figure A2: Vegetation Map of the General Officer Borefield Area (Map 2 of 4)

Wingellina Nickel Project Section 38 Referral Appendix 2	Document No:	Rev	Date:	Page
	140211-0000-30RA-0003	1	24/09/2013	5 of 6



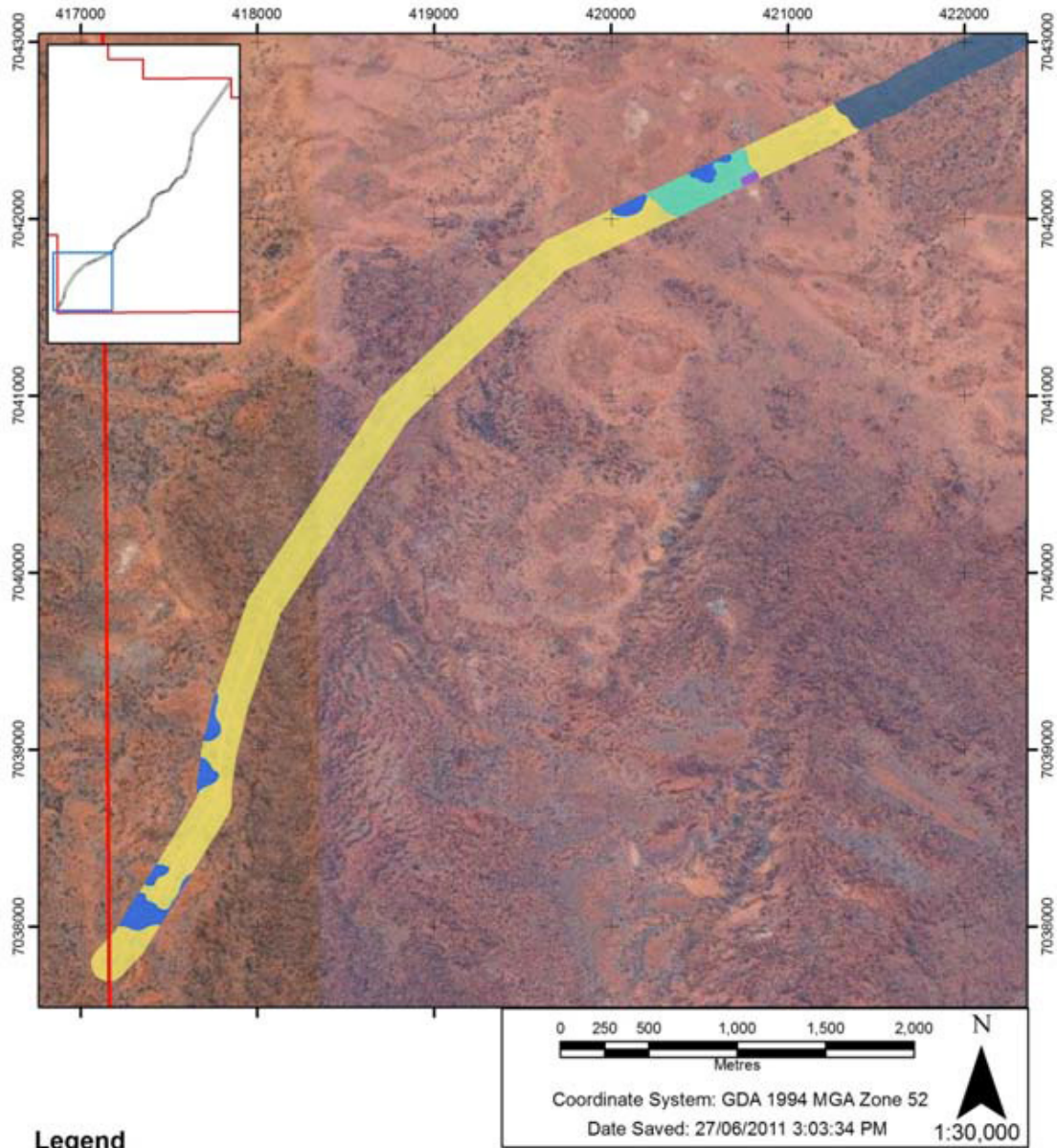
Legend

- Vegetation Community 1: Marbled gum (*Eucalyptus gongylocarpa*) Low Open Woodland on Broad Sandy Ridges
- Vegetation Community 2: Sharp-capped Mallee (*Eucalyptus oxymitra*) and/or Ooldea Mallee (*E. youngiana*) Very Open Shrub Mallee on High Dunes
- Vegetation Community 3: Jingulu (*Eucalyptus glomerosa*) and/or Blue Mallee (*E. gamophylla*) and/or Ooldea Mallee (*E. youngiana*) Very Open Shrub Mallee, grading into *Triodia basedowii* Grasslands, on Flat Sandy Plains
- Vegetation Community 4a: Mulga (*Acacia aneura*) Tall (Open) Shrubland with a Tussock Grass Understorey of *Triodia basedowii* on Undulating Sandy Loam Plains
- Vegetation Community 4a/4b: As above, plus Mulga (*Acacia aneura*) Tall Shrubland with Hummock Grass Understorey of *Eragrostis eriopoda* and *Aristida holothera* on Loam Plains
- Vegetation Community 5: Inland Red Mallee (*Eucalyptis socialis* subsp. *eucentrica*) Very Open Shrub Mallee with Tussock Grass Understorey of *Triodia scariosa* on Undulating Calcrete Plains

Path: U:\Clients\Wingellina\3. Projects\WingellinaBorefield_VS_VegMapping2of4.mxd

Figure A3: Vegetation Map of the General Officer Borefield Area (Map 3 of 4)

Wingellina Nickel Project Section 38 Referral Appendix 2	Document No:	Rev	Date:	Page
	140211-0000-30RA-0003	1	24/09/2013	6 of 6



Legend

- Vegetation Community 1: Marblegum (*Eucalyptus gongylocarpa*) Low Open Woodland on Broad Sandy Ridges
- Vegetation Community 2: Sharp-capped Mallee (*Eucalyptus oxymitra*) and/or Ooldea Mallee (*E. youngiana*) Very Open Shrub Mallee on High Dunes
- Vegetation Community 3: Jingulu (*Eucalyptus glomerosa*) and/or Blue Mallee (*E. gamophylla*) and/or Ooldea Mallee (*E. youngiana*) Very Open Shrub Mallee, grading into *Triodia basedowii* Grasslands, on Flat Sandy Plains
- Vegetation Community 4a: Mulga (*Acacia aneura*) Tall (Open) Shrubland with a Tussock Grass Understorey of *Triodia basedowii* on Undulating Sandy Loam Plains
- Vegetation Community 4a/4b: As above, plus Mulga (*Acacia aneura*) Tall Shrubland with Hummock Grass Understorey of *Eragrostis eriopoda* and *Aristida holothera* on Loam Plains
- Vegetation Community 5: Inland Red Mallee (*Eucalyptus socialis* subsp. *eucentrica*) Very Open Shrub Mallee with Tussock Grass Understorey of *Triodia scariosa* on Undulating Calcrete Plains

Figure A4: Vegetation Map of the General Officer Borefield Area (Map 4 of 4)